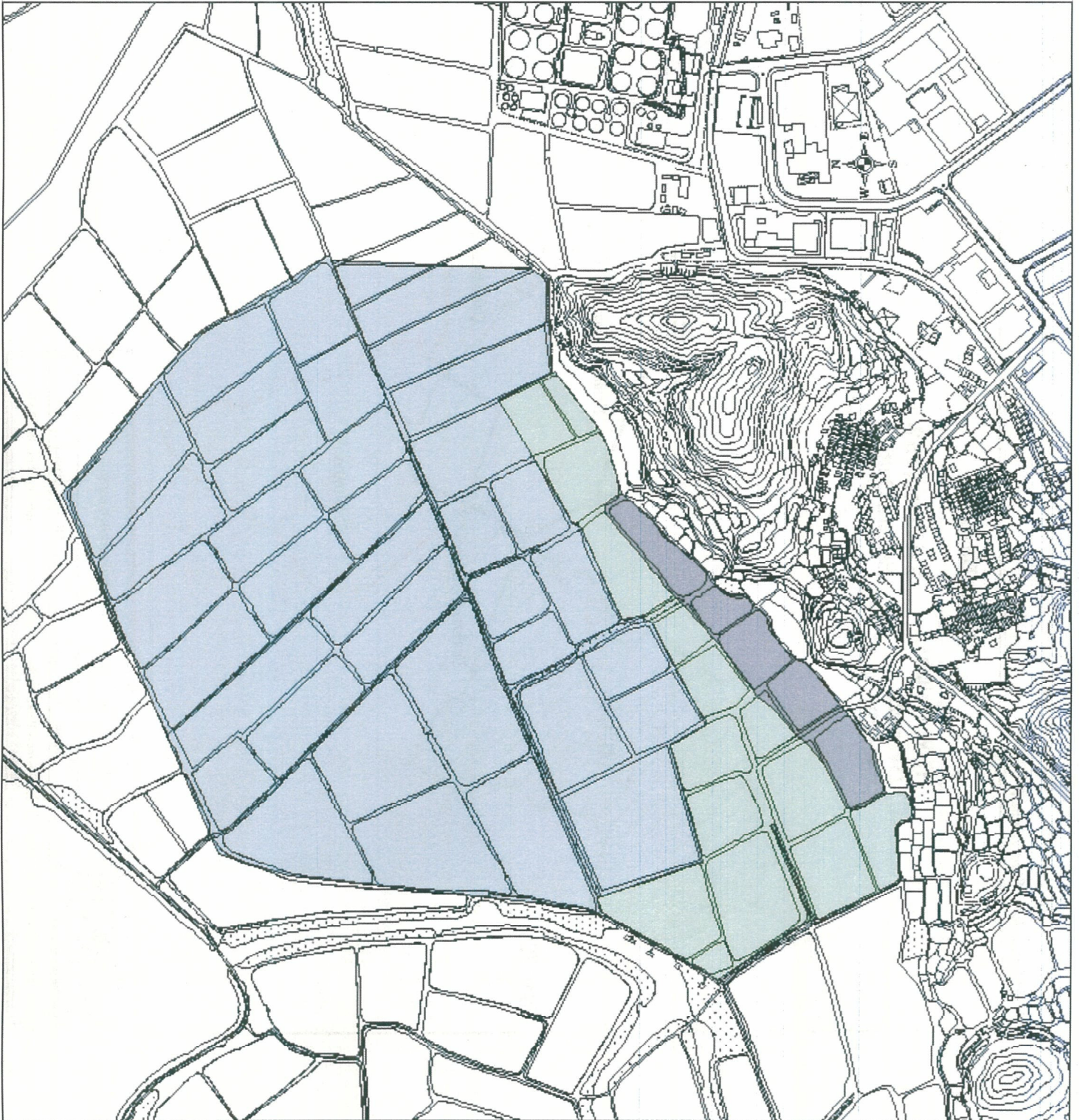


LEGEND

-  Development Area
-  Created Marsh Habitat
-  Enhanced Fish Ponds



RPS

Figure 14.4. Broad layout of the Wetland Nature Reserve.

Drawn by: PD
Scale (A4): NTS
Version: 2

Project no: P244

Date: Dec 2005

Willow Mere House, Compass Point Business Park,
Stocks Bridge Way, St. Ives, Cambridgeshire,
PE27 5JL. Tel: 01480 466335 Fax: 01480 466911