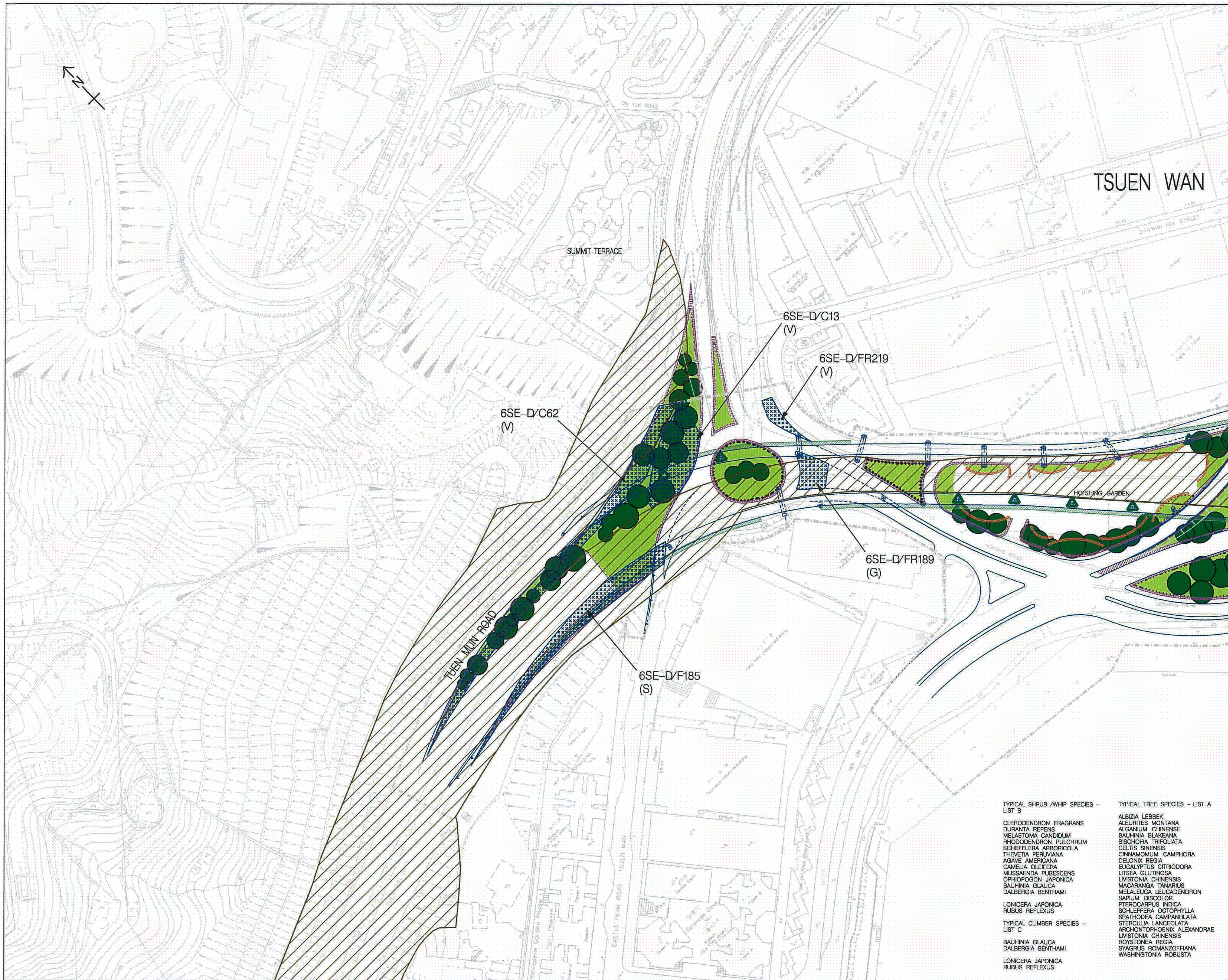


ANNEX 4:

Conceptual Planting Plan

<u>Drawing No.</u>	<u>Description</u>
01345/1701	Conceptual Planting Plan (Sheet 1 of 5)
01345/1702	Conceptual Planting Plan (Sheet 2 of 5)
01345/1703	Conceptual Planting Plan (Sheet 3 of 5)
01345/1704	Conceptual Planting Plan (Sheet 4 of 5)
01345/1705	Conceptual Planting Plan (Sheet 5 of 5)



- NOTES:
- AREAS DISTURBED THROUGH CONSTRUCTION ACTIVITIES WITHIN TSUEN WAN PARK TO BE MADE GOOD TO CEDD SPECIFICATION.
 - EXISTING VEGETATION ON TRAFFIC ISLAND TO BE MADE GOOD POST CONSTRUCTION.
 - CHUNAM SLOPES TO BE REGRADED, HYDROSEEDED AND REPLANTED.
 - CLIMBER SHALL BE PLANTED ON THE TOP OF RETAINING WALL AS SPECIFIED DETAILS SHALL REFER TO FIGURE 8.18.

- GRANITE BLOCKS ANGLED FACE RAISED PLANTER TO HIGHWAYS DEPARTMENT STANDARD DESIGN NOMINAL 500MM HIGH (HYD STANDARD DRAWING NO. H5103A AND H6104A REFER.)
- MATCHING GRANITE BLOCK SCREEN WALL 2M HIGH WITH RAILING LINK PANELS
- ORNAMENTAL SHRUB PLANTING WITH AUTOMATIC DRIP IRRIGATION SYSTEM
- INDIVIDUAL TREES (FOR POSSIBLE COMPENSATORY)
- REPLACEMENT TREE BELT
- TRAILING AND CLIMBING PLANTS, PLANTED ABOVE AND BELOW RETAINING WALL
- LOCATION OF PLANTER AROUND COLUMN AT GROUND LEVEL
- PLANTER ON BRIDGE DECK
- SITE BOUNDARY
- WORK AREA WITHIN TSUEN WAN PARK
- PROPOSED BRIDGE PIERS
- PROPOSED ELEVATED STRUCTURE /AT-GRADE ROAD IMPROVEMENT
- SILT SLOPE REGISTERED FOR HYD MAINTENANCE
- SILT SLOPE REGISTERED FOR JOINT PARTY MAINTENANCE (INCLUDING HYD)
- EXPRESSWAY BOUNDARY OF TSUEN WAN ROAD - TUEN MUN ROAD

6SE-D/C13 SLOPE NO.

SLOPE SURFACE TREATMENT
 (V) VEGETATION
 (R) ROCK
 (G) GRANITE SLOPE
 (S) SHOTCRETE

Rev.	Date	Description	Drawn	Checked

CEDD CIVIL ENGINEERING AND DEVELOPMENT DEPARTMENT
 New Territories North and West Development Office

Consultancy Agreement No. 69/2001(HY)
 Tsuen Wan Bypass, Widening of Tsuen Wan Road between Tsuen Tsing Interchange and Kwai Tsing Interchange and Associated Junction Improvement Works

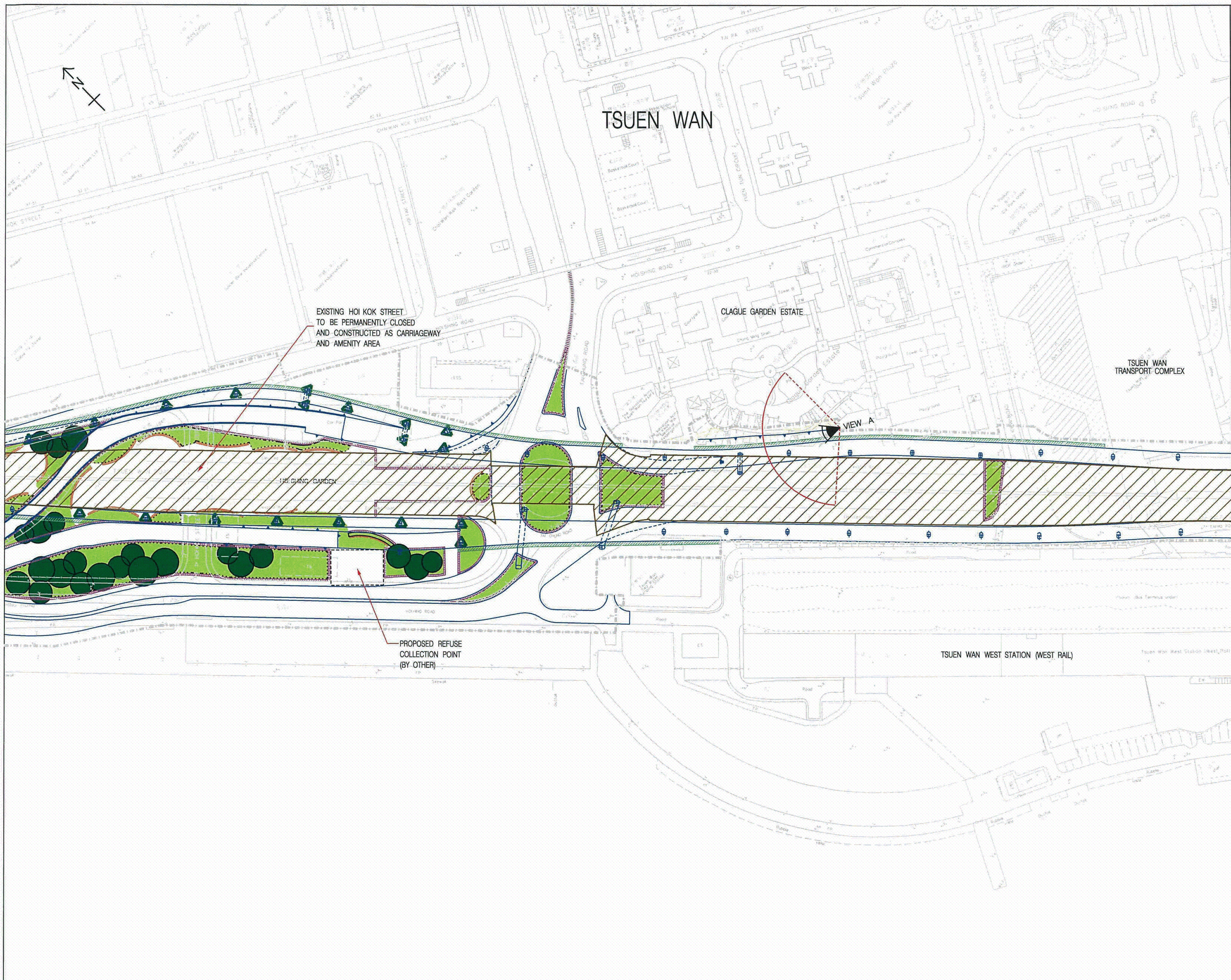
CONCEPTUAL PLANTING PLAN

SHEET 1 OF 5

Drawing No. 圖號	01345/1701		
Designed 設計 ACWC	Drawn 繪圖 HAX	Checked 校核 JT	Scale 比例 1:1000(A1)
Approved 批准 JT	Date 日期 09/08	Status 狀態 PRELIMINARY	

Scott Wilson Ltd
 偉信顧問集團有限公司

- TYPICAL SHRUB /WHIP SPECIES - LIST B
- CLERODENDRON FRAGRANS
 - DURANTA REPENS
 - MELASTOMA CANDIDUM
 - RHODODENDRON PULCHRUM
 - SCHEFFLERA ARBORICOLA
 - THEVETIA PERUVIANA
 - AGAVE AMERICANA
 - CAMELIA OLEIFERA
 - MUSSAENDA PUBESCENS
 - OPHIPOGON JAPONICA
 - BAUHINIA GLAUCA
 - DALBERGIA BENTHAMII
 - LONGICERA JAPONICA
 - RUBUS REFLEXUS
- TYPICAL CLIMBER SPECIES - LIST C
- BAUHINIA GLAUCA
 - DALBERGIA BENTHAMII
 - LONGICERA JAPONICA
 - RUBUS REFLEXUS
- TYPICAL TREE SPECIES - LIST A
- ALBIZIA LEBBEK
 - ALEURITES MONTANA
 - ALGANILUM CHINENSE
 - BAUHINIA BLAKEANA
 - BISCHOFIA TRIFOLIATA
 - CELTIS SINENSIS
 - CINNAMOMUM CAMPHORA
 - DELONIX REGIA
 - EUCALYPTUS CITRIODORA
 - LITSEA GLUTINOSA
 - LIVISTONIA CHINENSIS
 - MACARANGA TANARIUS
 - MELALEUCA LEUCADENDRON
 - SAPIUM DISCOLOR
 - PTEROCARPUS INDICA
 - SCHLEFFERA OCTOPHYLLA
 - SPATHODEA CAMPANULATA
 - STERCULIA LANCEOLATA
 - ARCHONTOPHENIX ALEXANDRAE
 - LIVISTONIA CHINENSIS
 - ROYSTONIA REGIA
 - SYAGRUS ROMANZOFFIANA
 - WASHINGTONIA ROBUSTA



NOTES:
1. GENERAL NOTES REFER TO FIGURE 8.5.

EXISTING HOI KOK STREET
TO BE PERMANENTLY CLOSED
AND CONSTRUCTED AS CARRIAGEWAY
AND AMENITY AREA

HUI SHING GARDEN

PROPOSED REFUSE
COLLECTION POINT
(BY OTHER)

VIEW A

TSUEN WAN

CLAGUE GARDEN ESTATE

TSUEN WAN
TRANSPORT COMPLEX

TSUEN WAN WEST STATION (WEST RAIL)

Rev.	Date	Description	Drawn	Checked

CEDD CIVIL ENGINEERING AND
DEVELOPMENT DEPARTMENT
New Territories North and West Development Office

Consultancy Agreement No. CE 69/2001 (HY)
Tsuen Wan Bypass, Widening of Tsuen Wan Road
between Tsuen Tsing Interchange and Kwai Tsing
Interchange and Associated Junction Improvement
Works

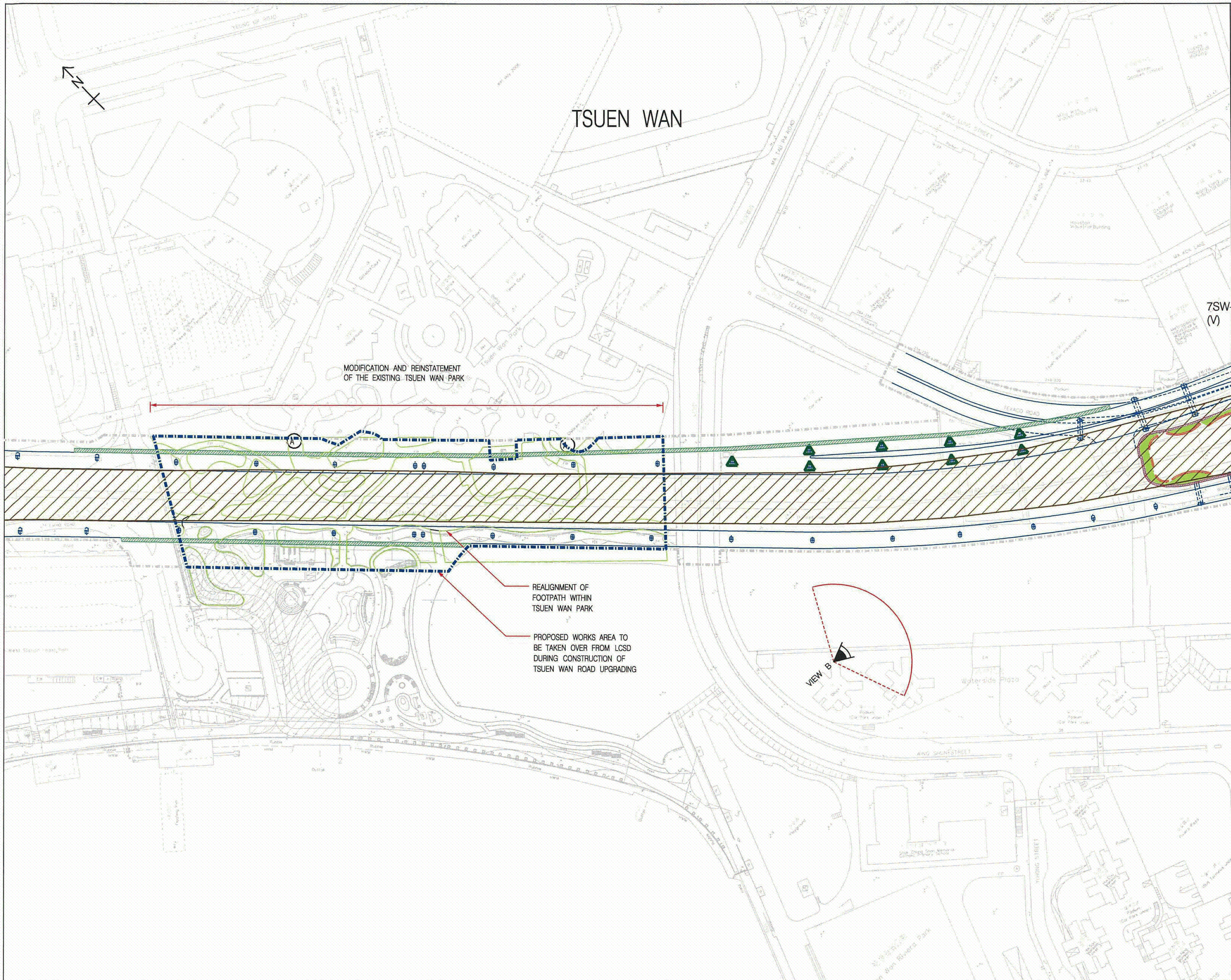
CONCEPTUAL PLANTING PLAN

SHEET 2 OF 5

Drawing No. 圖則編號	01345/1702			
Designed 設計 ACWC	Drawn 繪圖 HAX	Checked 核對 JT	Scale 比例 1:1000(A1)	
Approved 批准 JT	Date 日期 09/08	Status 階段 PRELIMINARY		

Scott Wilson Ltd
偉信顧問集團有限公司





TSUEN WAN

MODIFICATION AND REINSTATEMENT OF THE EXISTING TSUEN WAN PARK

REALIGNMENT OF FOOTPATH WITHIN TSUEN WAN PARK

PROPOSED WORKS AREA TO BE TAKEN OVER FROM LCSD DURING CONSTRUCTION OF TSUEN WAN ROAD UPGRADING

VIEW B

7SW (V)

NOTES:
1. GENERAL NOTES REFER TO FIGURE 8.5.

Rev.	Date	Description	Drawn	Checked

CEDD CIVIL ENGINEERING AND DEVELOPMENT DEPARTMENT
New Territories North and West Development Office


Consultancy Agreement No. CE69/2001 (HY)
Tsuen Wan Bypass, Widening of Tsuen Wan Road between Tsuen Tsing Interchange and Kwai Tsing Interchange and Associated Junction Improvement Works

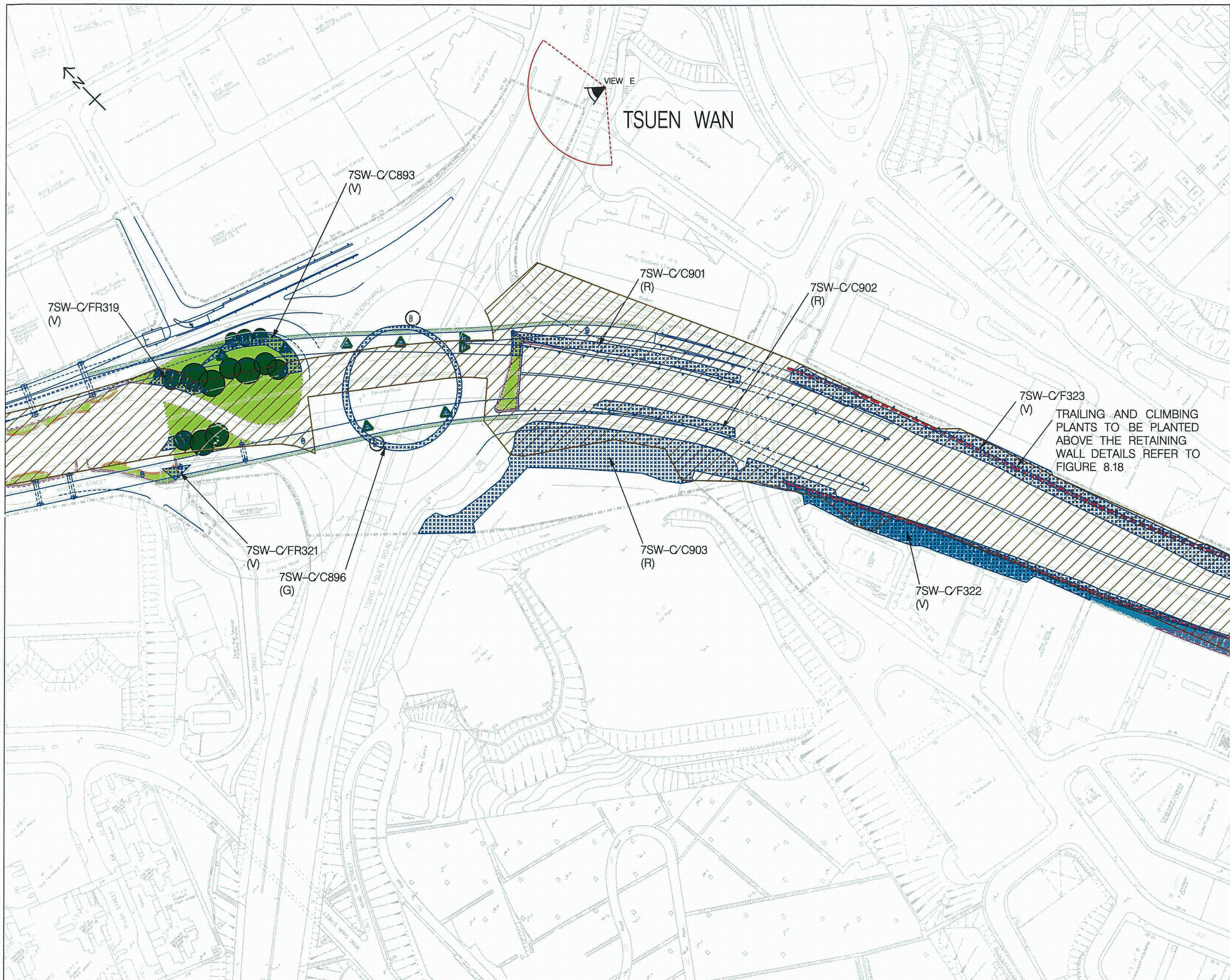
CONCEPTUAL PLANTING PLAN

SHEET 3 OF 5

Drawing No. 圖號	01345/1703			
Designed 設計	Drawn 繪圖	Checked 校核	Scale 比例	Status 圖況
ACWC	HAX	JT	1:1000(A1)	PRELIMINARY
Approved 批准	Date 日期	Status 圖況		
JT	09/08	PRELIMINARY		

Scott Wilson Ltd
偉信顧問集團有限公司





NOTES:
1. GENERAL NOTES REFER TO FIGURE 8.5.

7SW-C/F323 (V)
TRAILING AND CLIMBING PLANTS TO BE PLANTED ABOVE THE RETAINING WALL DETAILS REFER TO FIGURE 8.18

Rev.	Date	Description	Drawn	Checked

CEDD CIVIL ENGINEERING AND DEVELOPMENT DEPARTMENT
New Territories North and West Development Office


Consultancy Agreement No. CE 69/2001 (HY)
Tsuen Wan Bypass, Widening of Tsuen Wan Road between Tsuen Tsing Interchange and Kwai Tsing Interchange and Associated Junction Improvement Works

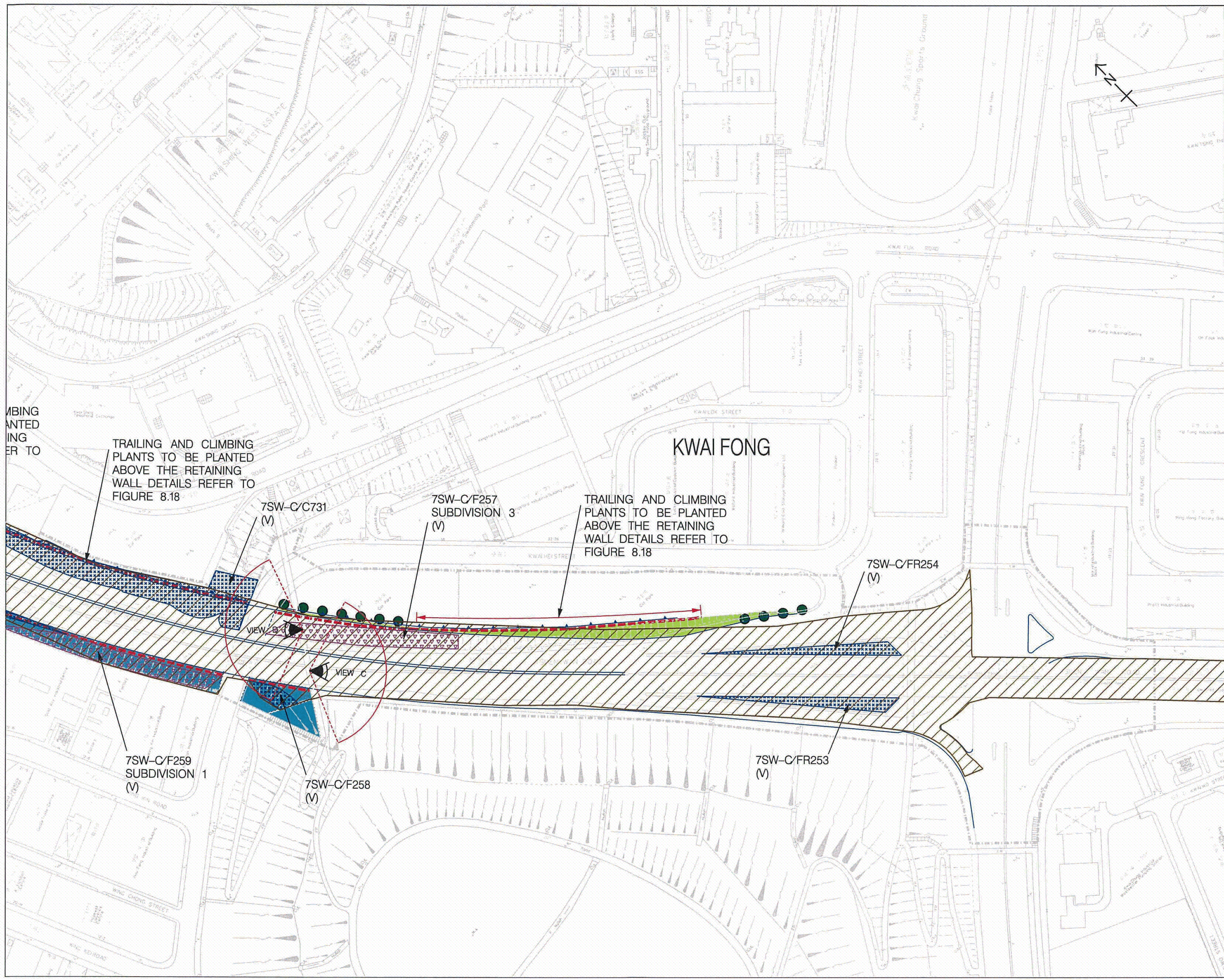
CONCEPTUAL PLANTING PLAN

SHEET 4 OF 5

Drawing No. 圖號	01345/1704			
Designed 設計	Drawn 繪圖	Checked 校核	Scale 比例	
ACWC	HAX	JT	1:1000(A1)	
Approved 批准	Date 日期	Status 狀況		
JT	09/08	PRELIMINARY		

Scott Wilson Ltd
偉信顧問集團有限公司





NOTES:
1. GENERAL NOTES REFER TO FIGURE 8.5.

Rev.	Date	Description	Drawn	Checked

CEDD CIVIL ENGINEERING AND DEVELOPMENT DEPARTMENT
New Territories North and West Development Office

Consultancy Agreement No. CE 69/2001 (HY)
Tsuen Wan Bypass, Widening of Tsuen Wan Road between Tsuen Tsing Interchange and Kwai Tsing Interchange and Associated Junction Improvement Works

CONCEPTUAL PLANTING PLAN

SHEET 5 OF 5

Drawing No.	01345/1705			
Designed	Drawn	Checked	Scale	
設計 ACWC	繪圖 HAX	校核 JT	比例 1:1000(A1)	
Approved	Date	Status		
批准 JT	日期 09/08	圖說 PRELIMINARY		