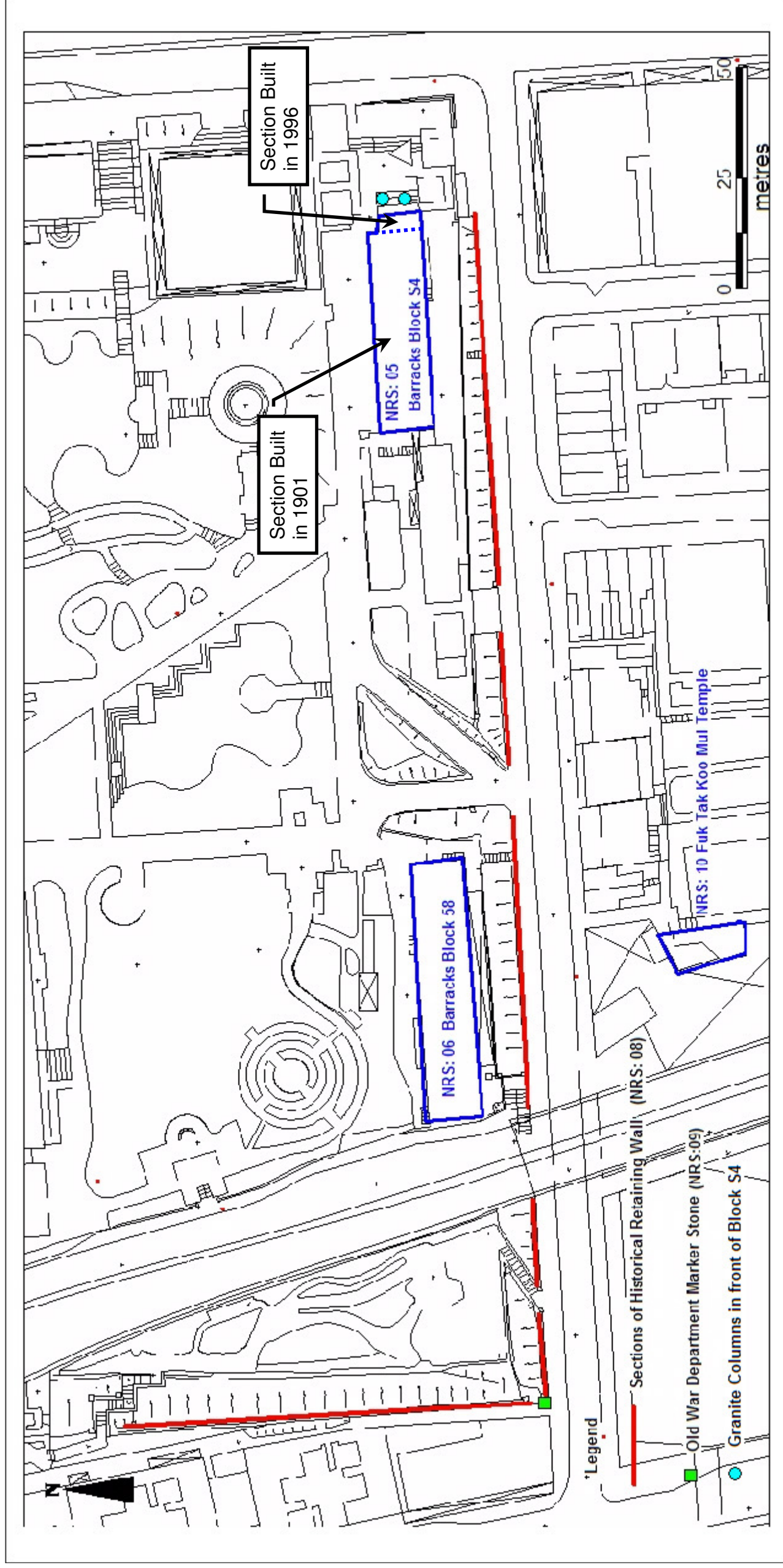


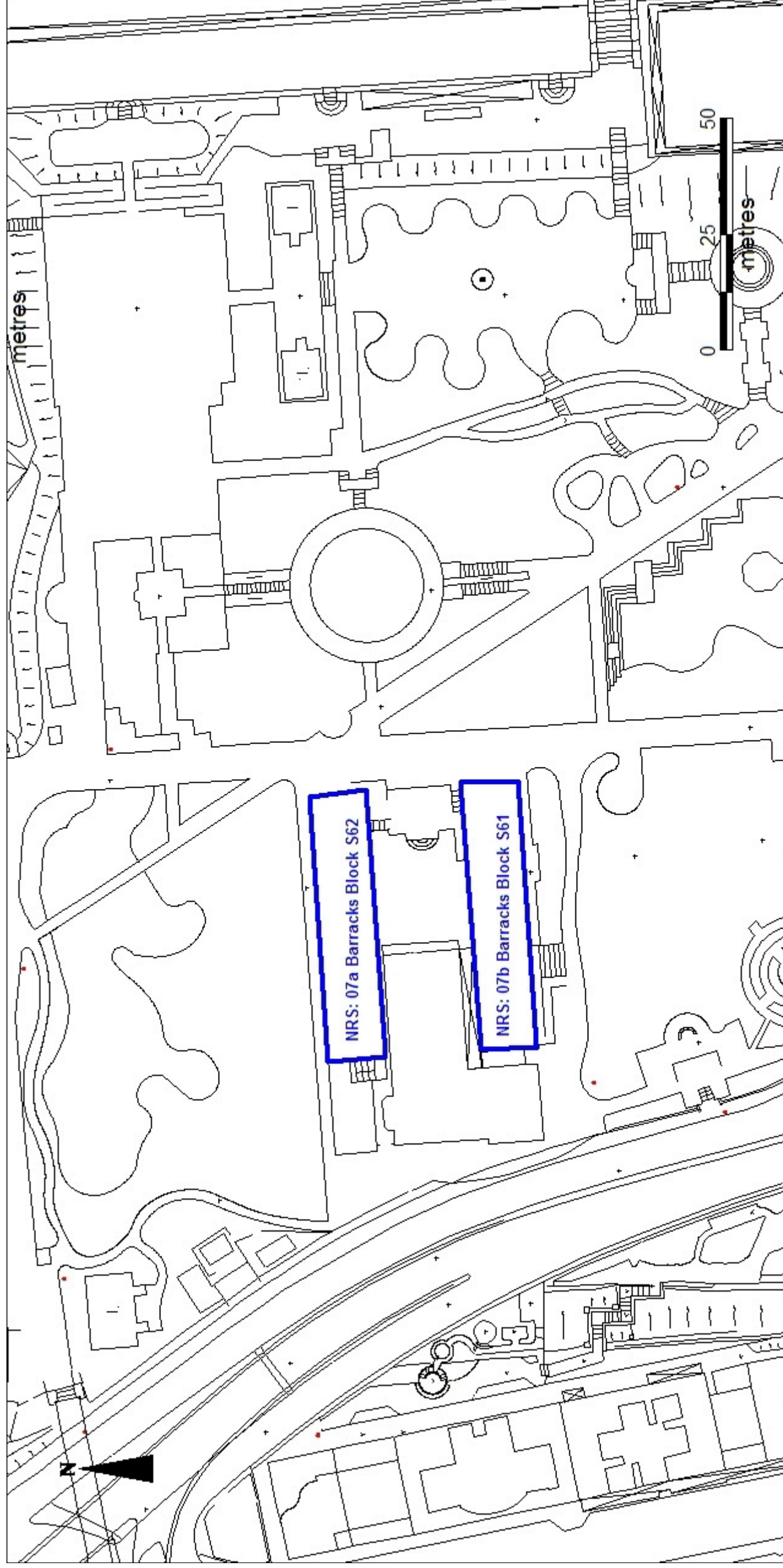
List of Annex

- Annex 1 Map showing the location and boundary of the Former Whitfield Barracks Block S4, Block 58 and the historic retaining wall, war department boundary stone and the Fuk Tak Koo Mui Temple
- Annex 2 Map showing the location and boundary of the Former Whitfield Barracks Blocks S61 and S62
- Annex 3 Map showing the location and boundary of the Former Kowloon West II Battery
- Annex 4 Map showing the location and boundary of the Former Kowloon British School, the Hong Kong Observatory and St. Andrew's Church, Vicarage and associated ruins
- Annex 5 Map showing the location and boundary of the building at 190 Nathan Road
- Annex 6 Map showing the locations of all Built Heritage Sites

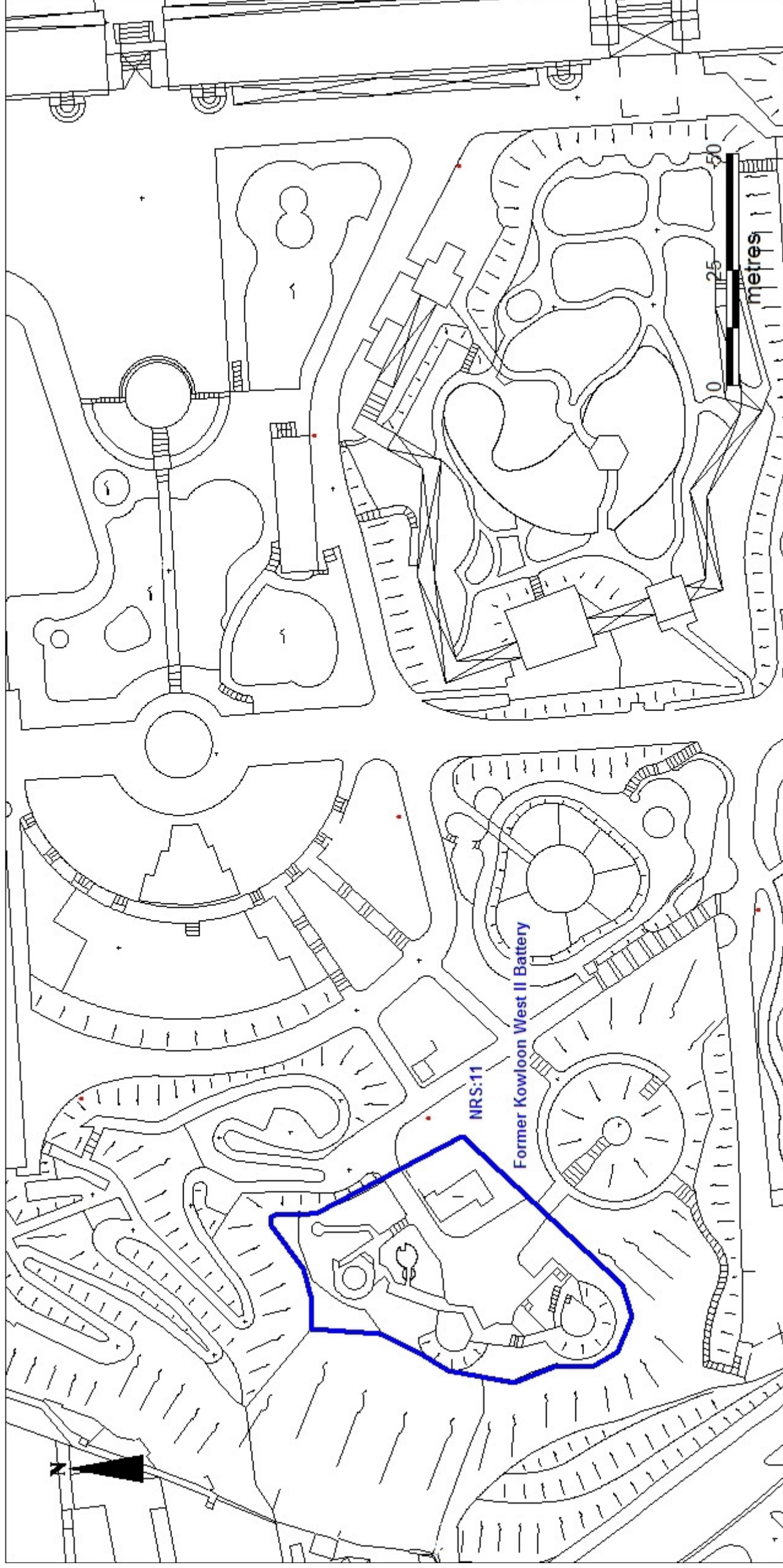
Annex 1 Map showing the location and boundary of the Former Whitfield Barracks Block S4, Block 58 and the historic retaining wall, war department boundary stone and the Fuk Tak Koo Mui Temple



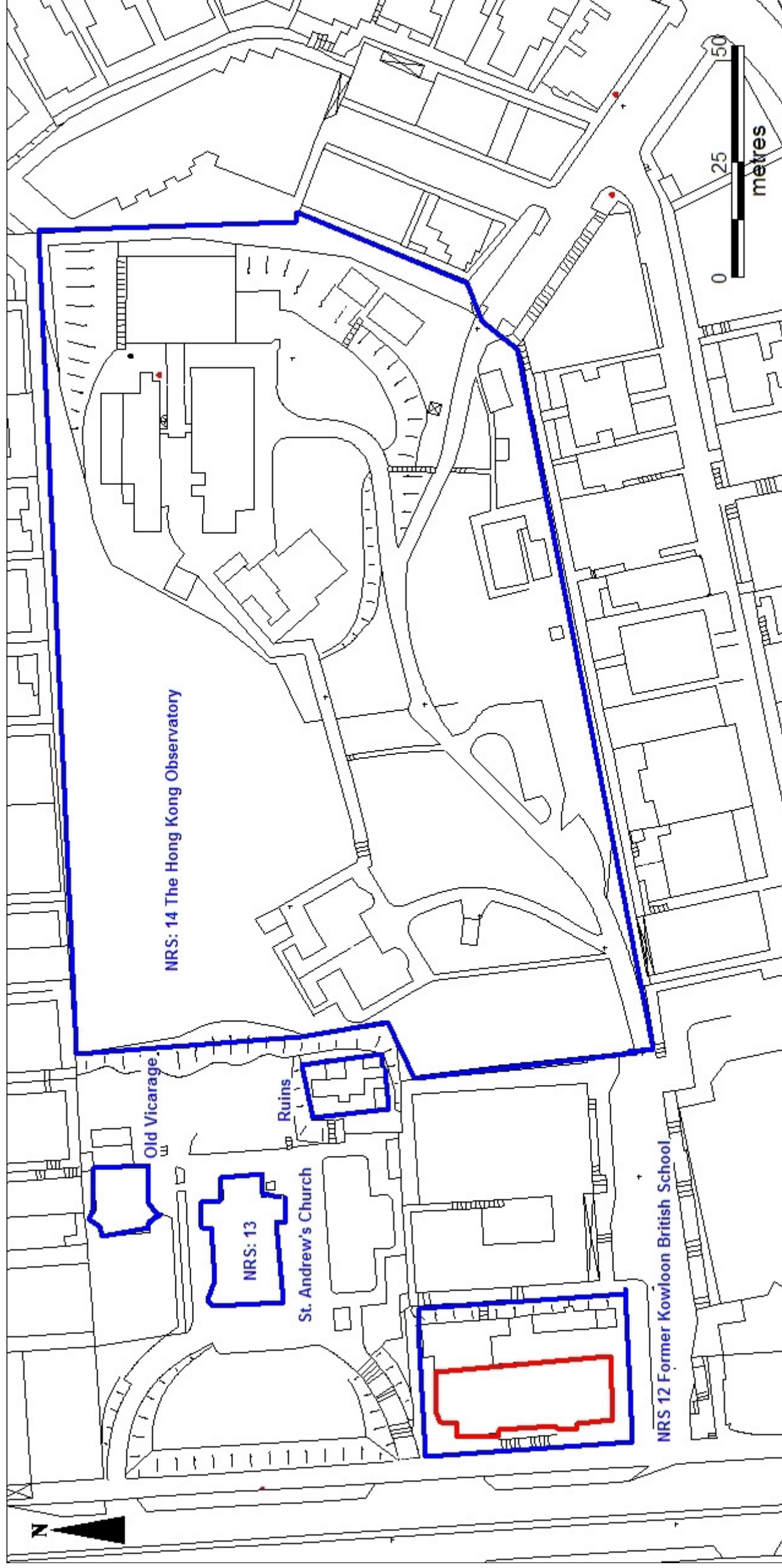
Annex 2 Map showing the location and boundary of the Former Whitfield Barracks Blocks S61 and S62



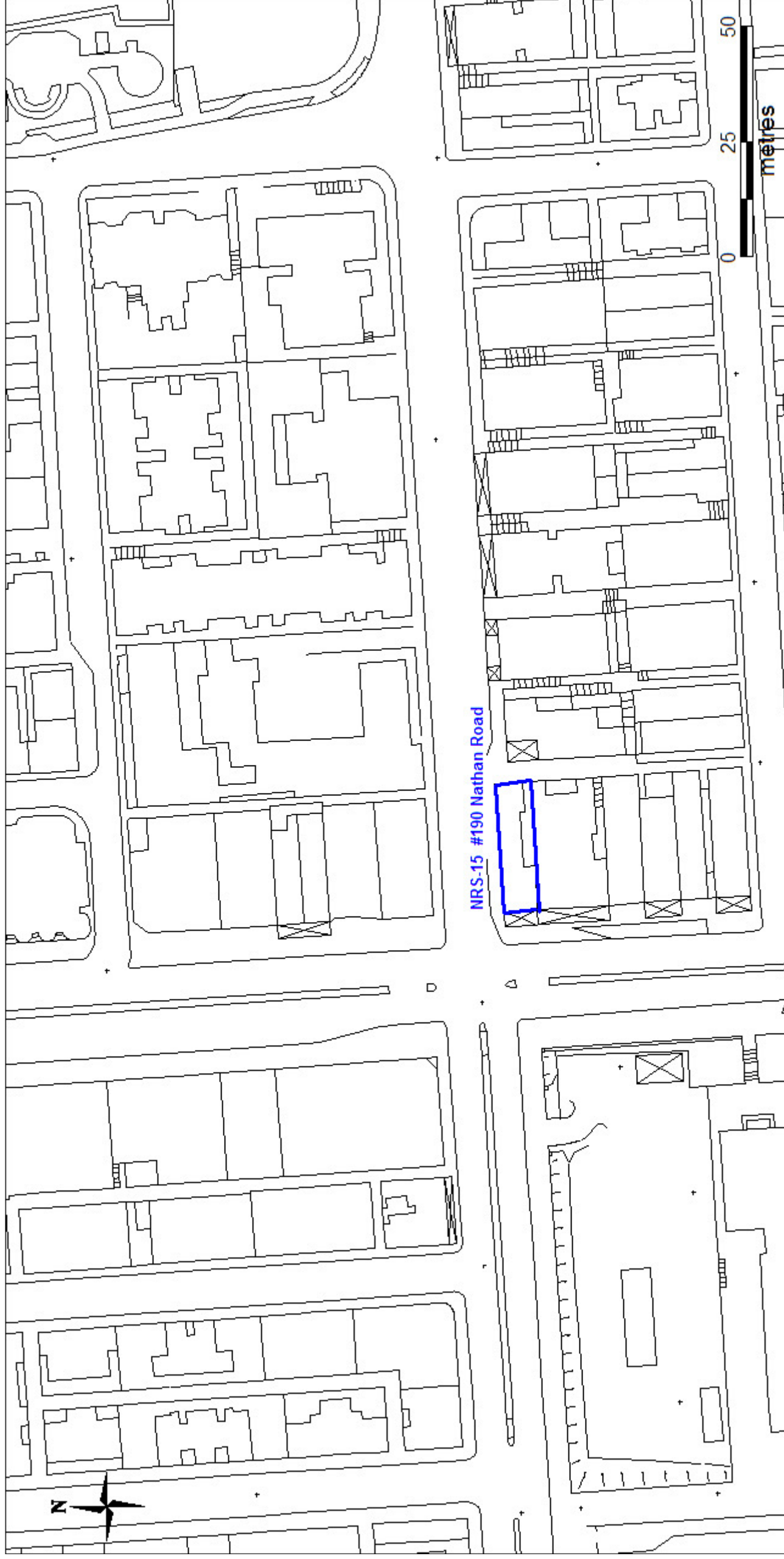
Annex 3 Map showing the location and boundary of the Former Kowloon West II Battery



Annex 4 Map showing the location and boundary of the Former Kowloon British School, the Hong Kong Observatory and St. Andrew's Church, Vicarage and associated ruins



Annex 5 Map showing the location and boundary of the building at 190 Nathan Road



Annex 6 Map showing the locations of all Built Heritage Sites

