

**LEGEND:**

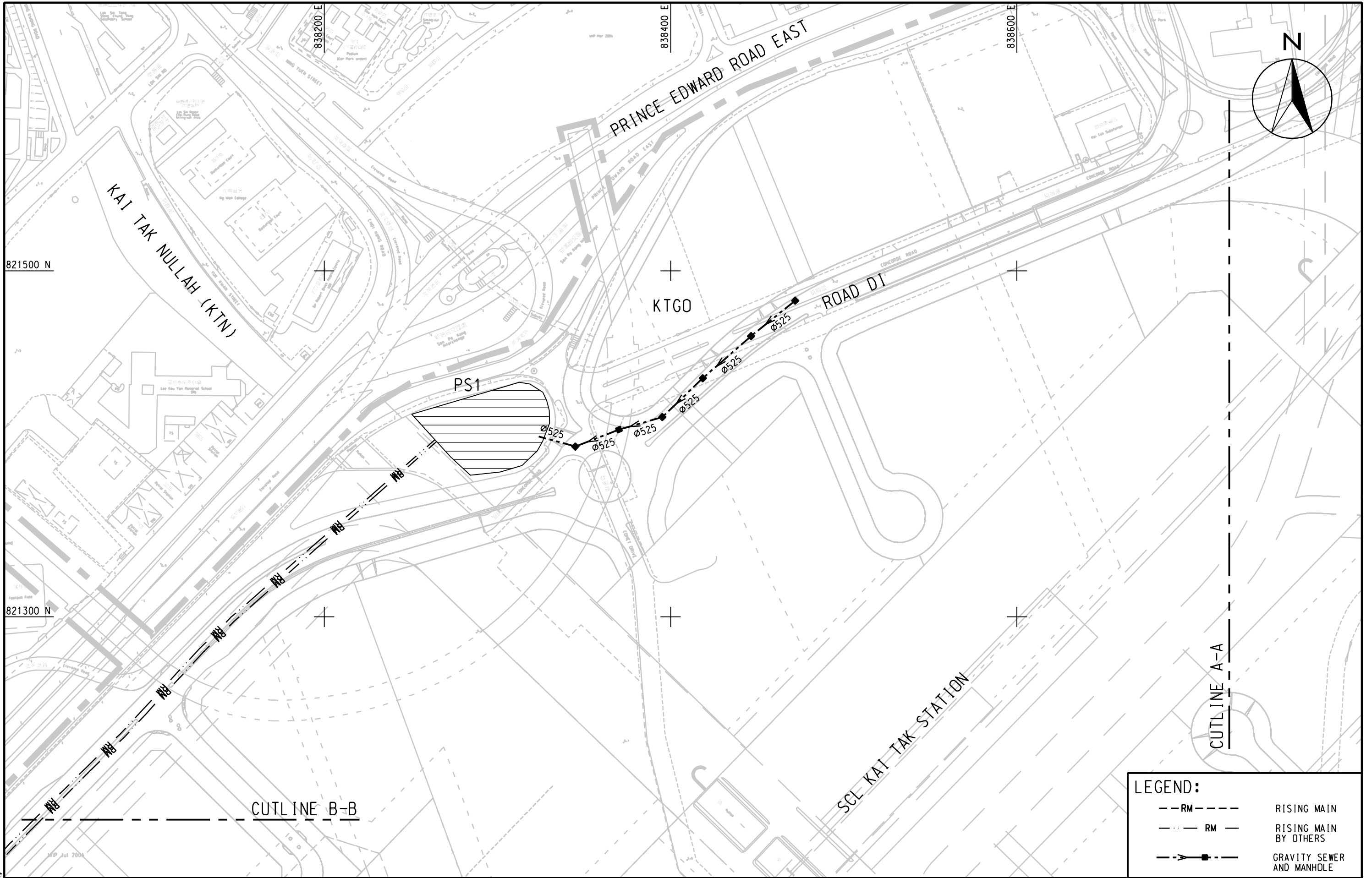
|                  |                       |
|------------------|-----------------------|
| --- RM ---       | RISING MAIN           |
| - - - RM - - -   | RISING MAIN BY OTHERS |
| - - - -> - - - - | GRAVITY SEWER         |

AGREEMENT NO. CE 35/2006 (CE)  
 KAI TAK DEVELOPMENT ENGINEERING STUDY CUM DESIGN AND CONSTRUCTION OF ADVANCE WORKS-INVESTIGATION, DESIGN AND CONSTRUCTION

**PROPOSED SEWERAGE NETWORK (INTERIM SCHEME) - KEY PLAN**

|         |          |             |           |
|---------|----------|-------------|-----------|
| SCALE   | 1:15000  | DATE        | JAN. 2008 |
| CHECK   | --       | DRAWN       | LL        |
| JOB No. | 60022408 | DRAWING No. | FIG 16.16 |
|         |          | REV         | A         |

LUDX  
 Plotting By: 2008-5-28  
 PLOT SCALE: \$SCALE\$SHORTS



**LEGEND:**

|                |                           |
|----------------|---------------------------|
| --- RM ---     | RISING MAIN               |
| - - - RM - - - | RISING MAIN BY OTHERS     |
| --->---        | GRAVITY SEWER AND MANHOLE |

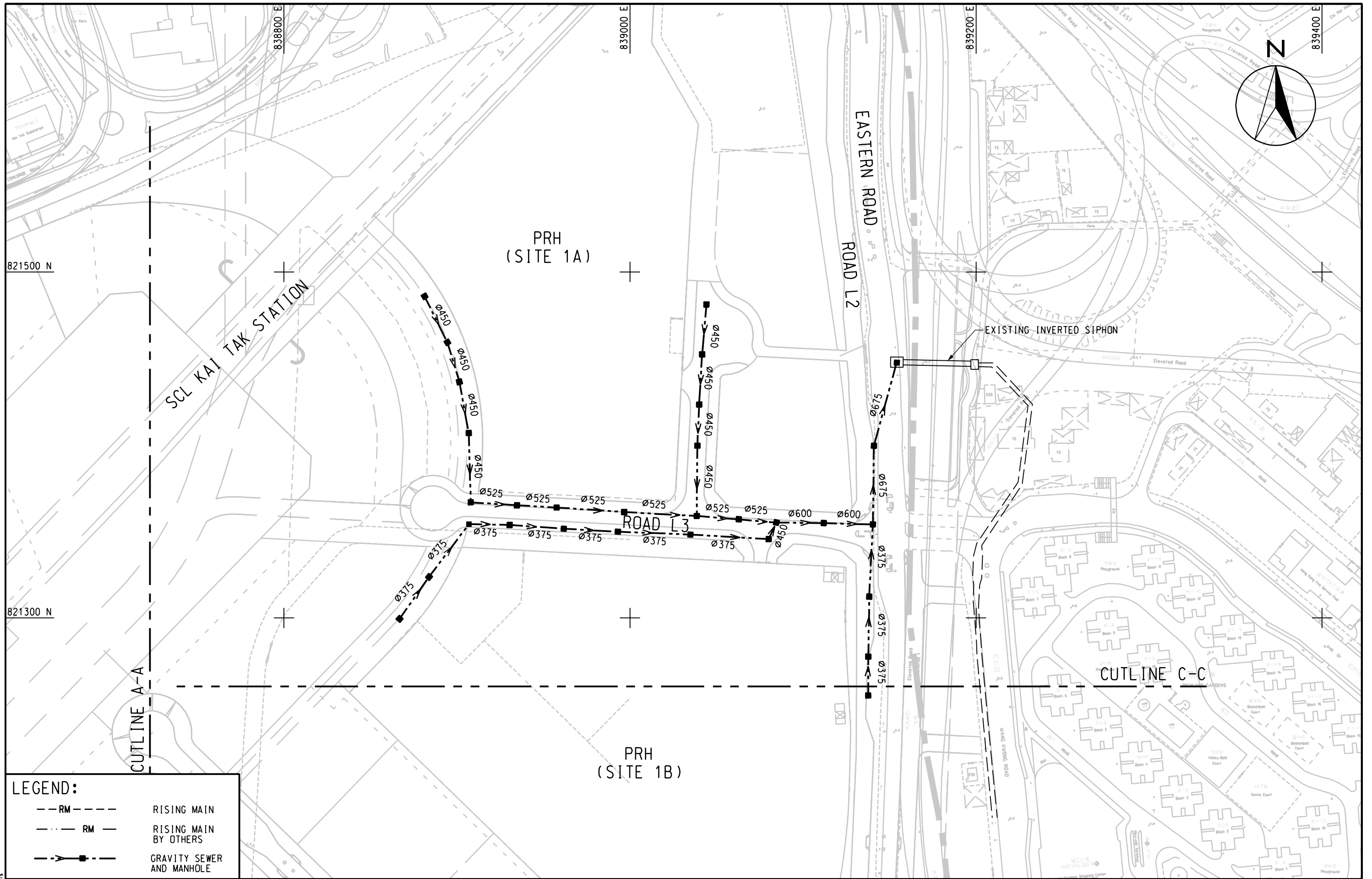
MAUNSELL | AECOM  
Maunsell Consultants Asia Ltd

AGREEMENT NO. CE 35/2006 (CE)  
KAI TAK DEVELOPMENT ENGINEERING STUDY CUM DESIGN AND CONSTRUCTION OF ADVANCE WORKS-INVESTIGATION, DESIGN AND CONSTRUCTION

**PROPOSED SEWERAGE NETWORK ( INTERIM SCHEME )**

( SHEET 1 OF 9 )

|         |          |             |           |
|---------|----------|-------------|-----------|
| SCALE   | 1:2000   | DATE        | JAN. 2008 |
| CHECK   | --       | DRAWN       | LLJ       |
| JOB No. | 60022408 | DRAWING No. | FIG 16.17 |
|         |          | REV         | A         |



**LEGEND:**

|                |                           |
|----------------|---------------------------|
| --- RM ---     | RISING MAIN               |
| - - - RM - - - | RISING MAIN BY OTHERS     |
| - - -> - - -   | GRAVITY SEWER AND MANHOLE |

LUDX  
 2008-5-27  
 PLOT SCALE: 1:5000

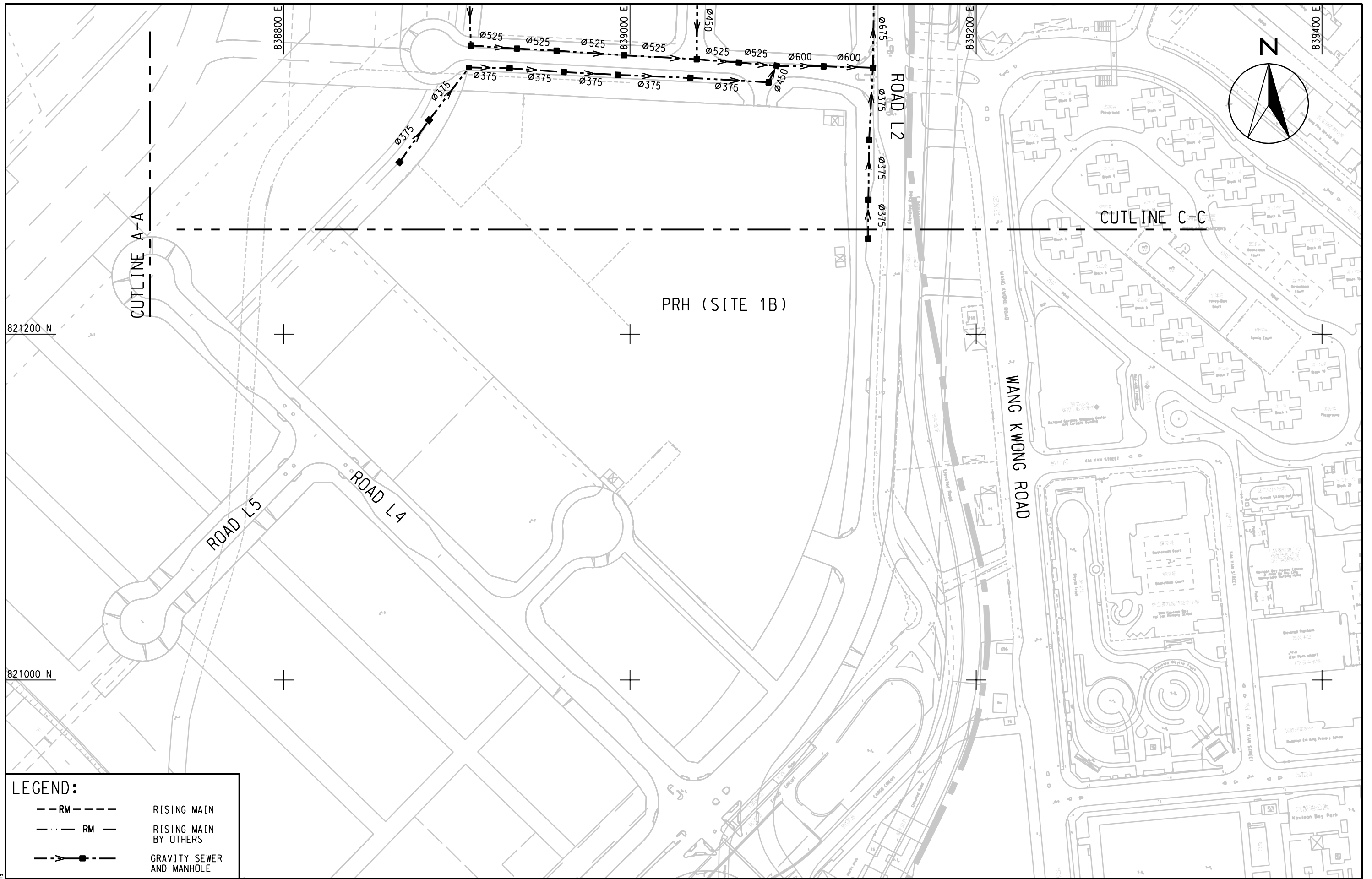
**MAUNSELL | AECOM**  
 Maunsell Consultants Asia Ltd

AGREEMENT NO. CE 35/2006 (CE)  
 KAI TAK DEVELOPMENT ENGINEERING STUDY CUM DESIGN AND CONSTRUCTION OF ADVANCE WORKS-INVESTIGATION, DESIGN AND CONSTRUCTION

**PROPOSED SEWERAGE NETWORK (INTERIM SCHEME)**

(SHEET 2 OF 9)

|         |          |             |           |
|---------|----------|-------------|-----------|
| SCALE   | 1:2000   | DATE        | JAN. 2008 |
| CHECK   | --       | DRAWN       | LLJ       |
| JOB No. | 60022408 | DRAWING No. | FIG 16.18 |
|         |          | REV         | A         |



**LEGEND:**

|            |                           |
|------------|---------------------------|
| --- RM --- | RISING MAIN               |
| --- RM --- | RISING MAIN BY OTHERS     |
| --->---    | GRAVITY SEWER AND MANHOLE |

AGREEMENT NO. CE 35/2006 (CE)  
 KAI TAK DEVELOPMENT ENGINEERING STUDY CUM DESIGN AND CONSTRUCTION OF ADVANCE WORKS-INVESTIGATION, DESIGN AND CONSTRUCTION

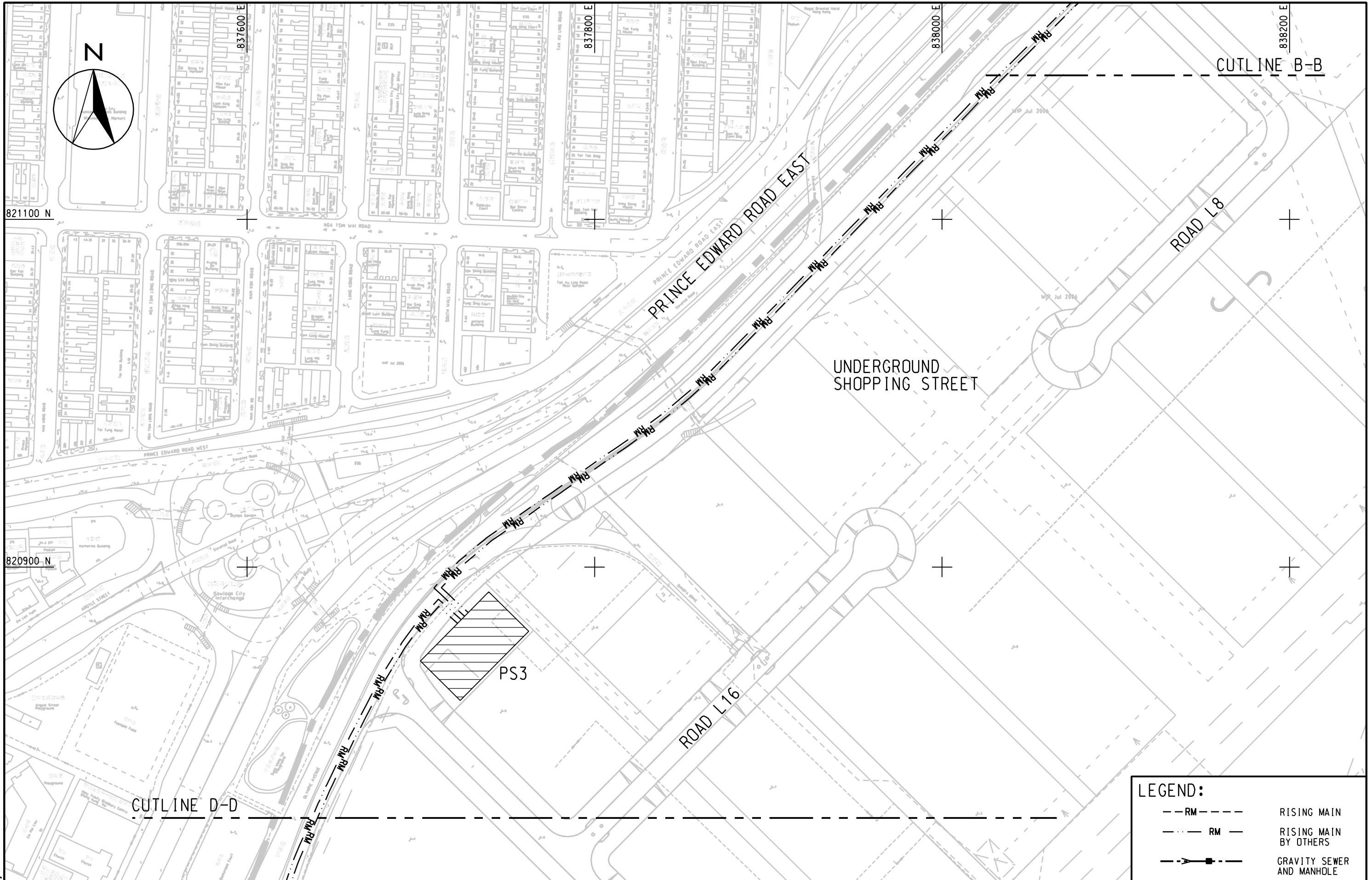
**PROPOSED SEWERAGE NETWORK (INTERIM SCHEME)**

(SHEET 3 OF 9)

|         |          |             |           |
|---------|----------|-------------|-----------|
| SCALE   | 1:2000   | DATE        | JAN. 2008 |
| CHECK   | --       | DRAWN       | LLJ       |
| JOB No. | 60022408 | DRAWING No. | FIG 16.19 |
|         |          | REV         | A         |

PLOTTING BY: 2008-5-27  
 PLOT SCALE: 1:5000

**MAUNSELL | AECOM**  
 Maunsell Consultants Asia Ltd



**LEGEND:**

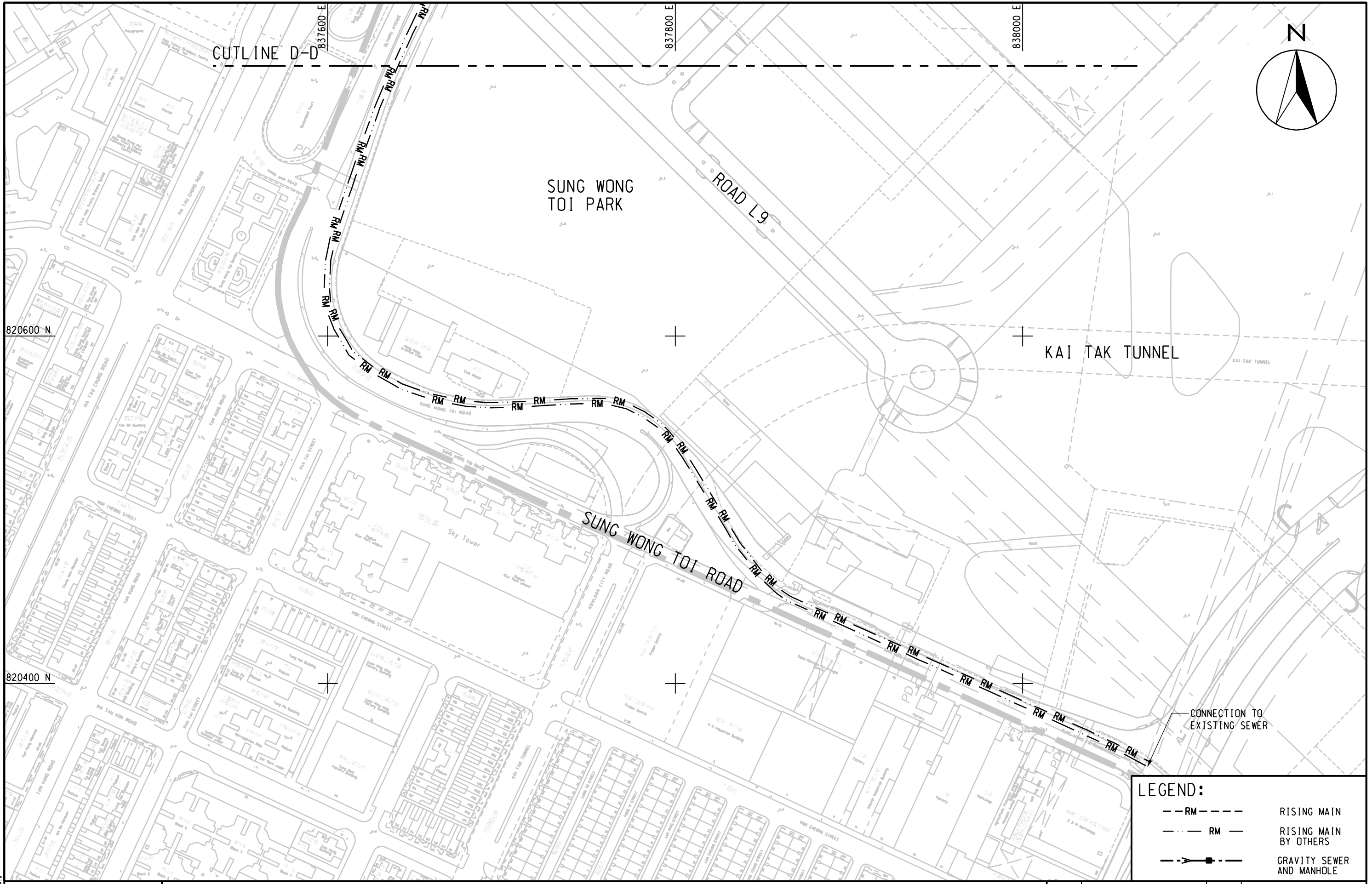
|            |                           |
|------------|---------------------------|
| --- RM --- | RISING MAIN               |
| --- RM --- | RISING MAIN BY OTHERS     |
| --->---    | GRAVITY SEWER AND MANHOLE |

MAUNSELL AECOM  
Maunsell Consultants Asia Ltd

AGREEMENT NO. CE 35/2006 (CE)  
KAI TAK DEVELOPMENT ENGINEERING STUDY CUM DESIGN AND CONSTRUCTION OF ADVANCE WORKS-INVESTIGATION, DESIGN AND CONSTRUCTION  
**PROPOSED SEWERAGE NETWORK ( INTERIM SCHEME )**

|         |          |             |           |
|---------|----------|-------------|-----------|
| SCALE   | 1:2000   | DATE        | JAN.2008  |
| CHECK   | --       | DRAWN       | LLJ       |
| JOB NO. | 60022408 | DRAWING No. | FIG 16.20 |
|         |          | REV         | A         |

(SHEET 4 OF 9)



**LEGEND:**

|            |                           |
|------------|---------------------------|
| --- RM --- | RISING MAIN               |
| --- RM --- | RISING MAIN BY OTHERS     |
| --->---    | GRAVITY SEWER AND MANHOLE |

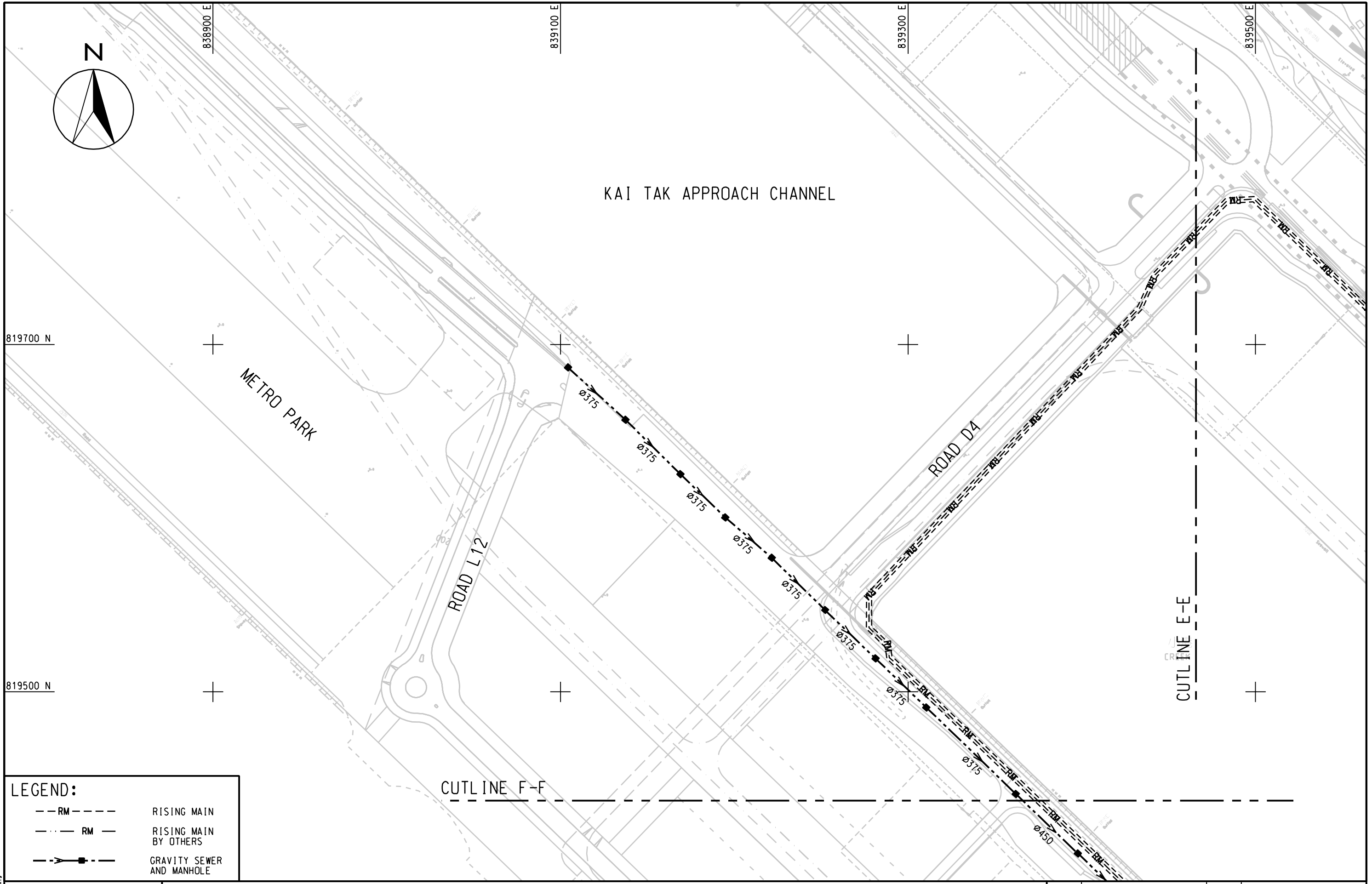
AGREEMENT NO. CE 35/2006 (CE)  
 KAI TAK DEVELOPMENT ENGINEERING STUDY CUM DESIGN AND CONSTRUCTION OF ADVANCE WORKS- INVESTIGATION, DESIGN AND CONSTRUCTION

**PROPOSED SEWERAGE NETWORK ( INTERIM SCHEME )**

( SHEET 5 OF 9 )

|         |          |             |           |
|---------|----------|-------------|-----------|
| SCALE   | 1:2000   | DATE        | JAN. 2008 |
| CHECK   | --       | DRAWN       | LLJ       |
| JOB No. | 60022408 | DRAWING No. | FIG 16.21 |
|         |          | REV         | A         |

**MAUNSELL | AECOM**  
 Maunsell Consultants Asia Ltd



**LEGEND:**

|          |                           |
|----------|---------------------------|
| ---RM--- | RISING MAIN               |
| ---RM--- | RISING MAIN BY OTHERS     |
| --->---  | GRAVITY SEWER AND MANHOLE |

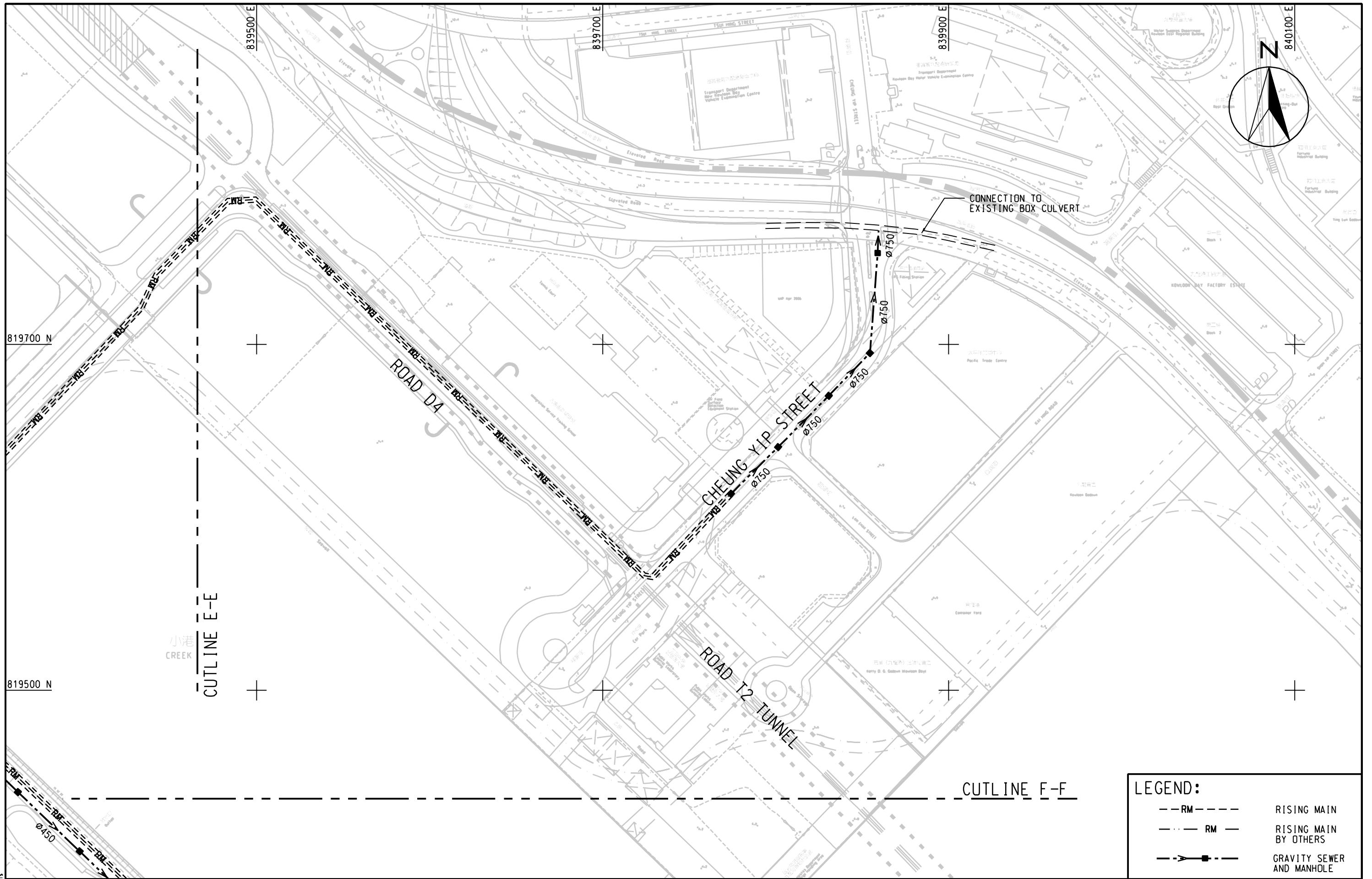
MAUNSELL | AECOM  
Maunsell Consultants Asia Ltd

AGREEMENT NO. CE 35/2006 (CE)  
KAI TAK DEVELOPMENT ENGINEERING STUDY CUM DESIGN AND CONSTRUCTION OF ADVANCE WORKS-INVESTIGATION, DESIGN AND CONSTRUCTION  
**PROPOSED SEWERAGE NETWORK (INTERIM SCHEME)**

(SHEET 6 OF 9)

|         |          |             |           |
|---------|----------|-------------|-----------|
| SCALE   | 1:2000   | DATE        | JAN. 2008 |
| CHECK   | --       | DRAWN       | LLJ       |
| JOB No. | 60022408 | DRAWING No. | FIG 16.22 |
|         |          | REV         | A         |

Plotting By: 2008-5-28  
 LUDK  
 PLOT SCALE: \$SCALESHORTS



**LEGEND:**

|  |    |                           |
|--|----|---------------------------|
|  | RM | RISING MAIN               |
|  | RM | RISING MAIN BY OTHERS     |
|  |    | GRAVITY SEWER AND MANHOLE |

MAUNSELL | AECOM  
Maunsell Consultants Asia Ltd

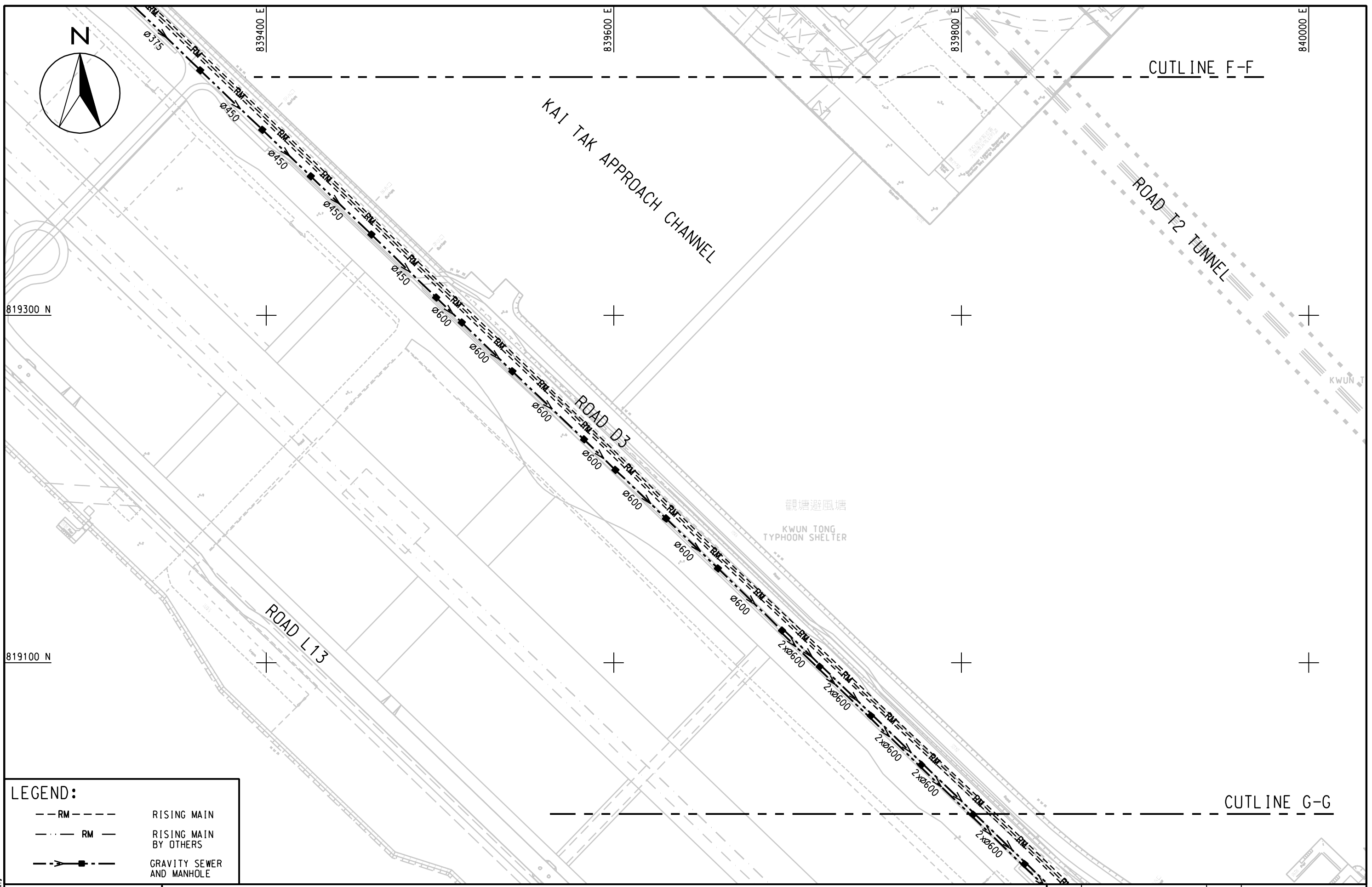
AGREEMENT NO. CE 35/2006 (CE)  
KAI TAK DEVELOPMENT ENGINEERING STUDY CUM DESIGN AND CONSTRUCTION OF ADVANCE WORKS-INVESTIGATION, DESIGN AND CONSTRUCTION

PROPOSED SEWERAGE NETWORK (INTERIM SCHEME)

(SHEET 7 OF 9)

|         |          |             |           |
|---------|----------|-------------|-----------|
| SCALE   | 1:2000   | DATE        | JAN. 2008 |
| CHECK   | --       | DRAWN       | LLJ       |
| JOB No. | 60022408 | DRAWING No. | FIG 16.23 |
|         |          | REV         | A         |





**LEGEND:**

|  |                           |
|--|---------------------------|
|  | RISING MAIN               |
|  | RISING MAIN BY OTHERS     |
|  | GRAVITY SEWER AND MANHOLE |

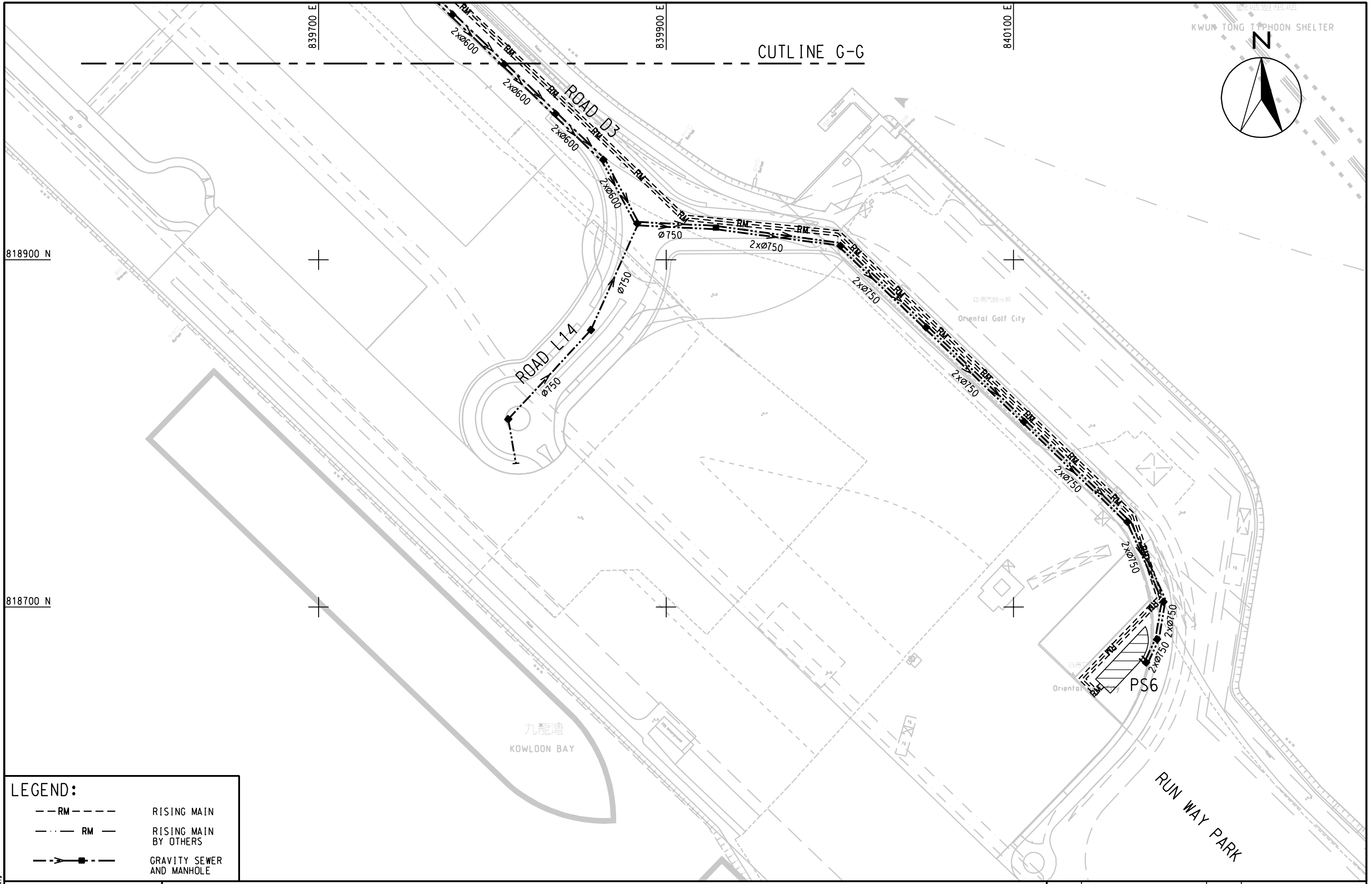
**MAUNSELL | AECOM**  
Maunsell Consultants Asia Ltd

AGREEMENT NO. CE 35/2006 (CE)  
KAI TAK DEVELOPMENT ENGINEERING STUDY CUM DESIGN AND CONSTRUCTION OF ADVANCE WORKS-INVESTIGATION, DESIGN AND CONSTRUCTION  
**PROPOSED SEWERAGE NETWORK (INTERIM SCHEME)**

(SHEET 8 OF 9)

|         |          |             |           |
|---------|----------|-------------|-----------|
| SCALE   | 1:2000   | DATE        | JAN.2008  |
| CHECK   | --       | DRAWN       | LLJ       |
| JOB No. | 60022408 | DRAWING No. | FIG 16.24 |
|         |          | REV         | A         |

LUDX  
 Plotting By: 2008-5-26  
 PLOT SCALE: SCALES/SHORTS



**LEGEND:**

|          |                           |
|----------|---------------------------|
| ---RM--- | RISING MAIN               |
| ---RM--- | RISING MAIN BY OTHERS     |
| --->---  | GRAVITY SEWER AND MANHOLE |

MAUNSELL | AECOM  
Maunsell Consultants Asia Ltd

AGREEMENT NO. CE 35/2006 (CE)  
KAI TAK DEVELOPMENT ENGINEERING STUDY CUM DESIGN AND CONSTRUCTION OF ADVANCE WORKS-INVESTIGATION, DESIGN AND CONSTRUCTION  
**PROPOSED SEWERAGE NETWORK (INTERIM SCHEME)**

|         |          |             |           |
|---------|----------|-------------|-----------|
| SCALE   | 1:2000   | DATE        | JAN. 2008 |
| CHECK   | --       | DRAWN       | LX        |
| JOB No. | 60022408 | DRAWING No. | FIG 16.25 |
|         |          | REV         | A         |

(SHEET 9 OF 9)