

BASEMENT PLAN

AECOM

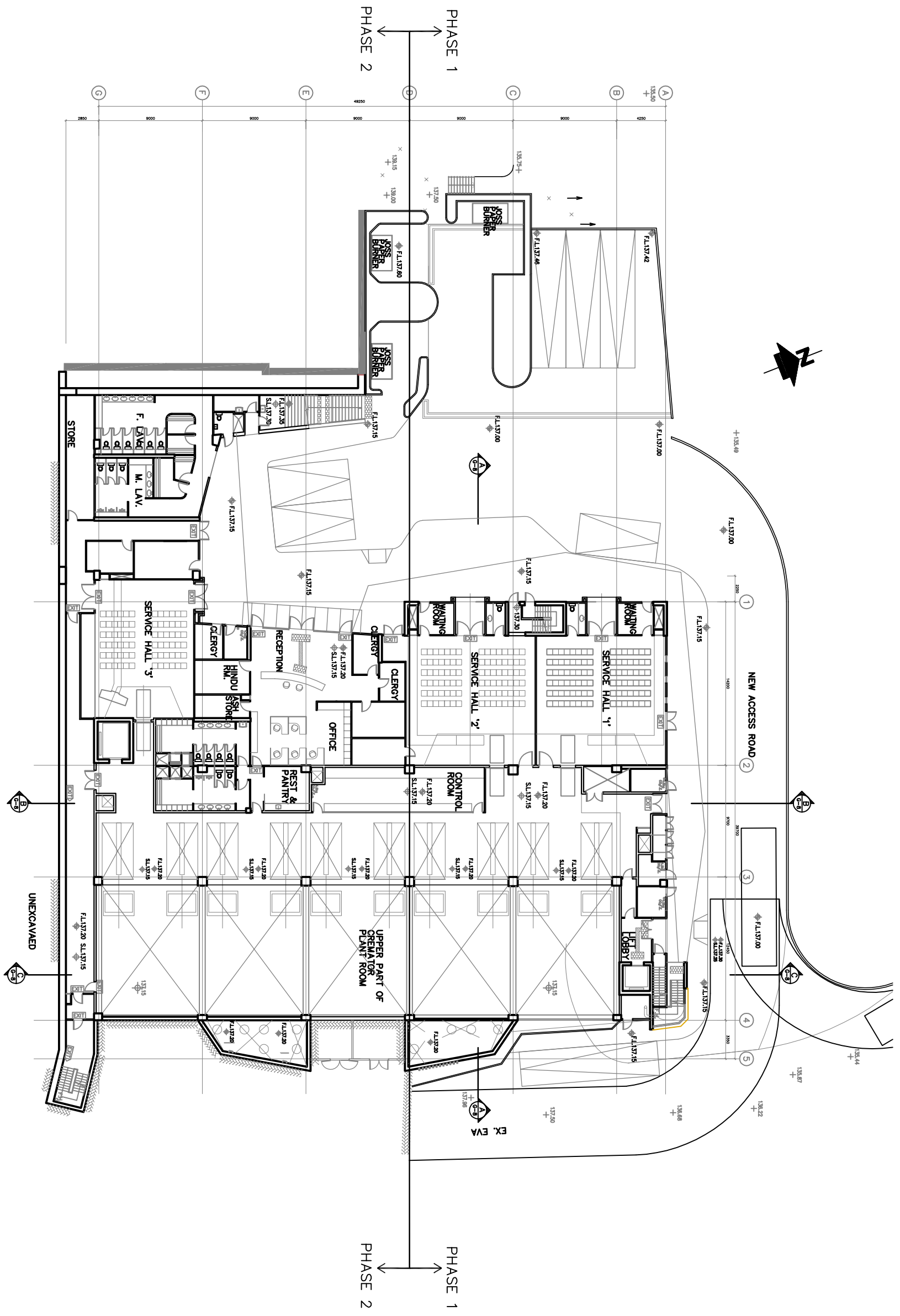
ENSR
MAUNSELL
ENSR Asia (HK) Ltd.

PWP NO. 016NB
PHASED REPROVISIONING OF CAPE COLLINSON CREMATORIUM

FLOOR PLANS

(SHEET 1 OF 6)

SCALE	AS SHOWN	DATE	FEB 09
CHECK	DCFL	DRAWN	CCCM
JOB No.	60028568	DRAWING No.	FIGURE 2.5
		REV	-



LEVEL 1 (+137.15) FLOOR PLAN

4 2 0 10 20
m

ENSR
MAUNSELL
ENSR Asia (HK) Ltd.

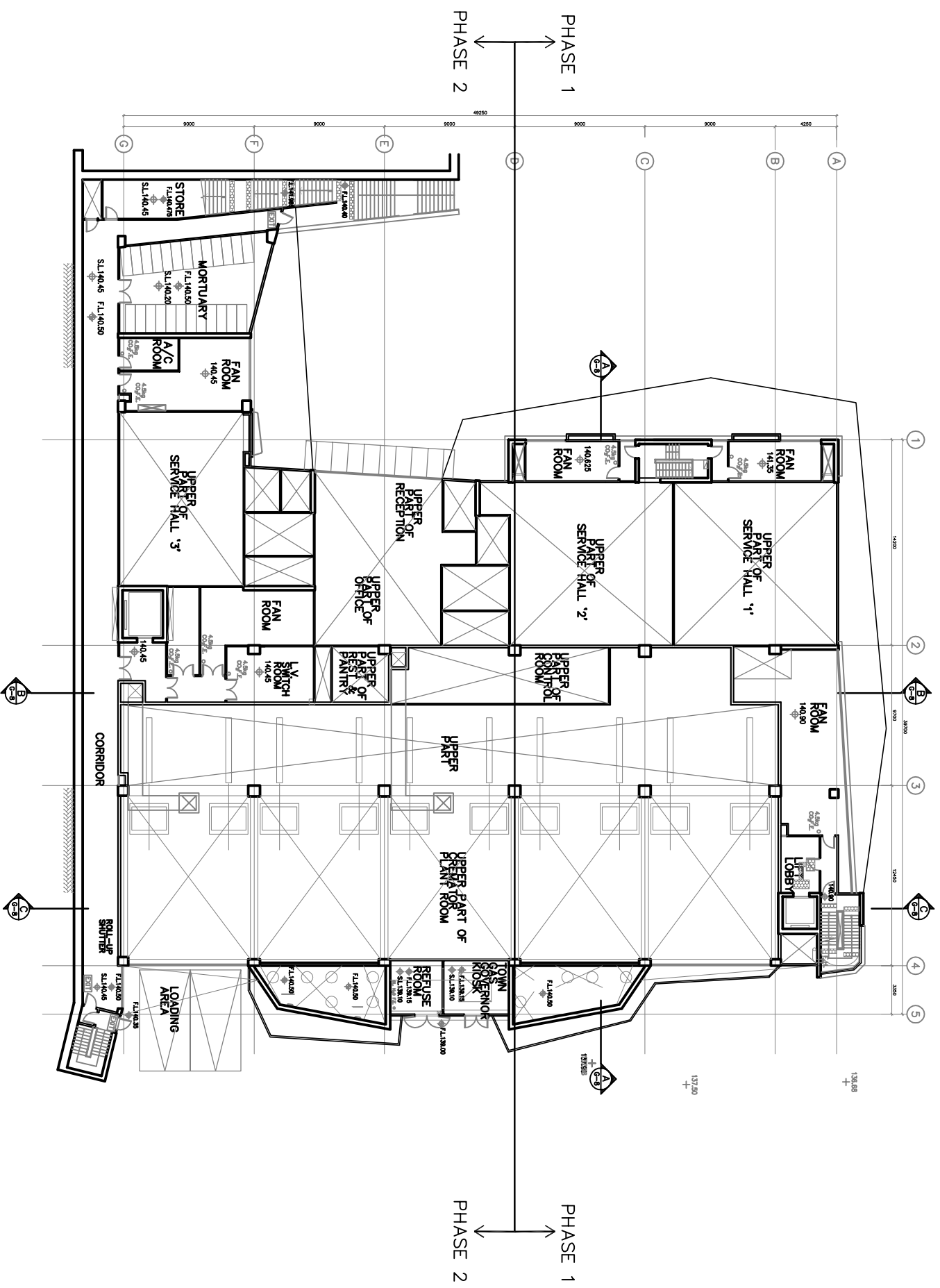
AECOM

PHASED REPROVISIONING OF CAPE COLLINSON CREMATORIUM

FLOOR PLANS

(SHEET 2 OF 6)

SCALE	AS SHOWN	DATE	FEB 09
CHECK	DCFL	DRAWN	CCCM
JOB No.	60028568	DRAWING No.	FIGURE 2.5
		REV	-



MEZZ. (+140.45) FLOOR PLAN

ENSR
MAUNSELL
ENSR Asia (HK) Ltd.

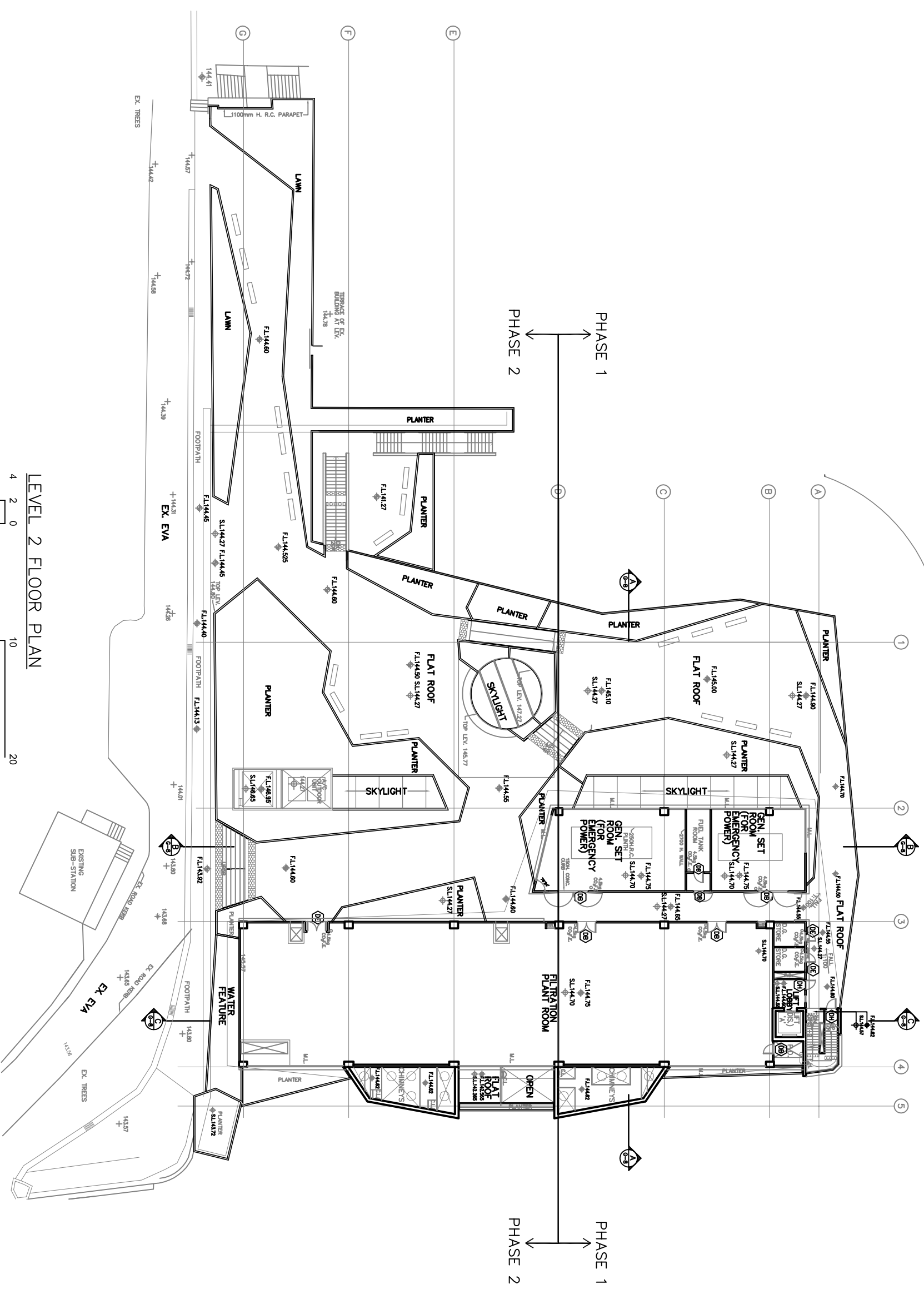
AECOM

PWP NO. 016NB
PHASED REPROVISIONING OF CAPE COLLINSON CREMATORIUM

FLOOR PLANS

(SHEET 3 OF 6)

SCALE	AS SHOWN	DATE	FEB 09
CHECK	DCFL	DRAWN	CCCM
JOB No.	60028568	DRAWING No.	FIGURE 2.5
		REV	-



LEVEL 2 FLOOR PLAN

0 10 20 m

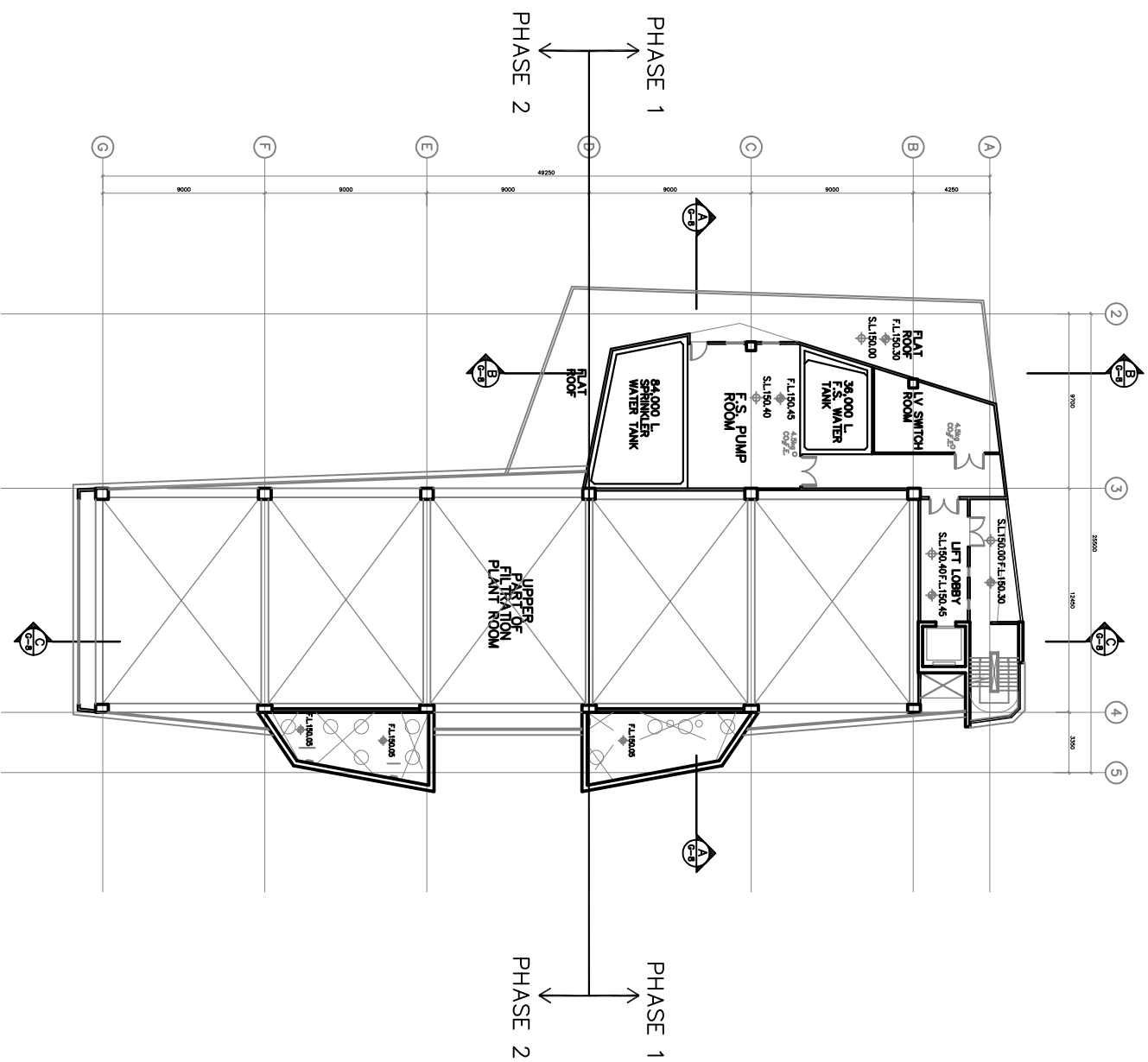
ENSR
MAUNSELL
 ENSR Asia (HK) Ltd.

AECOM

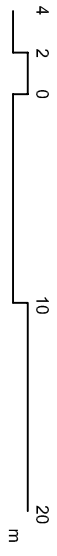
PWP NO. 016NB
 PHASED REPROVISIONING OF CAPE COLLINSON CREMATORIUM
FLOOR PLANS

(SHEET 4 OF 6)

SCALE	AS SHOWN	DATE	FEB 09
CHECK	DCFL	DRAWN	CCCM
JOB No.	60028568	DRAWING No.	FIGURE 2.5
		REV	-



LEVEL 3 FLOOR PLAN



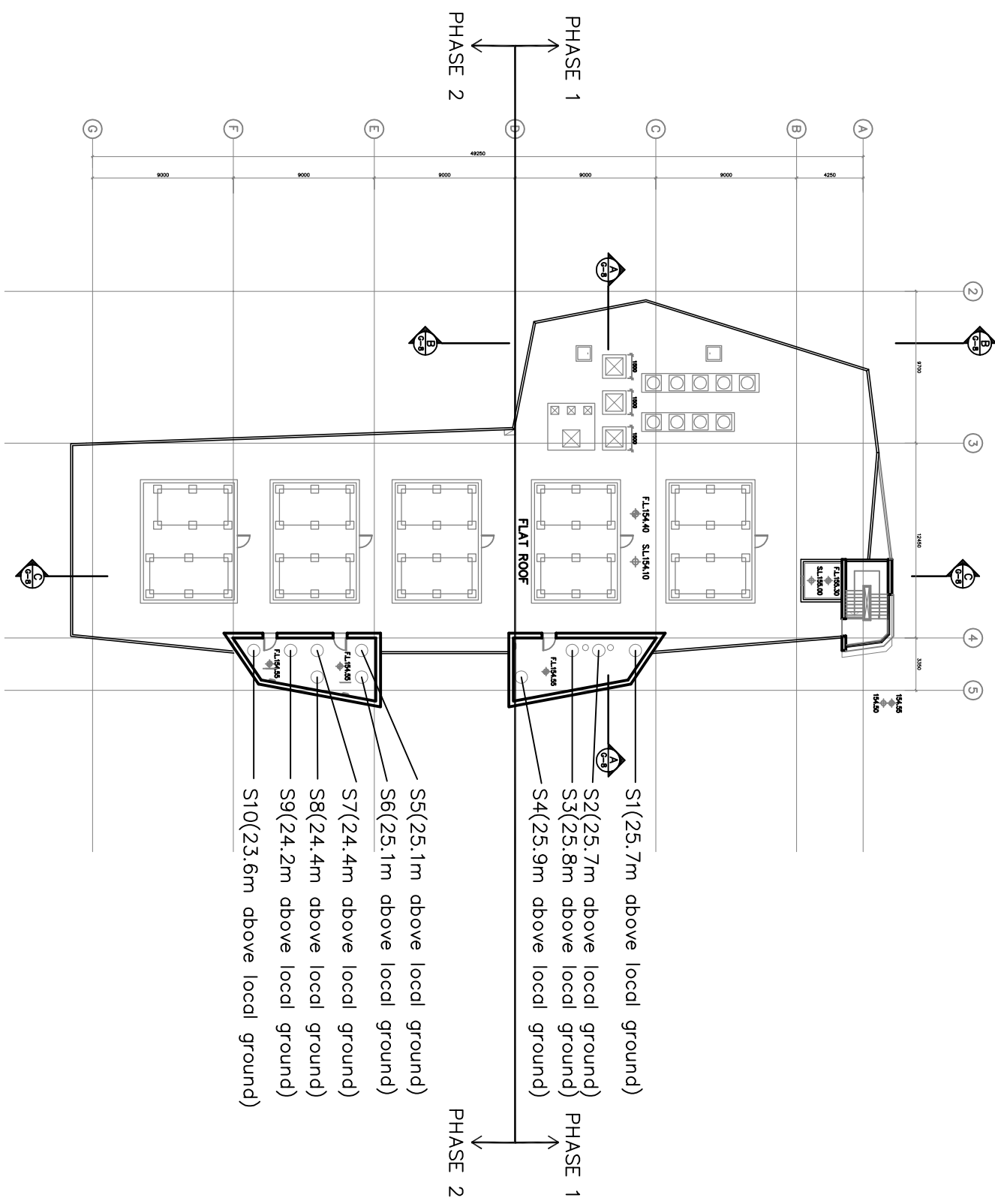
ENSR
MAUNSELL
ENSR Asia (HK) Ltd.

AECOM

PWP NO. 016NB
PHASED REPROVISIONING OF CAPE COLLINSON CREMATORIUM
FLOOR PLANS

(SHEET 5 OF 6)

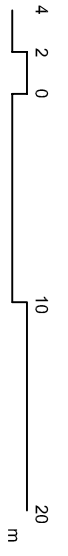
SCALE	AS SHOWN	DATE	FEB 09
CHECK	DCFL	DRAWN	CCCM
JOB No.	60028568	DRAWING No.	FIGURE 2.5
		REV	-



- S1(25.7m above local ground)
- S2(25.7m above local ground)
- S3(25.8m above local ground)
- S4(25.9m above local ground)
- S5(25.1m above local ground)
- S6(25.1m above local ground)
- S7(24.4m above local ground)
- S8(24.4m above local ground)
- S9(24.2m above local ground)
- S10(23.6m above local ground)

LEGEND:
S1-S10 CHIMNEYS

ROOF & UPPER ROOF PLAN



ENSR
MAUNSELL
ENSR Asia (HK) Ltd.

AECOM

PWP NO. 016NB
PHASED REPROVISIONING OF CAPE COLLINSON CREMATORIUM

FLOOR PLANS

(SHEET 6 OF 6)

SCALE	AS SHOWN	DATE	FEB 09
CHECK	DCFL	DRAWN	CCCM
JOB No.	60028568	DRAWING No.	FIGURE 2.5
		REV	-