

- LEGEND:**
- CONSTRUCTION WORKS
 - - - SITES BOUNDARY
 - - - 500m STUDY BOUNDARY
 - PERMANENT ABOVEGROUND FACILITIES
 - VENTILATION BUILDING
 - ACTIVE AGRICULTURE
 - INACTIVE AGRICULTURE
 - ACTIVE FISHPOND
 - INACTIVE FISHPOND/POND
 - REEDBED/FRESHWATER MARSH
 - WATERCOURSE
 - DRAINAGE CHANNEL
 - GRASSLAND
 - SEASONALLY WET GRASSLAND
 - SECONDARY WOODLAND
 - SHRUBLAND
 - PLANTATION
 - DEVELOPED AREA/WASTEGROUND

FOR CONTINUATION
SEE DWG. NOL/ERL/300/C/XRL/ENS/M51/221

MATCH LINE

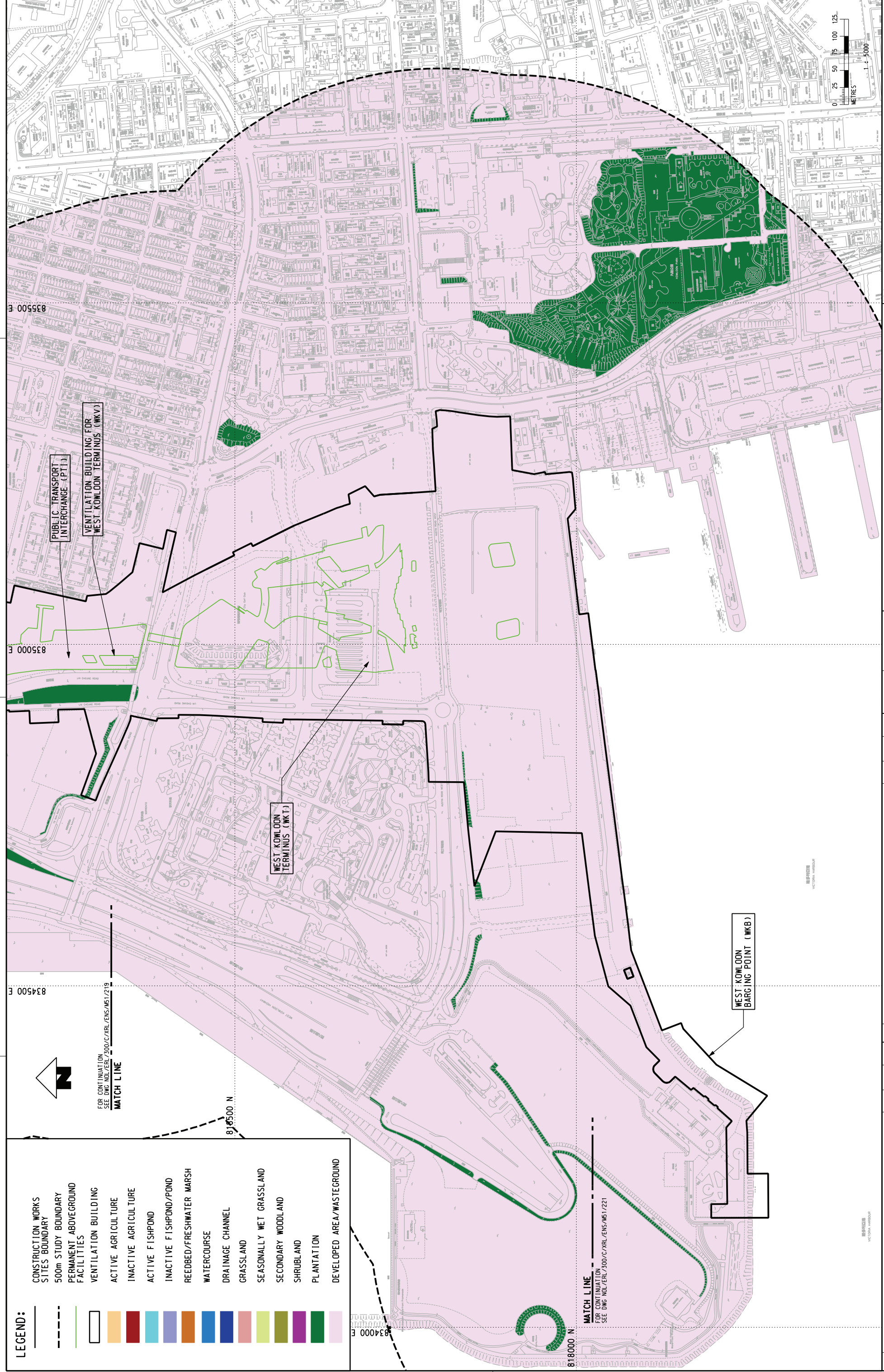
834500 E

818500 N

MATCH LINE
FOR CONTINUATION
SEE DWG. NOL/ERL/300/C/XRL/ENS/M51/221

834000 E

818000 N



TITLE
**NOL / ERL -300
ENVIRONMENTAL IMPACT ASSESSMENT
HABITAT MAP**

SCALE
1 : 5000 (A3) NOL/ERL/300/C/XRL/ENS/M51/220

FIGURE NO.
REV. B

MTR

EXPRESS RAIL LINK

ENSR AECOM

ORIGINATOR

CAAD REF. NOL_ERL_300_C_XRL_ENS_M51_220B.dgn

DRAWN	XCF
DESIGNED	TWF
CHECKED	KCC
APPROVED	PL
DATE	10/OCT./2008

DO NOT SCALE DRAWINGS. ALL DIMENSIONS SHALL BE TAKEN FROM THE DRAWING. THIS DRAWING IS THE PROPERTY OF MTR CORPORATION LIMITED. ALL RIGHTS RESERVED. IN THE EVENT OF ANY DISPUTE, THE DRAWING SHALL PREVAIL OVER ANY PHOTOGRAPH OR VIDEO RECORDING. THIS DRAWING IS NOT TO BE REPRODUCED OR TRANSMITTED IN ANY FORM OR BY ANY MEANS, ELECTRONIC OR MECHANICAL, WITHOUT THE WRITTEN PERMISSION OF MTR CORPORATION LIMITED.

REV	DESCRIPTION	BY	DATE	APPROVED	REV	DESCRIPTION	BY	DATE	APPROVED