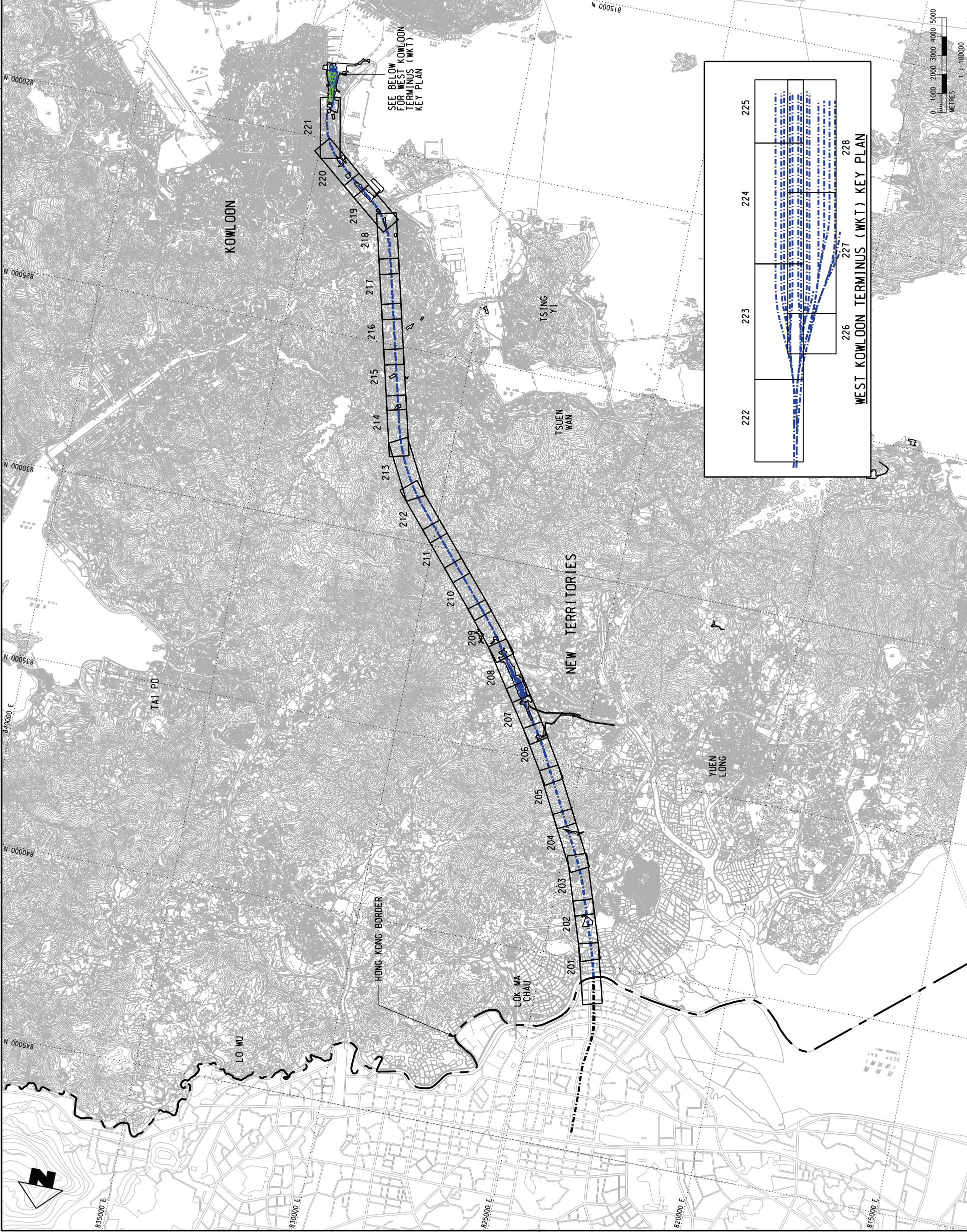


- NOTES:**
1. THE GEOLOGICAL SECTIONS DRAWN ARE BASED UPON LIMITED BOREHOLE DATA.
  2. LOCATIONS OF THE FAULT SHOWN ON THE GEOLOGICAL SECTION ARE INDICATED BY OR INFERRED FROM EXISTING GEOLOGICAL PUBLICATIONS. THEIR WIDTH AND NATURE SHOULD BE VERIFIED BY THE PROJECT SPECIFIC BOREHOLES.
  3. UNIDENTIFIED FAULTS AND DYKES MAY BE PRESENT CLOSE TO, PARALLEL OR INTERSECT THE TUNNEL ALIGNMENT.
  4. SOIL GENERALLY COMPRISES SUPERFICIAL DEPOSITS AND COMPLETELY TO HIGHLY DECOMPOSED ROCK WITH OCCASIONAL BOULDERS / CONCRETIONS.
  5. MIXED GROUND COMPRISES BOTH BEDROCK AND SOIL IN VARYING PROPORTIONS. IT GENERALLY CONSISTS OF SOIL CONTAINING BETWEEN 25% AND 75% OF INTACT ROCK MATERIAL IN THE FORM OF COBBLES AND BOULDERS.
  6. ANTICIPATED Q VALUES ARE SHOWN FOR THE DRILL & BLAST (D&B) TUNNEL SECTION. THESE VALUES ARE INDICATIVE OF THE ANTICIPATED CONDITION AND HAVE BEEN INFERRED FROM ROCK COVER, ADJACENT GEOLOGICAL CONDITION AND LOCAL EXPERIENCE. WITH SUPPORT FROM A FEW BOREHOLES CLOSE TO THE TUNNEL ALIGNMENT AND MAPPING RECORDS OF EXISTING TUNNELS. GIVEN THE LACK OF GROUND INVESTIGATION DATA, THESE VALUES SHOULD NOT BE CONSIDERED AS AN ACCURATE REPRESENTATION OF THE GROUND CONDITION TO BE ENCOUNTERED.
- LEGEND:**
- PROPOSED SELECTED ALIGNMENT
  - PERMANENT ABOVEGROUND FACILITIES
  - UNDERGROUND FACILITIES
  - CONSTRUCTION WORKS SITES BOUNDARY
  - XRL PROJECT SPECIFIC BOREHOLE (PARTLY COMPLETED)
- SOIL (ABBREVIATIONS IN LAYOUT PLAN):**
- FILL
  - UNDIVIDED MARINE DEPOSITS
  - MARINE SAND
  - ALLUVIUM / TERRACED ALLUVIUM
  - DEBRIS FLOW DEPOSITS
- SOIL (ABBREVIATIONS IN CROSS-SECTION):**
- FILL
  - MARINE DEPOSITS
  - ALLUVIUM
  - COLLUVIUM
  - COMPLETELY / HIGHLY DECOMPOSED ROCK
  - MIXED GROUND
  - COMPLETE DECOMPOSED GRANITE
- ROCK:**
- KOWLOON GRANITE (MEDIUM - GRAINED GRANITE)
  - SHATAI GRANITE (COARSE - GRAINED GRANITE)
  - NEEDLE HILL GRANITE (FINE - GRAINED GRANITE)
  - TAI PO GRANODIORITE
  - YIM TIM TEAL FORMATION (COARSE ASH CRYSTAL TUFF)
  - SHING MUN FORMATION (COARSE ASH CRYSTAL TUFF & TUFF BRECCIA)
  - TAI MO SHAN FORMATION (COARSE ASH CRYSTAL TUFF)
  - LOK MA CHAU FORMATION (META-SANDSTONE & META-SILTSTONE)
  - YUEN LONG FORMATION (MARBLE)
  - BASALT DYKE
  - APLITE DYKE
  - QUARTZPHYRIC RHYOLITE/FELDSPHAPHYRIC RHYOLITE
  - METAMORPHOSE
- STRUCTURAL FEATURE:**
- FAULT FROM 1:100,000 GEOLOGY MAP
  - THRUST FROM 1:100,000 GEOLOGY MAP
  - FAULT FROM 1:20,000 GEOLOGY MAP
  - PHOTOLINEAMENT FROM 1:20,000 GEOLOGY MAP
  - FAULT FROM 1:5,000 GEOLOGY MAP
  - FAULT FROM GASP REPORT
  - PHOTOLINEAMENT FROM GASP REPORT
  - FAULT FROM SHAW'S PAPER
  - ADDITIONAL PHOTOLINEAMENT IDENTIFIED
- CONSTRUCTION METHODS:**
- C&C - CUT & COVER
  - TBM - TUNNEL BORING MACHINE TUNNEL
  - D&B - DRILL & BLAST TUNNEL



<p><b>PLT DRY:</b> Rvs\stns\mtr\pl\01\DRIVER\MW\MS3\COLOR.PLT  <b>MODEL NAME:</b> Default  <b>PRINTED BY:</b> DKM  <b>DATE:</b> 2009-1-13 17:44  <b>FILE NAME:</b> p:\projects\600461742\DRAWING\00\K\ENR\M\NOL_300_C_XRL_ENS_M53_200C.dgn</p>		<p>REVISIONS</p> <table border="1"> <thead> <tr> <th>REV</th> <th>DESCRIPTION</th> <th>BY</th> <th>DATE</th> <th>APPROVED</th> <th>REV</th> </tr> </thead> <tbody> <tr> <td> </td> <td> </td> <td> </td> <td> </td> <td> </td> <td> </td> </tr> </tbody> </table>	REV	DESCRIPTION	BY	DATE	APPROVED	REV						
REV	DESCRIPTION	BY	DATE	APPROVED	REV									
<p><b>SCALE:</b> 1:100000 (A3)   NOL/ERL/300/C/XRL/ENS/M53/200</p>		<p>FIGURE NO. REV. C</p>												
<p><b>TITLE:</b> NOL / ERL -300 ENVIRONMENTAL IMPACT ASSESSMENT GEOLOGICAL PROFILE</p>		<p><b>ORIGINATOR:</b> ENSR   AECOM</p>												
<p><b>DESIGNED:</b> YJP</p> <p><b>CHECKED:</b> KCC</p> <p><b>APPROVED:</b> PL</p> <p><b>DATE:</b> 07/FEB./2009</p> <p><small>DO NOT SCALE DRAWINGS. ALL DIMENSIONS SHALL BE TO THE DIMENSIONS SHOWN. THIS DRAWING IS THE PROPERTY OF MTR CORPORATION LIMITED. ALL RIGHTS RESERVED. NO PART OF THIS DRAWING IS TO BE REPRODUCED OR TRANSMITTED IN ANY FORM OR BY ANY MEANS, ELECTRONIC OR MECHANICAL, WITHOUT THE WRITTEN PERMISSION OF MTR CORPORATION LIMITED.</small></p>		<p><b>DESIGNATION:</b> EXPRESS RAIL LINK</p>												
<p><b>CLIENT:</b> MTR</p>		<p><b>PROJECT:</b> NOL_300_C_XRL_ENS_M53_200C.dgn</p>												