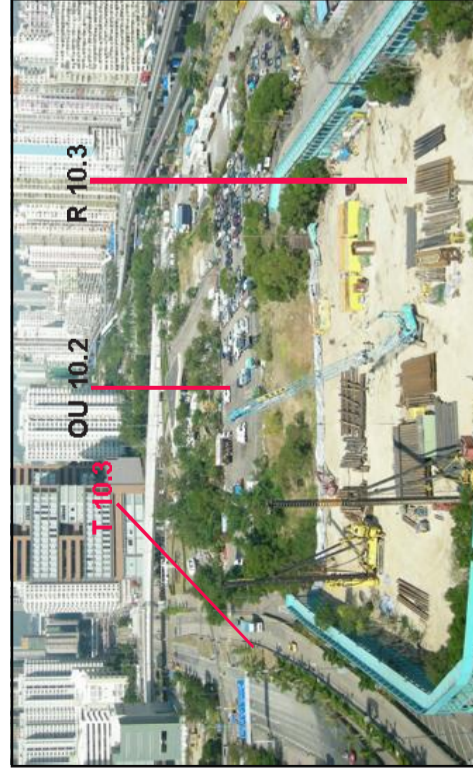


GIC 10.5 Tsim Sha Tsui Fire Station
GIC 10.9 Schools at Canton Road: Lai Chaak Middle School and Canton Road Government School
C 10.2 Commercial building along Canton Road
C 10.3 China Hong Kong City, Ocean City



GIC 10.8 Schools on Cherry Street: CCC Ming Kei College and Sharon Lutheran School



T 10.3 Lai Cheung Road, Ngo Cheung Road and Yan Cheung Road
OU 10.2 Open carpark at Yan Cheung Road
R 10.3 Planned Residential Development at Hoi Wang Road



GIC 10.6 CAS Headquarter and FSD West Kowloon Rescue Training Centre



T 10.1 Hoi Wang Road and Hoi Ting Road



T 10.4 West Kowloon Corridor



GIC 10.7 Western Harbour Crossing Administration Block



T 10.2 Cherry Street



T 10.5 Waterloo Road

REV	DESCRIPTION	BY	DATE	APPROVED	REV	DESCRIPTION	BY	DATE	APPROVED

MTR
EXPRESS RAIL LINK
ENSR | **AECOM**

ORIGINATOR
 CADD REF.
 DATE: 19/AUG./2008

DO NOT SCALE DRAWINGS. ALL DIMENSIONS SHALL BE TO THE DIMENSIONS SHOWN ON THE DRAWING. THE CONTRACTOR SHALL BE RESPONSIBLE FOR VERIFYING THE ACCURACY OF ALL DIMENSIONS SHOWN ON THE DRAWING PRIOR TO CONSTRUCTION.

SCALE: NTS
 TITLE: NOL / ERL -300 ENVIRONMENTAL IMPACT ASSESSMENT BASELINE KEY VSRs PHOTOS AT WEST KOWLOON
 FIGURE NO.: NOL/ERL/300/C/XR/ENR/MS/54/367
 REV: C