

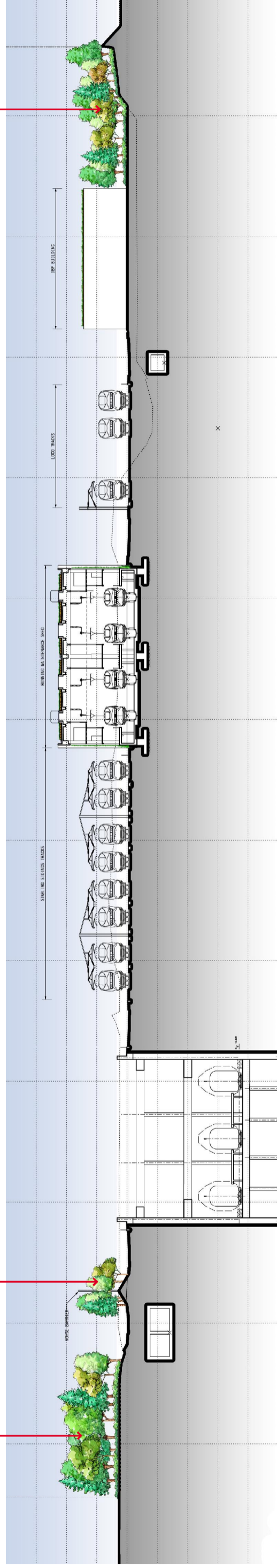
- LEGEND:**
- GRASS / SHRUBS
  - EXISTING TREES
  - PROPOSED TREES
  - PROPOSED TREE GROUP
  - GREEN ROOF
  - KAM TIN STREAM
  - NOISE BARRIER
  - PERMANENT SITE BOUNDARY
  - FENCELINE (WITH CLIMBER PLANTING)

**KEY PLAN**

**OM1, OM3**

**OM3**

**OM1, OM3**



**NOTE:**

This drawing does not indicate precise no. and locations of retained trees and compensatory trees. The precise no. of trees to be retained, transplanted, fell and compensated shall be determined and agreed separately with government during the Tree Felling Application process under ETWB TC 3/2006.

Landscaping features and form of structures shown in drawing are indicative only.

REV	DESCRIPTION	BY	DATE	APPROVED	REV	DESCRIPTION	BY	DATE	APPROVED
<b>EXPRESS RAIL LINK</b> 									
<b>ORIGINATOR</b>									
DATE: MAY / 2009									
<small>DO NOT SCALE DRAWINGS. ALL DIMENSIONS SHALL BE AS SHOWN. THIS DRAWING IS THE PROPERTY OF MTR CORPORATION LIMITED. ALL RIGHTS RESERVED. NO PART OF THIS DRAWING IS TO BE REPRODUCED OR TRANSMITTED IN ANY FORM OR BY ANY MEANS, ELECTRONIC OR MECHANICAL, INCLUDING PHOTOCOPYING, RECORDING, OR BY ANY INFORMATION STORAGE AND RETRIEVAL SYSTEM, WITHOUT THE WRITTEN PERMISSION OF MTR CORPORATION LIMITED.</small>									
<b>TITLE</b> NOL / ERL -300 ENVIRONMENTAL IMPACT ASSESSMENT Landscape Section at Shek Kong Stablings Sidings (SSS) and Emergency Rescue Station (ERS)					<b>SCALE</b> NTS				
<b>FIGURE NO.</b> NOL/ERL/300/C/XR/ENS/M54/613					<b>REV.</b> C				