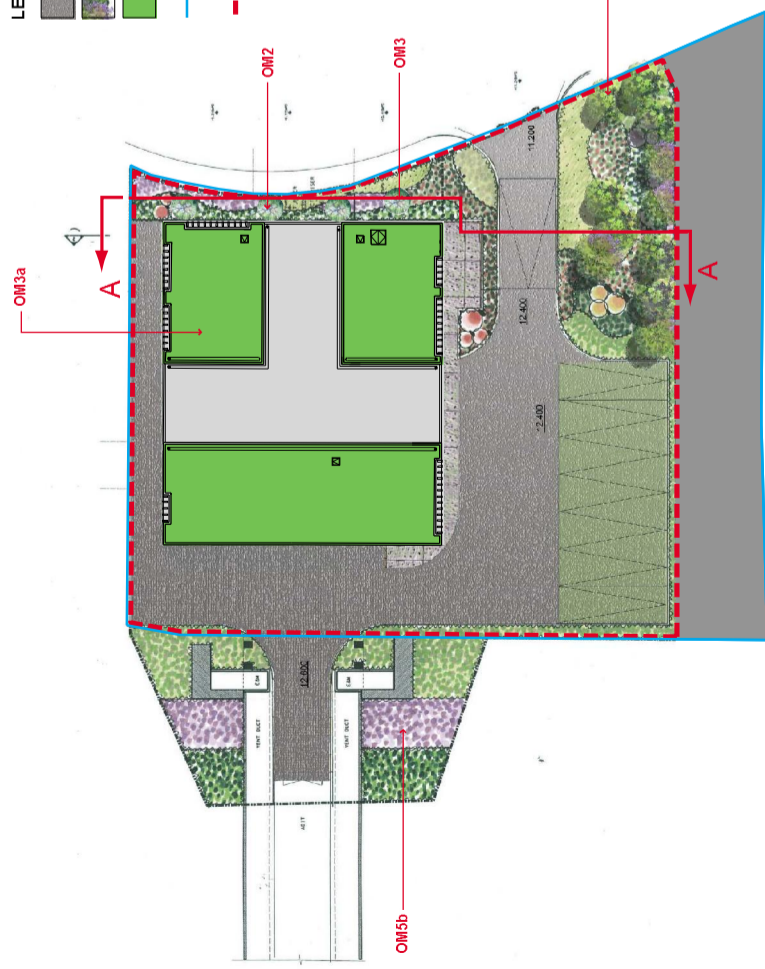


- LEGEND:**
- ACCESS EVA (ASPHALT)
 - BUFFER PLANTING
 - ROOF GREENING
 - PERMANENT SITE BOUNDARY
 - FENCELINE



KEY PLAN

OM3

AMENITY TREES AND SHRUB PLANTING TO SOFTEN THE EDGE OF BOUNDARY AND PROVIDE AESTHETIC VALUE OF THE ENTRANCE

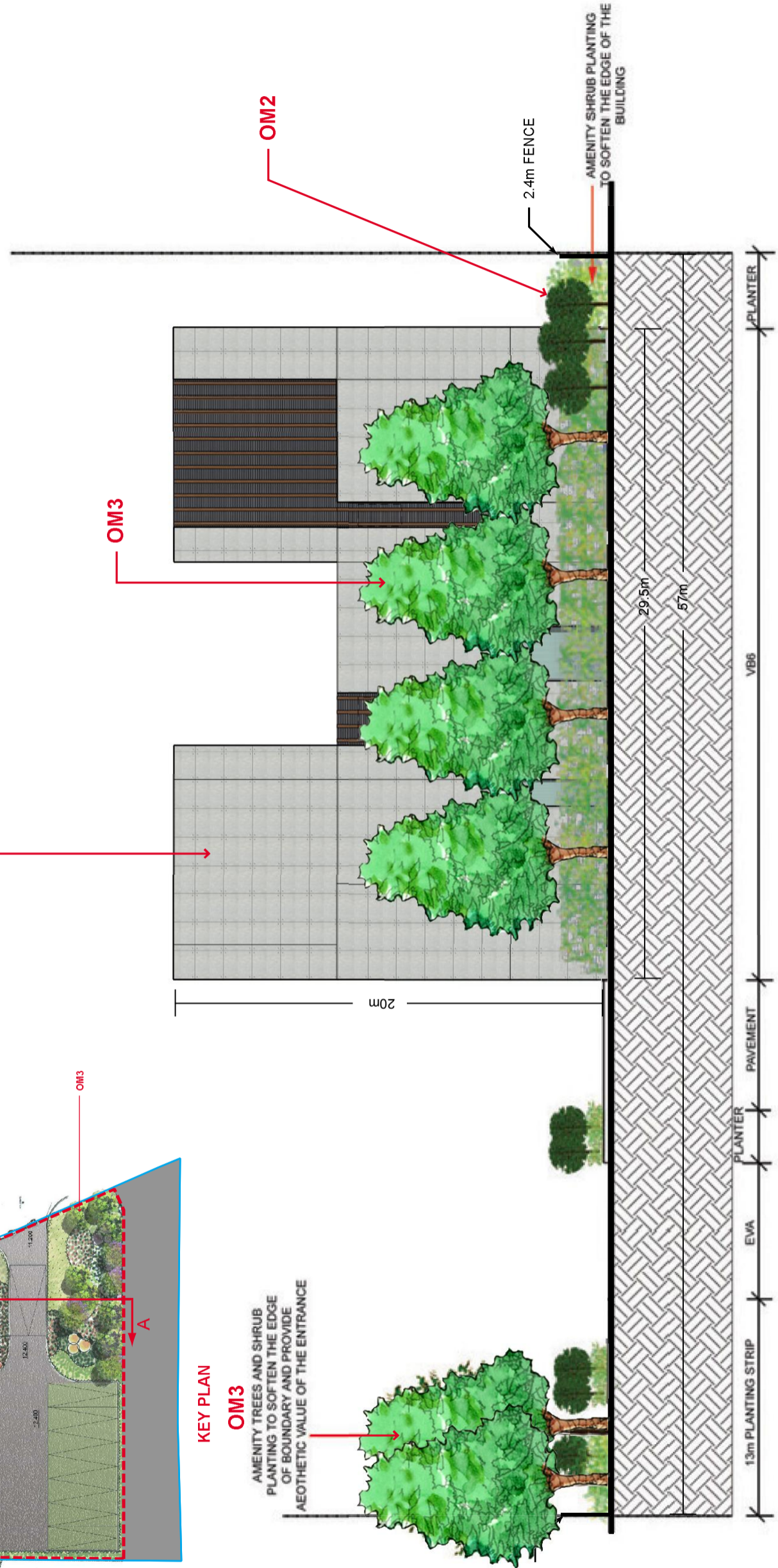
OM2

2.4m FENCE

AMENITY SHRUB PLANTING TO SOFTEN THE EDGE OF THE BUILDING

OM6

OM3



SECTION A - A

NOTE:
 This drawing does not indicate precise no. and locations of retained trees and compensatory trees. The precise no. of trees to be retained, transplanted, fell and compensated shall be determined and agreed separately with government during the Tree Felling Application process under ETWB TC 3/2006.
 Landscaping features and form of structures shown in drawing are indicative only.

REV	DESCRIPTION	BY	DATE	APPROVED	REV	DESCRIPTION	BY	DATE	APPROVED

		EXPRESS RAIL LINK ENSR AECOM	ORIGINATOR
TITLE NOL / ERL -300 ENVIRONMENTAL IMPACT ASSESSMENT Landscape Section at Kwai Chung Ventilation Building (KCV)		SCALE NTS	FIGURE NO. NOL/ERL/300/C/XR/ENS/M54/623
REV		SCALE NTS	FIGURE NO. NOL/ERL/300/C/XR/ENS/M54/623
DESCRIPTION		SCALE NTS	FIGURE NO. NOL/ERL/300/C/XR/ENS/M54/623