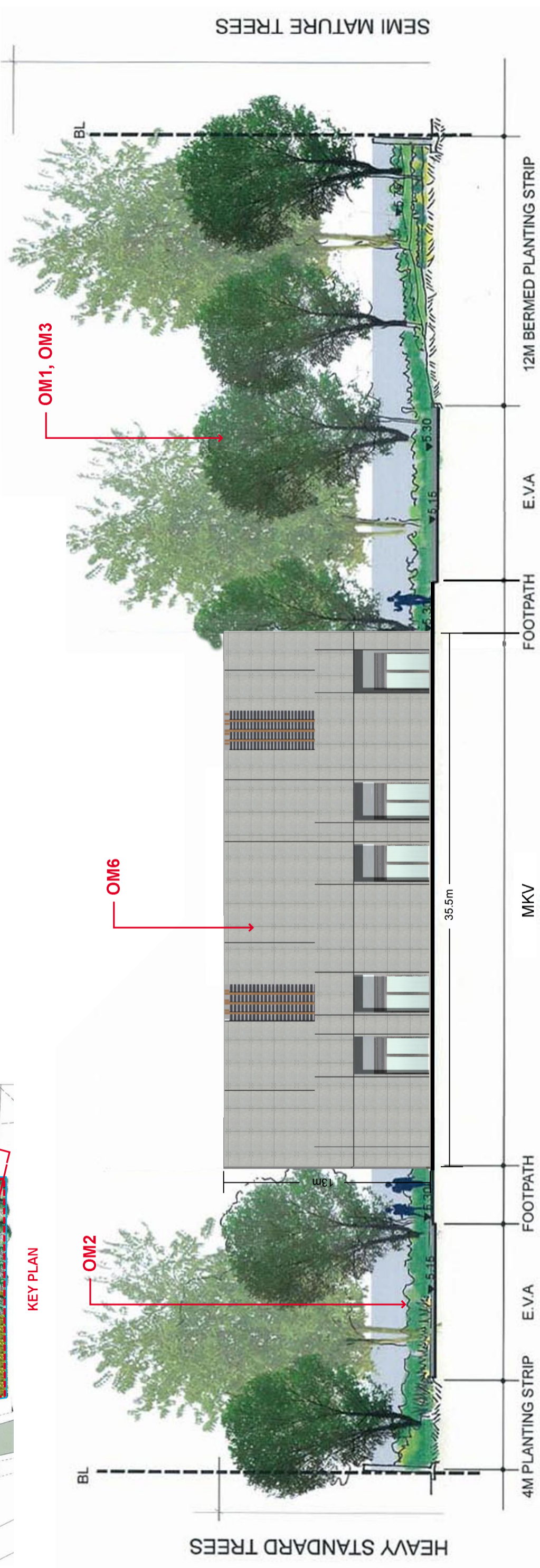


**KEY PLAN**



**NOTE:**  
 This drawing does not indicate precise no. and locations of retained trees and compensatory trees. The precise no. of trees to be retained, transplanted, fell and compensated shall be determined and agreed separately with government during the Tree Felling Application process under ETWB TC 3/2006. Landscaping features and form of structures shown in drawing are indicative only.



REV	DESCRIPTION	BY	DATE	APPROVED	REV	DESCRIPTION	BY	DATE	APPROVED

	<b>EXPRESS RAIL LINK</b> <b>ENSR AECOM</b>	<b>ORIGINATOR</b>
<b>SCALE</b> NTS	<b>TITLE</b> NOL / ERL -300 ENVIRONMENTAL IMPACT ASSESSMENT Landscape Section at Mong Kok West Ventilation Building (MKV)	<b>FIGURE NO.</b> NOL/ERL/300/C/XR/ENS/M54/629
<b>SCALE</b> NTS	<b>TITLE</b> NOL / ERL -300 ENVIRONMENTAL IMPACT ASSESSMENT Landscape Section at Mong Kok West Ventilation Building (MKV)	<b>FIGURE NO.</b> NOL/ERL/300/C/XR/ENS/M54/629
<b>REV.</b> C	<b>SCALE</b> NTS	<b>TITLE</b> NOL / ERL -300 ENVIRONMENTAL IMPACT ASSESSMENT Landscape Section at Mong Kok West Ventilation Building (MKV)