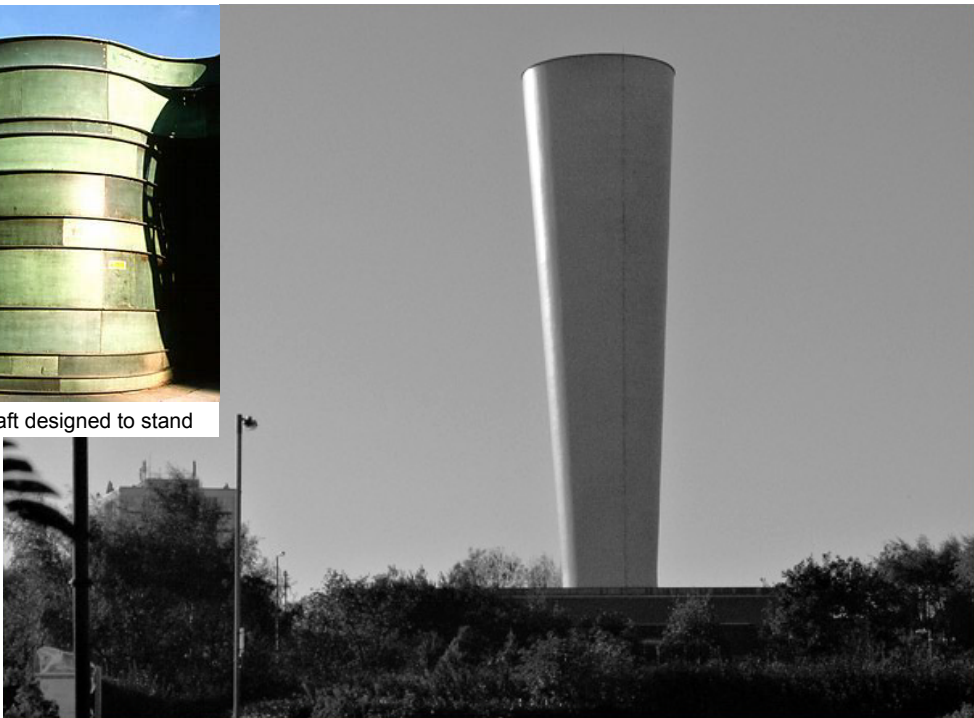


Example of Ventilation Shaft (International)



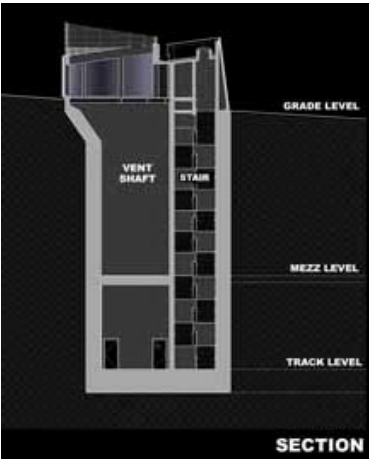
Jubilee Line, London, UK - Ventilation Shaft designed to stand out as architectural features



The Tyne Tunnel, UK - Ventilation Shaft designed to stand out as architectural features



Seattle, US - Ventilation shaft integrated with existing low-rise buildings



Jubilee Line, London, UK - Freestanding Ventilation Shaft designed to match with adjacent footpath






America's Cup Building 'Veles e Vents' (Sales and Winds), The vent building designed as terraces. Wooden roofs and the glass facings make this a superb vantage point over the city. Underground car-park for 800 vehicles built to serve as infrastructures and guarantee accessibility to the Marina Real Juan Carlos I. The car park is located under the terrace.



Iconic building at night



Yokohama, Japan - Ventilation Shaft designed as lighting features

												<div><div>DRAWN DESIGNED CHECKED APPROVED DATE</div><div>- - - - MAY / 2009</div></div> <div>DO NOT SCALE DRAWINGS. ALL DIMENSIONS SHALL BE VERIFIED ON SITE. © MTR CORPORATION LIMITED 2008. COPYRIGHT IN RESPECT OF THIS DRAWING / DOCUMENT IS OWNED BY THE MTR CORPORATION LIMITED OF HONG KONG. NO REPRODUCTION OF THE DRAWING / DOCUMENT OR ANY PART BY WHATEVER MEANS IS PERMITTED WITHOUT THE PRIOR WRITTEN CONSENT OF THE MTR CORPORATION LIMITED.</div>				<div><div></div><div>EXPRESS RAIL LINK</div><div>ORIGINATOR</div><div>   </div></div>				TITLE NOL / ERL-300 ENVIRONMENTAL IMPACT ASSESSMENT Possible Solution of Integration in Vent Shafts with adjacent context (International)			
REV	DESCRIPTION			BY	DATE	APPROVED	REV	DESCRIPTION			BY	DATE	APPROVED	CADD REF.	SCALE NTS	FIGURE NO. NOL/ERL/300/C/XRL/ENS/M54/639	REV. C						