

**GEOLOGICAL LINE FEATURE**

- FAULT, INFERRED
- FAULT, OBSERVED
- - - MINERAL VEIN
- - - PHOTOLINEAMENT

**METAMORPHOSED GEOLOGY**

- MEGACRYSTIC

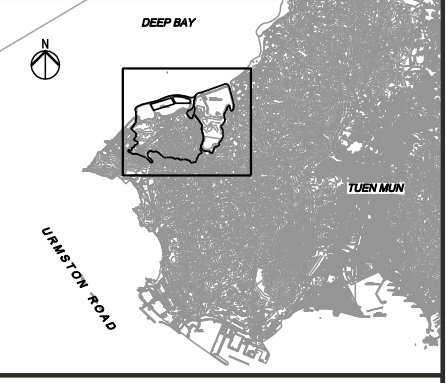
**SUPERFICIAL GEOLOGY**

- ▨ FILL
- ms MARINE SAND
- Qa ALLUVIUM
- Qb BEACH DEPOSITS
- Qd DEBRIS FLOW DEPOSITS
- QHH UNDIVIDED, MAINLY MARINE MUD
- Qpa TERRACED ALLUVIUM
- Qpd DEBRIS FLOW DEPOSITS
- Qrb RAISED BEACH DEPOSITS

**SOLID GEOLOGY**

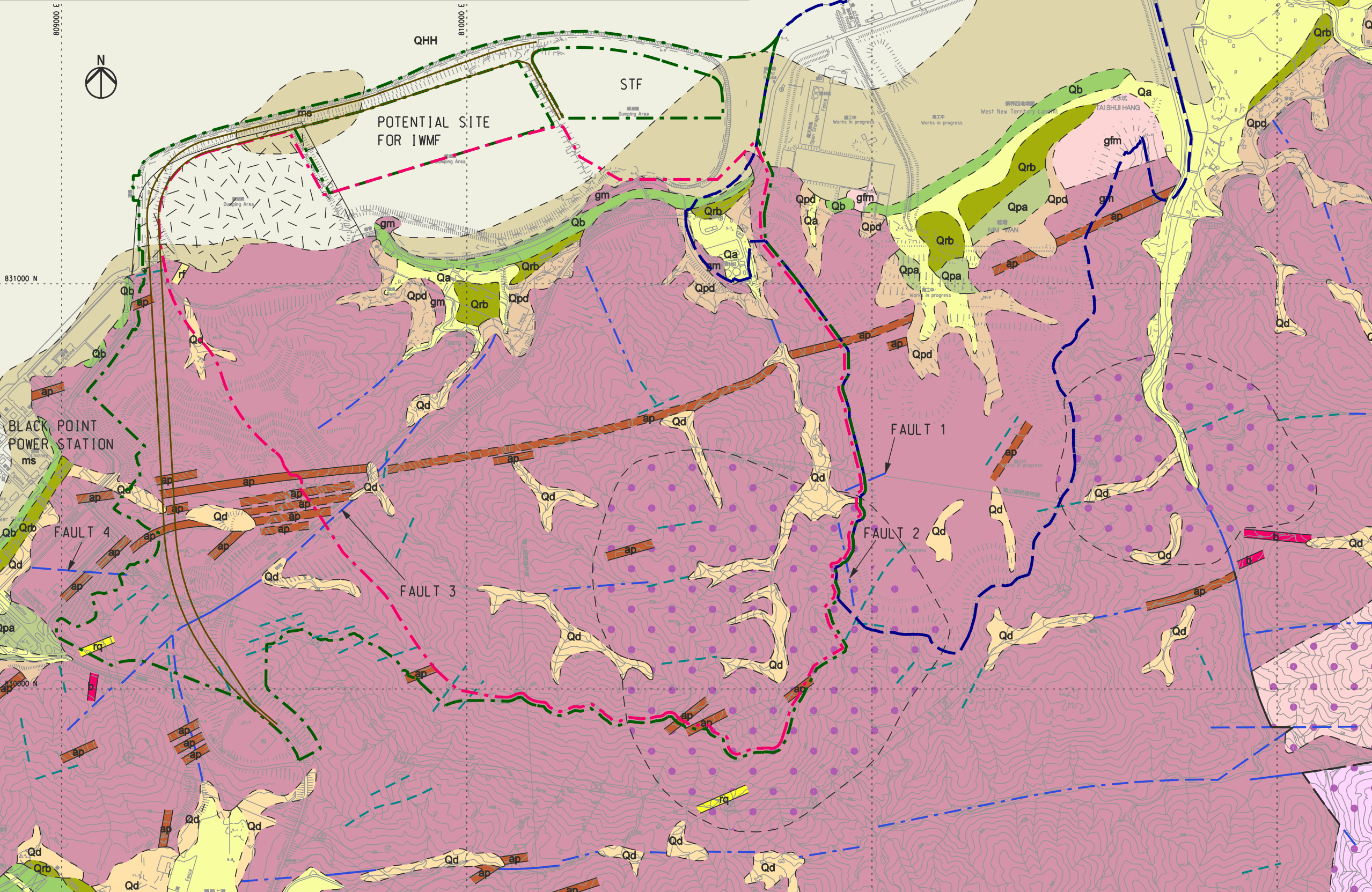
- ap APLITE
- b BASALT
- gf FINE-GRAINED GRANITE
- gfm FINE-TO MEDIUM-GRAINED GRANITE
- gm MEDIUM-GRAINED GRANITE
- l LAMPROPHYRE
- rf FELDSPARPHYRIC RHYOLITE
- rq QUARTZPHYRIC RHYOLITE

NOTE: THIS MAP IS REPRODUCED BASED ON DIGITAL GEOLOGY MAP SHEET NO.5 WITH THE PERMISSION OF GEO/PLANNING DIVISION.



**LEGEND**

- BOUNDARY OF EXISTING WENT LANDFILL
- - - WASTE BOUNDARY OF WENT LANDFILL EXTENSION
- - - PROJECT BOUNDARY OF WENT LANDFILL EXTENSION
- NIM WAN ROAD DIVERSION



Rev	Description	By	Date
-	FIRST ISSUE	PM	01/08

Consultant  
**ARUP** 奧雅納工程顧問  
 Ove Arup & Partners Hong Kong Limited

Project title  
**Agreement No. CE 43/2006 (EP)  
 West New Territories (WENT)  
 Landfill Extensions  
 Feasibility Study**

Drawing title  
**GEOLOGICAL MAP**

Drawing no. **FIGURE 7.1**

Drawn	Date	Checked	Approved
RY	01/08	PM	FW
Scale	1 : 10000 ON A3		Status
			PRELIMINARY

COPYRIGHT RESERVED

環境保護署  
 廢物設施組  
 Environmental Protection Department  
 Waste Facilities Group

Printed by : \$USERS\$  
 Filename : J:\24929\Arup\Civil\Sketch\EIA-Report\24929\_EIA-FIG7\_1.dgn  
 2/6/2009