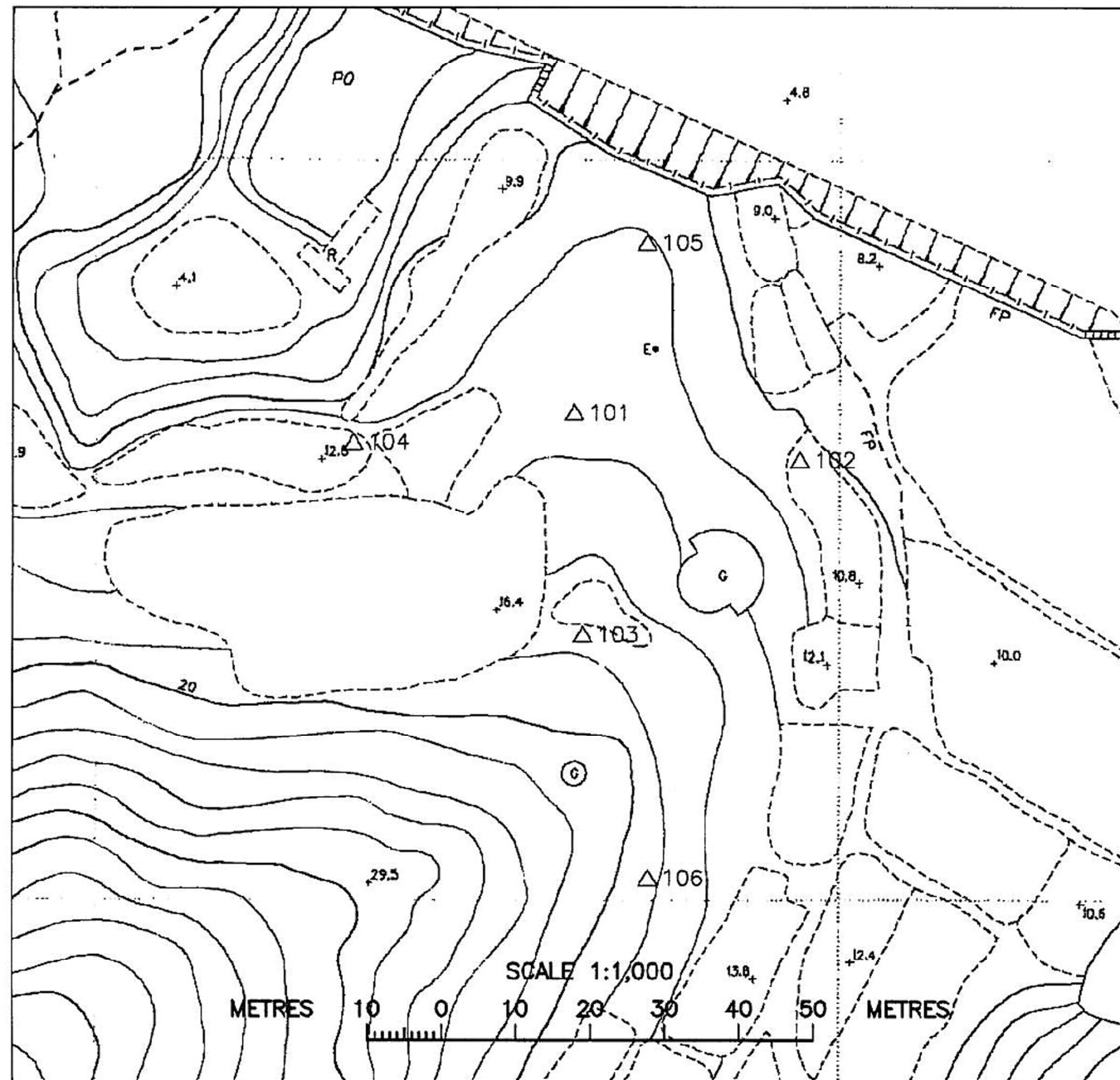
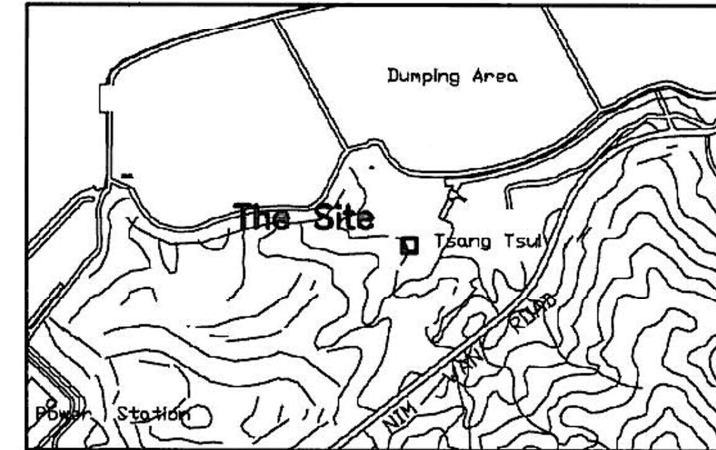


# Archaeology Investigation at Tsang Tsui, Tuen Mun

## Plan of Horizontal Controls



Location Plan (Scale 1:20,000)



Control Points (\*Surveyed by GPS.)

Pt.	N	E	Level(mPD)
101	830965.523	809864.360	13.636
102	830959.137	809894.701	10.498
103	830935.543	809865.498	17.610
104	830961.626	809834.646	12.239
105	830988.500	809874.167	11.924
106	830902.702	809874.244	17.922

**Legend :**

△101 Control Point

A Levels of control points added on 17 Mar 2008.	
Plan No. : HC-11691/01A	Survey Date : 10 Mar 2008
Plan prepared by :	
<b>HENRY CHAN SURVEYORS LTD.</b> Authorized Land & Hydrographic Surveyors	
G/F, 2 Yan Wo Lane, Tai Po, N.T. Email : hcsurvey@netvigator.com	Tel : 2638-1313 Fax : 2638-1328
<b>Henry H K Chan</b> BSc MRICS FHKIS RPS(LSD)	

Rev	Description	By	Date
-		Yuk	01/09

Consultant  
**ARUP** 奧雅納工程顧問  
Ove Arup & Partners Hong Kong Limited

Project title  
Agreement No. CE 43/2006 (EP)  
West New Territories (WENT)  
Landfill Extensions  
Feasibility Study

Drawing title  
  
Control Points for Archaeological  
Survey within Study Area

Drawing no. Figure 9.7 Rev. -

Drawn Yuk	Date 01/09	Checked FC	Approved FC
-----------	------------	------------	-------------

Scale N.T.C.	Status <b>PRELIMINARY</b>
--------------	---------------------------

**Copyright Reserved**

環境保護署  
Environmental Protection Department  
Waste Facilities Business Unit