



Grassland



Plantation



Stream



Rocky Shore at Sha Lo Wan



Tall Shrubland



Active Dry Agriculture



Sandy Shore



Rocky Shore on Airport Island



Young Woodland



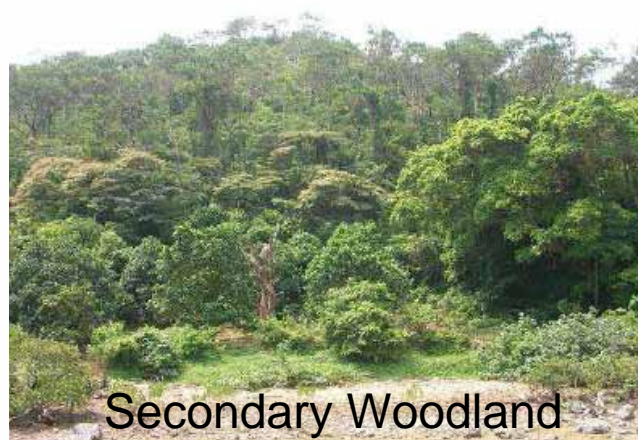
Developed Area



Mudflat



Artificial Seawall on Airport Island



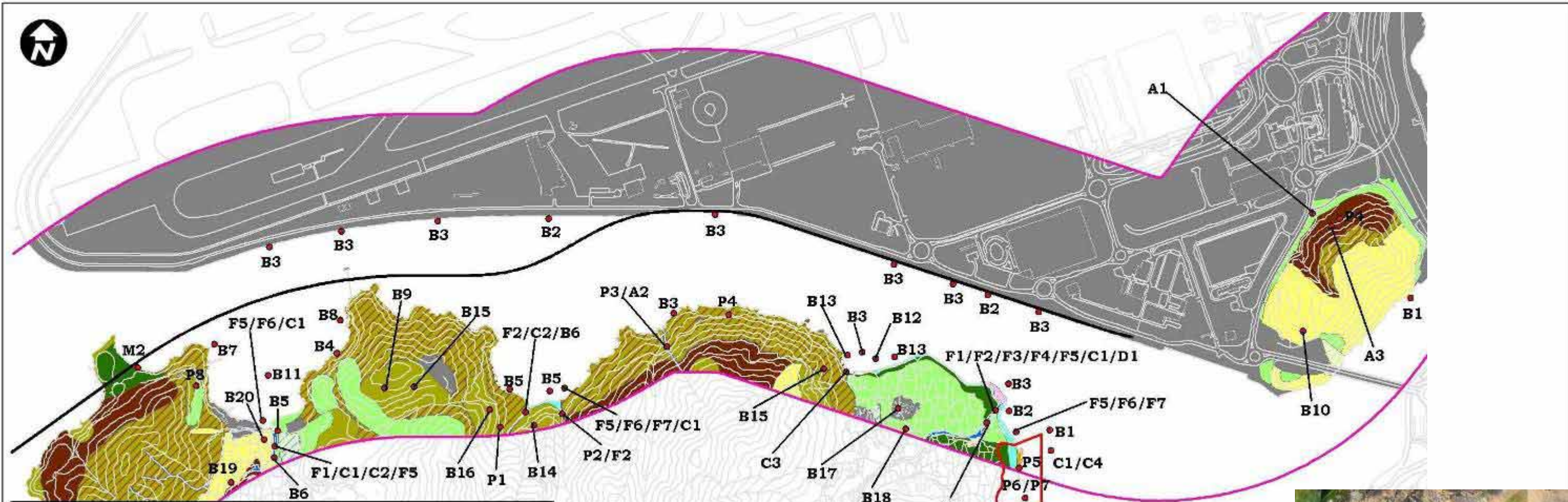
Secondary Woodland



Mangrove



Marine Waters



Herpetofauna	Aquatic Invertebrates
A1 <i>Hoplobatrachus chinensis</i>	C1 <i>Metapenaeus ensi</i>
A2 <i>Paa exilispinosa</i>	C2 <i>Chiromantes sereni</i>
A3 <i>Philautus romeri</i>	C3 <i>Somanniathelphusa zanklon</i>
	C4 <i>Tachypleus tridentatus</i>
Birds	Fishes
B1 <i>Ardea cinera</i>	F1 <i>Parazacco spiturus</i>
B2 <i>Egretta alba</i>	F2 <i>Oryzias curvinotus</i>
B3 <i>Egretta garzetta</i>	F3 <i>Acrossocheilus beijiangensis</i>
B4 <i>Egretta sacra</i>	F4 <i>Kuhlia marginata</i>
B5 <i>Butorides striatus</i>	F5 <i>Favonigobius rechei</i>
B6 <i>Nycticorax nycticorax</i>	F6 <i>Scartelaos histophorus</i>
B7 <i>Milvus migrans</i>	F7 <i>Takifugu niphobles</i>
B8 <i>Accipiter trivirgatus</i>	
B9 <i>Buteo buteo</i>	
B10 <i>Falco tinnunculus</i>	
B11 <i>Charadrius dubius</i>	
B12 <i>Numenius phaeopus</i>	
B13 <i>Heteroscelus brevipes</i>	
B14 <i>Otus bakkamoena</i>	
B15 <i>Chalcophaps indica</i>	
B16 <i>Garrulax canorus</i>	
B17 <i>Phylloscopus reguloides</i>	
B18 <i>Carpodacus erythrinus</i>	
B19 <i>Sturnus sinensis</i>	
B20 <i>Oriolus chinensis</i>	
Butterfly	Mammals
D1 <i>Lamproptera curtus</i>	M1 <i>Muntiacus muntjac</i>
	M2 <i>Sus scrofa</i>
	Plant
	P1 <i>Pavetta hongkongensis</i>
	P2 <i>Drosera indica</i>
	P3 <i>Eulophia graminea</i>
	P4 <i>Aquilaria sinensis</i>
	P5 <i>Thespesia populnea</i>
	P6 <i>Zostera japonica</i>
	P7 <i>Halophila minor</i>
	P8 <i>Dodonaea viscosa</i>

Proposed Alignment	Plantation
Survey Area	Mudflat
San Tau SSSI	Seasonally Wet Grassland
Active Dry Agriculture	Secondary Woodland
Associated Mangrove	Shrubland
Developed Area	Soft Shore
Grassland	Stream
Grassland/ Shrubland	Tall Shrubland
Hard Shore	Young Woodland
Mangrove	

