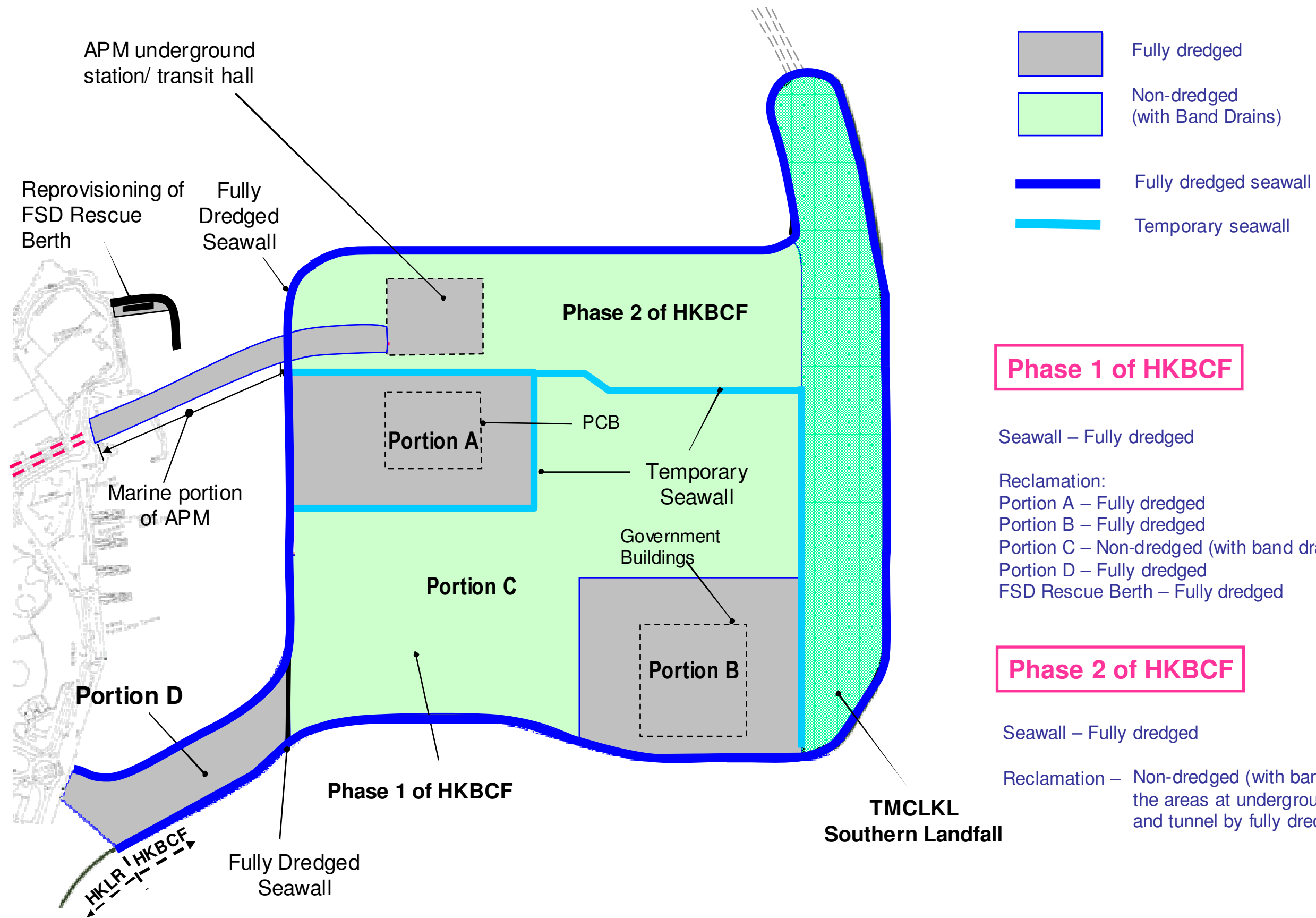


APPENDIX E1

---

**Typical Arrangement of  
HKBCF Sequence A**



**Phase 1 of HKBCF**

Seawall – Fully dredged

Reclamation:

- Portion A – Fully dredged
- Portion B – Fully dredged
- Portion C – Non-dredged (with band drains)
- Portion D – Fully dredged
- FSD Rescue Berth – Fully dredged

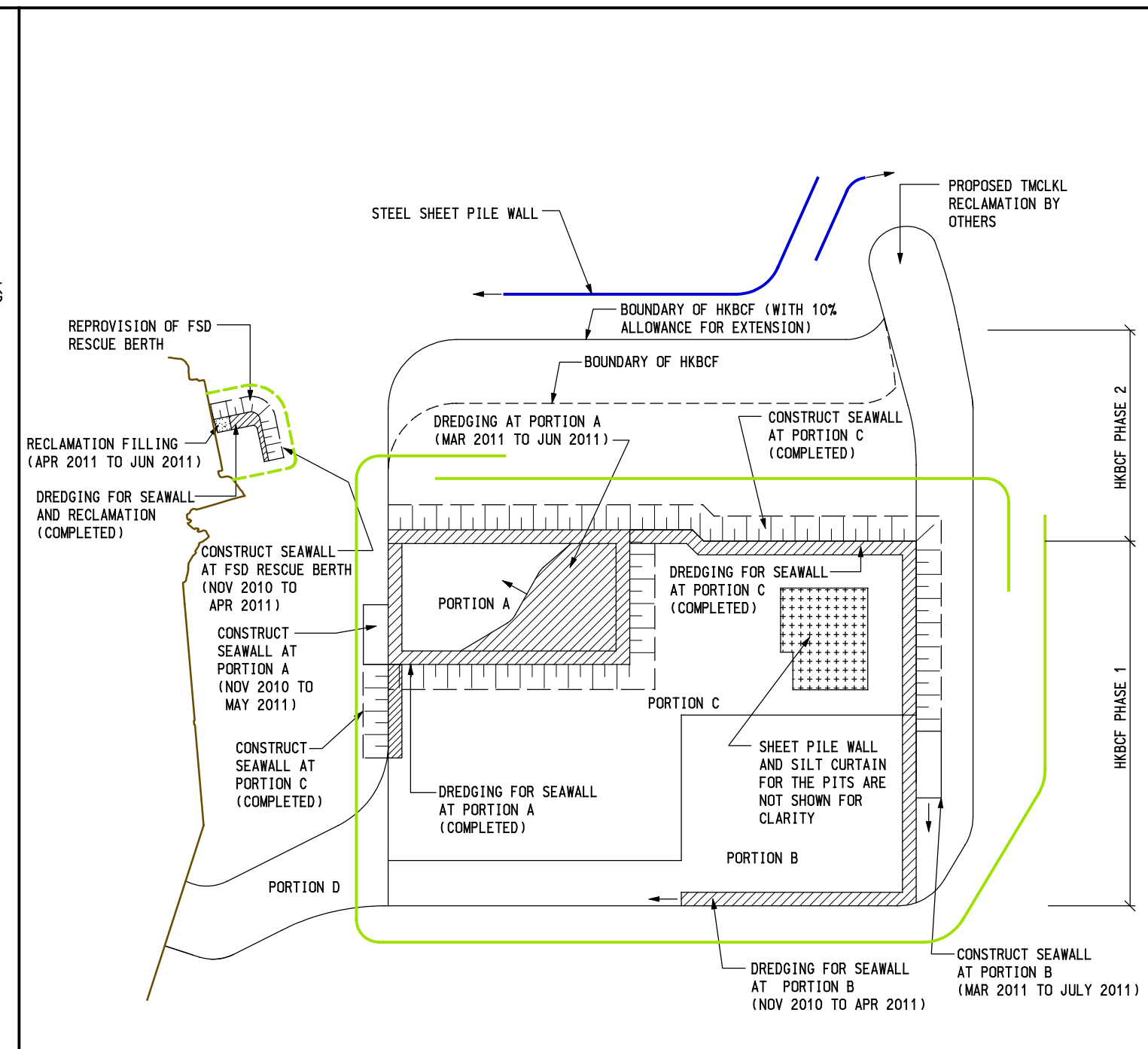
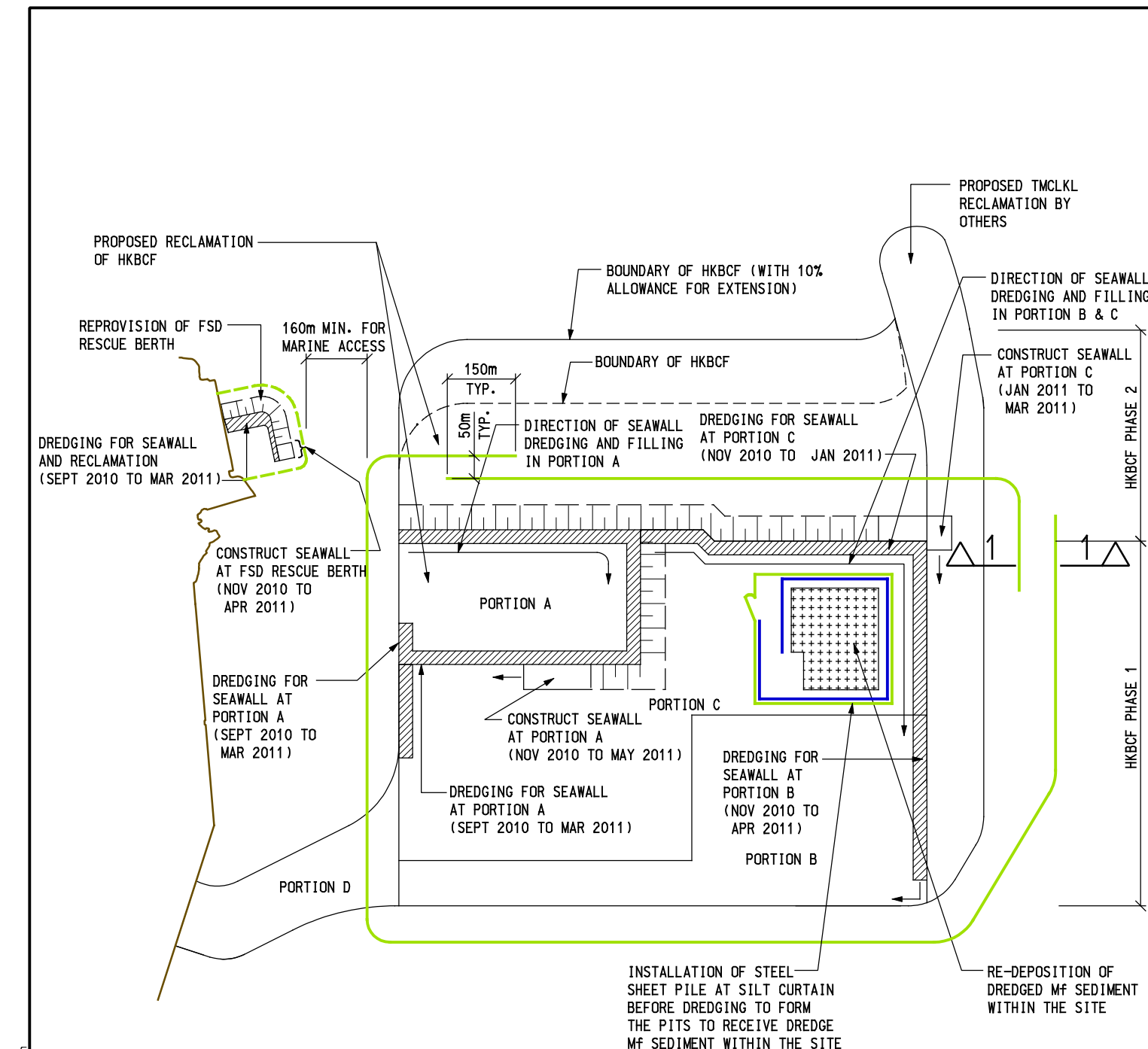
**Phase 2 of HKBCF**

Seawall – Fully dredged

Reclamation – Non-dredged (with band drains) except the areas at underground APM station and tunnel by fully dredged.

Activities	Year 2010					Year 2011					Year 2012					Year 2013					Year 2014					Year 2015					Year 2016																																													
	A	S	O	N	D	J	F	M	A	M	J	J	A	S	O	N	D	J	F	M	A	M	J	J	A	S	O	N	D	J	F	M	A	M	J	J	A	S	O	N	D	J	F	M	A	M	J	J	A	S	O	N	D	J	F	M	A	M	J	J	A	S	O	N	D	J	F	M	A	M	J	J	A	S	O	N
<b>Hong Kong Boundary Crossing Facilities (Seq. A)</b>																																																																												
<b>Phase 1 Portion A</b>	Mobilisation and preparation	■																																																																										
	Seawall dredging		■	■	■	■																																																																						
	Seawall filling			■	■	■	■	■																																																																				
	Reclamation dredging								■	■																																																																		
	Reclamation filling										■	■																																																																
<b>Phase 1 Portion B</b>	Seawall dredging			■	■	■	■																																																																					
	Seawall filling							■	■	■	■	■																																																																
	Reclamation dredging												■	■	■																																																													
	Reclamation filling													■	■	■	■																																																											
<b>Phase 1 Portion C</b>	Seawall dredging			■	■																																																																							
	Seawall filling				■	■																																																																						
	Reclamation filling										■	■	■	■	■	■																																																												
<b>Phase 1 Portion D</b>	Seawall dredging																	■	■																																																									
	Seawall filling																			■	■	■																																																						
	Reclamation dredging																				■	■																																																						
	Reclamation filling																					■	■	■																																																				
<b>Phase 2</b>	Seawall dredging																					■	■	■	■	■																																																		
	Seawall filling																																																																											
	Reclamation dredging																																																																											
	Reclamation filling																																																																											
<b>Pits for Mf Sediment</b>	Install sheet piles			■																																																																								
	Dredging to form the Mf pits				■																		■																																																					
	Redeposition of Mf sediments within pits																						■	■																																																				
	Remove sheet piles after capping by sandfill																																																																											
<b>APM &amp; FSD berth</b>	Dredging for seawall and reclamation			■	■	■																																																																						
	Seawall filling				■	■	■	■																																																																				
	Reclamation filling																																																																											
	Dredging for APM (by IMT Method)																																																																											
	Filling for APM after installation of IMT																																																																											

Remarks: ■ Dredging activity  
■ Filling activity  
■ Other activities



**NOTE:**  
 FIRST MEASURE: CAGE TYPE SILT CURTAIN FOR ALL GRAB DREDGERS (SEE TYPICAL SECTION ATTACHED)  
 SECOND MEASURE: SINGLE SILT CURTAIN AROUND THE SITE (SEE TYPICAL SECTION ATTACHED)

**LEGEND:**  
 ——— STEEL SHEET PILE WALL  
 ——— SINGLE SILT CURTAIN  
 ▨ DREDGED AREA  
 ▩ COMPLETED SLOPING SEAWALL  
 +++++ RE-DEPOSITION OF DREDGED MF SEDIMENT

STAGE 1 (ON FEB 2011)

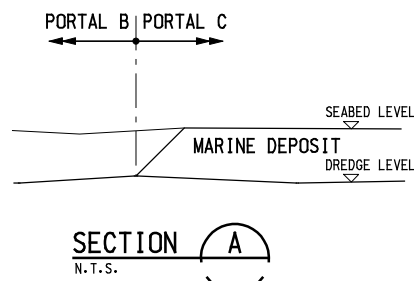
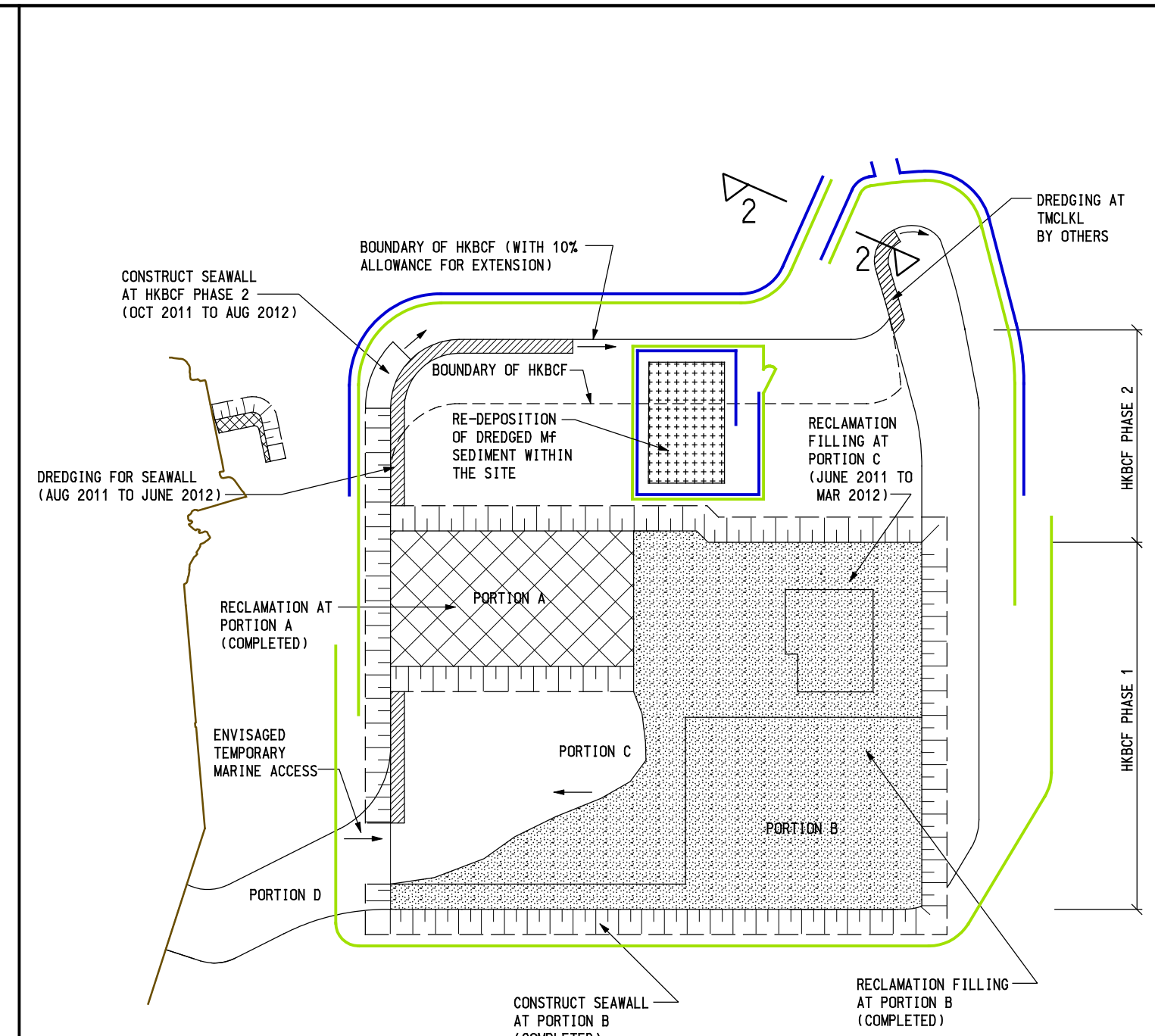
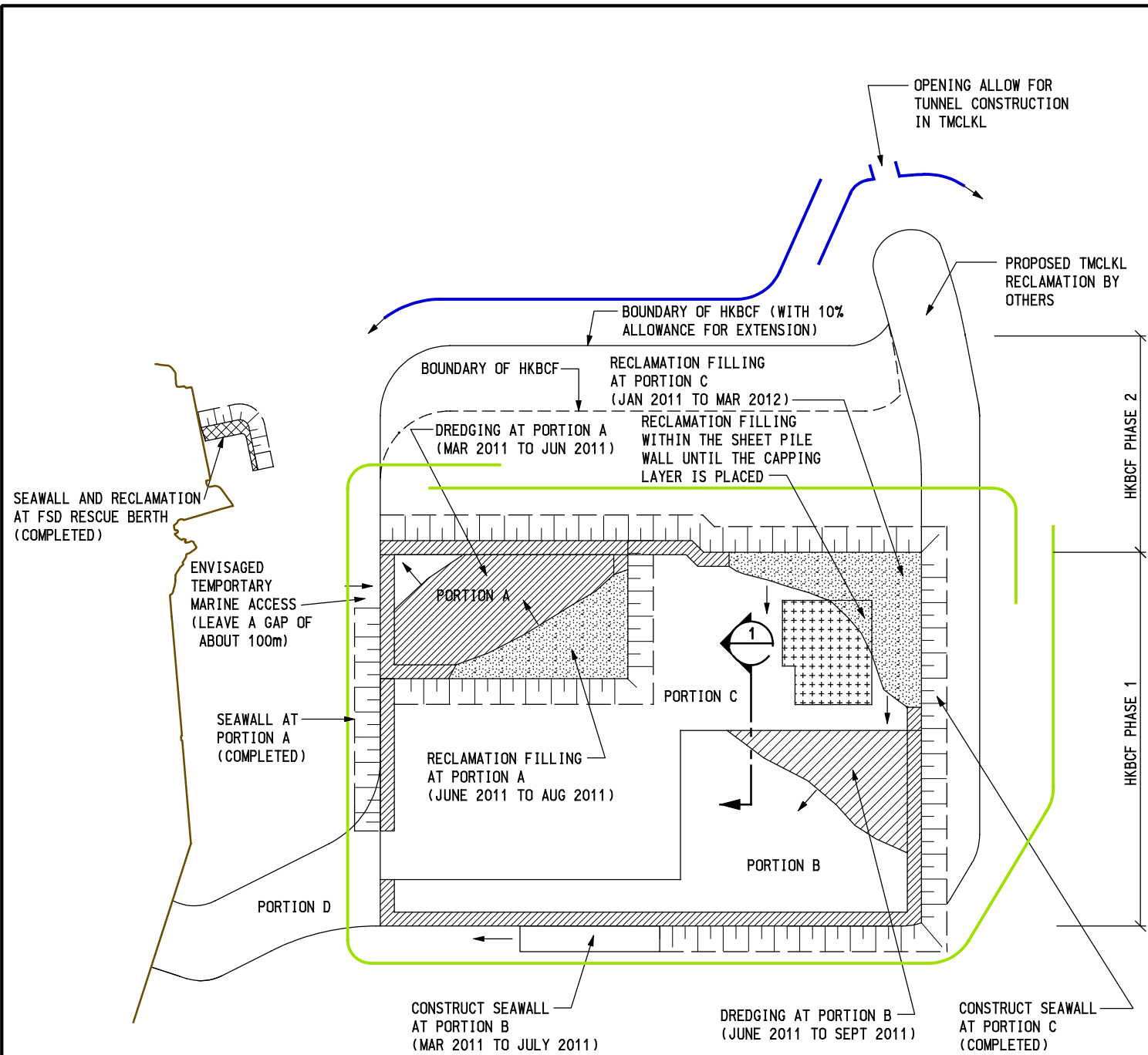
**NOTE:**  
 FIRST MEASURE: CAGE TYPE SILT CURTAIN FOR ALL GRAB DREDGERS (SEE TYPICAL SECTION ATTACHED)  
 SECOND MEASURE: SINGLE SILT CURTAIN AROUND THE SITE (SEE TYPICAL SECTION ATTACHED)

**LEGEND:**  
 ——— STEEL SHEET PILE WALL  
 ——— SINGLE SILT CURTAIN  
 ▨ DREDGED AREA  
 ▩ COMPLETED SLOPING SEAWALL  
 +++++ RE-DEPOSITION OF DREDGED MF SEDIMENT

STAGE 2 (ON APRIL 2011)

Printed by : \*o\*  
 File name : J:\425308\ARUP\CL\11\SKETCH\Reg\Cont\on25308-SK-41-301.dgn  
 29/7/2009

	<b>路政署</b> <b>HIGHWAYS DEPARTMENT</b> 港珠澳大桥香港工程管理處 Hong Kong - Zhuhai - Macao Bridge Hong Kong Project Management Office	<b>ARUP</b> Ove Arup & Partners Hong Kong Limited	Job Title <b>Agreement No. CE 14/2008 (CE)</b> <b>Hong Kong-Zhuhai-Macao Bridge Hong Kong</b> <b>Boundary Crossing Facilities – Investigation</b>	Drawing Title <b>ANTICIPATED CONSTRUCTION</b> <b>SEQUENCE OF HKBCF (SEQUENCE A)</b>	Drawn CN Date 02/09	Drawing No. <b>25308/041/301</b>
					Checked SK Approved AK	
A FIRST ISSUE 02/09					Description Date	



**NOTE:**  
 FIRST MEASURE: CAGE TYPE SILT CURTAIN FOR ALL GRAB DREDGERS (SEE TYPICAL SECTION ATTACHED)  
 SECOND MEASURE: SINGLE SILT CURTAIN AROUND THE SITE (SEE TYPICAL SECTION ATTACHED)

- LEGEND:**
- STEEL SHEET PILE WALL
  - SINGLE SILT CURTAIN
  - DREDGED AREA
  - COMPLETED SLOPING SEAWALL
  - RECLAMATION WORKS COMPLETED
  - RECLAMATION FILLING AREA
  - RE-DEPOSITION OF DREDGED MF SEDIMENT

STAGE 3 (ON JUNE 2011)

**NOTE:**  
 FIRST MEASURE: CAGE TYPE SILT CURTAIN FOR ALL GRAB DREDGERS (SEE TYPICAL SECTION ATTACHED)  
 SECOND MEASURE: SINGLE SILT CURTAIN AROUND THE SITE (SEE TYPICAL SECTION ATTACHED)

- LEGEND:**
- STEEL SHEET PILE WALL
  - SINGLE SILT CURTAIN
  - DREDGED AREA
  - COMPLETED SLOPING SEAWALL
  - RECLAMATION WORKS COMPLETED
  - RECLAMATION FILLING AREA
  - RE-DEPOSITION OF DREDGED MF SEDIMENT

STAGE 4 (ON DEC 2011)

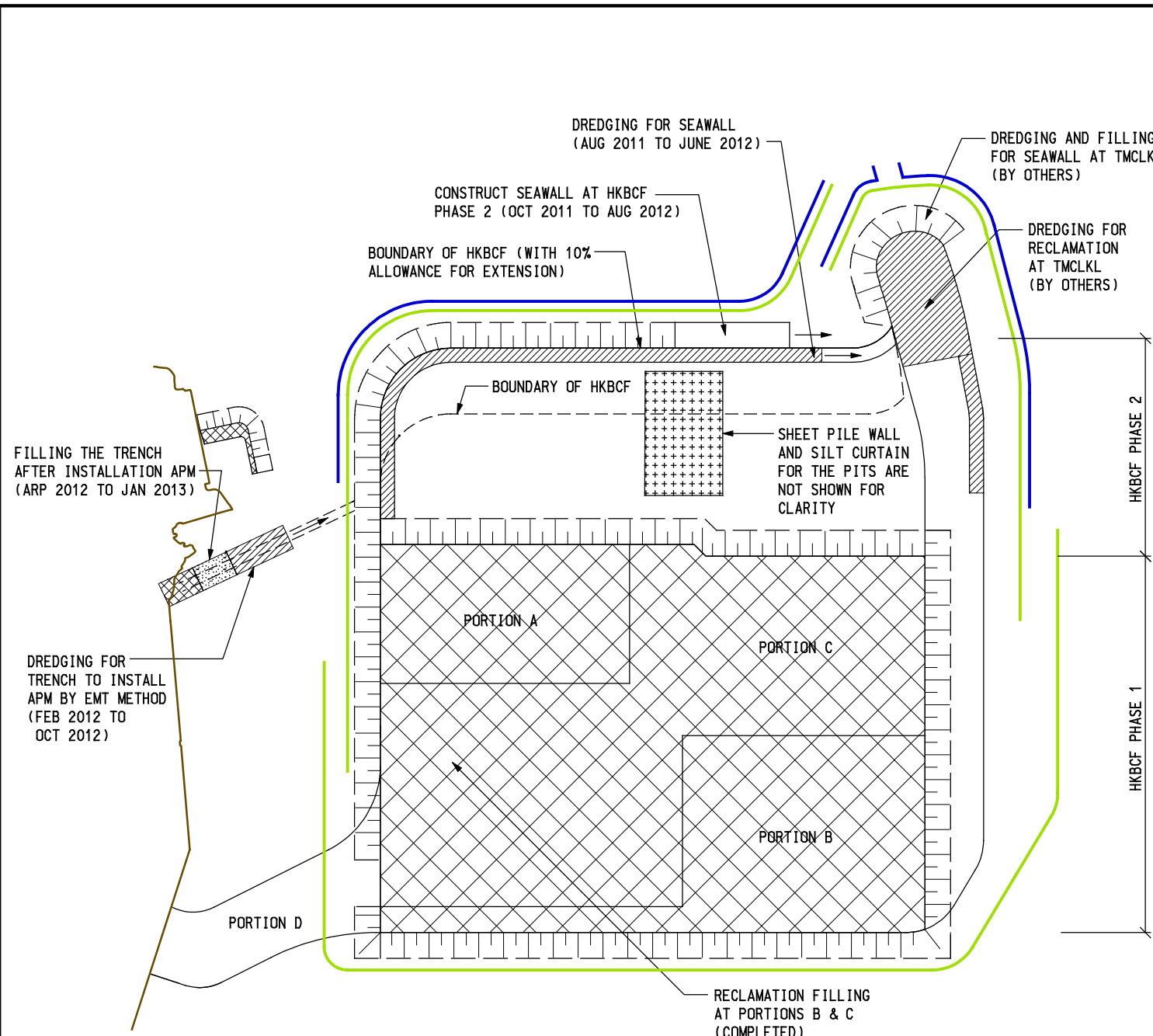


Job Title  
**Agreement No. CE 14/2008 (CE)**  
**Hong Kong-Zhuhai-Macao Bridge Hong Kong**  
**Boundary Crossing Facilities – Investigation**

Drawing Title  
**ANTICIPATED CONSTRUCTION**  
**SEQUENCE OF HKBCF (SEQUENCE A)**

Drawn	CN	Date	02/09	Drawing No.	25308/041/302
Checked	SK	Approved	AK		
Rev.	A	DESCRIPTION	02/09	Scale	1:12500 on A3
				Status	PRELIMINARY
				Rev.	A

29/7/2009  
 J:\425308\ARUP\CIVIL\SKETCH\Reg\Cont\25308-SK-41-302.dgn  
 Printed by :  
 File name :

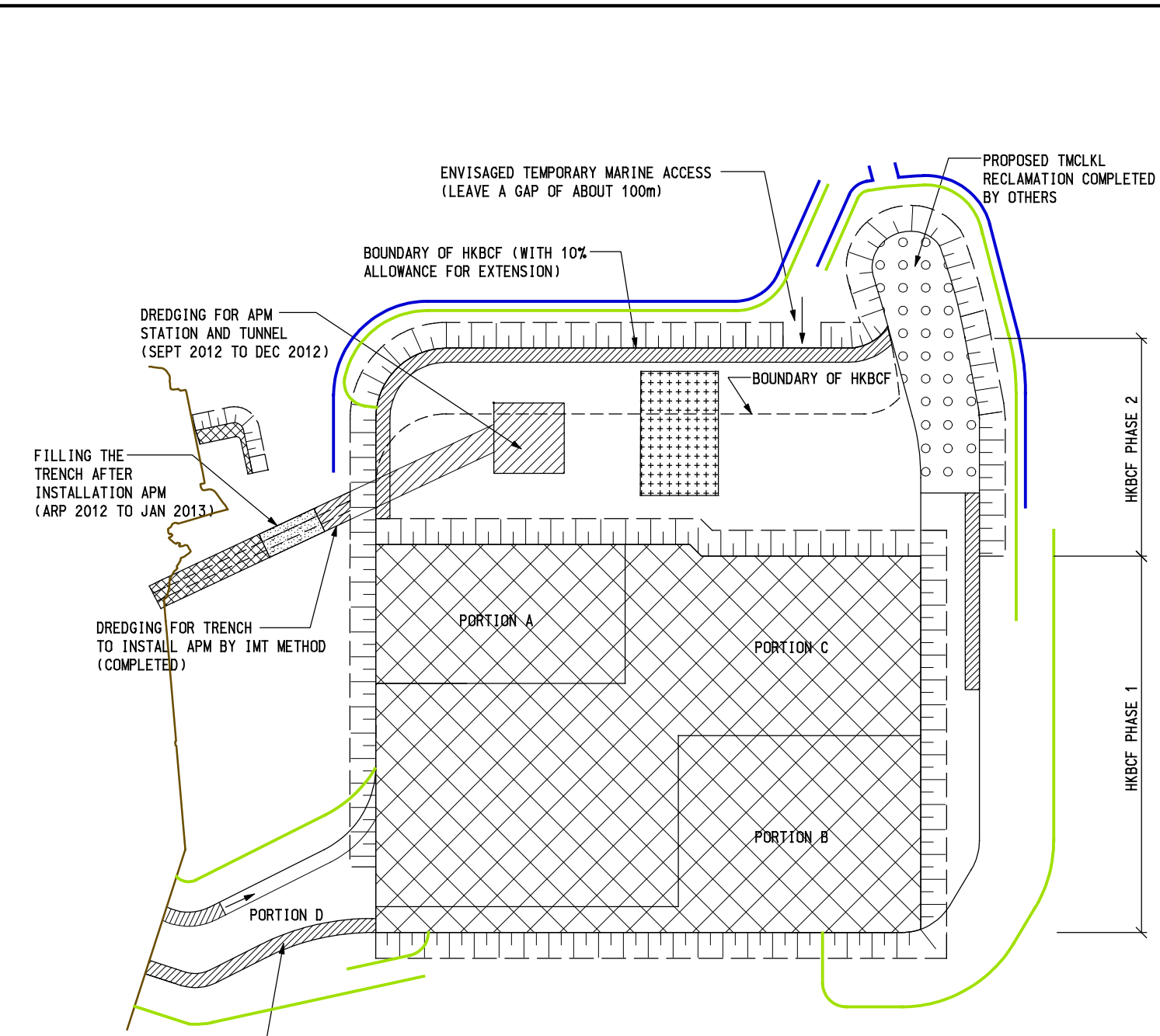


29/7/2009  
 J:\425308\ARUP\CIVIL\SKETCH\Reg\Cont\on25308-SK-41-303.dgn  
 Printed by :  
 Filename :

**NOTE:**  
 FIRST MEASURE: CAGE TYPE SILT CURTAIN FOR ALL GRAB DREDGERS (SEE TYPICAL SECTION ATTACHED)  
 SECOND MEASURE: SINGLE SILT CURTAIN AROUND THE SITE (SEE TYPICAL SECTION ATTACHED)

STAGE 5 (ON APR 2012)

- LEGEND:**
- STEEL SHEET PILE WALL
  - SINGLE SILT CURTAIN
  - DREDGED AREA
  - COMPLETED SLOPING SEAWALL
  - RECLAMATION WORKS COMPLETED
  - RECLAMATION FILLING AREA
  - RE-DEPOSITION OF DREDGED MF SEDIMENT



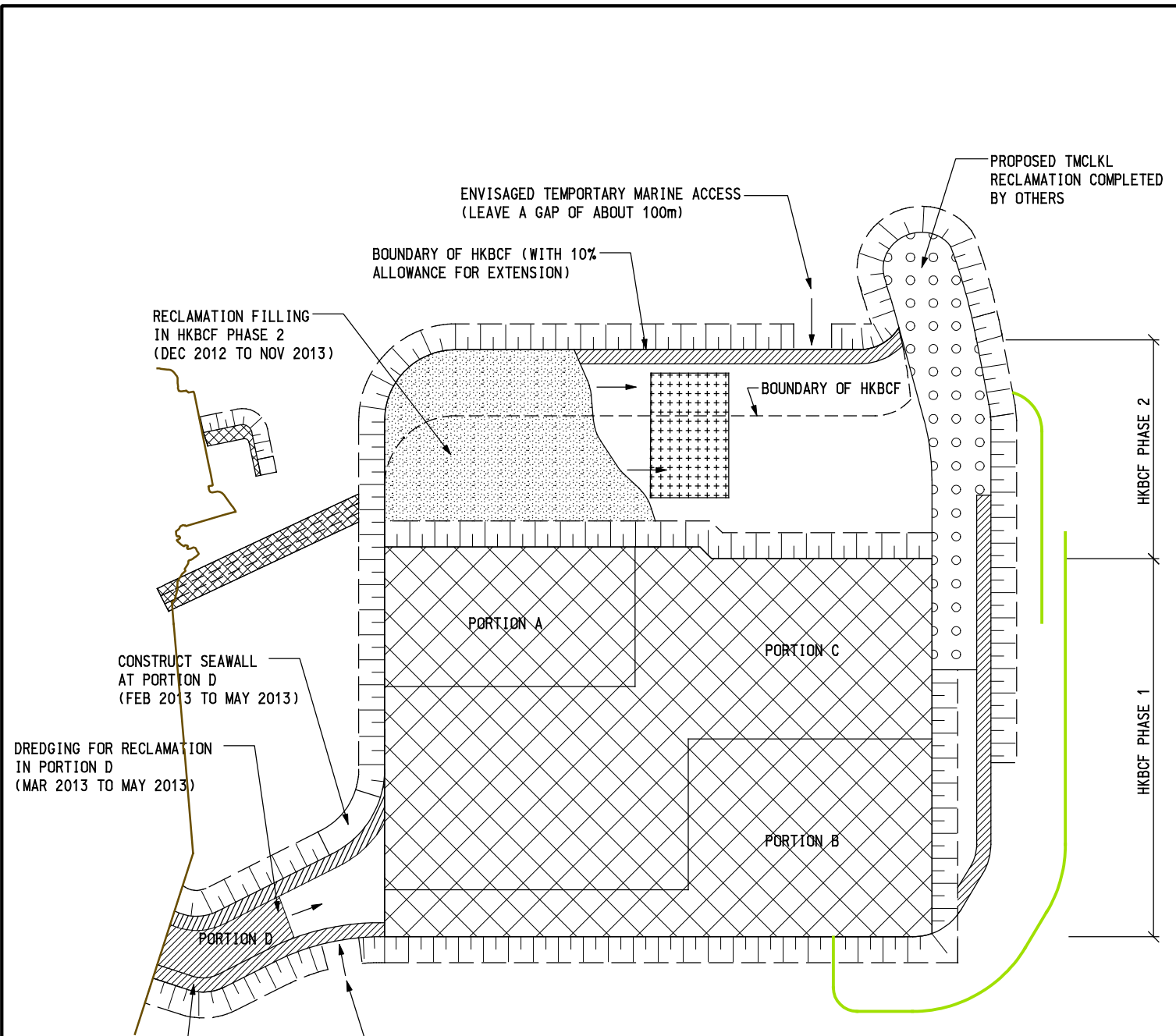
29/7/2009  
 J:\425308\ARUP\CIVIL\SKETCH\Reg\Cont\on25308-SK-41-303.dgn  
 Printed by :  
 Filename :

**NOTE:**  
 FIRST MEASURE: CAGE TYPE SILT CURTAIN FOR ALL GRAB DREDGERS (SEE TYPICAL SECTION ATTACHED)  
 SECOND MEASURE: SINGLE SILT CURTAIN AROUND THE SITE (SEE TYPICAL SECTION ATTACHED)

STAGE 6 (ON DEC 2012)

- LEGEND:**
- STEEL SHEET PILE WALL
  - SINGLE SILT CURTAIN
  - DREDGED AREA
  - COMPLETED SLOPING SEAWALL
  - COMPLETE TMCLKL RECLAMATION BY OTHERS
  - RECLAMATION WORKS COMPLETED
  - RECLAMATION FILLING AREA
  - RE-DEPOSITION OF DREDGED MF SEDIMENT

<p><b>路政署</b>  <b>HIGHWAYS DEPARTMENT</b>          港珠澳大橋香港工程管理處          Hong Kong - Zhuhai - Macao Bridge          Hong Kong Project Management Office</p>	<p><b>ARUP</b> Ove Arup &amp; Partners          Hong Kong Limited</p>	Job Title <b>Agreement No. CE 14/2008 (CE)</b> <b>Hong Kong-Zhuhai-Macao Bridge Hong Kong</b> <b>Boundary Crossing Facilities - Investigation</b>	Drawing Title <b>ANTICIPATED CONSTRUCTION</b> <b>SEQUENCE OF HKBCF (SEQUENCE A)</b>	Drawn	CN	Date	02/09	Drawing No.	25308/041/303
				Checked	SK	Approved	AK		
A		FIRST ISSUE	02/09						
Rev.		Description	Date						



29/7/2009  
 J:\625308\ARUP\CIVIL\SKETCH\Reg\Cont\on25308-SK-41-304.dgn  
 Printed by :  
 File name :

**NOTE:**  
 FIRST MEASURE: CAGE TYPE SILT CURTAIN FOR ALL GRAB DREDGERS (SEE TYPICAL SECTION ATTACHED)  
 SECOND MEASURE: SINGLE SILT CURTAIN AROUND THE SITE (SEE TYPICAL SECTION ATTACHED)

- LEGEND:**
- SINGLE SILT CURTAIN
  - DREDGED AREA
  - COMPLETED SLOPING SEAWALL
  - COMPLETE TMCLKL RECLAMATION BY OTHERS
  - RECLAMATION WORKS COMPLETED
  - RECLAMATION FILLING AREA
  - RE-DEPOSITION OF DREDGED MF SEDIMENT

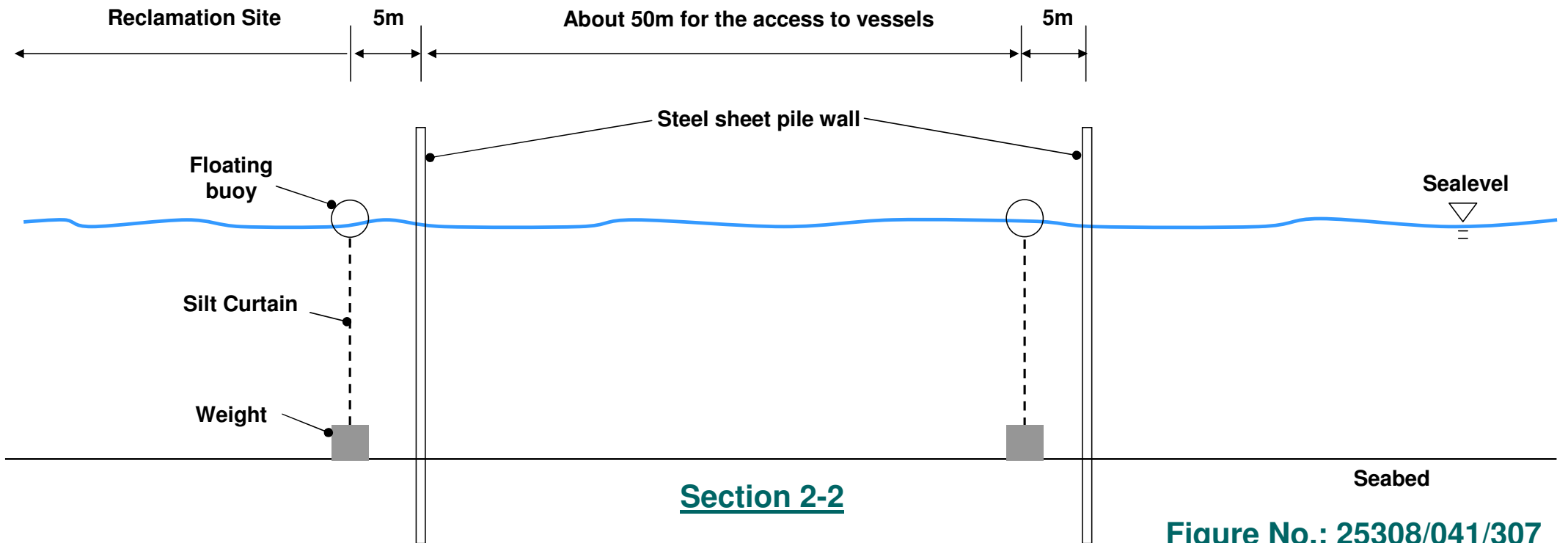
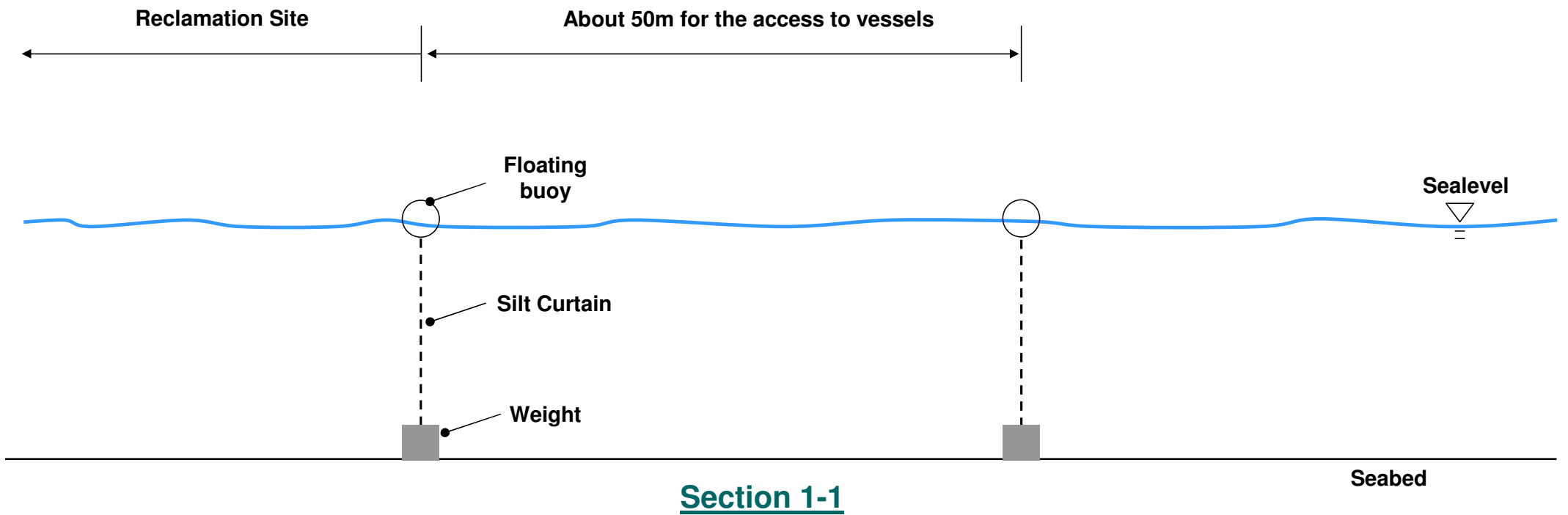
STAGE 7 (ON APR 2013)



Job Title  
**Agreement No. CE 14/2008 (CE)**  
**Hong Kong-Zhuhai-Macao Bridge Hong Kong**  
**Boundary Crossing Facilities - Investigation**

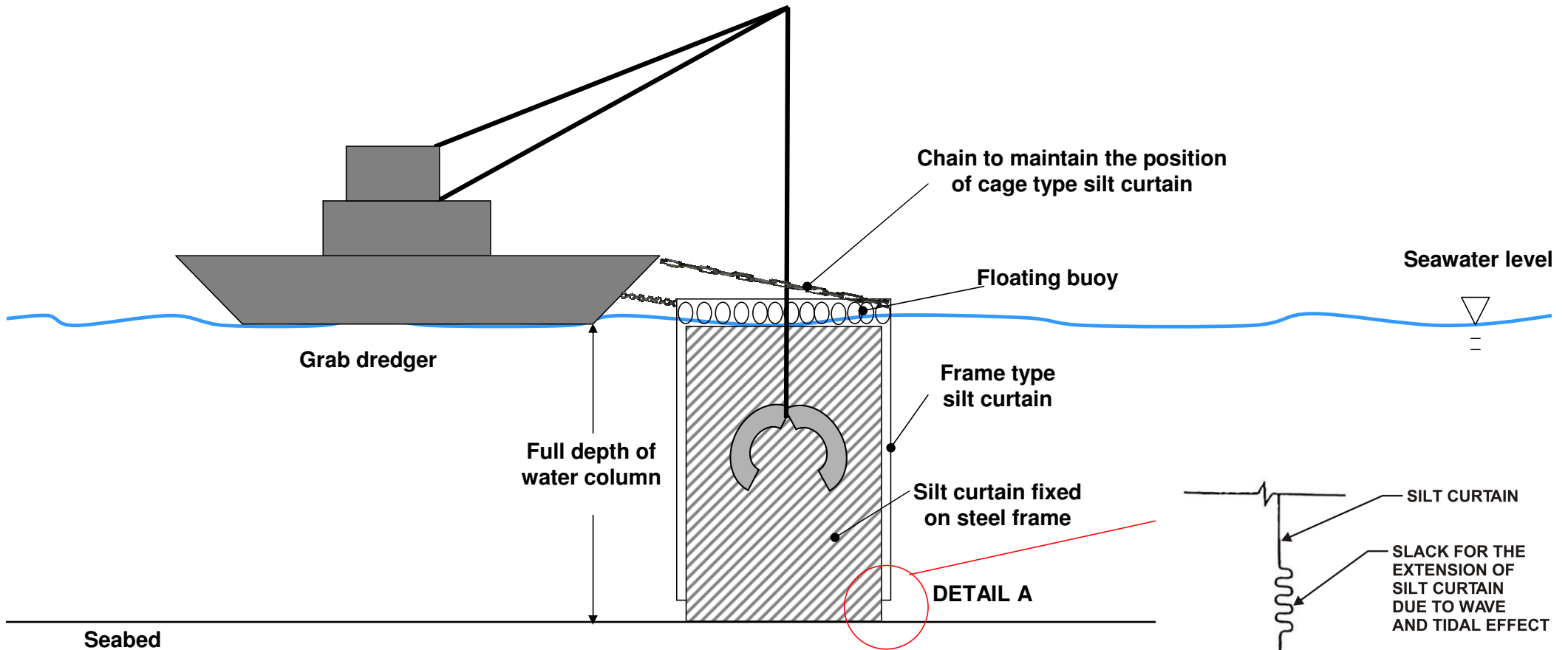
Drawing Title  
**ANTICIPATED CONSTRUCTION**  
**SEQUENCE OF HKBCF (SEQUENCE A)**

	Drawn CN	Date 02/09	Drawing No. <b>25308/041/304</b>
	Checked SK	Approved AK	
Rev. A	FIRST ISSUE		Date 02/09
	Description		Date
Scale 1:12500 on A3			Status <b>PRELIMINARY</b>
			Rev. <b>A</b>

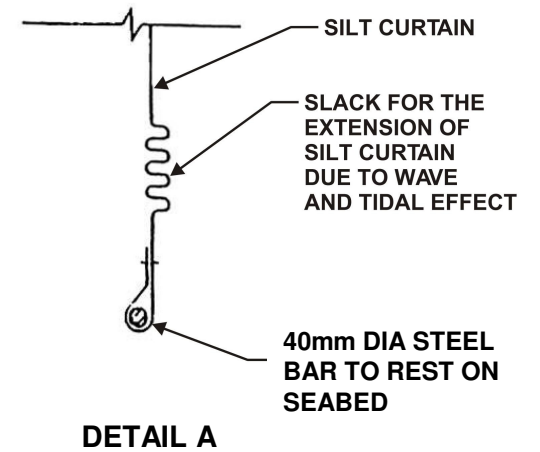


**Figure No.: 25308/041/307**





**Additional Cage Type Silt Curtain for Grab Dredgers**

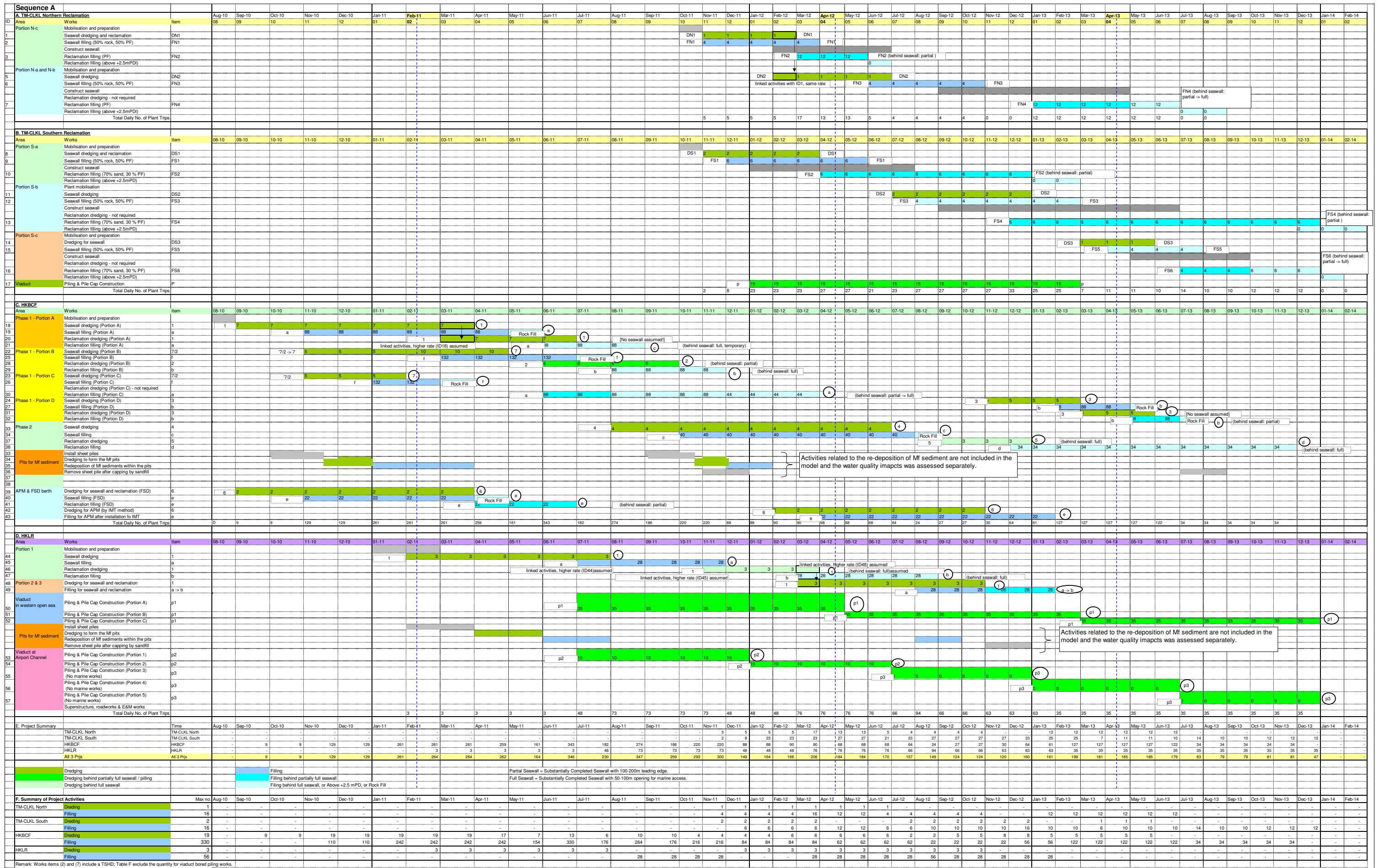


**Figure No.: 25308/041/308**

Sequence A			Aug-10	Sep-10	Oct-10	Nov-10	Dec-10	Jan-11	Feb-11	Mar-11	Apr-11	May-11	Jun-11	Jul-11	Aug-11	Sep-11	Oct-11	Nov-11	Dec-11	Jan-12	Feb-12	Mar-12	Apr-12	May-12	Jun-12	Jul-12	Aug-12	Sep-12	Oct-12	Nov-12	Dec-12	Jan-13	Feb-13	Mar-13	Apr-13	May-13	Jun-13	Jul-13	Aug-13	Sep-13	Oct-13	Nov-13	Dec-13	Jan-14	Feb-14
<b>A. TM-CLKL Northern Reclamation</b>																																													
10	Area	Item																																											
1	Portion N-c	Mobilisation and preparation																																											
2		Seawall dredging and reclamation																																											
3		Seawall filling (50% rock, 50% PF)																																											
4		Construct seawall																																											
5		Reclamation dredging (PF)																																											
6		Reclamation filling (above +2.5mPD)																																											
7	Portion N-a and N-b	Mobilisation and preparation																																											
8		Seawall dredging																																											
9		Seawall filling (50% rock, 50% PF)																																											
10		Construct seawall																																											
11		Reclamation dredging - not required																																											
12		Reclamation filling (PF)																																											
13		Reclamation filling (above +2.5mPD)																																											
14		Total Daily Production Rate																																											
<b>B. TM-CLKL Southern Reclamation</b>																																													
15	Area	Item																																											
16	Portion S-a	Works																																											
17		Seawall dredging and reclamation																																											
18		Seawall filling (50% rock, 50% PF)																																											
19		Construct seawall																																											
20		Reclamation dredging (70% sand, 30% PF)																																											
21		Reclamation filling (above +2.5mPD)																																											
22	Portion S-b	Plant mobilisation																																											
23		Seawall dredging																																											
24		Seawall filling (50% rock, 50% PF)																																											
25		Construct seawall																																											
26		Reclamation dredging - not required																																											
27		Reclamation filling (70% sand, 30% PF)																																											
28		Reclamation filling (above +2.5mPD)																																											
29	Portion S-c	Mobilisation and preparation																																											
30		Dredging for seawall																																											
31		Seawall filling (50% rock, 50% PF)																																											
32		Construct seawall																																											
33		Reclamation dredging - not required																																											
34		Reclamation filling (70% sand, 30% PF)																																											
35		Reclamation filling (above +2.5mPD)																																											
36	Viaduct	Piling & Pile Cap Construction																																											
37		Total Daily Production Rate																																											
<b>C. HKBCF</b>																																													
38	Area	Item																																											
39	Phase 1 - Portion A	Works																																											
40		Mobilisation and preparation																																											
41		Seawall dredging (Portion A)																																											
42		Seawall filling (Portion A)																																											
43		Reclamation dredging (Portion A)																																											
44		Reclamation filling (Portion A)																																											
45	Phase 1 - Portion B	Seawall dredging (Portion B)																																											
46		Seawall filling (Portion B)																																											
47		Reclamation dredging (Portion B)																																											
48		Reclamation filling (Portion B)																																											
49	Phase 1 - Portion C	Seawall dredging (Portion C)																																											
50		Seawall filling (Portion C)																																											
51		Reclamation dredging (Portion C) - not required																																											
52		Reclamation filling (Portion C)																																											
53	Phase 1 - Portion D	Seawall dredging (Portion D)																																											
54		Seawall filling (Portion D)																																											
55		Reclamation dredging (Portion D)																																											
56		Reclamation filling (Portion D)																																											
57	Phase 2	Seawall dredging																																											
58		Seawall filling																																											
59		Reclamation dredging																																											
60		Reclamation filling																																											
61		Install sheet piles																																											
62	Pits for Mf sediment	Dredging to form the Mf pits																																											
63		Redeposition of Mf sediments within the pits																																											
64		Remove sheet pile after capping by sandfill																																											
65		Total Daily Production Rate																																											
66	APM & FSD berth	Dredging for seawall and reclamation (FSD)																																											
67		Seawall filling (FSD)																																											
68		Reclamation filling (FSD)																																											
69		Dredging for APM by IMT method																																											
70		Filling for APM after installation to IMT																																											
71		Total Daily Production Rate																																											
<b>D. HKLR</b>																																													
72	Area	Item																																											
73	Portion 1	Works																																											
74		Mobilisation and preparation																																											
75		Seawall dredging																																											
76		Seawall filling																																											
77		Reclamation dredging																																											
78		Reclamation filling																																											
79	Portion 2 & 3	Dredging for seawall and reclamation																																											
80		Filling for seawall and reclamation																																											
81	Viaduct	Piling & Pile Cap Construction (Portion A)																																											
82		Piling & Pile Cap Construction (Portion B)																																											
83		Piling & Pile Cap Construction (Portion C)																																											
84		Install sheet piles																																											
85	Pits for Mf sediment	Dredging to form the Mf pits																																											
86		Redeposition of Mf sediments within the pits																																											
87		Remove sheet pile after capping by sandfill																																											
88	Viaduct at Airport Channel	Piling & Pile Cap Construction (Portion 1)																																											
89		Piling & Pile Cap Construction (Portion 2)																																											
90		Piling & Pile Cap Construction (Portion 3)																																											
91		(No marine works)																																											
92		Piling & Pile Cap Construction (Portion 4)																																											
93		(No marine works)																																											
94		Piling & Pile Cap Construction (Portion 5)																																											
95		(No marine works)																																											
96		Superstructure, roadworks & EDM works																																											
97		Total Daily Production Rate																																											
<b>E. Project Summary</b>																																													
98	Area	Time																																											
99		TM-CLKL North																																											
100		TM-CLKL South																																											
101		HKBCF																																											
102		HKLR																																											
103		All 3 Pits																																											
<b>F. Summary of Project Activities</b>																																													
104	Area	Max rate																																											
105		TM-CLKL North																																											
106		TM-CLKL South																																											
107		HKBCF																																											
108		HKLR																																											
109		All 3 Pits																																											
Remark: Works items (2) and (7) include a TSHD; Table F exclude the quantity for viaduct bored piling works.																																													

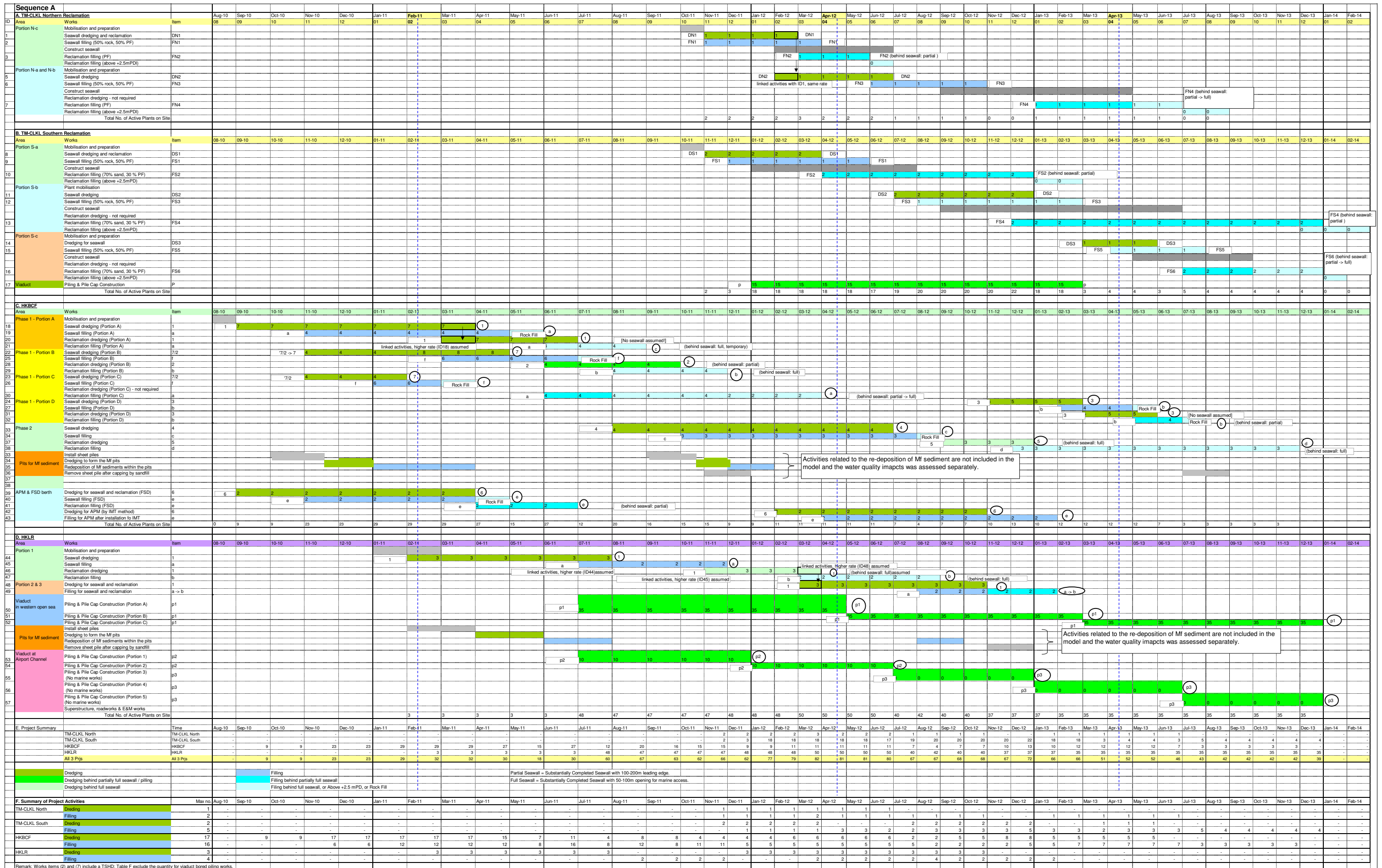
Overall Programme for TM-CLKL + HKBCF + HKLR - Maximum Daily Production Rate (bulked volume, m3/day) (Sequence A)

Figure 7b



Overall Programme for TM-CLKL + HKBCF + HKLR - Daily No. of Plant Trips (Sequence A)

Figure 7c



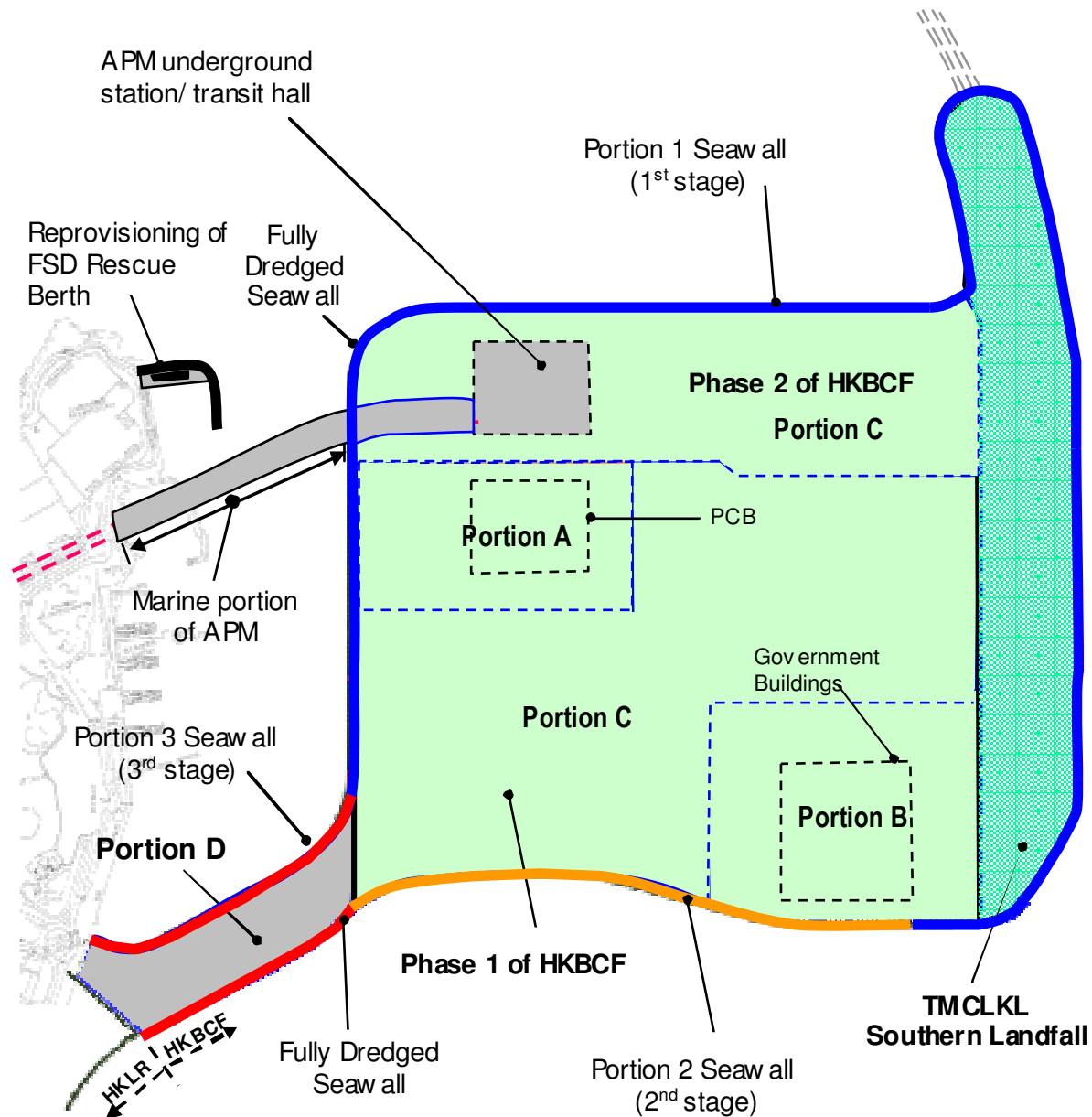
Overall Programme for TM-CLKL + HKBCF + HKLR - No. of Active Dredging/Filling Plants on Site (Sequence A)

Figure 7d

APPENDIX E2

---

**Typical Arrangement of  
HKBCF Sequence B**



- Fully dredged
  - Non-dredged (with Band Drains)
  - Portion 1 seawall
  - Portion 2 seawall
  - Portion 3 seawall
- } Fully dredged

**Phase 1 of HKBCF**

- Seawall – Fully Dredged
- Reclamation:
  - Portion A – Non-dredged (with band drains)
  - Portion B – Non-dredged (with band drains)
  - Portion C – Non-dredged (with band drains)
  - Portion D – Fully dredged
  - FSD Rescue Berth – Fully dredged

**Phase 2 of HKBCF**

- Seawall – Fully dredged
- Reclamation – Non-dredged (with band drains) except the areas at underground APM station and tunnel by fully dredged.

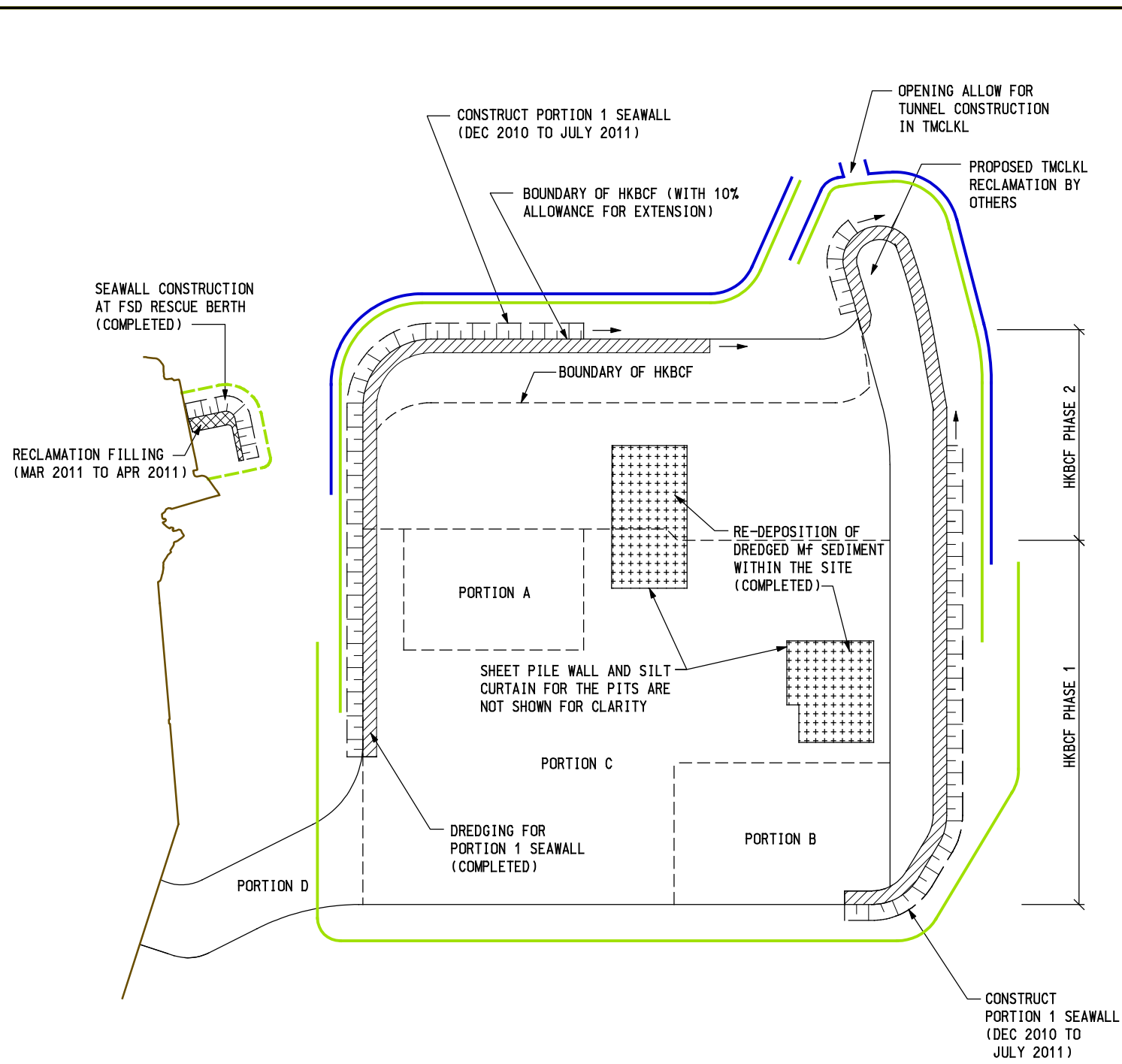
Activities		Year 2010				Year 2011				Year 2012				Year 2013				Year 2014				Year 2015				Year 2016																										
		A	S	O	N	D	J	F	M	A	M	J	J	A	S	O	N	D	J	F	M	A	M	J	J	A	S	O	N	D	J	F	M	A	M	J	J	A	S	O	N	D	J	F	M	A	M	J	J	A	S	O
<b>Hong Kong Boundary Crossing Facilities (Seq. B)</b>																																																				
Seawalls	Mobilisation and preparation																																																			
	Seawall dredging (Portion 1)	█				█																																														
	Seawall filling (Portion 1)			█		█		█		█																																										
	Seawall dredging (Portion 2)									█																																										
	Seawall filling (Portion 2)									█		█		█																																						
	Seawall dredging (Portion 3)									█																																										
	Seawall filling (Portion 3)									█		█		█																																						
Phase 1 Portion A	Sand blanket																																																			
	Reclamation filling									█		█																																								
Phase 1 Portion B	Sand blanket																																																			
	Reclamation filling									█		█		█		█																																				
Phase 1 Portion C	Sand blanket																																																			
	Reclamation filling									█		█		█		█		█		█																																
Phase 1 Portion D	Dredging																																																			
	Reclamation filling									█		█		█		█																																				
Phase 2	Sand blanket																																																			
	Reclamation filling									█		█		█		█		█		█																																
Pits for Mf sediment	Install sheet piles	█		█		█		█		█		█		█		█		█		█		█		█		█		█		█																						
	Dredging to form the Mf pits	█		█		█		█		█		█		█		█		█		█		█		█		█		█		█																						
	Redeposition of Mf sediments within the pits	█		█		█		█		█		█		█		█		█		█		█		█		█		█		█																						
	Remove sheet piles after capping by sandfill									█		█		█		█		█		█		█		█		█		█		█																						
APM & FSD berth	Dredging for seawall and reclamation (FSD)	█				█				█				█				█				█				█																										
	Seawall filling (FSD)	█		█		█		█		█		█		█		█		█		█		█		█		█		█		█																						
	Reclamation filling (FSD)	█		█		█		█		█		█		█		█		█		█		█		█		█		█		█																						
	Dredging for APM (by IMT Method)					█				█				█				█				█				█																										
									█		█		█		█		█		█		█		█		█		█		█		█																					

Remarks:  Dredging activity  
 Filling activity  
 Other activities





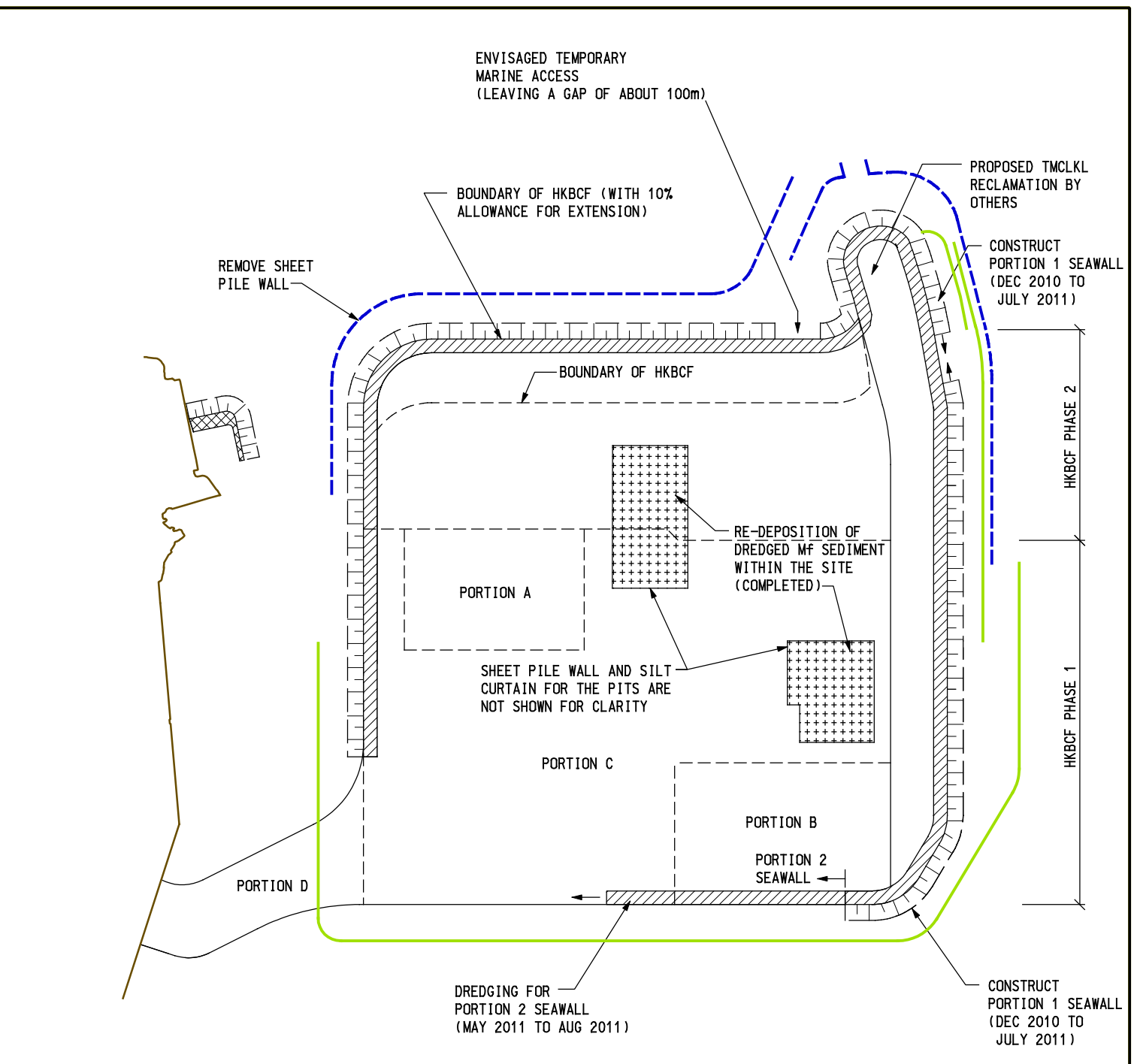
Printed by : \*o\*  
 File name : J:\425308\ARUP\CIVIL\SKETCH\Reg\Cont1 on 25308-SK-41-302A.dgn  
 29/7/2009



**NOTE:**  
 FIRST MEASURE: CAGE TYPE SILT CURTAIN FOR ALL GRAB DREDGERS (SEE TYPICAL SECTION ATTACHED)  
 SECOND MEASURE: SINGLE SILT CURTAIN AROUND THE SITE (SEE TYPICAL SECTION ATTACHED)

STAGE 3 (ON APR 2011)

- LEGEND:**
- STEEL SHEET PILE WALL
  - SINGLE SILT CURTAIN
  - DREDGED AREA
  - COMPLETED SLOPING SEAWALL
  - RE-DEPOSITION OF DREDGED MF SEDIMENT
  - RECLAMATION WORKS COMPLETED



**NOTE:**  
 FIRST MEASURE: CAGE TYPE SILT CURTAIN FOR ALL GRAB DREDGERS (SEE TYPICAL SECTION ATTACHED)  
 SECOND MEASURE: SINGLE SILT CURTAIN AROUND THE SITE (SEE TYPICAL SECTION ATTACHED)

STAGE 4 (ON JUNE 2011)

- LEGEND:**
- STEEL SHEET PILE WALL
  - SINGLE SILT CURTAIN
  - DREDGED AREA
  - COMPLETED SLOPING SEAWALL
  - RE-DEPOSITION OF DREDGED MF SEDIMENT
  - RECLAMATION WORKS COMPLETED

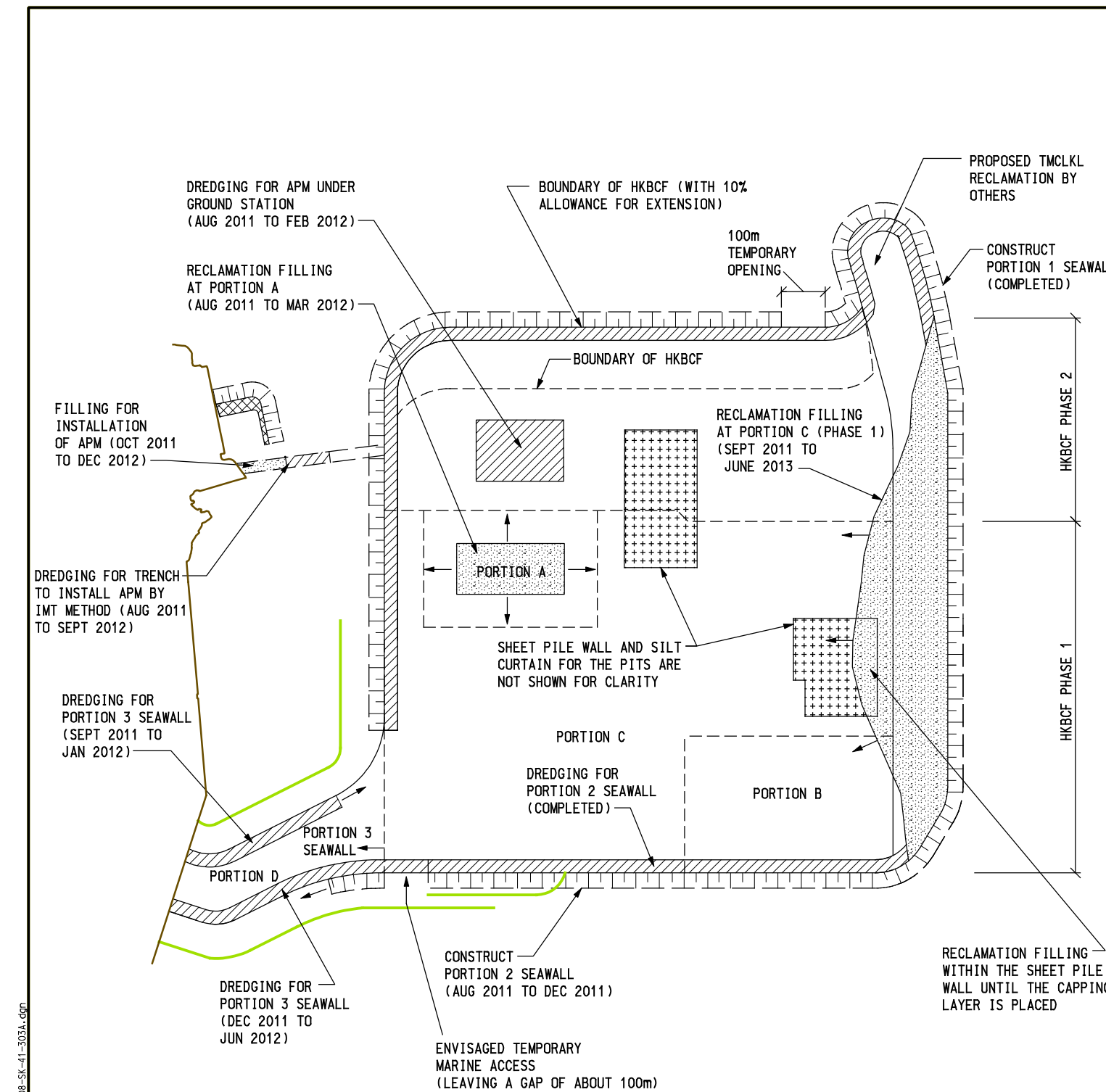
**路政署**  
**HIGHWAYS DEPARTMENT**  
 港珠澳大橋香港工程管理局  
 Hong Kong - Zhuhai - Macao Bridge  
 Hong Kong Project Management Office

**ARUP** Ove Arup & Partners  
 Hong Kong Limited

Job Title  
**Agreement No. CE 14/2008 (CE)**  
**Hong Kong-Zhuhai-Macao Bridge Hong Kong**  
**Boundary Crossing Facilities - Investigation**

Drawing Title  
**ANTICIPATED CONSTRUCTION**  
**SEQUENCE OF HKBCF (SEQUENCE B)**

Drawn	CN	Date	02/09	Drawing No.	25308/041/302A
Checked	SK	Approved	AK		
Rev.	A	DESCRIPTION	02/09	Scale	1:12500 on A3
				Status	PRELIMINARY
				Rev.	A

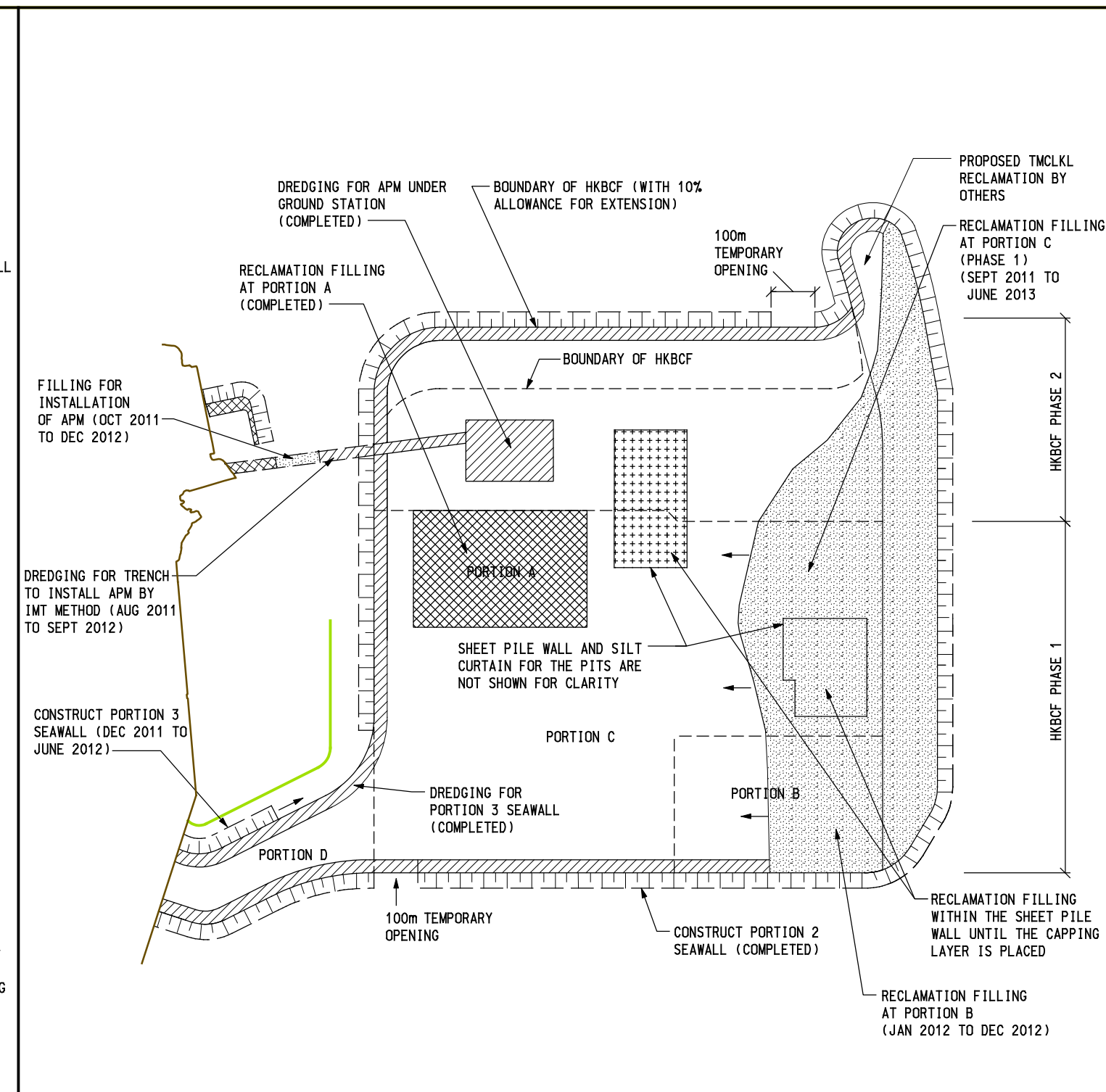


**NOTE:**  
 FIRST MEASURE: CAGE TYPE SILT CURTAIN FOR ALL GRAB DREDGERS (SEE TYPICAL SECTION ATTACHED)  
 SECOND MEASURE: SINGLE SILT CURTAIN AROUND THE SITE (SEE TYPICAL SECTION ATTACHED)

**LEGEND:**

- STEEL SHEET PILE WALL
- SINGLE SILT CURTAIN
- DREDGED AREA
- COMPLETED SLOPING SEAWALL
- RECLAMATION FILLING AREA
- RECLAMATION WORKS COMPLETED
- RE-DEPOSITION OF DREDGED MF SEDIMENT

**STAGE 5 (ON DEC 2011)**



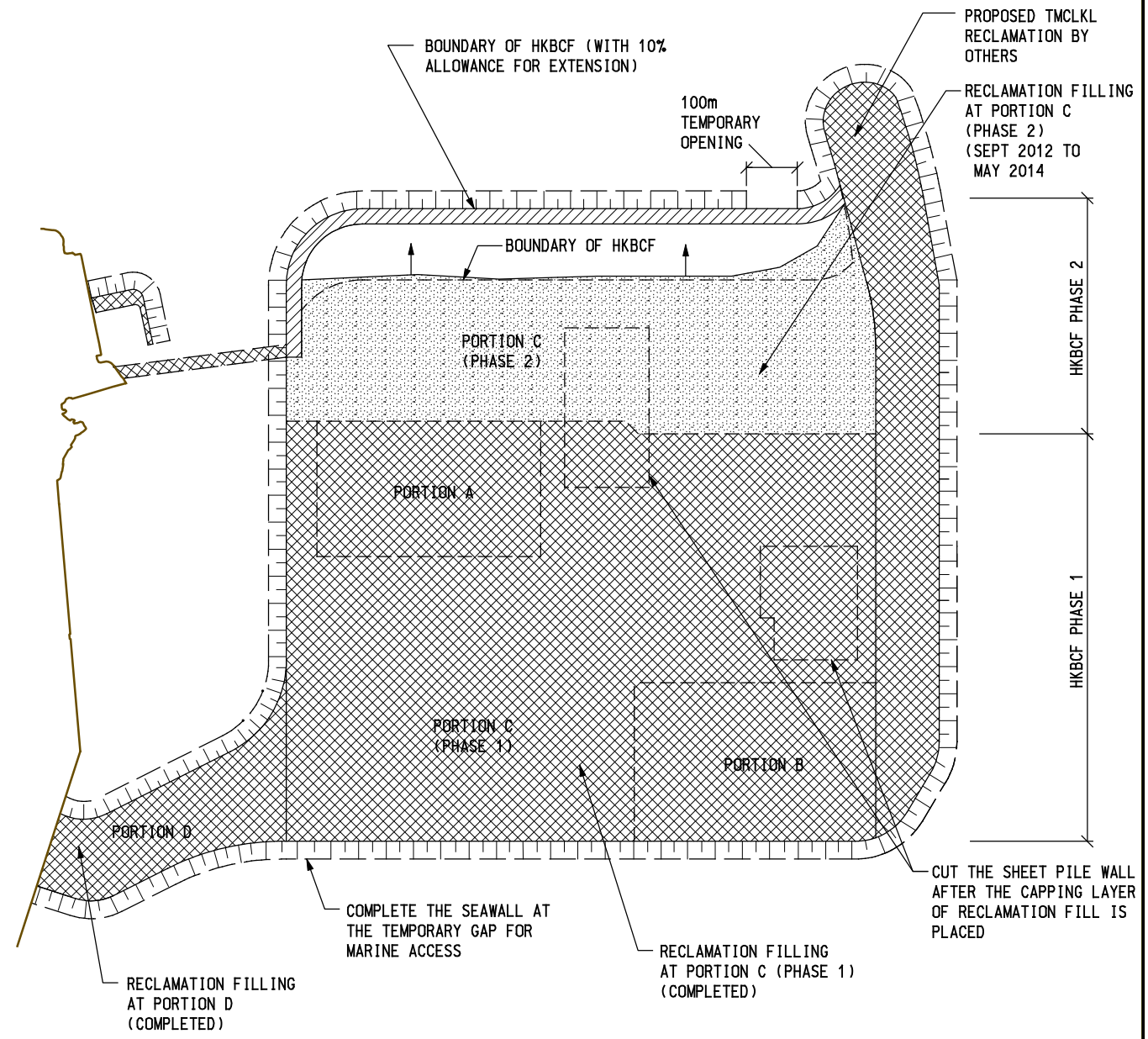
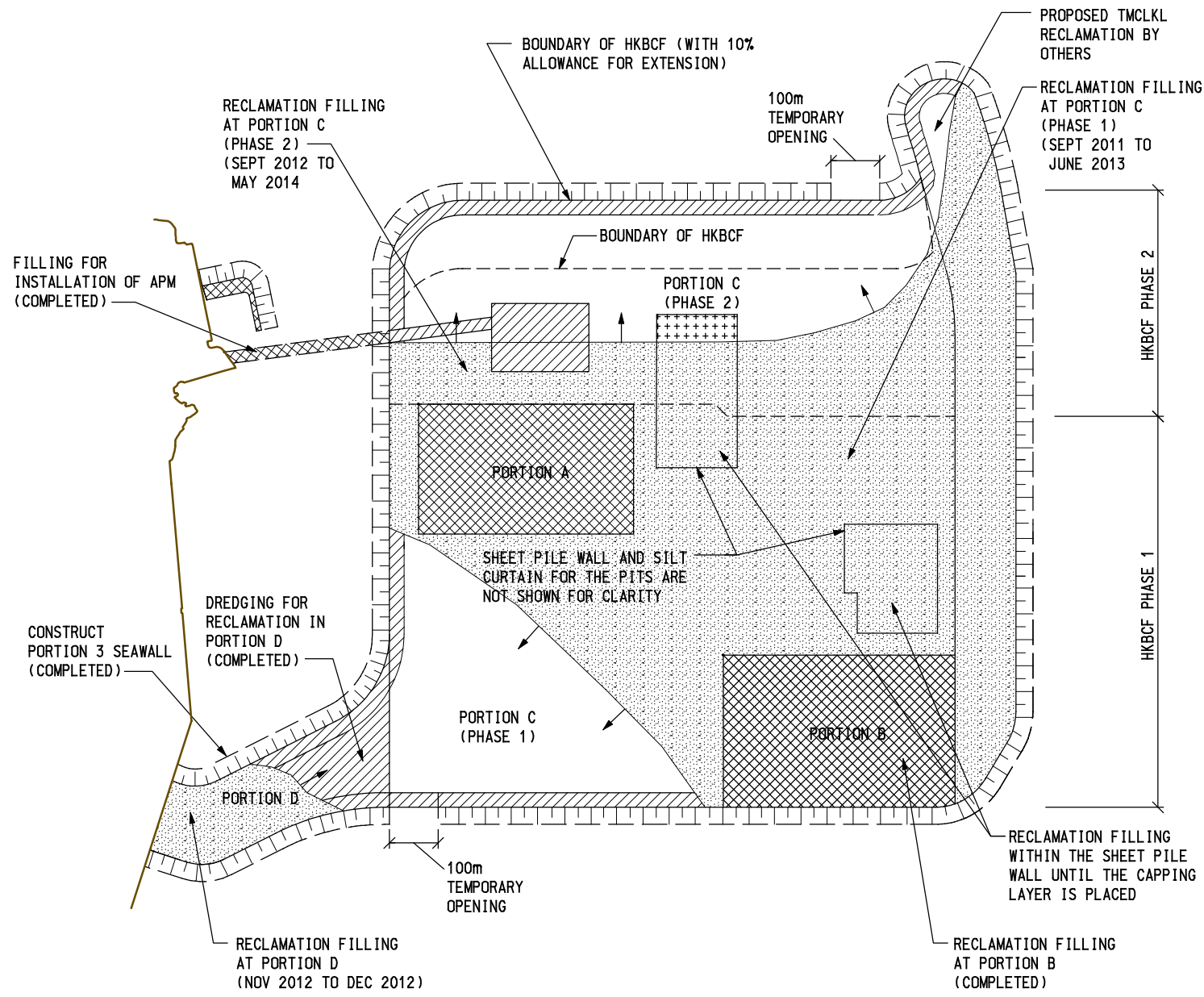
**NOTE:**  
 FIRST MEASURE: CAGE TYPE SILT CURTAIN FOR ALL GRAB DREDGERS (SEE TYPICAL SECTION ATTACHED)  
 SECOND MEASURE: SINGLE SILT CURTAIN AROUND THE SITE (SEE TYPICAL SECTION ATTACHED)

**LEGEND:**

- SINGLE SILT CURTAIN
- DREDGED AREA
- COMPLETED SLOPING SEAWALL
- RECLAMATION FILLING AREA
- RECLAMATION WORKS COMPLETED
- RE-DEPOSITION OF DREDGED MF SEDIMENT

**STAGE 6 (ON APR 2012)**

29/7/2009  
 J:\425308\ARUP\CIVIL\SKETCH\Reg\Cont\on25308-SK-41-303A.dgn  
 Printed by : \*o\*  
 File name :



**NOTE:**  
 FIRST MEASURE: CAGE TYPE SILT CURTAIN FOR ALL GRAB DREDGERS (SEE TYPICAL SECTION ATTACHED)  
 SECOND MEASURE: SINGLE SILT CURTAIN AROUND THE SITE (SEE TYPICAL SECTION ATTACHED)

- LEGEND:**
- DREDGED AREA
  - COMPLETED SLOPING SEAWALL
  - RECLAMATION FILLING AREA
  - RECLAMATION WORKS COMPLETED
  - RE-DEPOSITION OF DREDGED MF SEDIMENT

STAGE 7 (ON DEC 2012)

**NOTE:**  
 FIRST MEASURE: CAGE TYPE SILT CURTAIN FOR ALL GRAB DREDGERS (SEE TYPICAL SECTION ATTACHED)  
 SECOND MEASURE: SINGLE SILT CURTAIN AROUND THE SITE (SEE TYPICAL SECTION ATTACHED)

- LEGEND:**
- DREDGED AREA
  - COMPLETED SLOPING SEAWALL
  - RECLAMATION FILLING AREA
  - RECLAMATION WORKS COMPLETED
  - RE-DEPOSITION OF DREDGED MF SEDIMENT

STAGE 8 (ON DEC 2013)

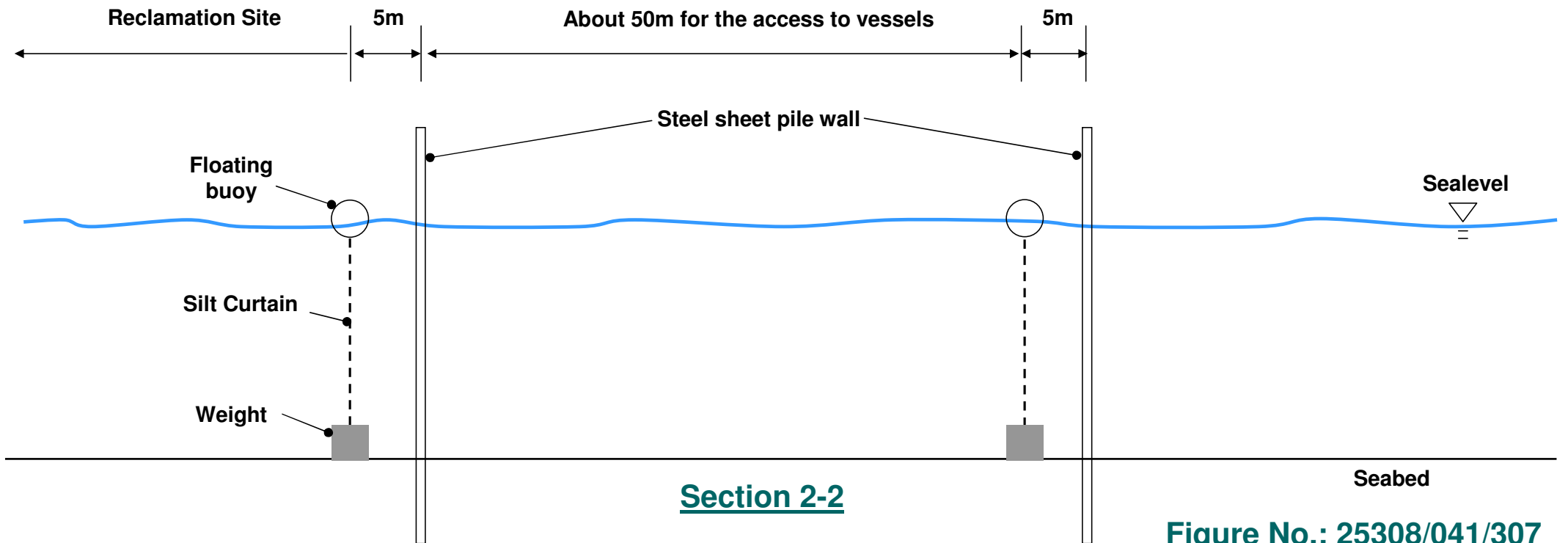
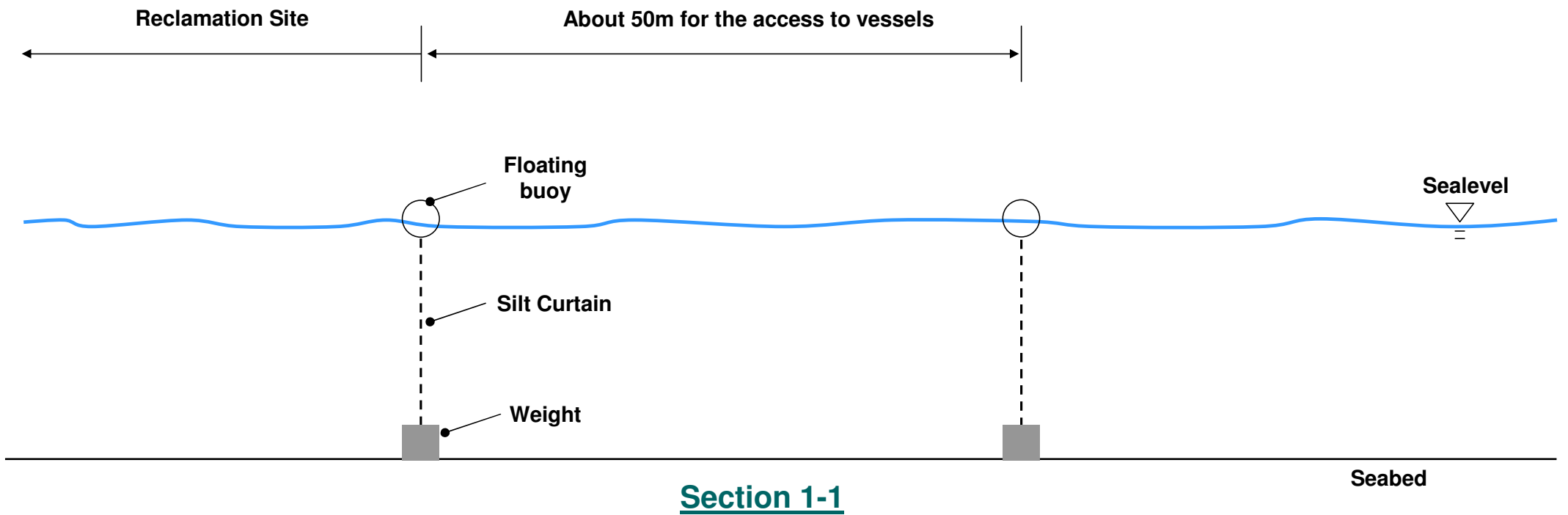
Printed by : \*o\*  
 File name : J:\25308\ARUP\CIVIL\SKETCH\Reg\Cont1 on 25308-SK-41-304A.dgn  
 29/7/2009



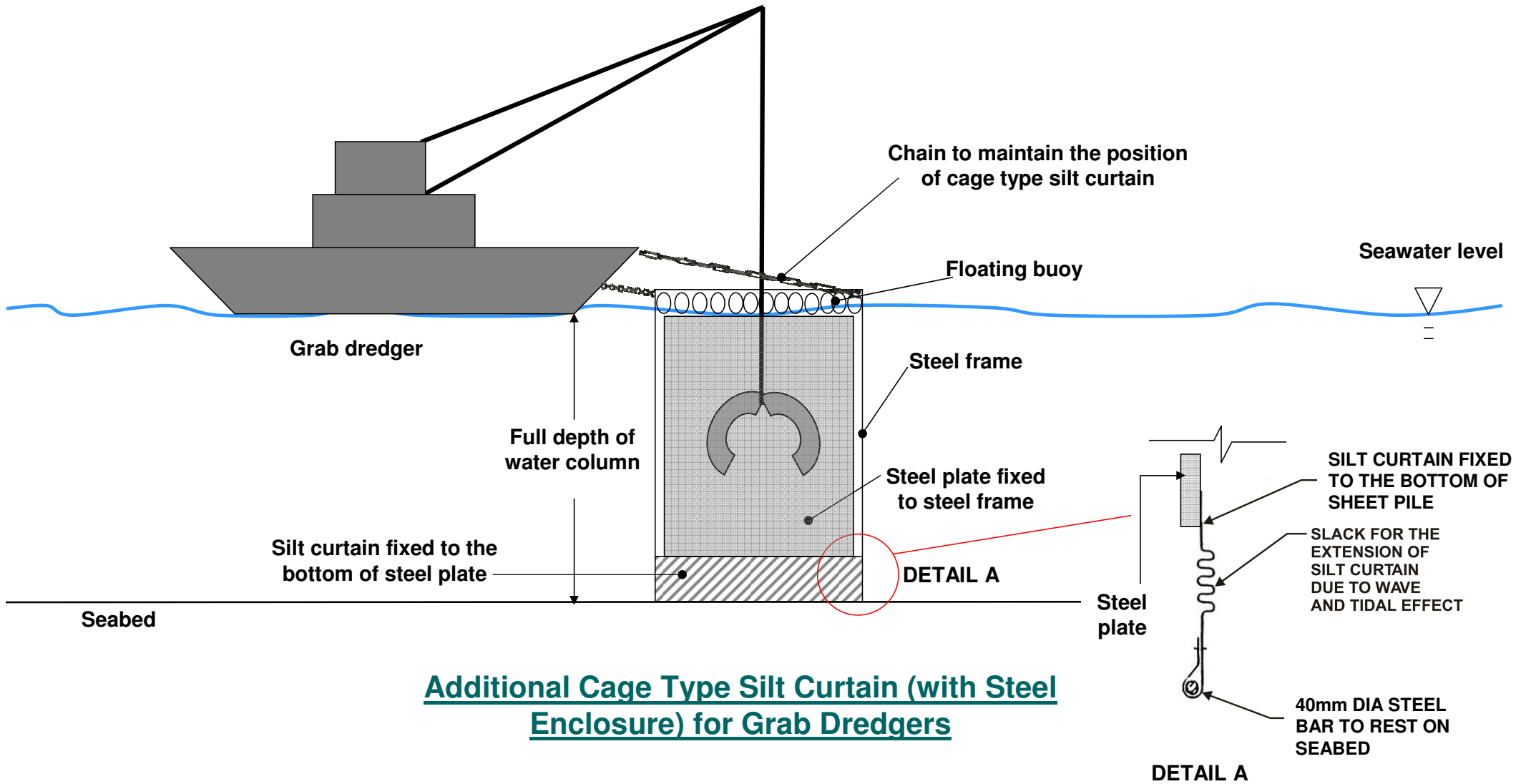
Job Title  
**Agreement No. CE 14/2008 (CE)**  
**Hong Kong-Zhuhai-Macao Bridge Hong Kong**  
**Boundary Crossing Facilities - Investigation**

Drawing Title  
**ANTICIPATED CONSTRUCTION**  
**SEQUENCE OF HKBCF (SEQUENCE B)**

Drawn	CN	Date	02/09	Drawing No.	25308/041/304A
Checked	SK	Approved	AK		
Rev.	A	DESCRIPTION	02/09	Scale	1:12500 on A3
				Status	PRELIMINARY
				Rev.	A



**Figure No.: 25308/041/307**



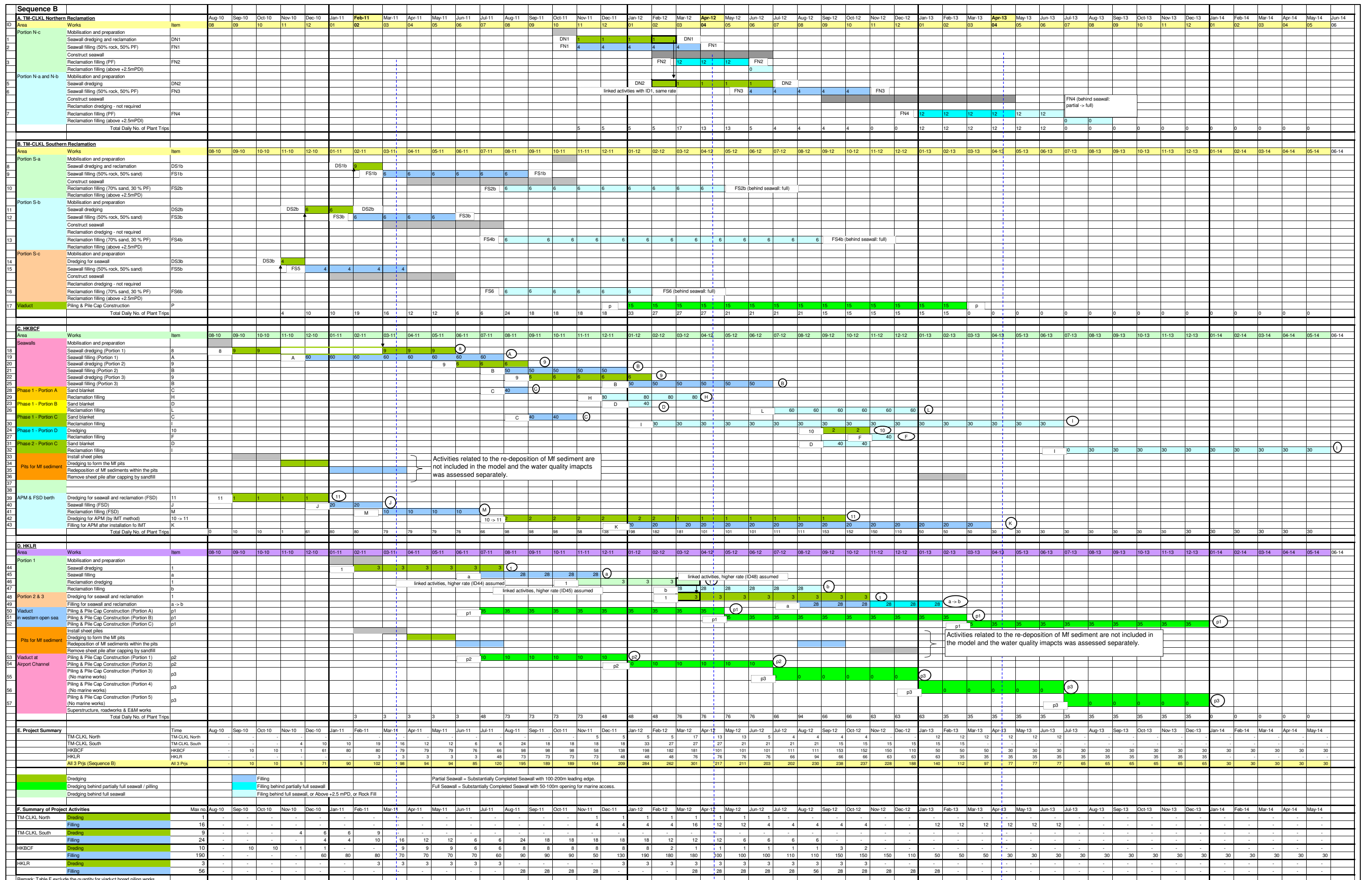
**Additional Cage Type Silt Curtain (with Steel Enclosure) for Grab Dredgers**

**Figure No.: 25308/041/308a**

Sequence B			Aug-10	Sep-10	Oct-10	Nov-10	Dec-10	Jan-11	Feb-11	Mar-11	Apr-11	May-11	Jun-11	Jul-11	Aug-11	Sep-11	Oct-11	Nov-11	Dec-11	Jan-12	Feb-12	Mar-12	Apr-12	May-12	Jun-12	Jul-12	Aug-12	Sep-12	Oct-12	Nov-12	Dec-12	Jan-13	Feb-13	Mar-13	Apr-13	May-13	Jun-13	Jul-13	Aug-13	Sep-13	Oct-13	Nov-13	Dec-13	Jan-14	Feb-14	Mar-14	Apr-14	May-14	Jun-14
<b>A. TM-CLKL Northern Reclamation</b>																																																	
Area	Works	Item																																															
Portion N-c	Mobilisation and preparation	DN1																																															
	Seawall dredging and reclamation	FN1																																															
	Seawall filling (50% rock, 50% PF)	FN1																																															
	Construct seawall	FN2																																															
Portion N-a and N-b	Mobilisation and preparation	DN2																																															
	Seawall dredging	FN3																																															
	Seawall filling (50% rock, 50% PF)	FN3																																															
	Construct seawall	FN4																																															
Total Daily Production Rate																																																	
<b>B. TM-CLKL Southern Reclamation</b>																																																	
Area	Works	Item																																															
Portion S-a	Mobilisation and preparation	DS1b																																															
	Seawall dredging and reclamation	FS1b																																															
	Seawall filling (50% rock, 50% sand)	FS1b																																															
	Construct seawall	FS2b																																															
Portion S-b	Mobilisation and preparation	DS2b																																															
	Seawall dredging	FS3b																																															
	Seawall filling (50% rock, 50% sand)	FS3b																																															
	Construct seawall	FS4b																																															
Portion S-c	Mobilisation and preparation	DS3b																																															
	Seawall dredging	FS5																																															
	Seawall filling (50% rock, 50% sand)	FS5																																															
	Construct seawall	FS6																																															
Total Daily Production Rate																																																	
<b>C. HKBCF</b>																																																	
Area	Works	Item																																															
Seawalls	Mobilisation and preparation	A																																															
	Seawall dredging (Portion 1)	B																																															
	Seawall filling (Portion 1)	A																																															
	Seawall dredging (Portion 2)	C																																															
	Seawall filling (Portion 2)	B																																															
	Seawall dredging (Portion 3)	D																																															
	Seawall filling (Portion 3)	C																																															
	Sand blanket	H																																															
	Reclamation filling	D																																															
	Reclamation filling	L																																															
Phase 1 - Portion A	Sand blanket	C																																															
	Reclamation filling	H																																															
	Reclamation filling	D																																															
Phase 1 - Portion B	Sand blanket	C																																															
	Reclamation filling	H																																															
	Reclamation filling	D																																															
Phase 1 - Portion C	Sand blanket	C																																															
	Reclamation filling	H																																															
	Reclamation filling	D																																															
Phase 1 - Portion D	Sand blanket	C																																															
	Reclamation filling	H																																															
	Reclamation filling	D																																															
Phase 2 - Portion C	Sand blanket	C																																															
	Reclamation filling	H																																															
	Reclamation filling	D																																															
Pits for Mf sediment	Install sheet piles	I																																															
	Dredging to form the Mf pits	I																																															
	Redeposition of Mf sediments within the pits	I																																															
	Remove sheet pile after capping by sandfill	I																																															
APM & FSD berth	Dredging for seawall and reclamation (FSD)	J																																															
	Seawall filling (FSD)	J																																															
	Reclamation filling (FSD)	M																																															
	Dredging for APM (by IMT method)	10 -> 11																																															
Total Daily Production Rate																																																	
<b>D. HKLR</b>																																																	
Area	Works	Item																																															
Portion 1	Mobilisation and preparation	1																																															
	Seawall filling	a																																															
	Reclamation dredging	1																																															
	Reclamation filling	b																																															
Portion 2 & 3	Dredging for seawall and reclamation	1																																															
	Filling for seawall and reclamation	a -> b																																															
	Piling & Pile Cap Construction (Portion A)	p1																																															
	Piling & Pile Cap Construction (Portion B)	p1																																															
Pits for Mf sediment	Install sheet piles	p1																																															
	Dredging to form the Mf pits	p1																																															
	Redeposition of Mf sediments within the pits	p1																																															
	Remove sheet pile after capping by sandfill	p1																																															
Viaduct at Airport Channel	Piling & Pile Cap Construction (Portion 1)	p2																																															
	Piling & Pile Cap Construction (Portion 2)	p2																																															
	Piling & Pile Cap Construction (Portion 3)	p2																																															
	Piling & Pile Cap Construction (Portion 4)	p2																																															
Total Daily Production Rate																																																	
<b>E. Project Summary</b>																																																	
TM-CLKL North	Dredging	7,200																																															
TM-CLKL South	Filling	16,000																																															
HKBCF	Dredging	64,800																																															
HKBCF	Filling	24,000																																															
HKLR	Dredging	21,600																																															
HKLR	Filling	56,000																																															
Remark: Table E include the quantity for viaduct bored piling works.																																																	

Overall Programme for TM-CLKL + HKBCF + HKLR - Maximum Daily Production Rate (bulked volume, m3/day) (Sequence B)

Figure 1b



Overall Programme for TM-CLKL + HKBCF + HKLR - Daily No. of Plant Trips (Sequence B)

Figure 1c

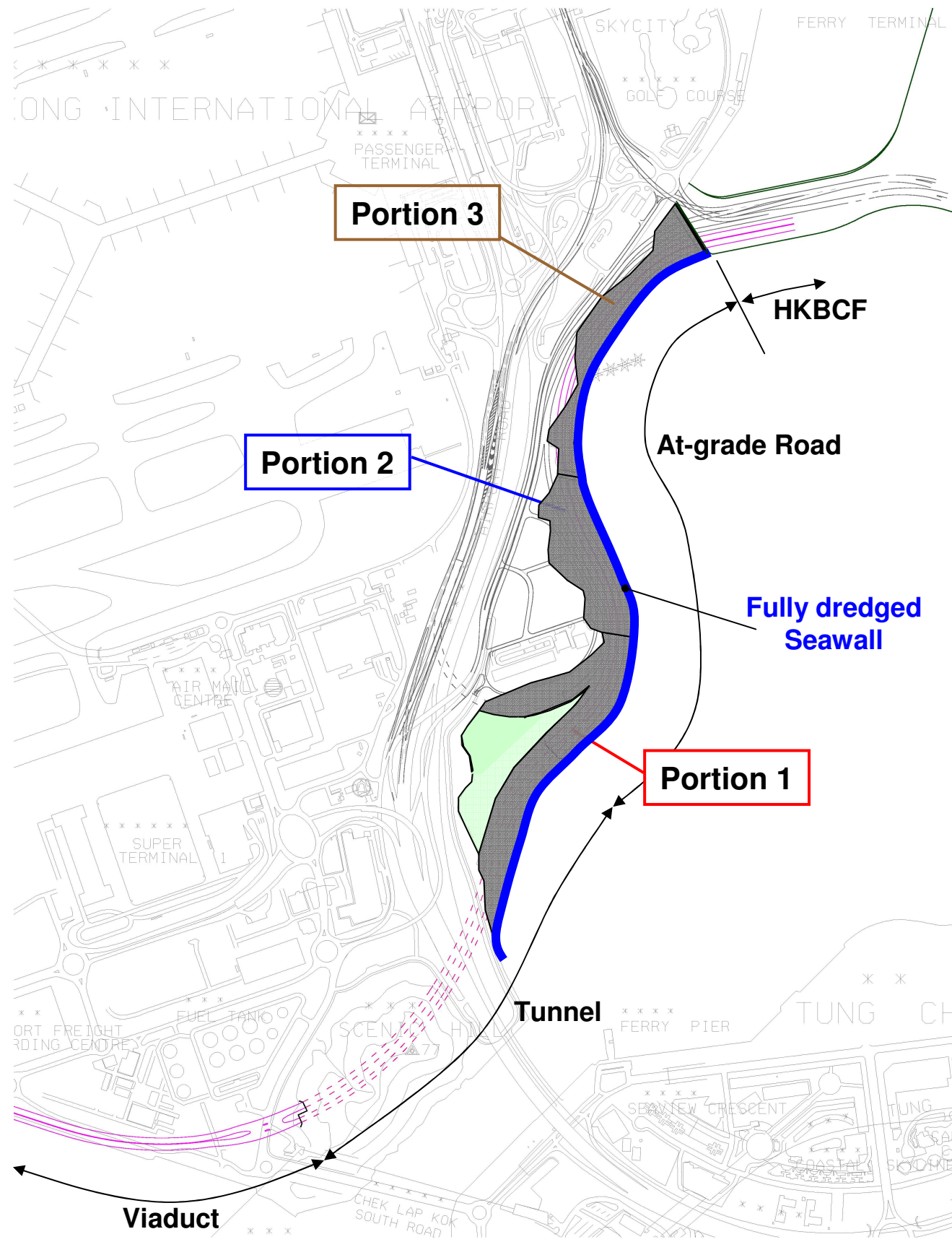




APPENDIX E3

---

**Typical Arrangement of  
HKLR**



Seawall – Fully Dredged

Reclamation:

Portion 1

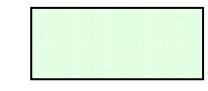
Full-dredged at seawall, tunnel area and mud pit to receive Mf sediment  
Non-dredged at other area

Portion 2 - Fully Dredged

Portion 3 - Fully Dredged



Fully dredged

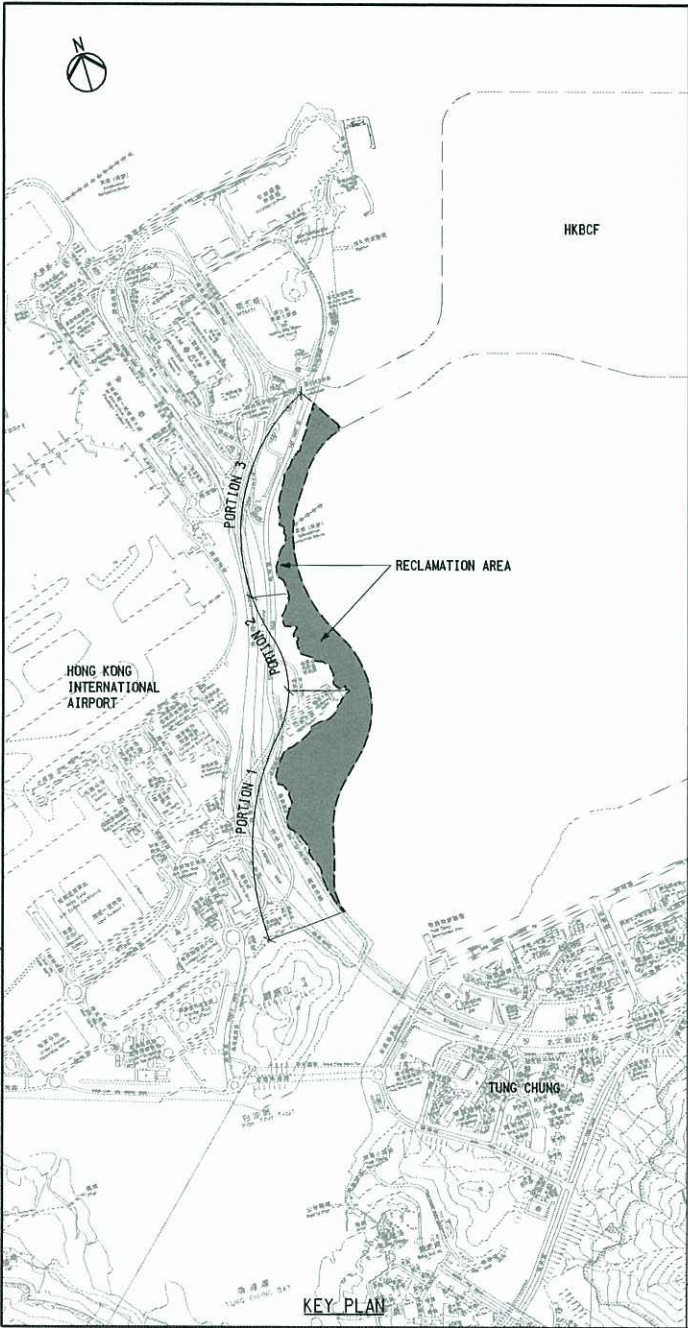


Reclamation area to received dredged Mf sediment within the site

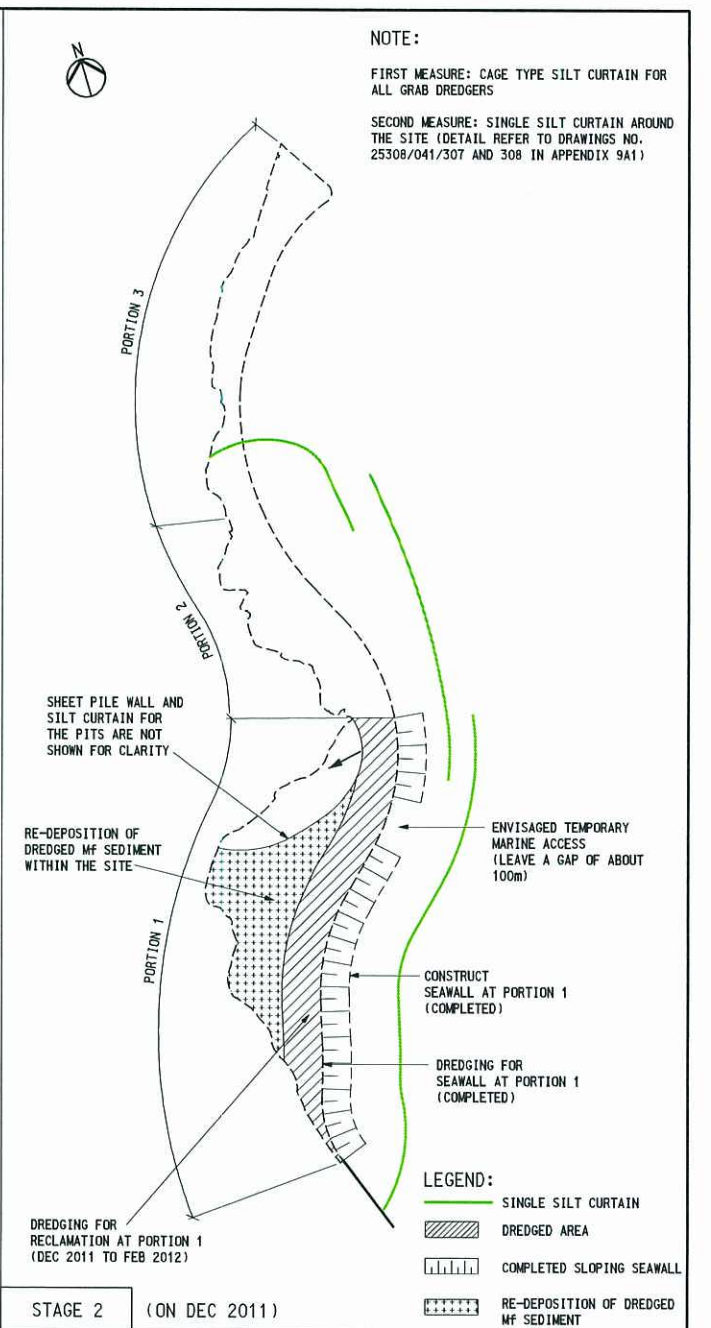
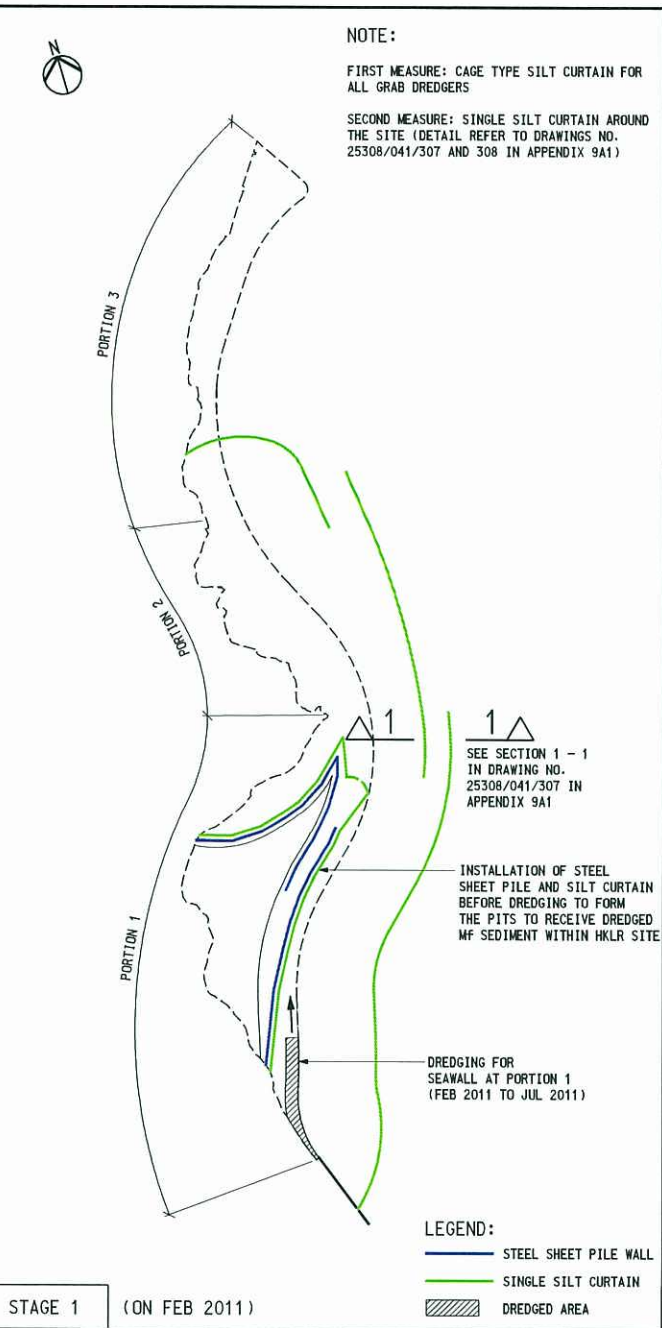


Activities	Year 2010				Year 2011					Year 2012					Year 2013					Year 2014					Year 2015																											
	A	S	O	N	D	J	F	M	A	M	J	J	A	S	O	N	D	J	F	M	A	M	J	J	A	S	O	N	D	J	F	M	A	M	J	J	A	S	O	N	D	J	F	M	A	M	J	J	A	S	O	N
<b>Hong Kong Link Road</b>																																																				
Portion 1	Mobilisation and preparation																																																			
	Seawall dredging																																																			
	Seawall filling																																																			
	Reclamation dredging																																																			
	Reclamation filling																																																			
Portion 2 & 3	Dredging for seawall and reclamation																																																			
	Filling for seawall and reclamation																																																			
Viaduct in western sea	Piling & Pile Cap Construction (Portion A)																																																			
	Piling & Pile Cap Construction (Portion B)																																																			
	Piling & Pile Cap Construction (Portion C)																																																			
Pits for Mf sediment	Install sheet piles																																																			
	Dredging to form the Mf pits																																																			
	Redeposition of Mf sediments within the pits																																																			
	Remove sheet piles after capping by sandfill																																																			
Viaduct at Airport Channel	Piling & Pile Cap Construction (Portion 1)																																																			
	Piling & Pile Cap Construction (Portion 2)																																																			
	Piling & Pile Cap Construction (Portion 3)																																																			
	Piling & Pile Cap Construction (Portion 4)																																																			
	Piling & Pile Cap Construction (Portion 5)																																																			

Remarks:  Dredging activity  
 Filling activity  
 Other activities



KEY PLAN



5/11/2009  
 Printed by :  
 File name : J:\25308\HKBRC\CD\1\45451\CONSTRUCTION\25308-54-1-308.dwg  
 File size : 11,463,360 bytes

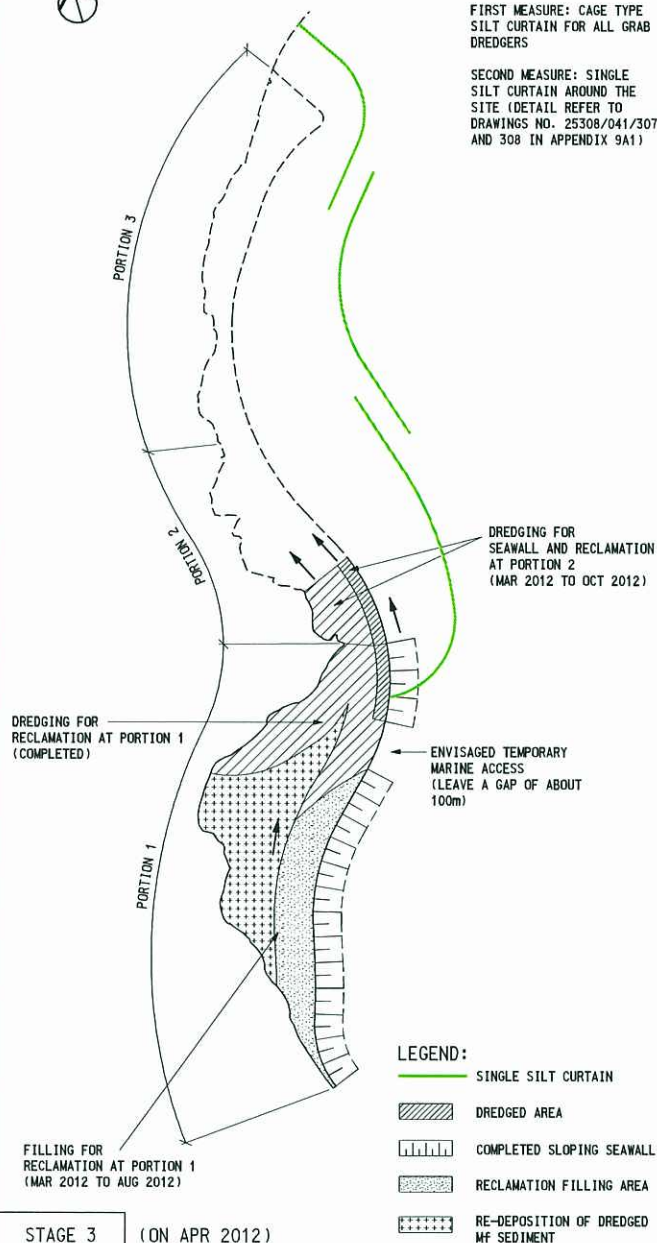
Drawn	AL	Date	02/09	Drawing No.	25308/041/305
Checked	SK	Approved	AK		
A FIRST ISSUE		02/09	Scale	1:10000 on A3	Status
Rev.	Description	Date			PRELIMINARY
					Rev. A



NOTE:

FIRST MEASURE: CAGE TYPE SILT CURTAIN FOR ALL GRAB DREDGERS

SECOND MEASURE: SINGLE SILT CURTAIN AROUND THE SITE (DETAIL REFER TO DRAWINGS NO. 25308/041/307 AND 308 IN APPENDIX 9A1)



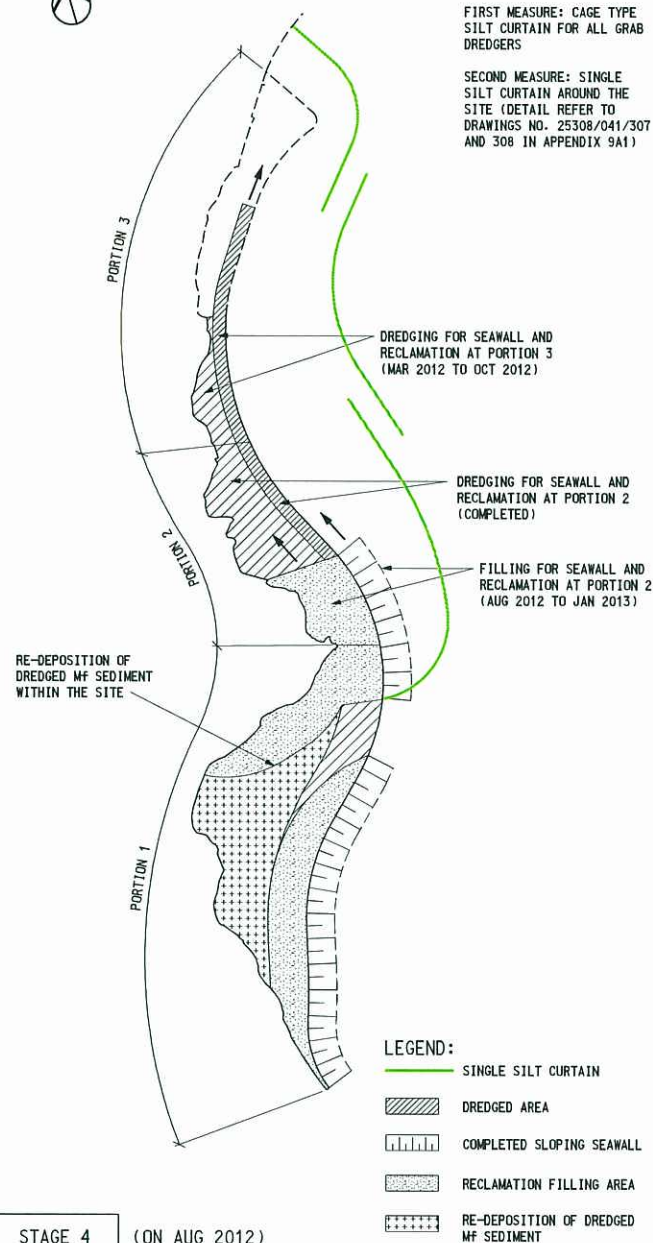
STAGE 3 (ON APR 2012)



NOTE:

FIRST MEASURE: CAGE TYPE SILT CURTAIN FOR ALL GRAB DREDGERS

SECOND MEASURE: SINGLE SILT CURTAIN AROUND THE SITE (DETAIL REFER TO DRAWINGS NO. 25308/041/307 AND 308 IN APPENDIX 9A1)



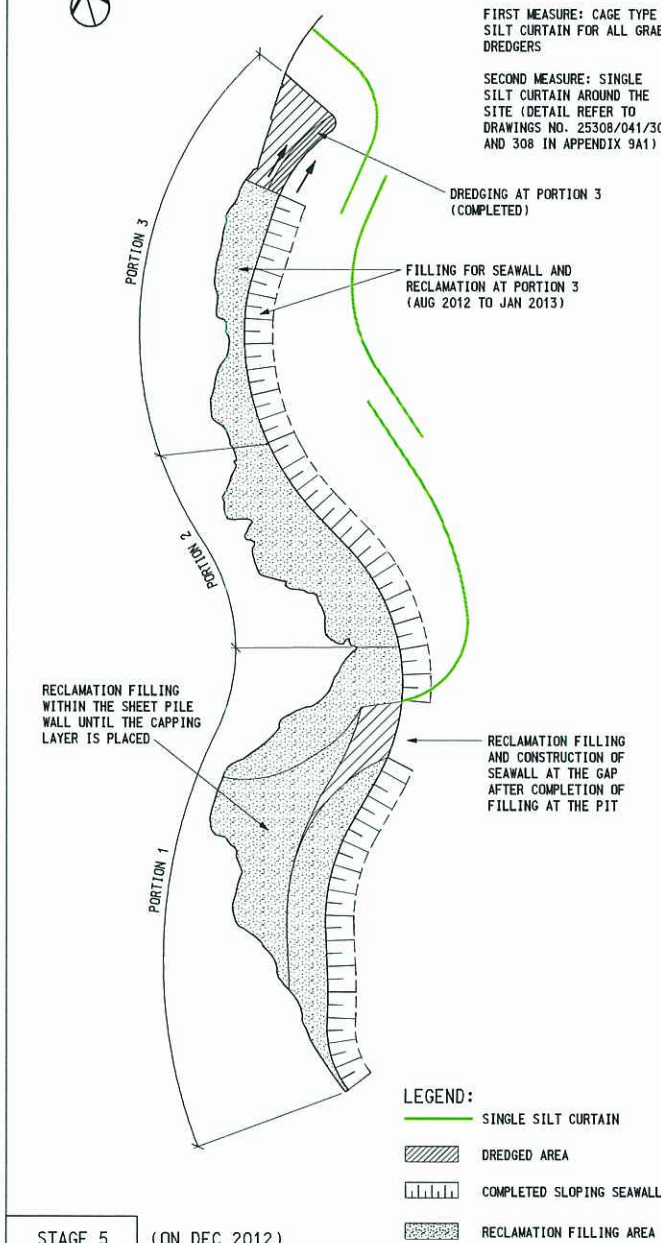
STAGE 4 (ON AUG 2012)



NOTE:

FIRST MEASURE: CAGE TYPE SILT CURTAIN FOR ALL GRAB DREDGERS

SECOND MEASURE: SINGLE SILT CURTAIN AROUND THE SITE (DETAIL REFER TO DRAWINGS NO. 25308/041/307 AND 308 IN APPENDIX 9A1)



STAGE 5 (ON DEC 2012)

Printed by : 5/6/2009 5:06:11 PM  
File name : J:\25308\BAP\AC\1\1\45\ET\CH\BRI\CON\1\041\308-56-41-308.dwg  
File path : J:\25308\BAP\AC\1\1\45\ET\CH\BRI\CON\1\041\308-56-41-308.dwg



ARUP  
Ove Arup & Partners  
Hong Kong Limited

Job Title  
Agreement No. CE 14/2008 (CE)  
Hong Kong-Zhuhai-Macao Bridge Hong Kong  
Boundary Crossing Facilities - Investigation

Drawing Title  
ANTICIPATED CONSTRUCTION  
SEQUENCE OF HKLR

Drawn	AL	Date	02/09	Drawing No.	25308/041/306
Checked	SK	Approved	AK		
Rev	A	DESCRIPTION	02/09	Scale	1:10000 on A3
				Status	PRELIMINARY
				Rev.	A