

APPENDIX 6F

---

**Separation Distance  
between NSRs and  
Notional Construction  
Noise Sources**

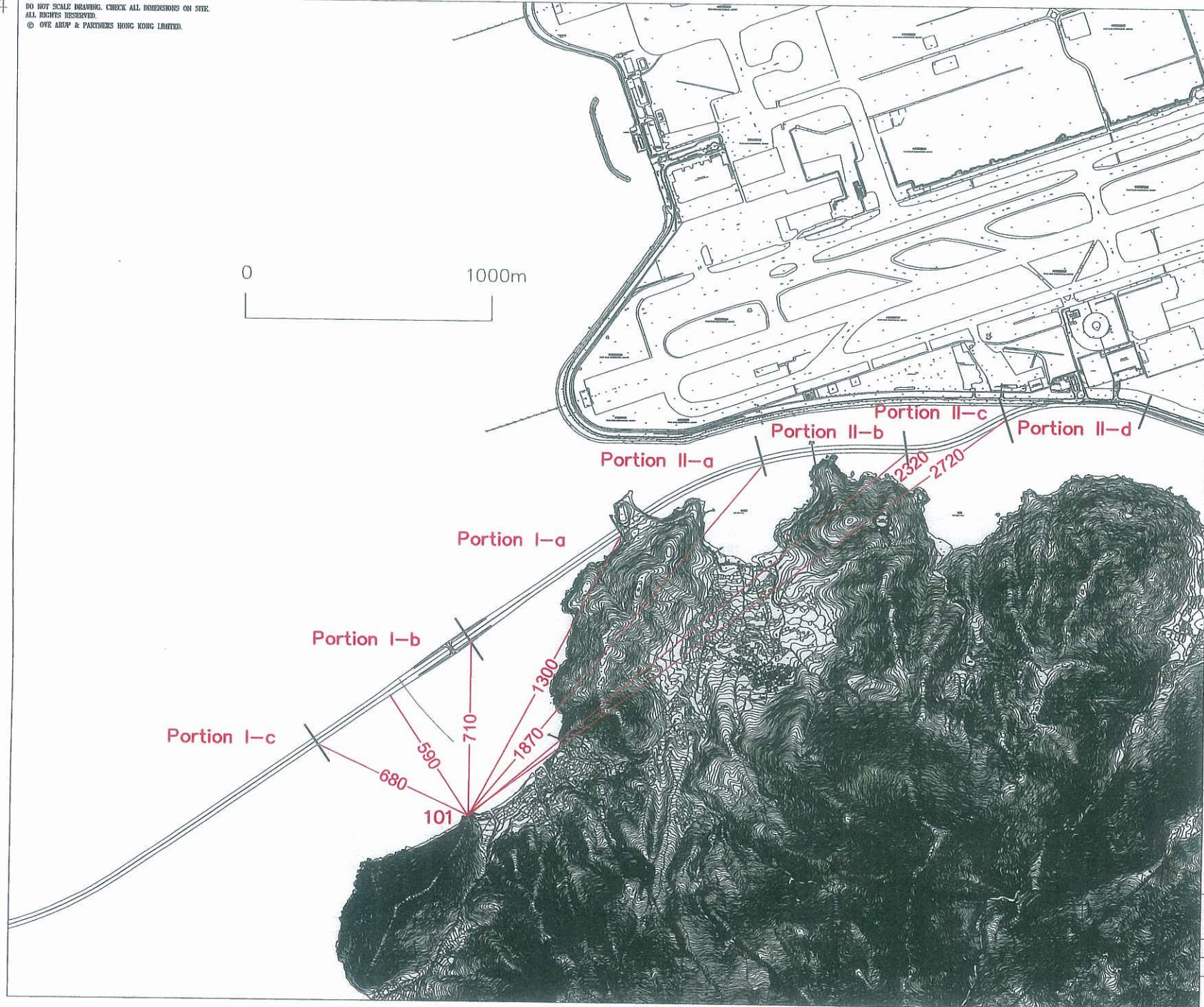
Table 1 - Notional Distance from Construction Sites to NSRs, m

NSRs	Work Site																					
	S1	S2	S3	S4	S5	S6	S7	S8	S9	S10	S11	S12	S13	S14	S15	S16	S17	S18	S19	S20	S21	S22
101 - San Shek Wan		710	590	680		1300	1870	2320	2720													
102 - San Shek Wan		560	560	990		890	1400	1840	2240	2720												
103 - Sha Lo Wan Chung Hau	2500	390	1050	1790		260	410	890	1310	1830												
104 - Sha Lo Wan Chung Hau	2080	810	1540	2280	2950	200	90	400	820	1370		2940								2640		
105 - Tin Sum	480	2520			1230	1970	1420	1090	690	400	1690	1230	1710	1770	1840	2030	2580	2690	900		1790	
106 - Ma Wan Chung	1090				720		2900	2560	2080	720	1020	750	1090	1160	1260	1650	2220	2420	520		1460	
113 - Tung Chung Crescent	1310				750			2860	2340	770	780	710	860	920	1000	1400	1920	2140	770		1260	
126 - Seaview Crescent	1530				910				2540	920	560	600	620	640	670	1010	1440	1660	1050	2510	970	
136 - LeBleu	1930				1300				2930	1320	910	950	910	910	960	1210	1600	1720	1440	2350	1240	2970
147 - Caribbean Coast	2590				1970					1980	1550	1600	1540	1520	1550	1500	1580	1760	2110	2070	1790	2720
149 - Ho Yu College (Sik Sik Yuen)	2330				1710					1720	1290	1350	1280	1270	1300	1290	1430	1620	1850	2190	1560	2820

Table 2 - Distance Attenuation and Facade Correction, dB(A)

NSRs	Work Site																					
	S1	S2	S3	S4	S5	S6	S7	S8	S9	S10	S11	S12	S13	S14	S15	S16	S17	S18	S19	S20	S21	S22
101 - San Shek Wan		-62	-60	-62		-67	-70	-72	-74													
102 - San Shek Wan		-60	-60	-65		-64	-68	-70	-72	-74												
103 - Sha Lo Wan Chung Hau	-73	-57	-65	-70		-63	-57	-64	-67	-70												
104 - Sha Lo Wan Chung Hau	-71	-63	-69	-72	-74	-51	-44	-57	-63	-68		-74								-73		
105 - Tin Sum	-59	-73			-67	-71	-68	-66	-62	-57	-67	-70	-70	-70	-71	-73	-74	-64			-70	
106 - Ma Wan Chung	-66				-62		-74	-73	-71	-62	-65	-63	-66	-66	-67	-69	-72	-73	-61		-68	
113 - Tung Chung Crescent	-67				-63		-74	-72	-63	-63	-62	-64	-64	-65	-68	-71	-72	-63			-67	
126 - Seaview Crescent	-69				-64			-73	-64	-60	-61	-61	-61	-62	-65	-68	-69	-65	-73	-65		
136 - LeBleu	-71				-67			-74	-67	-64	-65	-64	-64	-65	-67	-69	-70	-68	-72	-67	-74	
147 - Caribbean Coast	-73				-71				-71	-69	-69	-69	-69	-69	-69	-69	-69	-70	-71	-71	-70	-74
149 - Ho Yu College (Sik Sik Yuen)	-72				-70				-70	-67	-68	-67	-67	-67	-67	-67	-68	-69	-70	-72	-69	-74

DO NOT SCALE DRAWING. CHECK ALL DIMENSIONS ON SITE.  
 ALL RIGHTS RESERVED.  
 © OVE ARUP & PARTNERS HONG KONG LIMITED.



Mark	Date	By	Rev.
Drawing Status			

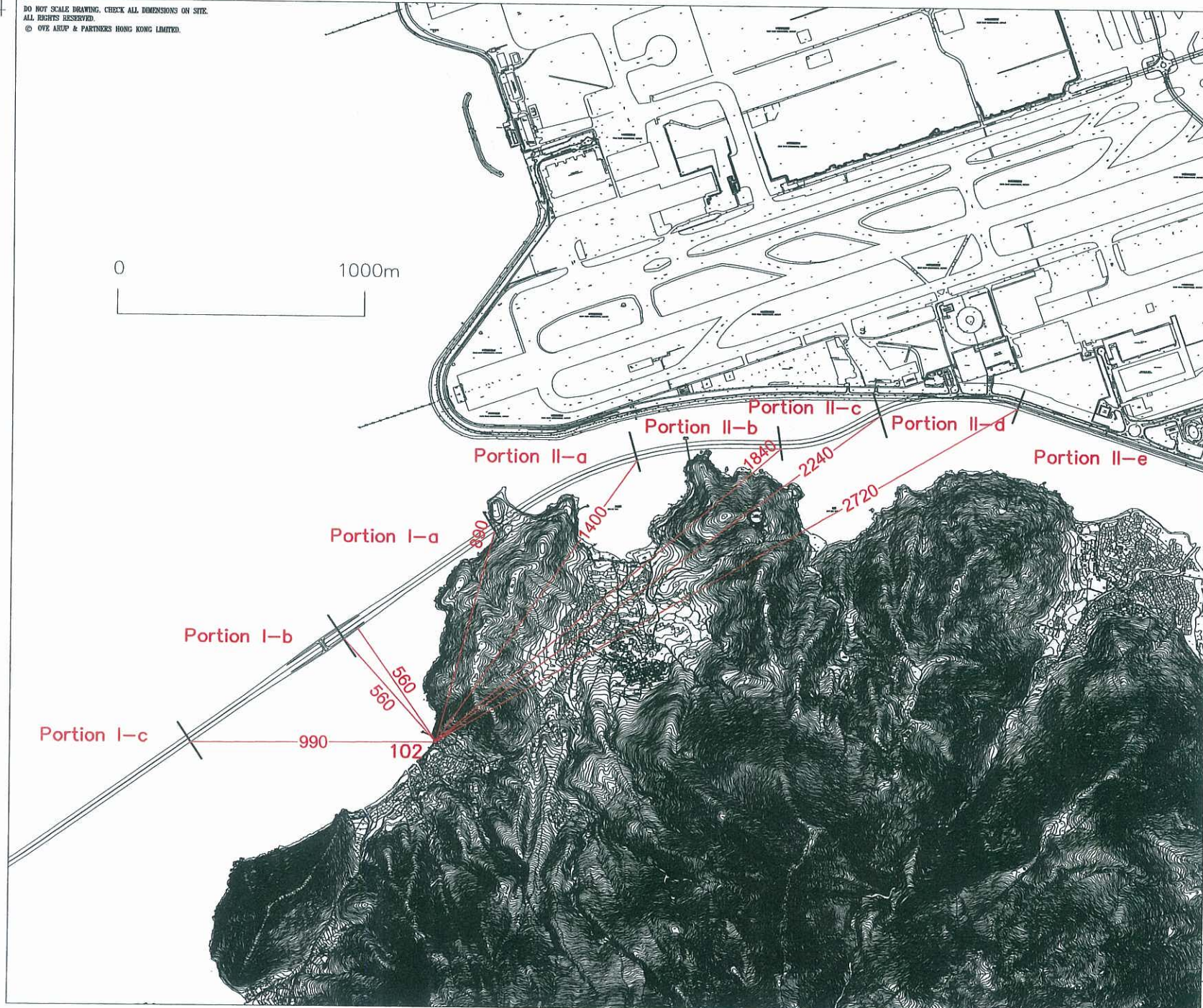
Job Title  
 Kong-Zuhai-Macao Bridge  
 Hong Kong Boundary  
 Crossing Facilities  
 - Investigation

Drawing Title  
 Separation Distance Between  
 NSR 101 and Notional  
 Source Position

**ARUP** Ove Arup & Partners  
 Hong Kong Limited

Scale	N1S @A4				
Dwn. EL	Date	Chd. FC	Passed ST	ST	
	01/05/09				
Job No.	Drawing No.	Rev.			
25308-50	EN/1006/A	0			

DO NOT SCALE DRAWING. CHECK ALL DIMENSIONS ON SITE.  
 ALL RIGHTS RESERVED.  
 © OVE ARUP & PARTNERS HONG KONG LIMITED.



Mark	Date	By	Rev.

Drawing Status

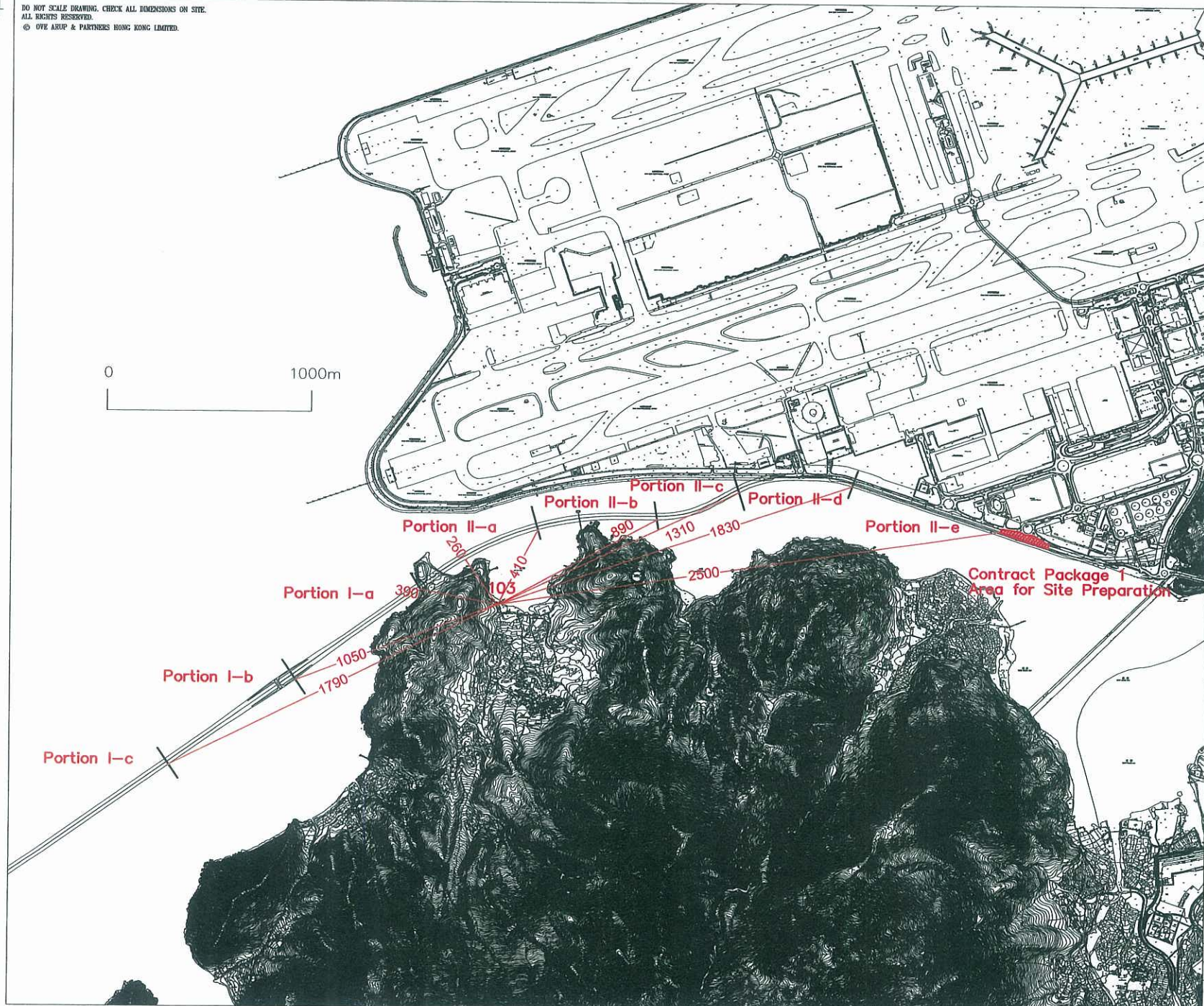
Job Title  
 Kong-Zuhai-Macao Bridge  
 Hong Kong Boundary  
 Crossing Facilities  
 - Investigation

Drawing Title  
 Separation Distance Between  
 NSR 102 and Notional  
 Source Position

**ARUP** Ove Arup & Partners  
 Hong Kong Limited

Scale		NTS @A4			
Dwn. EL	Date	Chd. FC	Passed ST	ST	
	01/05/09				
Job No.	Drawing No.	Rev.			
25308-50	EN/1007/A	0			

DO NOT SCALE DRAWING. CHECK ALL DIMENSIONS ON SITE.  
 ALL RIGHTS RESERVED.  
 © OVE ARUP & PARTNERS HONG KONG LIMITED.



Mark	Date	By	Rev.

Drawing Status

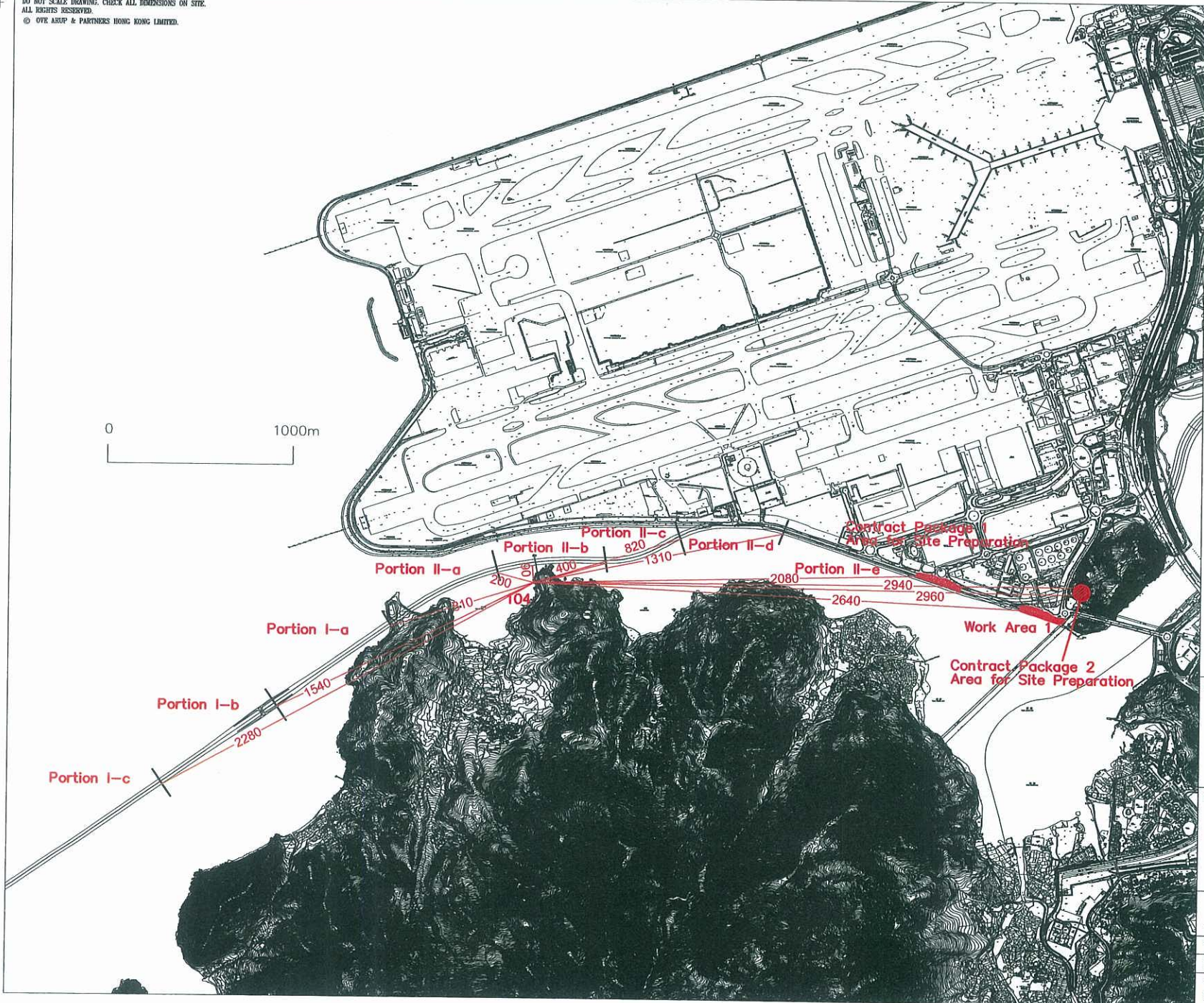
Job Title  
 Kong-Zuhai-Macao Bridge  
 Hong Kong Boundary  
 Crossing Facilities  
 - Investigation

Drawing Title  
 Separation Distance Between  
 NSR 103 and Notional  
 Source Position

**ARUP** Ove Arup & Partners  
 Hong Kong Limited

Scale NTS @A4						
Drn.	EL	Date	Chd.	FC	Passed	ST
		01/05/09				
Job No.	Drawing No.		Rev.			
25308-50	EN/100B/A		0			

DO NOT SCALE DRAWING. CHECK ALL DIMENSIONS ON SITE.  
 ALL RIGHTS RESERVED.  
 © OVE ARUP & PARTNERS HONG KONG LIMITED.



Mark	Date	By	Rev.

Drawing Status

Job Title  
 Kong-Zuhai-Macao Bridge  
 Hong Kong Boundary  
 Crossing Facilities  
 - Investigation

Drawing Title  
 Separation Distance Between  
 NSR 104 and Notional  
 Source Position

**ARUP** Ove Arup & Partners  
 Hong Kong Limited

Scale	NTS @A4				
Dwn. EL	Date	Chd. FC	FC	Passed ST	ST
	01/05/09				
Job No.	Drawing No.	Rev.			
25308-50	EN/1009/A	0			

DO NOT SCALE DRAWING. CHECK ALL DIMENSIONS ON SITE.  
 ALL RIGHTS RESERVED.  
 © OVE ARUP & PARTNERS HONG KONG LIMITED.



**Legend**

- Tunnel Construction at Airport Road
- Tunnel Construction under Airport Express line

Mark	Date	By	Rev.

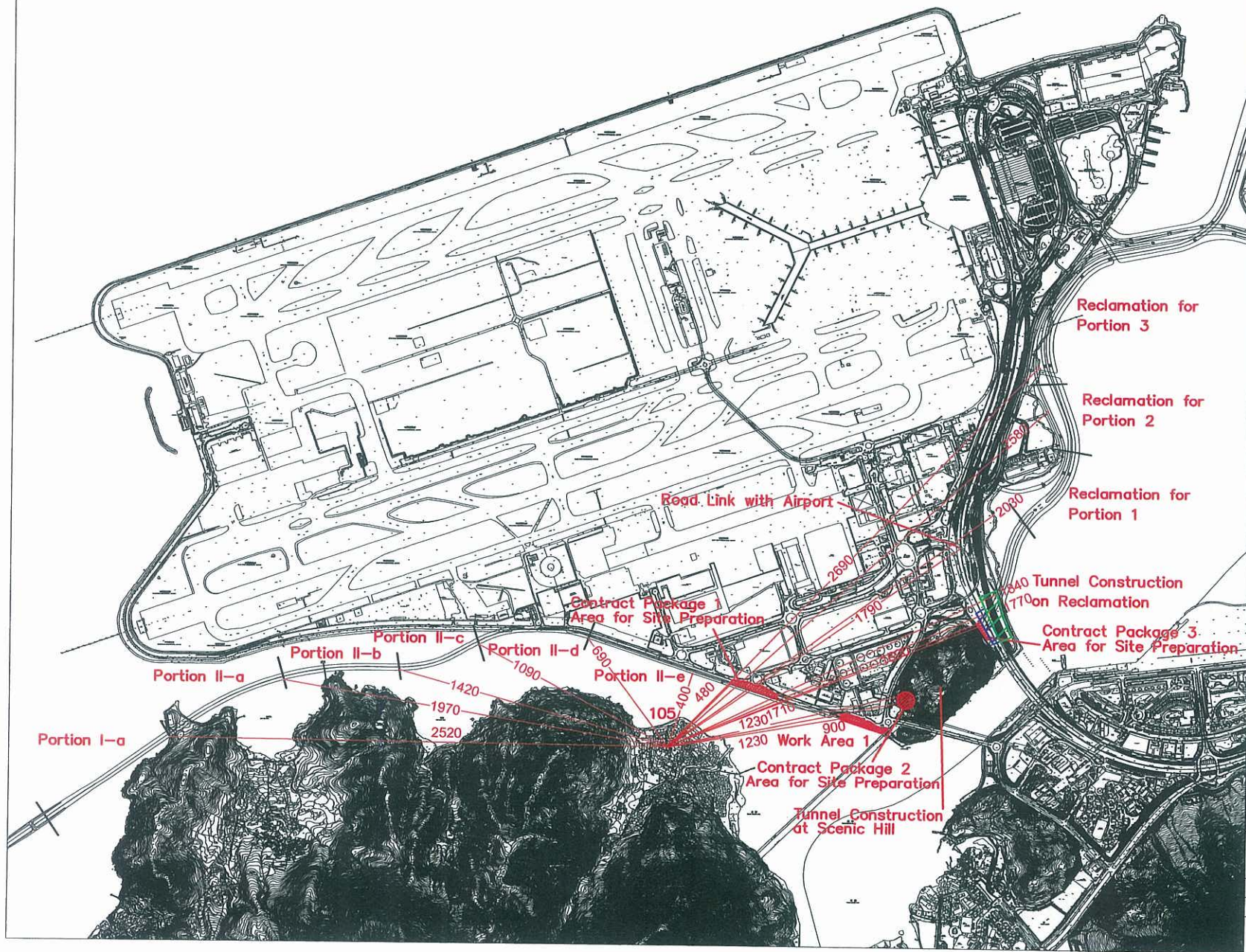
Drawing Status

Job Title  
 Kong-Zuhai-Macao Bridge  
 Hong Kong Boundary  
 Crossing Facilities  
 - Investigation

Drawing Title  
 Separation Distance Between  
 NSR 105 and Notional  
 Source Position

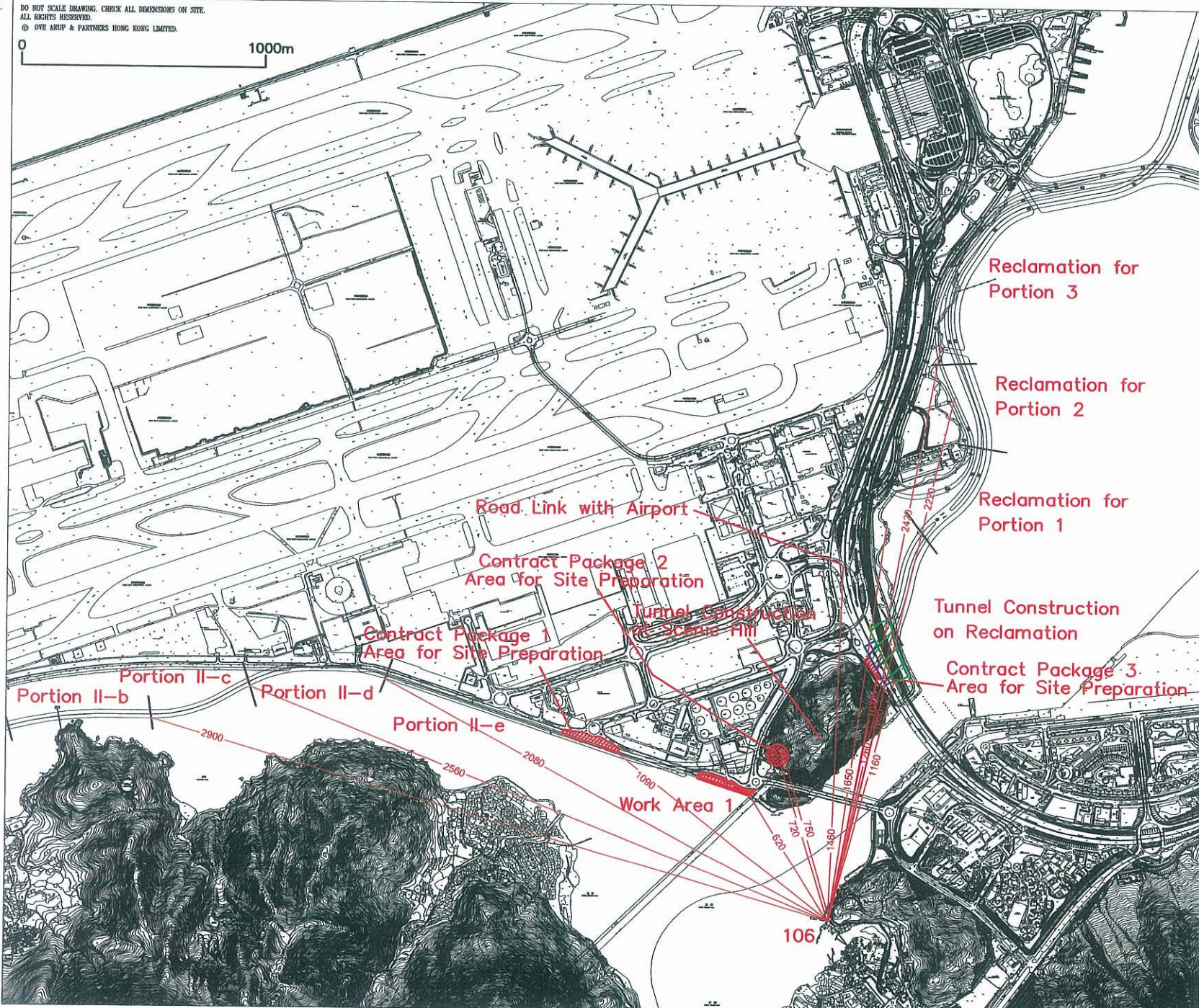
**ARUP** Ove Arup & Partners  
 Hong Kong Limited

Scale		NTS @A4			
Drn.	EL	Date	Chd.	FC	Passed ST
		01/05/09	FC	FC	ST
Job No.		Drawing No.		Rev.	
25308-50		EN/1010/A		0	



DO NOT SCALE DRAWING. CHECK ALL DIMENSIONS ON SITE.  
ALL RIGHTS RESERVED.  
© OVE ARUP & PARTNERS HONG KONG LIMITED.

0 1000m



**Legend**

- ▨ Tunnel Construction at Airport Road
- ▨ Tunnel Construction under Airport Express line

Mark	Date	By	Rev.

Drawing Status

Job Title  
Kong-Zuhai-Macao Bridge  
Hong Kong Boundary  
Crossing Facilities  
- Investigation

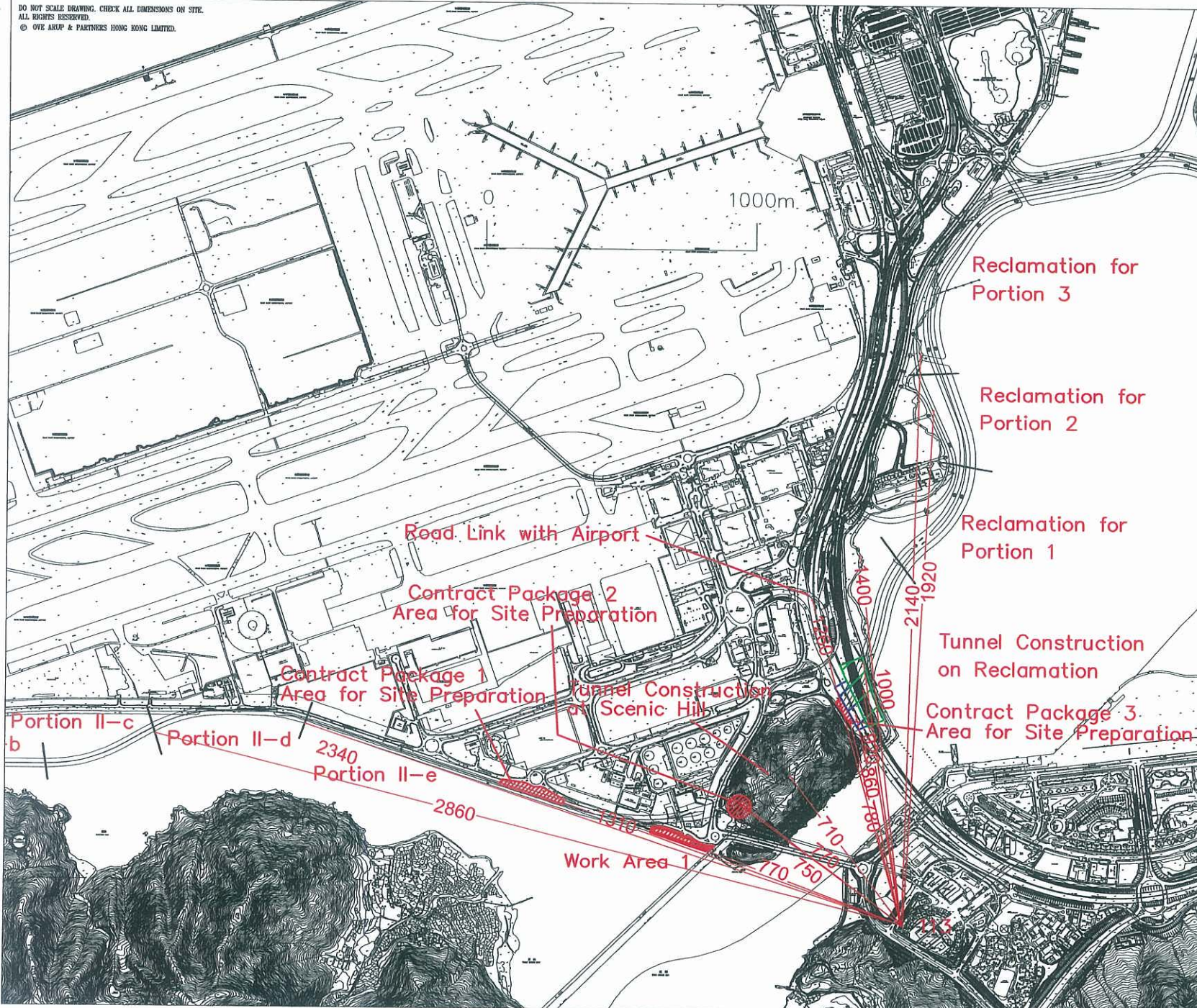
Drawing Title  
Separation Distance Between  
NSR 106 and Notional  
Source Position

**ARUP** Ove Arup & Partners  
Hong Kong Limited

Scale	NTS @A4			
Dwn. EL	Date	Chd. FC	Planned ST	ST
	01/05/09			
Job No.	Drawing No.	Rev.		
25308-50	EN/1011/A	0		



DO NOT SCALE DRAWING. CHECK ALL DIMENSIONS ON SITE.  
 ALL RIGHTS RESERVED.  
 © OVE ARUP & PARTNERS HONG KONG LIMITED.



Legend

- ▨ Tunnel Construction at Airport Road
- ▨ Tunnel Construction under Airport Express line


Mark Date By Rev.

Drawing Status

Job Title

Kong-Zuhai-Macao Bridge  
 Hong Kong Boundary  
 Crossing Facilities  
 - Investigation

Drawing Title

Separation Distance Between  
 NSR 113 and Notional  
 Source Position

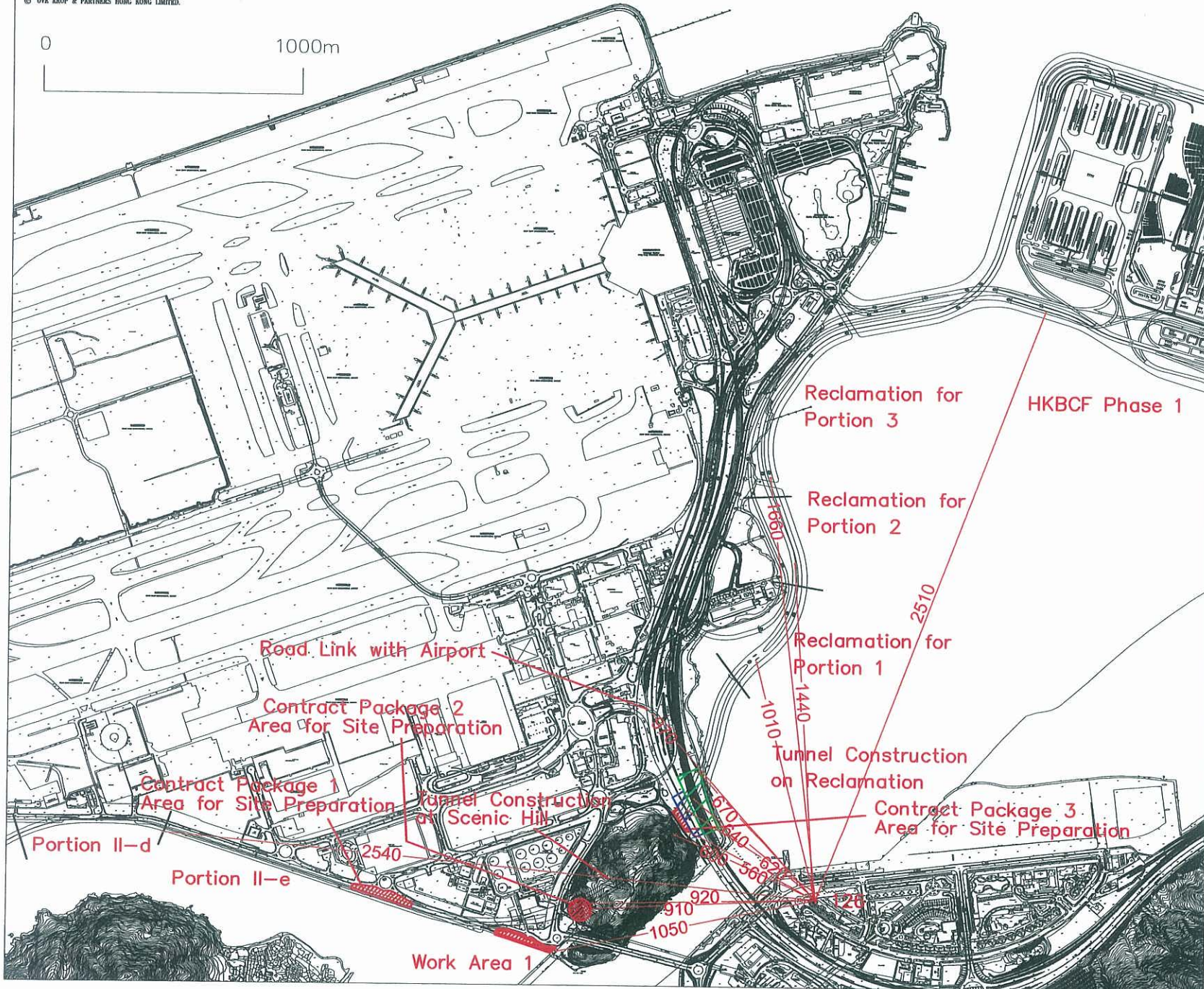
**ARUP** Ove Arup & Partners  
 Hong Kong Limited

Scale NTS @A4

Dwn. EL	Date 01/05/09	Chd. FC	Passed ST
---------	---------------	---------	-----------

Job No. 25308-50	Drawing No. EN/1012/A	Rev. 0
------------------	-----------------------	--------

DO NOT SCALE DRAWING. CHECK ALL DIMENSIONS ON SITE.  
 ALL RIGHTS RESERVED.  
 © OVR ARUP & PARTNERS HONG KONG LIMITED.



**Legend**

- Tunnel Construction at Airport Road
- Tunnel Construction under Airport Express line

Mark	Date	By	Rev.

Drawing Status

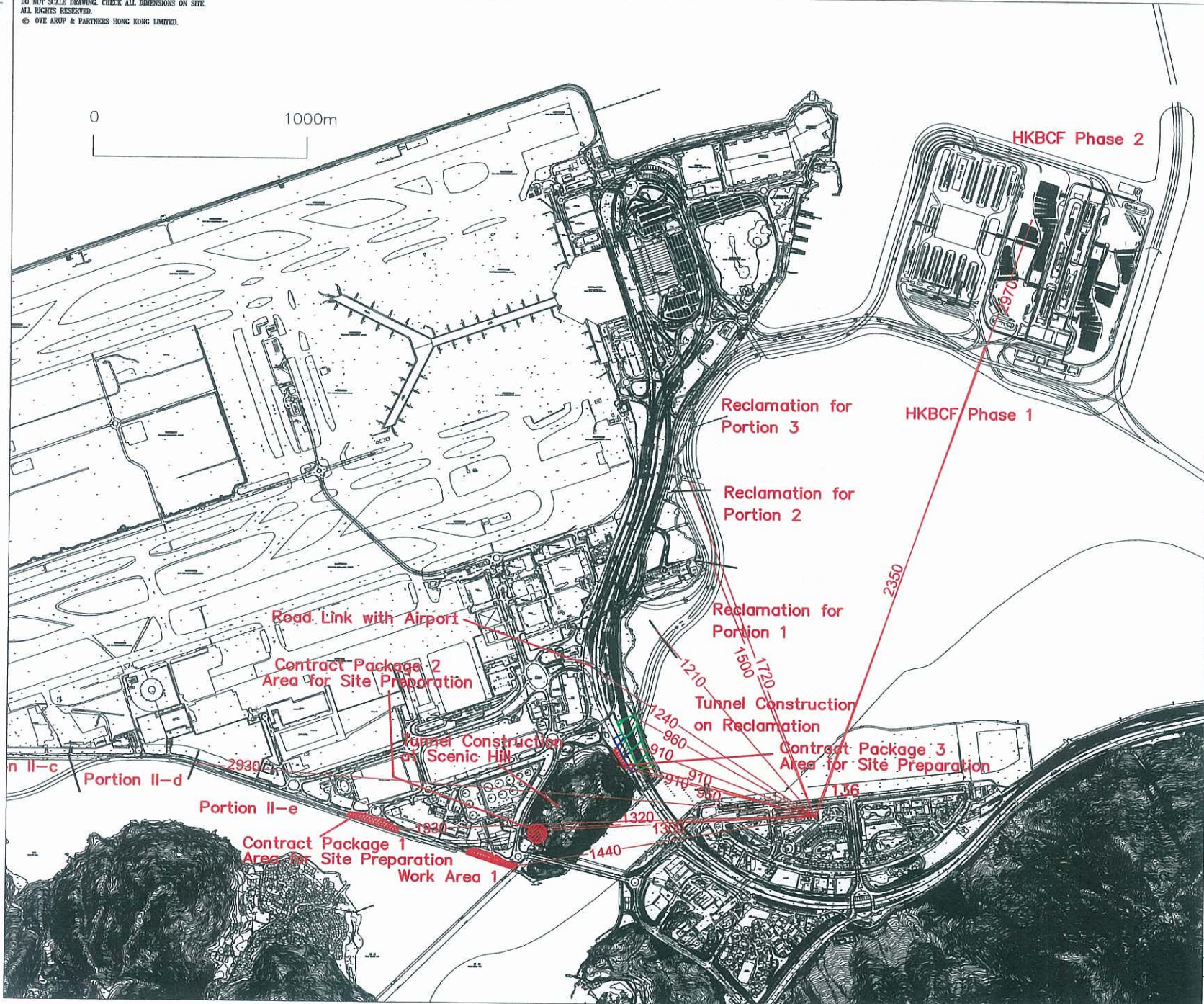
**Job Title**  
 Kong-Zuhai-Macao Bridge  
 Hong Kong Boundary  
 Crossing Facilities  
 - Investigation

**Drawing Title**  
 Separation Distance Between  
 NSR 126 and Notional  
 Source Position

**ARUP** Ove Arup & Partners  
 Hong Kong Limited

Scale	NTS @A4			
Dwn. EL	Date	Chd. FE	FC	Passed ST
25308-50	01/05/09			
Job No.	Drawing No.	Rev.		
25308-50	EN/1013/A	0		

DO NOT SCALE DRAWING. CHECK ALL DIMENSIONS ON SITE.  
 ALL RIGHTS RESERVED.  
 © OVE ARUP & PARTNERS HONG KONG LIMITED.



Legend

- ▨ Tunnel Construction at Airport Road
- ▨ Tunnel Construction under Airport Express line

Mark	Date	By	Rev.

Drawing Status

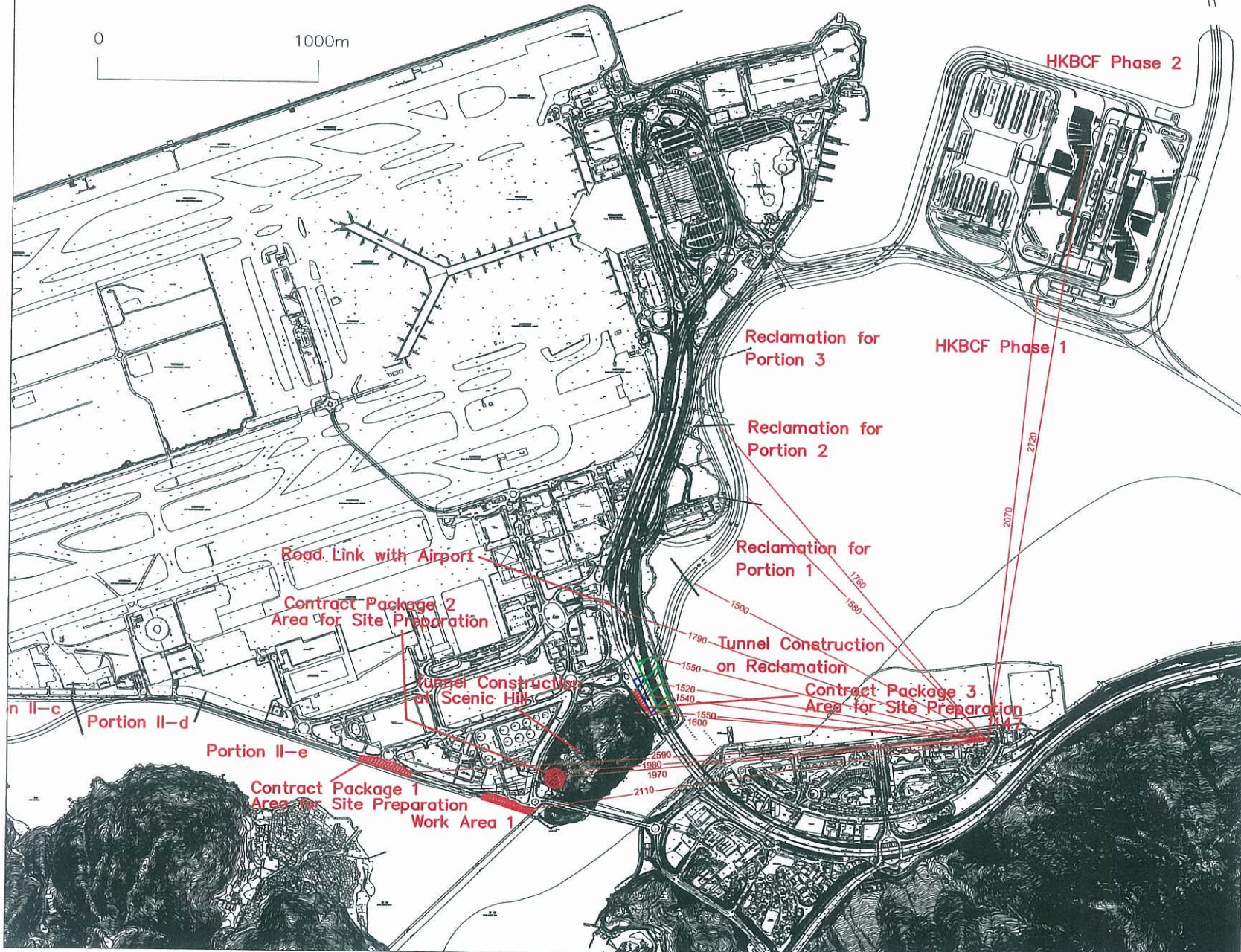
Job Title  
 Kong-Zuhai-Macao Bridge  
 Hong Kong Boundary  
 Crossing Facilities  
 - Investigation

Drawing Title  
 Separation Distance Between  
 NSR 136 and Notional  
 Source Position

**ARUP** Ove Arup & Partners  
 Hong Kong Limited

Scale		NTS @A4		Date		01/05/09		Chd.		FC		Passed		ST	
Drn.	EL	EL	FE	FC	ST	ST	ST	ST	ST	ST	ST	ST	ST	ST	ST
Job No.		25308-50		Drawing No.		EN/1014/A		Rev.		0					

DO NOT SCALE DRAWING. CHECK ALL DIMENSIONS ON SITE.  
 ALL RIGHTS RESERVED.  
 © OVE ARUP & PARTNERS HONG KONG LIMITED.



**Legend**

- Tunnel Construction at Airport Road
- Tunnel Construction under Airport Express line


Mark	Date	By	Rev.

Drawing Status

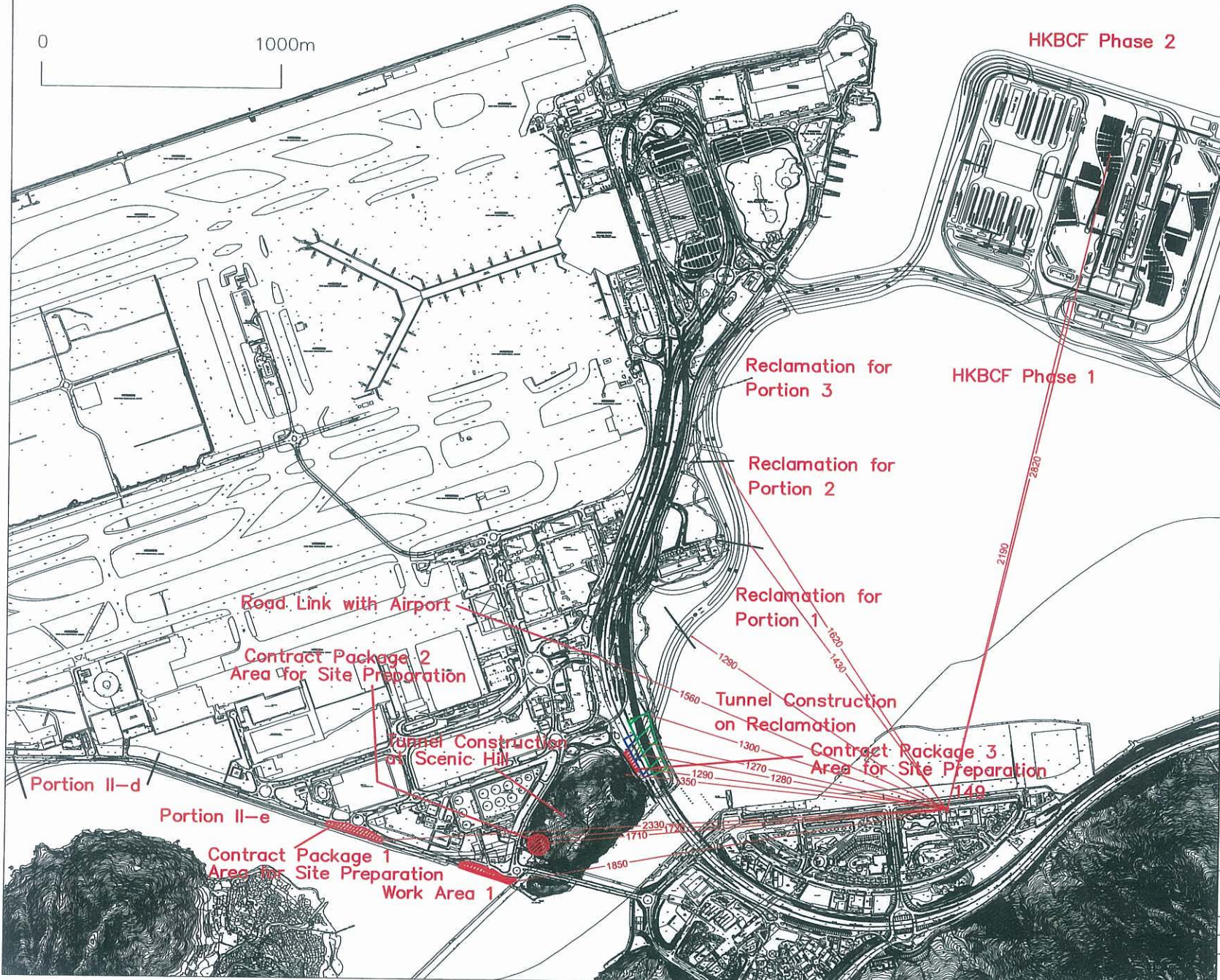
Job Title  
 Kong-Zuhai-Macao Bridge  
 Hong Kong Boundary  
 Crossing Facilities  
 - Investigation

Drawing Title  
 Separation Distance Between  
 NSR 147 and Notional  
 Source Position

**ARUP** Ove Arup & Partners  
 Hong Kong Limited

Scale: NTS @A4	
Dwn. EL	Date: 01/05/09
Chd. FC	Passed ST
Job No. 25308-50	Drawing No. EN/1015/A
	Rev. 0

DO NOT SCALE DRAWING. CHECK ALL DIMENSIONS ON SITE.  
ALL RIGHTS RESERVED.  
© OVE ARUP & PARTNERS HONG KONG LIMITED.



Legend

-  Tunnel Construction at Airport Road
-  Tunnel Construction under Airport Express line

Mark	Date	By	Rev.

Drawing Status

Job Title  
Kong-Zuhai-Macao Bridge  
Hong Kong Boundary  
Crossing Facilities  
- Investigation

Drawing Title  
Separation Distance Between  
NSR 149 and Notional  
Source Position

**ARUP** Ove Arup & Partners  
Hong Kong Limited

Scale	NTS @A4				
Dwn. EL	Date	Chk. FC	Passed ST	ST	
25308-50	01/05/00				
Job No.	Drawing No.	Rev.			
25308-50	EN/1016/A	0			