

APPENDIX 12C

Images

Index

Image 1	The DF-100 side scan sonar
Image 2	Seismic acquisition and printing system
Image 3	Qing scroll painted on silk depicts the actions of the Viceroy Bailing (c. 1748 – 1816)
Image 4	Cannon dating from 1808 discovered during the dredging of the seabed between Chek Lap Kok and Tung Chung for the new airport in 1993
Image 5	Two cannons from Tung Chung Fort dated to 1841 probably used for defence against the British and opium traders
Image 6	Tung Chung Battery
Image 7	French Admiralty for 1856
Image 8	British Admiralty Chart 1899
Image 9	The main components of the seabed stratigraphy
Image 10	Side scan sonar data showing seabed disturbance caused by anchors
Image 11	Seabed disturbance caused by cables
Image 12	Side scan sonar contact SC006
Image 13	Side scan sonar contact SC010
Image 14	Side scan sonar contact SC011

Image 1 The DF-100 used in the side scan sonar survey

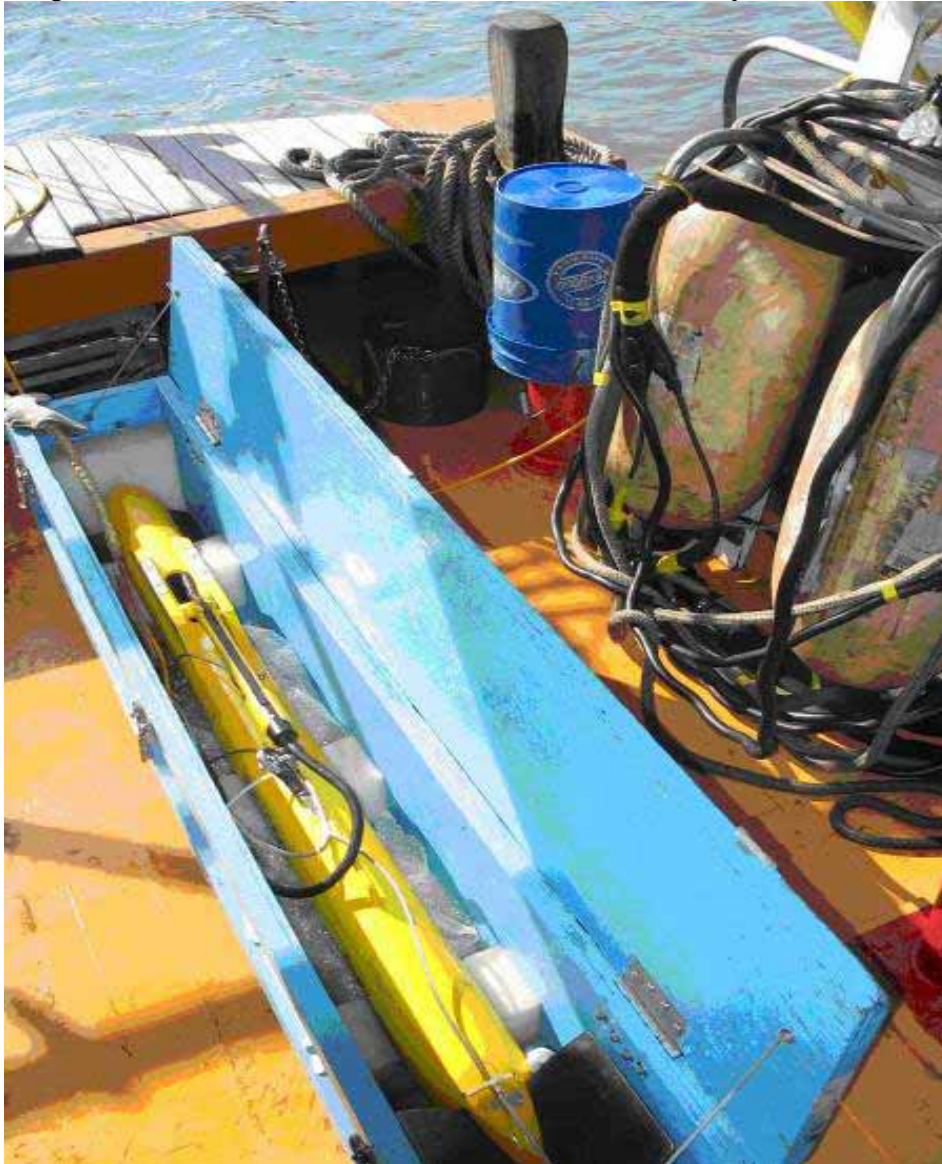


Image 2 Seismic acquisition and printing system

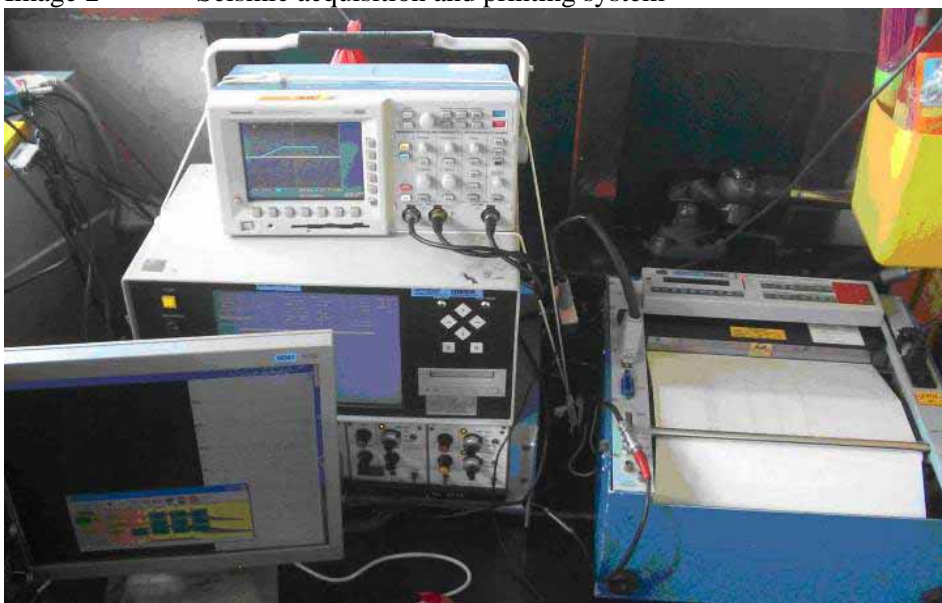


Image 3 Qing scroll painted on silk depicts the actions of the Viceroy Bailing (c.1748-1816) from his assumption to office in 1809 to the successful solution to the piracy problem in the summer of 1810. It is divided into twenty ‘episodes’ and includes the pirate battle at Tung Chung



Image 4 Cannon dating from 1808 discovered during the dredging of the seabed between Chek Lap Kok and Tung Chung for the new airport in 1993

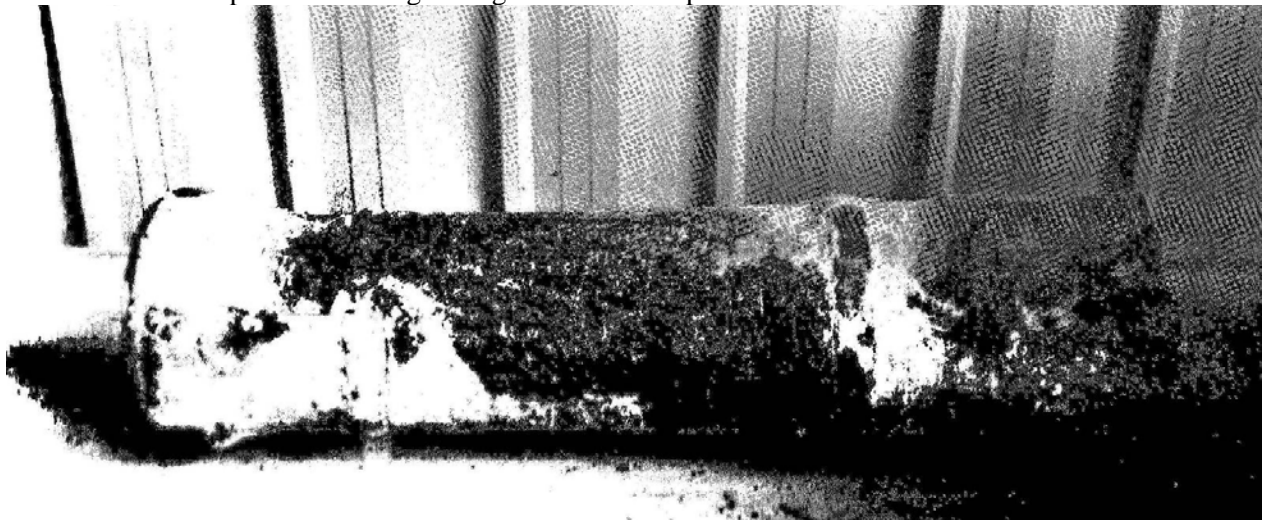


Image 5 Two cannons from Tung Chung Fort dated to 1841 probably used for defence against the British and the opium traders.



Image 6 Tung Chung Battery



Image 7 French Admiralty for 1856

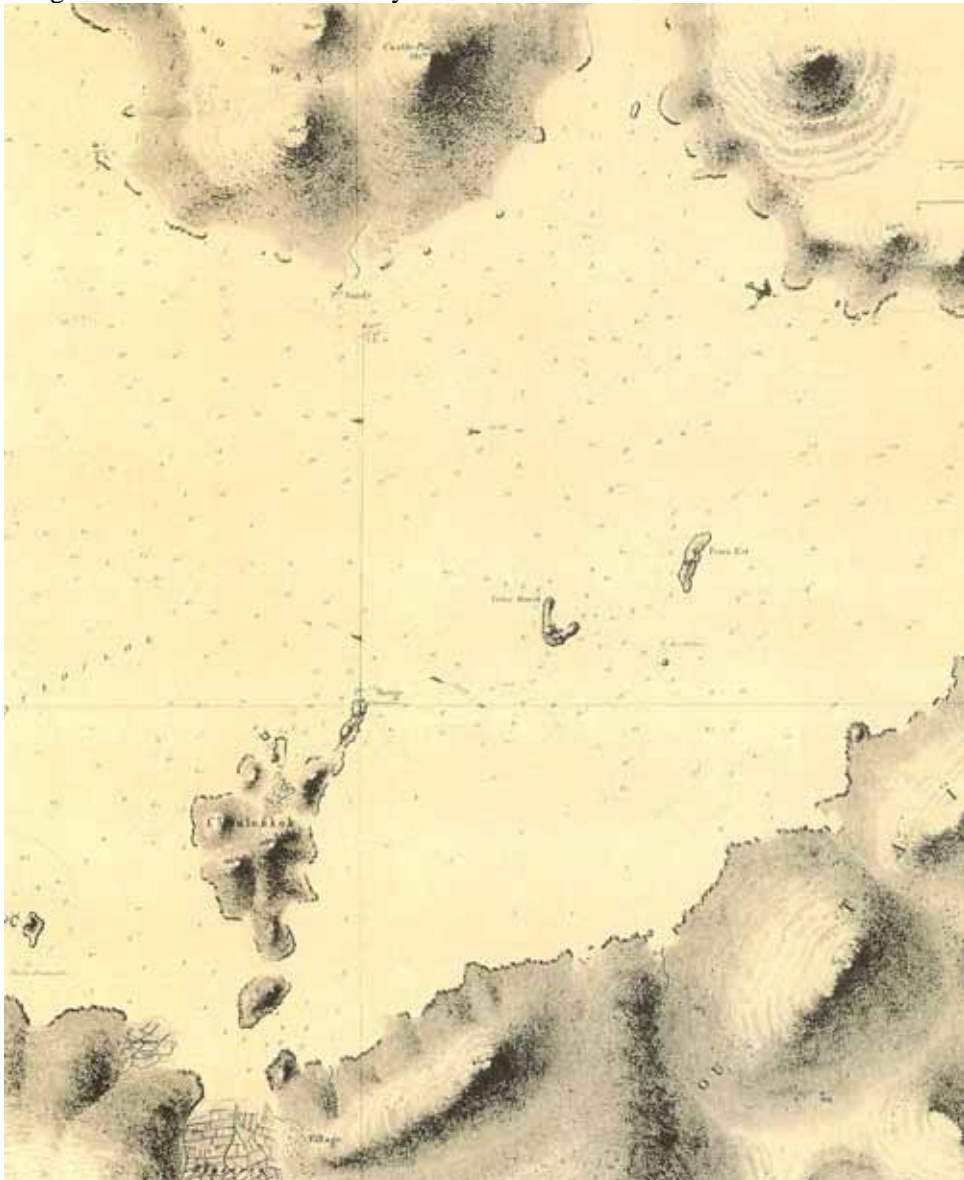


Image 8 British Admiralty Chart 1899

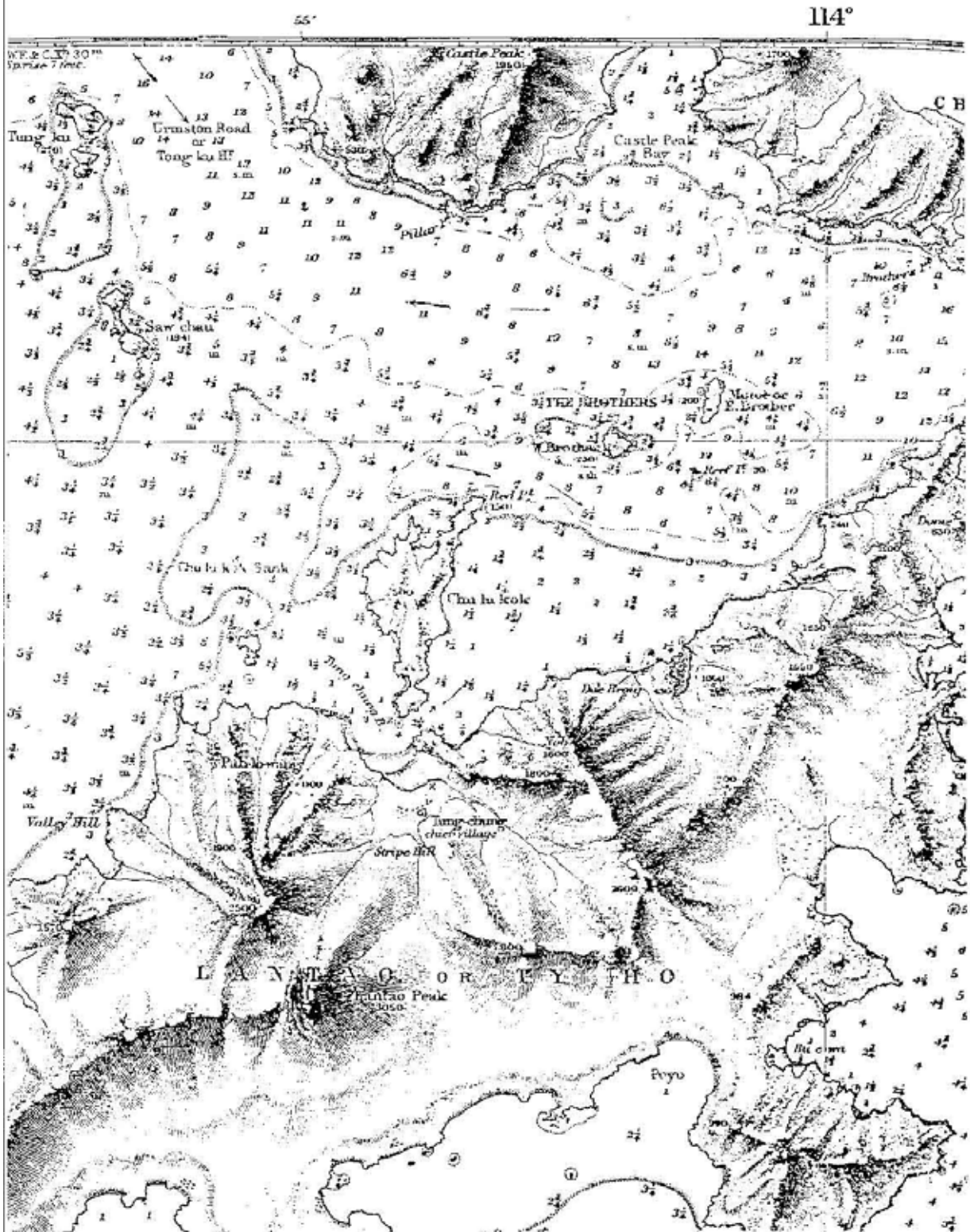


Image 9 The main components of the seabed stratigraphy

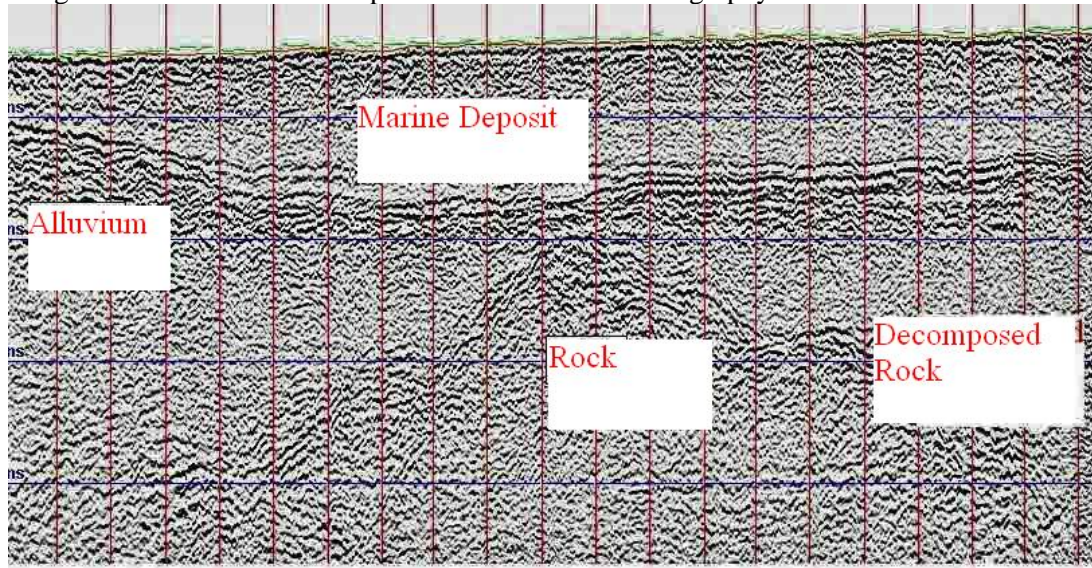


Image 10 Side scan sonar data showing seabed disturbance caused by anchors

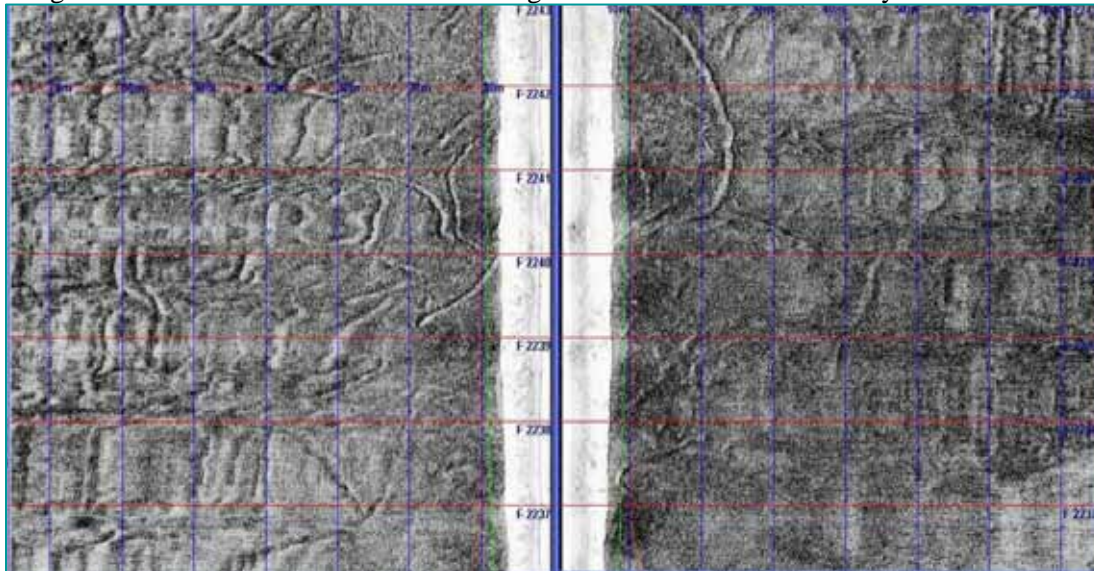


Image 11 Seabed disturbance caused by cables

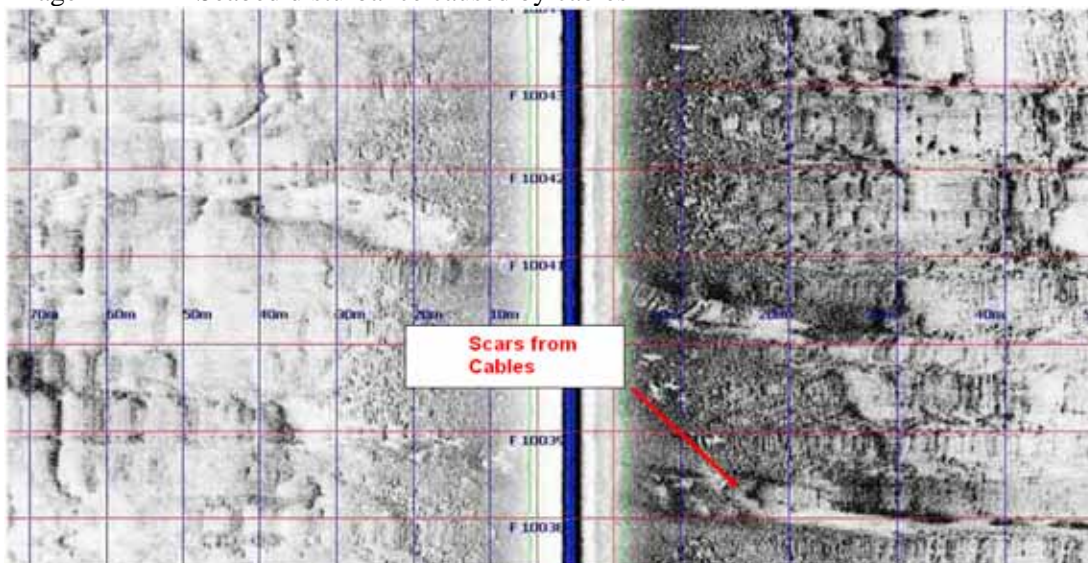


Image 12 Side scan sonar contact SC006

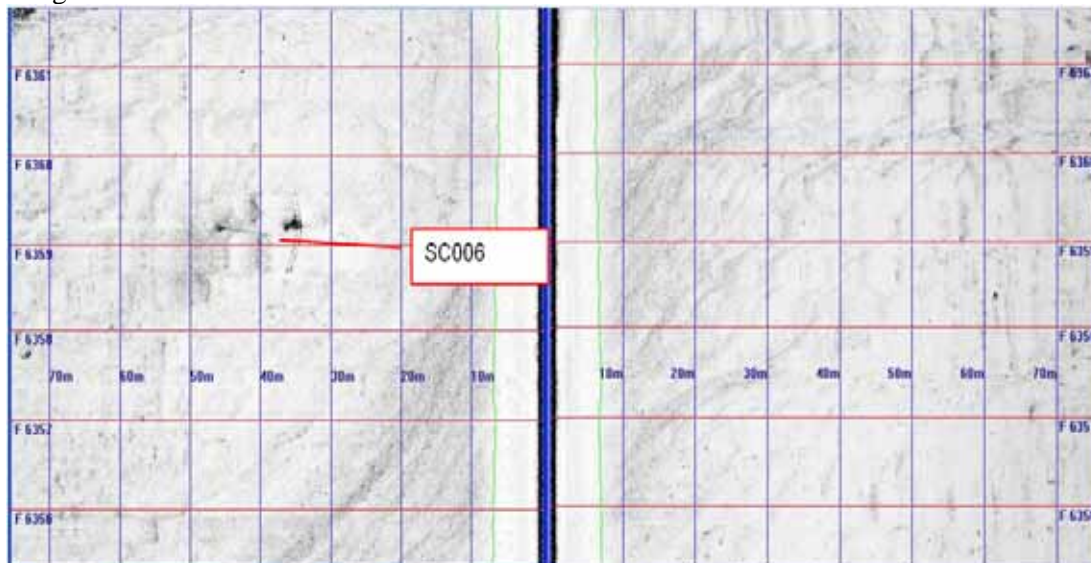


Image 13 Side scan sonar contact SC010

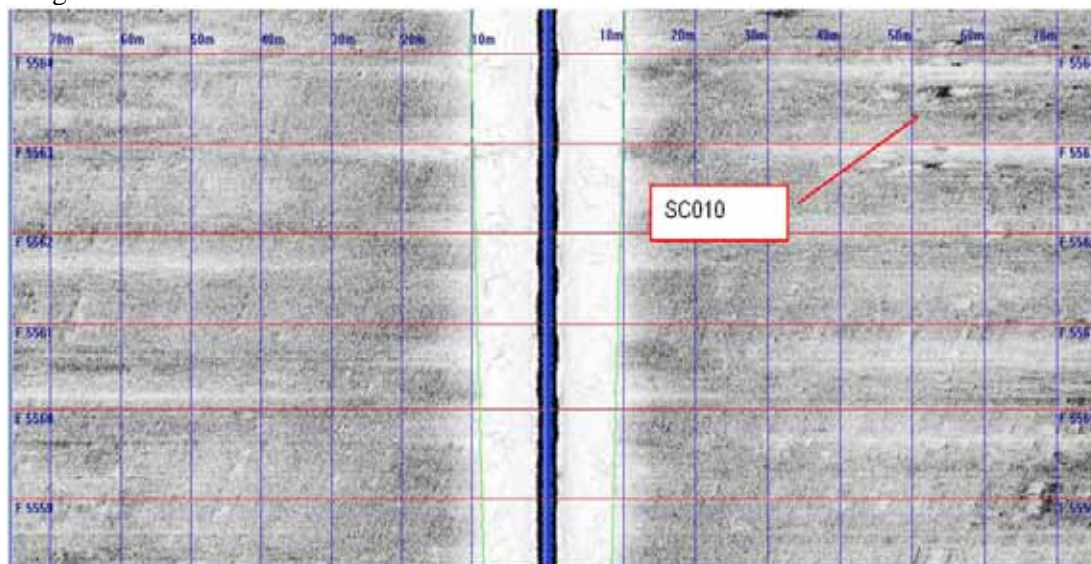


Image 14 Side scan sonar contact SC011

