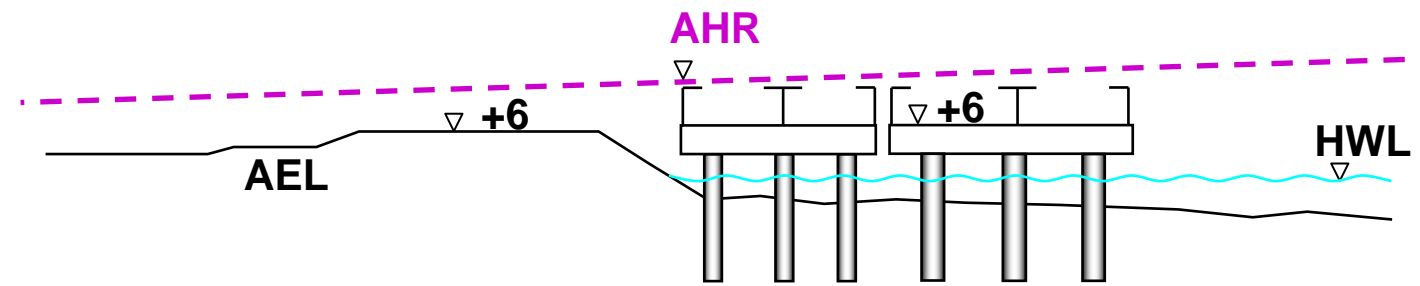


Low-level Bridge Option:

- Must be low-level bridge (total width ~60m) due to AHR
- Numerous bridge columns
- Stagnant water + Trapping of refuse
- Hostile for bridge maintenance
- Can't be screened by peripheral planting
- Blocking existing shoreline visually



At-grade Road on Reclamation Option:

- More favourable for roadside tree planting
- At-grade road screened by woodland peripheral planting
- Natural rocks on new seawall to re-establish habitat

