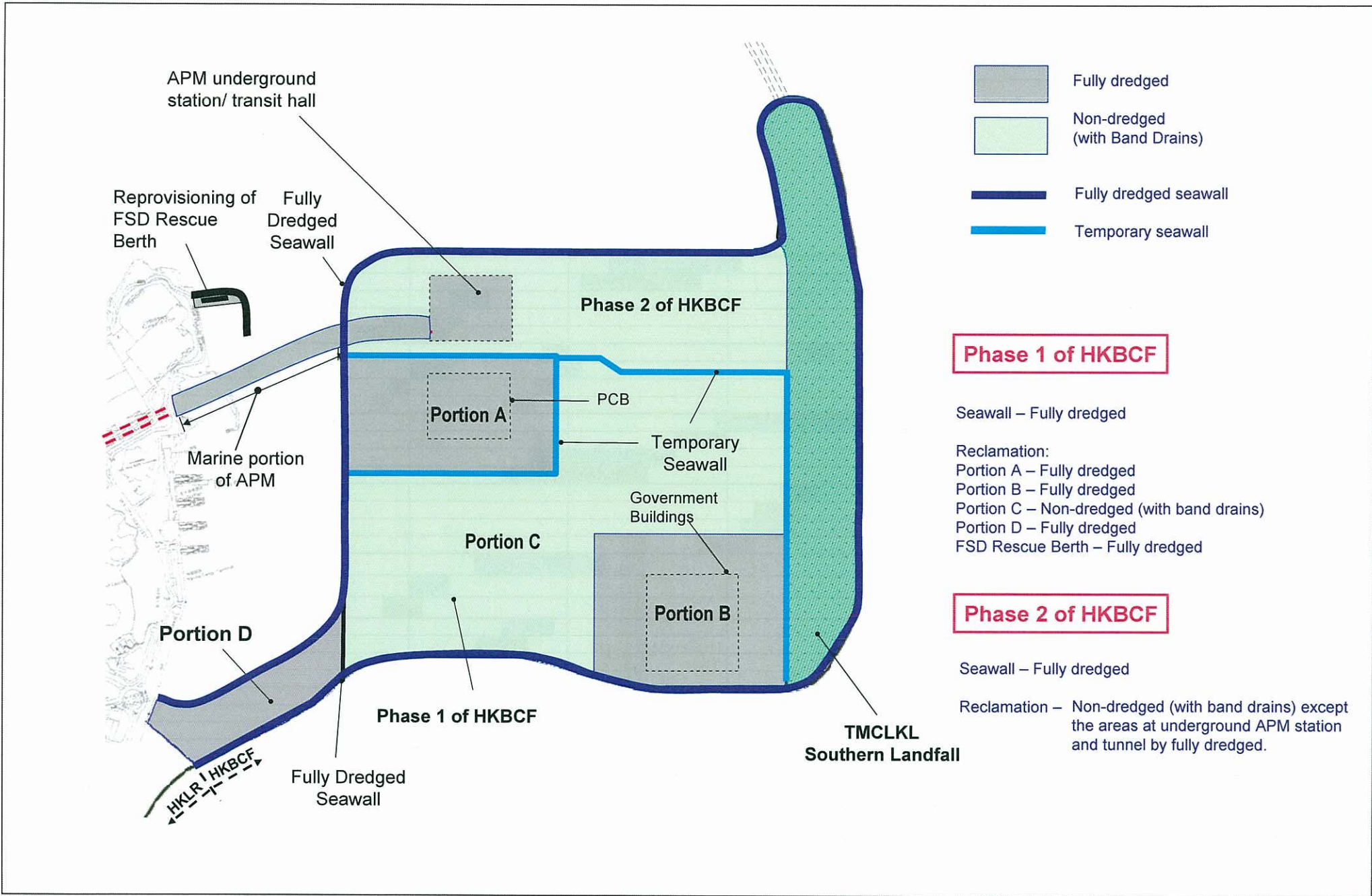


APPENDIX 9A1

**Construction Sequence
and Construction
Programme –
HKBCF (Sequence A)**



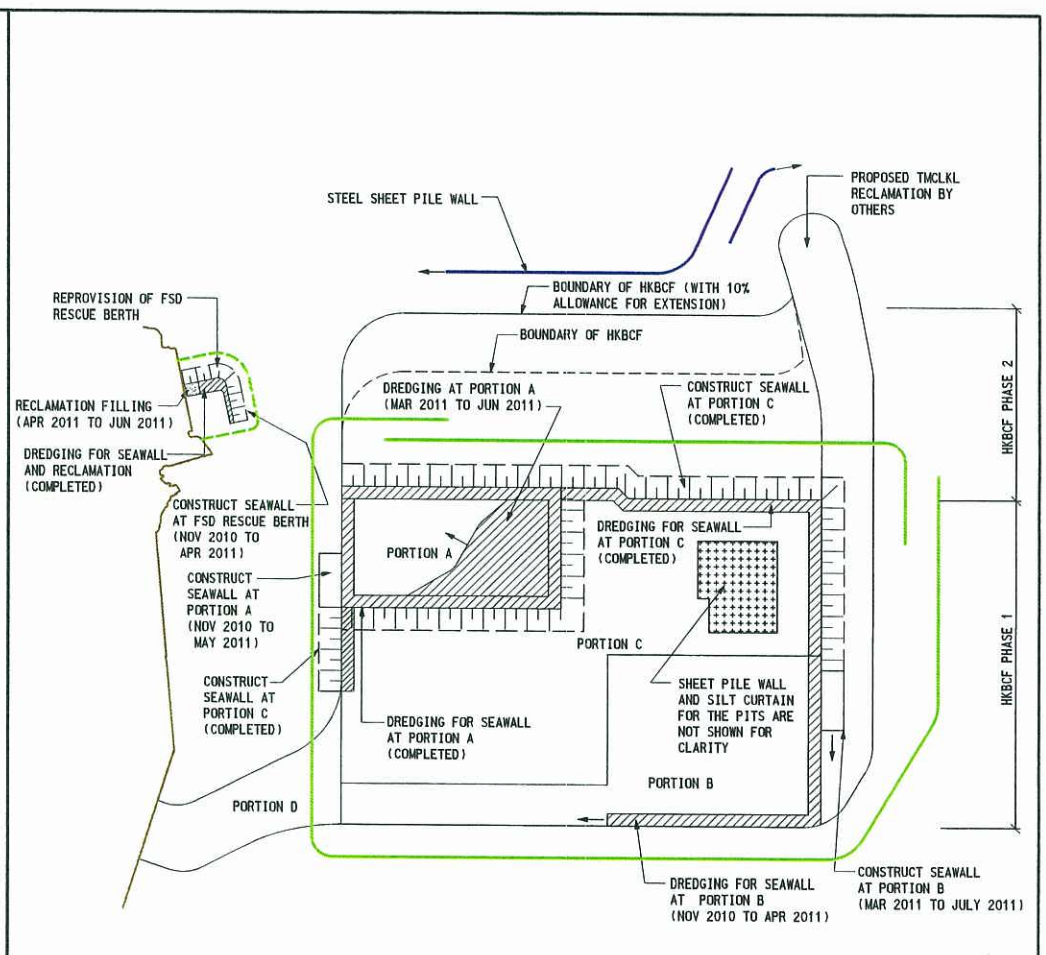
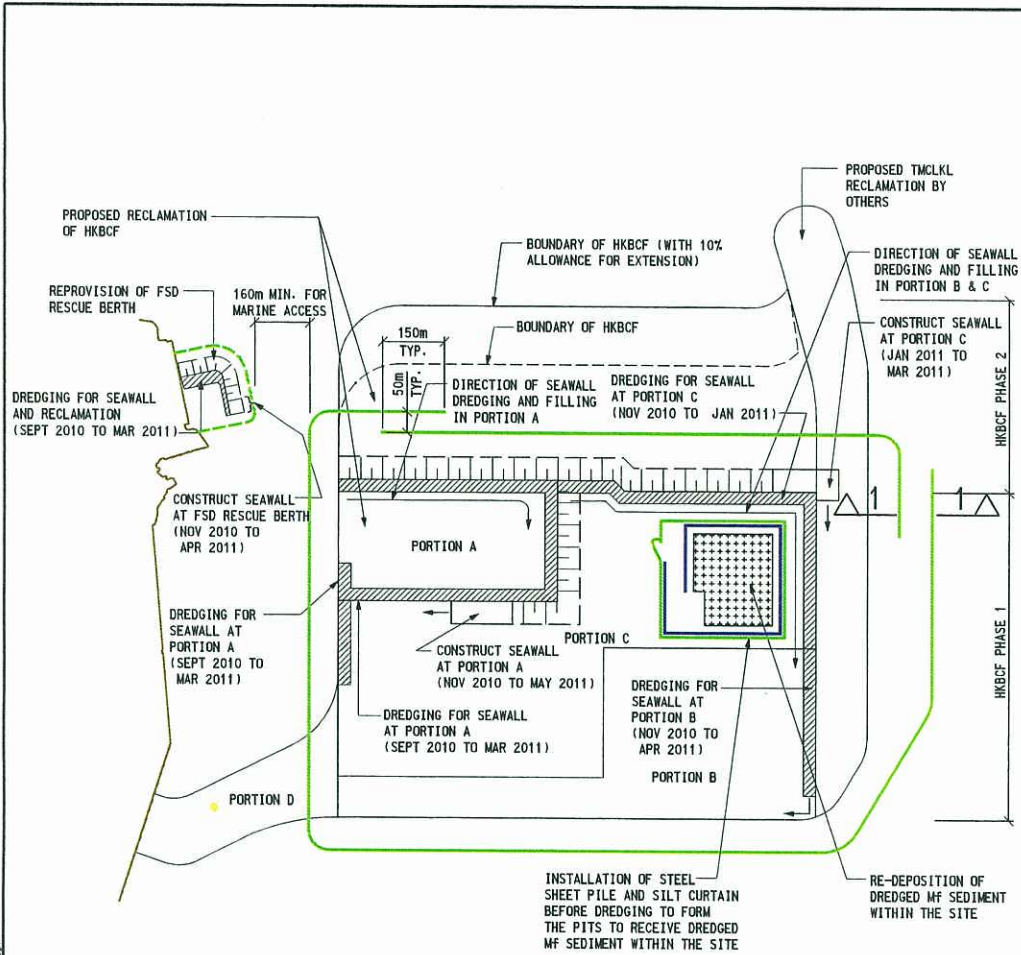
Description of Reclamation Sequence (Sequence A of HKBCF Reclamation)

In general, it is envisaged that the reclamation works would start at Portion A of HKBCF Phase 1 first. In order to minimise the impact to the water quality, Portion A of HKBCF Phase 1 would be enclosed by the temporary seawall with a gap of about 100m for marine access before the reclamation filling. After completion of the reclamation filling in Portion A of HKBCF Phase 1, substantial length of seawalls would have been completed in Portions B and C of HKBCF Phase 1. Then the reclamation would be carried out in the sequence of Portion B, Portion C, Portion D of HKBCF Phase 1 and finally HKBCF Phase 2. Assuming the reclamation of HKBCF commence in Aug 2010, the envisaged reclamation sequence is as follows:

- 1) Commence dredging for the temporary seawall at the north-west corner of Portion A in HKBCF Phase 1 and then along the perimeter of Portion A in the clockwise direction as shown in Stage 1 of **Drawing 301 in Appendix 9A1**. This dredging activity is anticipated to be carried out from Sept 2010 to Mar 2011. After a portion of seawall trench is dredged, filling for seawall would also start from the north-west corner of Portion A and in the clockwise direction. A gap of about 100m seawall as shown in Stage 3 of **Drawing 302 in Appendix 9A1** would be left for the temporary marine access to enable the reclamation activities in Portion A. This section of seawall would be completed after the dredging and filling for reclamation in Portion A.
- 2) The dredging and filling for the seawall and reclamation of FSD rescue berth at the western side of HKBCF site would be carried out concurrently with Portion A as shown in Stages 1 and 2 of **Drawing 301 in Appendix 9A1**.
- 3) Following completion of seawall dredging in Portion A, dredging for the reclamation in Portion A is anticipated to be commenced in Mar 2011. This dredging activity is anticipated to be commenced at the south-east corner of Portion A and in the direction of north-west towards the temporary access at the seawall. Meanwhile, seawall filling is continued at the western side of Portion A. As Portion A is small in area (about 500m X 250m), it is considered that the reclamation dredging and seawall filling in Portion A are carried out at the same time and no leading edge of seawall is assumed in this case.
- 4) As shown in Stage 3 of **Drawing 302 in Appendix 9A1**, reclamation filling of Portion A is anticipated to be commenced in June 2011 after completion of the seawall filling in Portion A. Therefore, the reclamation filling of Portion A would be carried out within the area enclosed by seawall (except the 100m gap). Reclamation filling of Portion A would start at the south-east corner of Portion A and in the direction of north-west similar to the reclamation dredging of Portion A. The reclamation of Portion A is anticipated to be completed in Aug 2011.
- 5) While the seawall dredging and filling in Portion A is on-going, the dredging and filling for seawall in Portions B and C are also carried out concurrently. The direction of these activities is from the north-east corner of Portion A and in clockwise direction as shown in Stages 1 to 3 of **Drawings 301 to 302 in Appendix 9A1**. In addition, a short section of seawall in Portion C at the western edge (i.e underneath Portion A) would also be constructed between Jan 2011 to Mar 2011.
- 6) After completion of the seawall in Portion C and the seawall up to nearly half of the southern edge of HKBCF site in Portion B, the reclamation filling in Portion C and reclamation dredging in Portion B would start at the north-east corner of Portions C and B respectively. The locations and directions of above reclamation dredging and filling

are shown in Stage 3 of **Drawing 302 in Appendix 9A1**. In this case, the leading edge of seawall is about 200m for the above activities.

- 7) The seawall in Portion B is anticipated to be completed in Jul 2011 leaving a gap for the temporary marine access at the south-west corner of Portions B and C as shown in Stage 4 of **Drawing 302 in Appendix 9A1**. Then the reclamation dredging of Portion B would complete in Sept 2011 and the reclamation filling of Portions B and C would continue in the direction of south-west towards the above temporary marine access. After the completion of seawall in Jul 2011, the reclamation filling of Portions B and C would be carried out in the area enclosed by the seawall (except the 100m gap). The reclamation filling of Portions B and C are anticipated to be completed in Nov 2011 and Mar 2012 respectively.
- 8) After completion of the seawall in Portions B and C, the seawall dredging of HKBCF Phase 2 would start at the south-west corner of HKBCF Phase 2 and proceed in the clockwise direction. The seawall filling of HKBCF Phase 2 would also start when a portion of seawall trench is dredged and ready to receive the seawall fill. The location and direction of above reclamation dredging and filling are shown in Stage 4 of **Drawing 302 in Appendix 9A1**.
- 9) Dredging and filling for the installation of immerse tube tunnel of Automatic People Mover (APM) are anticipated to be carried out from Feb 2012 to Jan 2013 which overlaps with the dredging and filling of seawall in HKBCF Phase 2 in Mid 2012.
- 10) After completion of dredging and filling for the immerse tube tunnel, the construction plant are anticipated to be moved to Portion D of HKBCF Phase 1. The seawall dredging would start at the south-east corner of Portion D and in the clockwise direction. The seawall filling is to follow when a portion of seawall trench is dredged and ready to receive the seawall fill. The seawall at Portion D is anticipated to be completed in May 2013. The temporary marine access mentioned in Paragraph (7) above is moved to the south-east corner of Portion D. This 100m gap of seawall would be completed after the reclamation fill of Portion D is completed.
- 11) The reclamation dredging in Portion D is from the west to east with some overlapping with the seawall filling activity in Portion D. In this case, no leading edge of seawall is assumed. After completion of the seawall (except the above gap for temporary marine access), the reclamation filling would be carried out in the enclosed area of Portion D.
- 12) The seawall in HKBCF Phase 2 is anticipated to be completed in August 2012 leaving a gap of about 100m at the north-east corner to allow for the temporary marine access for the reclamation activities in HKBCF Phase 2. After the area of HKBCF Phase 2 is enclosed by the seawall (except the 100m gap), the reclamation dredging for the APM tunnel and underground station within HKBCF Phase 2 would be carried out. The reclamation filling would also be carried out within the area enclosed by the seawall as shown in Stage 7 of **Drawings 304 in Appendix 9A1**.
- 13) The reclamation of HKBCF is completed after the filling in Phase 2 and completion of remaining section of seawall allow for the temporary marine access.



NOTE:

FIRST MEASURE: CAGE TYPE SILT CURTAIN FOR ALL GRAB DREDGERS (SEE TYPICAL SECTION ATTACHED)

SECOND MEASURE: SINGLE SILT CURTAIN AROUND THE SITE (SEE TYPICAL SECTION ATTACHED)

LEGEND:

- STEEL SHEET PILE WALL
- SINGLE SILT CURTAIN
- DREDGED AREA
- COMPLETED SLOPING SEAWALL
- RE-DEPOSITION OF DREDGED MF SEDIMENT

STAGE 1 (ON FEB 2011)

NOTE:

FIRST MEASURE: CAGE TYPE SILT CURTAIN FOR ALL GRAB DREDGERS (SEE TYPICAL SECTION ATTACHED)

SECOND MEASURE: SINGLE SILT CURTAIN AROUND THE SITE (SEE TYPICAL SECTION ATTACHED)

LEGEND:

- STEEL SHEET PILE WALL
- SINGLE SILT CURTAIN
- DREDGED AREA
- COMPLETED SLOPING SEAWALL
- RE-DEPOSITION OF DREDGED MF SEDIMENT

STAGE 2 (ON APRIL 2011)

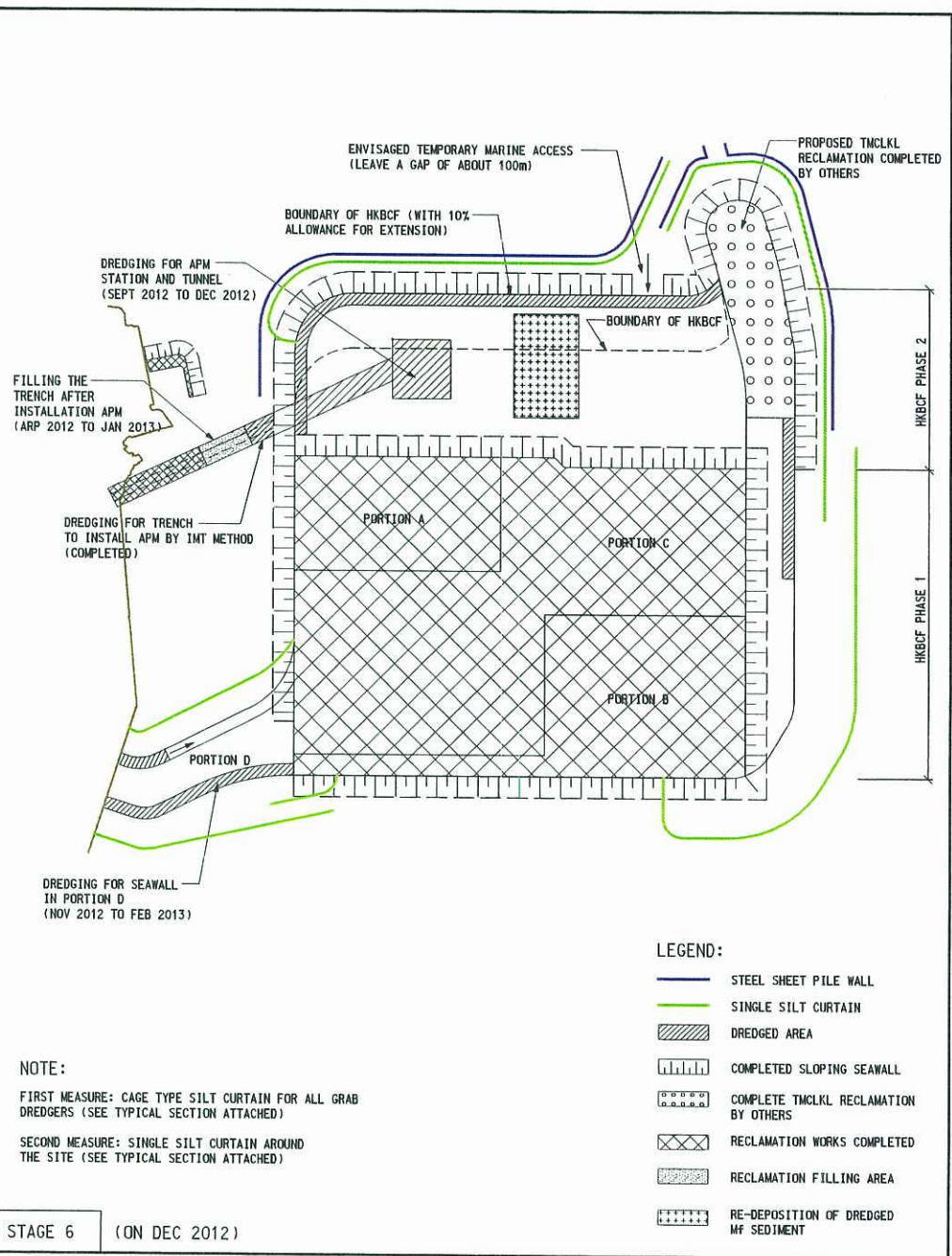
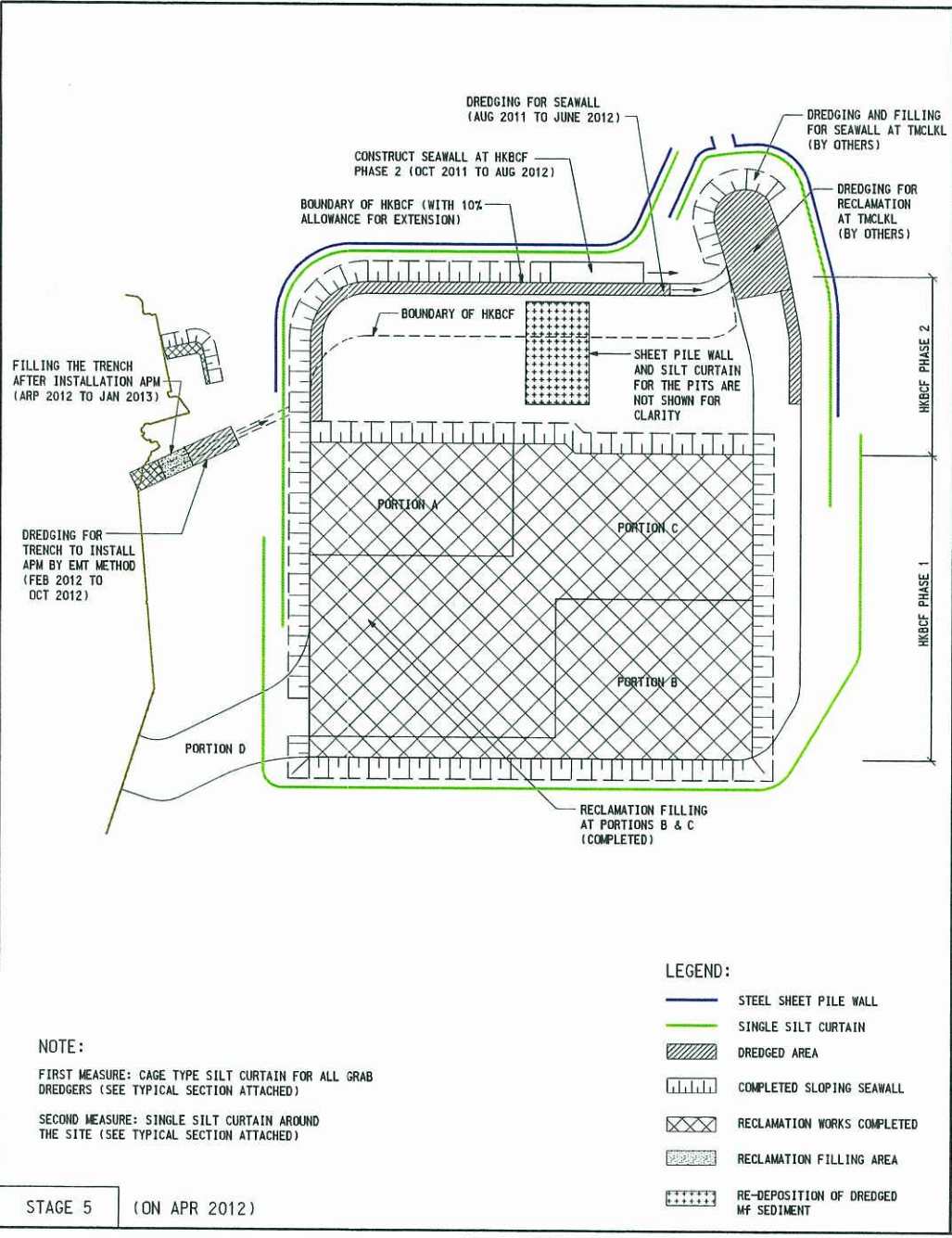


Job Title
Agreement No. CE 14/2008 (CE)
Hong Kong-Zhuhai-Macao Bridge Hong Kong
Boundary Crossing Facilities - Investigation

Drawing Title
ANTICIPATED CONSTRUCTION
SEQUENCE OF HKBCF (SEQUENCE A)

Drawn	CH	Date	02/09	Drawing No.	25308/041/301
Checked	SK	Approved	AK		
A	FIRST ISSUE	02/09	Scale	1:12500 on A3	Status
Rev.	Description	Date			PRELIMINARY
					Rev. A

PRINTED BY : 30/7/2008
 FILENAME : J:\K3\308\48\APM\UL\K3\308\48\01\CON\25308-041-303.dwg



NOTE:
 FIRST MEASURE: CAGE TYPE SILT CURTAIN FOR ALL GRAB DREDGERS (SEE TYPICAL SECTION ATTACHED)
 SECOND MEASURE: SINGLE SILT CURTAIN AROUND THE SITE (SEE TYPICAL SECTION ATTACHED)

NOTE:
 FIRST MEASURE: CAGE TYPE SILT CURTAIN FOR ALL GRAB DREDGERS (SEE TYPICAL SECTION ATTACHED)
 SECOND MEASURE: SINGLE SILT CURTAIN AROUND THE SITE (SEE TYPICAL SECTION ATTACHED)

- LEGEND:**
- STEEL SHEET PILE WALL
 - SINGLE SILT CURTAIN
 - DREDGED AREA
 - COMPLETED SLOPING SEAWALL
 - RECLAMATION WORKS COMPLETED
 - RECLAMATION FILLING AREA
 - RE-DEPOSITION OF DREDGED MF SEDIMENT

- LEGEND:**
- STEEL SHEET PILE WALL
 - SINGLE SILT CURTAIN
 - DREDGED AREA
 - COMPLETED SLOPING SEAWALL
 - COMPLETE TMCLKL RECLAMATION BY OTHERS
 - RECLAMATION WORKS COMPLETED
 - RECLAMATION FILLING AREA
 - RE-DEPOSITION OF DREDGED MF SEDIMENT

STAGE 5 (ON APR 2012)

STAGE 6 (ON DEC 2012)



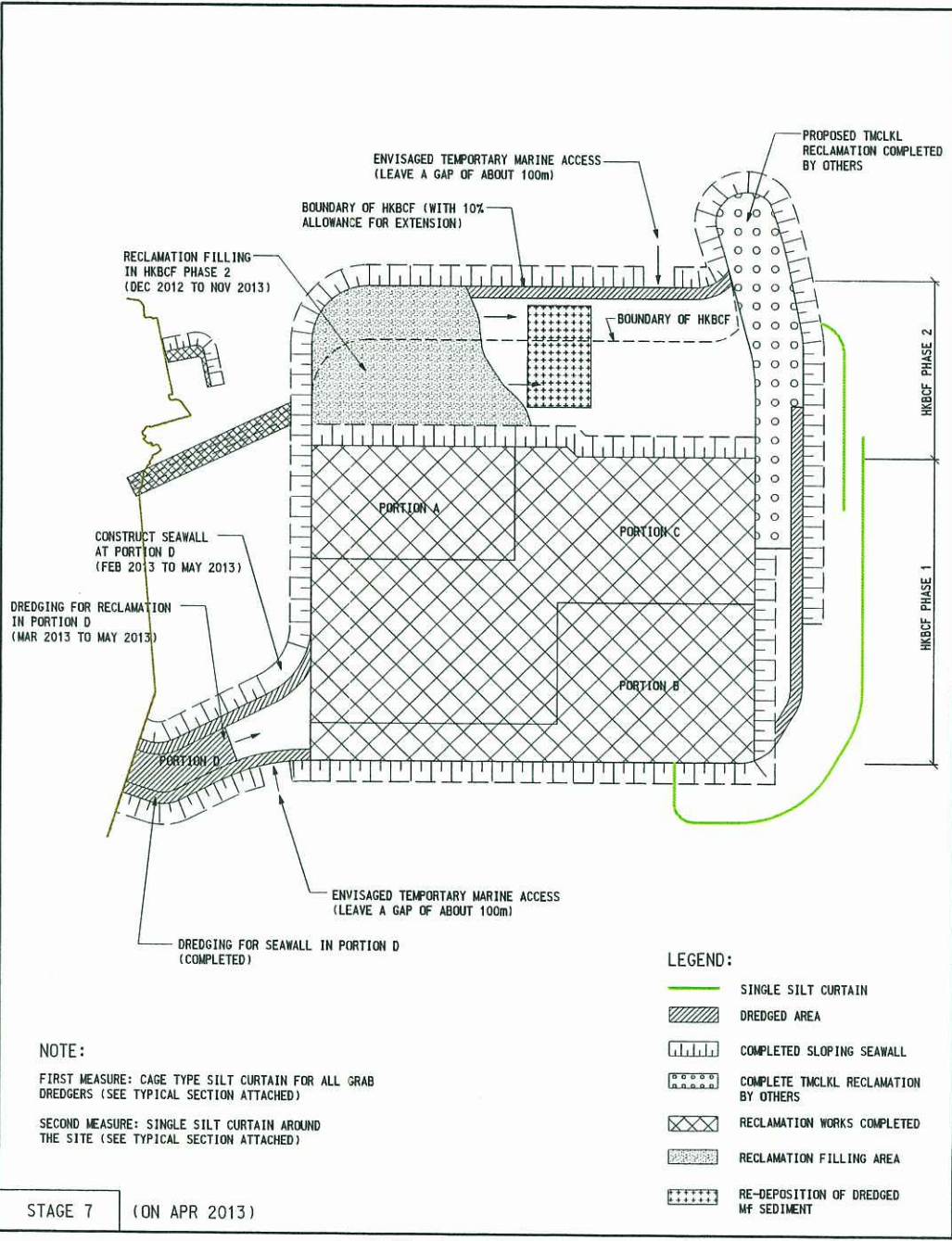
ARUP Ove Arup & Partners
 Hong Kong Limited

Job Title
Agreement No. CE 14/2008 (CE)
Hong Kong-Zhuhai-Macao Bridge Hong Kong
Boundary Crossing Facilities - Investigation

Drawing Title
ANTICIPATED CONSTRUCTION
SEQUENCE OF HKBCF (SEQUENCE A)

Drawn	CH	Date	02/09	Drawing No.	25308/041/303
Checked	SK	Approved	AK		
Rev	Description		Date	Status	Rev.
A	FIRST ISSUE		02/09	PRELIMINARY	A
Scale			1:12500 on A3		

Printed by : "0"
 File name : J:\425308\BUP\401\HKBCF\CHINA\G01\CONSTR\25308-5A-41-304.dwg
 30/7/2009



Job Title		Drawing Title		Drawn		Date		Drawing No.	
Agreement No. CE 14/2008 (CE)		ANTICIPATED CONSTRUCTION SEQUENCE OF HKBCF (SEQUENCE A)		CN		02/09		25308/041/304	
Hong Kong-Zhuhai-Macao Bridge Hong Kong Boundary Crossing Facilities - Investigation				Checked SK		Approved AK			
				A FIRST ISSUE		02/09		Scale 1:12500 on A3	
				Rev. Description		Date		Status PRELIMINARY Rev. A	

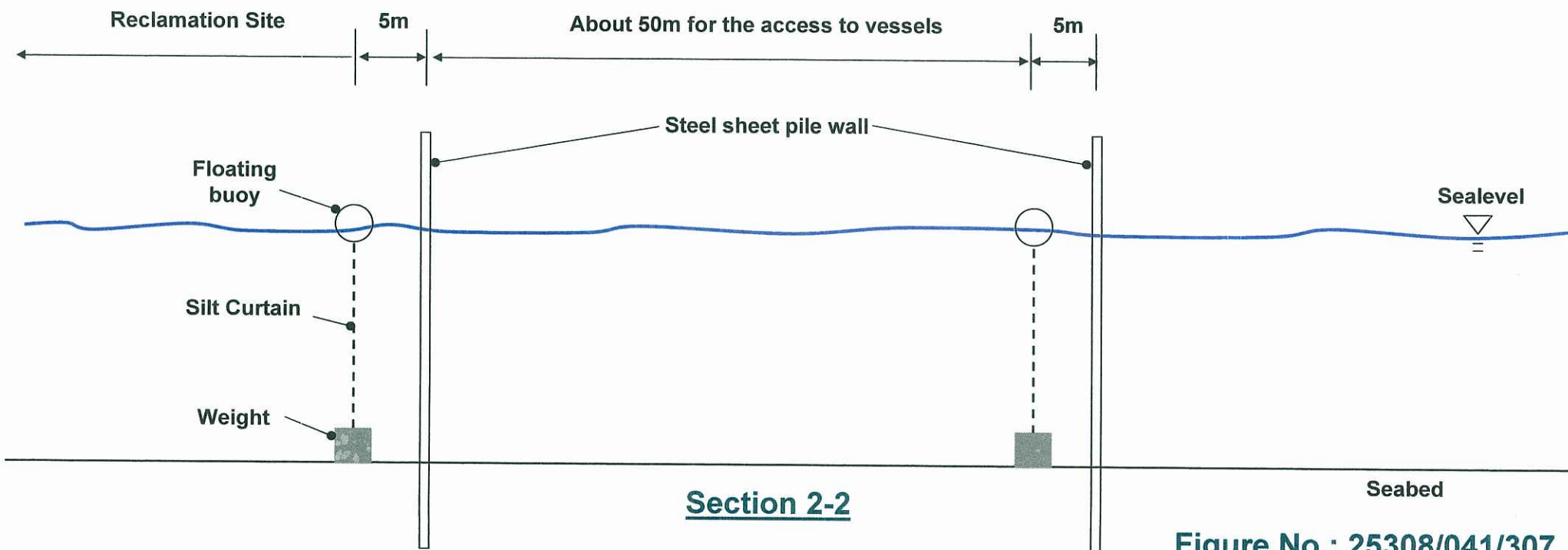
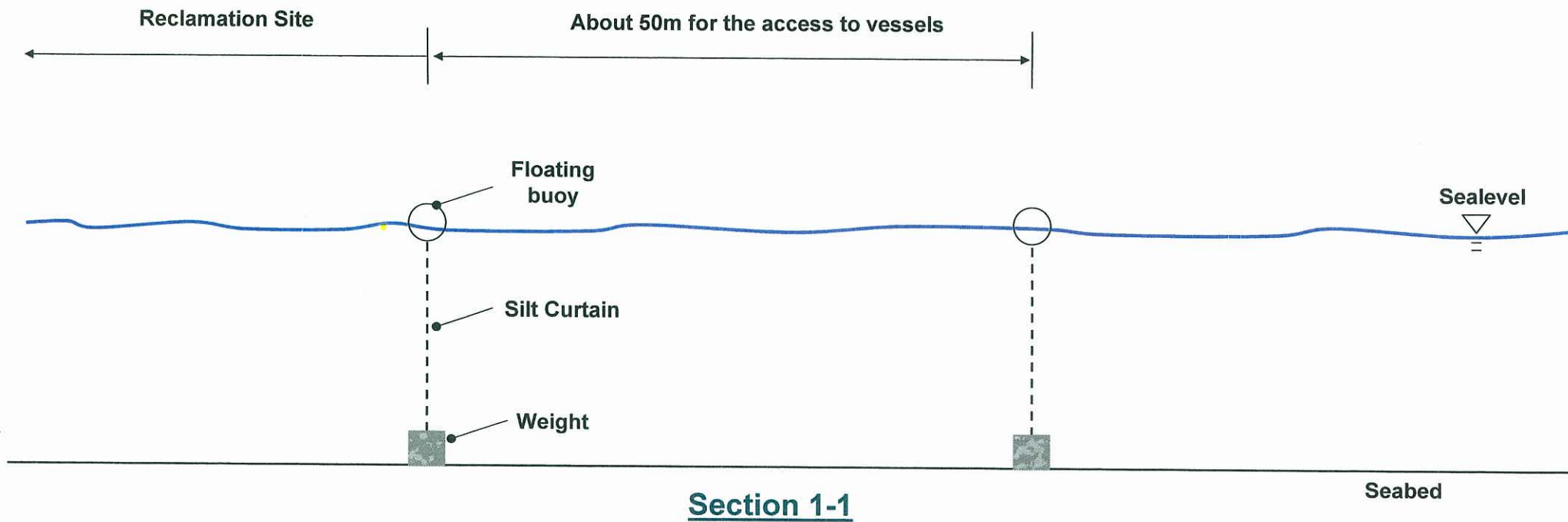
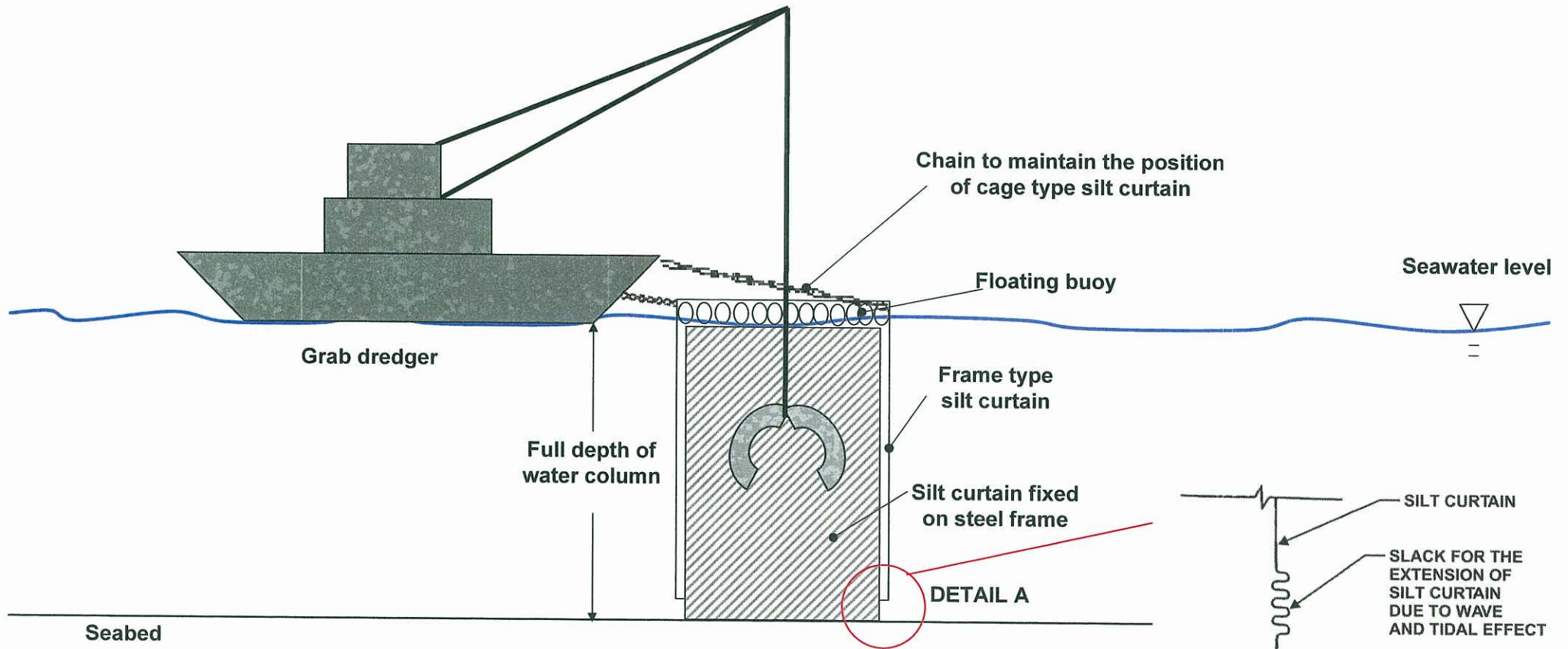


Figure No.: 25308/041/307



Additional Cage Type Silt Curtain for Grab Dredgers

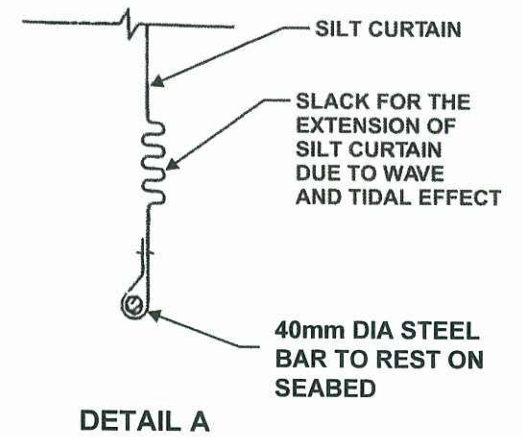


Figure No.: 25308/041/308