

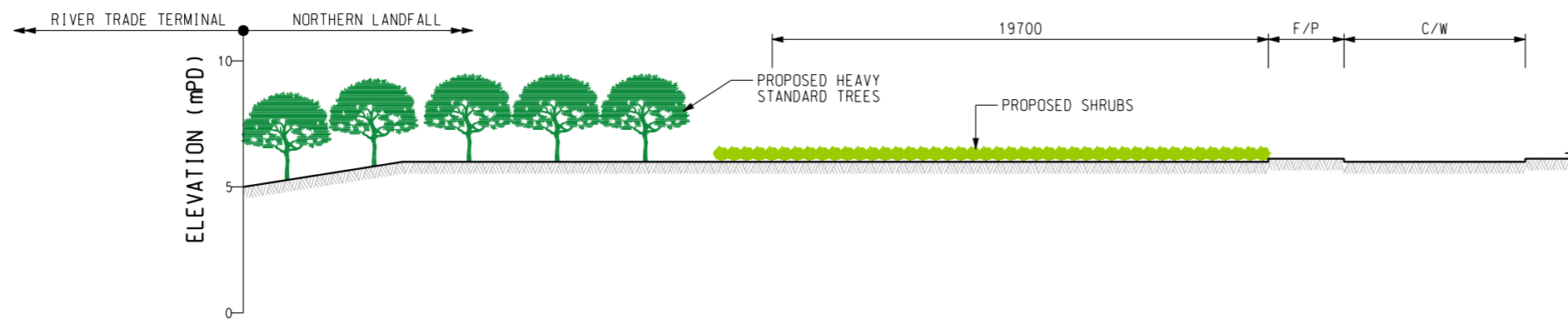
Plotting By: 30/7/2009  
 PLOT SCALE: 1:40

**AECOM**

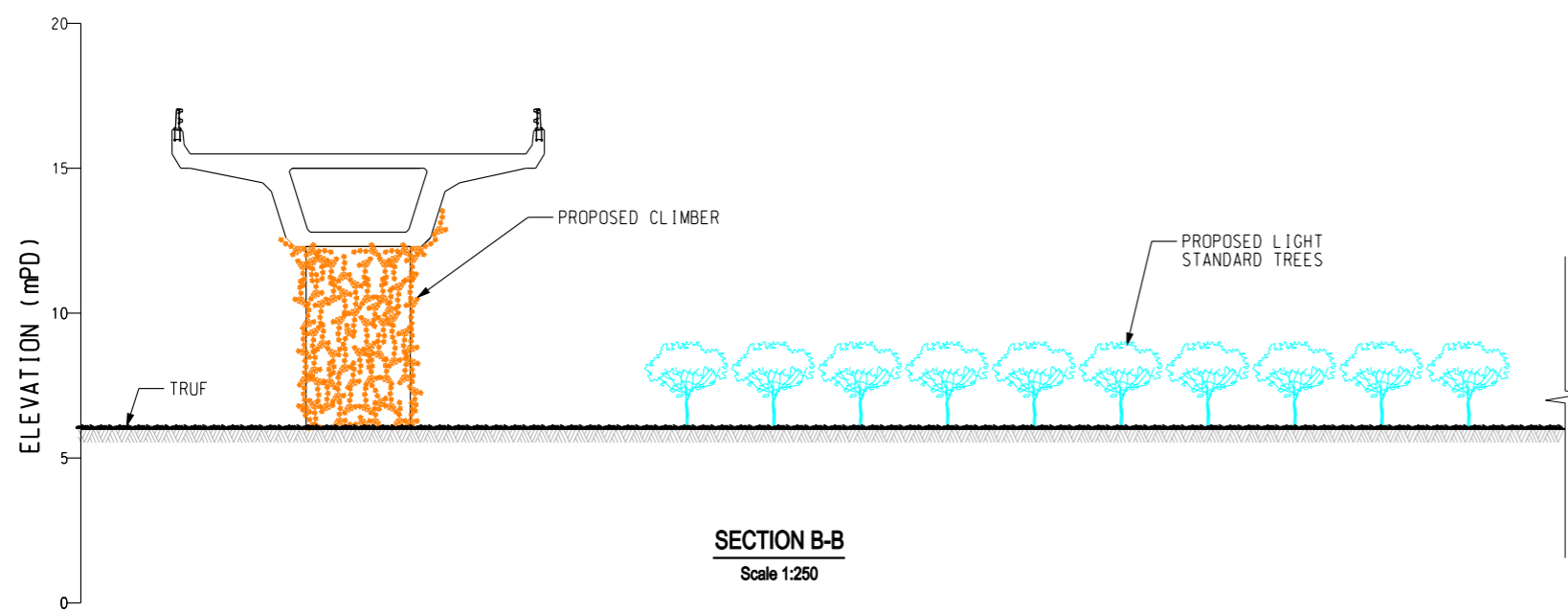
AGREEMENT NO. CE 52/2007(HY)  
 TUEN MUN - CHEK LAP KOK LINK - INVESTIGATION

KEY PLAN OF SECTION

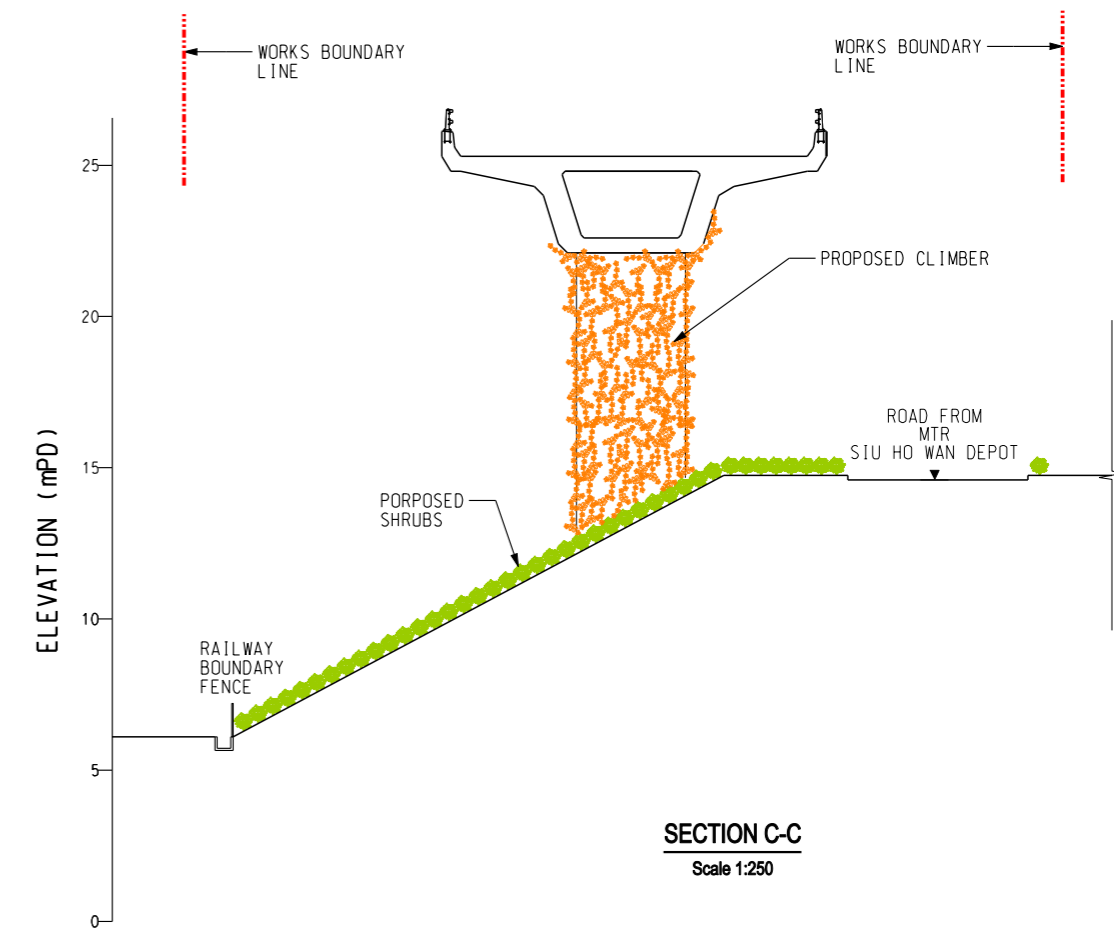
SCALE	1:40000	DATE	JUL 2009
CHECK	E.L.	DRAWN	F.L.
JOB No.	60044963	DRAWING No.	FIGURE 10.5.1
		REV	--



**SECTION A-A**  
Scale 1:250



**SECTION B-B**  
Scale 1:250



**SECTION C-C**  
Scale 1:250

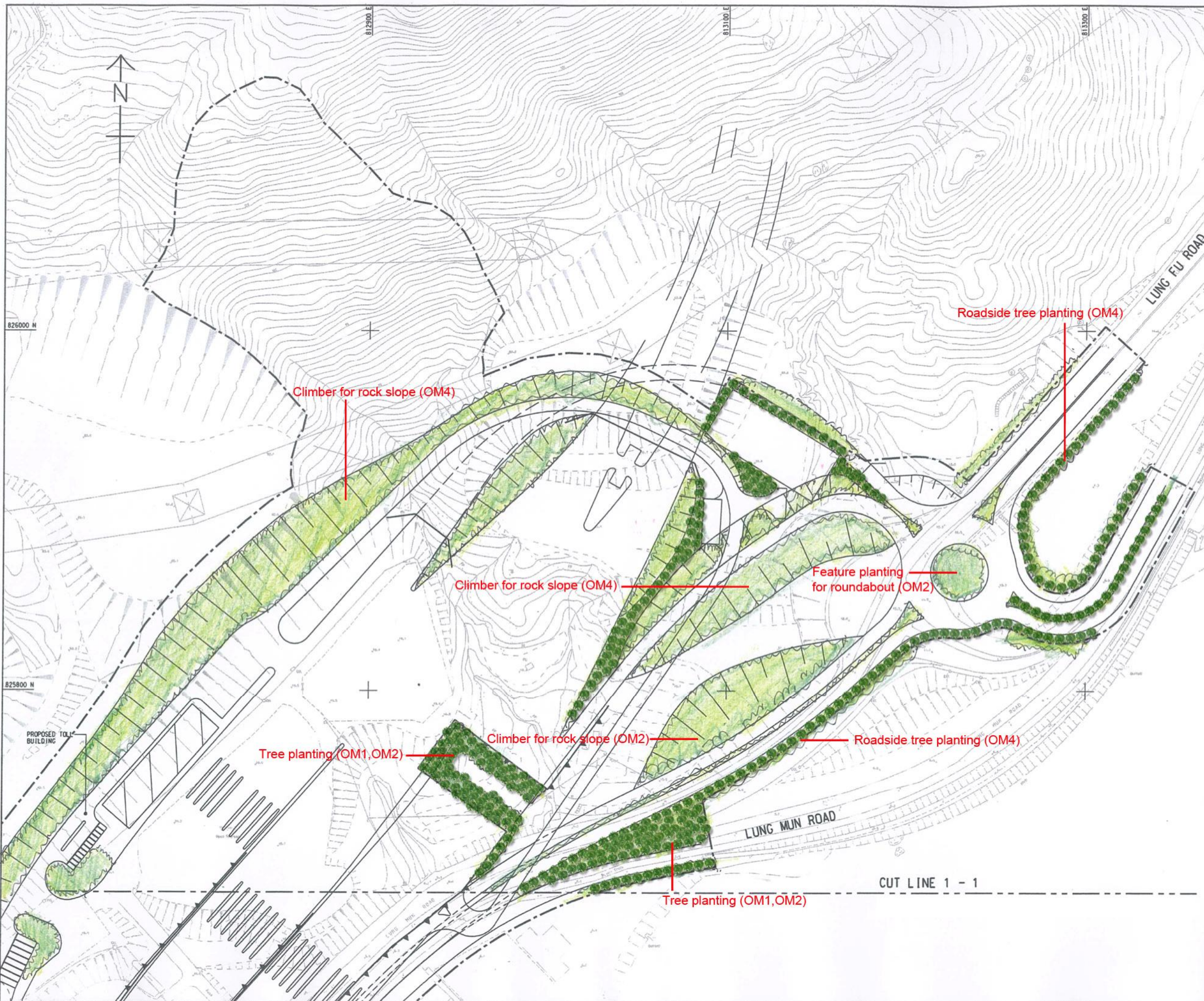
Plotting By: 30/7/2009  
 PLOT SCALE: 1:0.25

**AECOM**

AGREEMENT NO. CE 52/2007(HY)  
 TUEN MUN - CHEK LAP KOK LINK - INVESTIGATION

**SECTIONS**

SCALE	1:250 @ A3	DATE	JUL 2009
CHECK	E.L.	DRAWN	F.L.
JOB No.	60044963	DRAWING No.	FIGURE 10.5.2
		REV	--



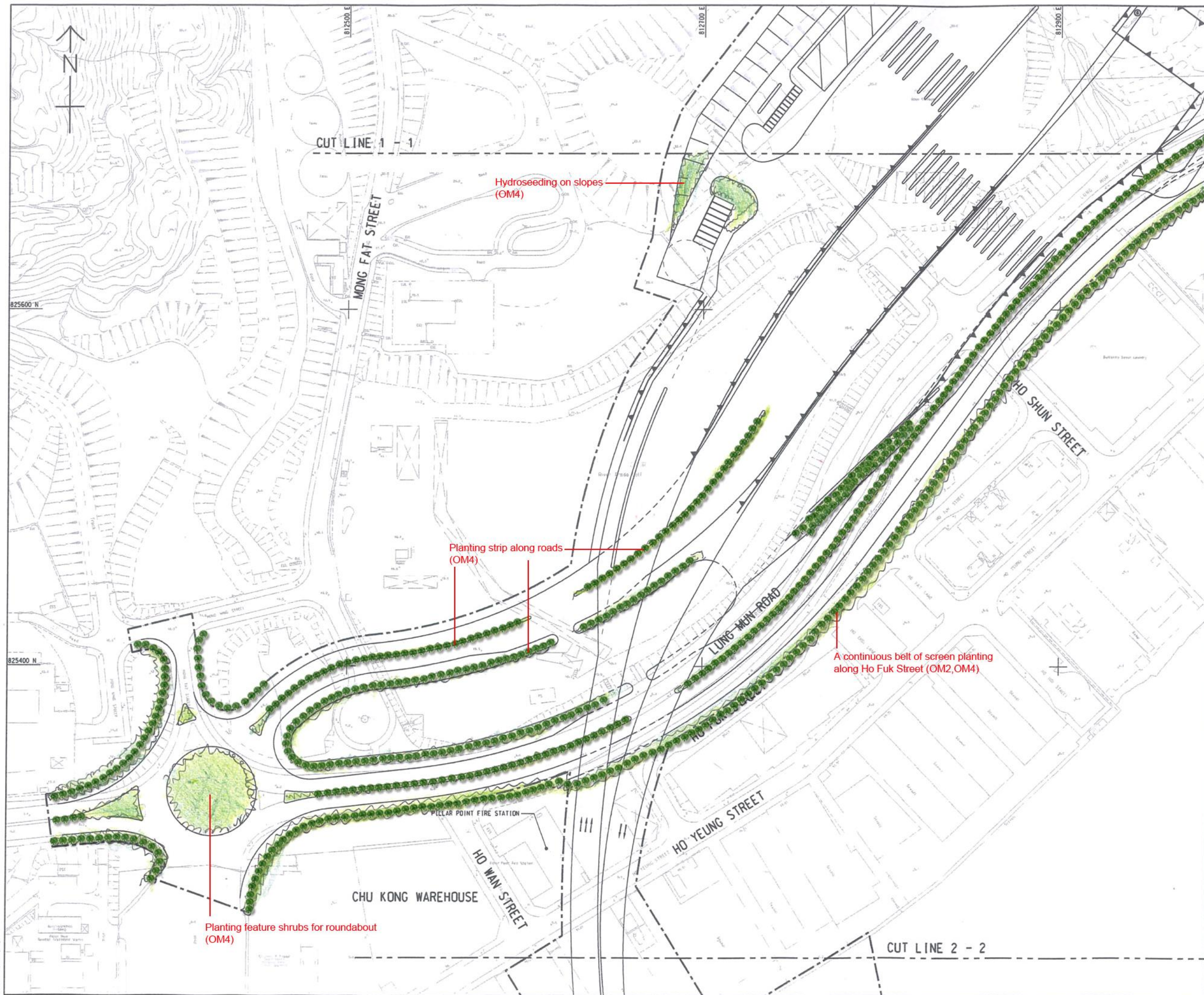
- NOTES:**
1. THIS DRAWING TO BE READ IN CONJUNCTION WITH DRAWINGS NO. SK 3 - SK 23.
  2. ALL DIMENSIONS ARE IN METRES UNLESS NOTED OTHERWISE.
  3. ALL LEVELS ARE IN METRES AND REFER TO PRINCIPAL DATUM.
  4. ALL CO-ORDINATES ARE IN ACCORDANCE WITH HK(1980) GAUSS CO-ORDINATE SYSTEM.
  5. DETAILS INCLUDING DIMENSIONS, LEVELS, DESCRIPTIONS, LOCATIONS, ETC GIVEN FOR EXISTING ROADS, FOOTPATHS, BOX CULVERTS, CHAIN LINK FENCE, ETC. ARE INDICATIVE ONLY. THE CONTRACTOR SHALL VERIFY THE ACTUAL EXISTING DETAILS ON SITE.

- LEGEND:**
- LIMIT OF WORKS AREA
  - (-10.5) FINISHED TUNNEL LEVEL
  - (22.5) FINISHED AT-GRADE/ELEVATED ROAD LEVEL
  - 22.5 EXISTING SPOT LEVEL
  - [Symbol] PROPOSED CUT SLOPE
  - [Symbol] EXISTING SLOPE TO BE IMPROVED
  - [Symbol] EXISTING SLOPE
  - TRAFFIC LANE
  - [Symbol] PROPOSED SLOPING SEAWALL
  - [Symbol] PROPOSED VERTICAL SEAWALL

REV.	DESCRIPTION	DATE
<p>路政署 HIGHWAYS DEPARTMENT          港珠澳大桥香港工程管理有限公司          Hong Kong - Zhuhai - Macao Bridge          Hong Kong Project Management Office</p>		
TUEN MUN - CHEK LAP KOK LINK - INVESTIGATION		
MASTER LANDSCAPE PLAN		
SHEET 1 OF 13		
<b>MAUNSELL   AECOM</b> Maunsell Consultants Asia Ltd. 茂盛(亞洲)工程顧問有限公司		
DRG.NO. 圖紙編號	FIGURE 10.9.1	
DESIGNED BY 設計	AGREEMENT NO. 訂約編號	P. ETC. APPROVED 審核
---	CE52/2007 (HY)	
DRAWN BY 繪圖	STATUS 階段	
CXH		PRELIMINARY
SCALE 比例	METRES	
A1 1:1000	© COPYRIGHT RESERVED 版權所有	

DATE 2009-5-15

NOTE:  
1. FOR NOTES AND LEGEND SEE DRAWING NO. 60044963/S1A/SK 2.



路政署  
HIGHWAYS DEPARTMENT  
港珠澳大橋香港工程處  
Hong Kong - Zhuhai - Macao Bridge  
Hong Kong Project Management Office

TUEN MUN - CHEK LAP KOK LINK - INVESTIGATION  
MASTER LANDSCAPE PLAN  
SHEET 2 OF 13

MAUNSELL | AECOM  
Maunsell Consultants Asia Ltd.  
茂盛(亞洲)工程顧問有限公司

DRG. NO. 圖紙編號	FIGURE 10.9.2	
DESIGNED BY 設計	AGREEMENT NO. 協議編號	P. E. APPROVED 校對人
SCALE 比例	STATUS 階段	
DIMENSIONS ARE IN 尺寸單位	PRELIMINARY © COPYRIGHT RESERVED 版權所有	

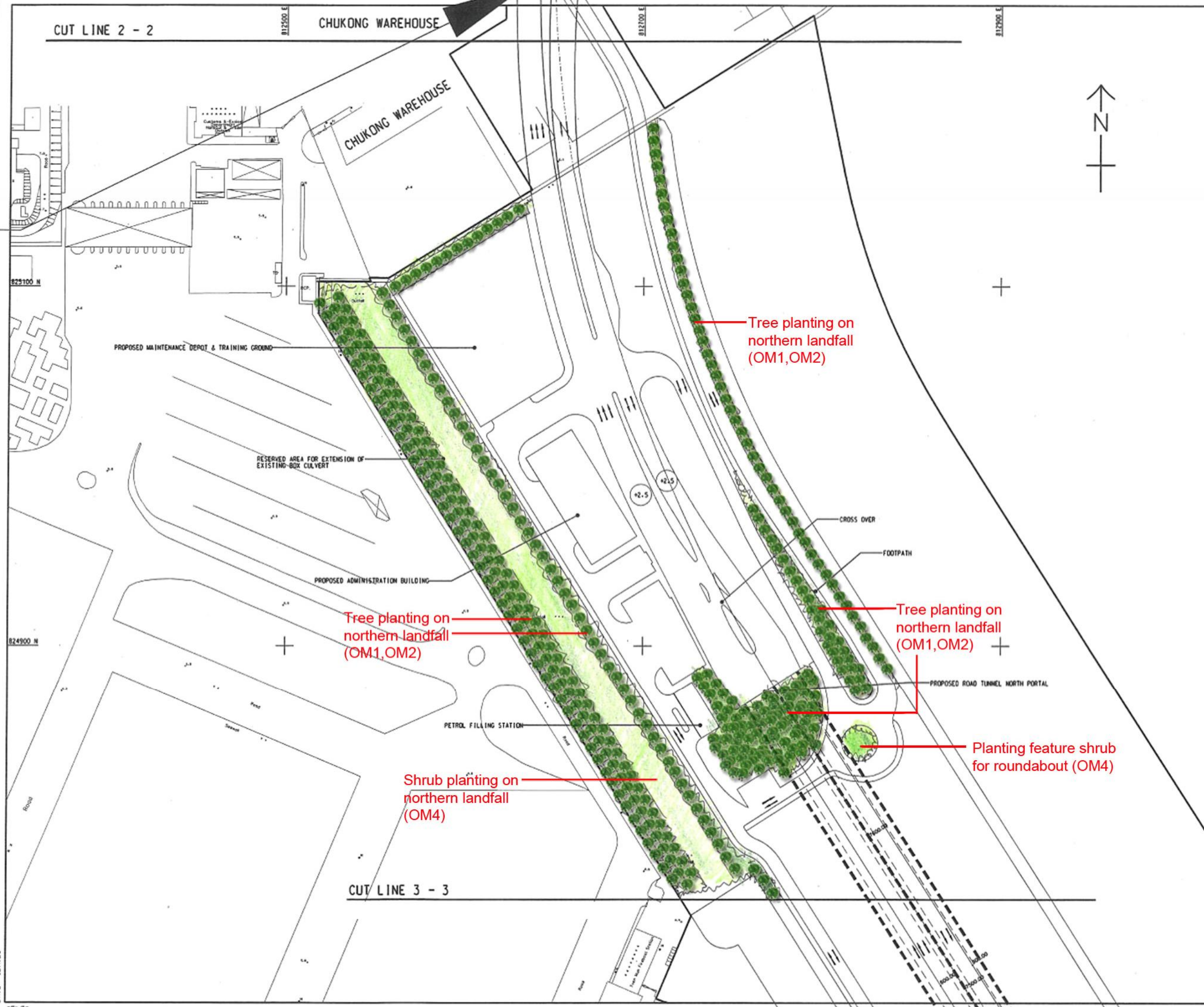
DATE 2009-5-15

CUT LINE 2 - 2

CHUKONG WAREHOUSE

CHUKONG WAREHOUSE

NOTE:  
1. FOR NOTES AND LEGEND SEE DRAWING NO. 60044963/E1A/SK 2.



Tree planting on northern landfall (OM1, OM2)

Tree planting on northern landfall (OM1, OM2)

Tree planting on northern landfall (OM1, OM2)

Shrub planting on northern landfall (OM4)

Planting feature shrub for roundabout (OM4)

NO.	DESCRIPTION	DATE	BY

HIGHWAYS DEPARTMENT  
HONG KONG - ZHUPAI - MACAO BRIDGE  
HONG KONG PROJECT MANAGEMENT OFFICE

TUEN MUN - CHEK LAP KOK LINK - INVESTIGATION

MASTER LANDSCAPE PLAN  
SHEET 3 OF 13

MAUNSELL | AECOM  
Maunsell Consultants Asia Ltd.  
茂盛(亞洲)工程顧問有限公司

DRGNO. FIGURE 10.9.3

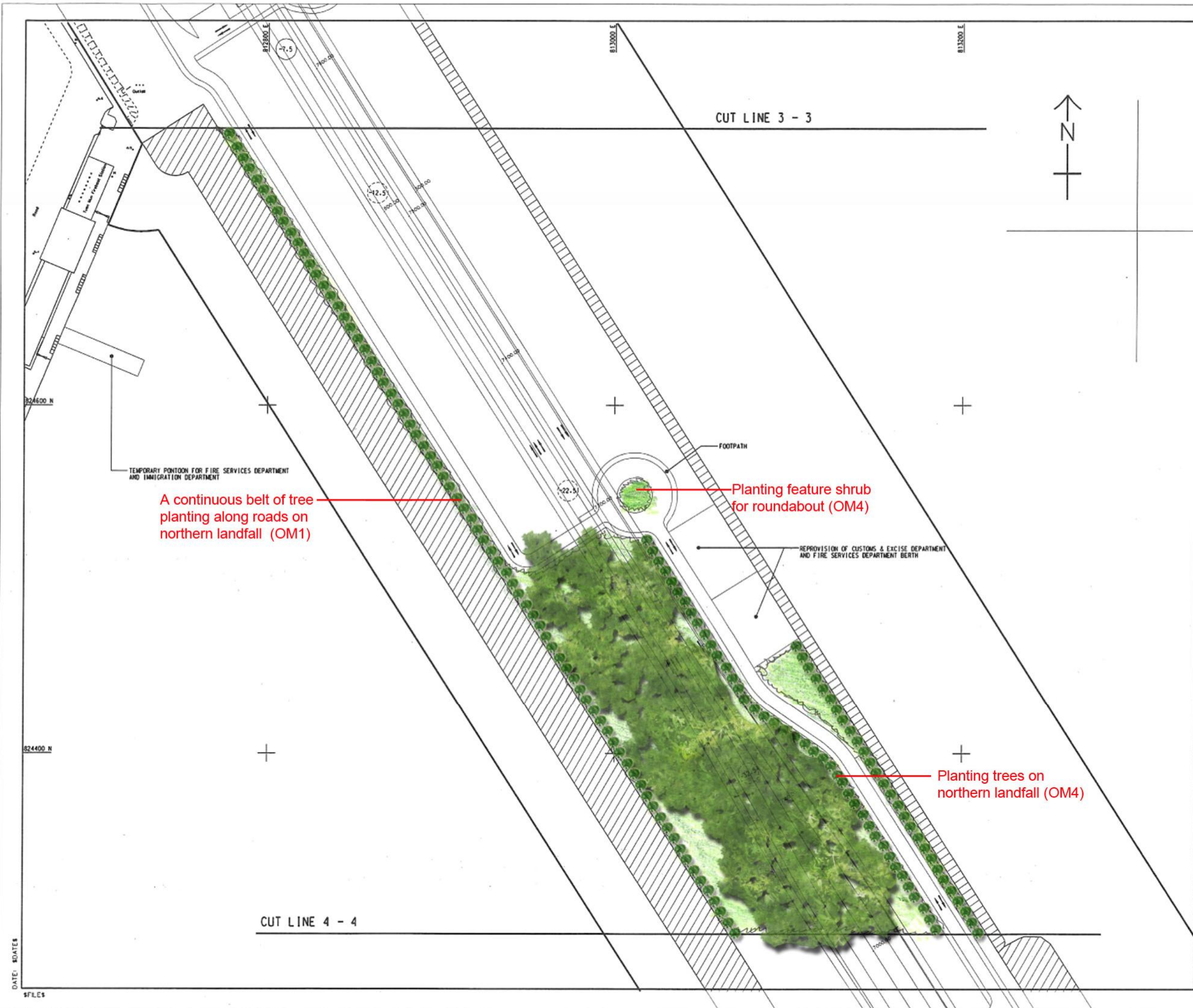
REVISIONS

SCALE: 1:1000

PRELIMINARY

COPYRIGHT RESERVED

DATE: 30/05/2007  
SFILES



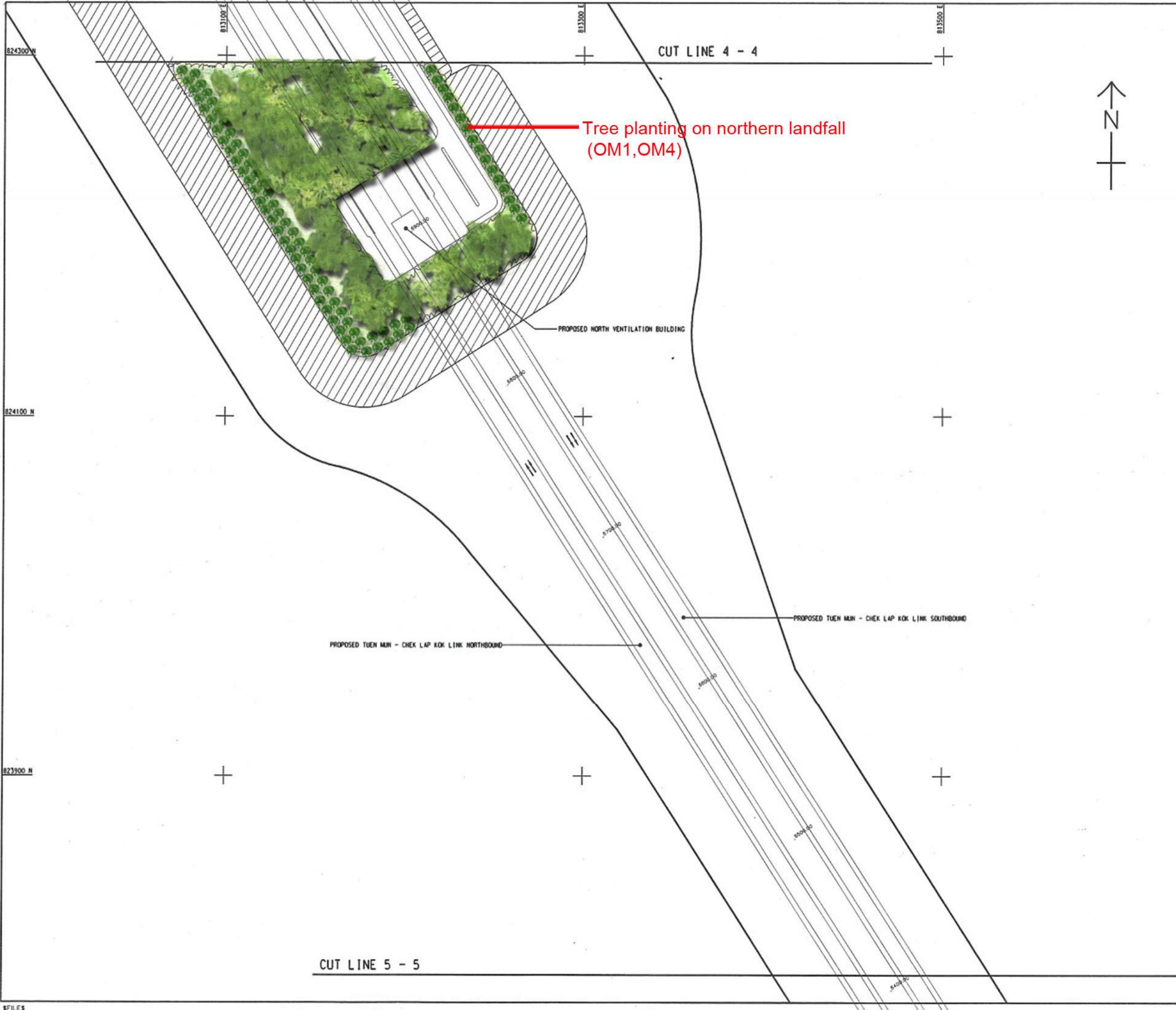
**NOTE:**  
 1. FOR NOTES AND LEGEND SEE DRAWING NO. 60044963/E1A/SK 2.

A continuous belt of tree planting along roads on northern landfall (OM1)

Planting feature shrub for roundabout (OM4)

Planting trees on northern landfall (OM4)

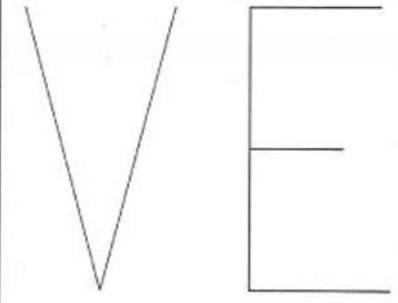
NO.	SECTION	DATE	BY
<b>HIGHWAYS DEPARTMENT</b> HONG KONG - ZHANGJIAI - MACAO BRIDGE HONG KONG PROJECT MANAGEMENT OFFICE			
<b>TUEN MUN - CHEK LAP KOK LINK - INVESTIGATION</b>			
<b>MASTER LANDSCAPE PLAN</b> SHEET 4 OF 13			
<b>MAUNSELL   AECOM</b> Maunsell Consultants Asia Ltd. 茂盛(亞洲)工程顧問有限公司			
DRGNO. 圖紙編號 01		FIGURE 10.9.4	
DESIGNED BY DJ	APPROVED BY CE52/2007 (HT)	P. BY. APPROVED S.E.L.	
DRAWN BY GXH	SCALE 1:1000	<b>PRELIMINARY</b>	
DIMENSIONS IN METRES		© COPYRIGHT RESERVED 版權所有	



Tree planting on northern landfall (OM1,OM4)



NOTE:  
1. FOR NOTES AND LEGEND SEE DRAWING NO. 60044963/E/1A/SK 2.



DATE: 04/05/09

FILES

CUT LINE 5 - 5

CUT LINE 4 - 4

<b>HIGHWAYS DEPARTMENT</b> HONG KONG - ZHUMAI - MACAO BRIDGE HONG KONG PROJECT MANAGEMENT OFFICE	
<b>TUEN MUN - CHEK LAP KOK LINK - INVESTIGATION</b>	
MASTER LANDSCAPE PLAN SHEET 5 OF 13	
<b>MAUNSELL   AECOM</b> Maunsell Consultants Asia Ltd. 茂盛(亞洲)工程顧問有限公司	
DRG. NO. 圖紙編號	FIGURE 10.9.5
DESIGNED BY 設計人	APPROVED BY CE52/2007 (HT)
DRAWN BY CXH	STATUS PRELIMINARY
SCALE A1 1:1000	COPYRIGHT RESERVED 版權所 有
DIMENSIONS ARE IN METRES	

CUT LINE 11 - 11

813900 E

814100 E

814300 E



820500 N

820300 N

PROPOSED SOUTH VENTILATION BUILDING

FOOTPATH

Tree planting on HKBCF (OM1,OM4)  
- avoid fruit trees to attract birds  
- species under the Hong Kong International Airport Plant Species List

CUT LINE 12 - 12

**NOTE:**

1. FOR NOTES AND LEGEND SEE DRAWING NO. 60044963/E1A/SK2.

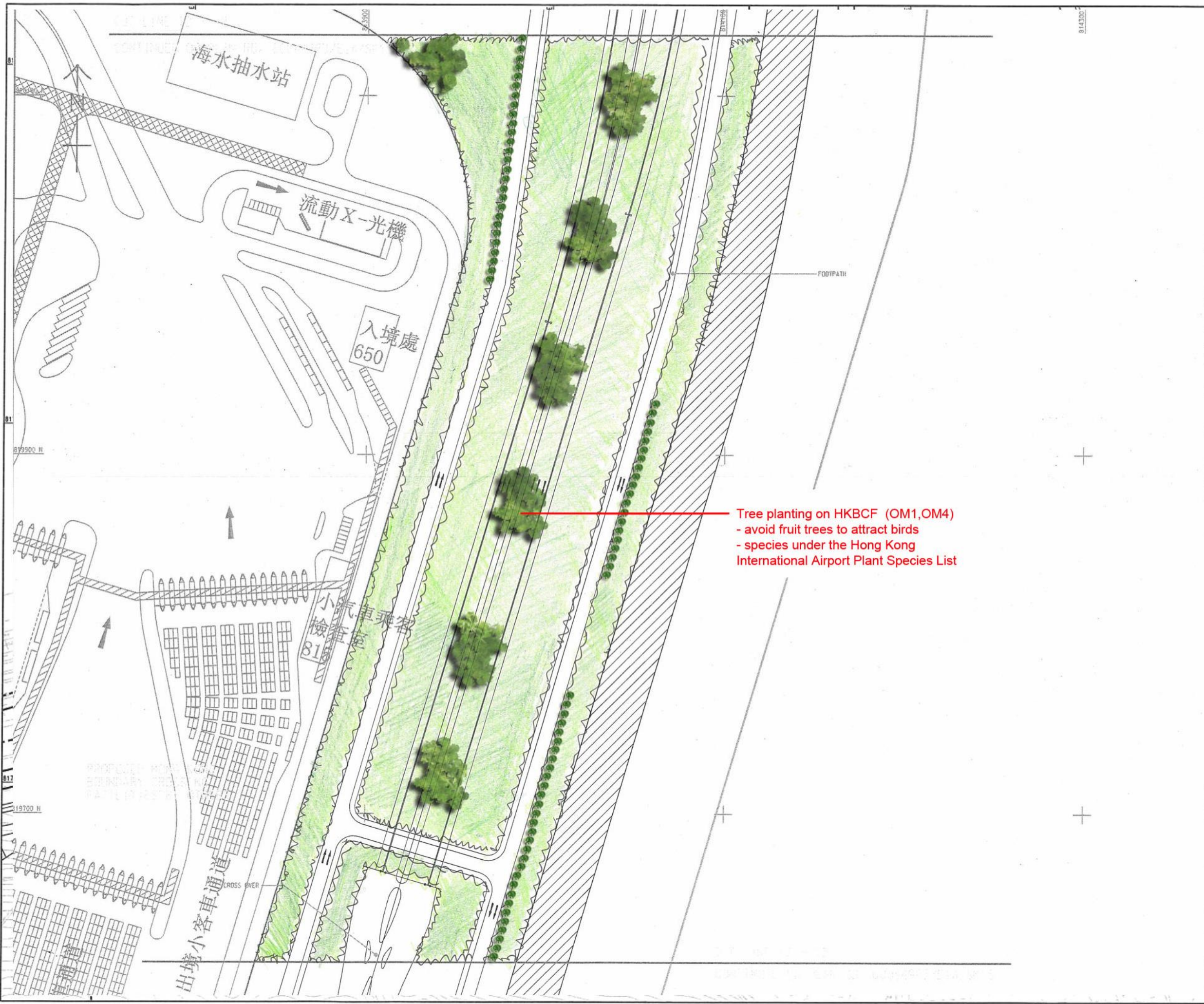
REV. NO.	DESCRIPTION	DATE	BY	CHECKED
<b>HIGHWAYS DEPARTMENT</b> HONG KONG - ZHUHAI - MACAO BRIDGE HONG KONG PROJECT MANAGEMENT OFFICE				
<b>TUEN MUN - CHEK LAP KOK LINK - INVESTIGATION</b>				
<b>MASTER LANDSCAPE PLAN</b>				
SHEET 6 OF 13				
<b>MAUNSELL   AECOM</b> Maunsell Consultants Asia Ltd. 茂盛(亞洲)工程顧問有限公司				
DRG. NO.	FIGURE 10.9.6			
DESIGNED BY	APPROVED BY	P. DIR. APPROVED		
---	CE52/2007 (HY)	[Signature]		
SCALE	PRELIMINARY			
A1 1:1000	© COPYRIGHT RESERVED			
METRES	版權所有			

DATE: 04/05/09

FILES

海水



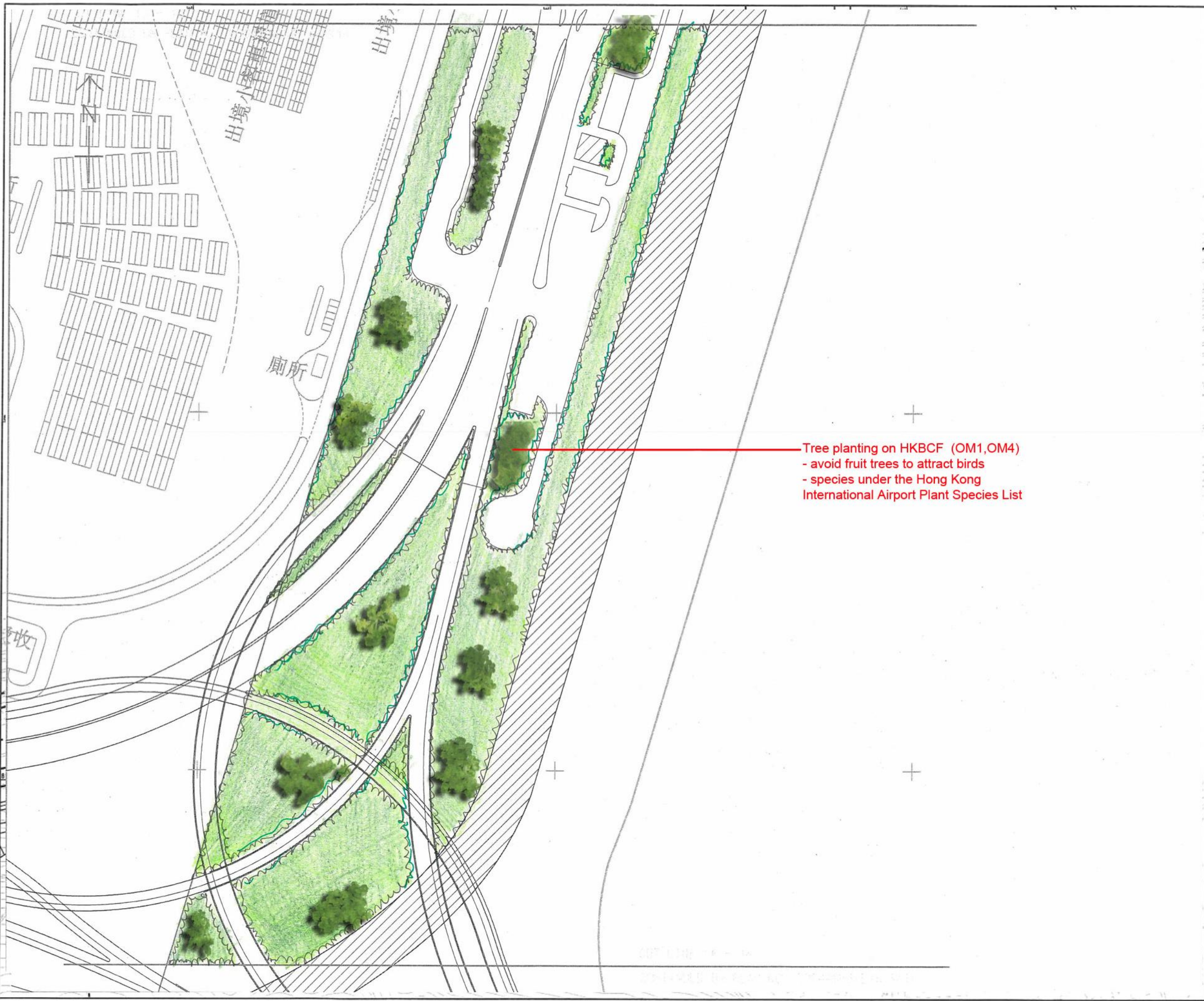


Tree planting on HKBCF (OM1,OM4)  
 - avoid fruit trees to attract birds  
 - species under the Hong Kong International Airport Plant Species List

**NOTE:**  
 1. FOR NOTES AND LEGEND SEE DRAWING NO. 60044963/E1A/SK2.

NO.	DESCRIPTION	DATE	BY
<b>路政署 HIGHWAYS DEPARTMENT</b> 港珠澳大橋香港工程處 Hong Kong - Zhuhai - Macao Bridge Hong Kong Project Management Office			
<b>TUEN MUN - CHEK LAP KOK LINK - INVESTIGATION</b>			
<b>MASTER LANDSCAPE PLAN</b>			
SHEET 7 OF 13			
<b>MAUNSELL   AECOM</b> Maunsell Consultants Asia Ltd. 茂業(亞洲)工程顧問有限公司			
DRG. NO.	FIGURE 10.9.7		
DESIGNED BY	APPROVED BY	P. BY APPROVED	
	CE52/2007 (HY)		
DRAWN BY	SCALE	PRELIMINARY	
GXH	A1 1:1000		
DATE	PROVISION NO.	© COPYRIGHT RESERVED	
2005-5-15		茂業 所有	

DATE 2005-5-15



Tree planting on HKBCF (OM1,OM4)  
 - avoid fruit trees to attract birds  
 - species under the Hong Kong  
 International Airport Plant Species List

NOTE:  
 1. FOR NOTES AND LEGEND SEE DRAWING NO. 60044963/E1A/SK2.

SK  
 000000  
 000000  
 DATE 2005-5-15

NO.	DESCRIPTION	REV.	DATE
<b>路政署</b> <b>HIGHWAYS DEPARTMENT</b> 香港機場管理局工程管理部 Hong Kong - Zhuhai - Macao Bridge Hong Kong Project Management Office			
<b>TUEN MUN - CHEK LAP KOK LINK - INVESTIGATION</b>			
<b>MASTER LANDSCAPE PLAN</b>			
SHEET 8 OF 13			
<b>MAUNSELL   AECOM</b> Maunsell Consultants Asia Ltd. 茂盛(亞洲)工程顧問有限公司			
DRG. NO.	FIGURE 10.9.8		
DESIGNED BY	DESIGNED NO.	P. BY APPROVED	
---	CE52/2007 (HY)	---	
DRAWN BY	STATUS	DATE	
DXH	---	---	
SCALE	PRELIMINARY		
A1 1:1000	---		
UNIT	METRES		
---	COPYRIGHT RESERVED		
---	版權所有		

Tree planting on HKBCF (OM1,OM4)  
 - avoid fruit trees to attract birds  
 - species under the Hong Kong  
 International Airport Plant Species List

**NOTE:**

1. FOR NOTES AND LEGEND SEE DRAWING NO. 60044963/E1A/SK2.

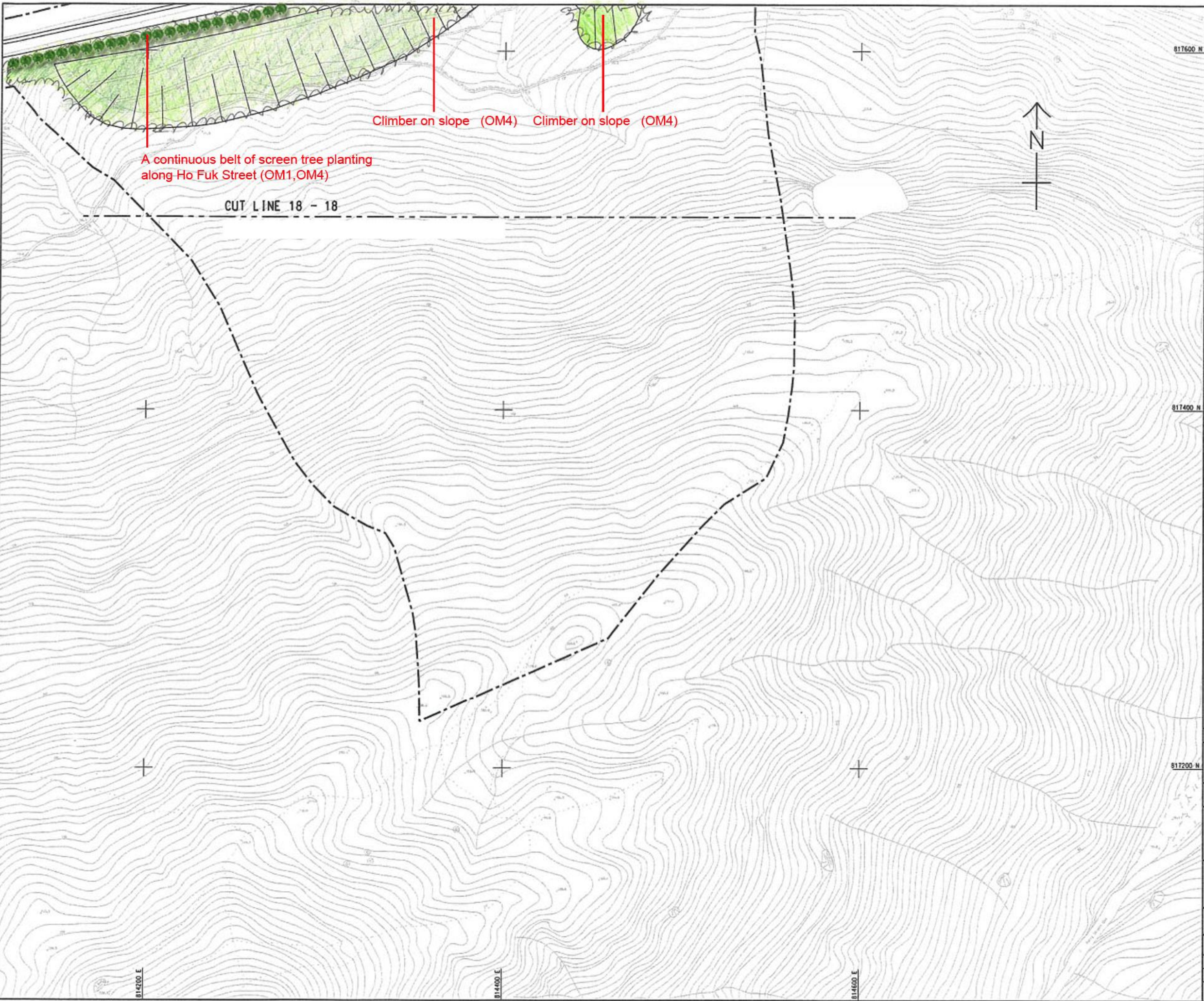


PROPOSED TUEN MUN - CHEK LAP KOK LINK SOUTHBOUND

PROPOSED TUEN MUN - CHEK LAP KOK LINK NORTHBOUND

REV. NO.	DESCRIPTION	REV. DATE	BY
<p><b>HIGHWAYS DEPARTMENT</b>          路政署          香港機場管理局          Hong Kong - Zhuhai - Macao Bridge          Hong Kong Project Management Office</p>			
<p><b>TUEN MUN - CHEK LAP KOK LINK - INVESTIGATION</b></p>			
<p>MASTER LANDSCAPE PLAN</p>			
<p>SHEET 9 OF 13</p>			
<p><b>MAUNSELL   AECOM</b>          Maunsell Consultants Asia Ltd.          茂業(亞洲)工程顧問有限公司</p>			
<p>DRG. NO. 圖紙編號</p>		<p>FIGURE 10.9.9</p>	
<p>DESIGNED BY 設計</p>	<p>APPROVED BY 校核</p>	<p>P. BY APPROVED 日期</p>	<p>DATE 日期</p>
<p>DESIGN BY 設計</p>	<p>SCALE 比例</p>	<p>PRELIMINARY</p>	
<p>DATE 日期</p>	<p>SCALE 比例</p>	<p>© COPYRIGHT RESERVED 版權所有</p>	

DATE 2005-5-15



**NOTE:**  
 1. FOR NOTES AND LEGEND SEE DRAWING NO. 60044963/E1A/SK2.

REV.	DESCRIPTION	DATE	BY	CHECKED

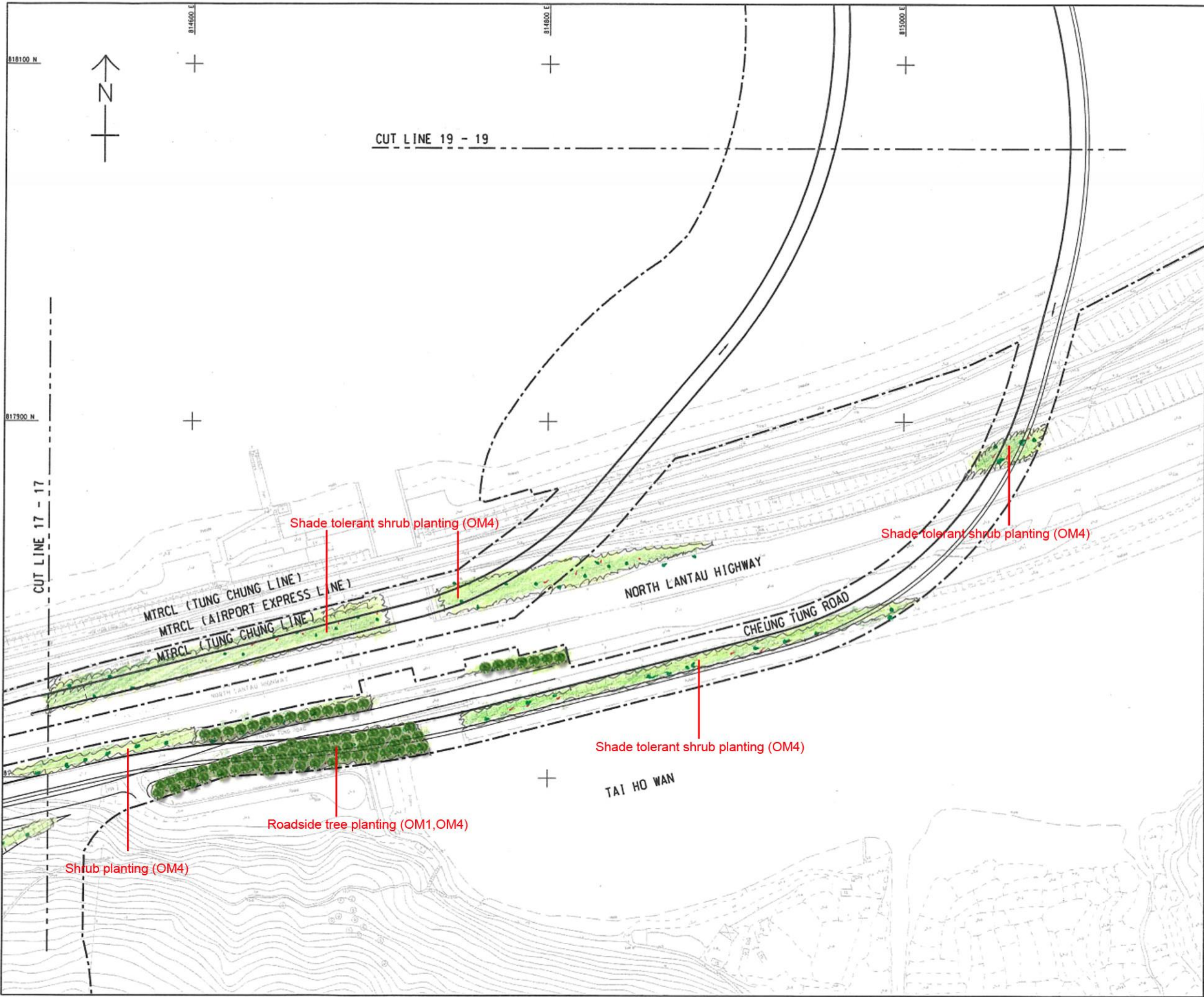
**路政署 HIGHWAYS DEPARTMENT**  
 港島東區交通工程處  
 Hong Kong - Zhuhai - Maкао Bridge  
 Hong Kong Project Management Office

**TUEN MUN - CHEK LAP KOK LINK - INVESTIGATION**

MASTER LANDSCAPE PLAN  
 SHEET 10 OF 13

**MAUNSELL | AECOM**  
 Maunsell Consultants Asia Ltd.  
 茂盛(亞洲)工程顧問有限公司

DRG. NO. 圖紙編號	FIGURE 10.9.10	
DESIGNED BY 設計	APPROVED BY 校核	P. No. APPROVED 圖章
DRAWN BY 繪圖	DATE 日期	
SCALE 比例	PRELIMINARY	
DIMENSIONS ARE IN 尺寸	© COPYRIGHT RESERVED 版權所有	



**NOTE:**  
1. FOR NOTES AND LEGEND SEE DRAWING NO. 6004963/E1A/SK2.

REV. NO.	DESCRIPTION	DATE	BY

**路政署 HIGHWAYS DEPARTMENT**  
**香港路政工程處**  
 Hong Kong - Zhuhai - Macao Bridge  
 Hong Kong Project Management Office

**TUEN MUN - CHEK LAP KOK LINK - INVESTIGATION**

**MASTER LANDSCAPE PLAN**  
SHEET 11 OF 13

**MAUNSELL | AECOM**  
 Munsell Consultants Asia Ltd.  
 茂業(亞洲)工程顧問有限公司

DRG. NO. **圖紙編號** **FIGURE 10.9.11**

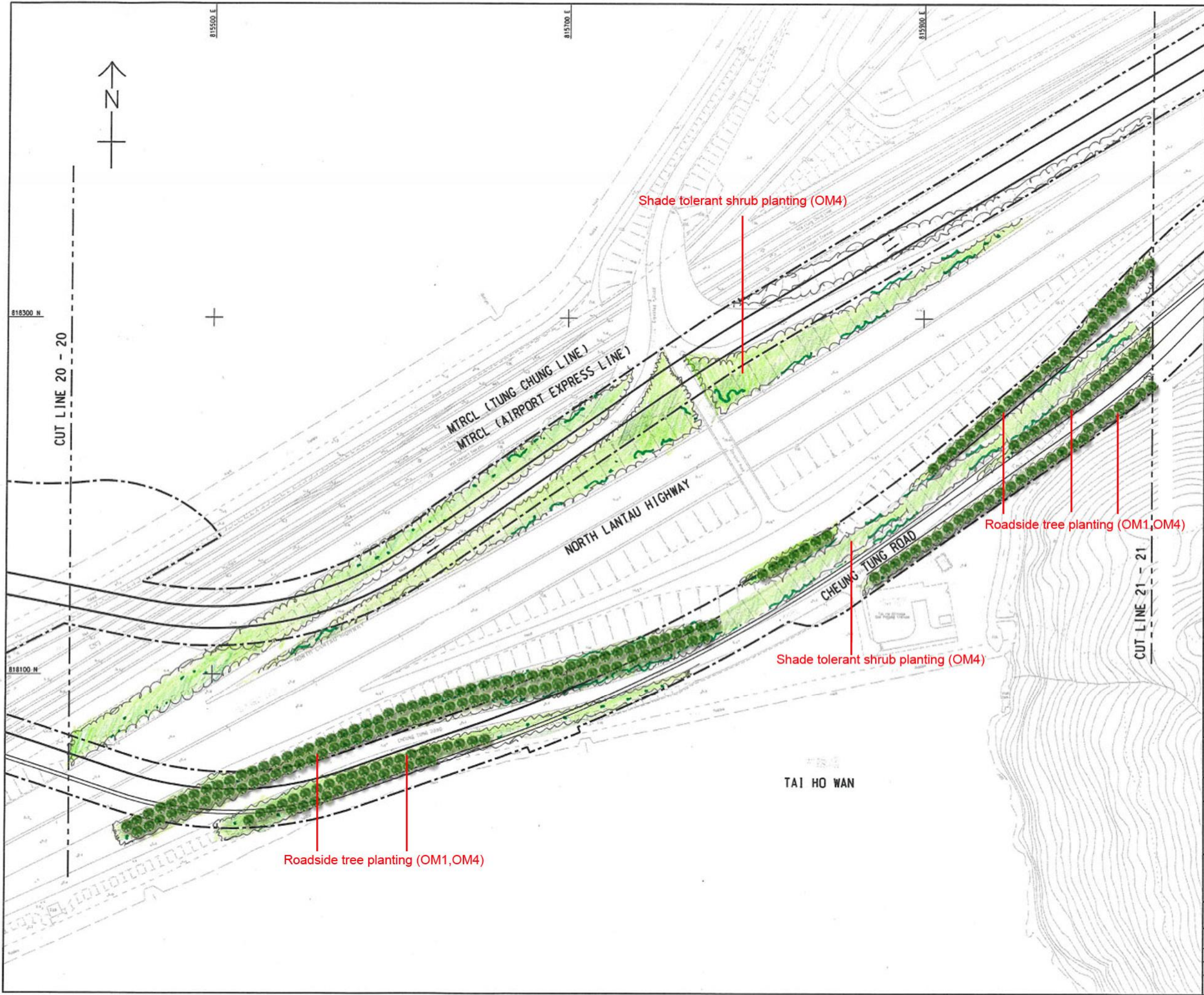
DESIGNED BY 設計	APPROVED BY 校核	DATE 日期

SCALE **比例尺** **1:1000**

**PRELIMINARY**

DATE **日期** **2009-5-15**

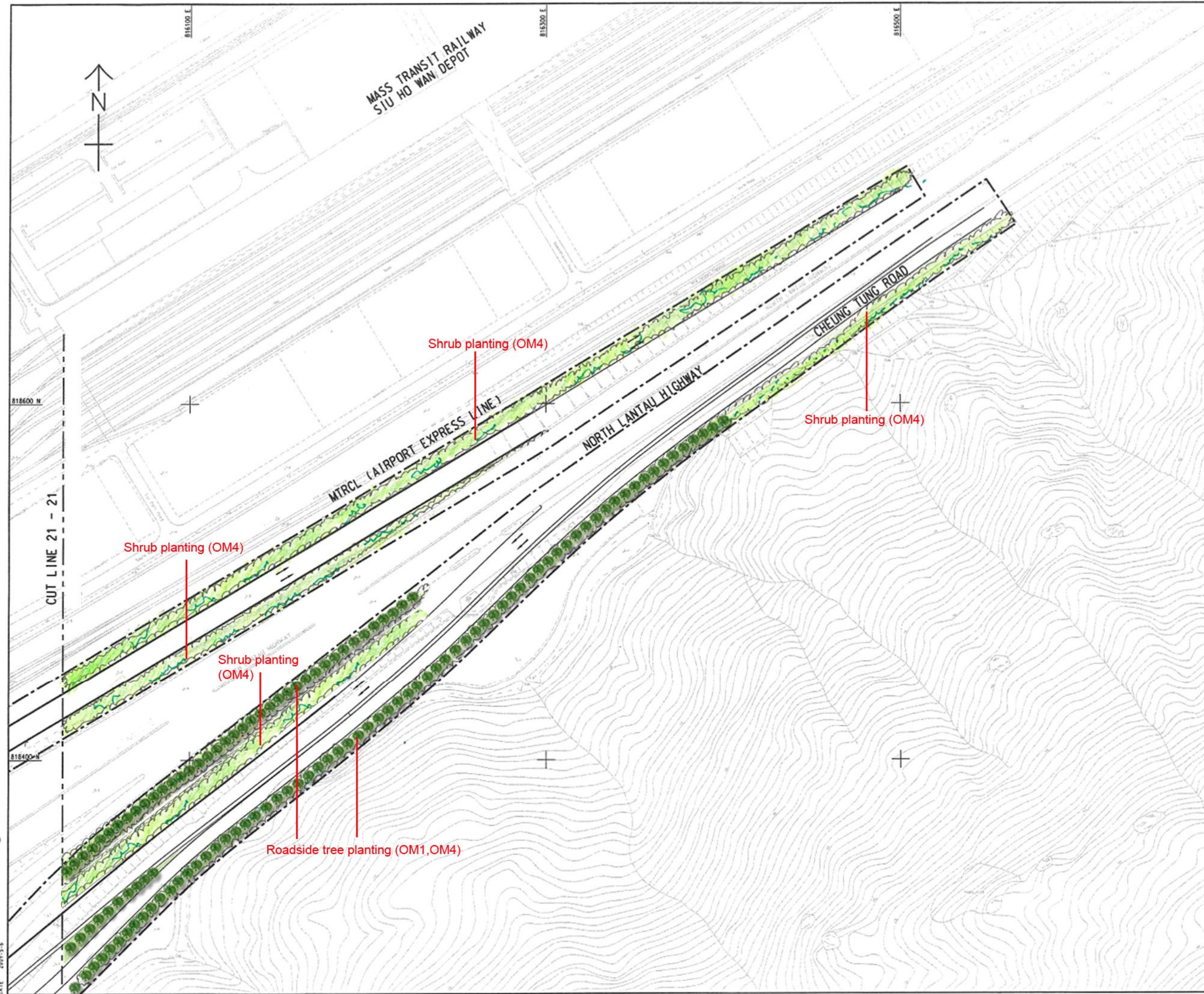
© COPYRIGHT RESERVED  
 版權所有



**NOTE:**  
 1. FOR NOTES AND LEGEND SEE DRAWING NO. 60044963/E1A/SK2.

NO.	DESCRIPTION	DATE	BY
1	ISSUED FOR TENDER		
<b>路政署 HIGHWAYS DEPARTMENT</b> 港珠澳大橋香港段工程管理處 Hong Kong - Zhuhai - Macao Bridge Hong Kong Project Management Office			
<b>TUEN MUN - CHEK LAP KOK LINK - INVESTIGATION</b>			
<b>MASTER LANDSCAPE PLAN</b>			
SHEET 12 OF 13			
<b>MAUNSELL   AECOM</b> Mounsell Consultants Asia Ltd. 茂盛(亞洲)工程顧問有限公司			
DRG. NO. 圖紙編號	FIGURE 10.9.12		
DESIGNED BY 設計	APPROVED BY 校核	DATE 日期	SCALE 比例
GXH	CE52/2007 (HT)		1:1000
SCALE 比例	PRELIMINARY		
APPROVED BY 校核	© COPYRIGHT RESERVED 版權所有		

DATE: 2009-5-6



**NOTE:**

1. FOR NOTES AND LEGEND SEE DRAWING NO. 6004963/E1A/SK2.

NO.	DESCRIPTION	DATE	BY
<p><b>路政署 HIGHWAYS DEPARTMENT</b>          運輸及交通局工程處          Hong Kong - Zhuhai - Macao Bridge          Hong Kong Project Management Office</p>			
<p><b>TUEN MUN - CHEK LAP KOK LINK - INVESTIGATION</b></p>			
<p>MASTER LANDSCAPE PLAN</p>			
<p>SHEET 13 OF 13</p>			
<p><b>MAUNSELL   AECOM</b>          Maunsell Consultants Asia Ltd.          茂盛(亞洲)工程顧問有限公司</p>			
DRG. NO.	FIGURE 10.9.13		
DESIGNED BY	PROJECT NO.	P. BY / APPROVED	
---	CES2/2007 (HY)	---	
DRAWN BY	SCALE	STAGE	
GEN	A1 1:1000	PRELIMINARY	
DATE	COPYRIGHT RESERVED		
2009.5.4	茂盛 所有		