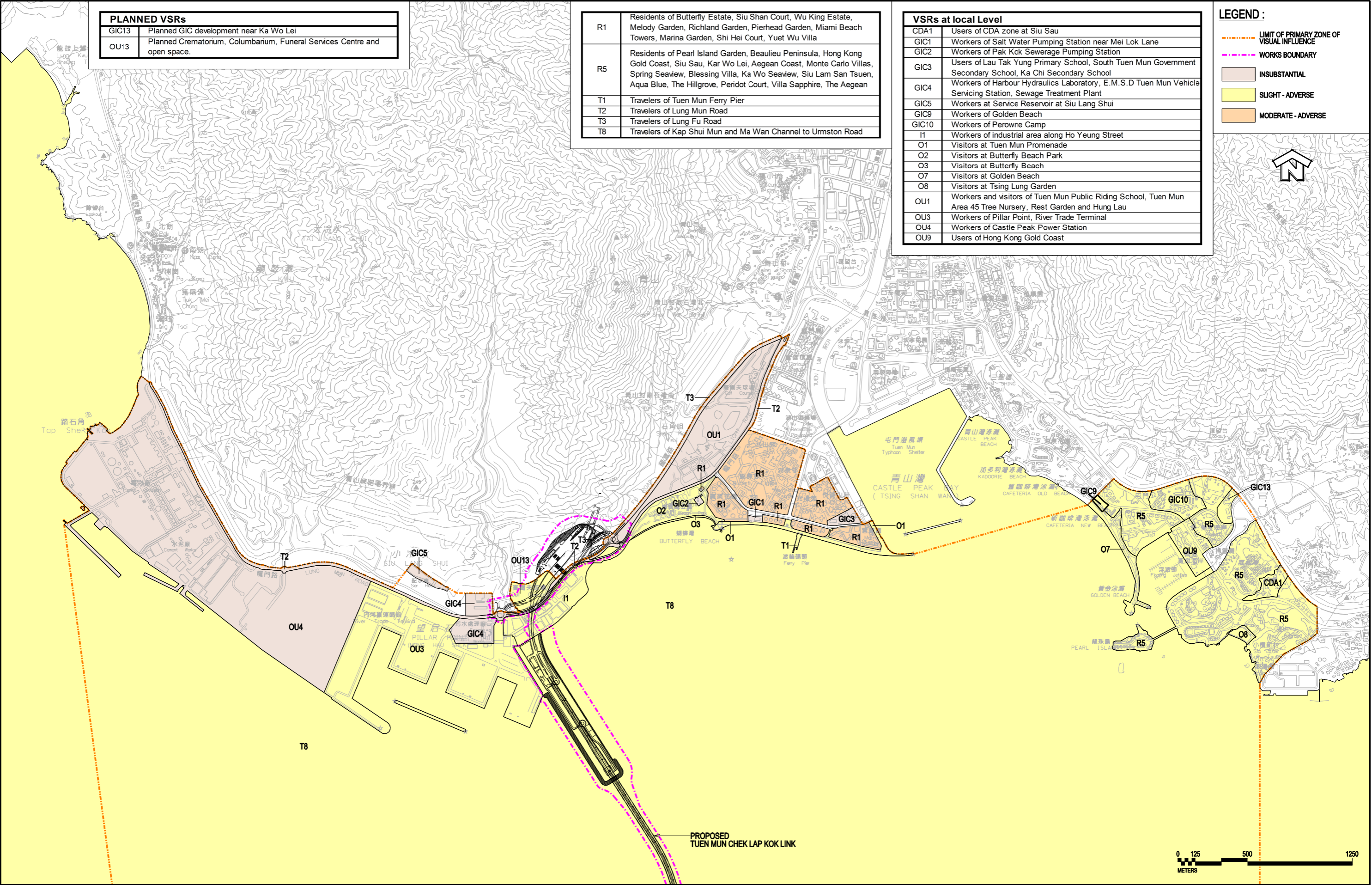


PLANNED VSRs	
GIC13	Planned GIC development near Ka Wo Lei
OU13	Planned Crematorium, Columbarium, Funeral Services Centre and open space.

R1	Residents of Butterfly Estate, Siu Shan Court, Wu King Estate, Melody Garden, Richland Garden, Pierhead Garden, Miami Beach Towers, Marina Garden, Shi Hei Court, Yuet Wu Villa
R5	Residents of Pearl Island Garden, Beaulieu Peninsula, Hong Kong Gold Coast, Siu Sau, Kar Wo Lei, Aegean Coast, Monte Carlo Villas, Spring Seaview, Blessing Villa, Ka Wo Seaview, Siu Lam San Tsuen, Aqua Blue, The Hillgrove, Peridot Court, Villa Sapphire, The Aegean
T1	Travelers of Tuen Mun Ferry Pier
T2	Travelers of Lung Mun Road
T3	Travelers of Lung Fu Road
T8	Travelers of Kap Shui Mun and Ma Wan Channel to Urmston Road

VSRs at local Level	
CDA1	Users of CDA zone at Siu Sau
GIC1	Workers of Salt Water Pumping Station near Mei Lok Lane
GIC2	Workers of Pak Kok Sewerage Pumping Station
GIC3	Users of Lau Tak Yung Primary School, South Tuen Mun Government Secondary School, Ka Chi Secondary School
GIC4	Workers of Harbour Hydraulics Laboratory, E.M.S.D Tuen Mun Vehicle Servicing Station, Sewage Treatment Plant
GIC5	Workers at Service Reservoir at Siu Lang Shui
GIC9	Workers of Golden Beach
GIC10	Workers of Perowre Camp
I1	Workers of industrial area along Ho Yeung Street
O1	Visitors at Tuen Mun Promenade
O2	Visitors at Butterfly Beach Park
O3	Visitors at Butterfly Beach
O7	Visitors at Golden Beach
O8	Visitors at Tsing Lung Garden
OU1	Workers and visitors of Tuen Mun Public Riding School, Tuen Mun Area 45 Tree Nursery, Rest Garden and Hung Lau
OU3	Workers of Pillar Point, River Trade Terminal
OU4	Workers of Castle Peak Power Station
OU9	Users of Hong Kong Gold Coast

LEGEND :	
	LIMIT OF PRIMARY ZONE OF VISUAL INFLUENCE
	WORKS BOUNDARY
	INSUBSTANTIAL
	SLIGHT - ADVERSE
	MODERATE - ADVERSE



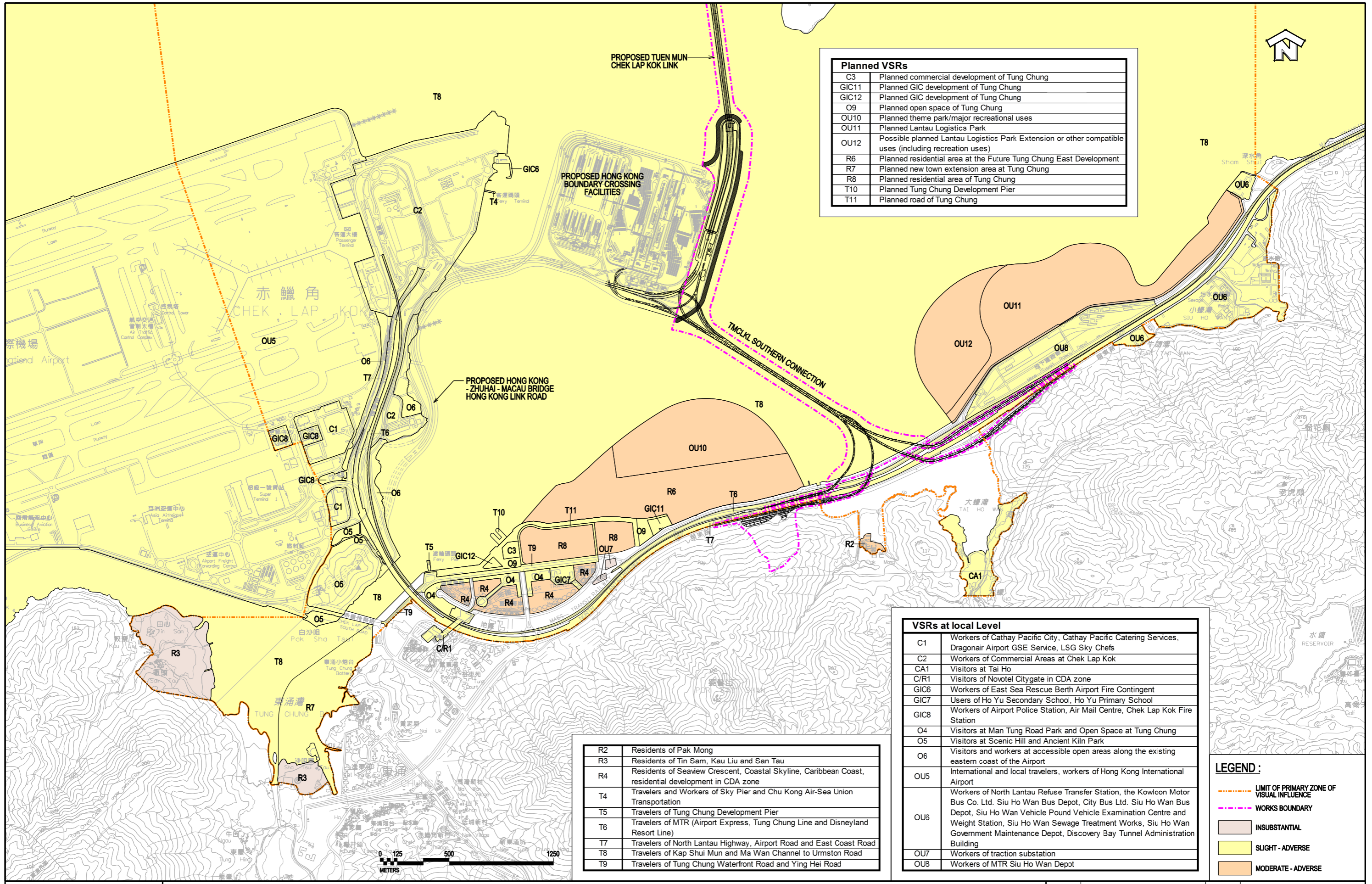
Plotting By: 4/8/2009
 PLOT SCALE: 1:25

AECOM

AGREEMENT NO. CE 52/2007(HY)
 TUEN MUN - CHEK LAP KOK LINK - INVESTIGATION
**RESIDUAL IMPACTS ON VSRs AT LOCAL LEVEL WITH
 MITIGATION MEASURES IN YEAR 10**

SHEET 1 OF 2

SCALE	1:25000	DATE	MAY 2009
CHECK	E.L.	DRAWN	F.L.
JOB No.	60044963	DRAWING No.	FIGURE 10.6.3.1
		REV	--



Planned VSRs	
C3	Planned commercial development of Tung Chung
GIC11	Planned GIC development of Tung Chung
GIC12	Planned GIC development of Tung Chung
O9	Planned open space of Tung Chung
OU10	Planned theme park/major recreational uses
OU11	Planned Lantau Logistics Park
OU12	Possible planned Lantau Logistics Park Extension or other compatible uses (including recreation uses)
R6	Planned residential area at the Future Tung Chung East Development
R7	Planned new town extension area at Tung Chung
R8	Planned residential area of Tung Chung
T10	Planned Tung Chung Development Pier
T11	Planned road of Tung Chung

VSRs at local Level	
C1	Workers of Cathay Pacific City, Cathay Pacific Catering Services, Dragonair Airport GSE Service, LSG Sky Chefs
C2	Workers of Commercial Areas at Chek Lap Kok
CA1	Visitors at Tai Ho
C/R1	Visitors of Novotel Citygate in CDA zone
GIC6	Workers of East Sea Rescue Berth Airport Fire Contingent
GIC7	Users of Ho Yu Secondary School, Ho Yu Primary School
GIC8	Workers of Airport Police Station, Air Mail Centre, Chek Lap Kok Fire Station
O4	Visitors at Man Tung Road Park and Open Space at Tung Chung
O5	Visitors at Scenic Hill and Ancient Kiln Park
O6	Visitors and workers at accessible open areas along the existing eastern coast of the Airport
OU5	International and local travelers, workers of Hong Kong International Airport
OU8	Workers of North Lantau Refuse Transfer Station, the Kowloon Motor Bus Co. Ltd. Siu Ho Wan Bus Depot, City Bus Ltd. Siu Ho Wan Bus Depot, Siu Ho Wan Vehicle Pound Vehicle Examination Centre and Weight Station, Siu Ho Wan Sewage Treatment Works, Siu Ho Wan Government Maintenance Depot, Discovery Bay Tunnel Administration Building
OU7	Workers of traction substation
OU8	Workers of MTR Siu Ho Wan Depot

R2	Residents of Pak Mong
R3	Residents of Tin Sam, Kau Liu and San Tau
R4	Residents of Seaview Crescent, Coastal Skyline, Caribbean Coast, residential development in CDA zone
T4	Travelers and Workers of Sky Pier and Chu Kong Air-Sea Union Transportation
T5	Travelers of Tung Chung Development Pier
T6	Travelers of MTR (Airport Express, Tung Chung Line and Disneyland Resort Line)
T7	Travelers of North Lantau Highway, Airport Road and East Coast Road
T8	Travelers of Kap Shui Mun and Ma Wan Channel to Urnston Road
T9	Travelers of Tung Chung Waterfront Road and Ying Hei Road

LEGEND :

- LIMIT OF PRIMARY ZONE OF VISUAL INFLUENCE
- WORKS BOUNDARY
- INSUBSTANTIAL
- SLIGHT - ADVERSE
- MODERATE - ADVERSE



AGREEMENT NO. CE 52/2007(HY)
 TUEN MUN - CHEK LAP KOK LINK - INVESTIGATION
**RESIDUAL IMPACTS ON VSRs AT LOCAL LEVEL WITH
 MITIGATION MEASURES IN YEAR 10**

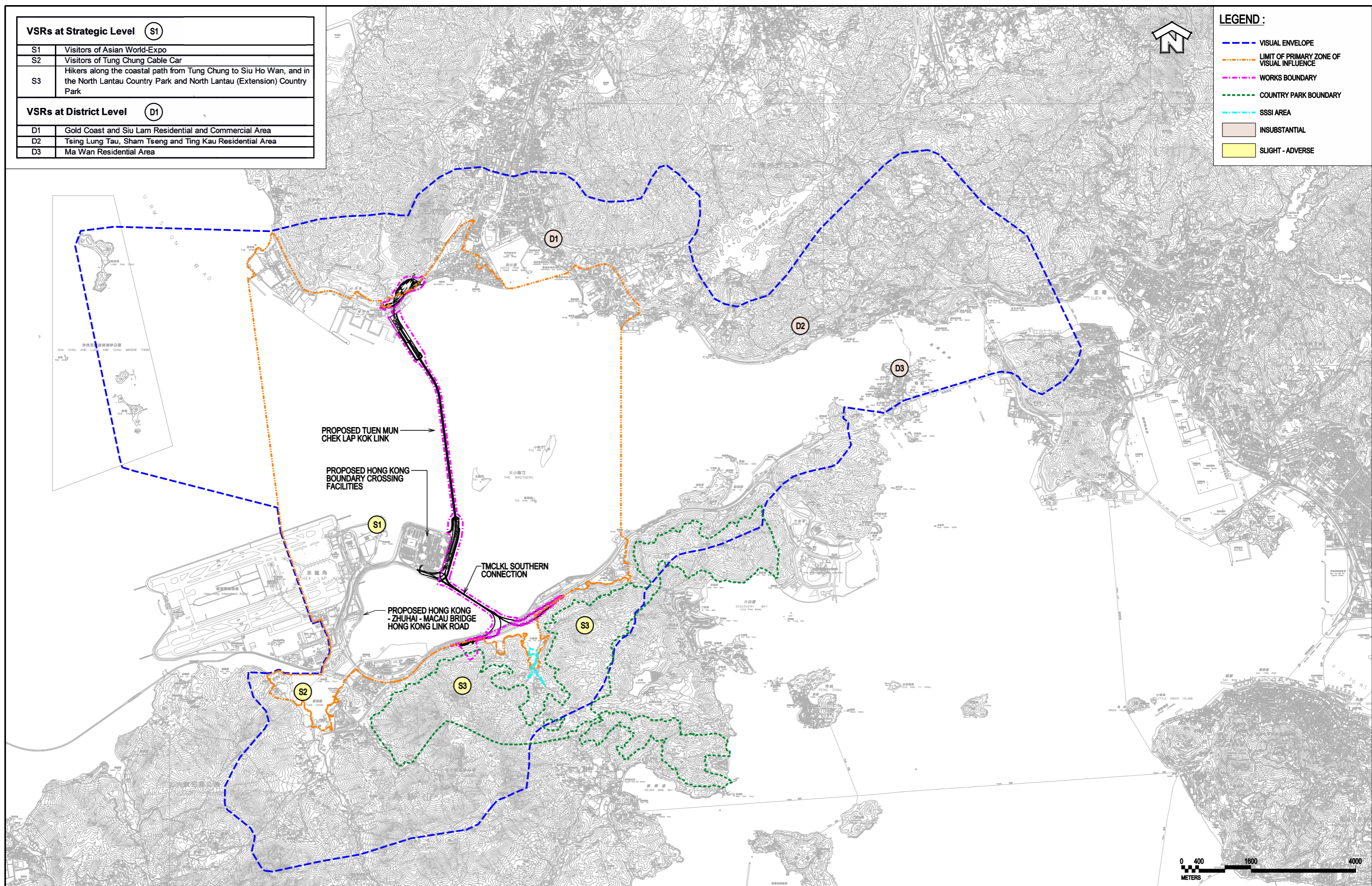
SCALE	1:25000	DATE	MAY 2009
CHECK	E.L.	DRAWN	F.L.
JOB No.	60044963	DRAWING No.	FIGURE 10.6.3.2
		REV	--

VSRs at Strategic Level (S1)	
S1	Visitors of Asian World-Expo
S2	Visitors of Tung Chung Cable Car
S3	Hikers along the coastal path from Tung Chung to Siu Ho Wan, and in the North Lantau Country Park and North Lantau (Extension) Country Park

VSRs at District Level (D1)	
D1	Gold Coast and Siu Lam Residential and Commercial Area
D2	Tsing Lung Tau, Sham Tseng and Ting Kau Residential Area
D3	Ma Wan Residential Area

LEGEND :

- VISUAL ENVELOPE
- LIMIT OF PRIMARY ZONE OF VISUAL INFLUENCE
- WORKS BOUNDARY
- COUNTRY PARK BOUNDARY
- SSSI AREA
- INSUBSTANTIAL
- SLIGHT - ADVERSE



Plotting By: 21/7/2009
 PLOT SCALE: 1:80

AECOM

AGREEMENT NO. CE 52/2007(HY)
 TUEN MUN - CHEK LAP KOK LINK - INVESTIGATION
**RESIDUAL IMPACTS ON VSRs AT STRATEGIC AND DISTRICT LEVEL WITH
 MITIGATION MEASURES IN YEAR 10**

SCALE	1:80000	DATE	MAY 2009
CHECK	E.L.	DRAWN	F.L.
JOB No.	60044963	DRAWING No.	FIGURE 10.6.4
		REV	--