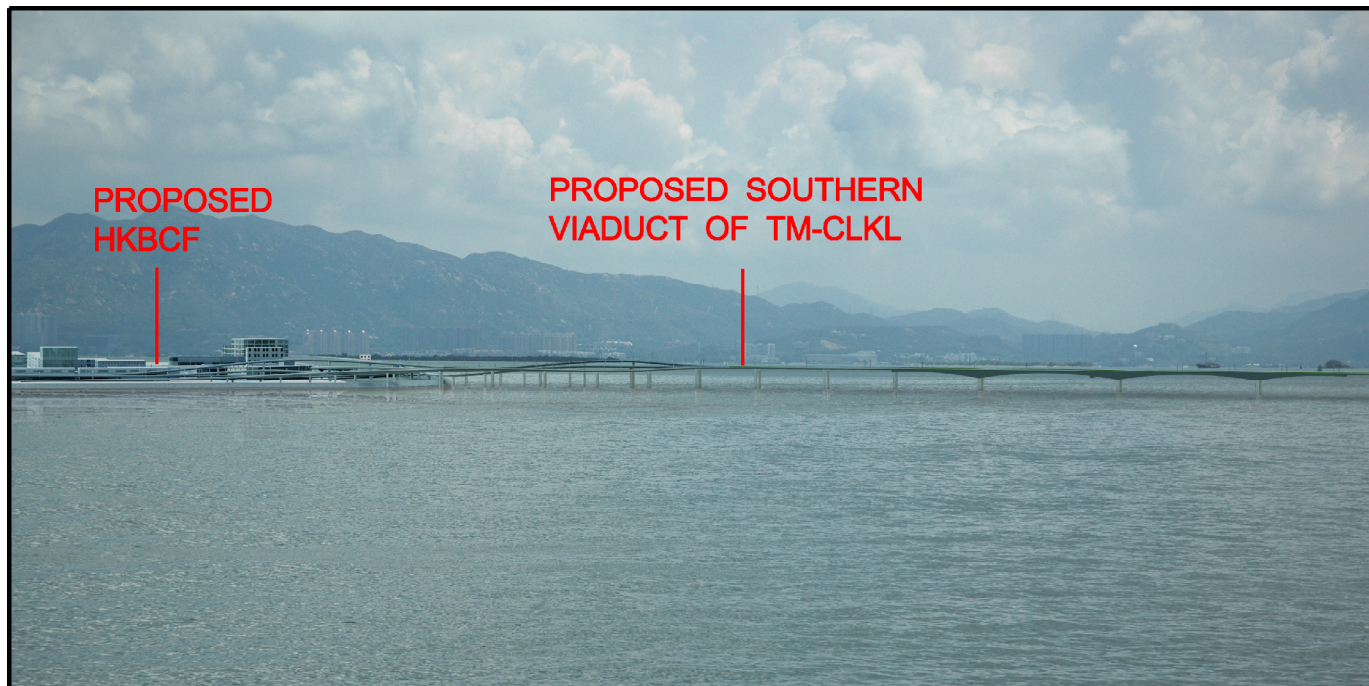




EXISTING CONDITION



DAY 1 WITH MITIGATION MEASURES



DAY 1 WITHOUT MITIGATION MEASURES



10 YEARS WITH MITIGATION MEASURES

Plotting By: IDATES  
PLOT SCALE: ESCALESHORTS

**AECOM**

AGREEMENT NO. CE 52/2007(HY)  
TUEN MUN - CHEK LAP KOK LINK - INVESTIGATION

VIEWPOINT NO. G10 PHOTOMONTAGE FROM PLANNED THEME PARK / MAJOR RECREATIONAL USES

SCALE	NTS	DATE	JUL 2009
CHECK	E.L.	DRAWN	H.Q.S.
JOB No.	60044963	DRAWING No.	FIGURE 10.7.10A
		REV	--





EXISTING CONDITION



DAY 1 WITH MITIGATION MEASURES



DAY 1 WITHOUT MITIGATION MEASURES



10 YEARS WITH MITIGATION MEASURES

Plotting By: IDATES  
PLOT SCALE: ESCALESHORTS

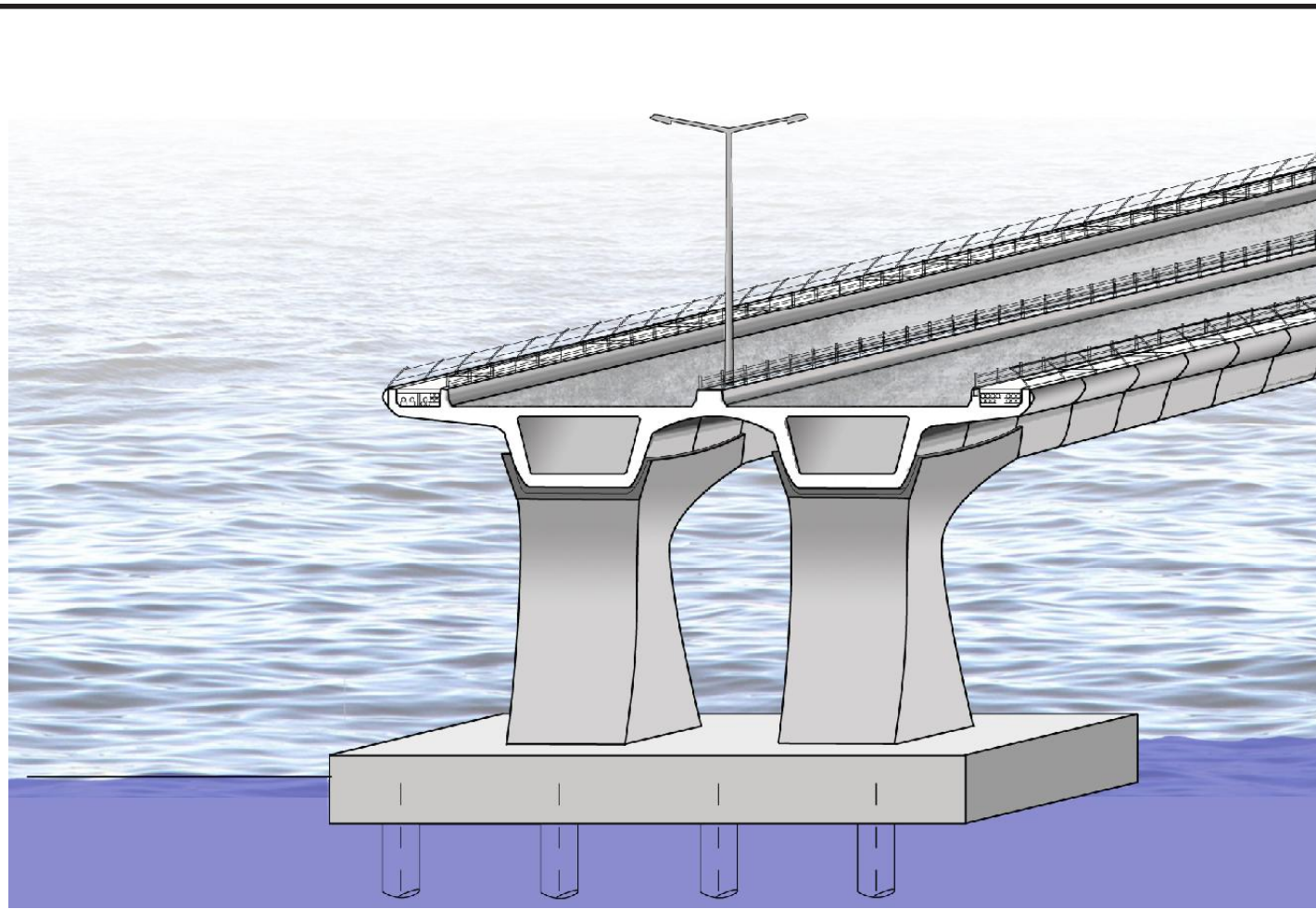
**AECOM**

AGREEMENT NO. CE 52/2007(HY)  
TUEN MUN - CHEK LAP KOK LINK - INVESTIGATION

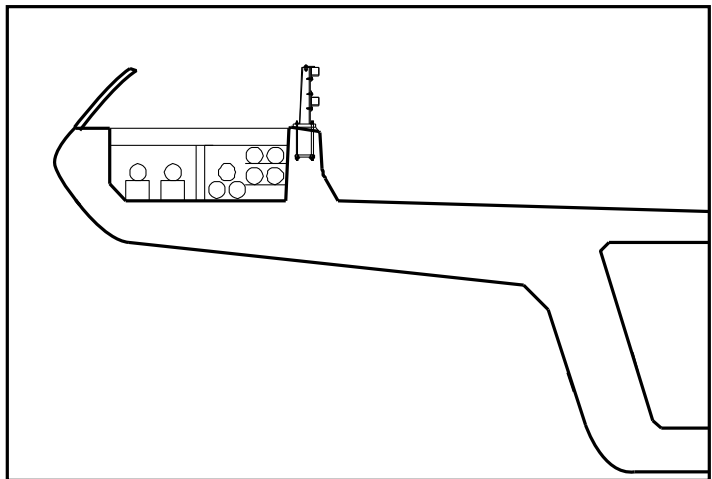
VIEWPOINT NO. G11 PHOTOMONTAGE FORM PLANNED LANTAU LOGISTICS PARK

SCALE	NTS	DATE	JUL 2009
CHECK	E.L.	DRAWN	H.Q.S.
JOB No.	60044963	DRAWING No.	FIGURE 10.7.11A
		REV	--

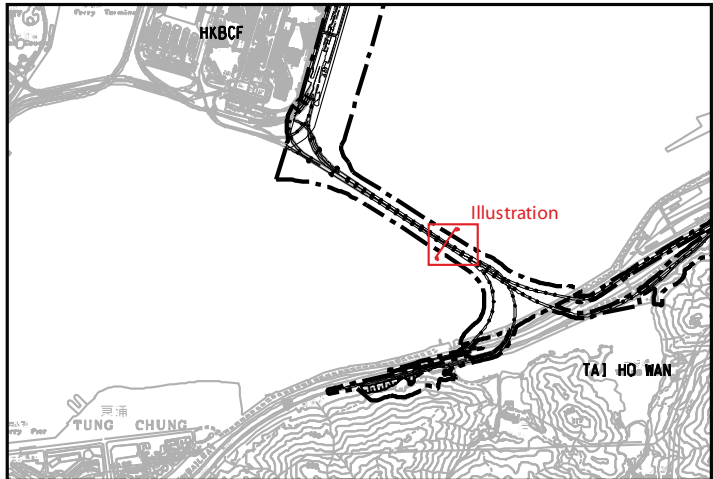




Isometric view



Blowup section for parapet



Keyplan



Possible example of highways lighting



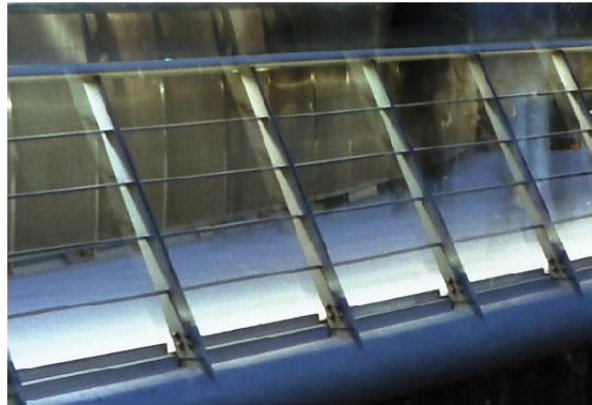
Possible example of parapet treatment



Perspective view from sea level



Possible visual enhancement - On railing design and colour treatment



Possible example of parapet treatment



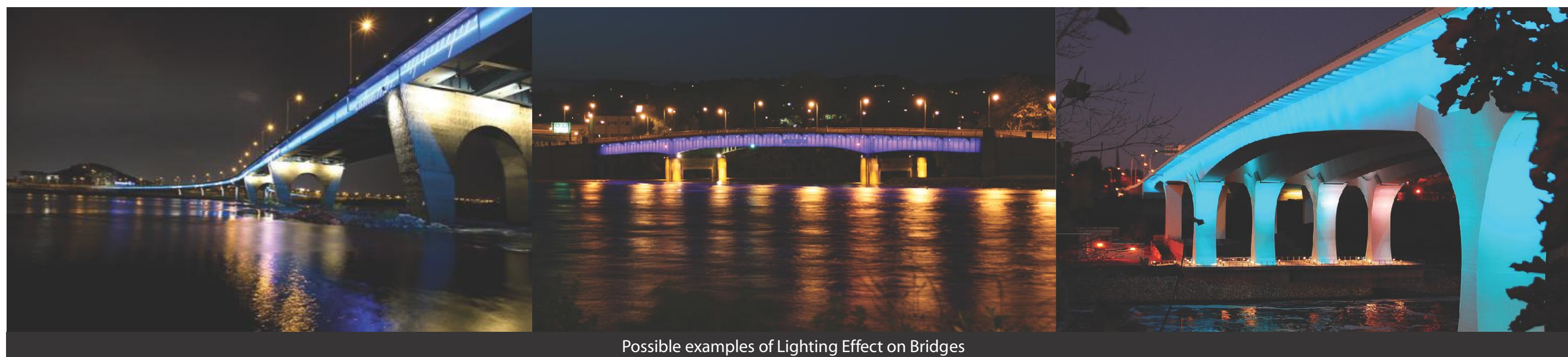
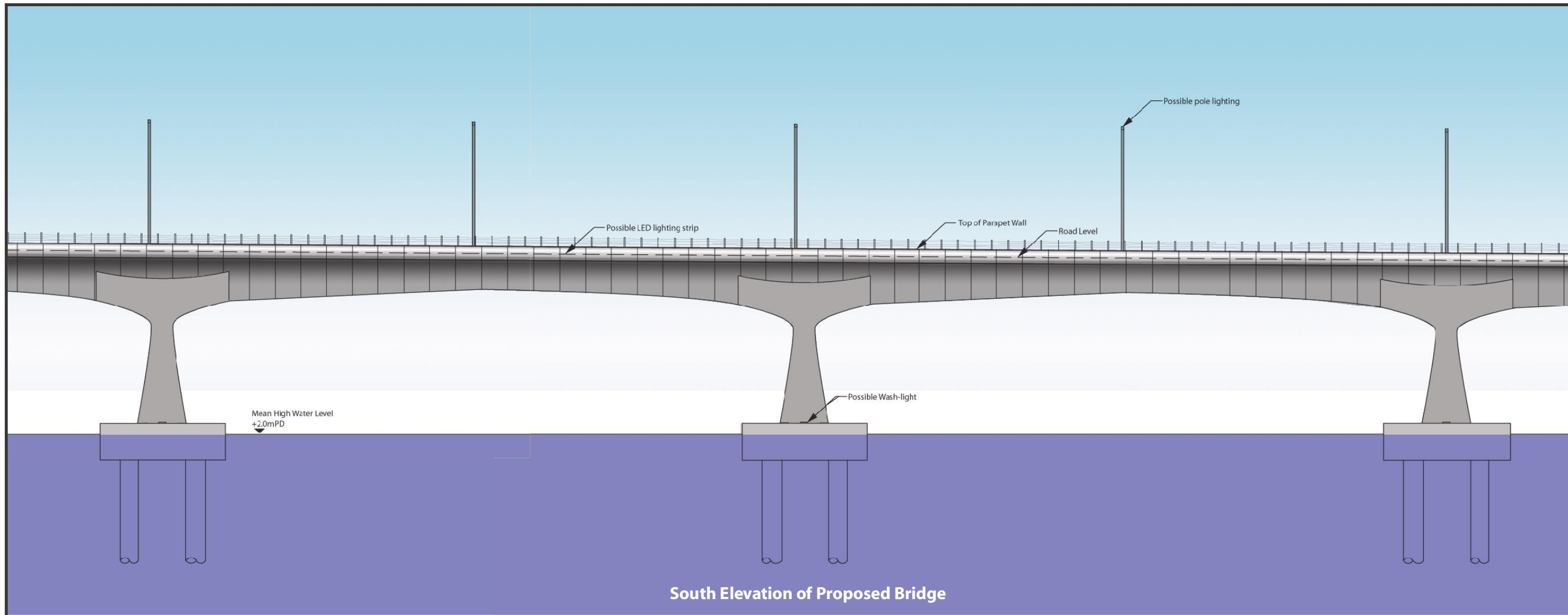
Possible example of treatment for utility trough cover

AECOM

AGREEMENT NO. CE 52/2007(HY)  
 TUEN MUN - CHEK LAP KOK LINK - INVESTIGATION  
 Aesthetic Design Treatment on Viaduct (1 of 2)

SCALE	N.T.S.	DATE	JULY 2009
CHECK	----	DRAWN	----
JOB No.	60044963	DRAWING No.	10.8.1
		REV	





**AECOM**

AGREEMENT NO. CE 52/2007(HY)  
 TUEN MUN - CHEK LAP KOK LINK - INVESTIGATION  
 Aesthetic Design Treatment on Viaduct (2 of 2)

SCALE	N.T.S.	DATE	JULY 2009
CHECK	----	DRAWN	----
JOB No.	60044963	DRAWING No.	10.8.2
		REV	