

- NOTES:**
1. THIS DRAWING TO BE READ IN CONJUNCTION WITH DRAWINGS NO. SK 3 - SK 23.
  2. ALL DIMENSIONS ARE IN METRES UNLESS NOTED OTHERWISE.
  3. ALL LEVELS ARE IN METRES AND REFER TO PRINCIPAL DATUM.
  4. ALL CO-ORDINATES ARE IN ACCORDANCE WITH HK(1980) GAUSS CO-ORDINATE SYSTEM.
  5. DETAILS INCLUDING DIMENSIONS, LEVELS, DESCRIPTIONS, LOCATIONS, ETC GIVEN FOR EXISTING ROADS, FOOTPATHS, BOX CULVERTS, CHAIN LINK FENCE, ETC. ARE INDICATIVE ONLY. THE CONTRACTOR SHALL VERIFY THE ACTUAL EXISTING DETAILS ON SITE.

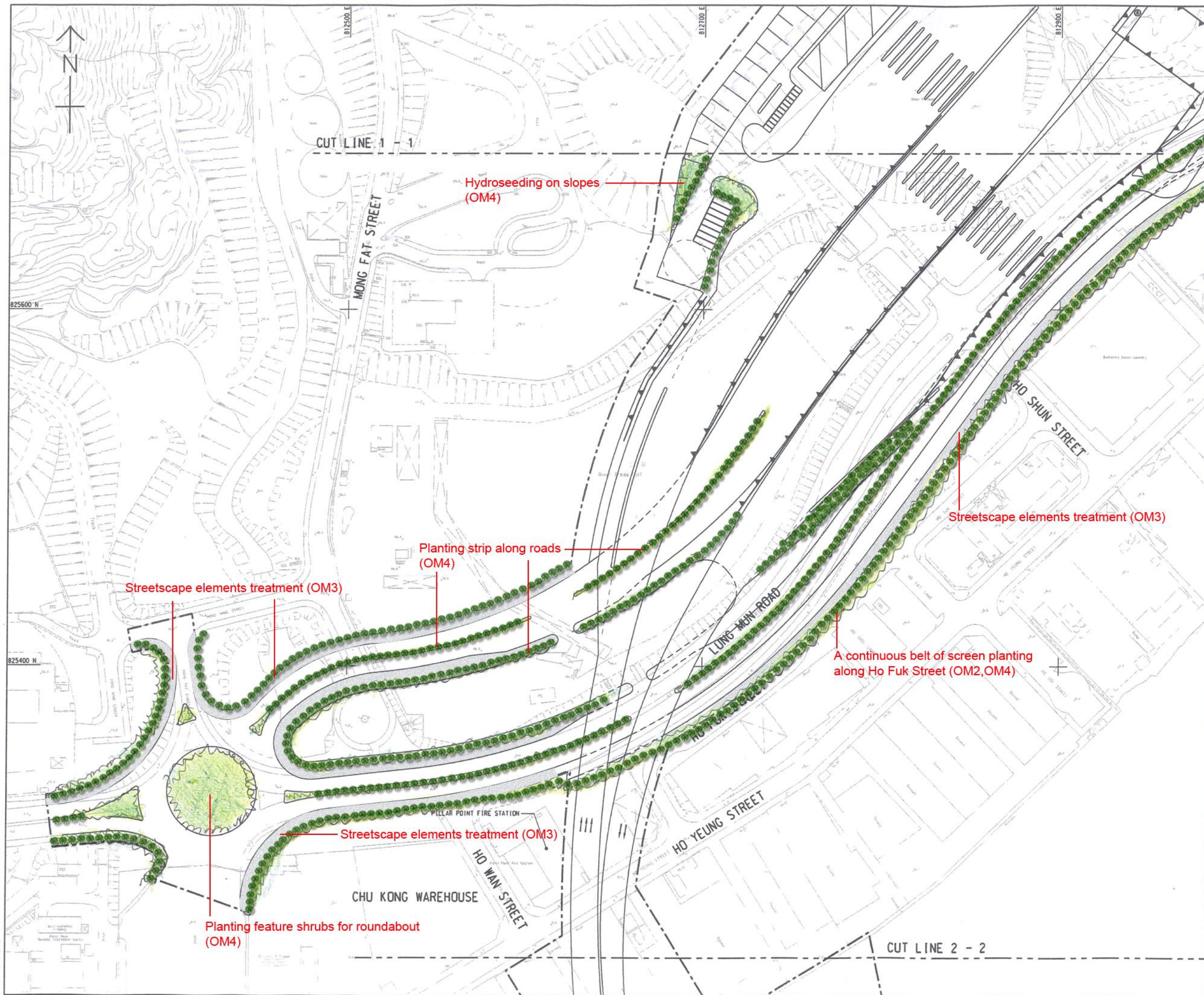
- LEGEND:**
- LIMIT OF WORKS AREA
  - (-10.5) FINISHED TUNNEL LEVEL
  - (22.5) FINISHED AT-GRADE/ELEVATED ROAD LEVEL
  - 22.5 EXISTING SPOT LEVEL
  - PROPOSED CUT SLOPE
  - EXISTING SLOPE TO BE IMPROVED
  - EXISTING SLOPE
  - TRAFFIC LANE
  - PROPOSED SLOPING SEAWALL
  - PROPOSED VERTICAL SEAWALL

REV.	DESCRIPTION	DATE
<p>路政署 HIGHWAYS DEPARTMENT 港珠澳大桥香港工程管理處 Hong Kong - Zhuhai - Macao Bridge Hong Kong Project Management Office</p>		
<p>TUEN MUN - CHEK LAP KOK LINK - INVESTIGATION</p>		
<p>LANDSCAPE PLAN</p>		
<p>SHEET 1 OF 13</p>		
<p>Maunsell Consultants Asia Ltd. 茂盛(亞洲)工程顧問有限公司</p>		
DRG.NO.	FIGURE 10.9.1	
DESIGNED BY	AGREEMENT NO.	P. REV. APPROVED
---	CE52/2007 (HY)	---
DRAWN BY	STATUS	
CXH	PRELIMINARY	
SCALE	METRES	
A1 1:1000	© COPYRIGHT RESERVED	
所有權歸	茂盛(亞洲)工程顧問有限公司	

DATE 2009-5-15



NOTE:  
1. FOR NOTES AND LEGEND SEE DRAWING NO. 60044963/S1A/SK 2.



REV. NO.	DESCRIPTION	DATE
<p>路政署 HIGHWAYS DEPARTMENT 港珠澳大橋香港工程處 Hong Kong - Zhuhai - Macao Bridge Hong Kong Project Management Office</p>		
TUEN MUN - CHEK LAP KOK LINK - INVESTIGATION		
LANDSCAPE PLAN		
SHEET 2 OF 13		
<p>Maunsell Consultants Asia Ltd. 茂盛(亞洲)工程顧問有限公司</p>		
DRG. NO.	FIGURE 10.9.2	
DESIGNED BY	APPROVED BY	DATE
GXH	CE52/2007 (HY)	
SCALE	STATUS	
A1 1:1000	PRELIMINARY	
DIMENSIONS ARE IN METRES	COPYRIGHT RESERVED	

DATE 2009-5-15

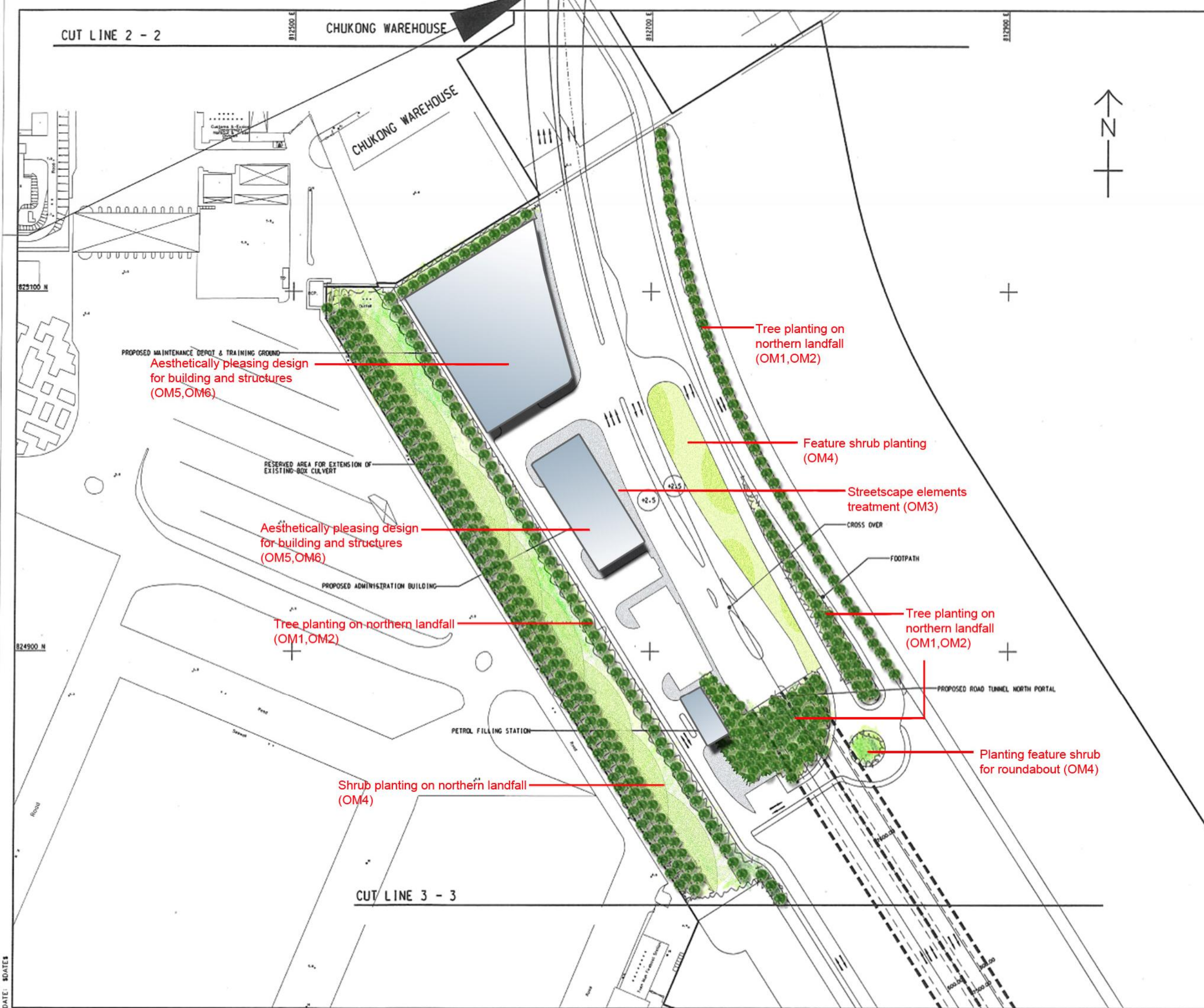


CUT LINE 2 - 2

CHUKONG WAREHOUSE

CHUKONG WAREHOUSE

NOTE:  
1. FOR NOTES AND LEGEND SEE DRAWING NO. 60044963/E1A/SK 2.



Aesthetically pleasing design for building and structures (OM5,OM6)

Tree planting on northern landfall (OM1,OM2)

Feature shrub planting (OM4)

Streetscape elements treatment (OM3)

Aesthetically pleasing design for building and structures (OM5,OM6)

Tree planting on northern landfall (OM1,OM2)

Tree planting on northern landfall (OM1,OM2)

Planting feature shrub for roundabout (OM4)

Shrub planting on northern landfall (OM4)

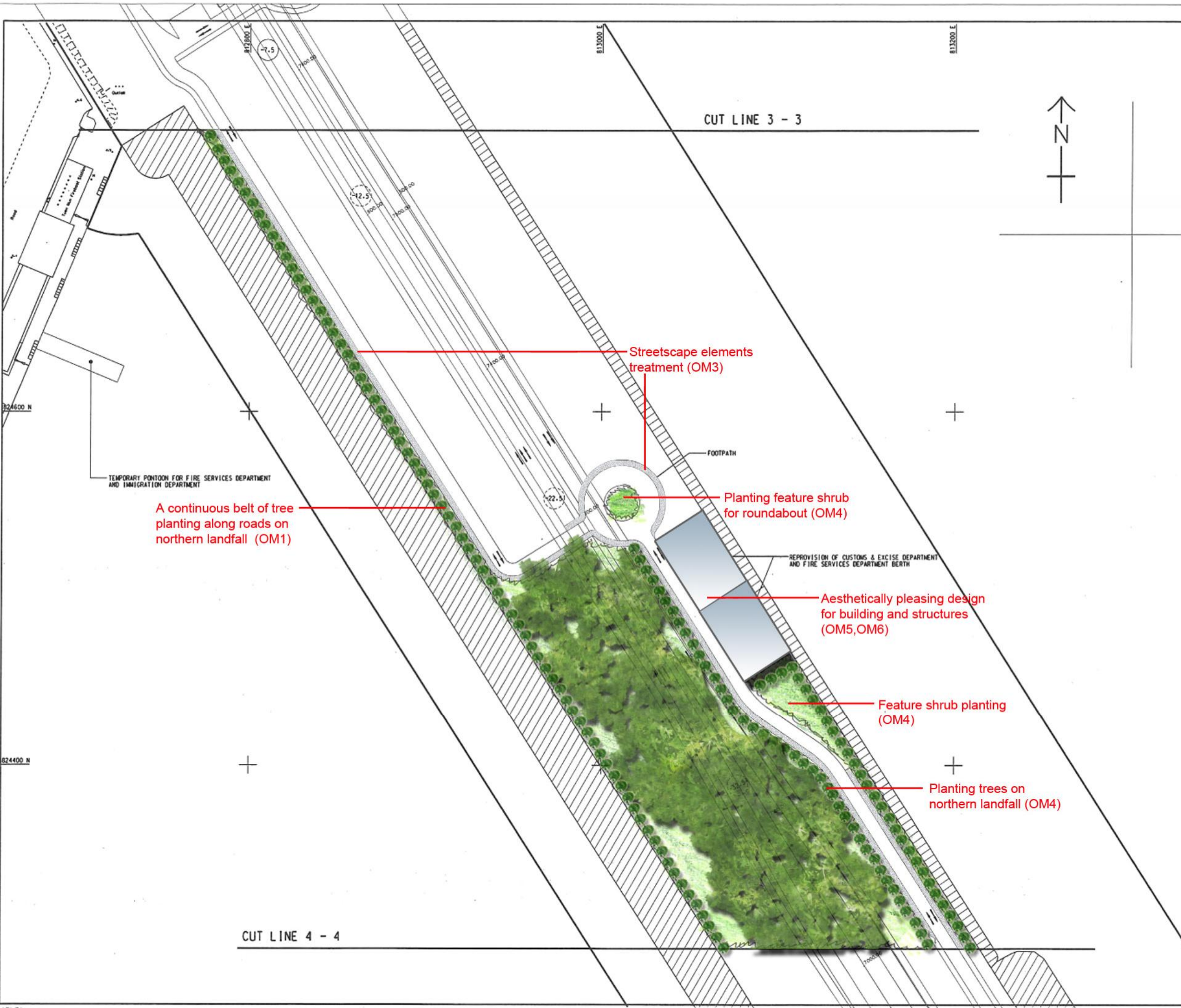
CUT LINE 3 - 3

NO.	DESCRIPTION	DATE	BY
1	REVISION		
<b>HIGHWAYS DEPARTMENT</b> HONG KONG - ZHUPAI - MACAO BRIDGE HONG KONG PROJECT MANAGEMENT OFFICE			
<b>TUEN MUN - CHEK LAP KOK LINK - INVESTIGATION</b>			
LANDSCAPE PLAN SHEET 3 OF 13			
<b>MAUNSELL   AECOM</b> Maunsell Consultants Asia Ltd. 茂盛(亞洲)工程顧問有限公司			
DRGNO.	FIGURE 10.9.3		
DESIGNED BY	APPROVED BY	DATE	SCALE
GKH	CE52/2007 (HY)		PRELIMINARY
SCALE	METRES		
© COPYRIGHT RESERVED 版權所有			

DATE: 30/05/07  
SFILES



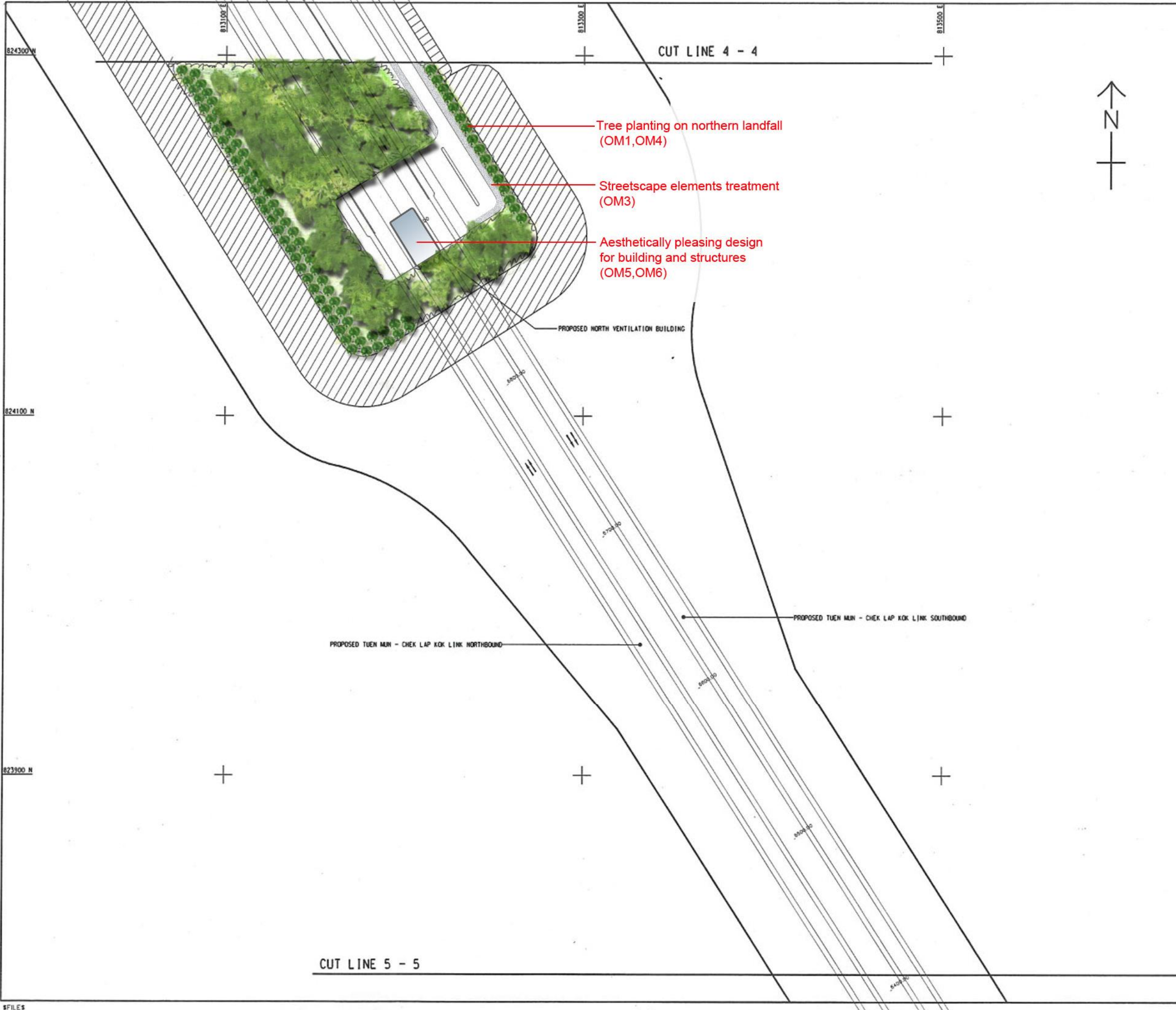
**NOTE:**  
 1. FOR NOTES AND LEGEND SEE DRAWING NO. 60044963/E1A/SK 2.



HIGHWAYS DEPARTMENT	
HONG KONG - ZHANGJIAI - MACAO BRIDGE HONG KONG PROJECT MANAGEMENT OFFICE	
TUEN MUN - CHEK LAP KOK LINK - INVESTIGATION	
LANDSCAPE PLAN	
SHEET 4 OF 13	
MAUNSELL   AECOM	
Maunsell Consultants Asia Ltd. 茂盛(亞洲)工程顧問有限公司	
DRGNO. 圖紙編號	FIGURE 10.9.4
DESIGNED BY E1	APPROVED BY CE52/2007 (INT)
DATE 02/08	SCALE AS SHOWN
SCALE 1:1000	STATUS PRELIMINARY
UNIT METRES	COPYRIGHT RESERVED © 茂盛 顧問 有限公司

DATE: 02/08  
 FILES





**NOTE:**  
 1. FOR NOTES AND LEGEND SEE DRAWING NO. 60044963/E1A/SK 2.

Tree planting on northern landfall (OM1,OM4)

Streetscape elements treatment (OM3)

Aesthetically pleasing design for building and structures (OM5,OM6)

PROPOSED NORTH VENTILATION BUILDING

PROPOSED TUEN MUN - CHEK LAP KOK LINK NORTHBOUND

PROPOSED TUEN MUN - CHEK LAP KOK LINK SOUTHBOUND

CUT LINE 5 - 5

CUT LINE 4 - 4



<b>HIGHWAYS DEPARTMENT</b> HONG KONG - ZHILHAI - MACAO BRIDGE HONG KONG PROJECT MANAGEMENT OFFICE	
<b>TUEN MUN - CHEK LAP KOK LINK - INVESTIGATION</b>	
LANDSCAPE PLAN SHEET 5 OF 13	
<b>MAUNSELL   AECOM</b> Maunsell Consultants Asia Ltd. 茂盛(亞洲)工程顧問有限公司	
DRG.NO. 圖紙編號	FIGURE 10.9.5
DESIGNED BY 設計	APPROVED BY CE52/2007 (HY)
DRAWN BY GXH	STATUS PRELIMINARY
SCALE A1 1:1000	COPYRIGHT RESERVED 版權所著
DIMENSIONS ARE IN METRES	

DATE: 04/05/09  
 #FILES



CUT LINE 11 - 11

813900 E

814100 E

814300 E



820500 N

820300 N

DATE:   
 \$FILES

PROPOSED SOUTH VENTILATION BUILDING

Aesthetically pleasing design for building and structures (OM5,OM6)

Streetscape elements treatment (OM3)

Tree planting on HKBCF (OM1,OM4)  
- avoid fruit trees to attract birds  
- species under the Hong Kong International Airport Plant Species List

FOOTPATH

CUT LINE 12 - 12

**NOTE:**

1. FOR NOTES AND LEGEND SEE DRAWING NO. 60044963/E1A/SK2.

REV.	DESCRIPTION	DATE	BY	CHECKED

**HIGHWAYS DEPARTMENT**  
 HONG KONG - ZHUHAI - MACAO BRIDGE  
 HONG KONG PROJECT MANAGEMENT OFFICE  
**TUEN MUN - CHEK LAP KOK LINK - INVESTIGATION**

**LANDSCAPE PLAN**

SHEET 6 OF 13

**MAUNSELL | AECOM**  
 Maunsell Consultants Asia Ltd.  
 茂盛(亞洲)工程顧問有限公司

DRG.NO. **FIGURE 10.9.6**

DESIGNED BY	APPROVED BY	P. DIR. APPROVED

SCALE	
比例	

	PRELIMINARY
	© COPYRIGHT RESERVED











Tree planting on HKBCF (OM1,OM4)  
 - avoid fruit trees to attract birds  
 - species under the Hong Kong  
 International Airport Plant Species List

NOTE:  
 1. FOR NOTES AND LEGEND SEE DRAWING NO.  
 60044963/E1A/SK2.

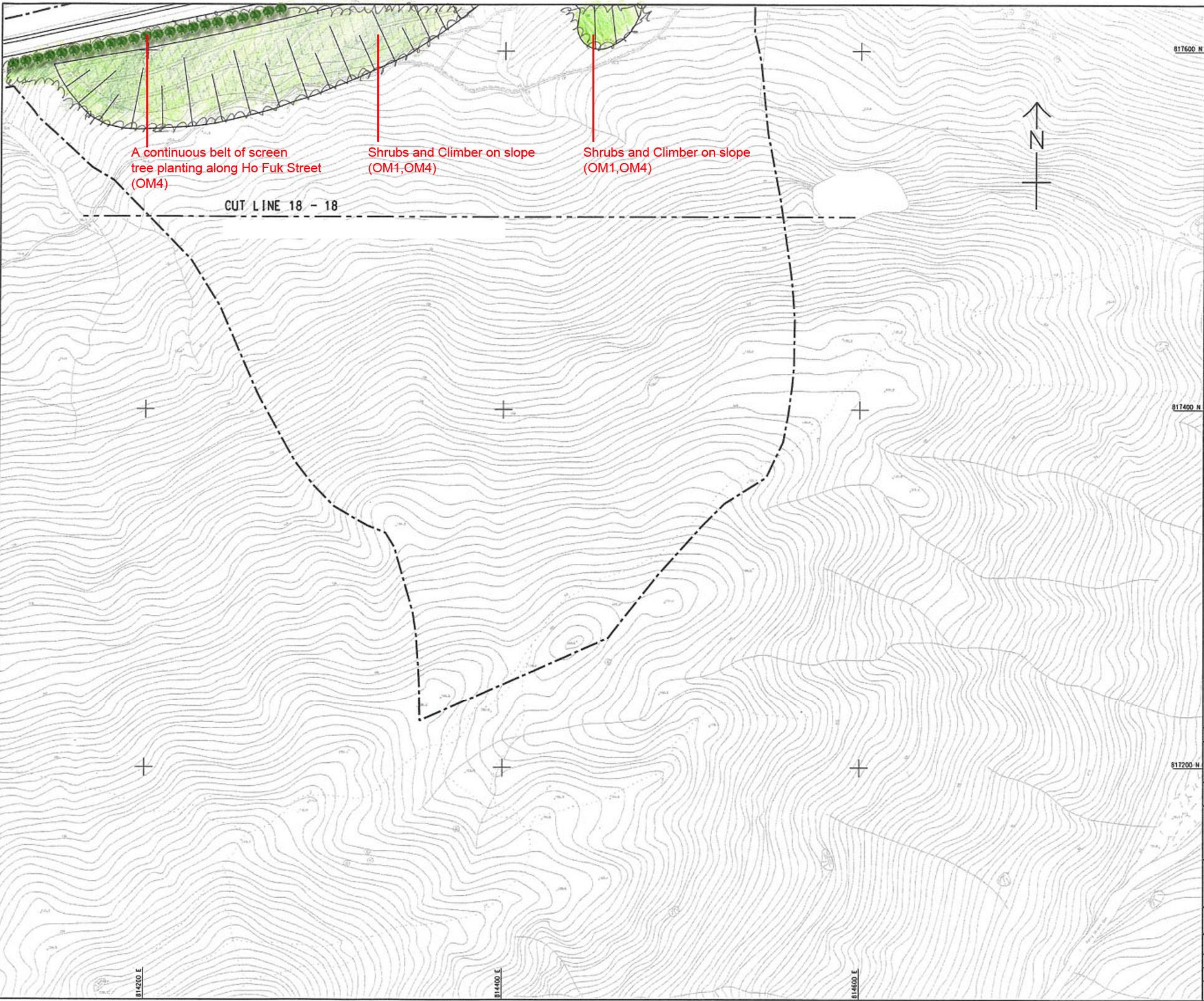


PROPOSED TUEN MUN - CHEK LAP KOK LINK SOUTHBOUND  
 PROPOSED TUEN MUN - CHEK LAP KOK LINK NORTHBOUND

NO.	DESCRIPTION	REV.	DATE
<b>HIGHWAYS DEPARTMENT</b> 路政署 香港機場管理局工程處 Hong Kong - Zhuhai - Macao Bridge Hong Kong Project Management Office			
<b>TUEN MUN - CHEK LAP KOK LINK - INVESTIGATION</b>			
<b>LANDSCAPE PLAN</b>			
SHEET 9 OF 13			
<b>MAUNSELL   AECOM</b> Maunsell Consultants Asia Ltd. 茂業(亞洲)工程顧問有限公司			
DRG. NO. 圖紙編號		FIGURE 10.9.9	
DESIGNED BY 設計	APPROVED BY 核准 CE52/2007 (HY)	P. BY APPROVED 核准	
DRAWN BY 繪圖 GXH	CHECKED BY 校核 BR	<b>PRELIMINARY</b>	
SCALE 比例 A1 1:1000		© COPYRIGHT RESERVED 版權所有	
DIMENSIONS IN METRES			

DATE 2005-5-15  
 000000





A continuous belt of screen tree planting along Ho Fuk Street (OM4)

Shrubs and Climber on slope (OM1,OM4)

Shrubs and Climber on slope (OM1,OM4)

CUT LINE 18 - 18

**NOTE:**  
1. FOR NOTES AND LEGEND SEE DRAWING NO. 60044963/E1A/SK2.

817600 N

817400 N

817200 N

814000 E

814000 E

814000 E

NO.	DESCRIPTION	DATE	BY

**路政署**  
**HIGHWAYS DEPARTMENT**  
港珠澳大桥工程管理局  
Hong Kong - Zhuhai - Macao Bridge  
Hong Kong Project Management Office

**TUEN MUN - CHEK LAP KOK LINK - INVESTIGATION**

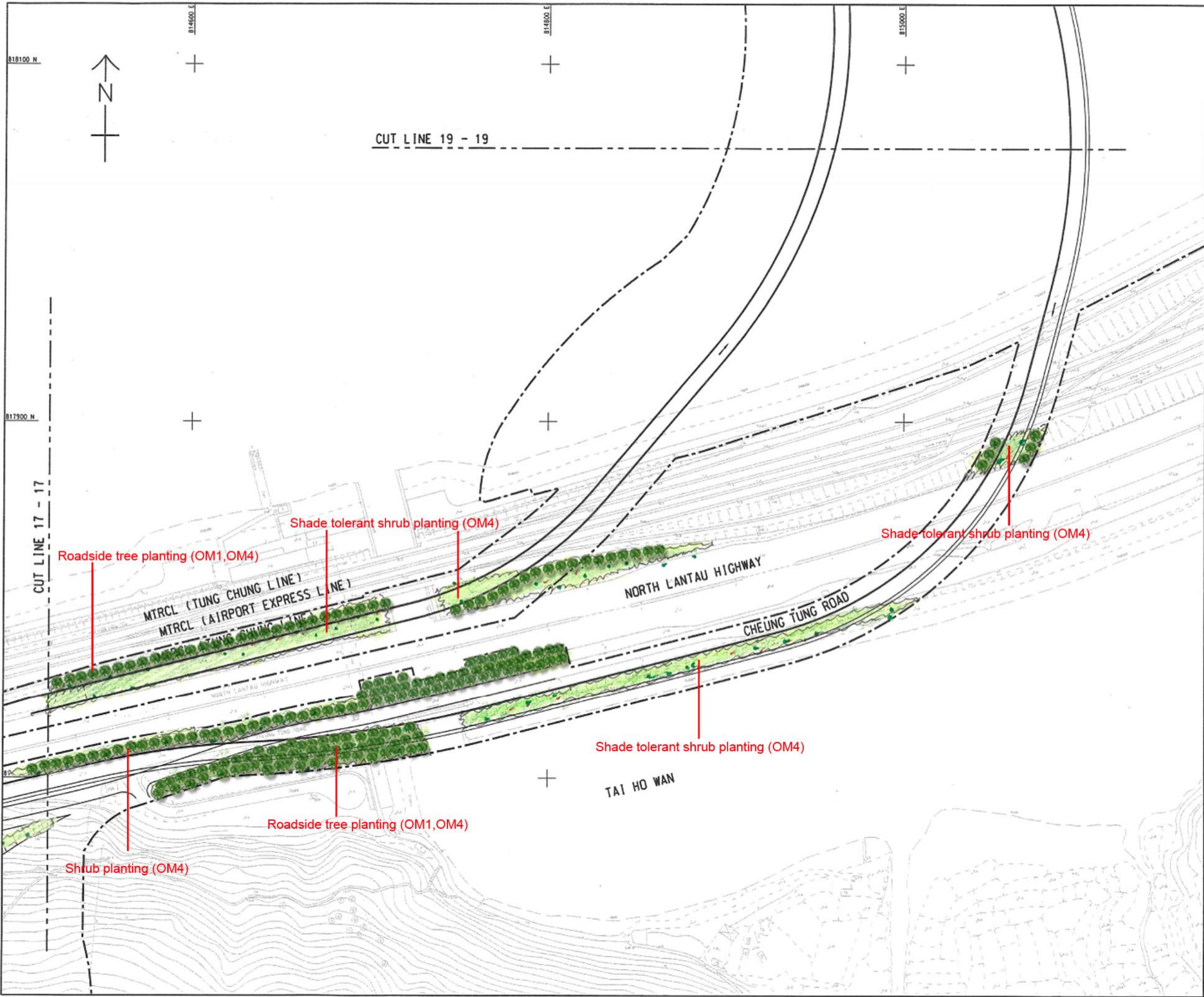
**LANDSCAPE PLAN**  
SHEET 10 OF 13

**MAUNSELL | AECOM**  
Maunsell Consultants Asia Ltd.  
茂盛(亞洲)工程顧問有限公司

ORG. NO. 圖紙編號	FIGURE 10.9.10
DESIGNED BY 設計	APPROVED BY CE52/2007 (HY) P. S. CHAN 審核
DRAWN BY 繪圖	SCALE A1 1:1000
DATE 日期	PRELIMINARY
REVISIONS AND IN 修改	© COPYRIGHT RESERVED 版權所有

DATE 2009-5-15



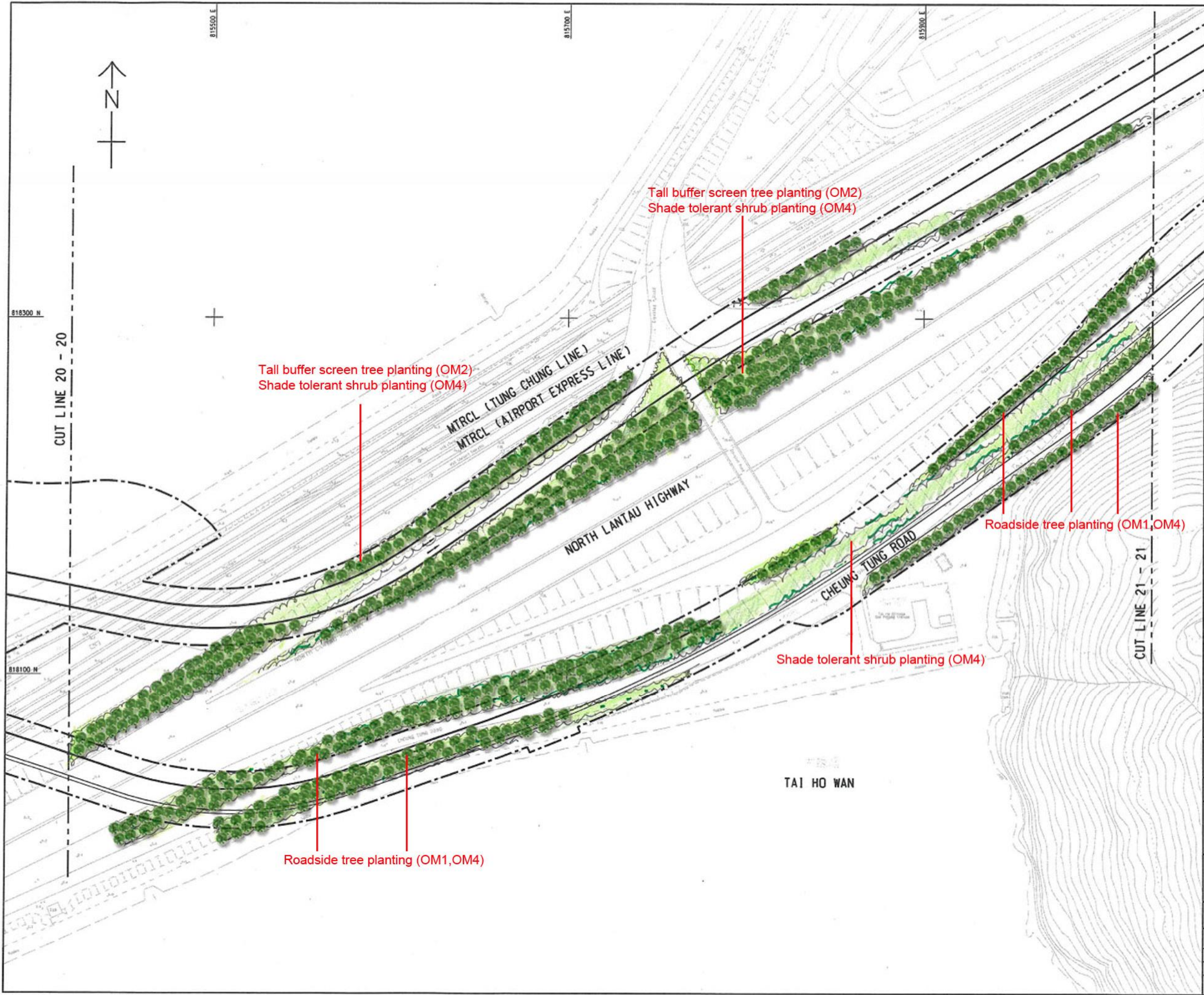


**NOTE:**  
 1. FOR NOTES AND LEGEND SEE DRAWING NO. 60044963/E1A/SK2.

REV. NO.	DESCRIPTION	DATE	BY
<b>HIGHWAYS DEPARTMENT</b> 路政署 香港大橋及港路工程署 Hong Kong - Zhuhai - Macao Bridge Hong Kong Project Management Office			
<b>TUEN MUN - CHEK LAP KOK LINK - INVESTIGATION</b>			
<b>LANDSCAPE PLAN</b>			
SHEET 11 OF 13			
<b>MAUNSELL   AECOM</b> Maunsel Consultants Asia Ltd. 茂業(亞洲)工程顧問有限公司			
DRG. NO. 圖紙編號	FIGURE 10.9.11		
DESIGNED BY 設計	APPROVED BY 校核	DATE 日期	SCALE 比例
SCALE 比例	PRELIMINARY		
DATE 日期	COPYRIGHT RESERVED 版權所有		

DATE 2009-5-15





**NOTE:**  
 1. FOR NOTES AND LEGEND SEE DRAWING NO. 60044963/E1A/SK2.

NO.	DESCRIPTION	DATE	BY

**路政署 HIGHWAYS DEPARTMENT**  
 港珠澳大橋香港工程管理有限公司  
 Hong Kong - Zhuhai - Macao Bridge  
 Hong Kong Project Management Office

**TUEN MUN - CHEK LAP KOK LINK - INVESTIGATION**

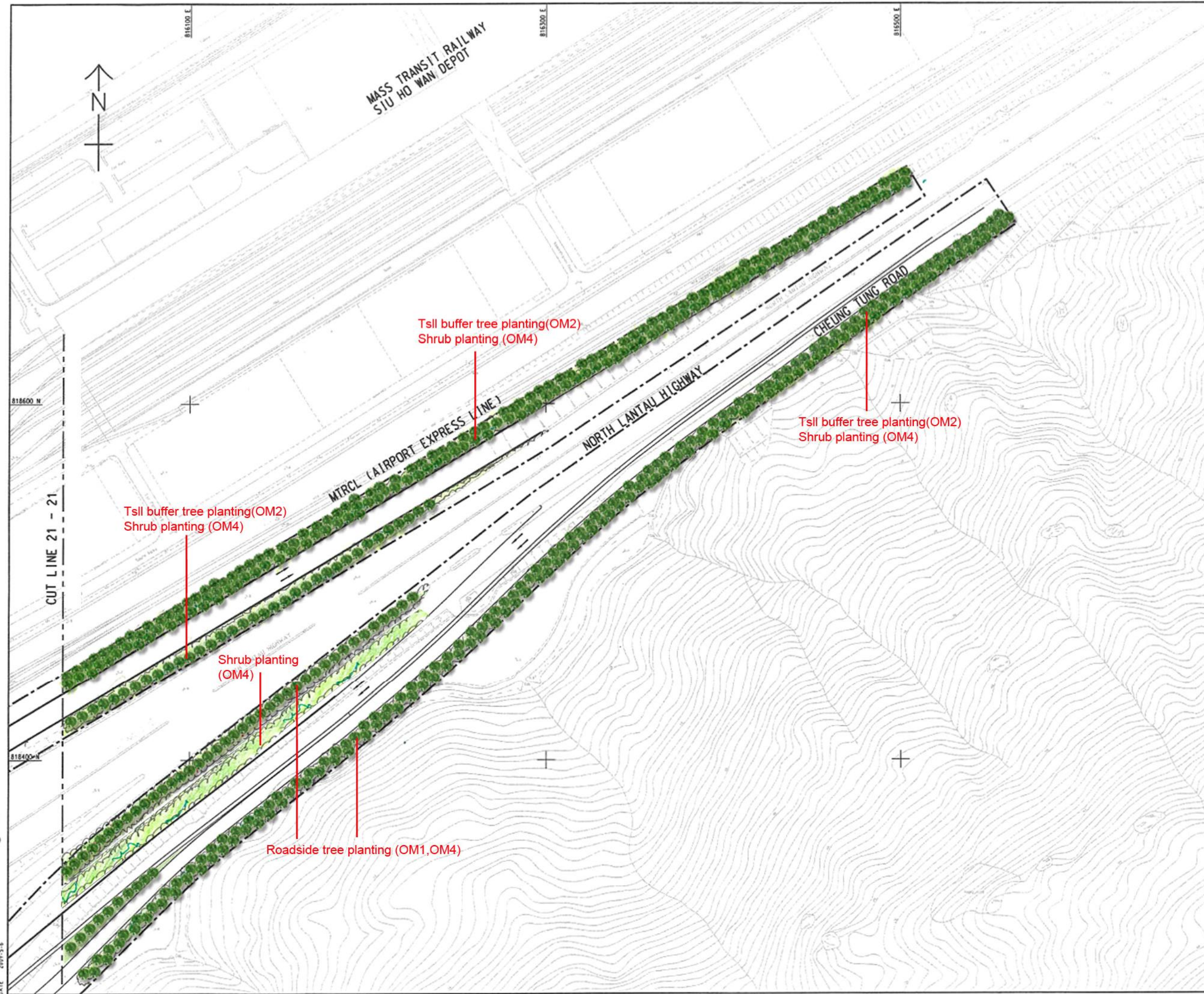
**LANDSCAPE PLAN**  
 SHEET 12 OF 13

**MAUNSELL | AECOM**  
 Mounsell Consultants Asia Ltd.  
 茂盛(亞洲)工程顧問有限公司

DRG. NO. 圖紙編號	FIGURE 10.9.12	
DESIGNED BY 設計	APPROVED NO. 校核	P. OR APPROVED 核准
	CE52/2007 (HT)	
DRAWN BY 繪圖	SCALE 比例	PRELIMINARY
GXH	A1 1:1000	
		© COPYRIGHT RESERVED 版權所有

DATE 2009-5-6





**NOTE:**

1. FOR NOTES AND LEGEND SEE DRAWING NO. 6004963/E1A/SK2.

NO.	DESCRIPTION	DATE	BY
<p>路政署 HIGHWAYS DEPARTMENT 運輸及交通工程署 Hong Kong - Zhuhai - Macao Bridge Hong Kong Project Management Office</p>			
<p>TUEN MUN - CHEK LAP KOK LINK - INVESTIGATION</p>			
<p>LANDSCAPE PLAN</p>			
<p>SHEET 13 OF 13</p>			
<p><b>MAUNSELL   AECOM</b> Maunsell Consultants Asia Ltd. 茂盛(亞洲)工程顧問有限公司</p>			
<p>ORG. NO. 圖紙編號</p>		<p>FIGURE 10.9.13</p>	
<p>DESIGNED BY 設計</p>	<p>PROJECT NO. 項目編號</p>	<p>P. BY, APPROVED 審核</p>	
<p>DRAWN BY 繪圖</p>	<p>SCALE 比例</p>	<p>PRELIMINARY</p>	
<p>DATE 日期</p>	<p>SCALE 比例</p>	<p>© COPYRIGHT RESERVED 版權所有</p>	