

FOR CONTINUATION SEE FIGURE 13.3

LEGEND:

- ⊕ 12787/DH4 EXISTING DRILLHOLE
- ⊕ DH1 EXISTING DRILLHOLE UNDER FEASIBILITY STAGE (2005)
- ⊕ PMDH1 PROPOSED MARINE DRILLHOLE
- ⊕ AN01 PROPOSED MARINE DRILLHOLE FOR SEDIMENT QUALITY SAMPLING

MAUNSELL AECOM
Maunsell Consultants Asia Ltd

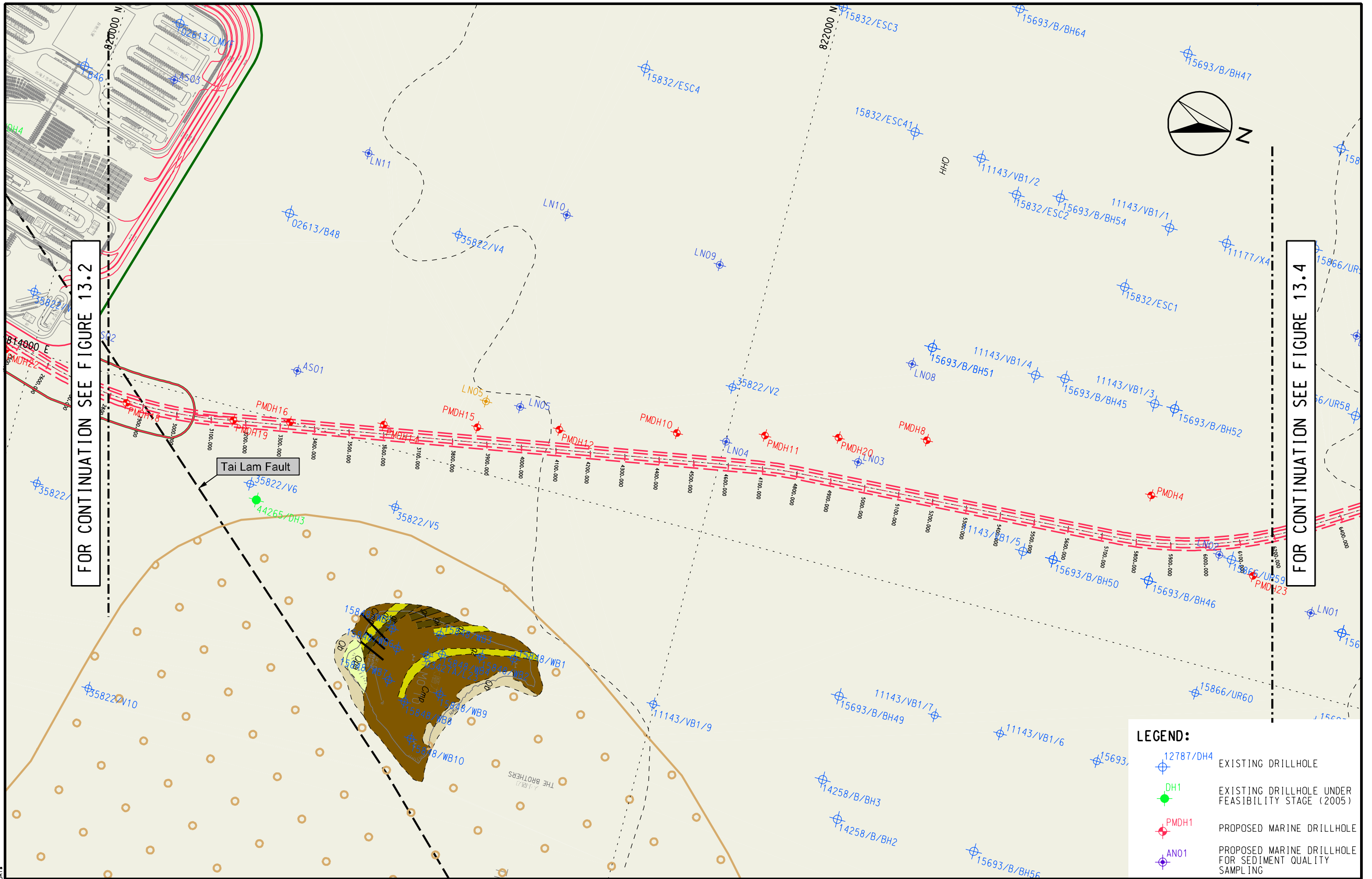
AGREEMENT NO. CE 52/2007(HY)
TUEN MUN - CHEK LAP KOK LINK - INVESTIGATION

GEOLOGICAL PLAN

SHEET 1 OF 3

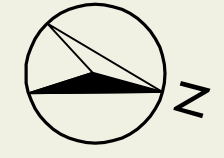
SCALE	A3 1:10000	DATE	APR. 2009
CHECK	--	DRAWN	CL
JOB No.	60044963	DRAWING No.	FIGURE 13.2
		REV	--

Plotting By: 2009-4-16
PLOT SCALE: \$SCALE\$SHORT\$



FOR CONTINUATION SEE FIGURE 13.2

FOR CONTINUATION SEE FIGURE 13.4



LEGEND:

	12787/DH4	EXISTING DRILLHOLE
	DH1	EXISTING DRILLHOLE UNDER FEASIBILITY STAGE (2005)
	PMDH1	PROPOSED MARINE DRILLHOLE
	AN01	PROPOSED MARINE DRILLHOLE FOR SEDIMENT QUALITY SAMPLING

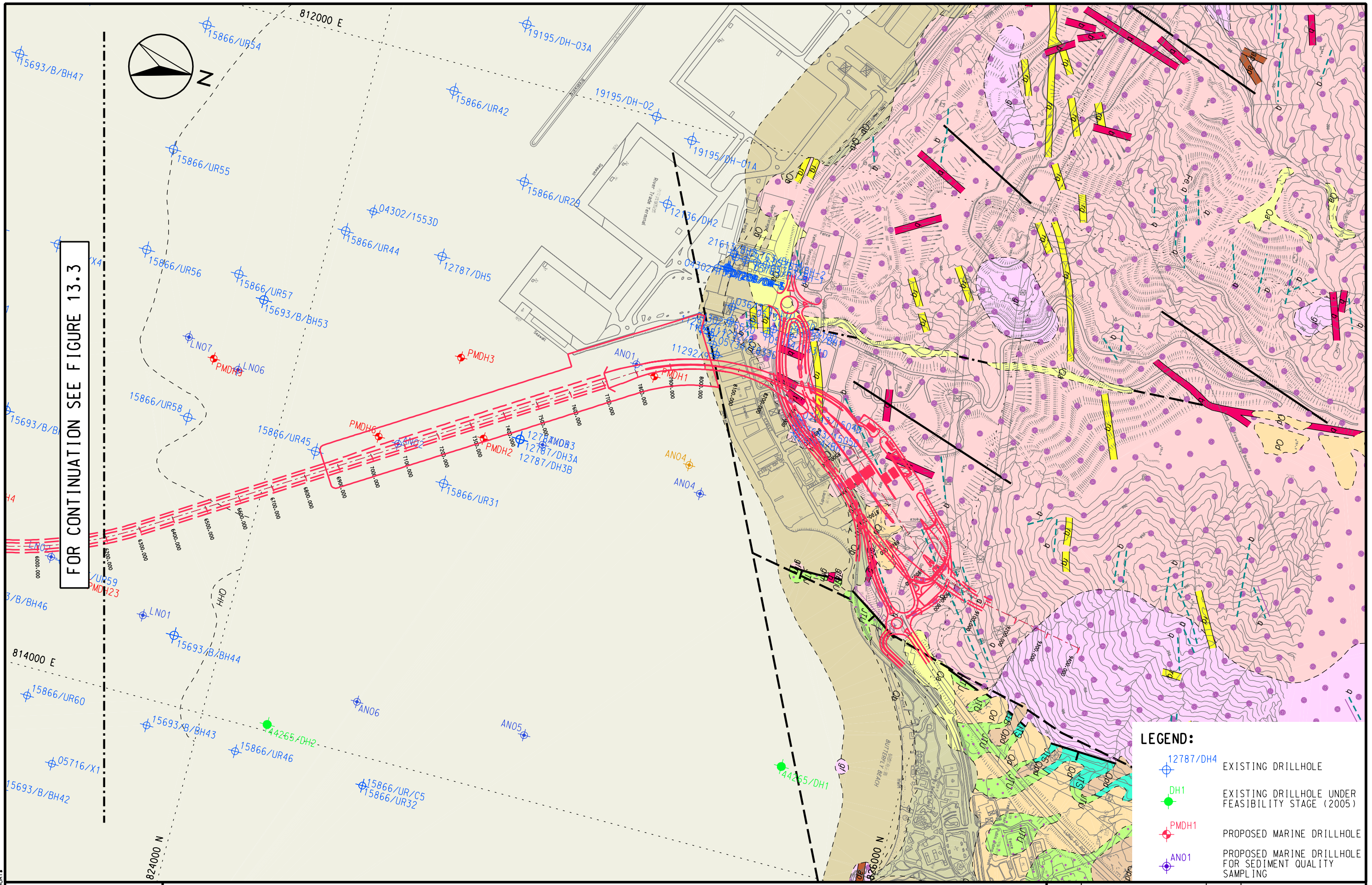
MAUNSELL AECOM
Maunsell Consultants Asia Ltd

AGREEMENT NO. CE 52/2007(HY)
TUEN MUN - CHEK LAP KOK LINK - INVESTIGATION

GEOLOGICAL PLAN

SHEET 2 OF 3

SCALE	A3 1:10000	DATE	APR. 2009
CHECK	--	DRAWN	CL
JOB NO.	60044963	DRAWING No.	FIGURE 13.3
		REV	--



FOR CONTINUATION SEE FIGURE 13.3

LEGEND:

- ⊕ 12787/DH4 EXISTING DRILLHOLE
- DH1 EXISTING DRILLHOLE UNDER FEASIBILITY STAGE (2005)
- ⊕ PMDH1 PROPOSED MARINE DRILLHOLE
- ⊕ AN01 PROPOSED MARINE DRILLHOLE FOR SEDIMENT QUALITY SAMPLING

MAUNSELL | AECOM
Maunsell Consultants Asia Ltd

AGREEMENT NO. CE 52/2007(HY)
TUEN MUN - CHEK LAP KOK LINK - INVESTIGATION

GEOLOGICAL PLAN

SHEET 3 OF 3

SCALE	A3 1:10000	DATE	APR. 2009
CHECK	--	DRAWN	CL
JOB No.	60044963	DRAWING No.	FIGURE 13.4
		REV	--

Plotting By: 2009-4-16
PLOT SCALE: \$SCALE\$SHORT\$