



Legend:


 Avifauna only

 Mammals, Avifauna, Herpetofauna, Insects

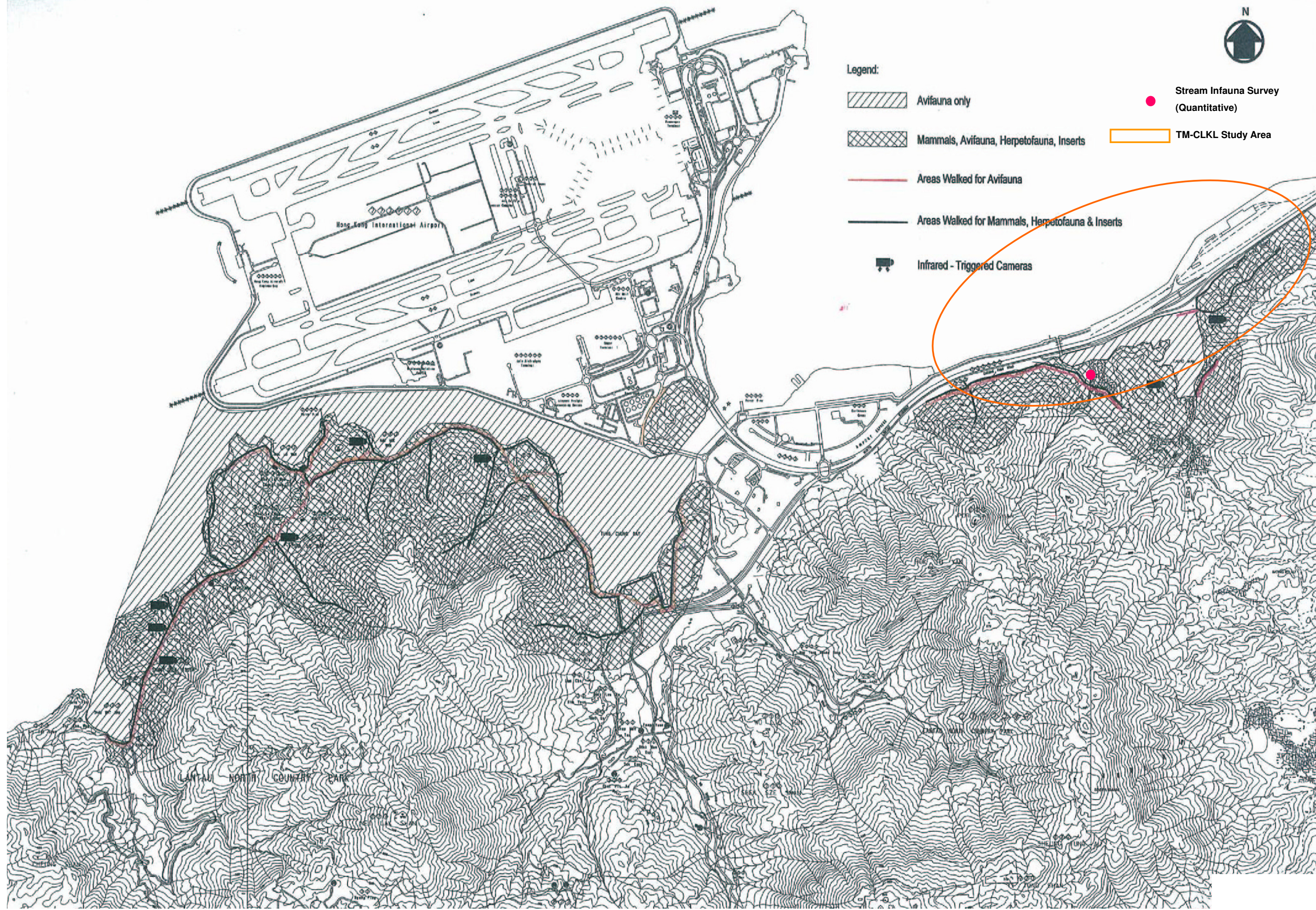
 Areas Walked for Avifauna

 Areas Walked for Mammals, Herpetofauna & Insects

 Infrared - Triggered Cameras

 Stream Infauna Survey (Quantitative)

 TM-CLKL Study Area

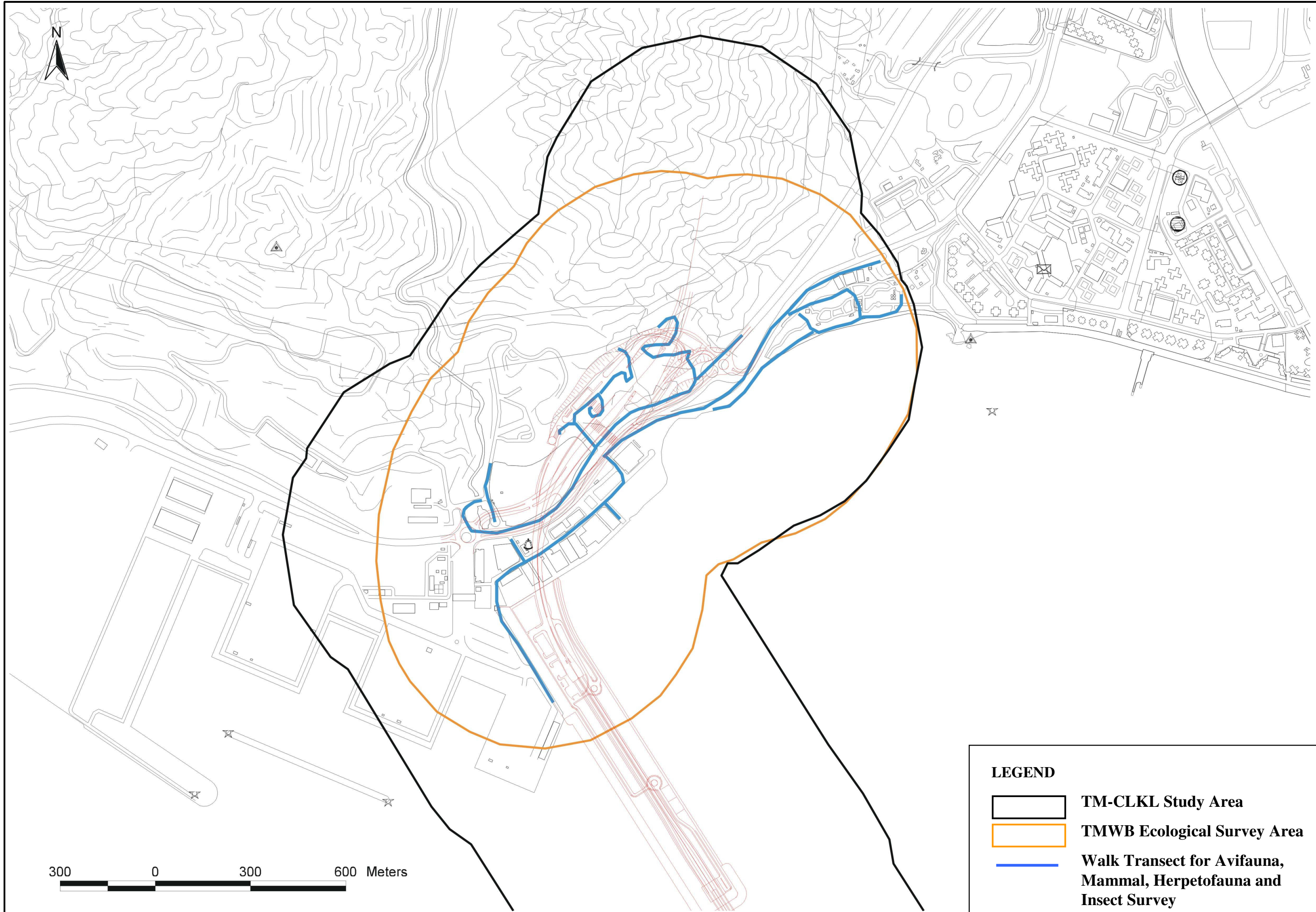





Plotting By: DATAS
PLOT SCALE: \$SCALESHORTS

MAUNSELL | AECOM
Maunsell Consultants Asia Ltd

AGREEMENT NO. CE 52 / 2007 (HY)
TUEN MUN - CHEK LAP KOK LINK - INVESTIGATION
Areas Surveyed for Avifauna, Mammals, Herpetofauna, Stream Infauna and Insects
During September 2003 to May 2004 Under HZMB Study

SCALE	--	DATE	MAY, 2009
CHECK	--	DRAWN	--
JOB No.	08111511	DRAWING No.	7.2a
		REV	--



LEGEND			
	TM-CLKL Study Area		
	TMWB Ecological Survey Area		
	Walk Transect for Avifauna, Mammal, Herpetofauna and Insect Survey		

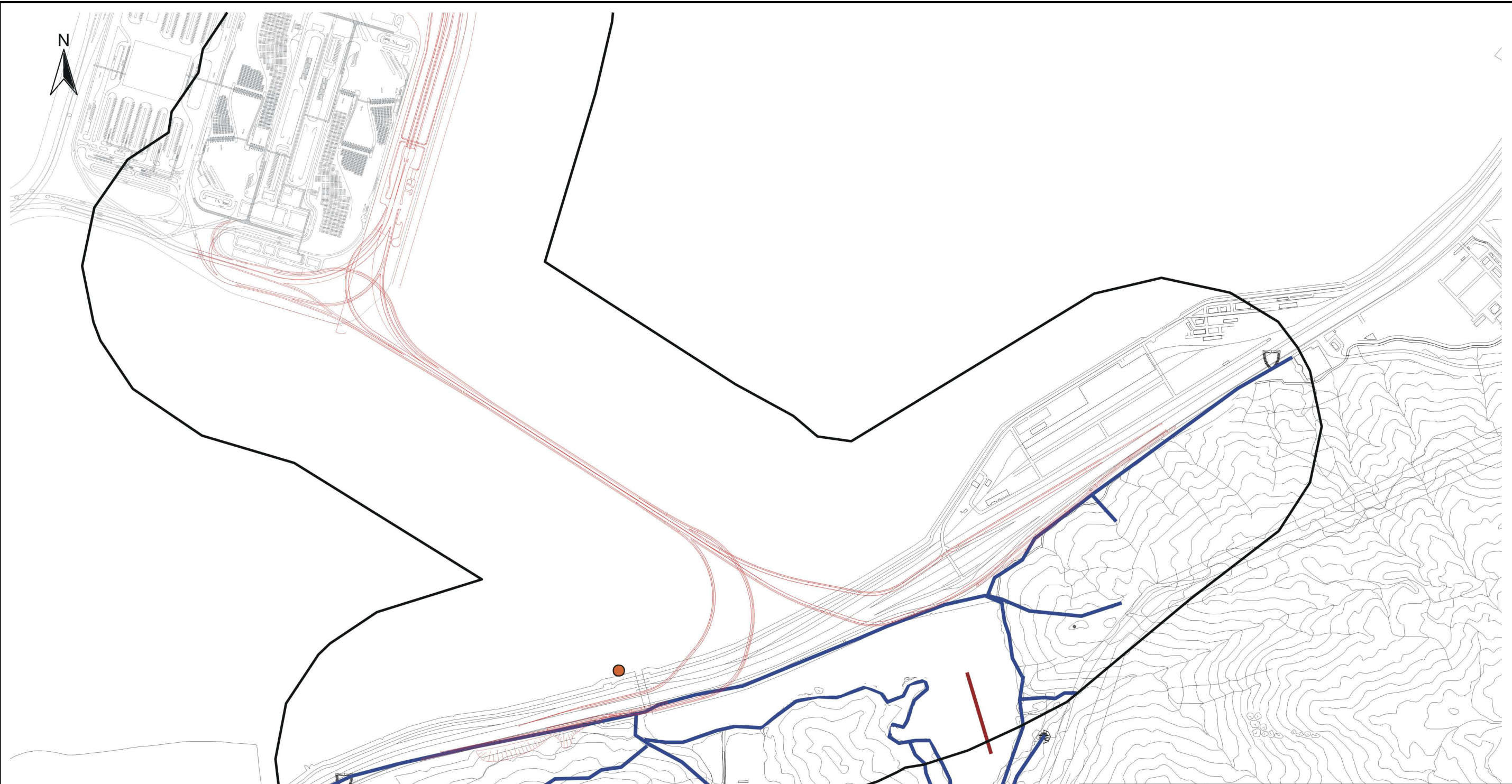
PLOT SCALE: \$SCALE\$ SHORTS
 PLOT DATE: \$DATE\$

MAUNSELL | AECOM
 Maunsell Consultants Asia Ltd

AGREEMENT NO. CE 52 / 2007 (HY)
 TUEN MUN - CHEK LAP KOK LINK - INVESTIGATION

Areas Surveyed for Avifauna, Mammals, Herpetofauna and Insects During September 2003 to May 2004 Under TMWB Study

SCALE	--	DATE	MAY. 2009
CHECK	--	DRAWN	--
JOB No.	08111511	DRAWING No.	7.3
		REV	--



LEGEND

- TM-CLKL Study Area**
- Walk Transect for Avifauna, Mammals, Herpetofauna, Insects and Vegetation Survey**
- Transect for Freshwater and Estuary Fish Survey**
- Location of Stream Fauna Survey**
- Location of Point Count Avifauna Survey**

SCALE	--	DATE	MAY. 2009
CHECK	--	DRAWN	--
JOB No.	08111511	DRAWING No.	7.4a
		REV	--

PLOT SCALE: \$SCALESHORTS\$
 PLOT BY: \$DATE\$



LEGEND

- TM-CLKL Study Area
- Walk Transect for Avifauna Mammals, Herpetofauna and Insects Survey
- Location of Stream Fauna Survey



SCALE	--	DATE	MAY. 2009
CHECK	--	DRAWN	--
JOB No.	08111511	DRAWING No.	7.4b
		REV	--