






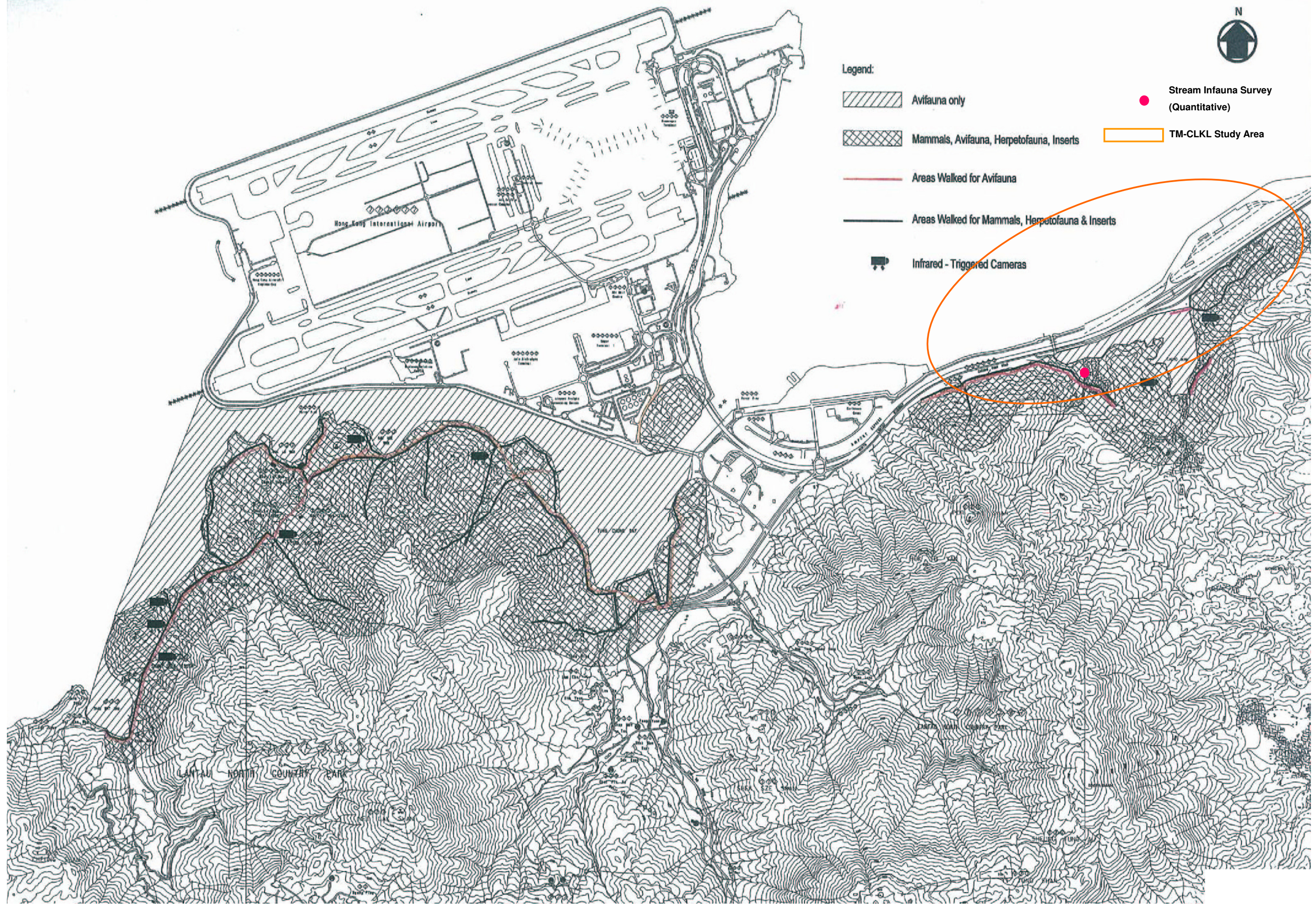




Legend:

-  Avifauna only
-  Mammals, Avifauna, Herpetofauna, Insects
-  Areas Walked for Avifauna
-  Areas Walked for Mammals, Herpetofauna & Insects
-  Infrared - Triggered Cameras
-  Stream Infauna Survey (Quantitative)
-  TM-CLKL Study Area

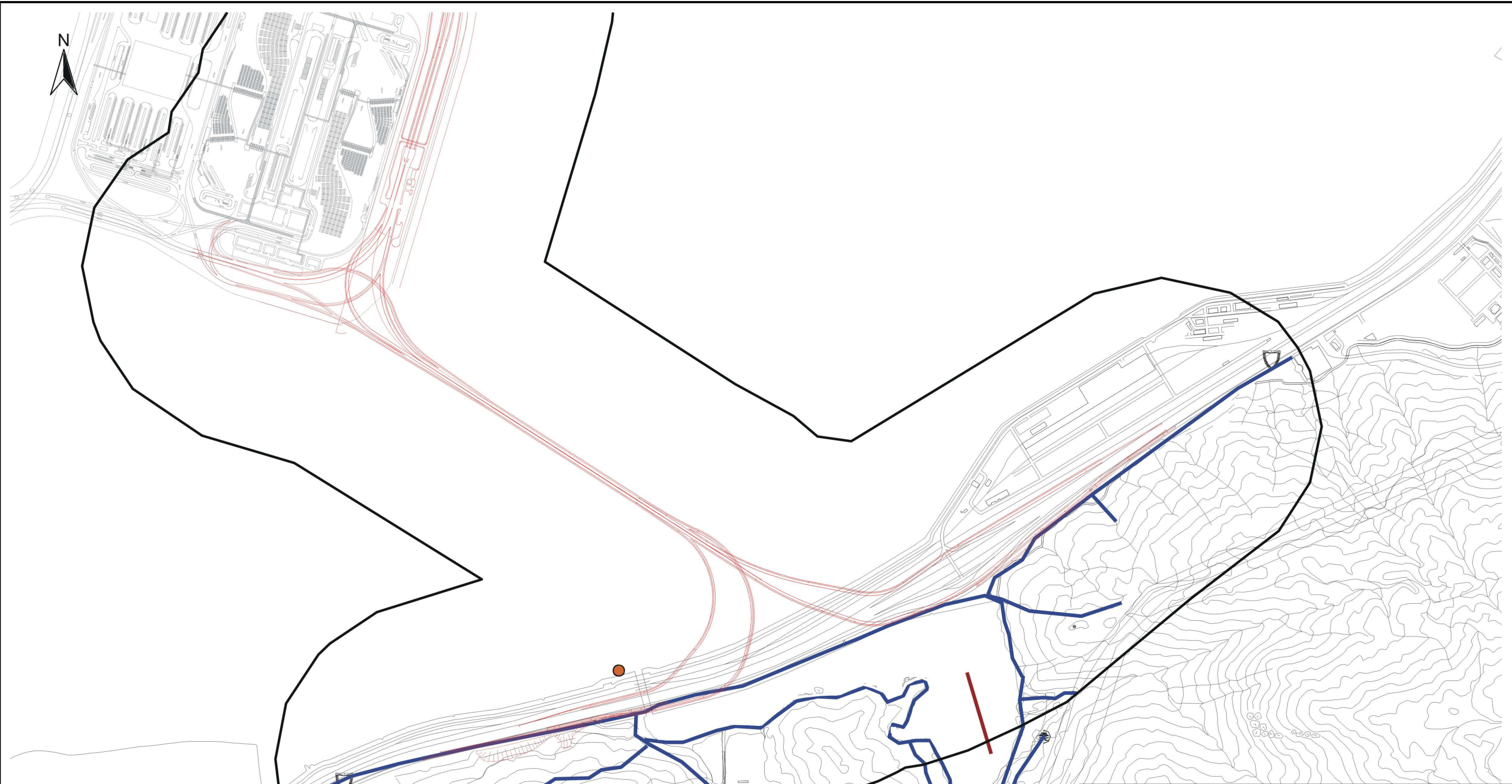


Plotting By: DATAS
PLOT SCALE: \$SCALESHORT\$

MAUNSELL | AECOM
Maunsell Consultants Asia Ltd

AGREEMENT NO. CE 52 / 2007 (HY)
 TUEN MUN - CHEK LAP KOK LINK - INVESTIGATION
Areas Surveyed for Avifauna, Mammals, Herpetofauna, Stream Infauna and Insects
 During September 2003 to May 2004 Under HZMB Study

SCALE	--	DATE	MAY, 2009
CHECK	--	DRAWN	--
JOB No.	08111511	DRAWING No.	7.2a
		REV	--

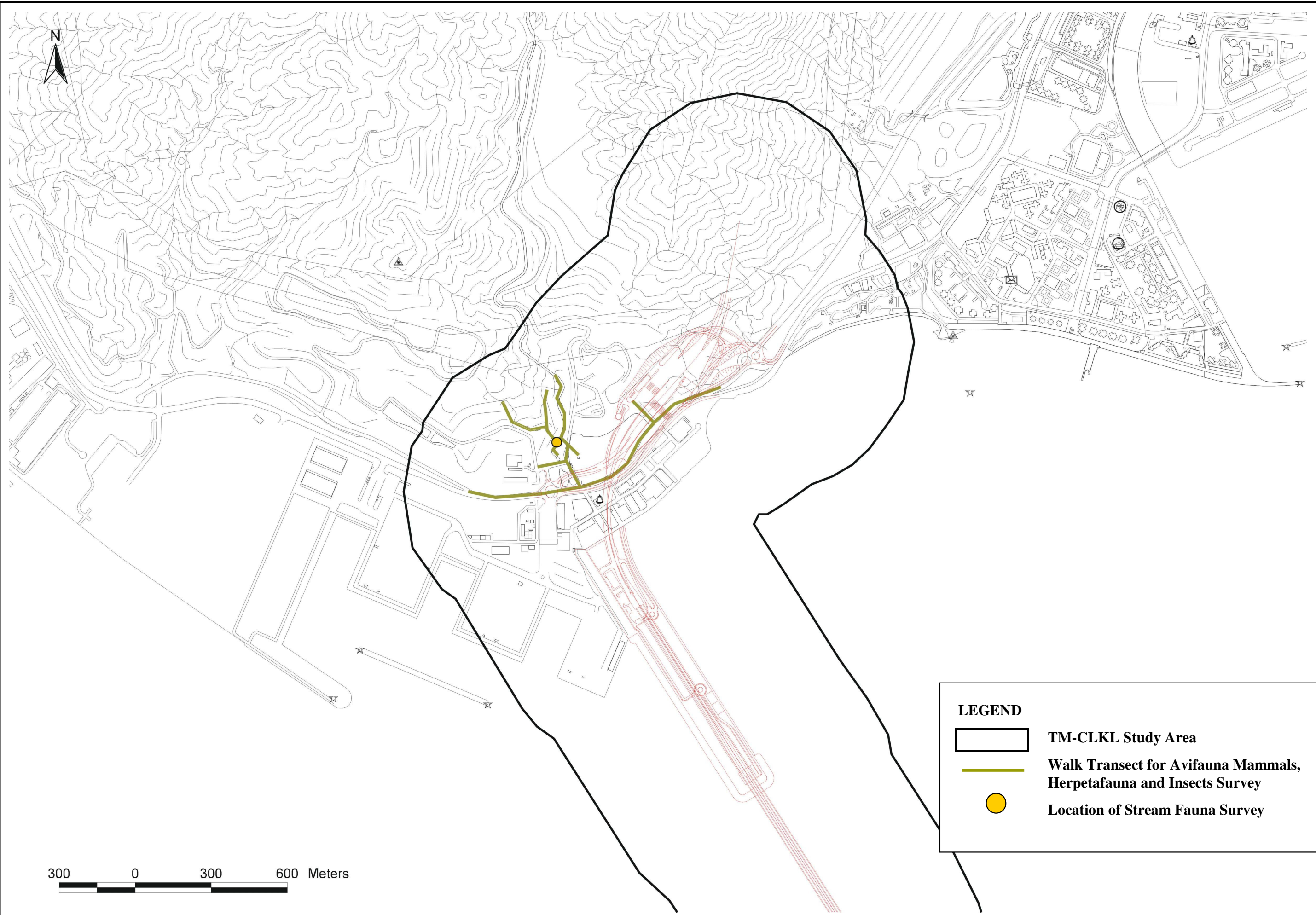


LEGEND

- TM-CLKL Study Area**
- Walk Transect for Avifauna, Mammals, Herpetofauna, Insects and Vegetation Survey**
- Transect for Freshwater and Estuary Fish Survey**
- Location of Stream Fauna Survey**
- Location of Point Count Avifauna Survey**

SCALE	--	DATE	MAY. 2009
CHECK	--	DRAWN	--
JOB No.	08111511	DRAWING No.	7.4a
		REV	--

Plotting By: DATAS
 PLOT SCALE: \$SCALE\$SHORTS



LEGEND

- TM-CLKL Study Area
- Walk Transect for Avifauna Mammals, Herpetofauna and Insects Survey
- Location of Stream Fauna Survey

SCALE	--	DATE	MAY. 2009
CHECK	--	DRAWN	--
JOB No.	08111511	DRAWING No.	7.4b
		REV	--