

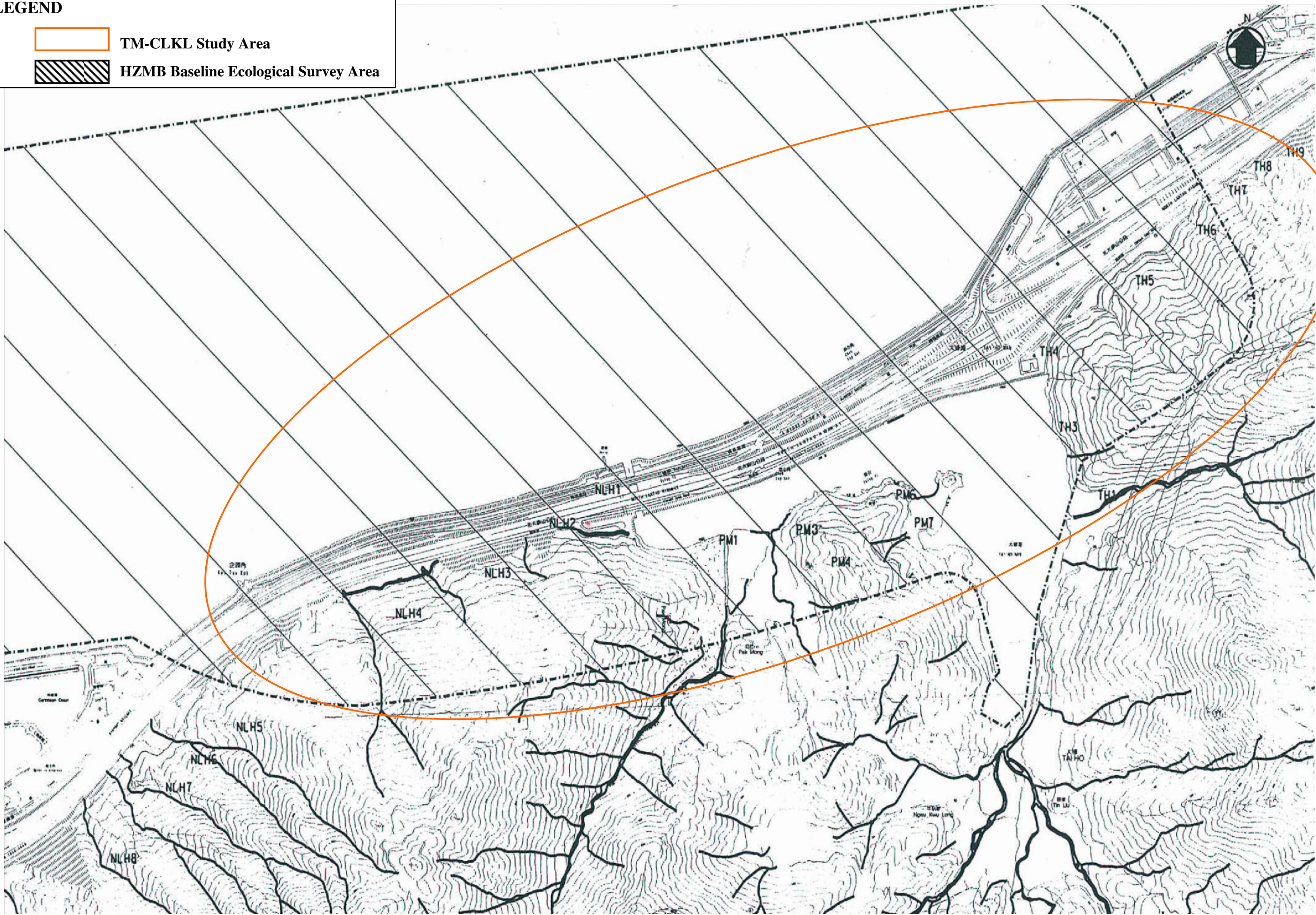
**LEGEND**



TM-CLKL Study Area



HZMB Baseline Ecological Survey Area



AGREEMENT NO. CE 52 / 2007 (HY)  
TUEN MUN - CHEK LAP KOK LINK - INVESTIGATION

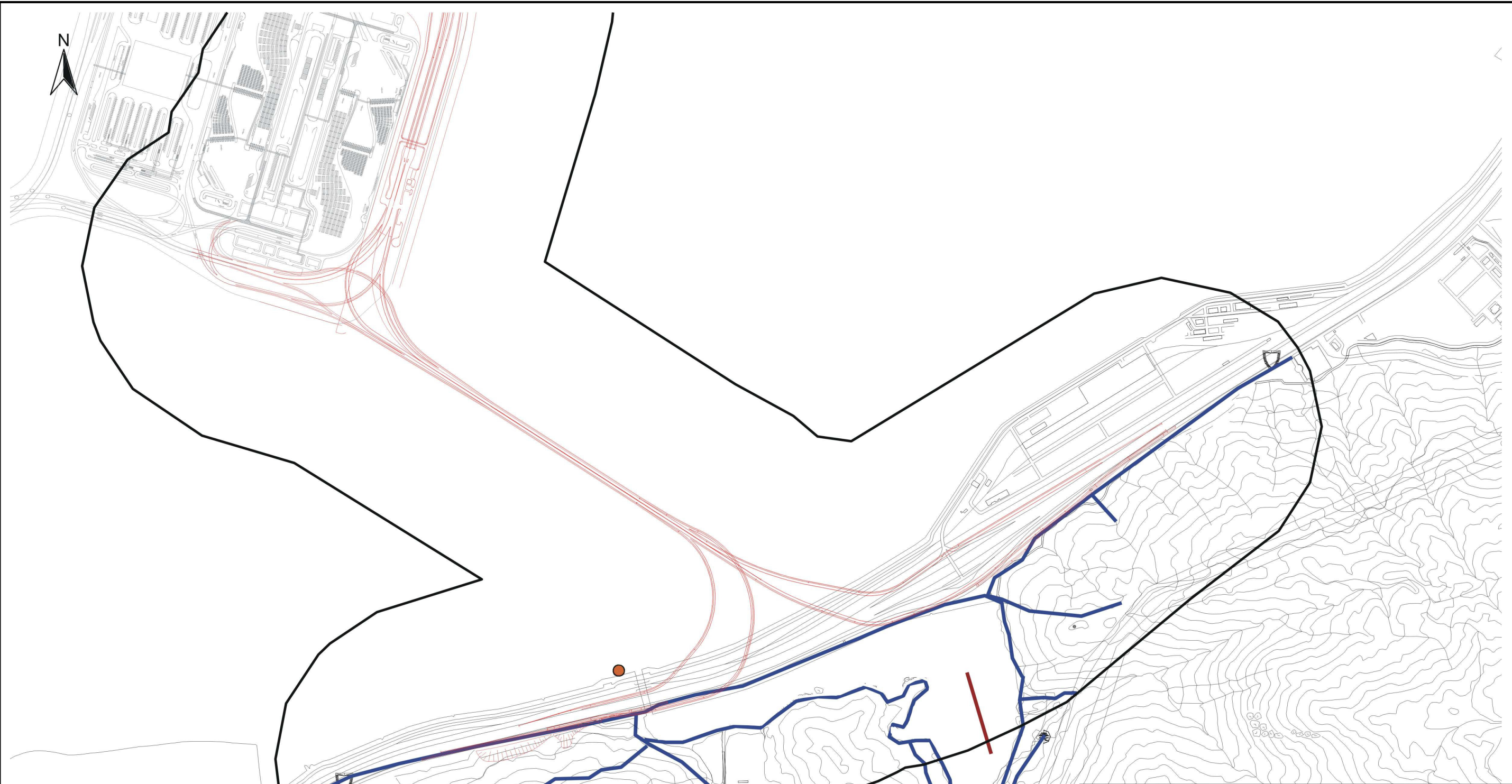
Stream and Tributaries Surveyed Between September 2003 to May 2004 Under HZMB Study

SCALE	--	DATE	MAY, 2009
CHECK	--	DRAWN	--
JOB No.	08111511	DRAWING No.	7.2b
		REV	--






**MAUNSELL | AECOM**

Maunsell Consultants Asia Ltd





**LEGEND**

-  **TM-CLKL Study Area**
-  **Walk Transect for Avifauna, Mammals, Herpetofauna, Insects and Vegetation Survey**
-  **Transect for Freshwater and Estuary Fish Survey**
-  **Location of Stream Fauna Survey**
-  **Location of Point Count Avifauna Survey**

300 0 300 600 Meters

SCALE	--	DATE	MAY. 2009
CHECK	--	DRAWN	--
JOB No.	08111511	DRAWING No.	7.4a
		REV	--

Plotting By: DATAS  
 PLOT SCALE: \$SCALE\$SHORT\$