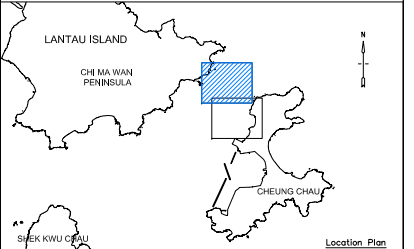


- Legend :
- Proposed Submarine Fresh Water Main
 - Cable/pipeline position, as determined by magnetometer, with reference number and anomaly size
 - Cable/pipeline position, as determined by seismic profiler
 - Coarse sediments
 - ROCK
 - Disturbed seabed
 - Scattered boulders/Concrete slab
 - Debris
 - Sand ripples
 - Interpreted cable/pipeline position, by magnetometer, seismic profiler and side scan sonar
 - Cable/pipeline-related scars, observed from side scan sonar
 - Existing cable/pipeline (Location Indicative Only)
 - Chart overlap
 - Survey boundary



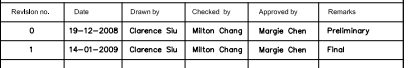
Project : WORKS ORDER NO. GE/2007/04.21
 AGREEMENT NO. CE 1/2008 (WS)
 IMPROVEMENT OF FRESH WATER SUPPLY
 TO CHEUNG CHAU - INVESTIGATION
 PROPOSED GEOPHYSICAL SURVEYS

AREA : LANTAU ISLAND TO CHEUNG CHAU FIGURE NUMBER : 11.1

Drawing Title : SEABED FEATURES
 AND
 CABLE/PIPELINE ALIGNMENTS

- Notes :
1. Survey Date : 04-06,08/12/2008
 2. Grid System : Hong Kong Metric Grid
 3. Survey Datum : Hong Kong Principal Datum
 4. Positioning : C-Nova GPS
 5. Equipment : DF-1000 Side Scan Sonar System
Seaspy Magnetometer
 6. Coastline taken from 1:20000 Series HM20C, Survey and Mapping Office, Lands Department

Revision no.	Date	Drawn by	Checked by	Approved by	Remarks
0	19-12-2008	Clarence Su	Milton Chang	Margie Chen	Preliminary
1	14-01-2009	Clarence Su	Milton Chang	Margie Chen	Final



Client : Civil Engineering and Development Department



JOB NO. : HK213808

FIGURE 6.4.1 SEABED FEATURES OF THE SURVEY AREA (SHEET 1 OF 2)