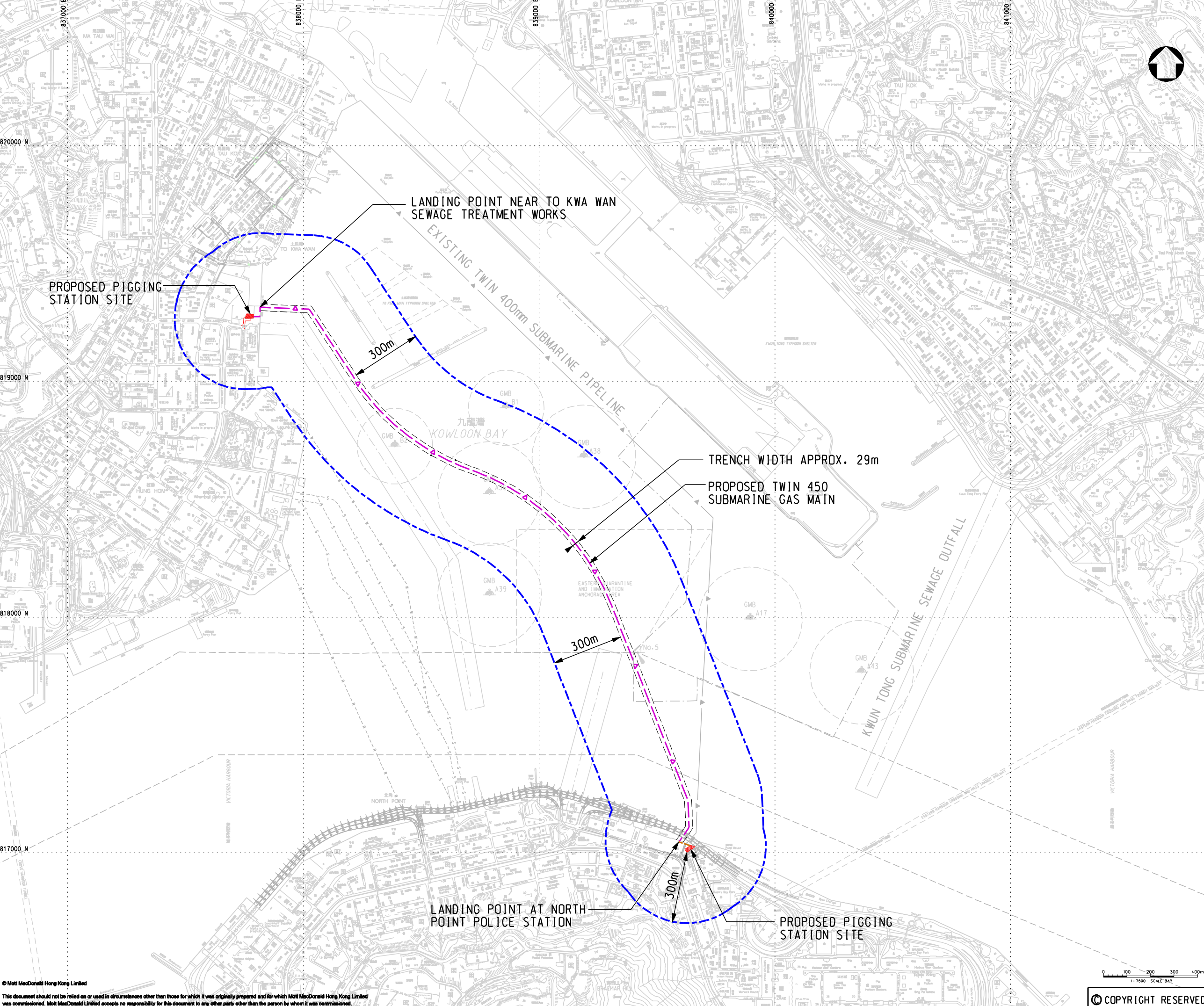


LEGEND:

- ▲— PROPOSED TWIN 450 SUBMARINE GAS MAIN
- ▲— CONNECTION TO NEW PIGGING STATION
- - - 300m ASSESSMENT AREA



| P3 | DEC 09 | MING | GAS MAIN REVISED | CWK | T1 |
|-----|--------|-------|------------------|-------|-------|
| P2 | JUN 09 | MING | GAS MAIN REVISED | CWK | T1 |
| P1 | DEC 08 | YKL | FIRST ISSUE | CWK | T1 |
| Rev | Date | Drawn | Description | Chk'd | App'd |

Client

THE HONG KONG AND CHINA GAS COMPANY LIMITED.

7/F West Wing Office Building
New World Centre, 20 Salisbury Road
Tsimshatsui, Kowloon
Hong Kong
T +852 2828 5757
F +852 2827 1828
W www.mottmac.com.hk

Project

INSTALLATION OF SUBMARINE GAS PIPELINES AND ASSOCIATED FACILITIES FROM TO KWA WAN TO NORTH POINT FOR FORMER KAI TAK AIRPORT DEVELOPMENT

Title

ASSESSMENT AREA OF CONSTRUCTION NOISE IMPACT ASSESSMENT

| | | | |
|----------|-----|--------------|----|
| Designed | CWK | Eng.Chk. | MT |
| Drawn | YKL | Coordination | FY |
| Dwg.Chk. | CWK | Approved | T1 |

| | | | | | |
|-------------|-------------|---------|--------|--------|-----|
| Scale | 1:7500@A1 | Project | 237926 | Status | PRE |
| Drawing No. | FIGURE 10.1 | | | Rev | P3 |

© Mott MacDonald Hong Kong Limited
This document not be relied on or used in circumstances other than those for which it was originally prepared and for which Mott MacDonald Hong Kong Limited was commissioned. Mott MacDonald Limited accepts no responsibility for this document to any other party other than the person by whom it was commissioned.

© COPYRIGHT RESERVED