


LEGEND:

-  PROPOSED TWIN 450 SUBMARINE GAS MAIN
-  300m ASSESSMENT AREA

P4	FEB 10	MING	GENERAL REVISION	CWK	T1
P3	DEC 09	MING	GAS MAIN REVISED	CWK	T1
P2	JUN 09	MING	GAS MAIN REVISED	CWK	T1
P1	DEC 08	YKL	FIRST ISSUE	CWK	T1
Rev	Date	Drawn	Description	Chk'd	App'd

Client



THE HONG KONG AND CHINA GAS COMPANY LIMITED.



7/F West Wing Office Building
New World Centre, 20 Salisbury Road
Tsimshatsui, Kowloon
Hong Kong
T +852 2828 6757
F +852 2827 1828
www.mottmac.com.hk

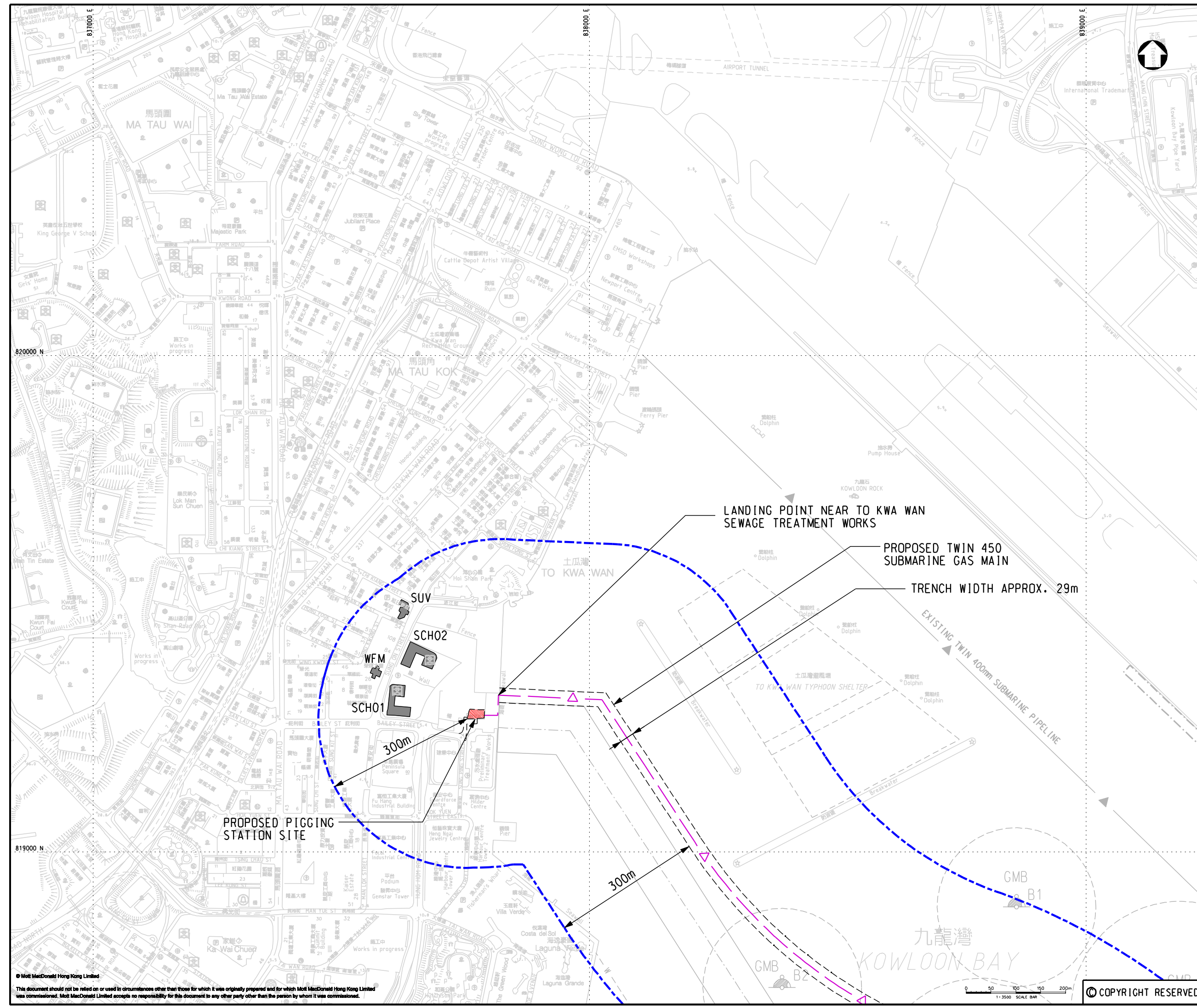
Project

INSTALLATION OF SUBMARINE GAS PIPELINES AND ASSOCIATED FACILITIES FROM TO KWA WAN TO NORTH POINT FOR FORMER KAI TAK AIRPORT DEVELOPMENT

Title

REPRESENTATIVE NOISE SENSITIVE RECEIVERS (NSRS) (TO KWA WAN)

Designed	CWK	Eng.Chk.	MT
Drawn	YKL	Coordination	FY
Dwg.Chk.	CWK	Approved	T1
Scale	1:3500@A1	Project	237926
Drawing No.	FIGURE 10-2	CAD File	J:\237926\REPORT\ENV\EI\100205\FIGURE 10-2.dgn
Status	PRE	Rev	P4



© Mott MacDonald Hong Kong Limited
This document should not be relied on or used in circumstances other than those for which it was originally prepared and for which Mott MacDonald Hong Kong Limited was commissioned. Mott MacDonald Limited accepts no responsibility for this document to any other party other than the person by whom it was commissioned.

COPYRIGHT RESERVED