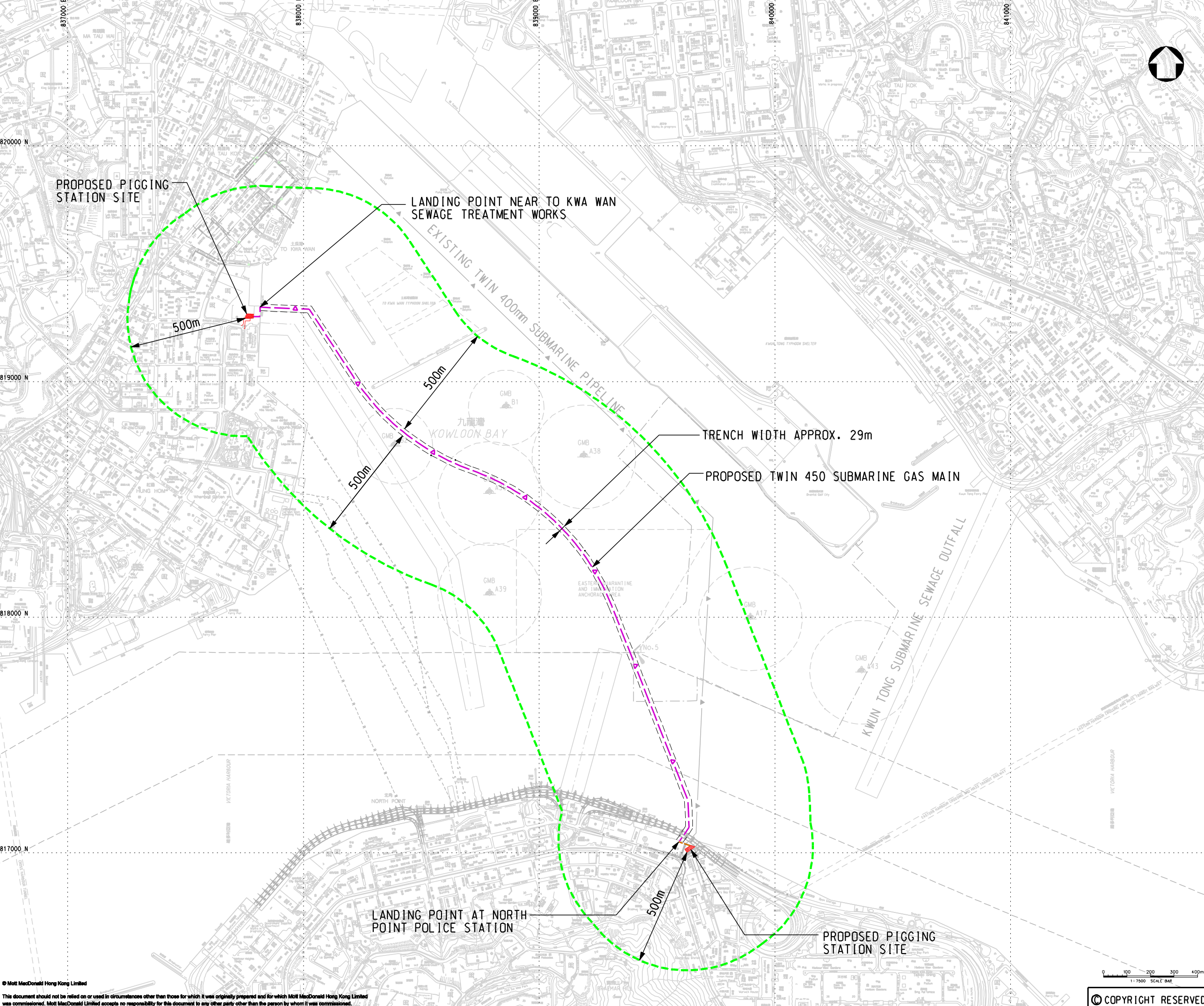


LEGEND:

- ▲— PROPOSED TWIN 450 SUBMARINE GAS MAIN
- ▲— CONNECTION TO NEW PIGGING STATION
- - - 500m ASSESSMENT AREA



P3	DEC 09	MING	GAS MAIN REVISED	CWK	T1
P2	JUN 09	MING	GAS MAIN REVISED	CWK	T1
P1	DEC 08	YKL	FIRST ISSUE	CWK	T1
Rev	Date	Drawn	Description	Chk'd	App'd

Client

THE HONG KONG AND CHINA GAS COMPANY LIMITED.

7/F West Wing Office Building
New World Centre, 20 Salisbury Road
Tsimshatsui, Kowloon
Hong Kong
T +852 2828 5757
F +852 2827 1828
W www.mottmac.com.hk

Project

INSTALLATION OF SUBMARINE GAS PIPELINES AND ASSOCIATED FACILITIES FROM TO KWA WAN TO NORTH POINT FOR FORMER KAI TAK AIRPORT DEVELOPMENT

Title

ASSESSMENT AREA OF AIR QUALITY IMPACT ASSESSMENT

Designed	CWK	Eng.Chk.	MT
Drawn	YKL	Coordination	FY
Dwg.Chk.	CWK	Approved	T1
Scale	1:7500@A1	Project	237926
Drawing No.	FIGURE 11.1	Status	PRE
		Rev	P3