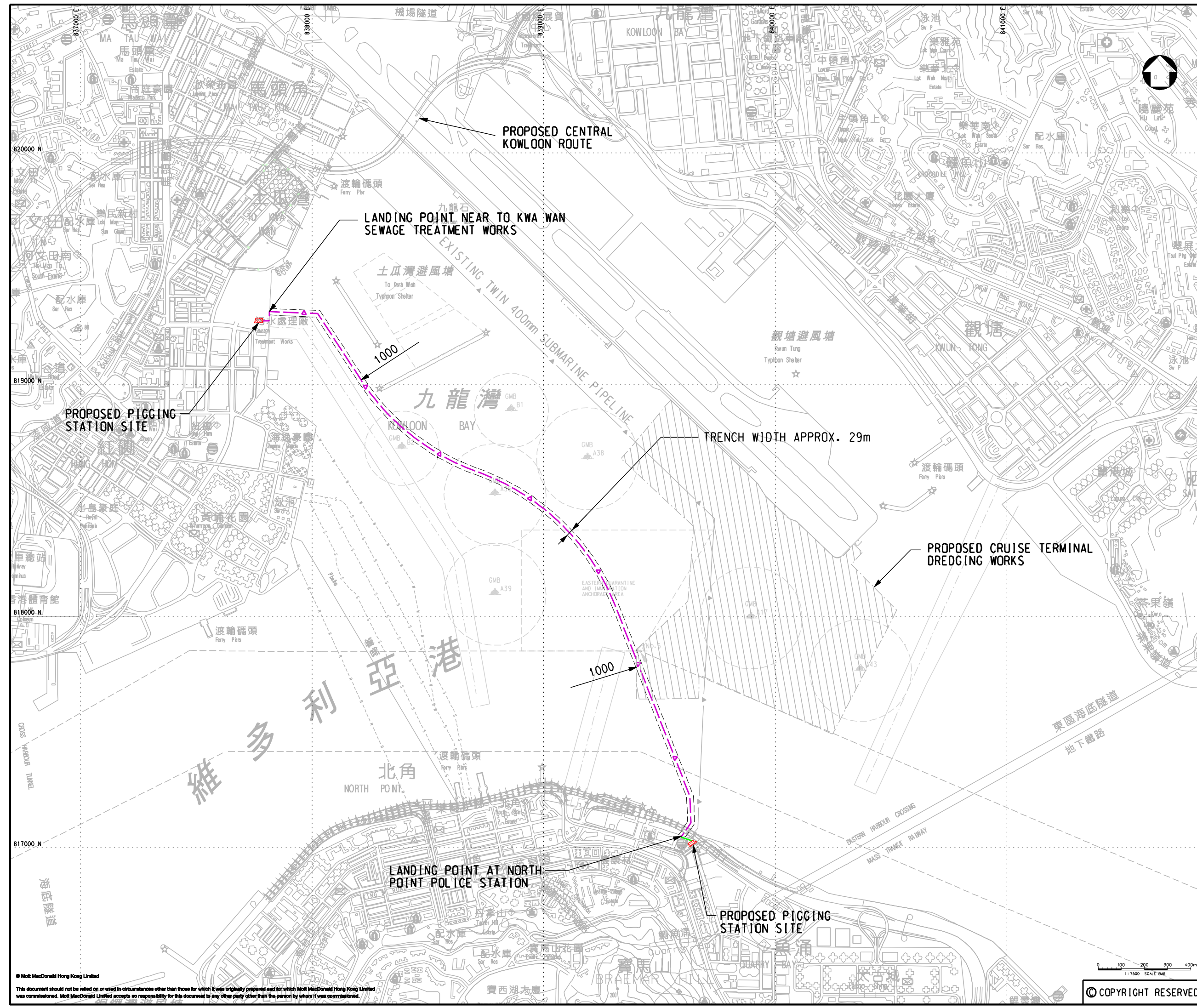


**LEGEND:**

- PROPOSED TWIN 450 SUBMARINE GAS MAIN
- CONNECTION TO NEW PIGGING STATION



P5	MAR 10	MING	GENERAL REVISION	FY	T1
P4	FEB 10	MING	GENERAL REVISION	FY	T1
P3	DEC 09	MING	MINOR AMENDMENT	BL	T1
P2	JUN 09	MING	MINOR AMENDMENT	BL	T1
P1	DEC 08	MING	FIRST ISSUE	BL	T1
Rev	Date	Drawn	Description	Chr	App'd



**Mott MacDonald**

7/F West Wing Office Building  
New World Centre, 20 Salisbury Road  
Tsimshatsui, Kowloon  
Hong Kong  
T +852 2828 5757  
F +852 2827 1828  
W www.mottmac.com.hk

**Project**

INSTALLATION OF SUBMARINE GAS PIPELINES AND ASSOCIATED FACILITIES FROM TO KWA WAN TO NORTH POINT FOR FORMER KAI TAK AIRPORT DEVELOPMENT

**Title**

PHYSICAL CONSTRAINTS TO THE PROPOSED SUBMARINE GAS PIPELINES

Designed	DL	Eng.Chk.	TT
Drawn	YKL	Coordination	DL
Dwg.Chk.	DL	Approved	TI

Scale	1:7500@A1	Project	237926	Status	PRE
Drawing No.	FIGURE 2.1	CAD File	J:\237926\REPORT\ENV\EM10036\Figure 2-1.dgn	Rev	P5

© COPYRIGHT RESERVED

© Mott MacDonald Hong Kong Limited  
This document should not be relied on or used in circumstances other than those for which it was originally prepared and for which Mott MacDonald Hong Kong Limited was commissioned. Mott MacDonald Limited accepts no responsibility for this document to any other party other than the person by whom it was commissioned.