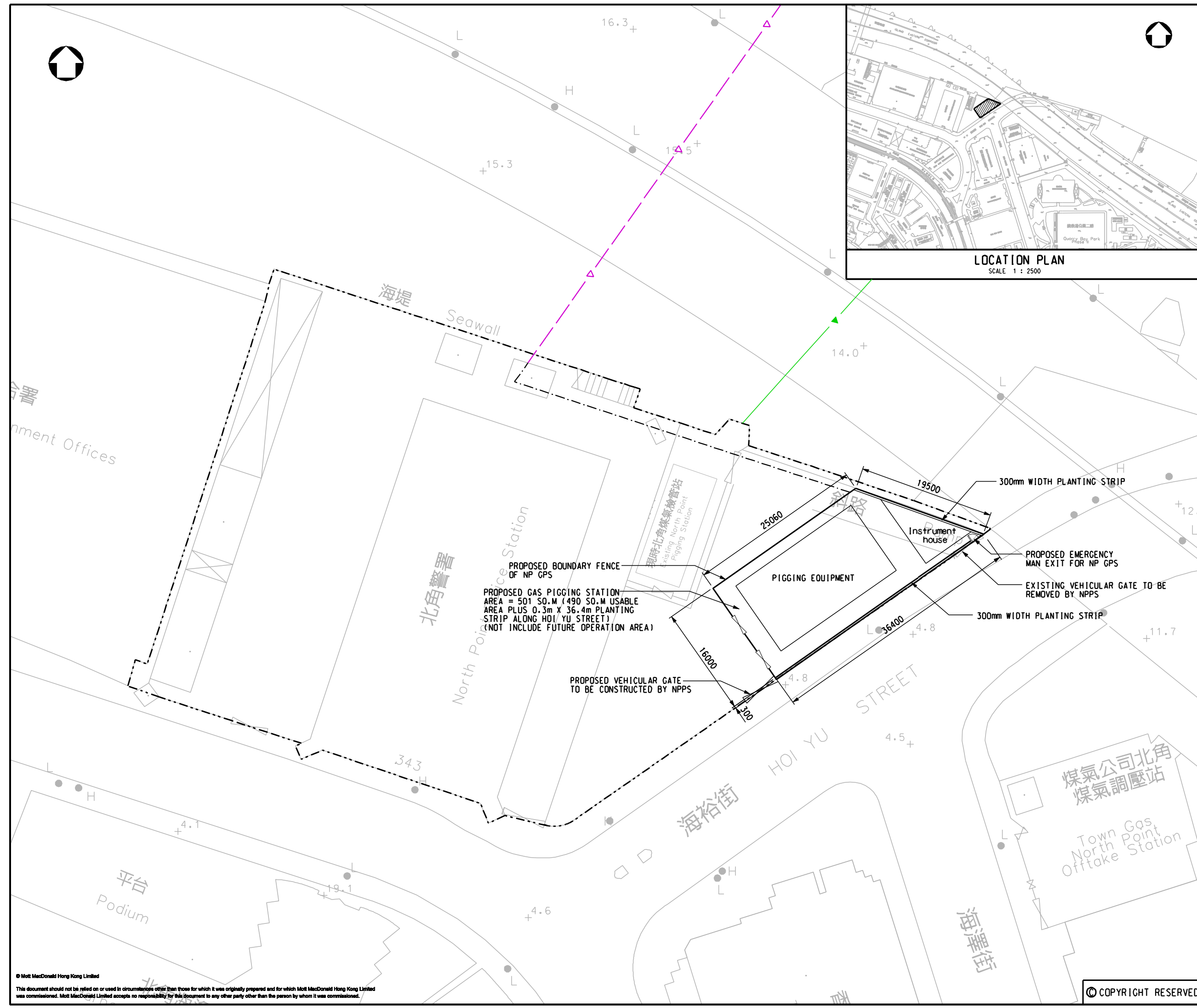
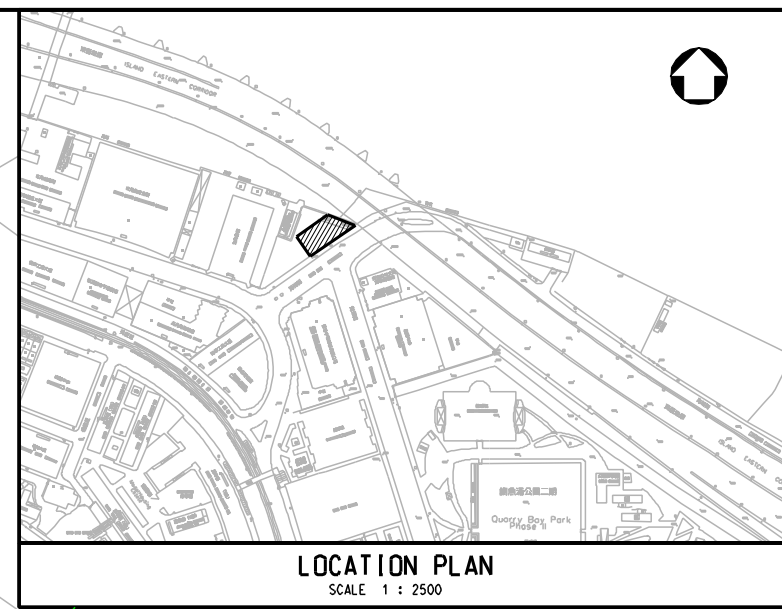




NOTES:
1. ALL DIMENSIONS IN MILLIMETERS UNLESS NOTED OTHERWISE.

- LEGEND:
- PROPOSED GAS PIGGING STATION BOUNDARY
 - BOUNDARY OF NORTH POINT POLICE STATION
 - PROPOSED TWIN SUBMARINE GAS MAINS
 - EXISTING TWIN SUBMARINE GAS MAINS
 - PROPOSED LAND MAIN



P1	APR 10	MING	FIRST ISSUE	FY	T1
Rev	Date	Drawn	Description	Chk'd	App'd

Client

THE HONG KONG AND CHINA GAS COMPANY LIMITED.

Mott MacDonald

7/F West Wing Office Building
New World Centre, 20 Salisbury Road
Tsimshatsui, Kowloon
Hong Kong
T +852 2828 5757
F +852 2827 1828
W www.mottmac.com.hk

Project

INSTALLATION OF SUBMARINE GAS PIPELINES AND ASSOCIATED FACILITIES FROM TO KWA WAN TO NORTH POINT FOR FORMER KAI TAK AIRPORT DEVELOPMENT

Title

PROPOSED CONCEPTUAL LAYOUT OF NORTH POINT PIGGING STATION

Designed	SL	Eng.Chk.	TT
Drawn	CCH	Coordination	SL
Dwg.Chk.	LCH	Approved	T1

Scale	Project	Status
1:250@A1	237926	PRE

Drawing No.	FIGURE 2.11	Rev	P1
-------------	-------------	-----	----

© COPYRIGHT RESERVED