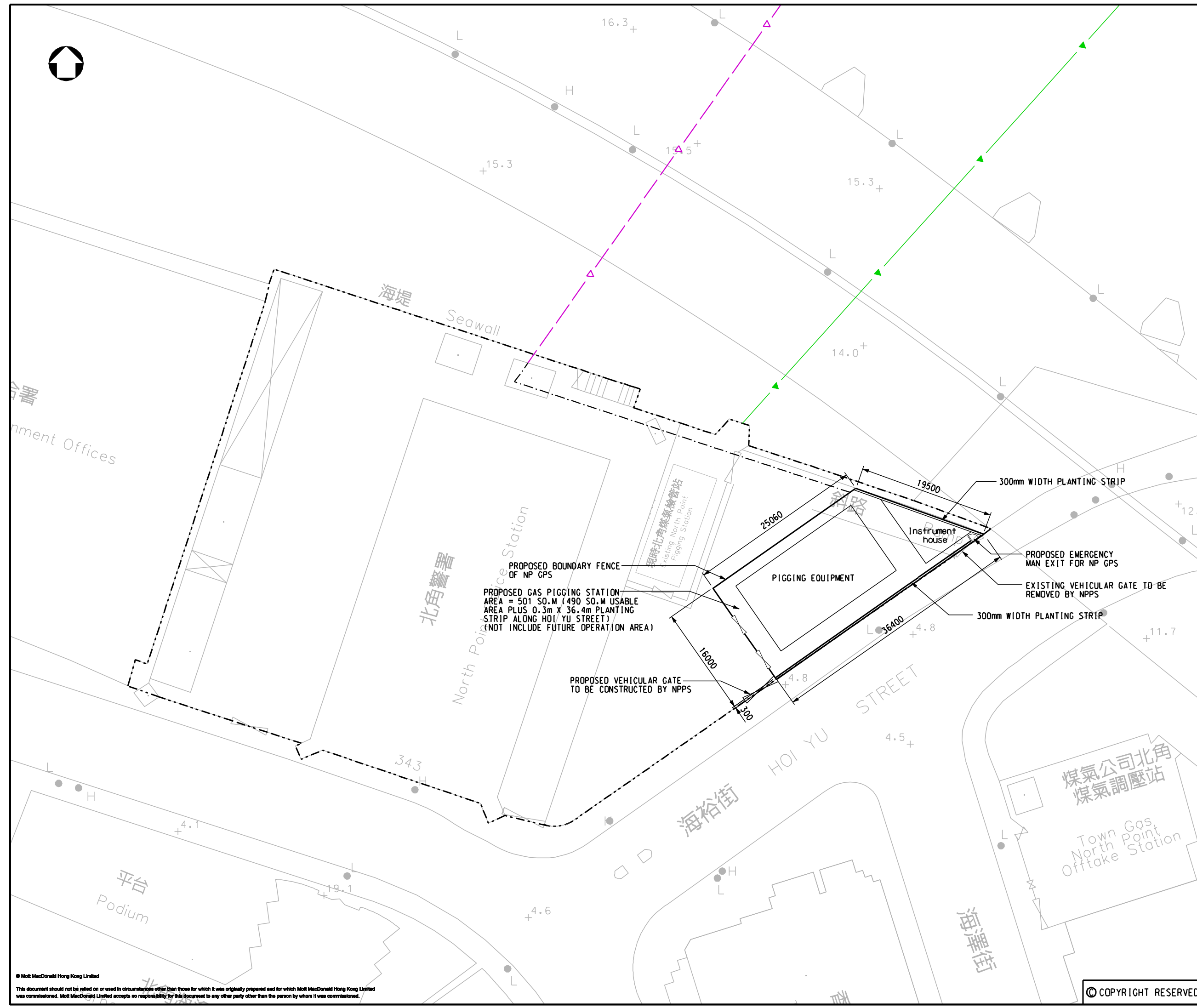




**NOTES:**  
 1. ALL DIMENSIONS IN MILLIMETERS UNLESS NOTED OTHERWISE.

- LEGEND:**
- PROPOSED GAS PIGGING STATION BOUNDARY
  - BOUNDARY OF NORTH POINT POLICE STATION
  - PROPOSED TWIN SUBMARINE GAS MAINS
  - EXISTING TWIN SUBMARINE GAS MAINS
  - PROPOSED LAND MAIN



PROPOSED BOUNDARY FENCE OF NP GPS  
 PROPOSED GAS PIGGING STATION AREA = 501 SQ.M (490 SQ.M USABLE AREA PLUS 0.3m X 36.4m PLANTING STRIP ALONG HOI YU STREET) (NOT INCLUDE FUTURE OPERATION AREA)

PROPOSED VEHICULAR GATE TO BE CONSTRUCTED BY NPSS

PIGGING EQUIPMENT

Instrument house

PROPOSED EMERGENCY MAN EXIT FOR NP GPS

EXISTING VEHICULAR GATE TO BE REMOVED BY NPSS

300mm WIDTH PLANTING STRIP

P1	APR 10	MING	FIRST ISSUE	FY	T1
Rev	Date	Drawn	Description	Chk'd	App'd

Client

THE HONG KONG AND CHINA GAS COMPANY LIMITED.

7/F West Wing Office Building  
 New World Centre, 20 Salisbury Road  
 Tsimshatsui, Kowloon  
 Hong Kong  
 T +852 2828 5757  
 F +852 2827 1828  
 W www.mottmac.com.hk

Project  
 INSTALLATION OF SUBMARINE GAS PIPELINES AND ASSOCIATED FACILITIES FROM TO KWA WAN TO NORTH POINT FOR FORMER KAI TAK AIRPORT DEVELOPMENT

Title  
 PRELIMINARY LAYOUT PLAN OF THE PROPOSED PIGGING STATION AT NORTH POINT

Designed	SL	Eng.Chk.	TT
Drawn	CCH	Coordination	SL
Dwg.Chk.	LCH	Approved	T1

Scale	Project	Status
1:250@A1	237926	PRE
Drawing No.	CAD File	Rev
FIGURE 7.2	J:\237926\REPORT\ENY\EMR0045\FIGURE 7-2.dgn	P1

© COPYRIGHT RESERVED