



Existing View from West – Po Leung Kuk Ngan Po Ling College



The proposed pigging station will be situated in a fenced-off area bound by solid boundary wall (3m height) on 4 sides. The entire site covers an area of approximately 662 square metres. There will be an instrument room inside the proposed gas pigging station and it is a simple structure of about 7m long x 5m wide and with height not exceeding 5m after installation of some equipment on its top such as CCTV camera, air conditioner and solar panels, etc. The instrument room itself is not exceeding 5m in height.

View from West – Po Leung Kuk Ngan Po Ling College with Proposed Pigging Station

Notes: The future school is indicative and shown for context only (to be completed by others)

Rev	Date	Drawn/Description	Chk'd/App'd

Client:



THE HONG KONG AND CHINA GAS COMPANY LIMITED.



7/F West Wing Office Building
New World Centre, 23 Salisbury Road
Tsimshatsui, Kowloon
Hong Kong
☎ +852 2828 6787
☎ +852 2827 1823
www.mottmac.com.hk

Project:

INSTALLATION OF SUBMARINE GAS PIPELINES AND ASSOCIATED FACILITIES FROM TO KWA WAN TO NORTH POINT FOR FORMER KAI TAK AIRPORT DEVELOPMENT

Title:

PHOTOMONTAGES FOR PIGGING STATION AT TO KWA WAN (1)

Designed		Eng.Chk.	
Drawn		Coordination	
Desg.Chk.		Approved	
Scale	Project	Status	
	CAD File J:\231926\MMH-231926-P-AI-TLS-HLdgn		
Drawing No.		Rev	



Existing View from North – Hoi Sham Park



The proposed pigging station will be situated in a fenced-off area bound by solid boundary wall (3m height) on 4 sides. The entire site covers an area of approximately 662 square metres. There will be an instrument room inside the proposed gas pigging station and it is a simple structure of about 7m long x 5m wide and with height not exceeding 5m after installation of some equipment on its top such as CCTV camera, air conditioner and solar panels, etc. The instrument room itself is not exceeding 5m in height.

View from North – Hoi Sham Park with Proposed Pigging Station

Notes: The promenade and open space are indicative and shown for context only (to be completed by others)

Rev	Date	Drawn/Description	Chk'd/App'd

Client:

THE HONG KONG AND CHINA GAS COMPANY LIMITED.

7/F West Wing Office Building
 New World Centre, 23 Salisbury Road
 Tsimshatsui, Kowloon
 Hong Kong
 ☎ +852 2828 6787
 ☎ +852 2827 1823
 www.mottmac.com.hk

Project:
INSTALLATION OF SUBMARINE GAS PIPELINES AND ASSOCIATED FACILITIES FROM TO KWA WAN TO NORTH POINT FOR FORMER KAI TAK AIRPORT DEVELOPMENT

Title:
PHOTOMONTAGES FOR PIGGING STATION AT TO KWA WAN (2)

Designed		Eng.Chk.	
Drawn		Coordination	
Eng.Chk.		Approved	
Scale	Project	Status	
	CAD File J:\231926\MMH-231926-P-AI-TLS-HL.dgn		
Drawing No.		Rev	



Existing View from South – Bailey Street



The proposed pigging station will be situated in a fenced-off area bound by solid boundary wall (3m height) on 4 sides. The entire site covers an area of approximately 662 square metres. There will be an instrument room inside the proposed gas pigging station and it is a simple structure of about 7m long x 5m wide and with height not exceeding 5m after installation of some equipment on its top such as CCTV camera, air conditioner and solar panels, etc. The instrument room itself is not exceeding 5m in height.

View from North – Hoi Sham Park with Proposed Pigging Station

Notes: The future school is indicative and shown for context only (to be completed by others)

Rev	Date	Drawn/Description	Chk'd/App'd

Client:

THE HONG KONG AND CHINA GAS COMPANY LIMITED.

Mott MacDonald

7/F West Wing Office Building
New World Centre, 23 Salisbury Road
Tsimshatsui, Kowloon
Hong Kong
+852 2828 6787
+852 2827 1823
www.mottmac.com.hk

Project:

INSTALLATION OF SUBMARINE GAS PIPELINES AND ASSOCIATED FACILITIES FROM TO KWA WAN TO NORTH POINT FOR FORMER KAI TAK AIRPORT DEVELOPMENT

Title:

PHOTOMONTAGES FOR PIGGING STATION AT TO KWA WAN (3)

Designed		Eng.Chk.	
Drawn		Coordination	
Eng.Chk.		Approved	
Scale	Project	Status	
	CAD File J:\231926\MMH-231926-P-AL-TLS-HL.dgn		
Drawing No.		Rev	



Existing View from South – A.B.P. Centre



Notes: The future school, promenade and open space are indicative and shown for context only (to be completed by others)

The proposed pigging station will be situated in a fenced-off area bound by solid boundary wall (3m height) on 4 sides. The entire site covers an area of approximately 662 square metres. There will be an instrument room inside the proposed gas pigging station and it is a simple structure of about 7m long x 5m wide and with height not exceeding 5m after installation of some equipment on its top such as CCTV camera, air conditioner and solar panels, etc. The instrument room itself is not exceeding 5m in height.

View from South – A.B.P. Centre with Proposed Pigging Station

Rev	Date	Drawn/Description	Chk'd/App'd

Client:

THE HONG KONG AND CHINA GAS COMPANY LIMITED.

7/F West Wing Office Building
New World Centre, 23 Salisbury Road
Tsimshatsui, Kowloon
Hong Kong
☎ +852 2828 6787
☎ +852 2827 1823
www.mottmac.com.hk

Project:
INSTALLATION OF SUBMARINE GAS PIPELINES AND ASSOCIATED FACILITIES FROM TO KWA WAN TO NORTH POINT FOR FORMER KAI TAK AIRPORT DEVELOPMENT

Title:
PHOTOMONTAGES FOR PIGGING STATION AT TO KWA WAN (4)

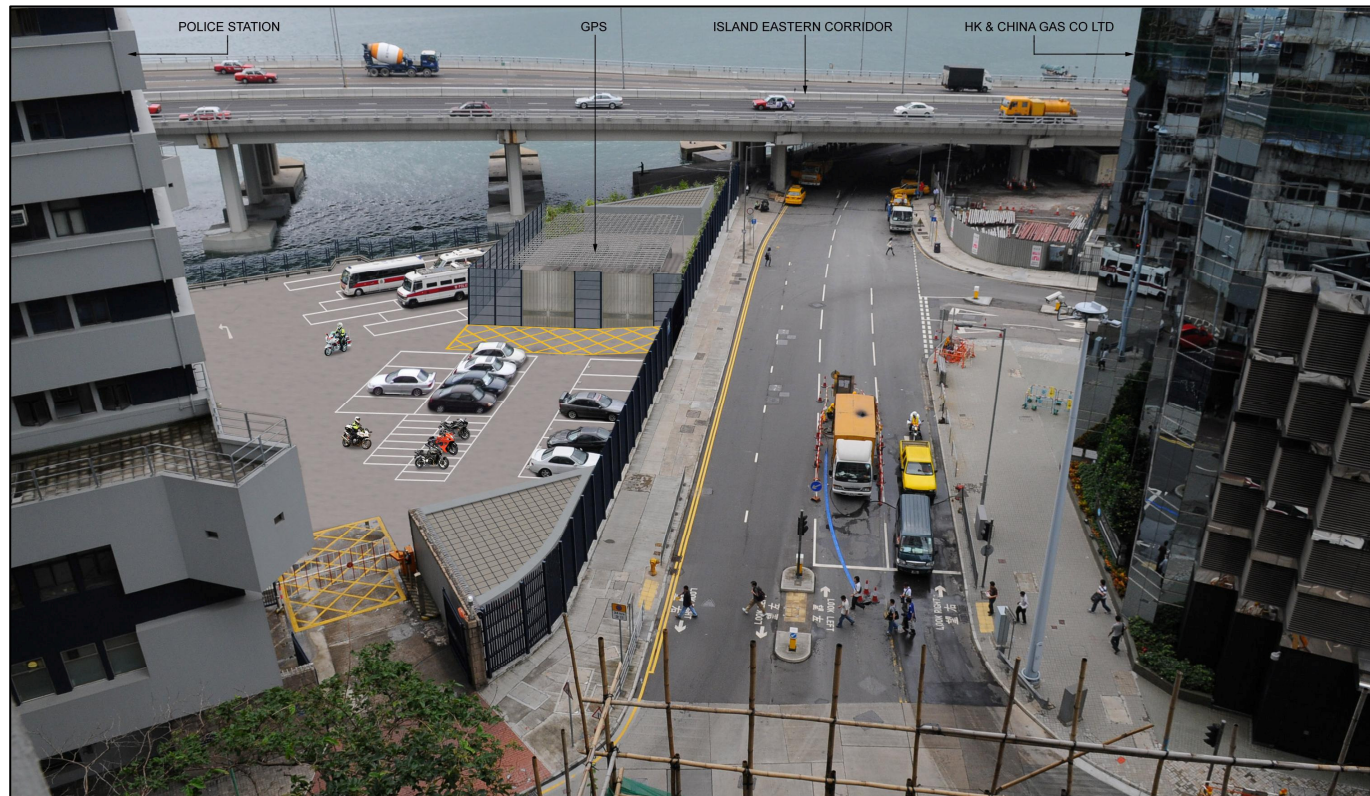
Designed		Eng.Chk.	
Drawn		Coordination	
Eng.Chk.		Approved	
Scale		Project	Status
		CAD File J:\231926\MMH-231926-P-AI-TLS-HLdgn	
Drawing No.			Rev

© COPYRIGHT RESERVED

FIGURE 8.17



Existing View from Southwest – Wing Wah Industrial Building




The proposed pigging station will be situated in a fenced-off area bound by boundary fence. The entire site covers a usable area of 490 square metres with additional 300mm wide landscaping strip along Hoi Yu Street. There will be an instrument room inside the proposed pigging station and it is a simple structure with height of the structure not exceeding 3m. Some equipments, such as CCTV camera, air conditioner and solar panels, etc, will be installed at the roof of the instrument room while the total height will not exceed 5m high.


View from Southwest – Wing Wah Industrial Building with Proposed Pigging Station

Rev	Date	Drawn/Description	Chk'd	App'd

Client:



THE HONG KONG AND CHINA GAS COMPANY LIMITED.



7/F West Wing Office Building
New World Centre, 23 Salisbury Road
Tsimshatsui, Kowloon
Hong Kong
☎ +852 2828 6787
☎ +852 2827 1823
www.mottmac.com.hk

Project:

INSTALLATION OF SUBMARINE GAS PIPELINES AND ASSOCIATED FACILITIES FROM TO KWA WAN TO NORTH POINT FOR FORMER KAI TAK AIRPORT DEVELOPMENT

Title:

PHOTOMONTAGES FOR PIGGING STATION AT NORTH POINT (1)

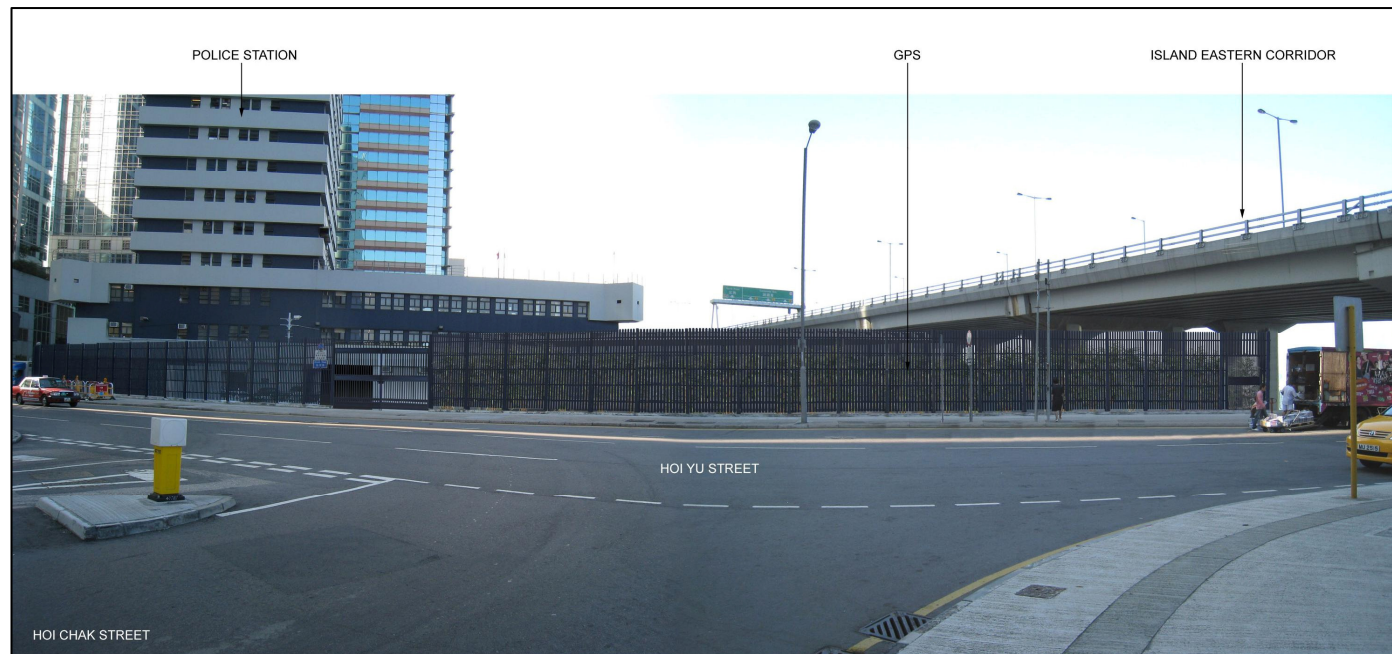
Designed		Eng.Chk.	
Drawn		Coordination	
Des.Chk.		Approved	
Scale	Project	Status	
	CAD File J:\231926\MMH-231926-P-AL-TLS-HL.dgn		
Drawing No.		Rev	

© COPYRIGHT RESERVED

FIGURE 8.18



Existing View from Southeast – Hoi Chak Street



The proposed pigging station will be situated in a fenced-off area bound by boundary fence. The entire site covers a usable area of 490 square metres with additional 300mm wide landscaping strip along Hoi Yu Street. There will be an instrument room inside the proposed pigging station and it is a simple structure with height of the structure not exceeding 3m. Some equipments, such as CCTV camera, air conditioner and solar panels, etc, will be installed at the roof of the instrument room while the total height will not exceed 5m high.

View from Southeast – Hoi Chak Street with Proposed Pigging Station

Rev	Date	Drawn/Description	Chk'd/App'd

Client:

THE HONG KONG AND CHINA GAS COMPANY LIMITED.

Mott MacDonald

7/F West Wing Office Building
New World Centre, 23 Salisbury Road
Tsimshatsui, Kowloon
Hong Kong
☎ +852 2828 6787
☎ +852 2827 1823
www.mottmac.com.hk

Project:

INSTALLATION OF SUBMARINE GAS PIPELINES AND ASSOCIATED FACILITIES FROM TO KWA WAN TO NORTH POINT FOR FORMER KAI TAK AIRPORT DEVELOPMENT

Title:

PHOTOMONTAGES FOR PIGGING STATION AT NORTH POINT (2)

Designed		Eng.Chk.	
Drawn		Coordination	
Des.Chk.		Approved	
Scale	Project	Status	
	CAD File J:\231926\MMH-231926-P-AL-TLS-HL.dgn		
Drawing No.		Rev	



Existing View from Northeast – future Promenade



The proposed pigging station will be situated in a fenced-off area bound by boundary fence. The entire site covers a usable area of 490 square metres with additional 300mm wide landscaping strip along Hoi Yu Street. There will be an instrument room inside the proposed pigging station and it is a simple structure with height of the structure not exceeding 3m. Some equipments, such as CCTV camera, air conditioner and solar panels, etc, will be installed at the roof of the instrument room while the total height will not exceed 5m high.

View from Northeast – the waterfront area with Proposed Pigging Station

Rev	Date	Drawn/Description	Chk'd/App'd

Client:

THE HONG KONG AND CHINA GAS COMPANY LIMITED.

7/F West Wing Office Building
New World Centre, 23 Salisbury Road
Tsimshatsui, Kowloon
Hong Kong
☎ +852 2828 6787
☎ +852 2827 1823
www.mottmac.com.hk

Project:

INSTALLATION OF SUBMARINE GAS PIPELINES AND ASSOCIATED FACILITIES FROM TO KWA WAN TO NORTH POINT FOR FORMER KAI TAK AIRPORT DEVELOPMENT

Title:

PHOTOMONTAGES FOR PIGGING STATION AT NORTH POINT (3)

Designed		Eng.Chk.	
Drawn		Coordination	
Eng.Chk.		Approved	
Scale		Project	Status
		CAD File	
		J:\231926\MMH-231926-P-A1-TLS-HL.dgn	
Drawing No.			Rev