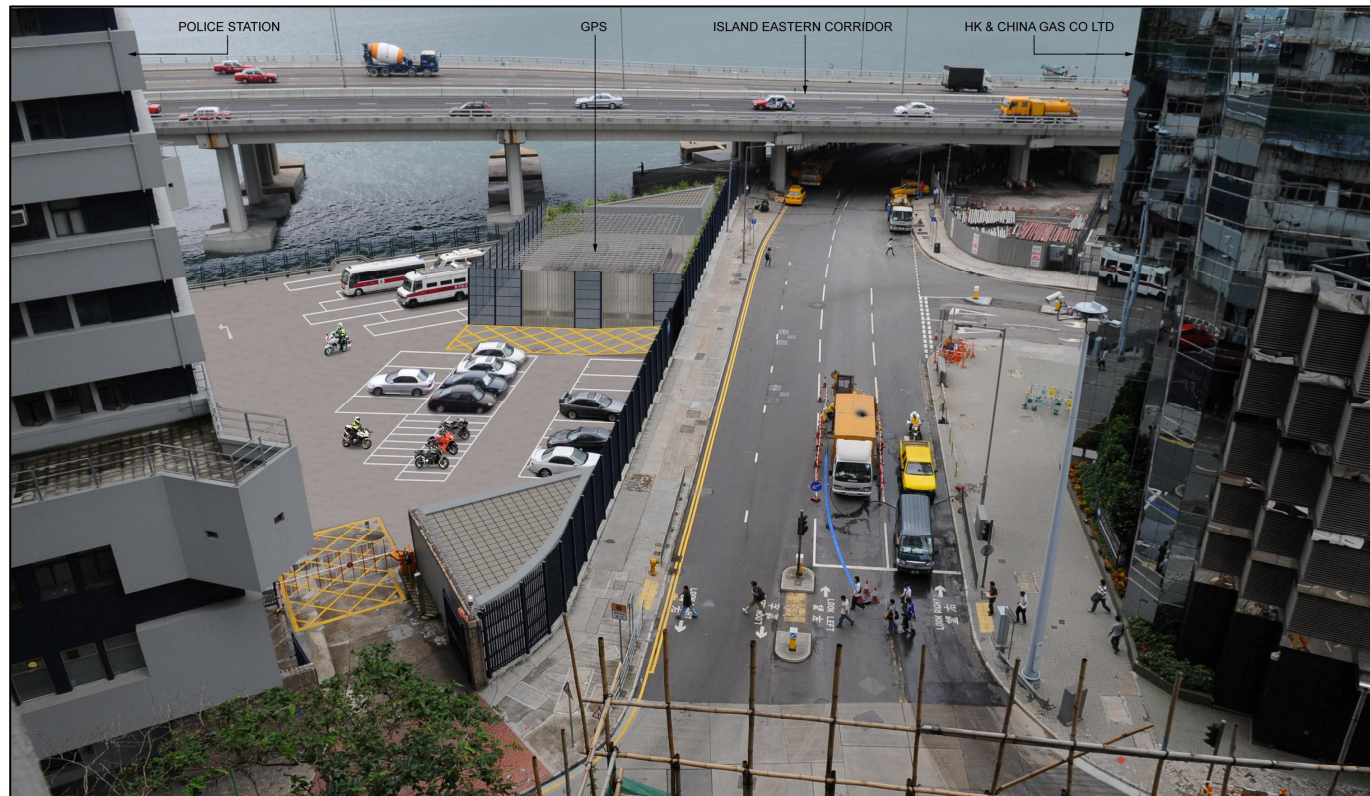




Existing View from Southwest – Wing Wah Industrial Building




The proposed pigging station will be situated in a fenced-off area bound by boundary fence. The entire site covers a usable area of 490 square metres with additional 300mm wide landscaping strip along Hoi Yu Street. There will be an instrument room inside the proposed pigging station and it is a simple structure with height of the structure not exceeding 3m. Some equipments, such as CCTV camera, air conditioner and solar panels, etc, will be installed at the roof of the instrument room while the total height will not exceed 5m high.


View from Southwest – Wing Wah Industrial Building with Proposed Pigging Station

Rev	Date	Drawn/Description	Chk'd	App'd

Client:



THE HONG KONG AND CHINA GAS COMPANY LIMITED.



7/F West Wing Office Building
New World Centre, 23 Salisbury Road
Tsimshatsui, Kowloon
Hong Kong
☎ +852 2828 6787
☎ +852 2827 1823
www.mottmac.com.hk

Project:

INSTALLATION OF SUBMARINE GAS PIPELINES AND ASSOCIATED FACILITIES FROM TO KWA WAN TO NORTH POINT FOR FORMER KAI TAK AIRPORT DEVELOPMENT

Title:

PHOTOMONTAGES FOR PIGGING STATION AT NORTH POINT (1)

Designed		Eng.Chk.	
Drawn		Coordination	
Des.Chk.		Approved	
Scale	Project	Status	
	CAD File J:\231926\MMH-231926-P-AL-TLS-HLdgn		
Drawing No.		Rev	