

Figure 2.2: Sounding Data for Area A from MD 2000.

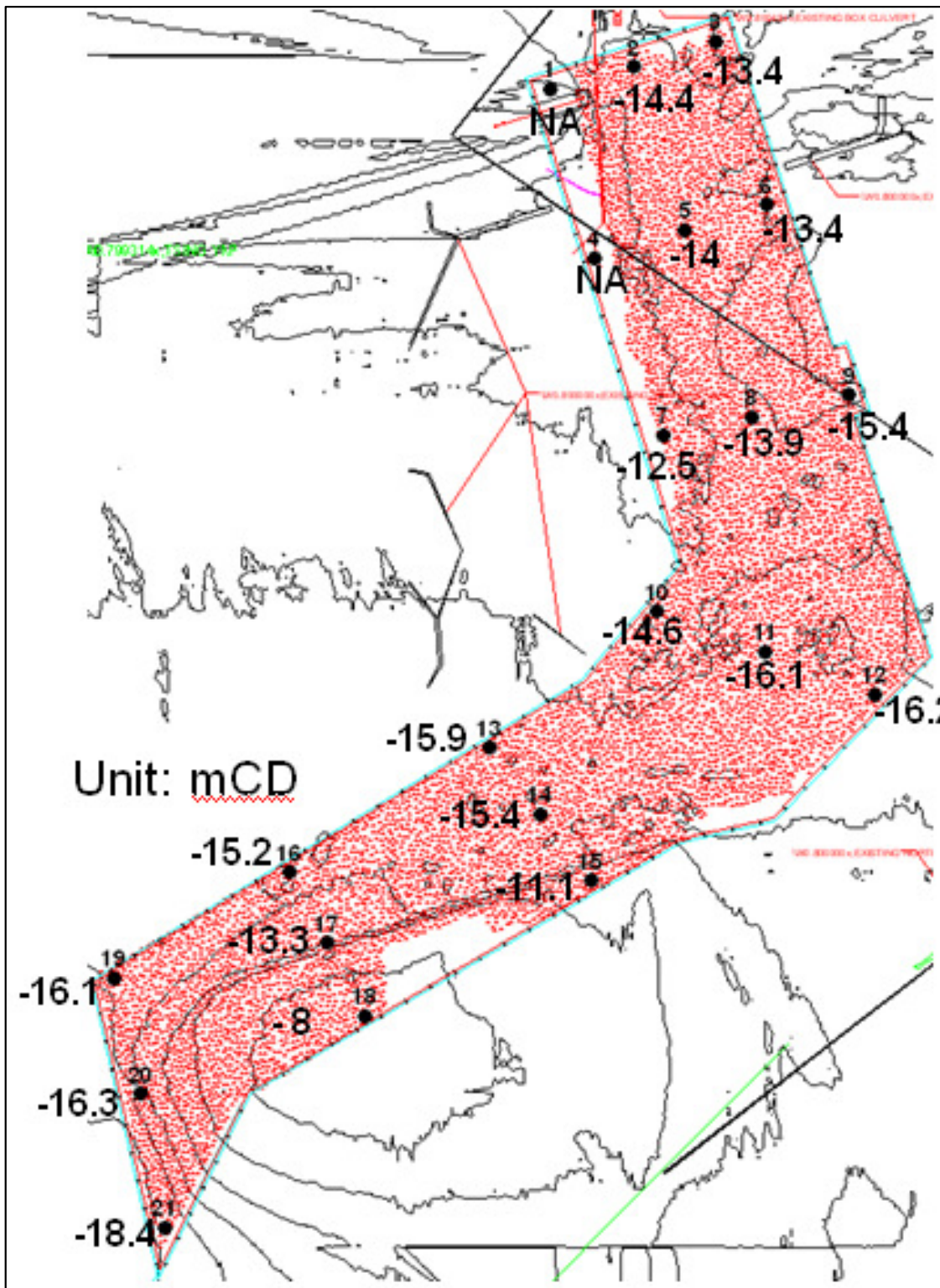
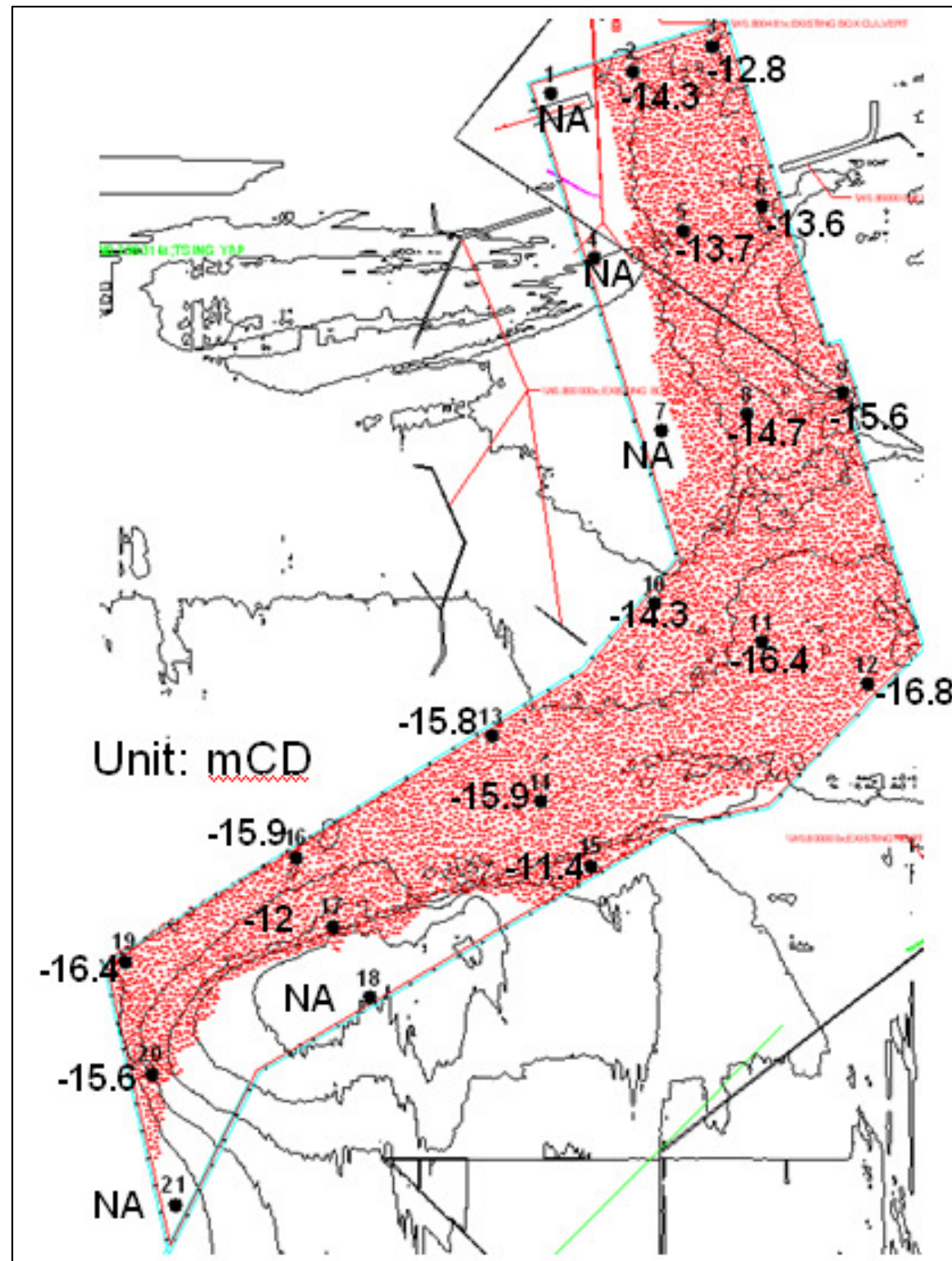



Figure 2.3: Sounding Data for Area A from MD 2001.



Rev	Date	Drawn	Description	Chk'd	App'd



20/F Two Landmark East  
100 How Ming Street  
Kowloon, Kowloon  
Hong Kong  
T +852 2828 5757  
F +852 2827 1823  
W www.mottmac.com.hk

Client  
 THE GOVERNMENT OF THE HONG KONG  
SPECIAL ADMINISTRATIVE REGION  
CIVIL ENGINEERING  
AND DEVELOPMENT DEPARTMENT

Project  
 PROVIDING SUFFICIENT WATER DEPTH FOR  
KWAI TSING CONTAINER BASIN AND ITS  
APPROACH CHANNEL

Title  
**Chapter 2 Figures**

Designed		Eng check	
Drawn		Coordination	
Dwg check		Approved	
Scale	Status		Rev

Drawing Number



Figure 2.4: Sounding Data for Area A from MD 2002.

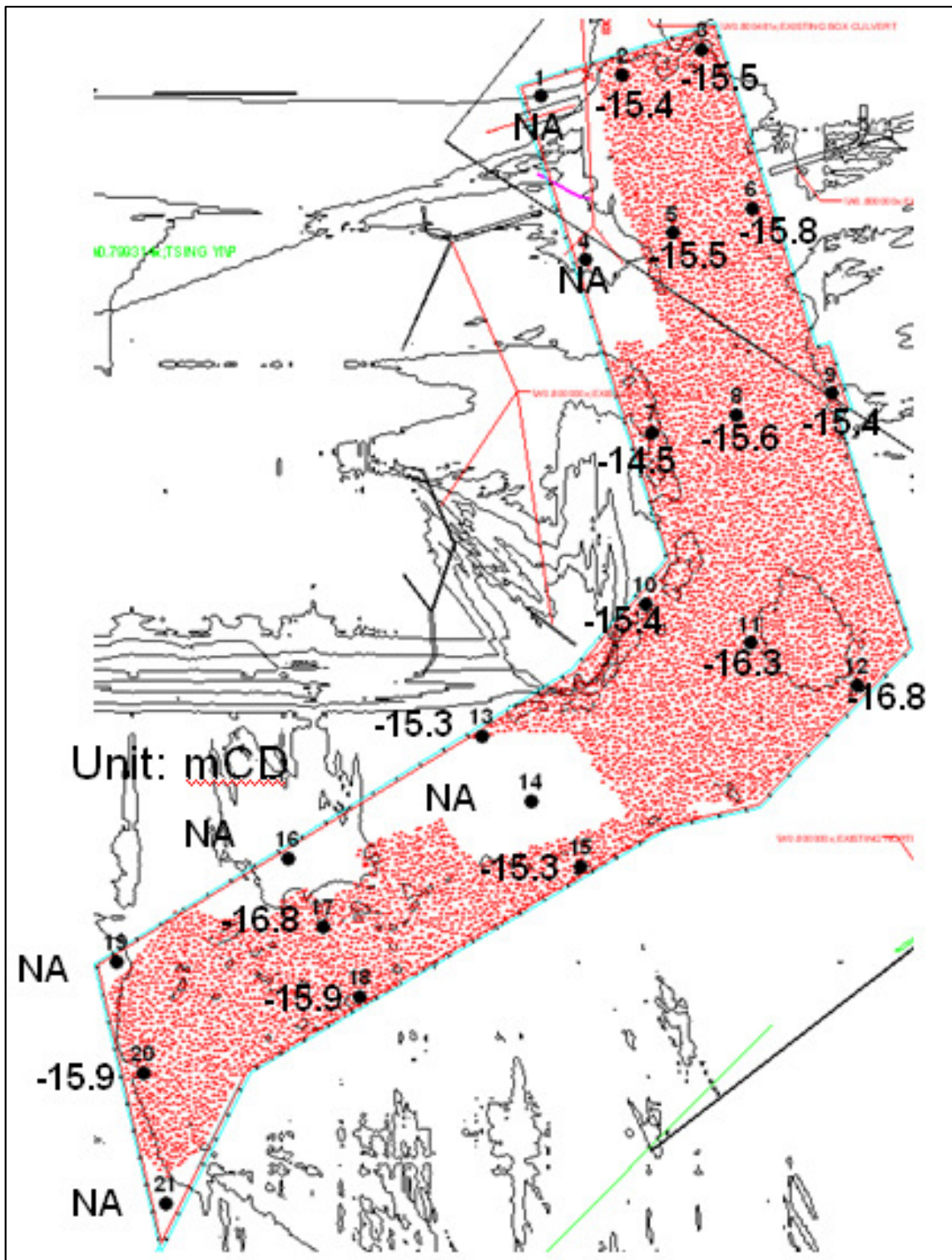
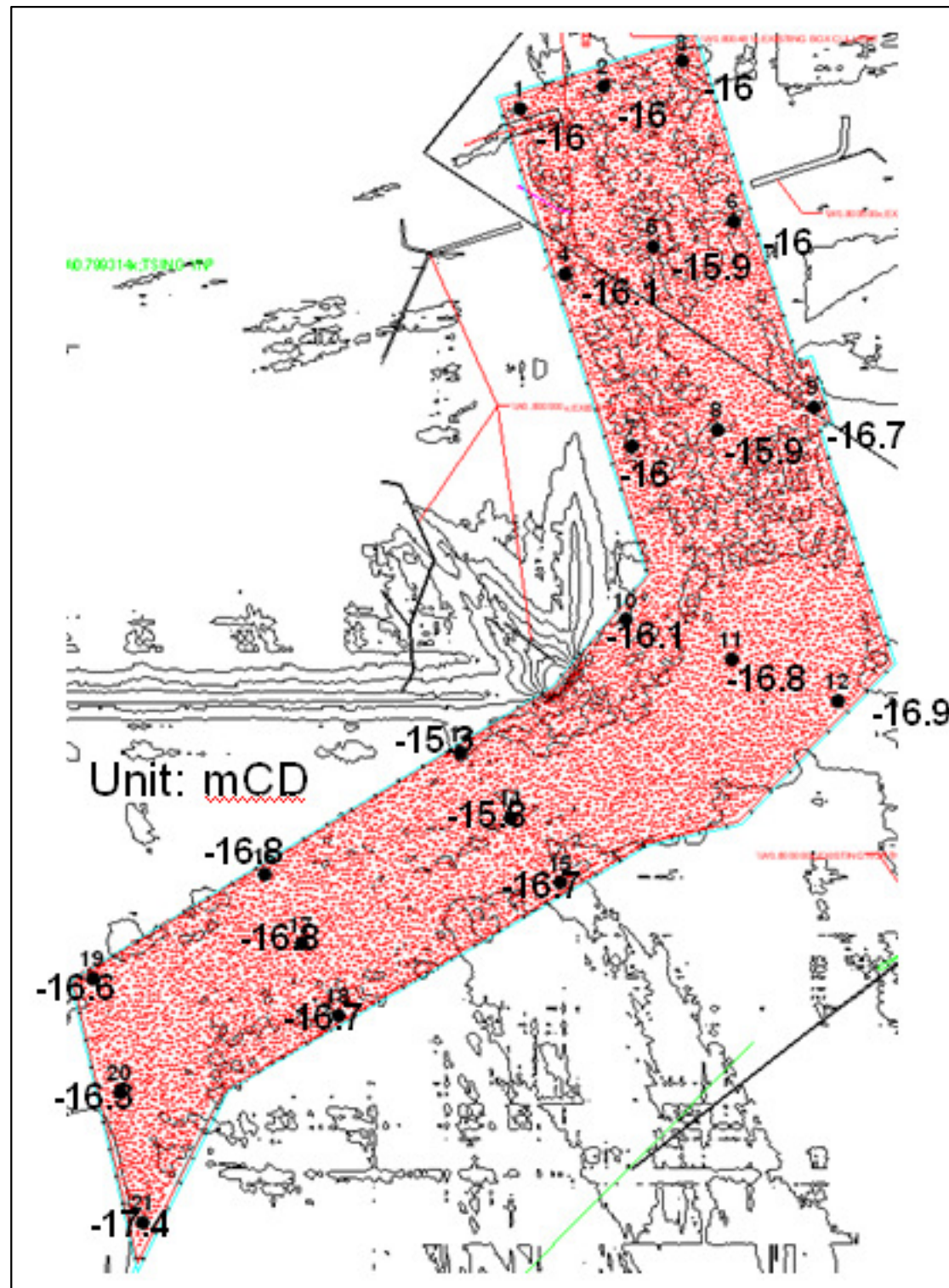


Figure 2.5: Sounding Data for Area A from MD 2003.




© Mott MacDonald Hong Kong Limited  
 This document should not be relied on or used in circumstances other than those for which it was originally prepared and for which Mott MacDonald Hong Kong Limited was commissioned. Mott MacDonald Limited accepts no responsibility for this document to any other party other than the person by whom it was commissioned.  
 Map / image data reproduced with permission of the Director of Lands, the Government of Hong Kong SAR, Agreement No. 63 / 2008

Rev	Date	Drawn	Description	Chk'd	App'd



20/F Two Landmark East  
 100 How Ming Street  
 Kowloon, Kowloon  
 Hong Kong  
 T +852 2828 5757  
 F +852 2827 1823  
 www.mottmac.com.hk

Client  
 THE GOVERNMENT OF THE HONG KONG  
 SPECIAL ADMINISTRATIVE REGION  
 CIVIL ENGINEERING  
 AND DEVELOPMENT DEPARTMENT

Project  
 PROVIDING SUFFICIENT WATER DEPTH FOR  
 KWAI TSING CONTAINER BASIN AND ITS  
 APPROACH CHANNEL

## Chapter 2 Figures

Designed		Eng check	
Drawn		Coordination	
Dwg check		Approved	
Scale	Status	Rev	
Drawing Number			



Figure 2.6: Sounding Data for Area A from MD 2004.

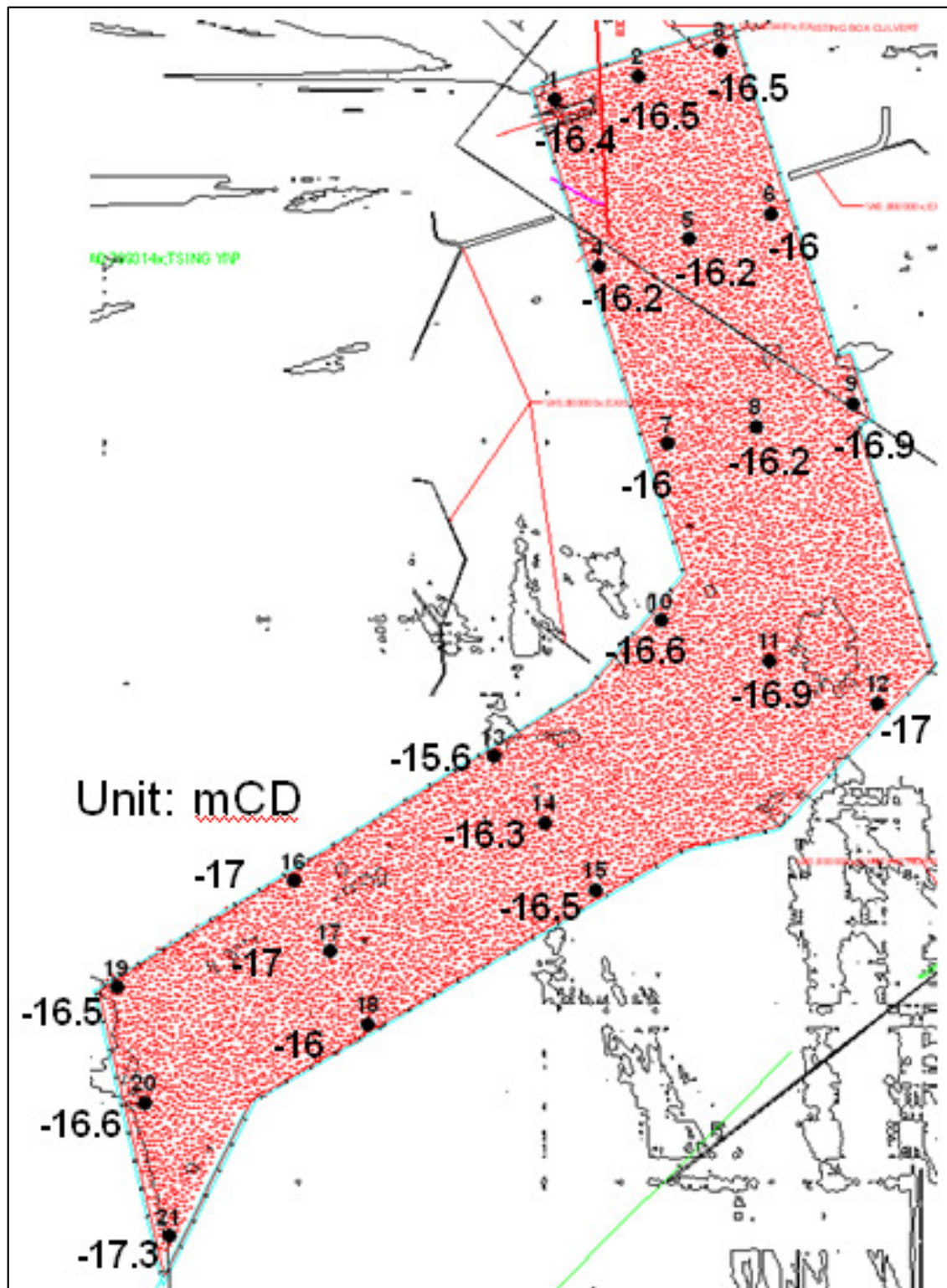
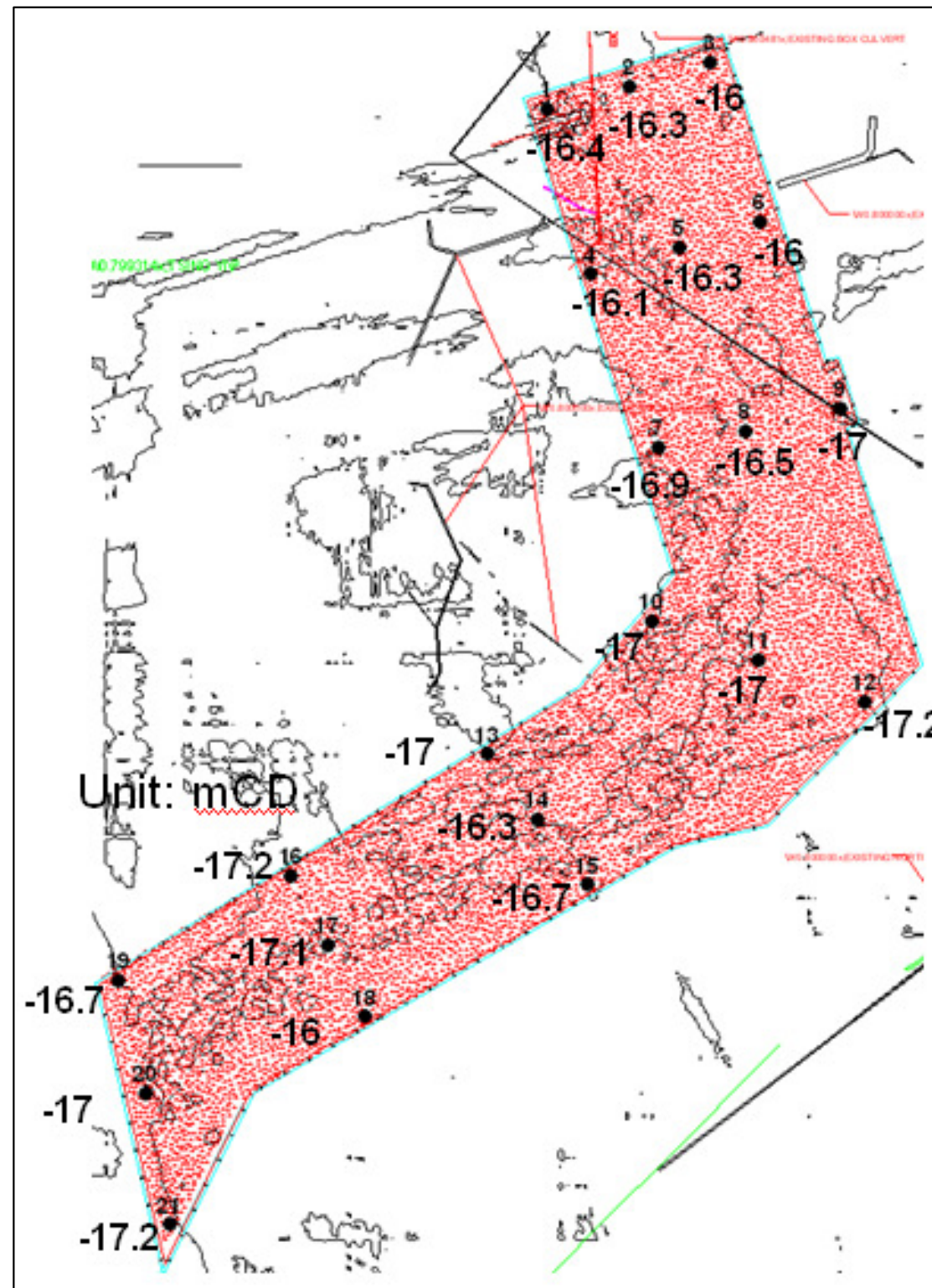


Figure 2.7: Sounding Data for Area A from MD 2005.



© Mott MacDonald Hong Kong Limited  
 This document should not be relied on or used in circumstances other than those for which it was originally prepared and for which Mott MacDonald Hong Kong Limited was commissioned. Mott MacDonald Limited accepts no responsibility for this document to any other party other than the person by whom it was commissioned.  
 Map / image data reproduced with permission of the Director of Lands, the Government of Hong Kong SAR, Agreement No. 63 / 2008

Rev	Date	Drawn	Description	Chk'd	App'd

20/F Two Landmark East  
 100 How Ming Street  
 Kowloon, Kowloon  
 Hong Kong  
 T +852 2828 5757  
 F +852 2827 1823  
 W www.mottmac.com.hk

Client  
 THE GOVERNMENT OF THE HONG KONG  
 SPECIAL ADMINISTRATIVE REGION  
 CIVIL ENGINEERING  
 AND DEVELOPMENT DEPARTMENT

Project  
 PROVIDING SUFFICIENT WATER DEPTH FOR  
 KWAI TSING CONTAINER BASIN AND ITS  
 APPROACH CHANNEL

## Chapter 2 Figures

Designed		Eng check	
Drawn		Coordination	
Dwg check		Approved	
Scale	Status	Rev	

Drawing Number







Figure 2.10: Sounding Data for Area A from MD 2008.

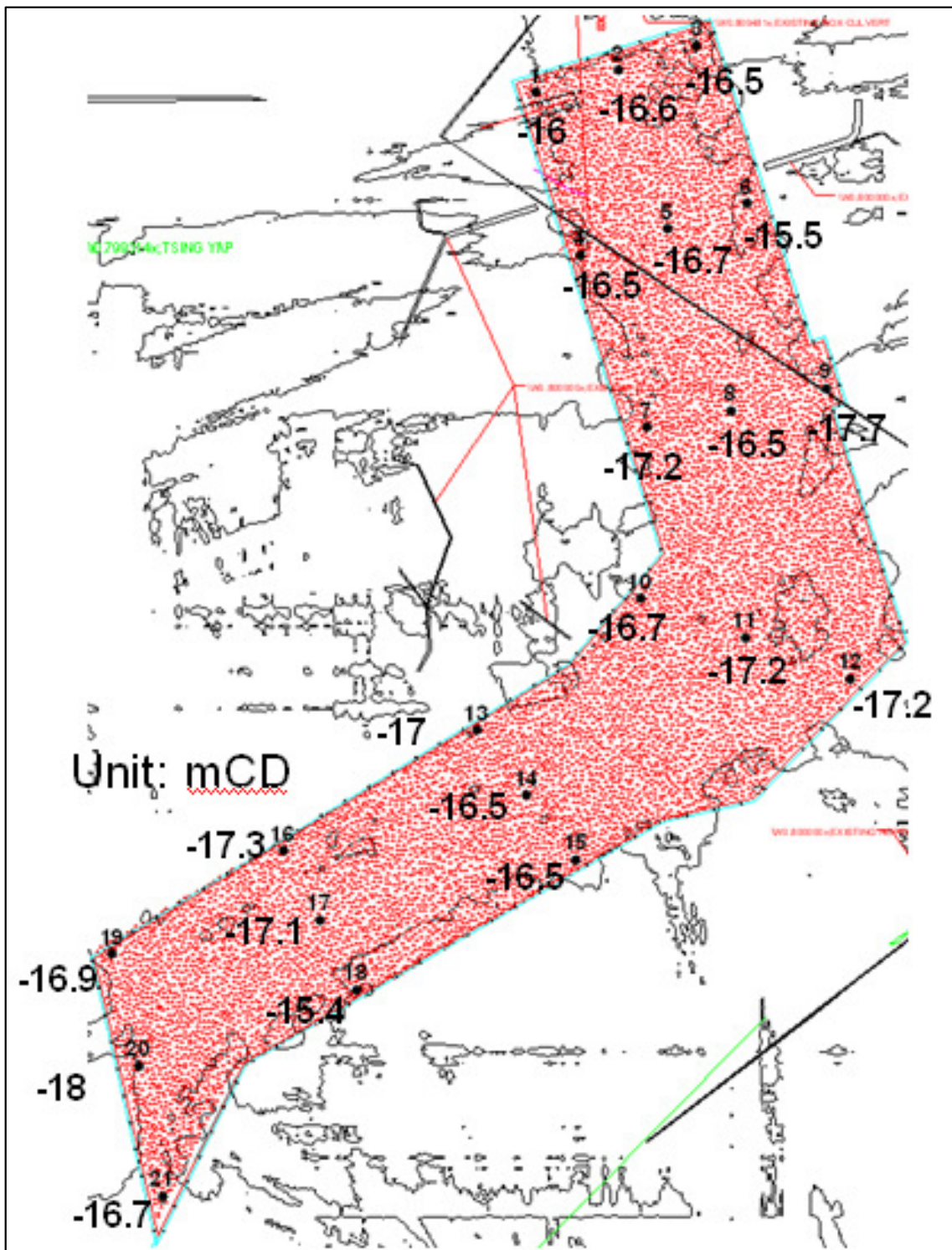
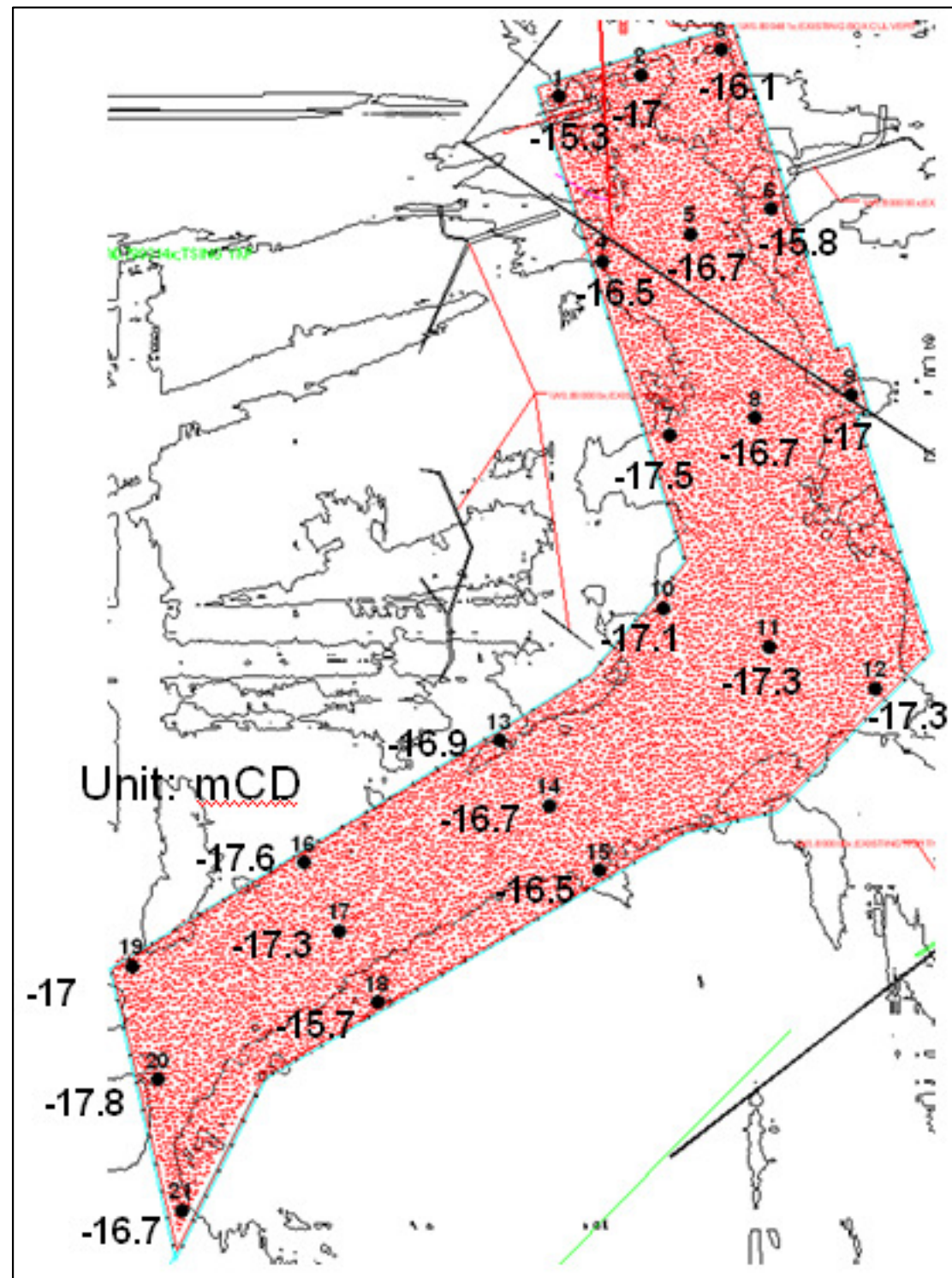



Figure 2.11: Sounding Data for Area A from MD 2009.



© Mott MacDonald Hong Kong Limited  
 This document should not be relied on or used in circumstances other than those for which it was originally prepared and for which Mott MacDonald Hong Kong Limited was commissioned. Mott MacDonald Limited accepts no responsibility for this document to any other party other than the person by whom it was commissioned.  
 Map / image data reproduced with permission of the Director of Lands, the Government of Hong Kong SAR, Agreement No. 63 / 2008

Rev	Date	Drawn	Description	Chk'd	App'd

**Mott MacDonald**  
 20/F Two Landmark East  
 100 How Ming Street  
 Kowloon, Kowloon  
 Hong Kong  
 T +852 2828 5757  
 F +852 2827 1823  
 W www.mottmac.com.hk

Client  
 THE GOVERNMENT OF THE HONG KONG SPECIAL ADMINISTRATIVE REGION  
 CIVIL ENGINEERING AND DEVELOPMENT DEPARTMENT

Project  
 PROVIDING SUFFICIENT WATER DEPTH FOR KWAI TSING CONTAINER BASIN AND ITS APPROACH CHANNEL

Title  

## Chapter 2 Figures

Designed		Eng check	
Drawn		Coordination	
Dwg check		Approved	
Scale	Status	Rev	

Drawing Number



Figure 2.12: Sounding Data for Area A from EGS 2009.

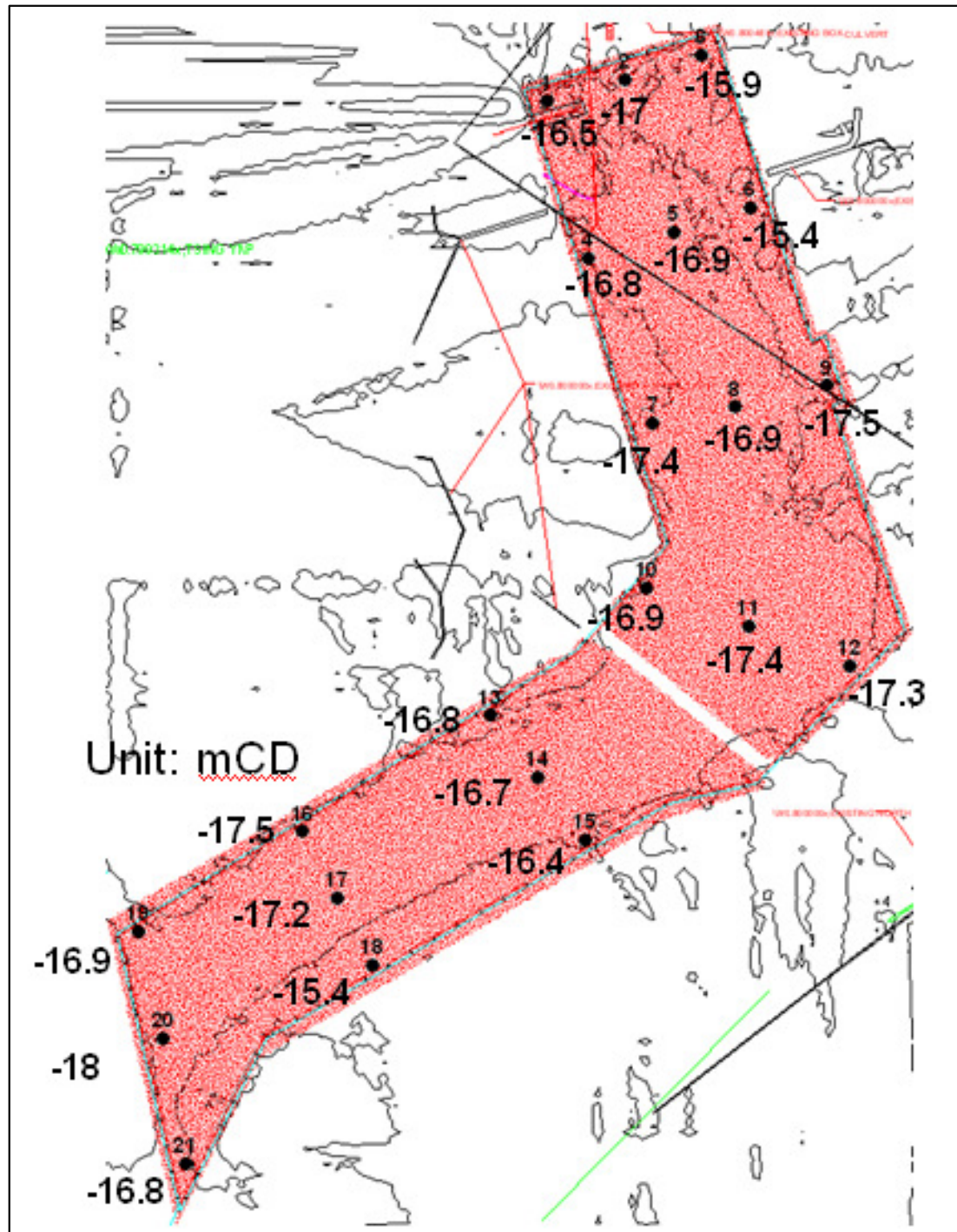
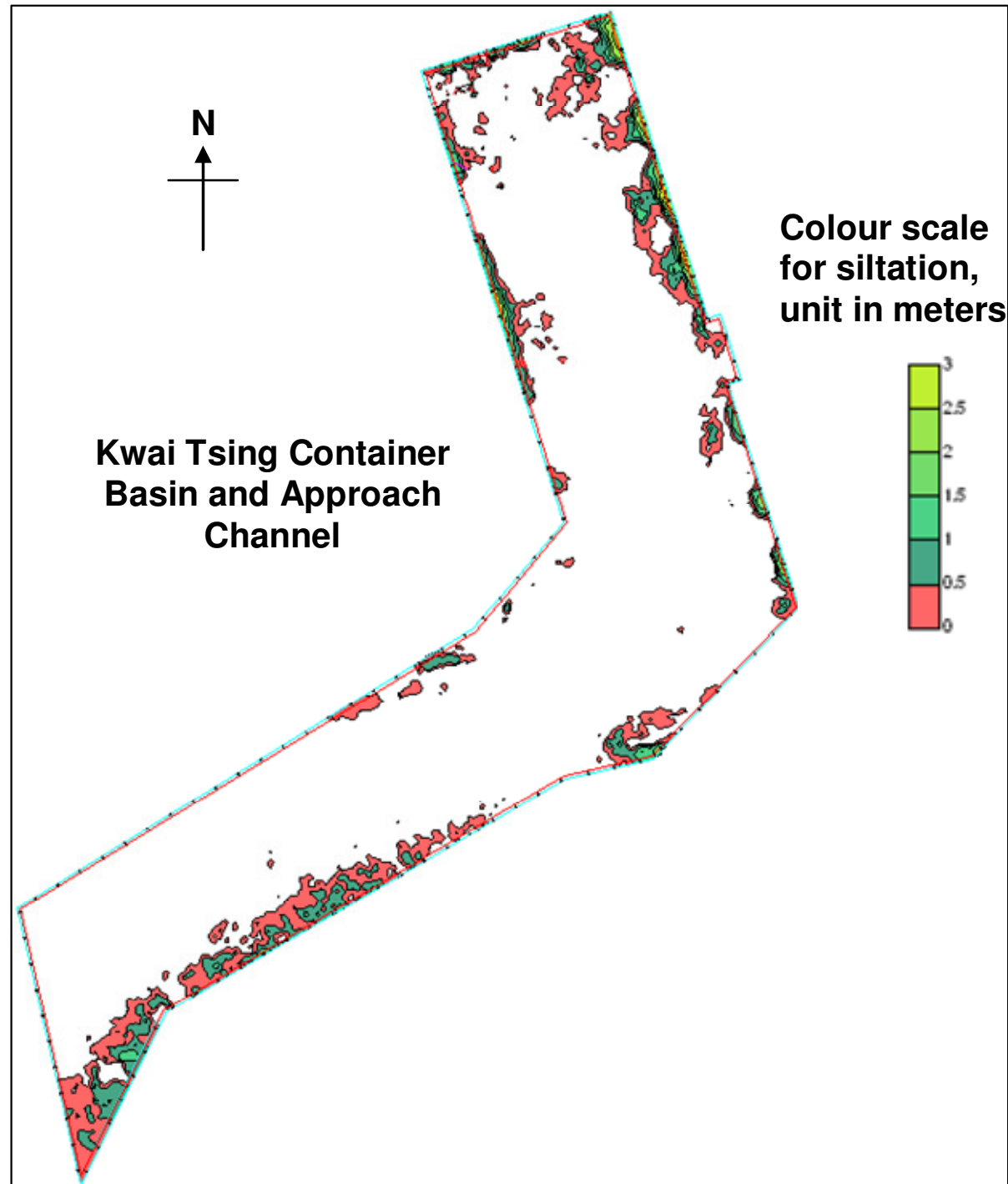


Figure 2.13: Siltation Map for Area A 2003 – 2009.



Unit: mCD

Kwai Tsing Container Basin and Approach Channel


Colour scale for siltation, unit in meters



Rev	Date	Drawn	Description	Chk'd	App'd



20/F Two Landmark East  
100 How Ming Street  
Kowloon, Kowloon  
Hong Kong  
T +852 2828 5757  
F +852 2827 1823  
W www.mottmac.com.hk

Client  
 THE GOVERNMENT OF THE HONG KONG  
SPECIAL ADMINISTRATIVE REGION  
CIVIL ENGINEERING  
AND DEVELOPMENT DEPARTMENT

Project  
 PROVIDING SUFFICIENT WATER DEPTH FOR  
KWAI TSING CONTAINER BASIN AND ITS  
APPROACH CHANNEL

Title  
**Chapter 2 Figures**

Designed		Eng check	
Drawn		Coordination	
Dwg check		Approved	
Scale	Status	Rev	

Drawing Number