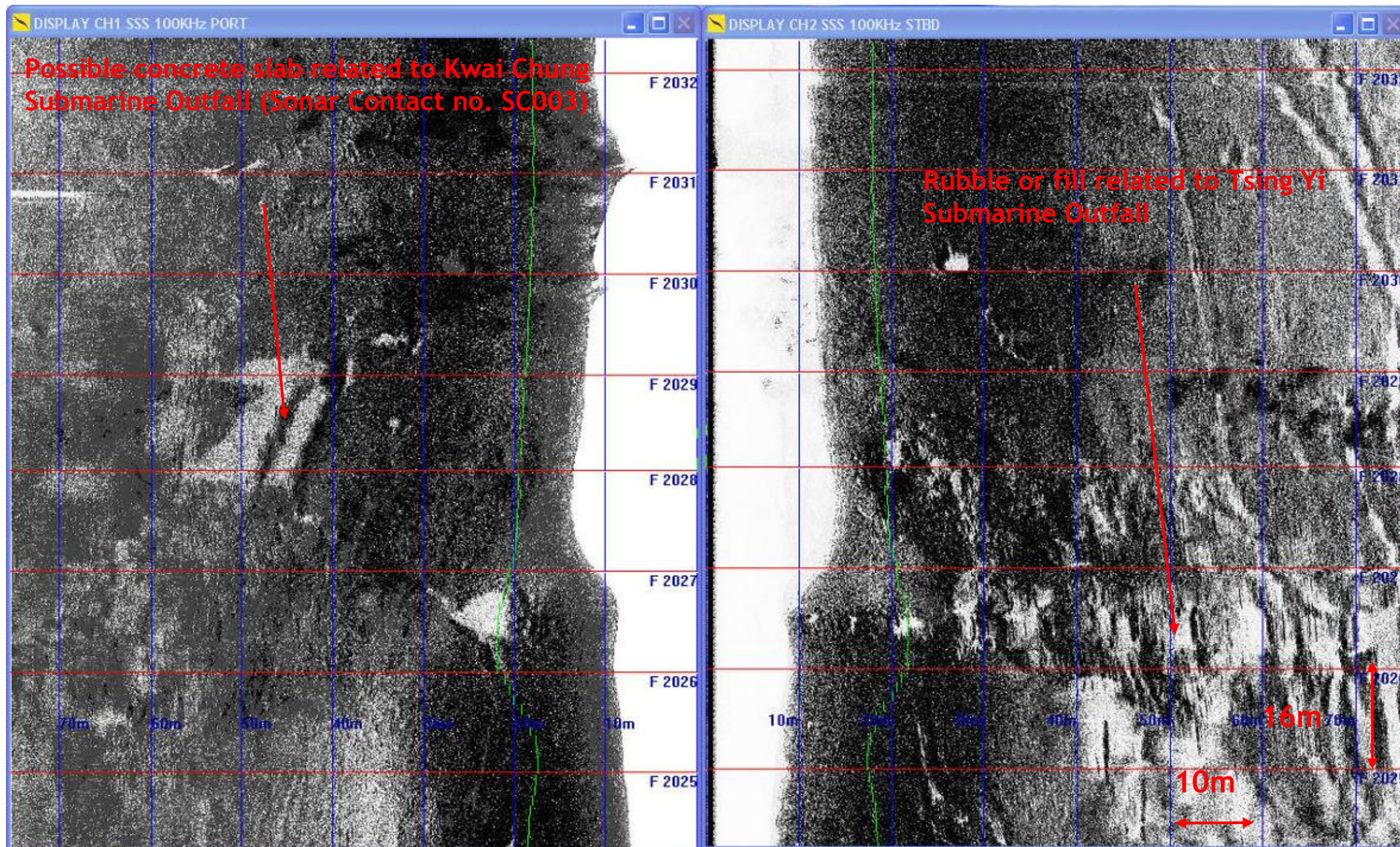



Figure 9.18: Side Scan Sonar Data showing construction debris associated with Kwai Chung Submarine Outfall and Tsing Yi Submarine Outfall



Rev	Date	Drawn	Description	Chk'd	App'd


 20/F Two Landmark East
 100 How Ming Street
 Kowloon, Kowloon
 Hong Kong
 T +852 2828 8787
 F +852 2827 1823
 W www.mottmac.com.hk

Client

 THE GOVERNMENT OF THE HONG KONG
 SPECIAL ADMINISTRATIVE REGION
 CIVIL ENGINEERING
 AND DEVELOPMENT DEPARTMENT

Project
 PROVIDING SUFFICIENT WATER DEPTH FOR
 KWAI TSING CONTAINER BASIN AND ITS
 APPROACH CHANNEL

Chapter 9 Figures

Designed		Eng check	
Drawn		Coordination	
Dwg check		Approved	
Scale	Status	Rev	

Drawing Number

© Mott MacDonald Hong Kong Limited
 This document should not be relied on or used in circumstances other than those for which it was originally prepared and for which Mott MacDonald Hong Kong Limited was commissioned. Mott MacDonald Limited accepts no responsibility for this document to any other party other than the person by whom it was commissioned.
 Map / image data reproduced with permission of the Director of Lands, the Government of Hong Kong SAR, Agreement No. 63 / 2008