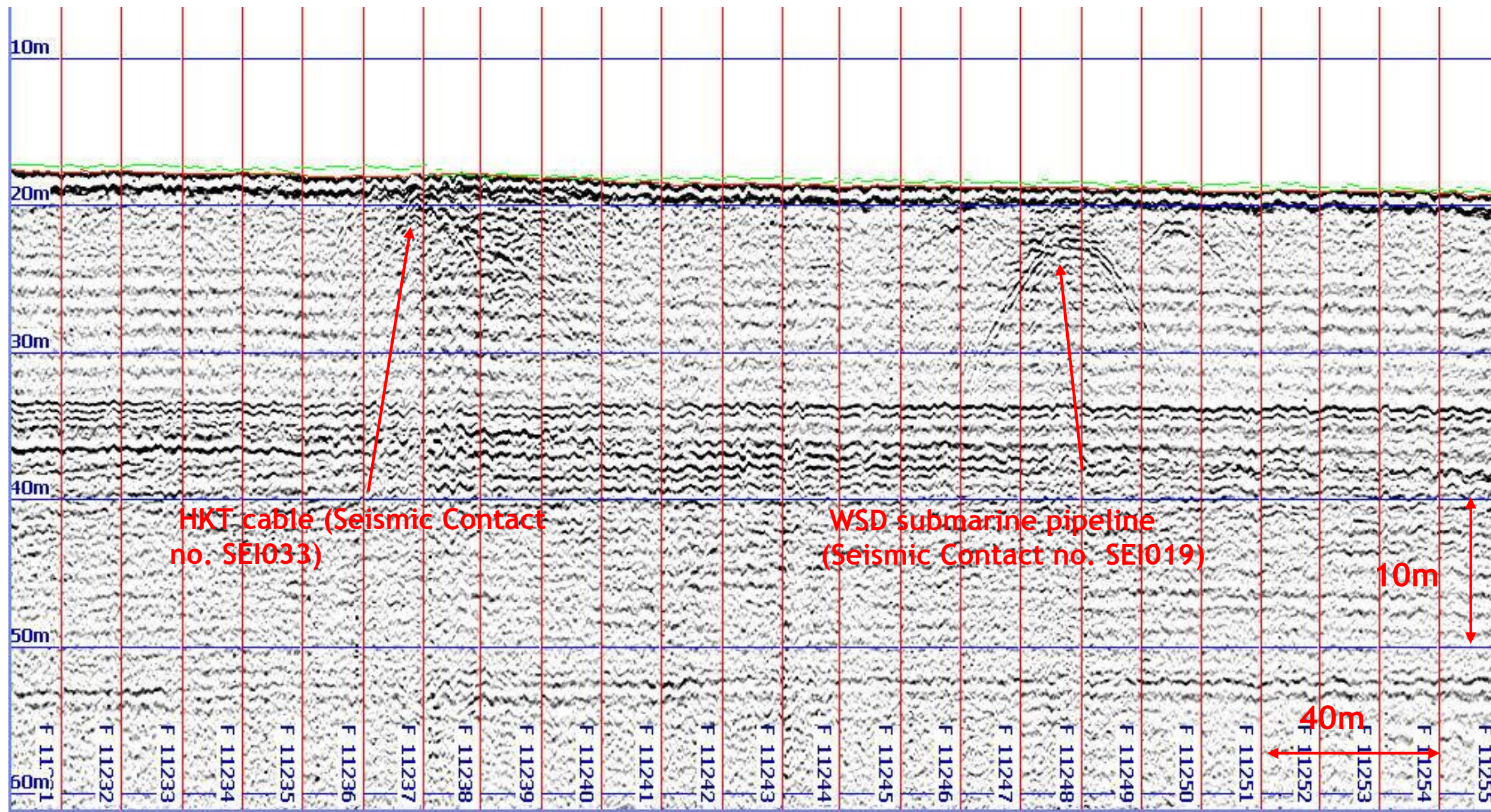



**Figure 9.20: Seismic Data showing acoustic hyperbola associated with HKT buried cable and WSD pipeline.**



Rev	Date	Drawn	Description	Chk'd	App'd



20/F Two Landmark East  
100 How Ming Street  
Kowloon, Kowloon  
Hong Kong  
T +852 2828 5757  
F +852 2827 1823  
www.mottmac.com.hk

Client  
 THE GOVERNMENT OF THE HONG KONG  
SPECIAL ADMINISTRATIVE REGION  
CIVIL ENGINEERING  
AND DEVELOPMENT DEPARTMENT

Project  
 PROVIDING SUFFICIENT WATER DEPTH FOR  
KWAI TSING CONTAINER BASIN AND ITS  
APPROACH CHANNEL

Title  
**Chapter 9 Figures**

Designed		Eng check	
Drawn		Coordination	
Dwg check		Approved	
Scale	Status	Rev	

Drawing Number