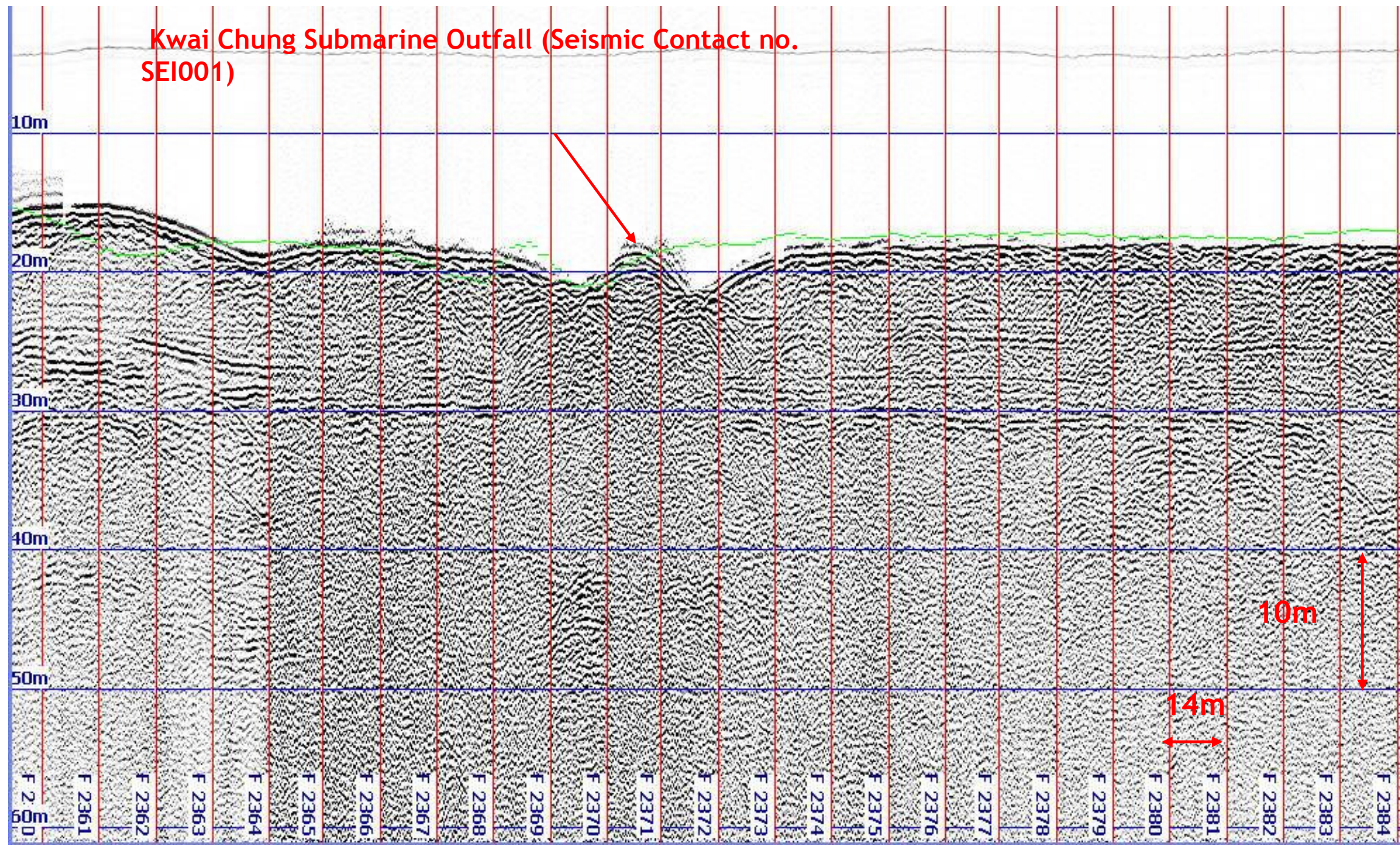



Figure 9.21: Seismic Data showing Kwai Chung Outfall



Rev	Date	Drawn	Description	Chk'd	App'd



20/F Two Landmark East  
100 How Ming Street  
Kowloon, Kowloon  
Hong Kong  
T +852 2828 5757  
F +852 2827 1823  
W www.mottmac.com.hk

Client  
 THE GOVERNMENT OF THE HONG KONG  
SPECIAL ADMINISTRATIVE REGION  
CIVIL ENGINEERING  
AND DEVELOPMENT DEPARTMENT

Project  
 PROVIDING SUFFICIENT WATER DEPTH FOR  
KWAI TSING CONTAINER BASIN AND ITS  
APPROACH CHANNEL

Title  
**Chapter 9 Figures**

Designed		Eng check	
Drawn		Coordination	
Dwg check		Approved	
Scale	Status	Rev	

Drawing Number

© Mott MacDonald Hong Kong Limited  
 This document should not be relied on or used in circumstances other than those for which it was originally prepared and for which Mott MacDonald Hong Kong Limited was commissioned. Mott MacDonald Limited accepts no responsibility for this document to any other party other than the person by whom it was commissioned.  
 Map / image data reproduced with permission of the Director of Lands, the Government of Hong Kong SAR, Agreement No. 63 / 2008