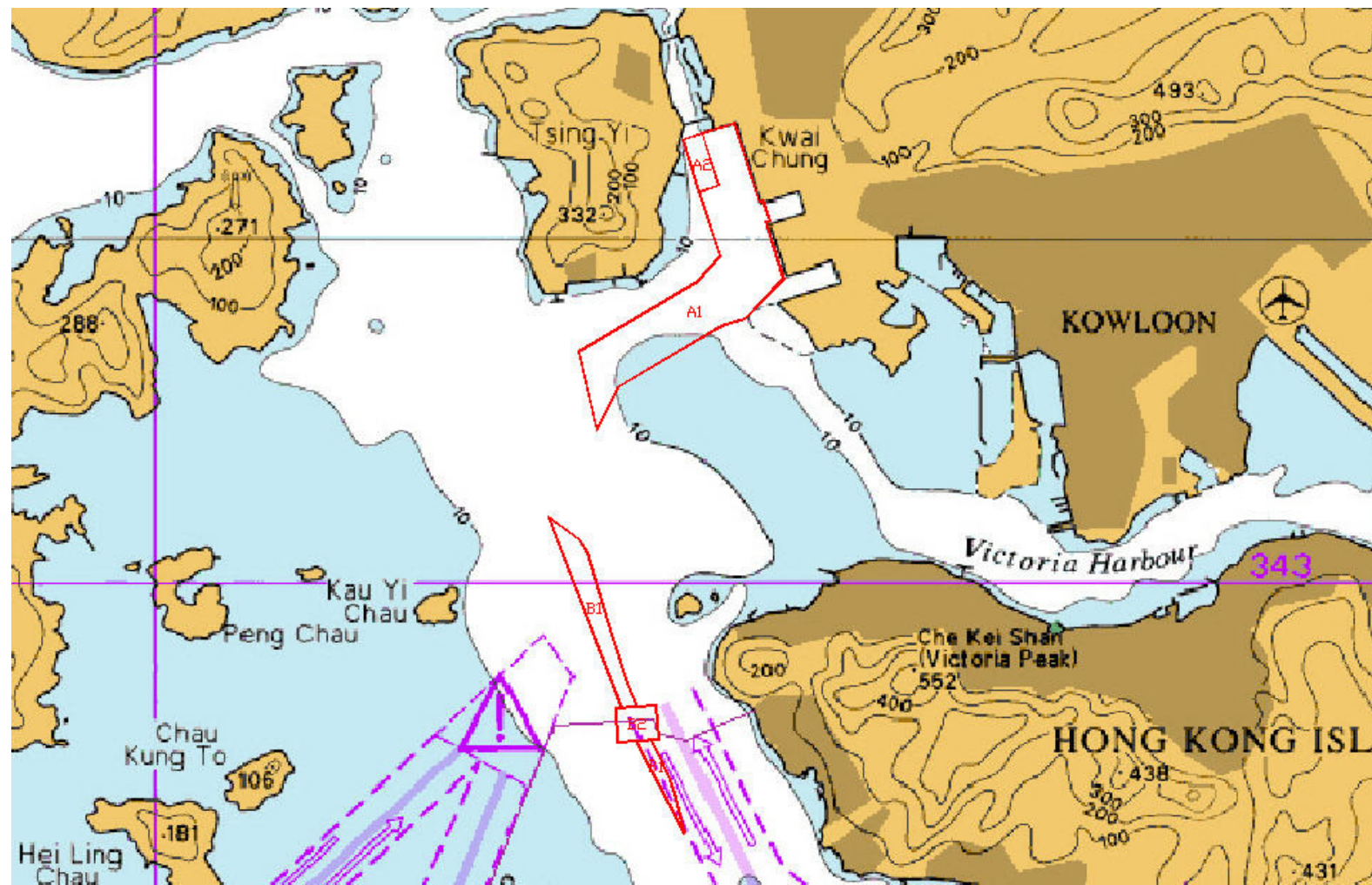
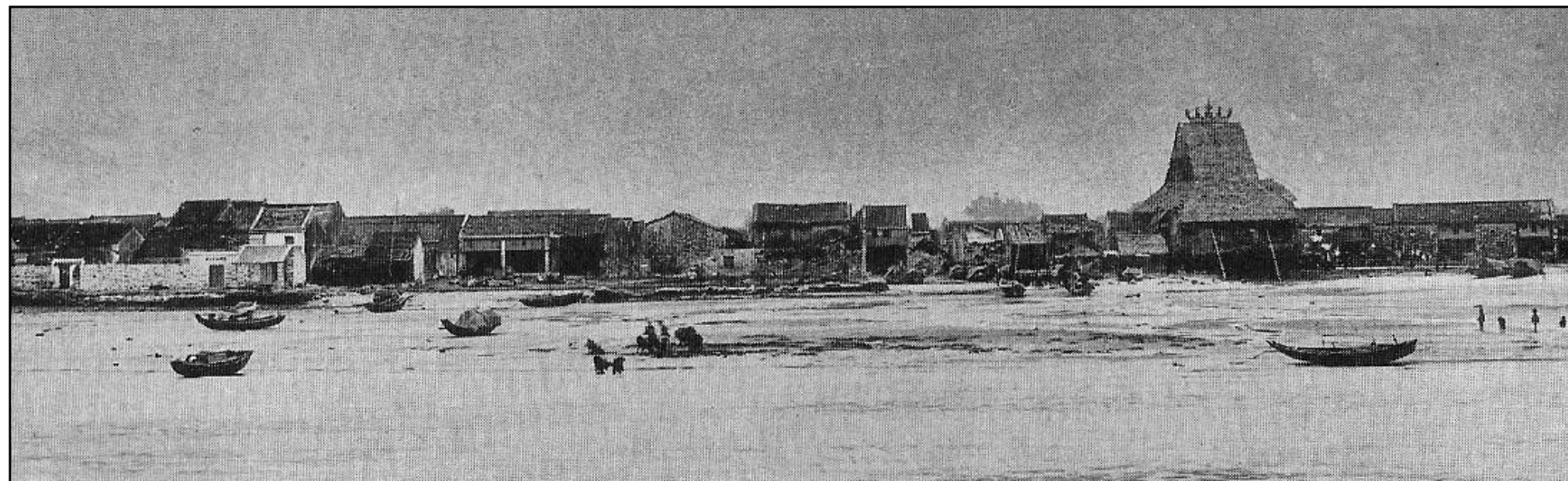


**Figure 9.3: Survey areas A & B.**



**Figure 9.4: Tsuen Wan around 1900. The waterfront at Hoi Pa also called the ‘embankment at the sea’ (Hayes, 1983).**



© Mott MacDonald Hong Kong Limited  
 This document should not be relied on or used in circumstances other than those for which it was originally prepared and for which Mott MacDonald Hong Kong Limited was commissioned. Mott MacDonald Limited accepts no responsibility for this document to any other party other than the person by whom it was commissioned.  
 Map / image data reproduced with permission of the Director of Lands, the Government of Hong Kong SAR, Agreement No. 63 / 2008

Rev	Date	Drawn	Description	Chk'd	App'd

**Mott MacDonald**  
 20/F Two Landmark East  
 100 How Ming Street  
 Kowloon, Kowloon  
 Hong Kong  
 T +852 2828 8757  
 F +852 2827 1823  
 W www.mottmac.com.hk

Client  
**CEDD** THE GOVERNMENT OF THE HONG KONG  
 SPECIAL ADMINISTRATIVE REGION  
 CIVIL ENGINEERING  
 AND DEVELOPMENT DEPARTMENT

Project  
 PROVIDING SUFFICIENT WATER DEPTH FOR  
 KWAI TSING CONTAINER BASIN AND ITS  
 APPROACH CHANNEL

## Chapter 9 Figures

Designed		Eng check	
Drawn		Coordination	
Dwg check		Approved	
Scale	Status	Rev	

Drawing Number