

Location of proposed viaduct alignment leading to Aberdeen Channel Bridge



Existing Condition

Vantage Point G - View west at an elevated level of the industrial building at Heung Yip Street looking towards the proposed viaduct leading to Aberdeen Channel Bridge

Viaduct with partially enclosed noise barrier designed and colourful curvy panel to disguise the engineered form of the viaduct



Day 1 of Operation Phase with landscape mitigation measures

Nullahside will be reinstated. New tree planting formed major landscape and mitigation measures.

Reinstatement of sloping area with woodland tree planting

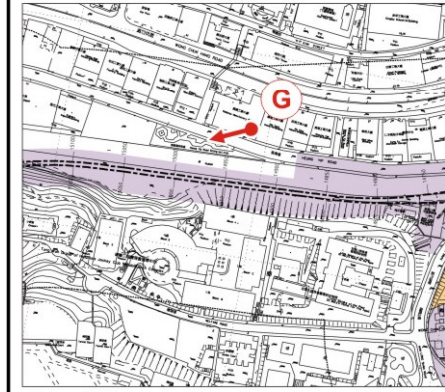
Proposed Viaduct



Day 1 of Operation Phase without landscape mitigation measures



Year 10 of Operation Phase with landscape mitigation measures fully established



Key Plan

(Represents VSRs including workers in Wong Chuk Hang Industrial Building (VSRO3) and Residents of community facilities to the east of Ap Lei Chau Bridge (VSRR6) having views looking towards proposed viaduct leading to proposed Aberdeen Channel Bridge)

Note:

1. Indicative design of built structure and landscape proposals provided by Detailed Design Consultants.
2. The final details will be subject to detailed design development.
3. The extent of noise barrier / enclosure is indicative only.

Rev	Date	Drawn/Description	Ch'kd/App'd
-----	------	-------------------	-------------

Client



Mott MacDonald Hong Kong Ltd
7th Floor
West Wing Office Building
New World Centre
20 Salisbury Road
Tsim Sha Tsui, Kowloon
Hong Kong
Tel: 2828 5757
Fax: 2827 1823
Web: www.mottmac.com.hk

Project

CONSULTANCY AGREEMENT NO. NEX/2301
SOUTH ISLAND LINE (EAST)
ENVIRONMENTAL IMPACT ASSESSMENT

Title

Photomontage - Vantage Points G

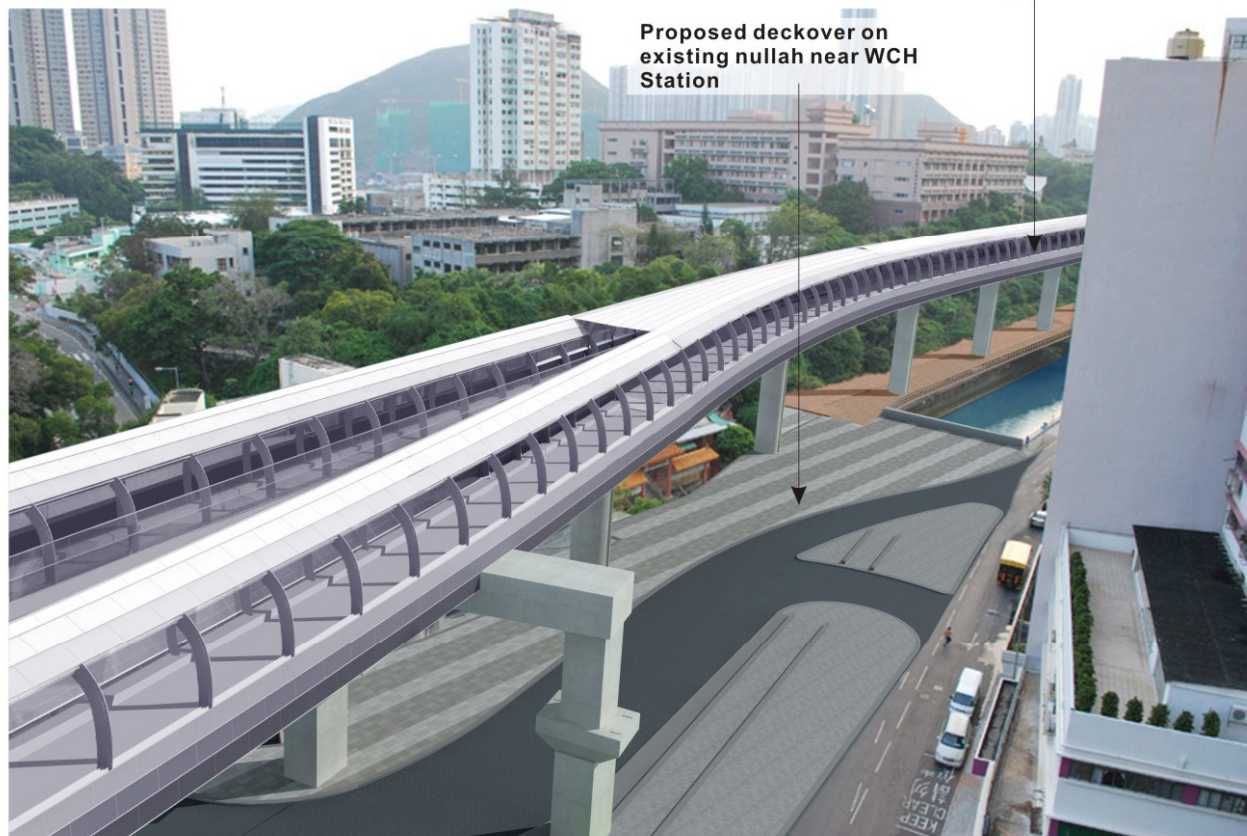
Designed	Eng.Chk.				
Drawn	SOP	05/10	Coordination		
Dwg.Chk.	ELK	05/10	Approved	CJF	05/10
Scale	N.T.S.	Project	Status		
		CAD File			
Drawing No.	Figure 6.10.12		Rev		



Existing Condition
Vantage Point H - View west at an elevated level of industrial building at Heung Yip Street looking towards the proposed viaduct from WCH Station



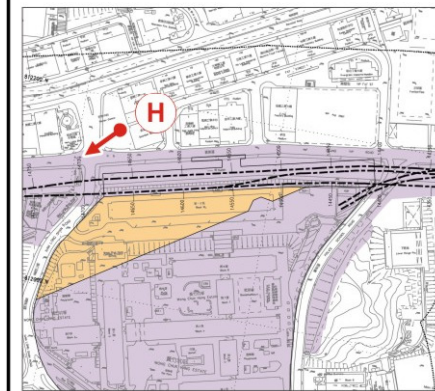
Day 1 of Operation Phase with landscape mitigation measures



Day 1 of Operation Phase without landscape mitigation measures



Year 10 of Operation Phase with landscape mitigation measures fully established



Key Plan

(Represents VSRs including workers in Wong Chuk Hang Industrial Building (VSRO3) and Travellers on Heung Yip Street and Ocean Park Road (VSRT3) having views looking towards the proposed elevated viaduct along the nullah)

Note:

1. Indicative design of built structure and landscape proposals provided by Detailed Design Consultants.
2. The final details will be subject to detailed design development.
3. The extent of noise barrier / enclosure is indicative only.

Rev	Date	Drawn/Description	Ch'kd/App'd
Client			



Mott MacDonald Hong Kong Ltd
7th Floor
West Wing Office Building
New World Centre
20 Salisbury Road
Tsim Sha Tsui, Kowloon
Hong Kong
Tel: 2828 5757
Fax: 2827 1825
Web: www.mottmac.com.hk

Project
CONSULTANCY AGREEMENT NO. NEX/2301
SOUTH ISLAND LINE (EAST)
ENVIRONMENTAL IMPACT ASSESSMENT

Title
Photomontage - Vantage Points H

Designed		Eng.Chk.		
Drawn	SOP	05/10	Coordination	
Dwg.Chk.	ELK	05/10	Approved	CJF 05/10
Scale	N.T.S.	Project	CAD File	Status
Drawing No.				Rev



Image showing the former Wong Chuk Hang Estate which has been demolished in 2009

Existing Condition
Vantage Point I - View east at elevated levels within the Rehabilitation Complex looking towards proposed viaduct from WCH Station



Viaduct with partially enclosed noise barrier designed with colourful panel to disguise the engineered form of the viaduct

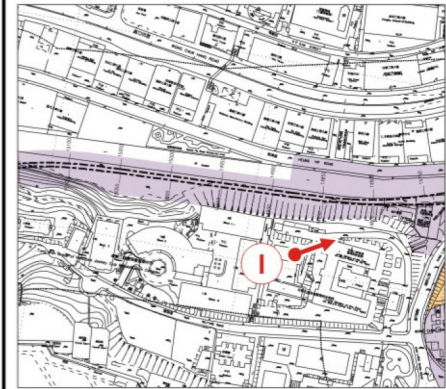
Day 1 of Operation Phase with landscape mitigation measures



Day 1 of Operation Phase without landscape mitigation measures



Year 10 of Operation Phase with landscape mitigation measures fully established



Key Plan

(Represents VSRs including workers in Wong Chuk Hang Industrial Building (VSRO3) and Residents of community facilities to the east of Ap Lei Chau Bridge (VSRR6) having views looking towards the proposed elevated viaduct leading from the WCH Station)

- Note:**
1. Indicative design of built structure and landscape proposals provided by Detailed Design Consultants.
 2. The final details will be subject to detailed design development.
 3. The extent of noise barrier / enclosure is indicative only.

Rev	Date	Drawn/Description	Ch'kd/App'd



Project
CONSULTANCY AGREEMENT NO. NEX/2301
SOUTH ISLAND LINE (EAST)
ENVIRONMENTAL IMPACT ASSESSMENT

Title
Photomontage - Vantage Points I

Designed		Eng.Chk.			
Drawn	SOP	06/10	Coordination		
Dwg.Chk.	ELK	06/10	Approved	CJF	06/10
Scale	N.T.S.	Project			Status
		CAD File			

Drawing No. **Figure 6.10.14** Rev



Existing Condition

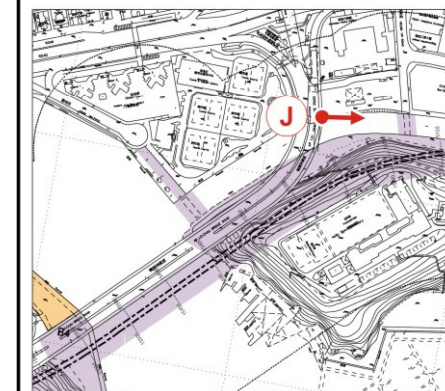
Vantage Point J – View east at elevated level of Ap Lei Chau Bridge Road looking towards the viaduct running above the nullah and with the backdrop of Holy Spirit Seminary



Day 1 of Operation Phase without landscape mitigation measures

© Mott MacDonald Hong Kong Limited

This document should not be relied on or used in circumstances other than those for which it was originally prepared and for which Mott MacDonald Hong Kong Limited was commissioned. Mott MacDonald Hong Kong Limited accepts no responsibility for this document to any other party other than the person by whom it was commissioned.



Key Plan

(Represents VSRs including workers in Wong Chuk Hang Industrial Building (VSRO3) and Residents of community facilities to the east of Ap Lei Chau Bridge (VSR6) having views looking towards proposed viaduct leading to proposed Aberdeen Channel Bridge)

Note:

1. Indicative design of built structure and landscape proposals provided by Detailed Design Consultants.
2. The final details will be subject to detailed design development.
3. The extent of noise barrier / enclosure is indicative only.

Rev	Date	Drawn/Description	Ch'kd/App'd
Client			



Mott MacDonald Hong Kong Ltd
7th Floor
West Wing Office Building
New World Centre
20 Salisbury Road
Tsim Sha Tsui, Kowloon
Hong Kong
Tel: 2828 5757
Fax: 2827 1823
Web: www.mottmac.com.hk

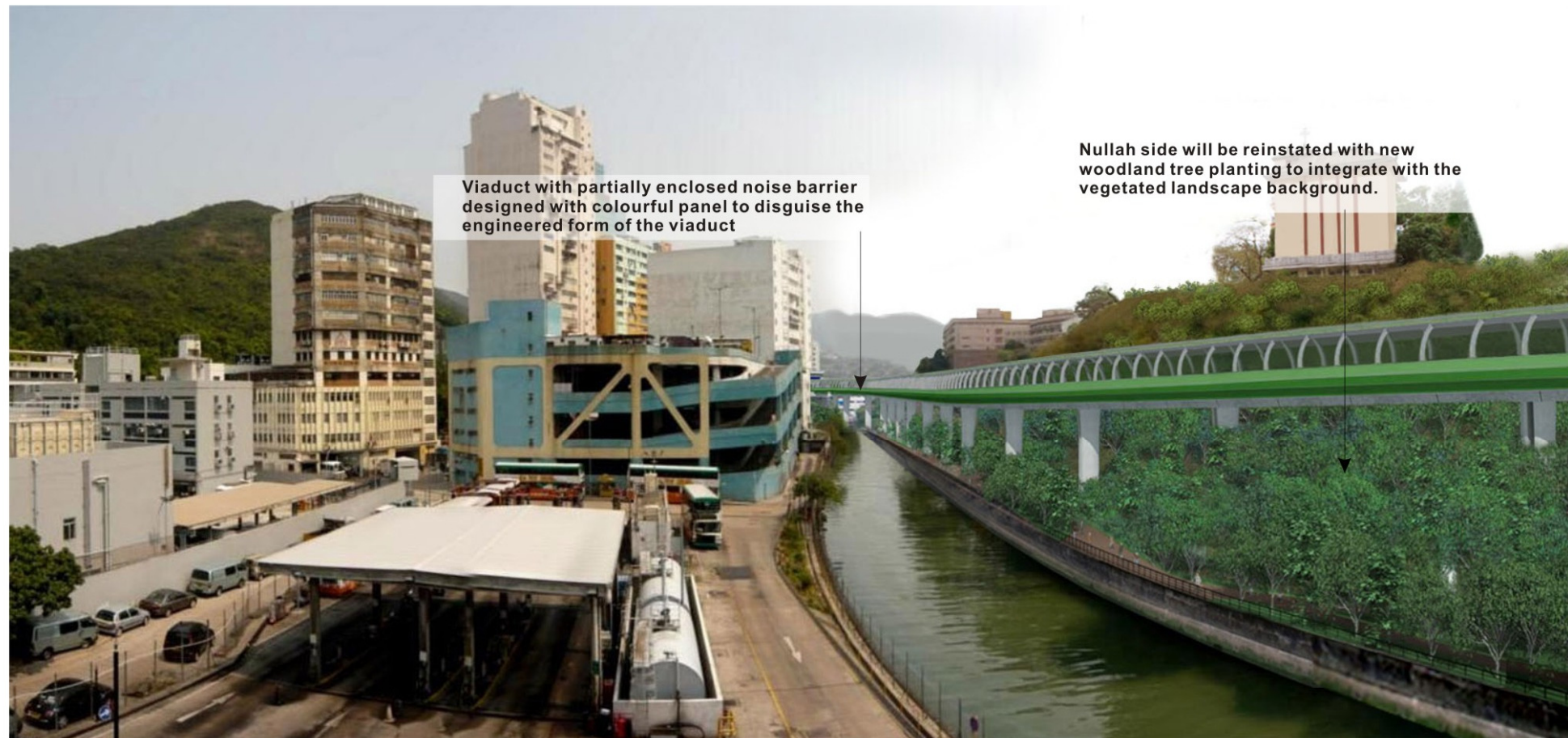
Project
CONSULTANCY AGREEMENT NO. NEX/2301
SOUTH ISLAND LINE (EAST)
ENVIRONMENTAL IMPACT ASSESSMENT

Title
Photomontage - Vantage Points J

Designed		Eng.Chk.		
Drawn	SOP	06/10	Coordination	
Dwg.Chk.	ELK	06/10	Approved	CJF 06/10
Scale	N.T.S.	Project	CAD File	Status
Drawing No.				Rev

© COPYRIGHT RESERVED

Figure 6.10.15



Viaduct with partially enclosed noise barrier designed with colourful panel to disguise the engineered form of the viaduct

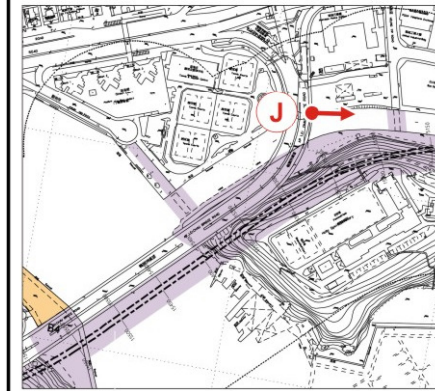
Nullah side will be reinstated with new woodland tree planting to integrate with the vegetated landscape background.

Day 1 of Operation Phase with landscape mitigation measures



Indicative Property Development above station (For illustrative purpose only, subject to change / agreement and not for approval under EIAO)

Year 10 of Operation Phase with landscape mitigation measures fully established





Key Plan

(Represents VSRs including workers in Wong Chuk Hang Industrial Building (VSRO3) and Residents of community facilities to the east of Ap Lei Chau Bridge (VSR6) having views looking towards proposed viaduct leading to proposed Aberdeen Channel Bridge)

Note:

1. Indicative design of built structure and landscape proposals provided by Detailed Design Consultants.
2. The final details will be subject to detailed design development.
3. The extent of noise barrier / enclosure is indicative only.

Rev	Date	Drawn	Description	Ch'kd	App'd
Client					
					
					
<small>Mott MacDonald Hong Kong Ltd 7th Floor West Wing Office Building New World Centre 20 Salisbury Road Tsim Sha Tsui, Kowloon Hong Kong Tel: 2828 5757 Fax: 2827 1823 Web: www.mottmac.com.hk</small>					
Project					
CONSULTANCY AGREEMENT NO. NEX/2301 SOUTH ISLAND LINE (EAST) ENVIRONMENTAL IMPACT ASSESSMENT					
Title					
Photomontage - Vantage Points J					
Designed			Eng.Chk.		
Drawn	SOP	06/10	Coordination		
Dwg.Chk.	ELK	06/10	Approved	CJF	06/10
Scale	N.T.S.		Project		Status
			CAD File		
Drawing No.					Rev
	Figure 6.10.16				