

- ### Legend
- Proposed SIL(E) Alignment
  - 100M Study Boundary for Landscape Impact Assessment
  - ADM Proposed SIL(E) Station
  - Proposed Works Site (Ground Level and Underground)
  - Proposed Works Site (Underground)
  - Proposed Works Area (Ground Level)
  - LR3.1 Landscape Resources Sub-group
  - LR1 Major Road and Highway
  - LR2 Developed Area
  - LR3 Natural Woodland
  - LR4 Mixed Woodland
  - LR5 Roadside Amenity
  - LR6 Grassland/Shrubland Mosaic
  - LR7 Waterbody
  - LR8 Modified Watercourse
  - LR9 Marshland
  - LR10 Waste Land / Open Field
  - LR11 Agricultural Land
  - LR12 Open Space

Rev	Date	Drawn/Description	Cr'd/App'd

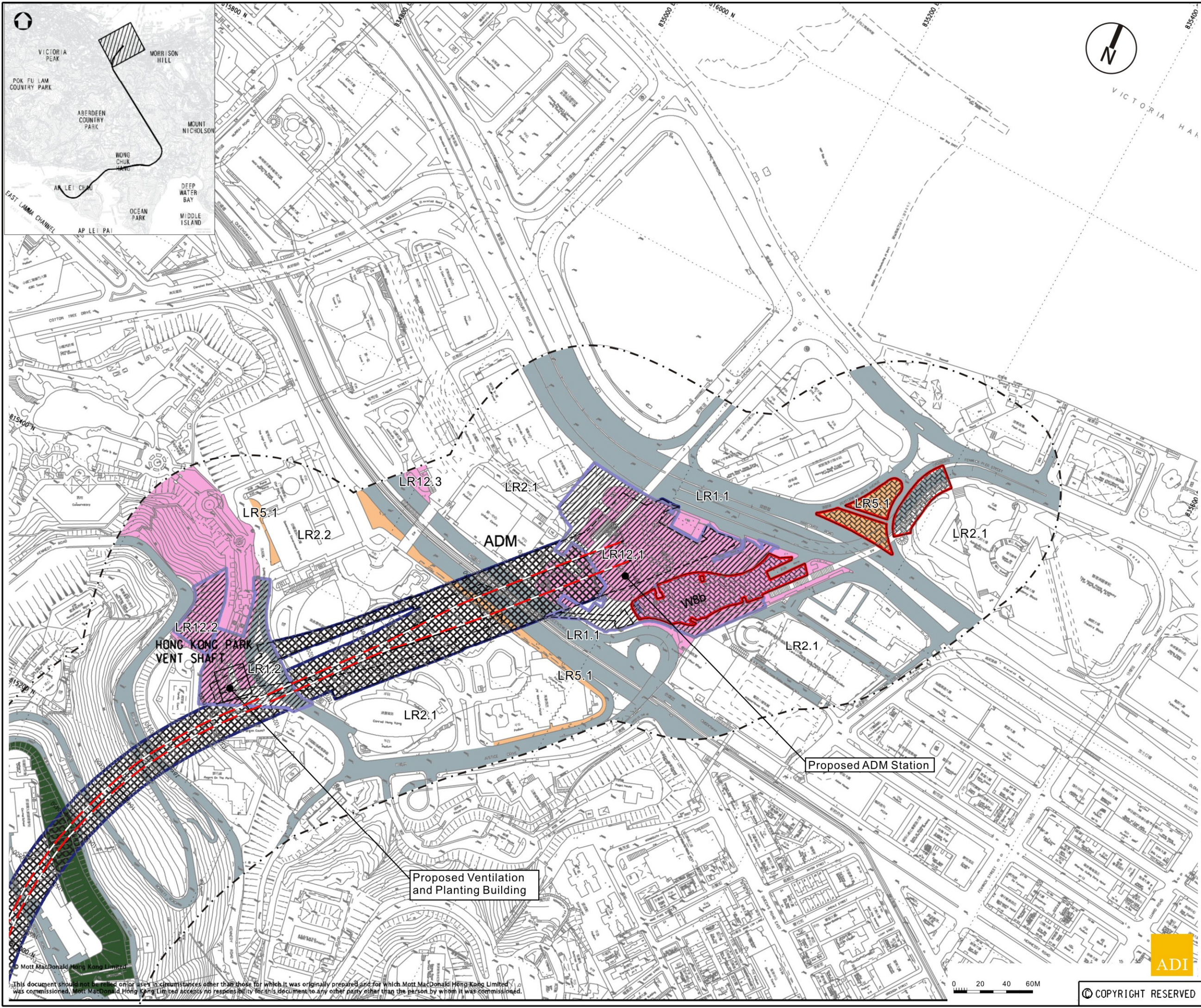


Project  
**CONSULTANCY AGREEMENT NO. NEX/2301**  
**SOUTH ISLAND LINE (EAST)**  
**ENVIRONMENTAL IMPACT ASSESSMENT**

Title  
**Landscape Resources**  
 Sheet 1 of 13

Designed	Eng.Chk.	Coordination	Approved	Status
Drawn: EIK	06/10	Coordination	CJF	06/10
Dwg.Chk: ELK	06/10	Approved	CJF	06/10
Scale: As Shown	Project: CAD File			
Drawing No.:	Figure 6.2.1			Rev:

© Mott MacDonald Hong Kong Limited  
 This document should not be relied on or used in circumstances other than those for which it was originally prepared and for which Mott MacDonald Hong Kong Limited was commissioned. Mott MacDonald Hong Kong Limited accepts no responsibility for this document to any other party other than the person by whom it was commissioned.



### Legend

- Proposed SIL(E) Alignment
- 100M Study Boundary for Landscape Impact Assessment
- Proposed SIL(E) Station
- Proposed Works Site (Ground Level and Underground)
- Proposed Works Site (Underground)
- Proposed Works Area (Ground Level)
- LR3.1** Landscape Resources Sub-group
  - LR1 Major Road and Highway
  - LR2 Developed Area
  - LR3 Natural Woodland
  - LR4 Mixed Woodland
  - LR5 Roadside Amenity
  - LR6 Grassland/Shrubland Mosaic
  - LR7 Waterbody
  - LR8 Modified Watercourse
  - LR9 Marshland
  - LR10 Waste Land / Open Field
  - LR11 Agricultural Land
  - LR12 Open Space

Rev	Date	Drawn/Description	Chk'd/App'd

Client

Mott MacDonald

Mott MacDonald Hong Kong Ltd  
 7th Floor  
 West Wing Office Building  
 New World Centre  
 20 Salisbury Road  
 Tsim Sha Tsui, Kowloon  
 Hong Kong  
 Tel: 2828 5757  
 Fax: 2827 1823  
 Web: www.mottmac.com.hk

Project

**CONSULTANCY AGREEMENT NO. NEX/2301  
 SOUTH ISLAND LINE (EAST)  
 ENVIRONMENTAL IMPACT ASSESSMENT**

Title

**Landscape Resources  
 Sheet 2 of 13**

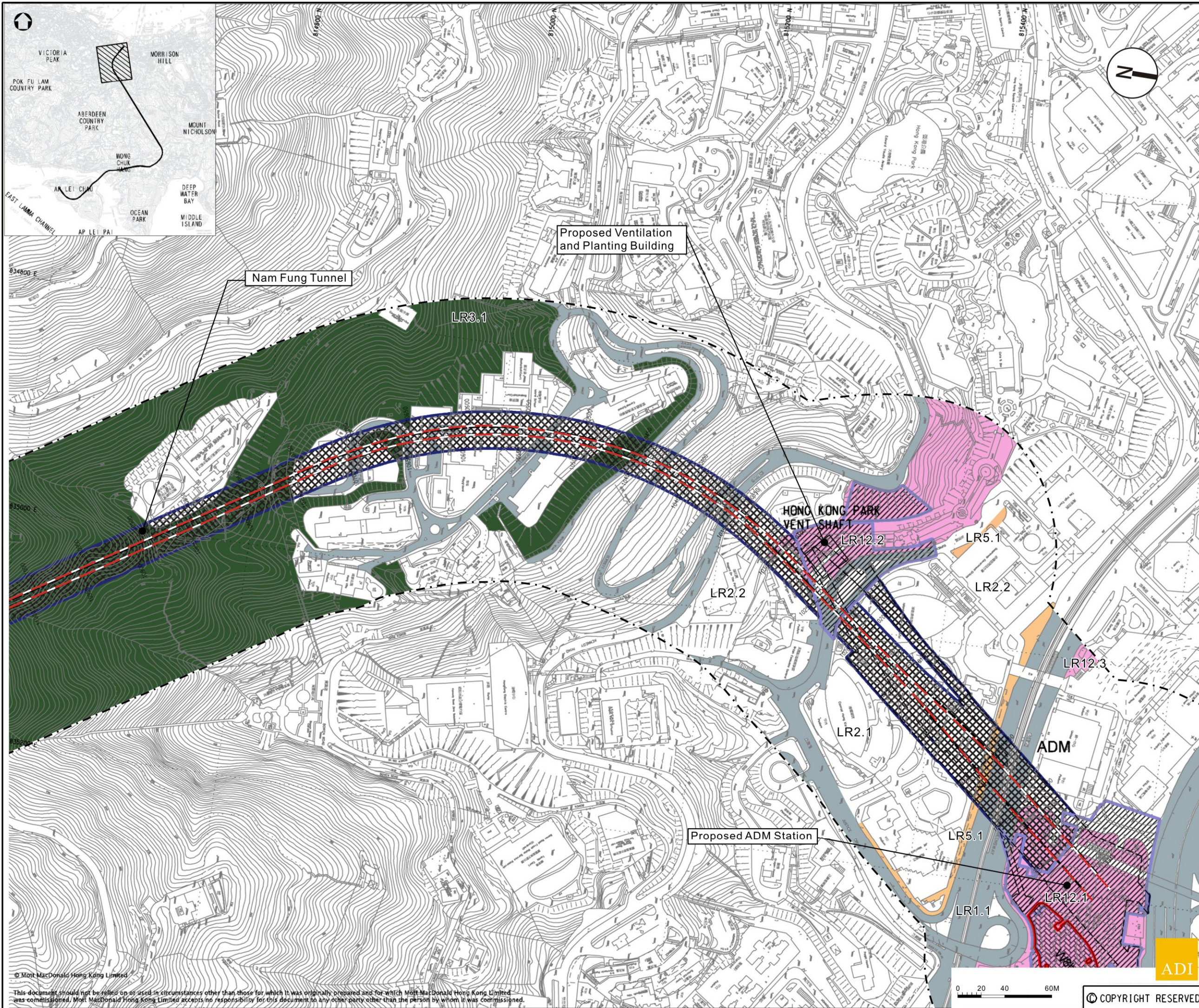
Designed	Eng.Chk.	Coordination	Approved	CJF	06/10
Drawn	EIK	06/10	Approved	CJF	06/10
Dwg.Chk.	ELK	06/10	Approved	CJF	06/10
Scale	As Shown	Project	CAD File		Status
Drawing No.					Rev

This document should not be relied on or used in circumstances other than those for which it was originally prepared and for which Mott MacDonald Hong Kong Limited was commissioned. Mott MacDonald Hong Kong Limited accepts no responsibility for this document to any other party other than the person by whom it was commissioned.



© COPYRIGHT RESERVED

Figure 6.2.2



- ### Legend
- Proposed SIL(E) Alignment
  - 100M Study Boundary for Landscape Impact Assessment
  - Proposed SIL(E) Station
  - Proposed Works Site (Ground Level and Underground)
  - Proposed Works Site (Underground)
  - Proposed Works Area (Ground Level)
  - LR3.1** Landscape Resources Sub-group
    - LR1 Major Road and Highway
    - LR2 Developed Area
    - LR3 Natural Woodland
    - LR4 Mixed Woodland
    - LR5 Roadside Amenity
    - LR6 Grassland/Shrubland Mosaic
    - LR7 Waterbody
    - LR8 Modified Watercourse
    - LR9 Marshland
    - LR10 Waste Land / Open Field
    - LR11 Agricultural Land
    - LR12 Open Space

Rev	Date	Drawn/Description	Chk'd/App'd



Project  
**CONSULTANCY AGREEMENT NO. NEX/2301  
SOUTH ISLAND LINE (EAST)  
ENVIRONMENTAL IMPACT ASSESSMENT**

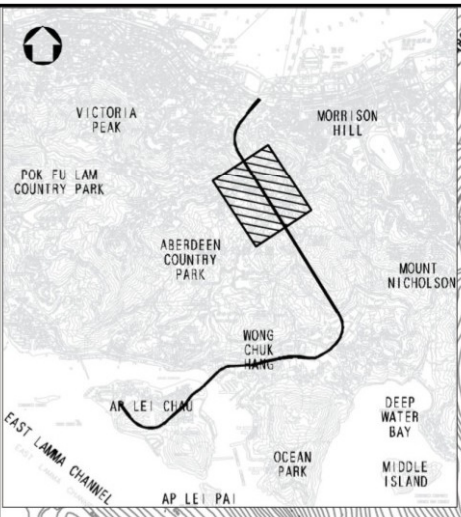
Title  
**Landscape Resources  
Sheet 3 of 13**

Designed	Eng.Chk.			
Drawn	EIK	06/10	Coordination	
Dwg.Chk.	ELK	06/10	Approved	CJF 06/10
Scale	As Shown	Project	CAD File	Status
Drawing No.				Rev

© Mott MacDonald Hong Kong Limited  
This document should not be relied on or used in circumstances other than those for which it was originally prepared and for which Mott MacDonald Hong Kong Limited was commissioned. Mott MacDonald Hong Kong Limited accepts no responsibility for this document to any other party other than the person by whom it was commissioned.

ADJ  
COPYRIGHT RESERVED

Figure 6.2.3



- ### Legend
- Proposed SIL(E) Alignment
  - 100M Study Boundary for Landscape Impact Assessment
  - Proposed SIL(E) Station
  - Proposed Works Site (Ground Level and Underground)
  - Proposed Works Site (Underground)
  - Proposed Works Area (Ground Level)
  - LR3.1** Landscape Resources Sub-group
    - LR1 Major Road and Highway
    - LR2 Developed Area
    - LR3 Natural Woodland
    - LR4 Mixed Woodland
    - LR5 Roadside Amenity
    - LR6 Grassland/Shrubland Mosaic
    - LR7 Waterbody
    - LR8 Modified Watercourse
    - LR9 Marshland
    - LR10 Waste Land / Open Field
    - LR11 Agricultural Land
    - LR12 Open Space

Rev	Date	Drawn/Description	Ch'kd/App'd



Project  
**CONSULTANCY AGREEMENT NO. NEX/2301  
SOUTH ISLAND LINE (EAST)  
ENVIRONMENTAL IMPACT ASSESSMENT**

Title  
**Landscape Resources  
Sheet 4 of 13**

Designed	Eng.Chk.		
Drawn	EIK	06/10	Coordination
Dwg.Chk.	ELK	06/10	Approved C/JF 06/10
Scale	As Shown	Project	Status
		CAD File	
Drawing No.	Figure 6.2.4		Rev

© Mott MacDonald Hong Kong Limited  
This document should not be relied on or used in circumstances other than those for which it was originally prepared and for which Mott MacDonald Hong Kong Limited was commissioned. Mott MacDonald Hong Kong Limited accepts no responsibility for this document to any other party other than the person by whom it was commissioned.



### Legend

- Proposed SIL(E) Alignment
- 100M Study Boundary for Landscape Impact Assessment
- Proposed SIL(E) Station
- Proposed Works Site (Ground Level and Underground)
- Proposed Works Site (Underground)
- Proposed Works Area (Ground Level)
- LR3.1** Landscape Resources Sub-group
  - LR1 Major Road and Highway
  - LR2 Developed Area
  - LR3 Natural Woodland
  - LR4 Mixed Woodland
  - LR5 Roadside Amenity
  - LR6 Grassland/Shrubland Mosaic
  - LR7 Waterbody
  - LR8 Modified Watercourse
  - LR9 Marshland
  - LR10 Waste Land / Open Field
  - LR11 Agricultural Land
  - LR12 Open Space

Rev	Date	Drawn/Description	Ch'kd/App'd
Client			



Mott MacDonald Hong Kong Ltd  
 7th Floor  
 West Wing Office Building  
 New World Centre  
 20 Salisbury Road  
 Tsim Sha Tsui, Kowloon  
 Hong Kong  
 Tel: 2828 5757  
 Fax: 2827 1823  
 Web: www.mottmac.com.hk

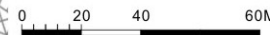
Project  
**CONSULTANCY AGREEMENT NO. NEX/2301**  
**SOUTH ISLAND LINE (EAST)**  
**ENVIRONMENTAL IMPACT ASSESSMENT**

Title  
**Landscape Resources**  
**Sheet 5 of 13**

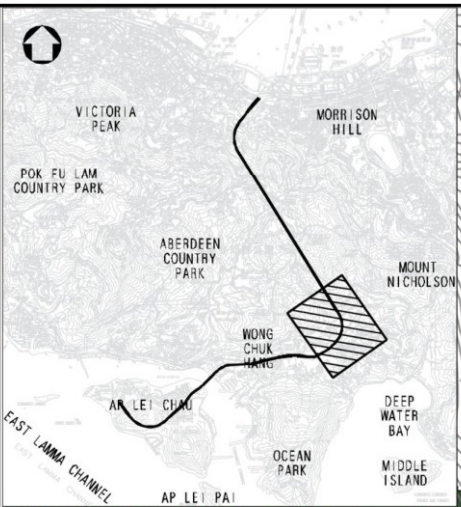
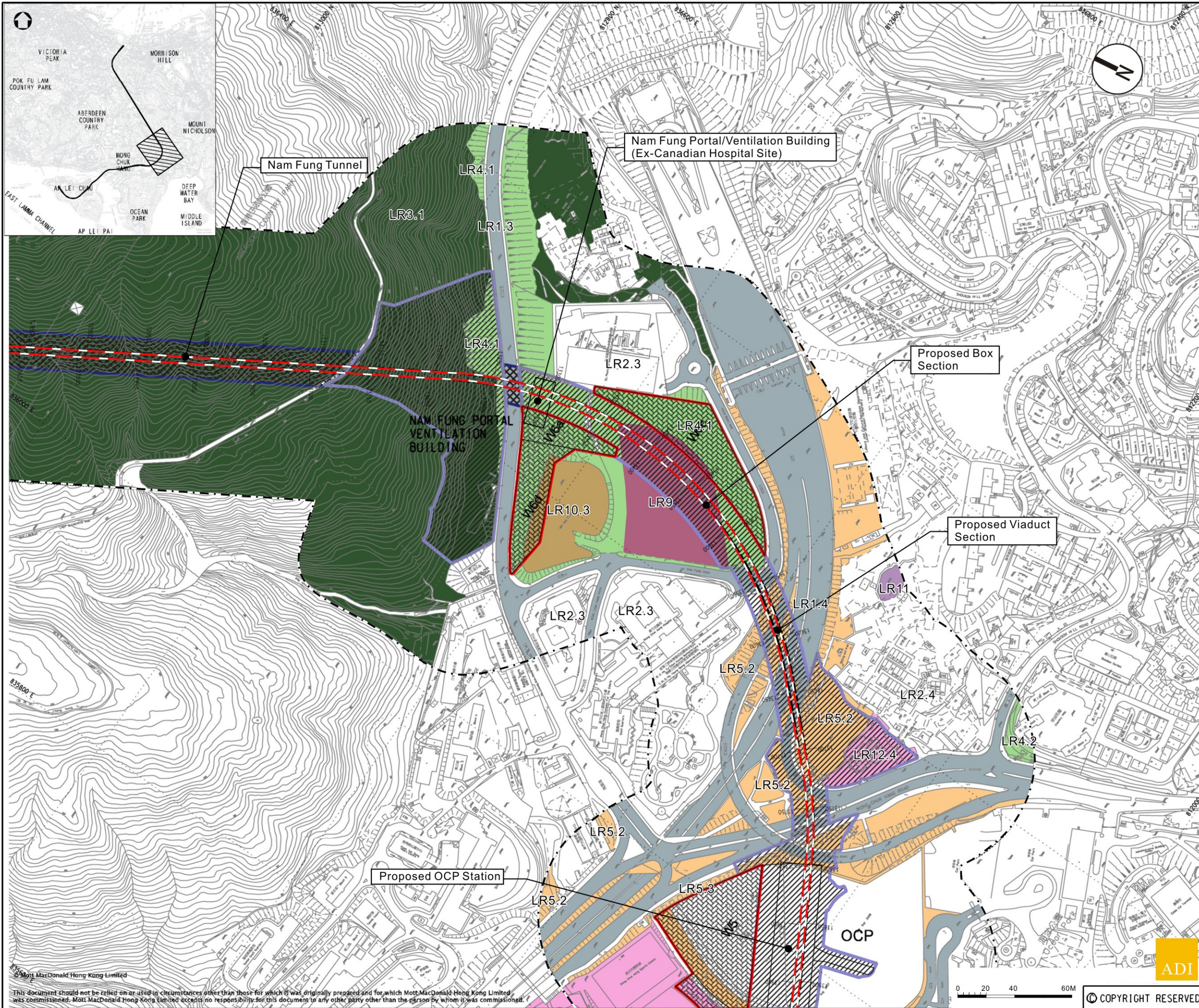
Designed	Eng.Chk.		
Drawn: EIK	06/10	Coordination	
Dwg.Chk: ELK	06/10	Approved	CJF 06/10
Scale: As Shown	Project: CAD File	Status	
Drawing No.	Figure 6.2.5		Rev

© Mott MacDonald Hong Kong Limited

This document should not be relied on or used in circumstances other than those for which it was originally prepared and for which Mott MacDonald Hong Kong Limited was commissioned. Mott MacDonald Hong Kong Limited accepts no responsibility for this document to any other party other than the person by whom it was commissioned.



**COPYRIGHT RESERVED**



- ### Legend
- Proposed SIL(E) Alignment
  - 100M Study Boundary for Landscape Impact Assessment
  - Proposed SIL(E) Station
  - Proposed Works Site (Ground Level and Underground)
  - Proposed Works Site (Underground)
  - Proposed Works Area (Ground Level)
  - LR3.1** Landscape Resources Sub-group
    - LR1 Major Road and Highway
    - LR2 Developed Area
    - LR3 Natural Woodland
    - LR4 Mixed Woodland
    - LR5 Roadside Amenity
    - LR6 Grassland/Shrubland Mosaic
    - LR7 Waterbody
    - LR8 Modified Watercourse
    - LR9 Marshland
    - LR10 Waste Land / Open Field
    - LR11 Agricultural Land
    - LR12 Open Space

Rev	Date	Drawn/Description	Ch'kd/App'd

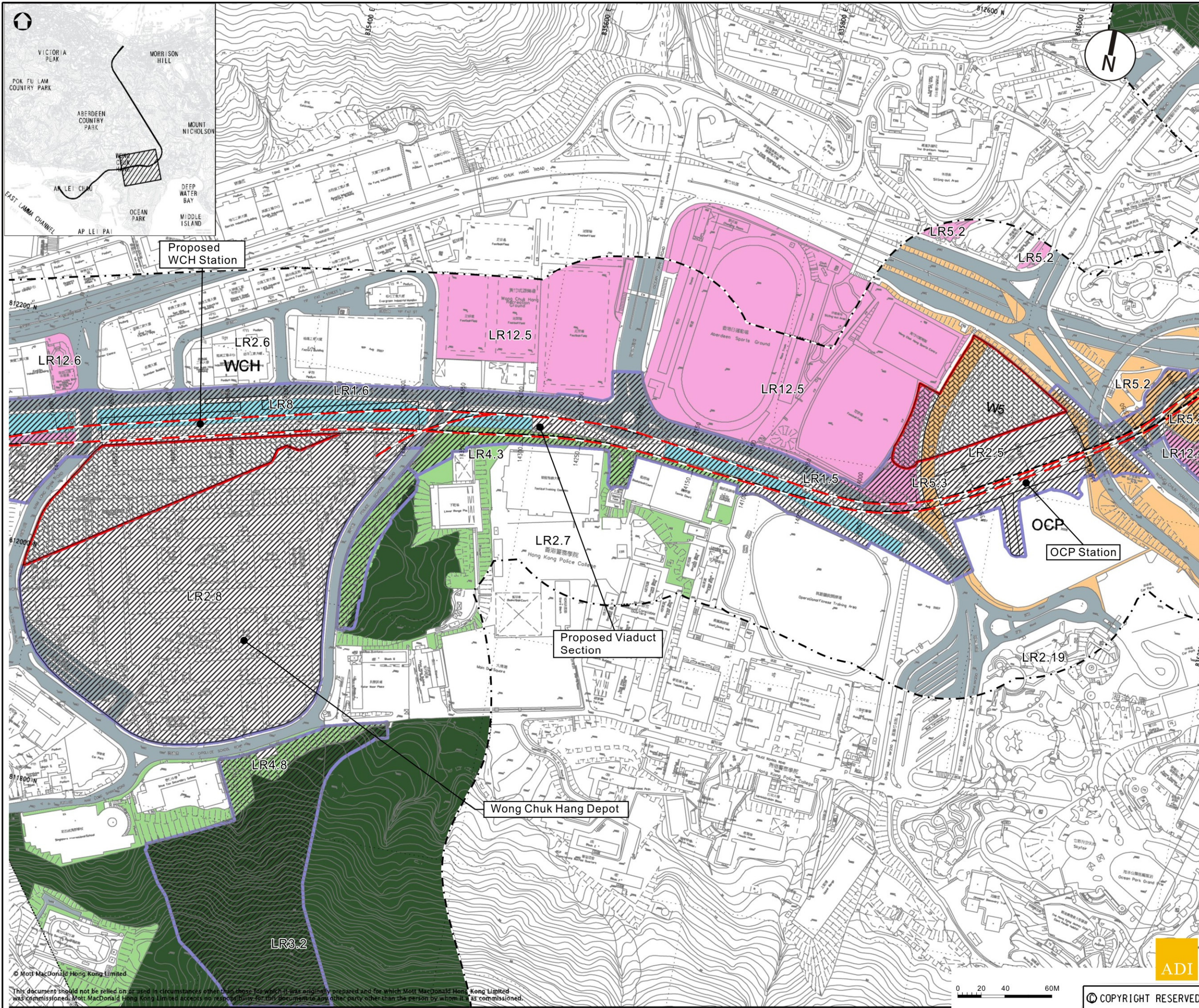


Project  
**CONSULTANCY AGREEMENT NO. NEX/2301**  
**SOUTH ISLAND LINE (EAST)**  
**ENVIRONMENTAL IMPACT ASSESSMENT**

Title  
**Landscape Resources**  
**Sheet 6 of 13**

Designed	Eng.Chk.	Coordination	Approved	Status
Drawn: EIK	06/10	06/10	CJF	06/10
Dwg.Chk: ELK	06/10	Approved	CJF	06/10
Scale: As Shown	Project: CAD File			
Drawing No.:	Figure 6.2.6			

© Mott MacDonald Hong Kong Limited  
 This document should not be relied on or used in circumstances other than those for which it was originally prepared and for which Mott MacDonald Hong Kong Limited was commissioned. Mott MacDonald Hong Kong Limited accepts no responsibility for this document to any other party other than the person by whom it was commissioned.



- ### Legend
- Proposed SIL(E) Alignment
  - 100M Study Boundary for Landscape Impact Assessment
  - Proposed SIL(E) Station
  - Proposed Works Site (Ground Level and Underground)
  - Proposed Works Site (Underground)
  - Proposed Works Area (Ground Level)
  - LR3.1** Landscape Resources Sub-group
    - LR1 Major Road and Highway
    - LR2 Developed Area
    - LR3 Natural Woodland
    - LR4 Mixed Woodland
    - LR5 Roadside Amenity
    - LR6 Grassland/Shrubland Mosaic
    - LR7 Waterbody
    - LR8 Modified Watercourse
    - LR9 Marshland
    - LR10 Waste Land / Open Field
    - LR11 Agricultural Land
    - LR12 Open Space

Rev	Date	Drawn/Description	Chk'd/App'd

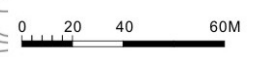


Project  
**CONSULTANCY AGREEMENT NO. NEX/2301**  
**SOUTH ISLAND LINE (EAST)**  
**ENVIRONMENTAL IMPACT ASSESSMENT**

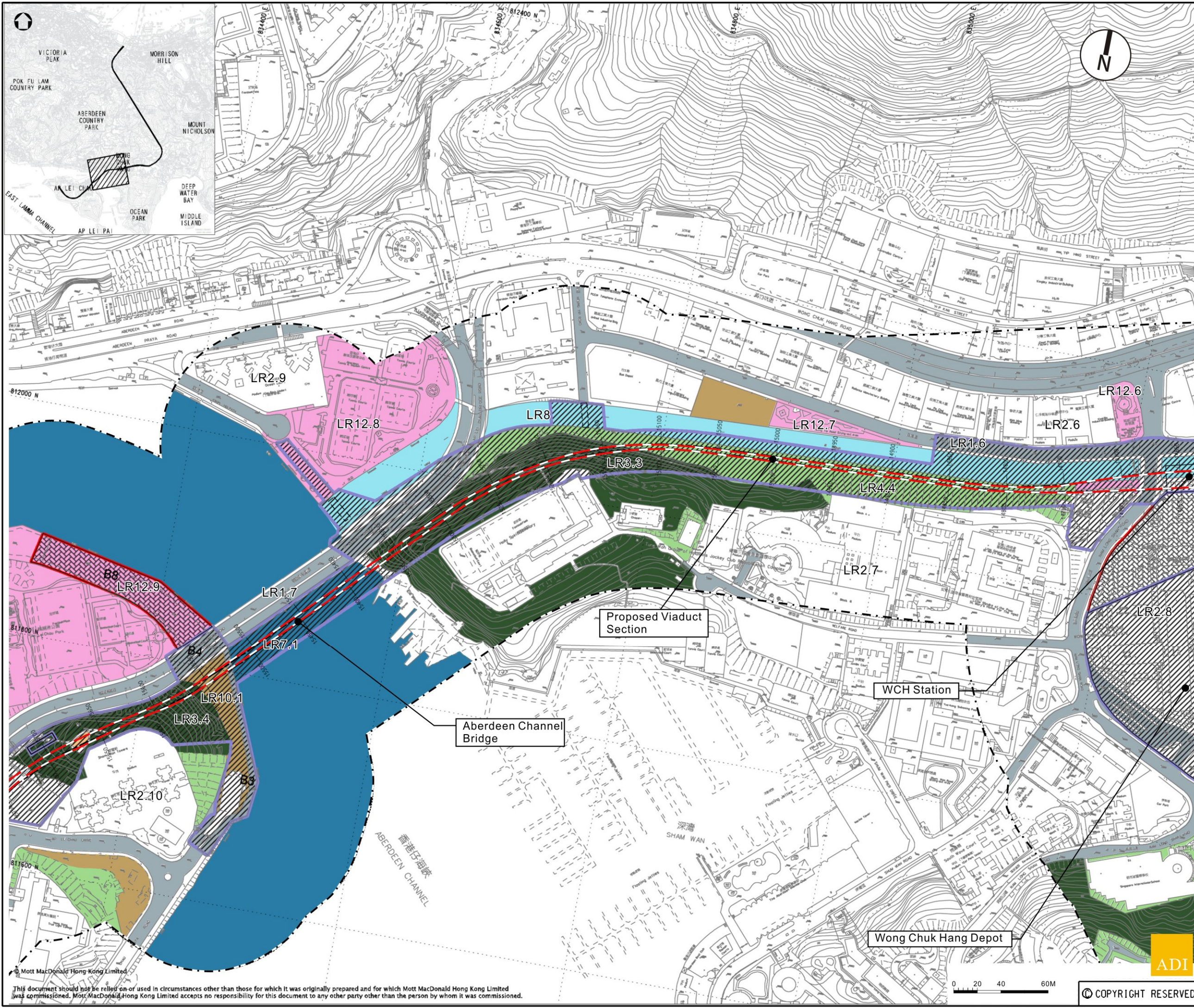
Title  
**Landscape Resources**  
**Sheet 7 of 13**

Designed	Eng.Chk.	Coordination	Approved	Status
Drawn EIK 06/10				
Dwg.Chk. ELK 06/10			CJF 06/10	
Scale As Shown	Project CAD File			
Drawing No.	Figure 6.2.7			

© Mott MacDonald Hong Kong Limited  
This document should not be relied on or used in circumstances other than those for which it was originally prepared and for which Mott MacDonald Hong Kong Limited was commissioned. Mott MacDonald Hong Kong Limited accepts no responsibility for this document to any other party other than the person by whom it was commissioned.



© COPYRIGHT RESERVED



- ### Legend
- Proposed SIL(E) Alignment
  - 100M Study Boundary for Landscape Impact Assessment
  - Proposed SIL(E) Station
  - Proposed Works Site (Ground Level and Underground)
  - Proposed Works Site (Underground)
  - Proposed Works Area (Ground Level)
- ### LR3.1 Landscape Resources Sub-group
- LR1 Major Road and Highway
  - LR2 Developed Area
  - LR3 Natural Woodland
  - LR4 Mixed Woodland
  - LR5 Roadside Amenity
  - LR6 Grassland/Shrubland Mosaic
  - LR7 Waterbody
  - LR8 Modified Watercourse
  - LR9 Marshland
  - LR10 Waste Land / Open Field
  - LR11 Agricultural Land
  - LR12 Open Space

Rev	Date	Drawn/Description	Cr'd/App'd



Project  
**CONSULTANCY AGREEMENT NO. NEX/2301**  
**SOUTH ISLAND LINE (EAST)**  
**ENVIRONMENTAL IMPACT ASSESSMENT**

Title  
**Landscape Resources**  
**Sheet 8 of 13**

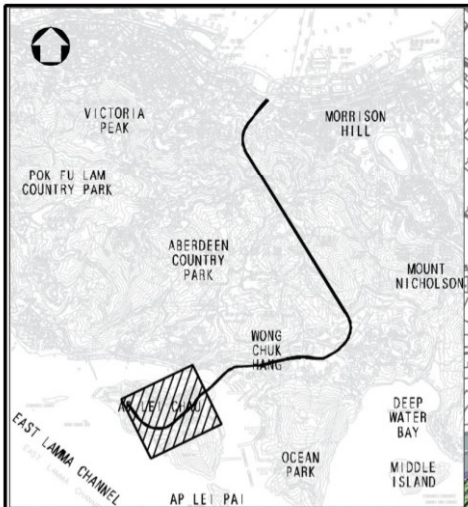
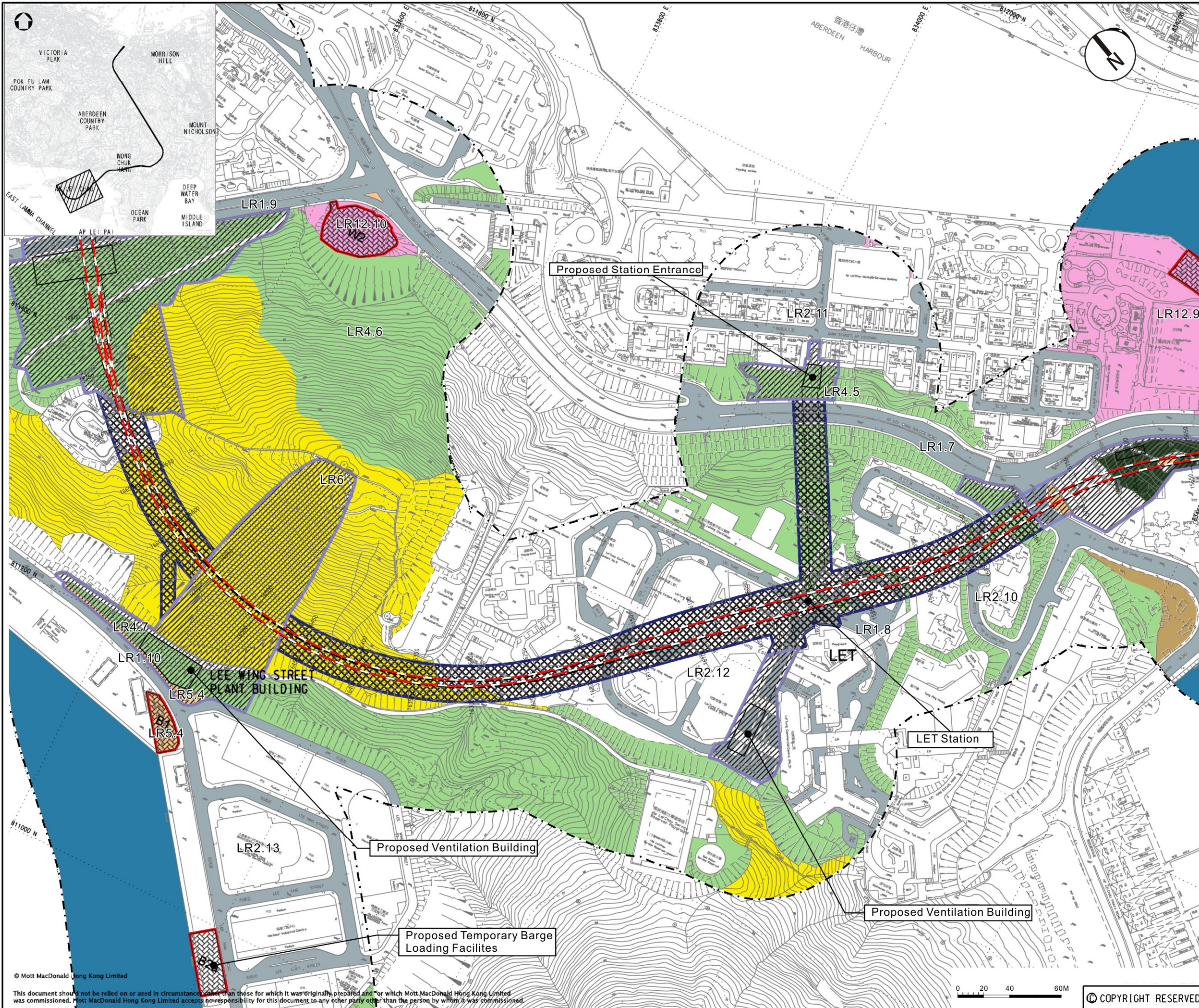
Designed	Drawn	Dwg.Chk.	Scale	Project	Drawing No.	Eng.Chk.	Coordination	Approved	Status	Rev
	EIK	ELK	As Shown	CAD File				CJF		

This document should not be relied on or used in circumstances other than those for which it was originally prepared and for which Mott MacDonald Hong Kong Limited was commissioned. Mott MacDonald Hong Kong Limited accepts no responsibility for this document to any other party other than the person by whom it was commissioned.

© COPYRIGHT RESERVED

Figure 6.2.8





### Legend

- Proposed SIL(E) Alignment
- 100M Study Boundary for Landscape Impact Assessment
- Proposed SIL(E) Station
- Proposed Works Site (Ground Level and Underground)
- Proposed Works Site (Underground)
- Proposed Works Area (Ground Level)
- LR3.1** Landscape Resources Sub-group
  - LR1 Major Road and Highway
  - LR2 Developed Area
  - LR3 Natural Woodland
  - LR4 Mixed Woodland
  - LR5 Roadside Amenity
  - LR6 Grassland/Shrubland Mosaic
  - LR7 Waterbody
  - LR8 Modified Watercourse
  - LR9 Marshland
  - LR10 Waste Land / Open Field
  - LR11 Agricultural Land
  - LR12 Open Space

Rev	Date	Drawn/Description	Chk'd/App'd

Client

Mott MacDonald

Mott MacDonald Hong Kong Ltd  
 7th Floor  
 West Wing Office Building  
 New World Centre  
 20 Salisbury Road  
 Tsim Sha Tsui, Kowloon  
 Hong Kong  
 Tel: 2828 5757  
 Fax: 2827 1823  
 Web: www.mottmac.com.hk

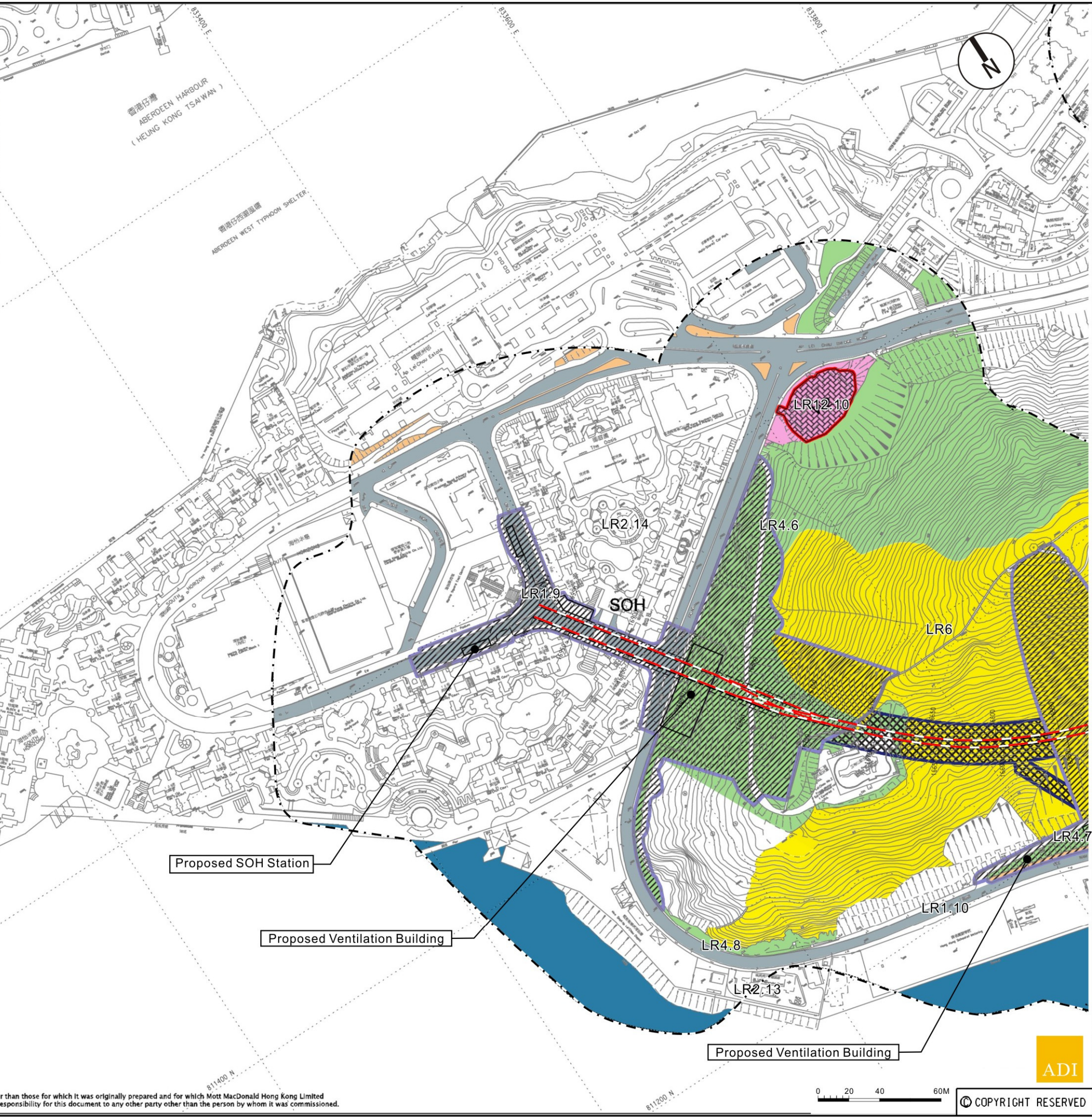
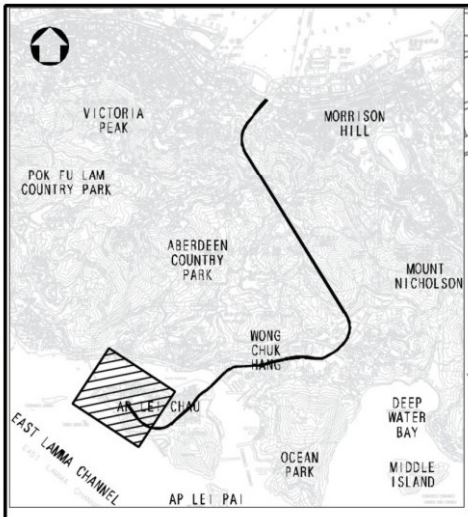
Project

**CONSULTANCY AGREEMENT NO. NEX/2301**  
**SOUTH ISLAND LINE (EAST)**  
**ENVIRONMENTAL IMPACT ASSESSMENT**

Title

**Landscape Resources**  
**Sheet 9 of 13**

Designed	Drawn	Dwg.Chk.	Scale	Project	Drawing No.	Eng.Chk.	Coordination	Approved	Status	Rev
	EIK	ELK	As Shown	CAD File				CJF		
	06/10	06/10								



### Legend

- Proposed SIL(E) Alignment
- 100M Study Boundary for Landscape Impact Assessment
- Proposed SIL(E) Station
- Proposed Works Site (Ground Level and Underground)
- Proposed Works Site (Underground)
- Proposed Works Area (Ground Level)

### LR3.1 Landscape Resources Sub-group

- LR1 Major Road and Highway
- LR2 Developed Area
- LR3 Natural Woodland
- LR4 Mixed Woodland
- LR5 Roadside Amenity
- LR6 Grassland/Shrubland Mosaic
- LR7 Waterbody
- LR8 Modified Watercourse
- LR9 Marshland
- LR10 Waste Land / Open Field
- LR11 Agricultural Land
- LR12 Open Space

Rev	Date	Drawn/Description	Ch'kd/App'd



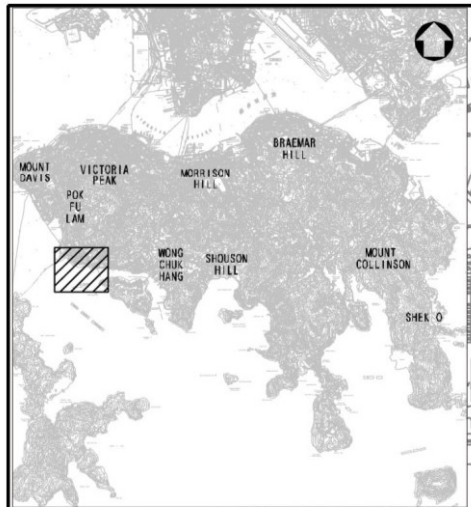
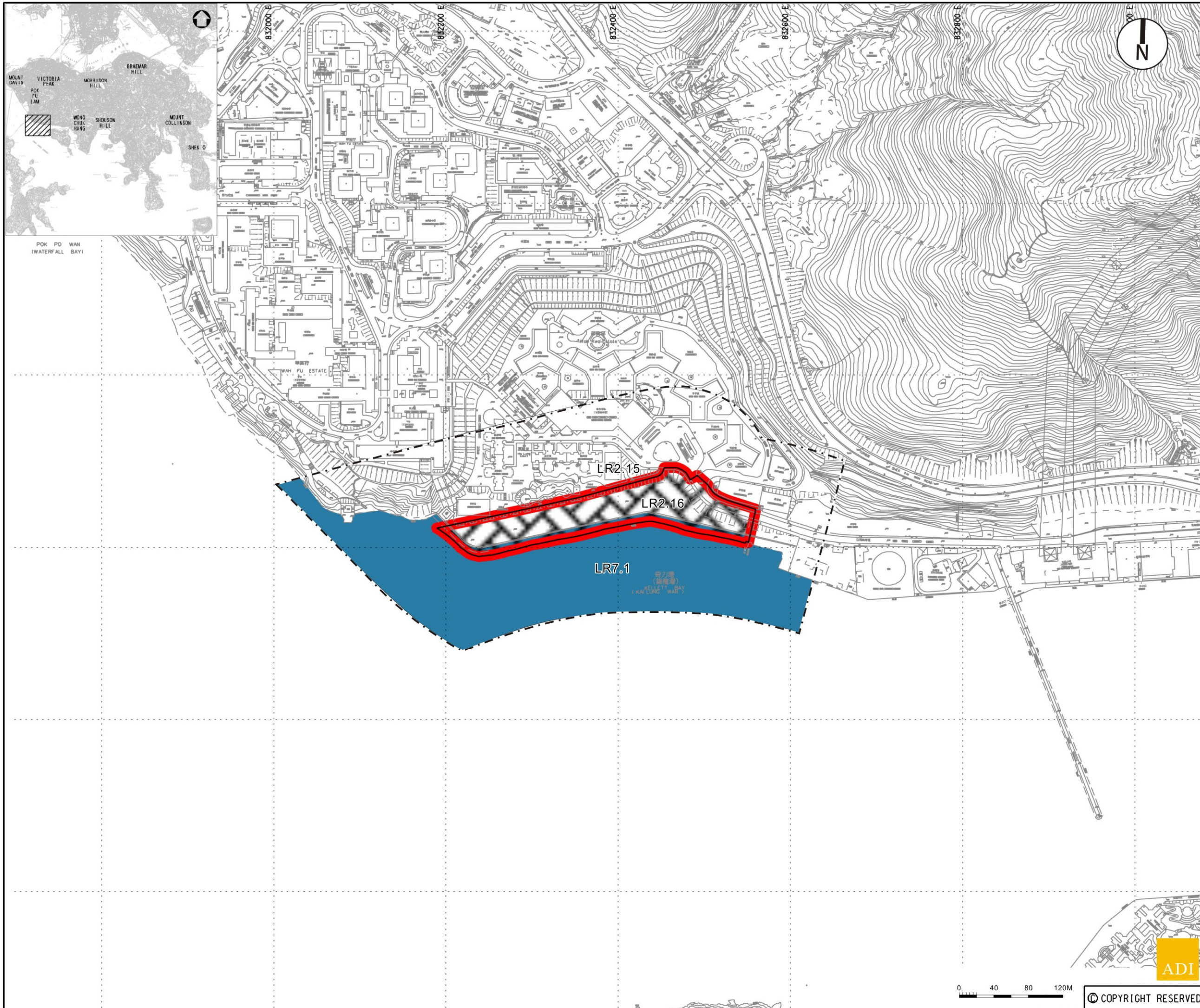
Project  
**CONSULTANCY AGREEMENT NO. NEX/2301**  
**SOUTH ISLAND LINE (EAST)**  
**ENVIRONMENTAL IMPACT ASSESSMENT**

Title  
**Landscape Resources**  
**Sheet 10 of 13**

Designed		Eng.Chk.			
Drawn	EIK	06/10	Coordination		
Dwg.Chk.	ELK	06/10	Approved	CJF	06/10
Scale	As Shown	Project	CAD File		Status
Drawing No.					Rev



Figure 6.2.10



- Legend**
- Proposed SIL(E) Alignment
  - 100M Study Boundary for Landscape Impact Assessment
  - Proposed SIL(E) Station
  - Proposed Works Site (Ground Level and Underground)
  - Proposed Works Site (Underground)
  - Proposed Works Area (Ground Level)
  - LR3.1** Landscape Resources Sub-group
  - LR1 Major Road and Highway
  - LR2 Developed Area
  - LR3 Natural Woodland
  - LR4 Mixed Woodland
  - LR5 Roadside Amenity
  - LR6 Grassland/Shrubland Mosaic
  - LR7 Waterbody
  - LR8 Modified Watercourse
  - LR9 Marshland
  - LR10 Waste Land / Open Field
  - LR11 Agricultural Land
  - LR12 Open Space

Rev	Date	Drawn/Description	Ch'kd/App'd
Client			



Project  
**CONSULTANCY AGREEMENT NO. NEX/2301**  
**SOUTH ISLAND LINE (EAST)**  
**ENVIRONMENTAL IMPACT ASSESSMENT**

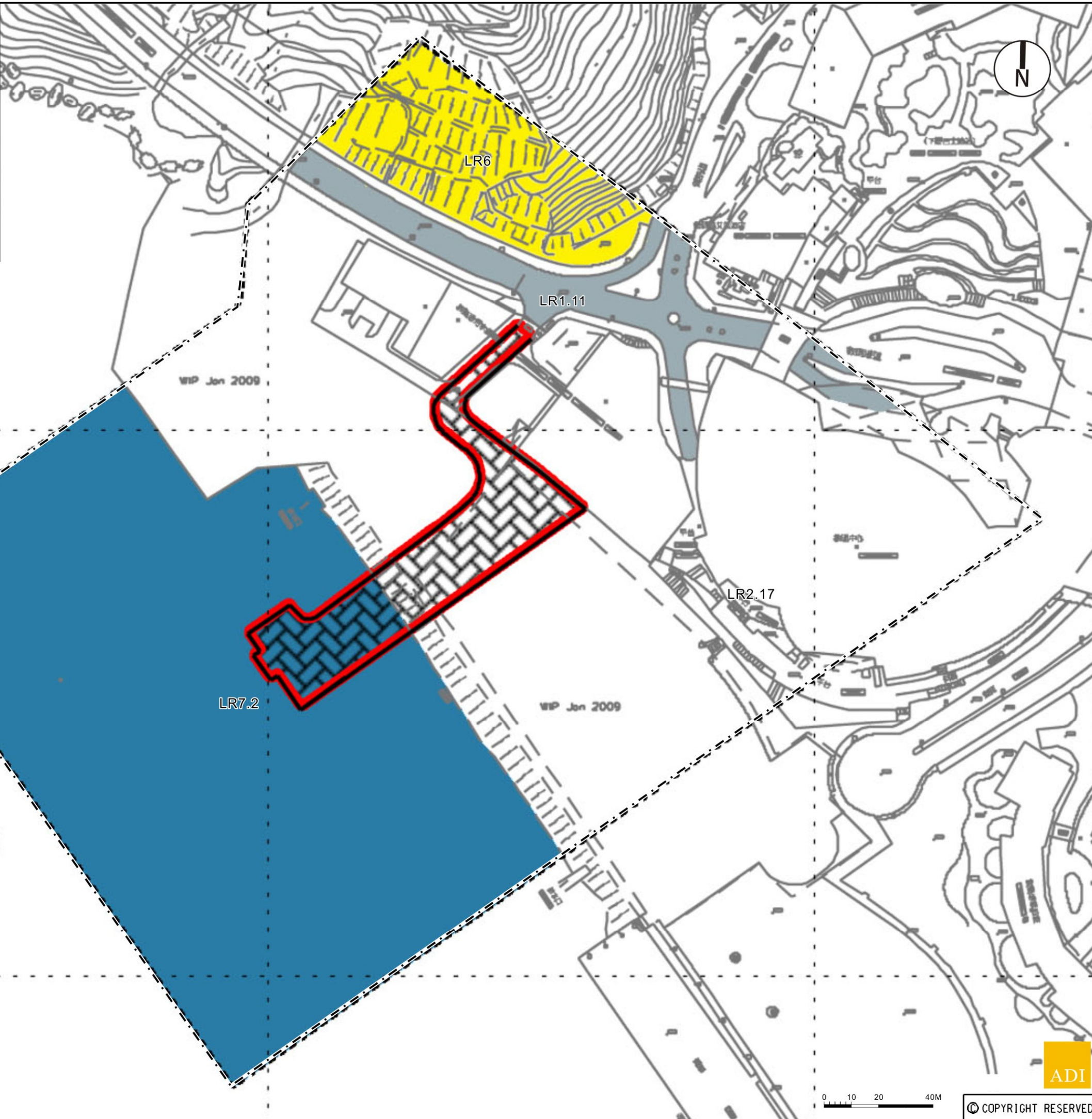
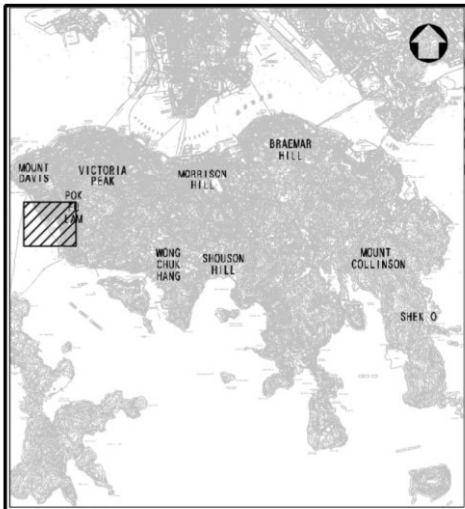
Title  
**Landscape Resources**  
**Sheet 11 of 13**

Designed	Eng.Chk.		
Drawn	EIK	06/10	Coordination
Dwg.Chk.	ELK	06/10	Approved C/JF 06/10
Scale	As Shown	Project	Status
		CAD File	
Drawing No.	Figure 6.2.11		Rev



© COPYRIGHT RESERVED





### Legend

- Proposed SIL(E) Alignment
- 100M Study Boundary for Landscape Impact Assessment
- Proposed SIL(E) Station
- Proposed Works Site (Ground Level and Underground)
- Proposed Works Site (Underground)
- Proposed Works Area (Ground Level)
- LR3.1** Landscape Resources Sub-group
  - LR1 Major Road and Highway
  - LR2 Developed Area
  - LR3 Natural Woodland
  - LR4 Mixed Woodland
  - LR5 Roadside Amenity
  - LR6 Grassland/Shrubland Mosaic
  - LR7 Waterbody
  - LR8 Modified Watercourse
  - LR9 Marshland
  - LR10 Waste Land / Open Field
  - LR11 Agricultural Land
  - LR12 Open Space

Rev	Date	Drawn/Description	Ch'kd/App'd



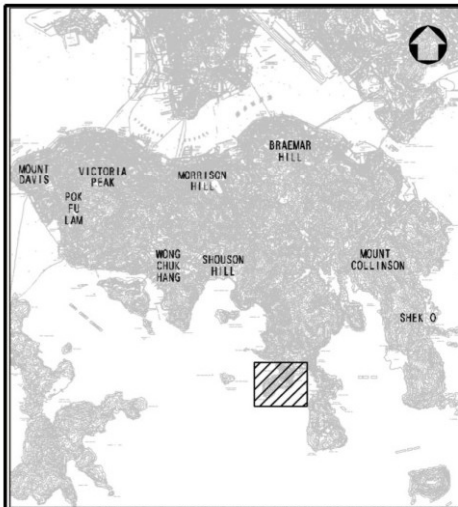
Mott MacDonald Hong Kong Ltd  
 7th Floor  
 West Wing Office Building  
 New World Centre  
 20 Salisbury Road  
 Tsim Sha Tsui, Kowloon  
 Hong Kong  
 Tel: 2828 5757  
 Fax: 2827 1823  
 Web: www.mottmac.com.hk

Project  
**CONSULTANCY AGREEMENT NO. NEX/2301**  
**SOUTH ISLAND LINE (EAST)**  
**ENVIRONMENTAL IMPACT ASSESSMENT**

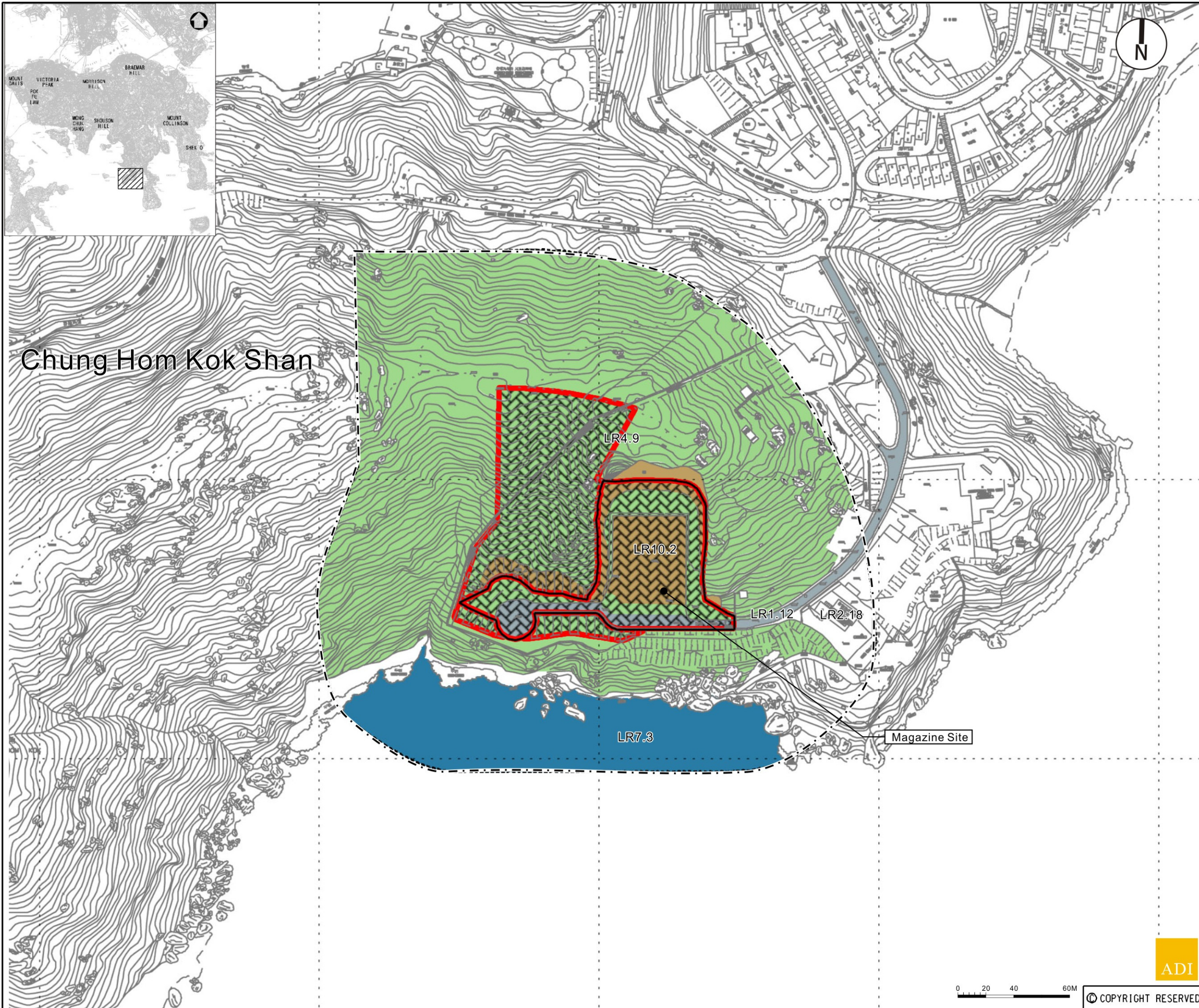
Title  
**Landscape Resources**  
**Sheet 12 of 13**

Designed	Eng.Chk.	Coordination	Approved	Status
Drawn	EIK	06/10		
Dwg.Chk.	ELK	06/10	CJF	06/10
Scale	As Shown	Project	CAD File	
Drawing No.	Figure 6.2.12			Rev

© COPYRIGHT RESERVED



# Chung Hom Kok Shan



- ### Legend
- Proposed SIL(E) Alignment
  - 100M Study Boundary for Landscape Impact Assessment
  - Proposed SIL(E) Station
  - Proposed Works Site (Ground Level and Underground)
  - Proposed Works Site (Underground)
  - Proposed Works Area (Ground Level)
  - LR3.1** Landscape Resources Sub-group
  - LR1 Major Road and Highway
  - LR2 Developed Area
  - LR3 Natural Woodland
  - LR4 Mixed Woodland
  - LR5 Roadside Amenity
  - LR6 Grassland/Shrubland Mosaic
  - LR7 Waterbody
  - LR8 Modified Watercourse
  - LR9 Marshland
  - LR10 Waste Land / Open Field
  - LR11 Agricultural Land
  - LR12 Open Space

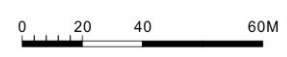
Rev	Date	Drawn/Description	Ch'kd/App'd



Project  
**CONSULTANCY AGREEMENT NO. NEX/2301**  
**SOUTH ISLAND LINE (EAST)**  
**ENVIRONMENTAL IMPACT ASSESSMENT**

Title  
**Landscape Resources**  
**Sheet 13 of 13**

Designed	Drawn	Dwg.Chk.	Scale	Drawing No.	Eng.Chk.	Coordination	Approved	Status	Rev
	EIK	ELK	As Shown				CJF		



© COPYRIGHT RESERVED



Figure 6.2.13



Rev	Date	Drawn Description	Ch'kd	App'd
Client				



Mott MacDonald Hong Kong Ltd  
7th Floor  
West Wing Office Building  
New World Centre  
20 Salisbury Road  
Tsim Sha Tsui, Kowloon  
Hong Kong  
Tel: 2825 5757  
Fax: 2827 1825  
Web: www.mottmac.com.hk

Project  
**CONSULTANCY AGREEMENT NO. NEX/2301**  
**SOUTH ISLAND LINE (EAST)**  
**ENVIRONMENTAL IMPACT ASSESSMENT**

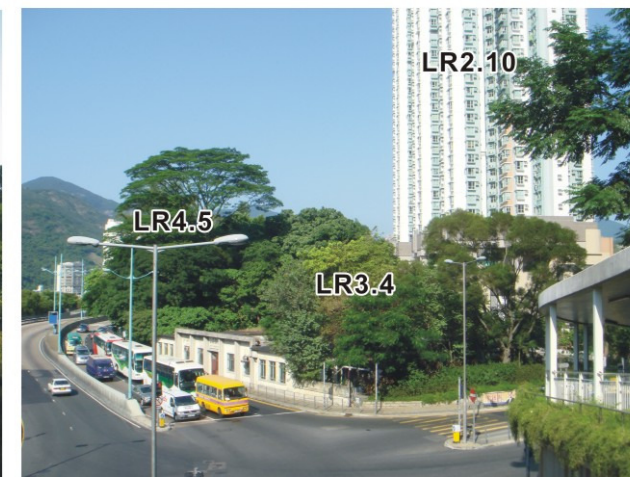
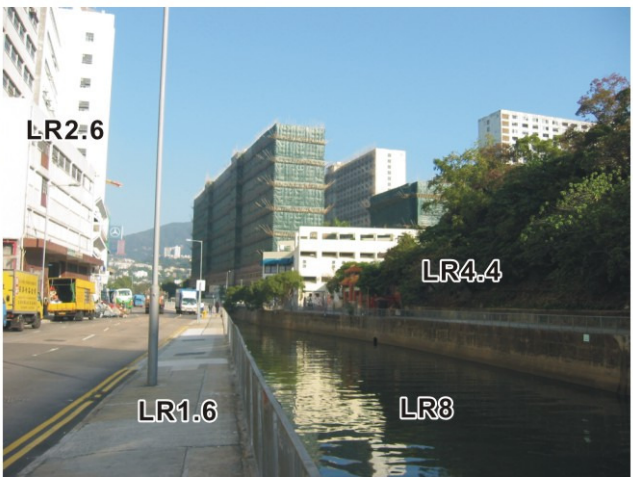
Title  
**Landscape Resources Photographs**  
**Sheet 1 of 5**

Designed		Eng.Chk.			
Drawn	EIK	06/10	Coordination		
Dwg.Chk.	ELK	06/10	Approved	CJF	06/10
Scale	N.T.S.	Project			Status
		CAD File			
Drawing No.					Rev

© COPYRIGHT RESERVED

Figure 6.2.14





Rev	Date	Drawn/Description	Ch'k'd/App'd



Project  
CONSULTANCY AGREEMENT NO. NEX/2301  
SOUTH ISLAND LINE (EAST)  
ENVIRONMENTAL IMPACT ASSESSMENT

Title  
Landscape Resources Photographs  
Sheet 2 of 5

Designed	EIK	06/10	Coordination		
Dwg.Chk.	ELK	06/10	Approved	CJF	06/10
Scale	N.T.S.	Project	CAD File		Status
Drawing No.					Rev



© COPYRIGHT RESERVED

Figure 6.2.15



Rev	Date	Drawn/Description	Ch'kd/App'd



Project  
CONSULTANCY AGREEMENT NO. NEX/2301  
SOUTH ISLAND LINE (EAST)  
ENVIRONMENTAL IMPACT ASSESSMENT

Title  
Landscape Resources Photographs  
Sheet 3 of 5

Designed	Drawn	Dwg.Chk.	Scale	Project	Status
	EIK	ELK	N.T.S.		
	06/10	06/10		CAD File	
	Coordination	Approved			
		CJF			

Drawing No. Figure 6.2.16 Rev

