

- ### Legend
- Proposed SIL(E) Alignment
 - 100M Study Boundary for Landscape Impact Assessment
 - Proposed SIL(E) Station
 - Proposed Works Site (Ground Level and Underground)
 - Proposed Works Site (Underground)
 - Proposed Works Area (Ground Level)
 - LR3.1** Landscape Resources Sub-group
 - LR1 Major Road and Highway
 - LR2 Developed Area
 - LR3 Natural Woodland
 - LR4 Mixed Woodland
 - LR5 Roadside Amenity
 - LR6 Grassland/Shrubland Mosaic
 - LR7 Waterbody
 - LR8 Modified Watercourse
 - LR9 Marshland
 - LR10 Waste Land / Open Field
 - LR11 Agricultural Land
 - LR12 Open Space

Rev	Date	Drawn/Description	Cr'd/App'd



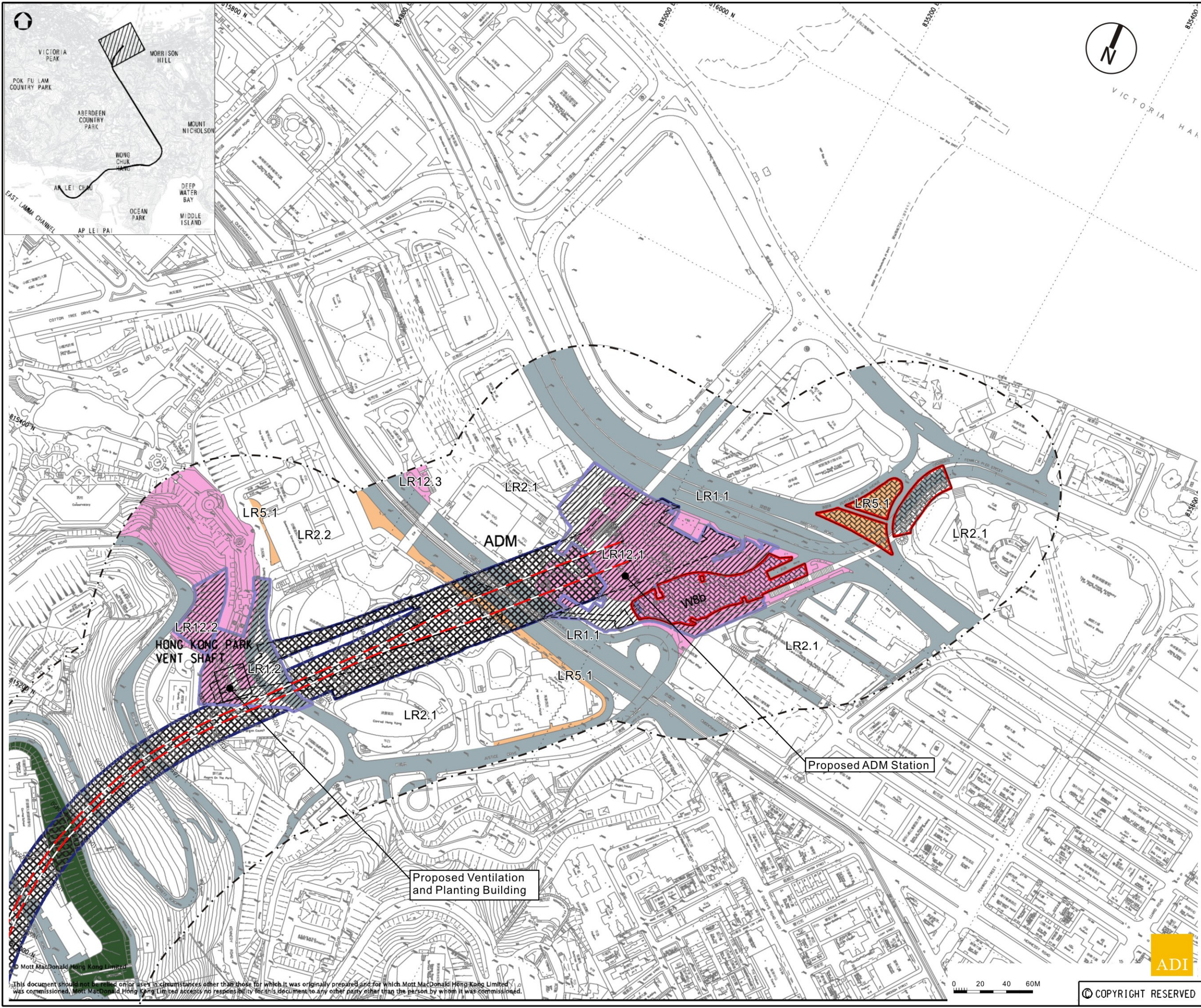
Project
CONSULTANCY AGREEMENT NO. NEX/2301
SOUTH ISLAND LINE (EAST)
ENVIRONMENTAL IMPACT ASSESSMENT

Title
Landscape Resources
Sheet 1 of 13

Designed	Eng.Chk.	Coordination	Approved	Status
Drawn EIK	06/10	Coordination	CJF	06/10
Dwg.Chk. ELK	06/10	Approved	CJF	06/10
Scale As Shown	Project CAD File			
Drawing No.	Figure 6.2.1			Rev

© Mott MacDonald Hong Kong Limited
This document should not be relied on or used in circumstances other than those for which it was originally prepared and for which Mott MacDonald Hong Kong Limited was commissioned. Mott MacDonald Hong Kong Limited accepts no responsibility for this document to any other party other than the person by whom it was commissioned.

ADI
COPYRIGHT RESERVED



Legend

- Proposed SIL(E) Alignment
- 100M Study Boundary for Landscape Impact Assessment
- Proposed SIL(E) Station
- Proposed Works Site (Ground Level and Underground)
- Proposed Works Site (Underground)
- Proposed Works Area (Ground Level)
- LR3.1** Landscape Resources Sub-group
 - LR1 Major Road and Highway
 - LR2 Developed Area
 - LR3 Natural Woodland
 - LR4 Mixed Woodland
 - LR5 Roadside Amenity
 - LR6 Grassland/Shrubland Mosaic
 - LR7 Waterbody
 - LR8 Modified Watercourse
 - LR9 Marshland
 - LR10 Waste Land / Open Field
 - LR11 Agricultural Land
 - LR12 Open Space

Rev	Date	Drawn/Description	Chk'd/App'd



Project
**CONSULTANCY AGREEMENT NO. NEX/2301
SOUTH ISLAND LINE (EAST)
ENVIRONMENTAL IMPACT ASSESSMENT**

Title
**Landscape Resources
Sheet 2 of 13**

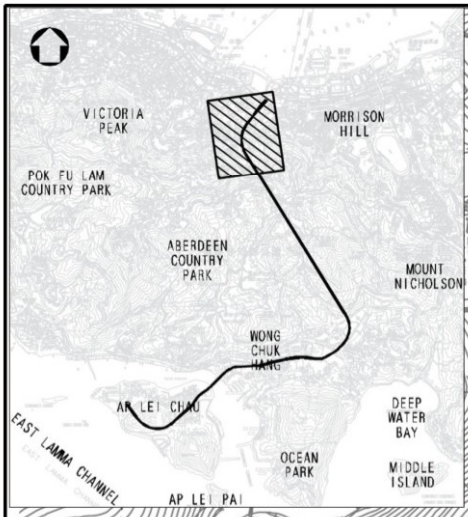
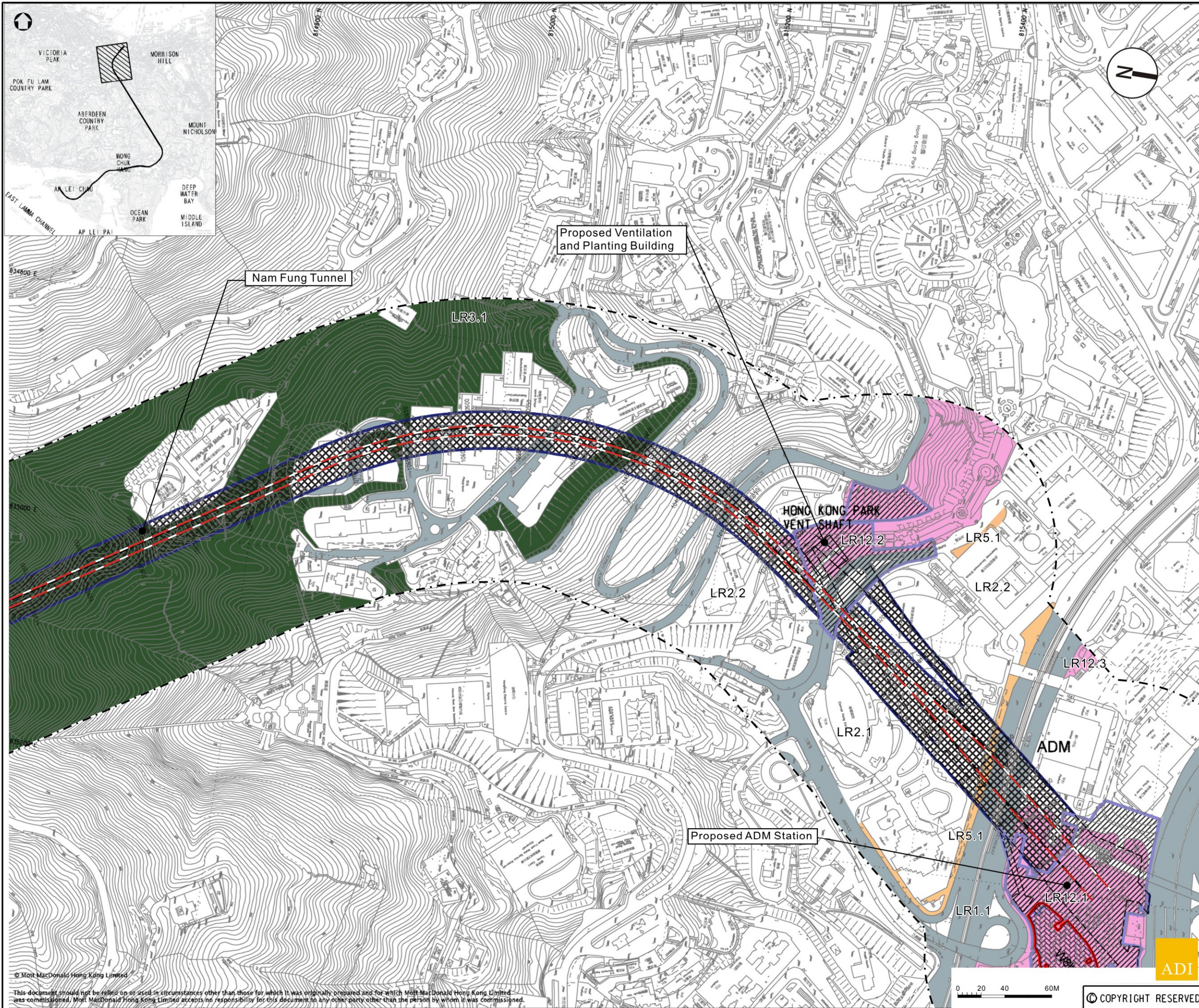
Designed	Eng.Chk.	Coordination	Approved	Status
Drawn: EIK	06/10	06/10	CJF	06/10
Dwg.Chk: ELK	06/10	Approved	CJF	06/10
Scale: As Shown	Project: CAD File			
Drawing No.:	Figure 6.2.2			Rev

This document should not be relied on or used in circumstances other than those for which it was originally prepared and for which Mott MacDonald Hong Kong Limited was commissioned. Mott MacDonald Hong Kong Limited accepts no responsibility for this document to any other party other than the person by whom it was commissioned.



© COPYRIGHT RESERVED





- ### Legend
- Proposed SIL(E) Alignment
 - 100M Study Boundary for Landscape Impact Assessment
 - Proposed SIL(E) Station
 - Proposed Works Site (Ground Level and Underground)
 - Proposed Works Site (Underground)
 - Proposed Works Area (Ground Level)
 - LR3.1** Landscape Resources Sub-group
 - LR1 Major Road and Highway
 - LR2 Developed Area
 - LR3 Natural Woodland
 - LR4 Mixed Woodland
 - LR5 Roadside Amenity
 - LR6 Grassland/Shrubland Mosaic
 - LR7 Waterbody
 - LR8 Modified Watercourse
 - LR9 Marshland
 - LR10 Waste Land / Open Field
 - LR11 Agricultural Land
 - LR12 Open Space

Rev	Date	Drawn/Description	Chk'd/App'd



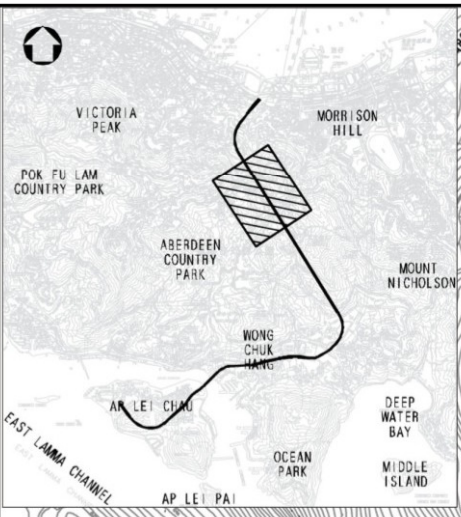
Project
CONSULTANCY AGREEMENT NO. NEX/2301
SOUTH ISLAND LINE (EAST)
ENVIRONMENTAL IMPACT ASSESSMENT





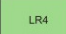
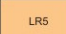
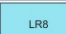
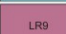
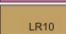

Title
Landscape Resources
Sheet 3 of 13

Designed	Drawn	Dwg.Chk.	Scale	Project	Drawing No.	Eng.Chk.	Coordination	Approved	Status	Rev
	EIK	ELK	As Shown	CAD File			CJF			

© Mott MacDonald Hong Kong Limited
This document should not be relied on or used in circumstances other than those for which it was originally prepared and for which Mott MacDonald Hong Kong Limited was commissioned. Mott MacDonald Hong Kong Limited accepts no responsibility for this document to any other party other than the person by whom it was commissioned.

Figure 6.2.3



- ### Legend
-  Proposed SIL(E) Alignment
 -  100M Study Boundary for Landscape Impact Assessment
 -  Proposed SIL(E) Station
 -  Proposed Works Site (Ground Level and Underground)
 -  Proposed Works Site (Underground)
 -  Proposed Works Area (Ground Level)
 - LR3.1** Landscape Resources Sub-group
 -  LR1 Major Road and Highway
 -  LR2 Developed Area
 -  LR3 Natural Woodland
 -  LR4 Mixed Woodland
 -  LR5 Roadside Amenity
 -  LR6 Grassland/Shrubland Mosaic
 -  LR7 Waterbody
 -  LR8 Modified Watercourse
 -  LR9 Marshland
 -  LR10 Waste Land / Open Field
 -  LR11 Agricultural Land
 -  LR12 Open Space

Rev	Date	Drawn/Description	Ch'kd/App'd

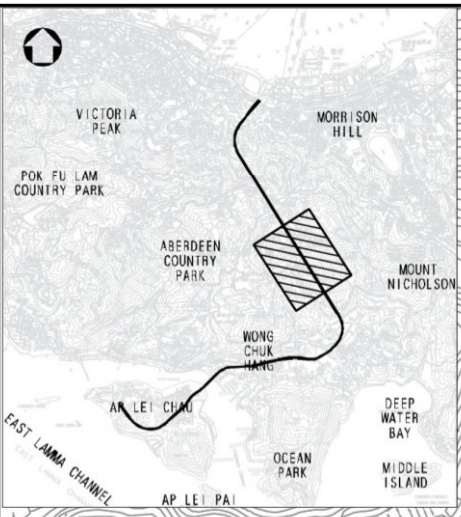


Project
**CONSULTANCY AGREEMENT NO. NEX/2301
SOUTH ISLAND LINE (EAST)
ENVIRONMENTAL IMPACT ASSESSMENT**

Title
**Landscape Resources
Sheet 4 of 13**

Designed	Eng.Chk.		
Drawn EIK	06/10	Coordination	
Dwg.Chk. ELK	06/10	Approved	CJF 06/10
Scale As Shown	Project CAD File	Status	
Drawing No.	Figure 6.2.4		Rev

© Mott MacDonald Hong Kong Limited
This document should not be relied on or used in circumstances other than those for which it was originally prepared and for which Mott MacDonald Hong Kong Limited was commissioned. Mott MacDonald Hong Kong Limited accepts no responsibility for this document to any other party other than the person by whom it was commissioned.



Legend

- Proposed SIL(E) Alignment
- 100M Study Boundary for Landscape Impact Assessment
- Proposed SIL(E) Station
- Proposed Works Site (Ground Level and Underground)
- Proposed Works Site (Underground)
- Proposed Works Area (Ground Level)
- LR3.1** Landscape Resources Sub-group
 - LR1 Major Road and Highway
 - LR2 Developed Area
 - LR3 Natural Woodland
 - LR4 Mixed Woodland
 - LR5 Roadside Amenity
 - LR6 Grassland/Shrubland Mosaic
 - LR7 Waterbody
 - LR8 Modified Watercourse
 - LR9 Marshland
 - LR10 Waste Land / Open Field
 - LR11 Agricultural Land
 - LR12 Open Space

Rev	Date	Drawn/Description	Ch'kd/App'd
Client			



Mott MacDonald Hong Kong Ltd
 7th Floor
 West Wing Office Building
 New World Centre
 20 Salisbury Road
 Tsim Sha Tsui, Kowloon
 Hong Kong
 Tel: 2828 5757
 Fax: 2827 1823
 Web: www.mottmac.com.hk

Project
CONSULTANCY AGREEMENT NO. NEX/2301
SOUTH ISLAND LINE (EAST)
ENVIRONMENTAL IMPACT ASSESSMENT

Title
Landscape Resources
Sheet 5 of 13

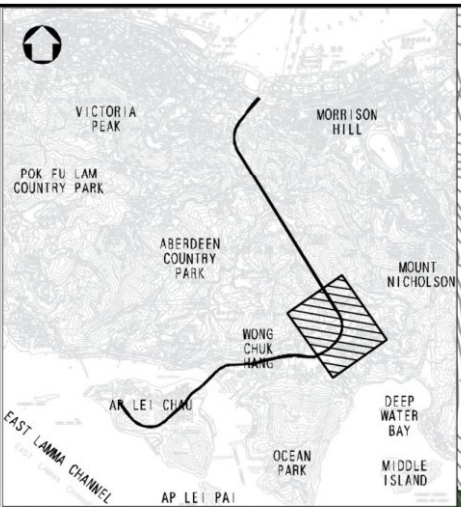
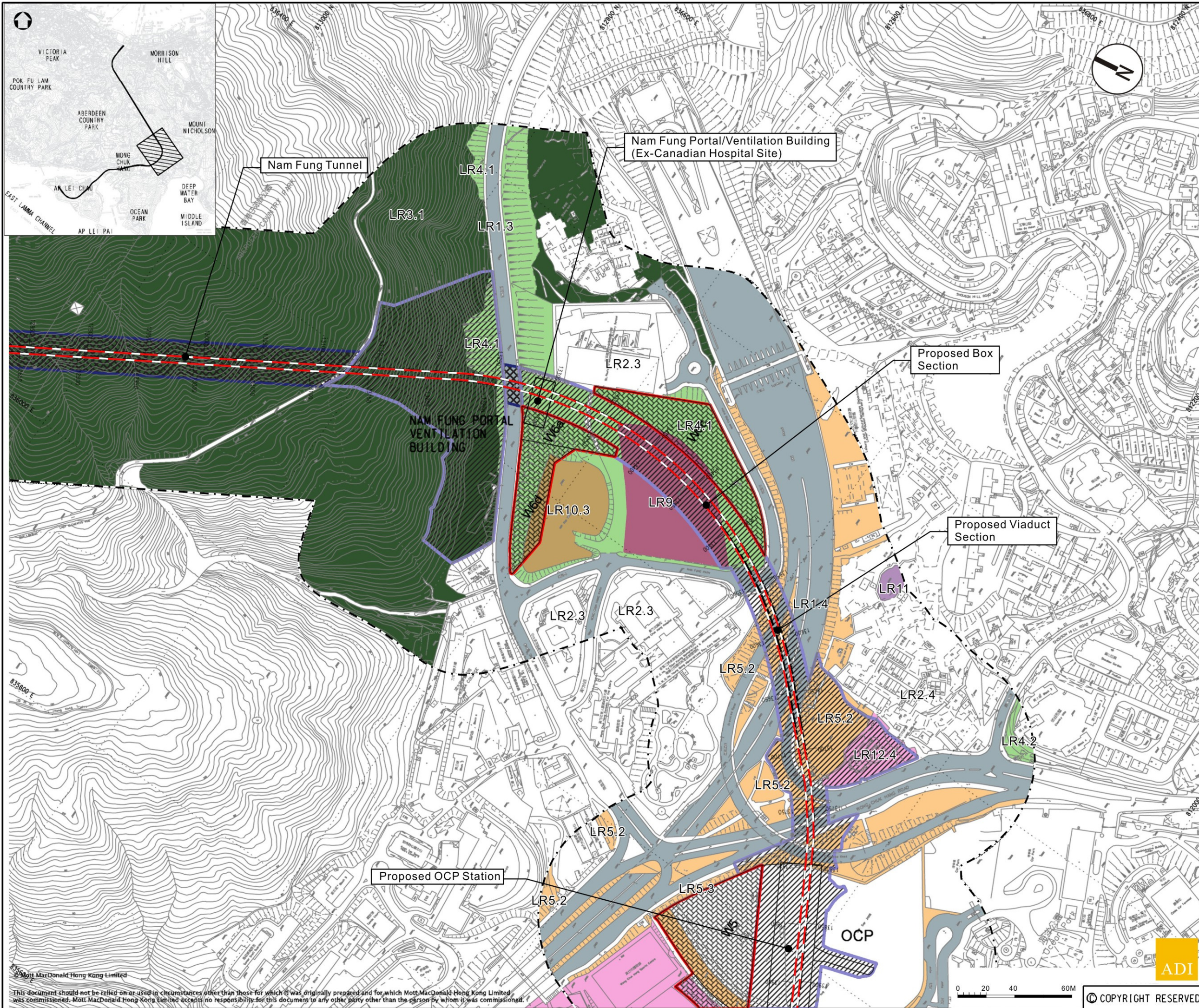
Designed	Eng.Chk.		
Drawn: EIK	06/10	Coordination	
Dwg.Chk: ELK	06/10	Approved: CJF	06/10
Scale: As Shown	Project: CAD File	Status:	
Drawing No.:	Figure 6.2.5		Rev:

© Mott MacDonald Hong Kong Limited

This document should not be relied on or used in circumstances other than those for which it was originally prepared and for which Mott MacDonald Hong Kong Limited was commissioned. Mott MacDonald Hong Kong Limited accepts no responsibility for this document to any other party other than the person by whom it was commissioned.



ADJ
 COPYRIGHT RESERVED



- ### Legend
- Proposed SIL(E) Alignment
 - 100M Study Boundary for Landscape Impact Assessment
 - Proposed SIL(E) Station
 - Proposed Works Site (Ground Level and Underground)
 - Proposed Works Site (Underground)
 - Proposed Works Area (Ground Level)
 - LR3.1** Landscape Resources Sub-group
 - LR1 Major Road and Highway
 - LR2 Developed Area
 - LR3 Natural Woodland
 - LR4 Mixed Woodland
 - LR5 Roadside Amenity
 - LR6 Grassland/Shrubland Mosaic
 - LR7 Waterbody
 - LR8 Modified Watercourse
 - LR9 Marshland
 - LR10 Waste Land / Open Field
 - LR11 Agricultural Land
 - LR12 Open Space

Rev	Date	Drawn/Description	Ch'kd/App'd

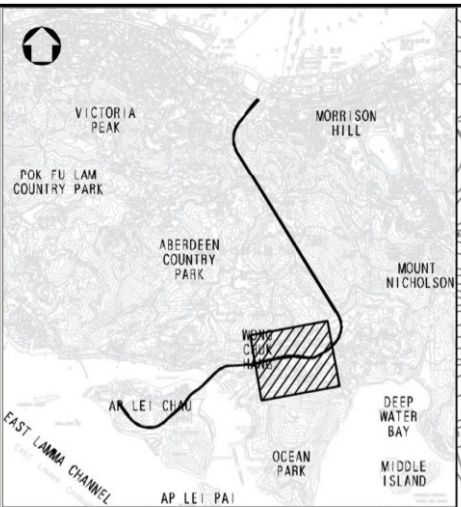
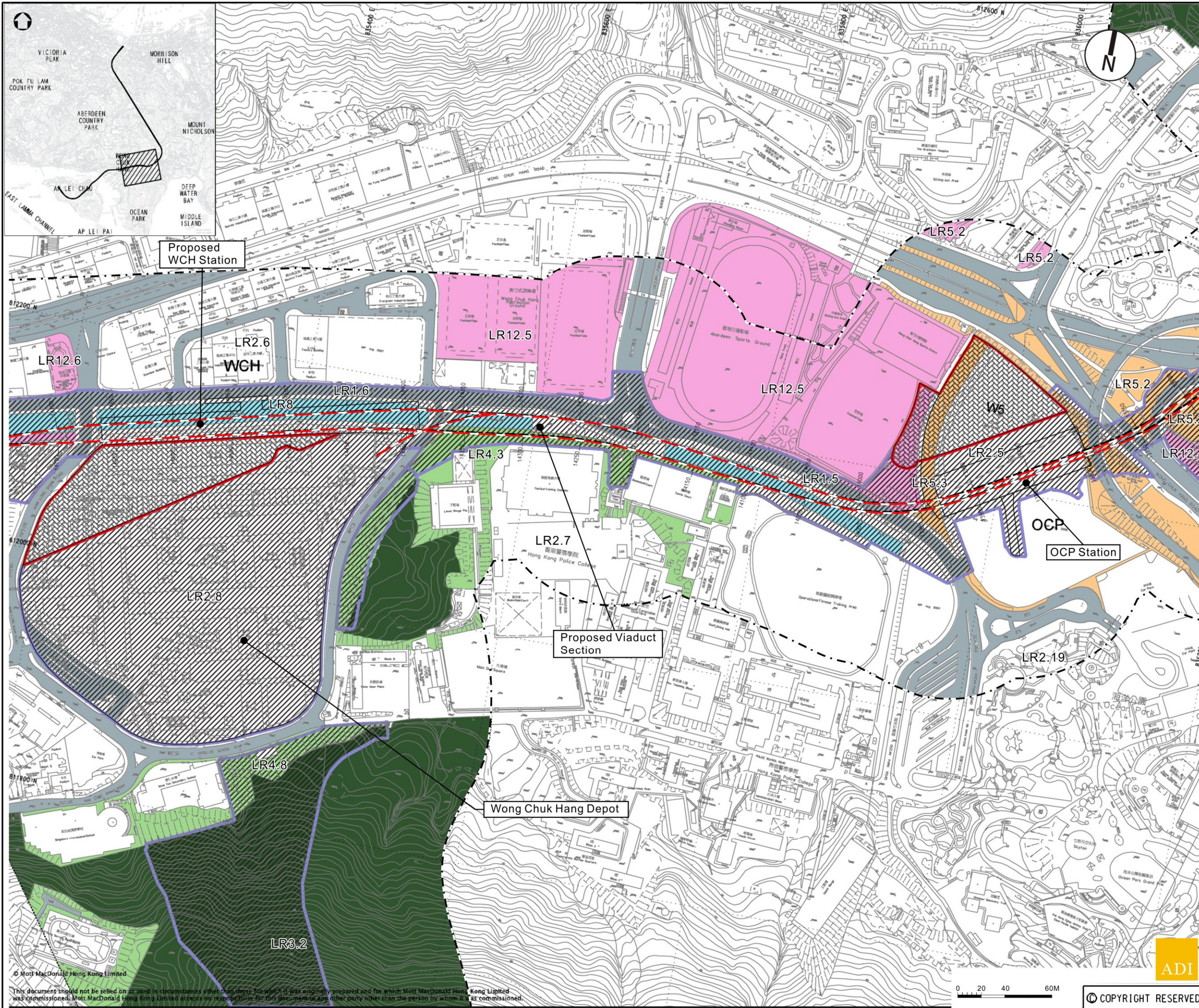


Project
CONSULTANCY AGREEMENT NO. NEX/2301
SOUTH ISLAND LINE (EAST)
ENVIRONMENTAL IMPACT ASSESSMENT

Title
Landscape Resources
Sheet 6 of 13

Designed	Eng.Chk.	Coordination	Approved	Status
Drawn: EIK	06/10	06/10	CJF	06/10
Dwg.Chk: ELK	06/10	Approved	CJF	06/10
Scale: As Shown	Project: CAD File			
Drawing No.:	Figure 6.2.6			

© Mott MacDonald Hong Kong Limited
 This document should not be relied on or used in circumstances other than those for which it was originally prepared and for which Mott MacDonald Hong Kong Limited was commissioned. Mott MacDonald Hong Kong Limited accepts no responsibility for this document to any other party other than the person by whom it was commissioned.



- ### Legend
- Proposed SIL(E) Alignment
 - 100M Study Boundary for Landscape Impact Assessment
 - Proposed SIL(E) Station
 - Proposed Works Site (Ground Level and Underground)
 - Proposed Works Site (Underground)
 - Proposed Works Area (Ground Level)
 - LR3.1** Landscape Resources Sub-group
 - LR1 Major Road and Highway
 - LR2 Developed Area
 - LR3 Natural Woodland
 - LR4 Mixed Woodland
 - LR5 Roadside Amenity
 - LR6 Grassland/Shrubland Mosaic
 - LR7 Waterbody
 - LR8 Modified Watercourse
 - LR9 Marshland
 - LR10 Waste Land / Open Field
 - LR11 Agricultural Land
 - LR12 Open Space

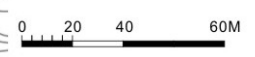
Rev	Date	Drawn/Description	Cr'd/App'd



Project
CONSULTANCY AGREEMENT NO. NEX/2301
SOUTH ISLAND LINE (EAST)
ENVIRONMENTAL IMPACT ASSESSMENT

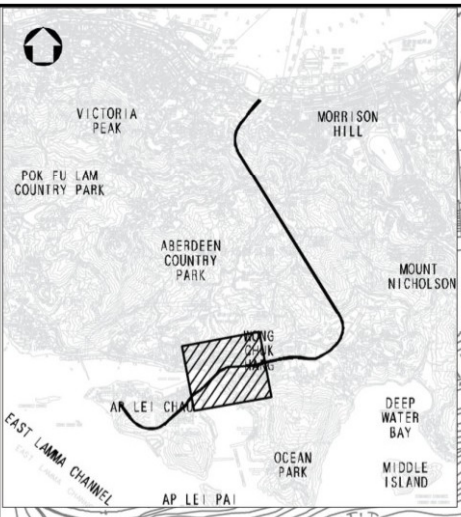
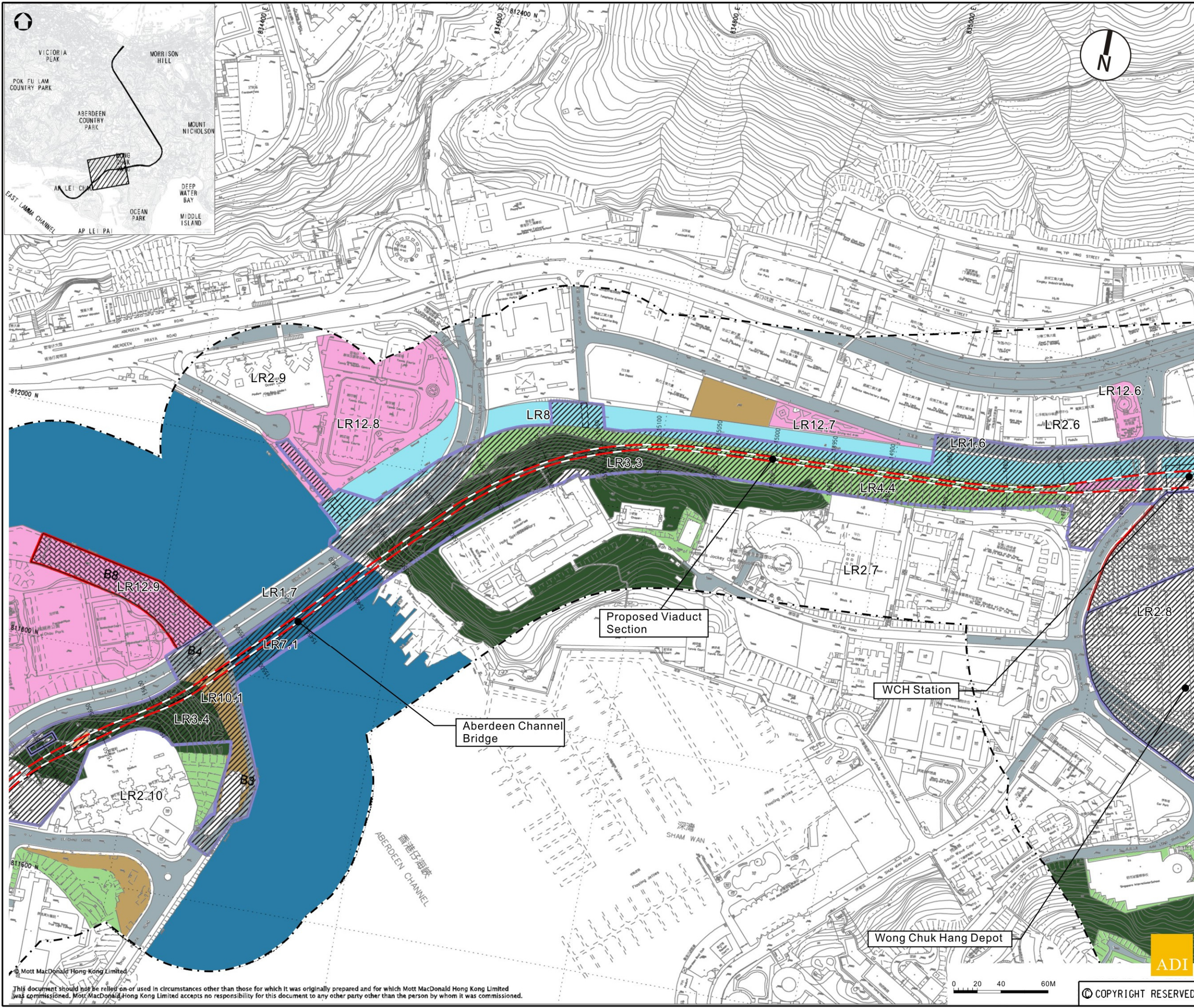
Title
Landscape Resources
Sheet 7 of 13

Designed	Drawn	Dwg.Chk.	Scale	Drawing No.	Eng.Chk.	Coordination	Approved	Status	Rev
	EIK	ELK	As Shown				CJF		



© COPYRIGHT RESERVED

Figure 6.2.7



- ### Legend
- Proposed SIL(E) Alignment
 - 100M Study Boundary for Landscape Impact Assessment
 - Proposed SIL(E) Station
 - Proposed Works Site (Ground Level and Underground)
 - Proposed Works Site (Underground)
 - Proposed Works Area (Ground Level)
 - LR3.1** Landscape Resources Sub-group
 - LR1 Major Road and Highway
 - LR2 Developed Area
 - LR3 Natural Woodland
 - LR4 Mixed Woodland
 - LR5 Roadside Amenity
 - LR6 Grassland/Shrubland Mosaic
 - LR7 Waterbody
 - LR8 Modified Watercourse
 - LR9 Marshland
 - LR10 Waste Land / Open Field
 - LR11 Agricultural Land
 - LR12 Open Space

Rev	Date	Drawn/Description	Cr'd/App'd



Project
CONSULTANCY AGREEMENT NO. NEX/2301
SOUTH ISLAND LINE (EAST)
ENVIRONMENTAL IMPACT ASSESSMENT

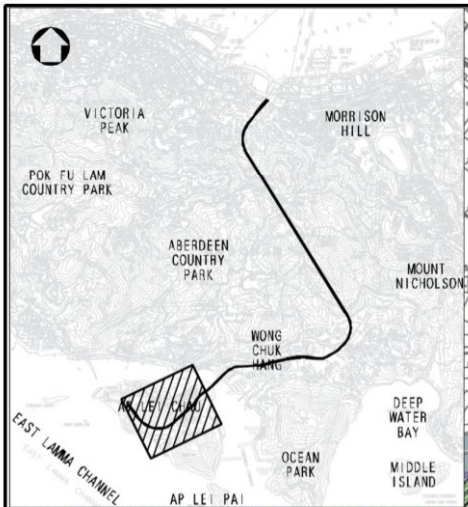
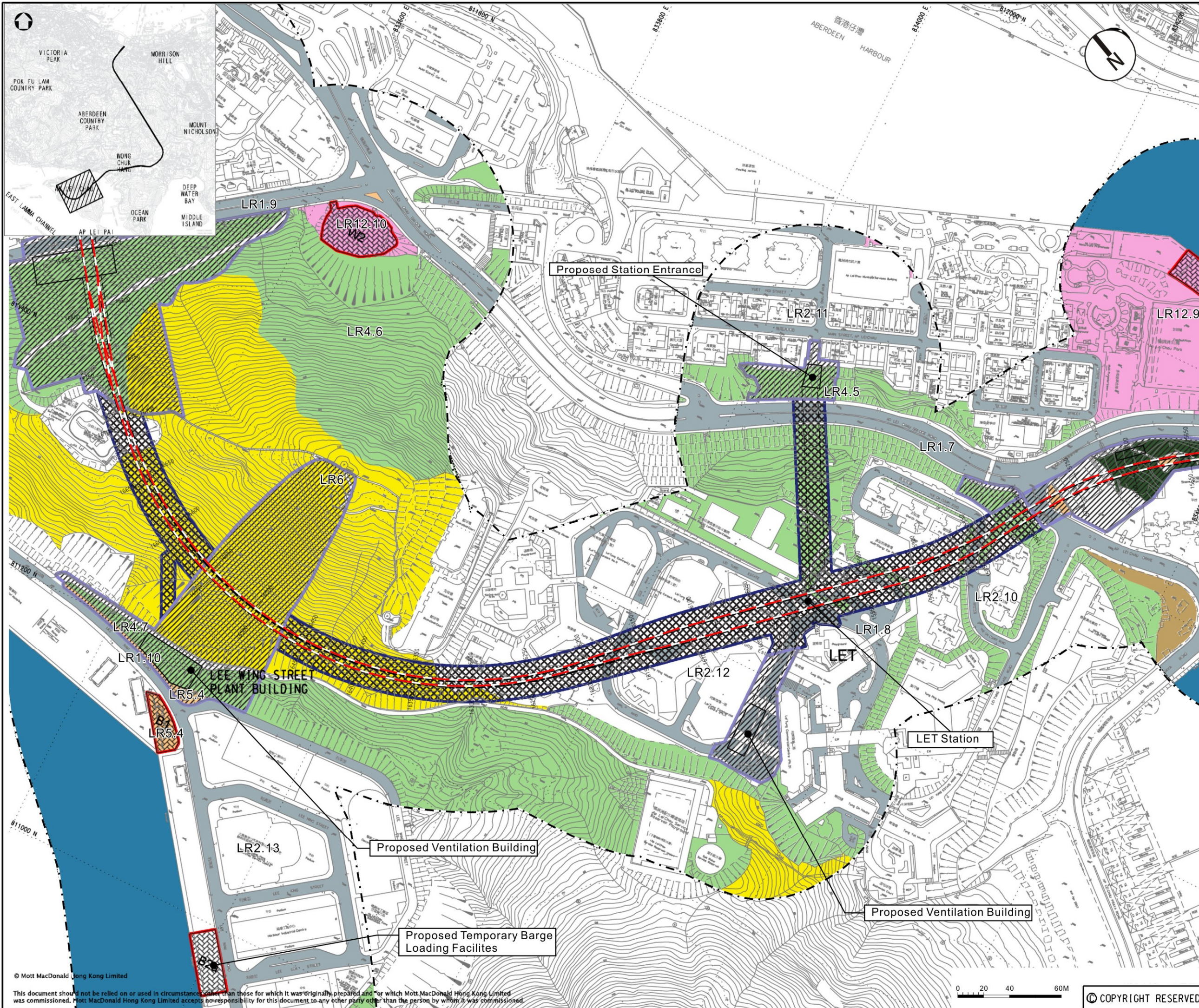
Title
Landscape Resources
Sheet 8 of 13

Designed	Eng.Chk.	Coordination	Approved	Status
Drawn: EIK	06/10	Coordination		
Dwg.Chk: ELK	06/10	Approved	CJF	06/10
Scale: As Shown	Project: CAD File			
Drawing No.:	Figure 6.2.8			Rev:

This document should not be relied on or used in circumstances other than those for which it was originally prepared and for which Mott MacDonald Hong Kong Limited was commissioned. Mott MacDonald Hong Kong Limited accepts no responsibility for this document to any other party other than the person by whom it was commissioned.

© COPYRIGHT RESERVED





Legend

- Proposed SIL(E) Alignment
- 100M Study Boundary for Landscape Impact Assessment
- Proposed SIL(E) Station
- Proposed Works Site (Ground Level and Underground)
- Proposed Works Site (Underground)
- Proposed Works Area (Ground Level)
- LR3.1** Landscape Resources Sub-group
 - LR1 Major Road and Highway
 - LR2 Developed Area
 - LR3 Natural Woodland
 - LR4 Mixed Woodland
 - LR5 Roadside Amenity
 - LR6 Grassland/Shrubland Mosaic
 - LR7 Waterbody
 - LR8 Modified Watercourse
 - LR9 Marshland
 - LR10 Waste Land / Open Field
 - LR11 Agricultural Land
 - LR12 Open Space

Rev	Date	Drawn/Description	Chk'd/App'd

Client

Mott MacDonald

Mott MacDonald Hong Kong Ltd
 7th Floor
 West Wing Office Building
 New World Centre
 20 Salisbury Road
 Tsim Sha Tsui, Kowloon
 Hong Kong
 Tel: 2828 5757
 Fax: 2827 1823
 Web: www.mottmac.com.hk

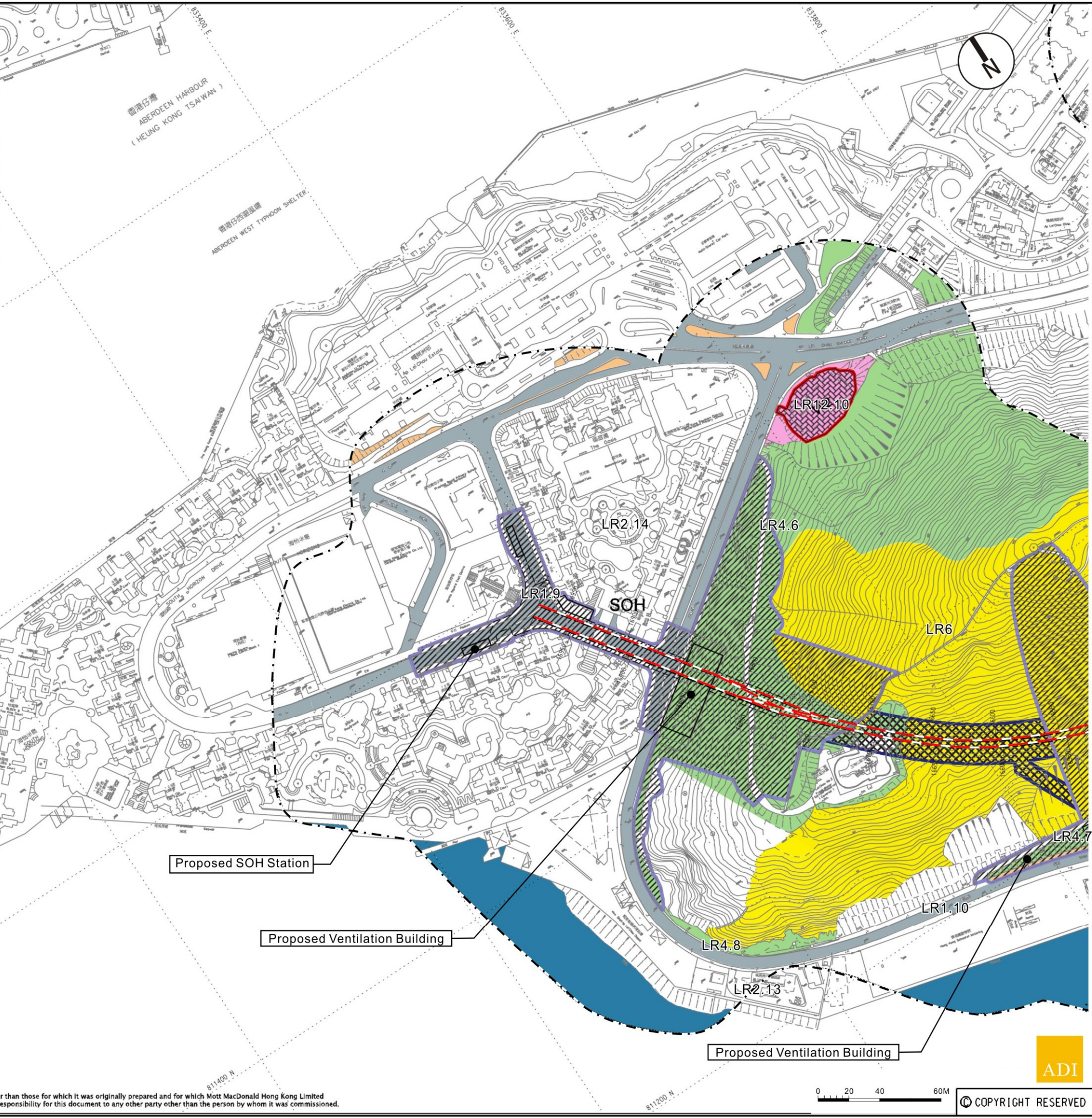
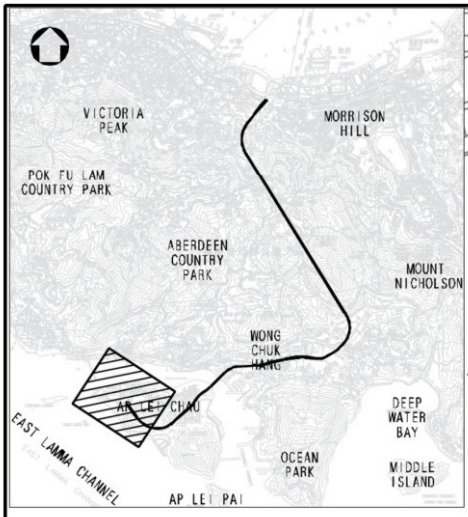
Project

CONSULTANCY AGREEMENT NO. NEX/2301
SOUTH ISLAND LINE (EAST)
ENVIRONMENTAL IMPACT ASSESSMENT

Title

Landscape Resources
Sheet 9 of 13

Designed	Eng.Chk.	Coordination	Approved		
Drawn	EIK	06/10			
Dwg.Chk.	ELK	06/10	Approved	CJF	06/10
Scale	As Shown	Project	CAD File		Status
Drawing No.					Rev



Legend

- Proposed SIL(E) Alignment
- 100M Study Boundary for Landscape Impact Assessment
- Proposed SIL(E) Station
- Proposed Works Site (Ground Level and Underground)
- Proposed Works Site (Underground)
- Proposed Works Area (Ground Level)

LR3.1 Landscape Resources Sub-group

- LR1 Major Road and Highway
- LR2 Developed Area
- LR3 Natural Woodland
- LR4 Mixed Woodland
- LR5 Roadside Amenity
- LR6 Grassland/Shrubland Mosaic
- LR7 Waterbody
- LR8 Modified Watercourse
- LR9 Marshland
- LR10 Waste Land / Open Field
- LR11 Agricultural Land
- LR12 Open Space

Rev	Date	Drawn/Description	Ch'kd/App'd

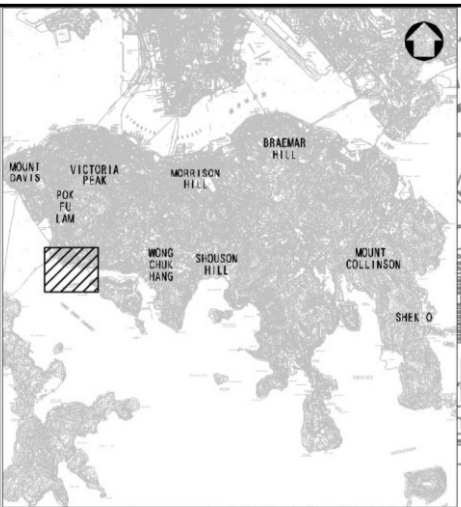
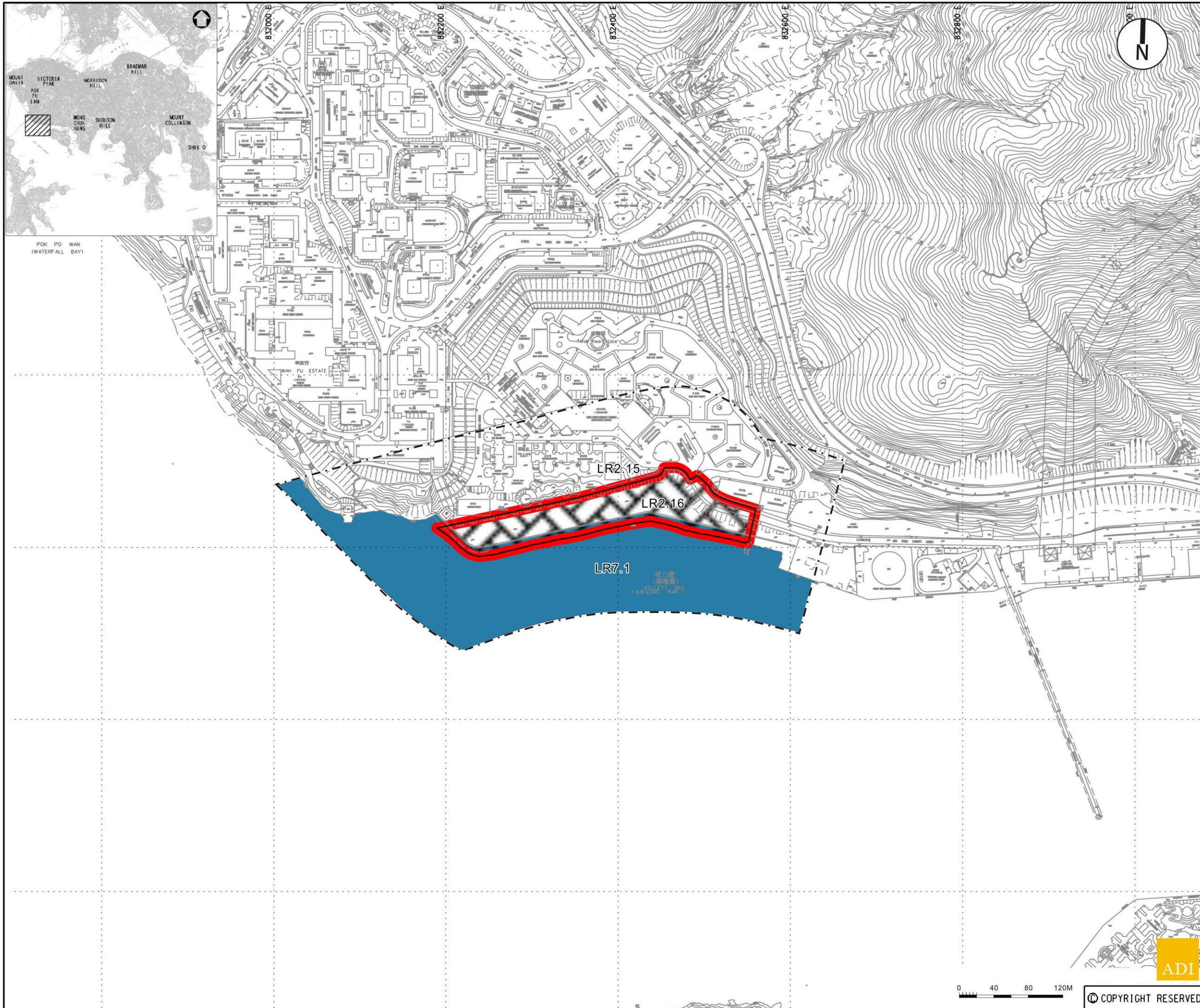


Project
CONSULTANCY AGREEMENT NO. NEX/2301
SOUTH ISLAND LINE (EAST)
ENVIRONMENTAL IMPACT ASSESSMENT

Title
Landscape Resources
Sheet 10 of 13

Designed	Eng.Chk.	Coordination	Approved	C/JF	06/10
Drawn	EIK	06/10			
Dwg.Chk.	ELK	06/10	Approved	C/JF	06/10
Scale	As Shown	Project	CAD File		Status
Drawing No.	Figure 6.2.10				Rev





- Legend**
- Proposed SIL(E) Alignment
 - 100M Study Boundary for Landscape Impact Assessment
 - Proposed SIL(E) Station
 - Proposed Works Site (Ground Level and Underground)
 - Proposed Works Site (Underground)
 - Proposed Works Area (Ground Level)
 - LR3.1** Landscape Resources Sub-group
 - LR1 Major Road and Highway
 - LR2 Developed Area
 - LR3 Natural Woodland
 - LR4 Mixed Woodland
 - LR5 Roadside Amenity
 - LR6 Grassland/Shrubland Mosaic
 - LR7 Waterbody
 - LR8 Modified Watercourse
 - LR9 Marshland
 - LR10 Waste Land / Open Field
 - LR11 Agricultural Land
 - LR12 Open Space

Rev	Date	Drawn/Description	Ch'kd/App'd
Client			



Mott MacDonald
 Mott MacDonald Hong Kong Ltd
 7th Floor
 West Wing Office Building
 New World Centre
 20 Salisbury Road
 Tsim Sha Tsui, Kowloon
 Hong Kong
 Tel: 2828 5757
 Fax: 2827 1823
 Web: www.mottmac.com.hk

Project
CONSULTANCY AGREEMENT NO. NEX/2301
SOUTH ISLAND LINE (EAST)
ENVIRONMENTAL IMPACT ASSESSMENT

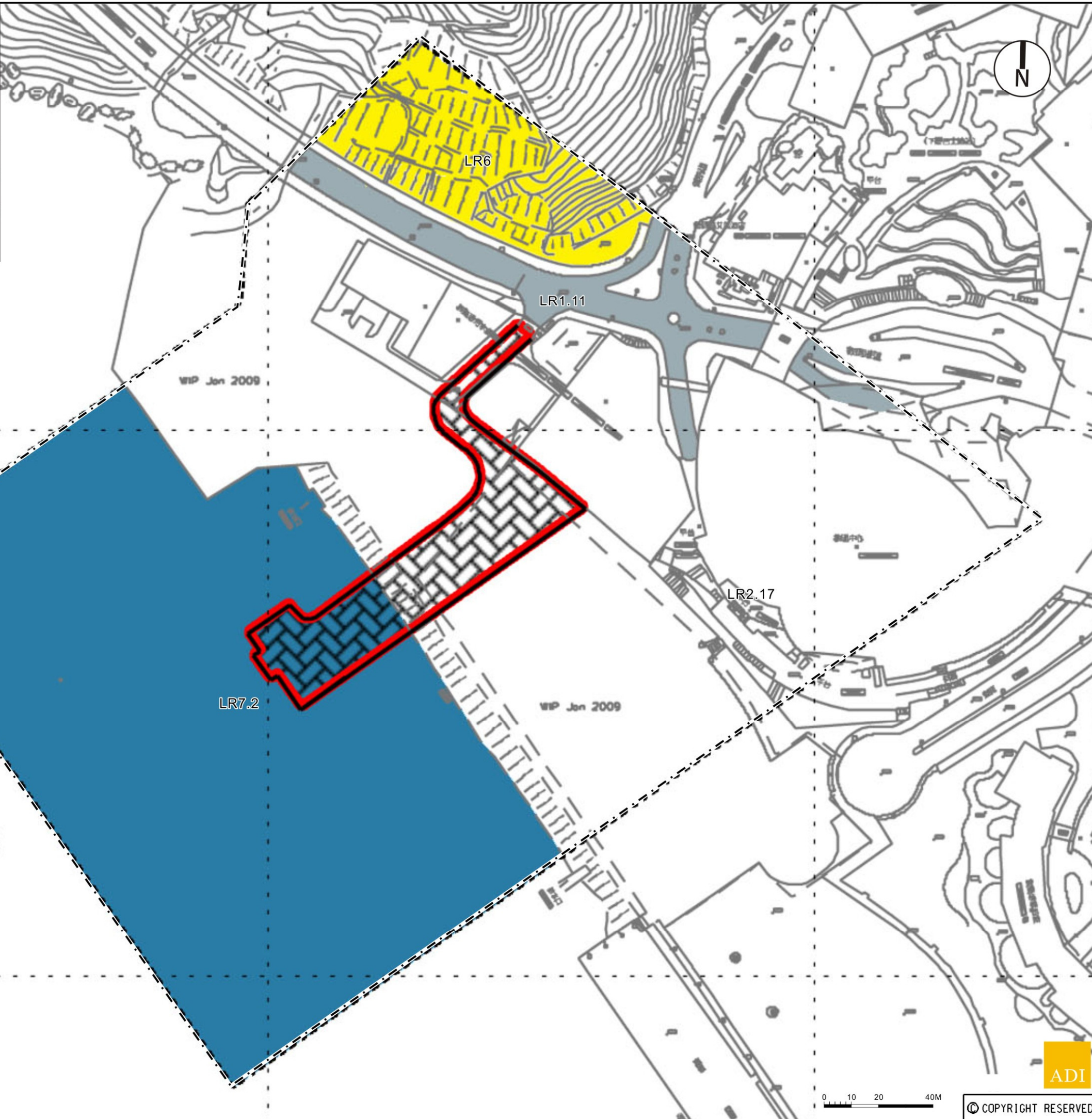
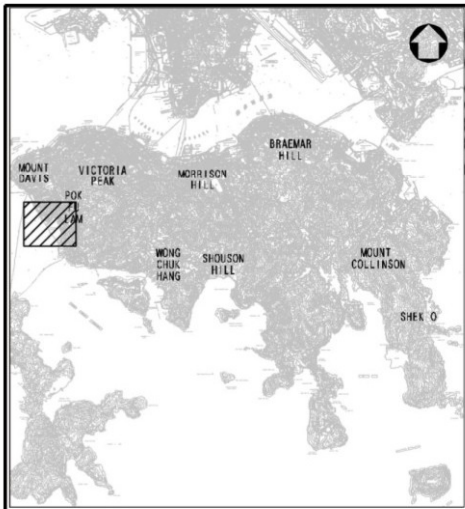
Title
Landscape Resources
Sheet 11 of 13

Designed	Eng.Chk.		
Drawn: EIK	06/10	Coordination	
Dwg.Chk.: ELK	06/10	Approved	CJF 06/10
Scale: As Shown	Project: CAD File	Status:	
Drawing No.:	Figure 6.2.11		Rev: -



© COPYRIGHT RESERVED





Legend

- Proposed SIL(E) Alignment
- 100M Study Boundary for Landscape Impact Assessment
- Proposed SIL(E) Station
- Proposed Works Site (Ground Level and Underground)
- Proposed Works Site (Underground)
- Proposed Works Area (Ground Level)
- LR3.1** Landscape Resources Sub-group
- LR1 Major Road and Highway
- LR2 Developed Area
- LR3 Natural Woodland
- LR4 Mixed Woodland
- LR5 Roadside Amenity
- LR6 Grassland/Shrubland Mosaic
- LR7 Waterbody
- LR8 Modified Watercourse
- LR9 Marshland
- LR10 Waste Land / Open Field
- LR11 Agricultural Land
- LR12 Open Space

Rev	Date	Drawn/Description	Ch'kd/App'd



Mott MacDonald Hong Kong Ltd
7th Floor
West Wing Office Building
New World Centre
20 Salisbury Road
Tsim Sha Tsui, Kowloon
Hong Kong
Tel: 2828 5757
Fax: 2827 1823
Web: www.mottmac.com.hk

Project
**CONSULTANCY AGREEMENT NO. NEX/2301
SOUTH ISLAND LINE (EAST)
ENVIRONMENTAL IMPACT ASSESSMENT**

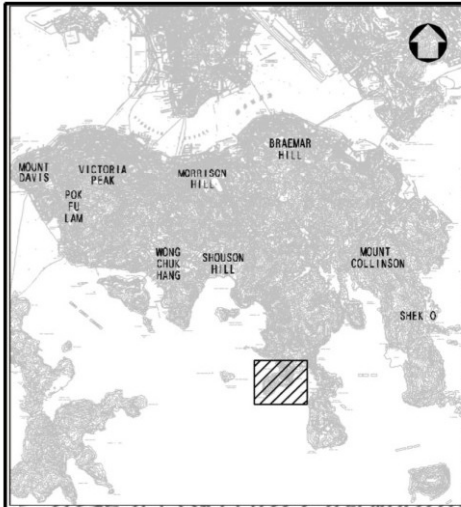
Title
**Landscape Resources
Sheet 12 of 13**

Designed	Eng.Chk.				
Drawn	EIK	06/10	Coordination		
Dwg.Chk.	ELK	06/10	Approved	CJF	06/10
Scale	As Shown	Project	CAD File	Status	
Drawing No.	Figure 6.2.12				Rev



© COPYRIGHT RESERVED





Chung Hom Kok Shan



- ### Legend
- Proposed SIL(E) Alignment
 - 100M Study Boundary for Landscape Impact Assessment
 - Proposed SIL(E) Station
 - Proposed Works Site (Ground Level and Underground)
 - Proposed Works Site (Underground)
 - Proposed Works Area (Ground Level)
 - LR3.1** Landscape Resources Sub-group
 - LR1 Major Road and Highway
 - LR2 Developed Area
 - LR3 Natural Woodland
 - LR4 Mixed Woodland
 - LR5 Roadside Amenity
 - LR6 Grassland/Shrubland Mosaic
 - LR7 Waterbody
 - LR8 Modified Watercourse
 - LR9 Marshland
 - LR10 Waste Land / Open Field
 - LR11 Agricultural Land
 - LR12 Open Space

Rev	Date	Drawn/Description	Ch'kd/App'd
Client			



Project
CONSULTANCY AGREEMENT NO. NEX/2301
SOUTH ISLAND LINE (EAST)
ENVIRONMENTAL IMPACT ASSESSMENT

Title
Landscape Resources
Sheet 13 of 13

Designed			Eng.Chk.		
Drawn	EIK	06/10	Coordination		
Dwg.Chk.	ELK	06/10	Approved	CJF	06/10
Scale	As Shown	Project	CAD File	Status	
Drawing No.	Figure 6.2.13				Rev



ADI
 COPYRIGHT RESERVED



Rev	Date	Drawn Description	Ch'kd	App'd
Client				



Mott MacDonald Hong Kong Ltd
7th Floor
West Wing Office Building
New World Centre
20 Salisbury Road
Tsim Sha Tsui, Kowloon
Hong Kong
Tel: 2825 5757
Fax: 2827 1825
Web: www.mottmac.com.hk

Project
CONSULTANCY AGREEMENT NO. NEX/2301
SOUTH ISLAND LINE (EAST)
ENVIRONMENTAL IMPACT ASSESSMENT

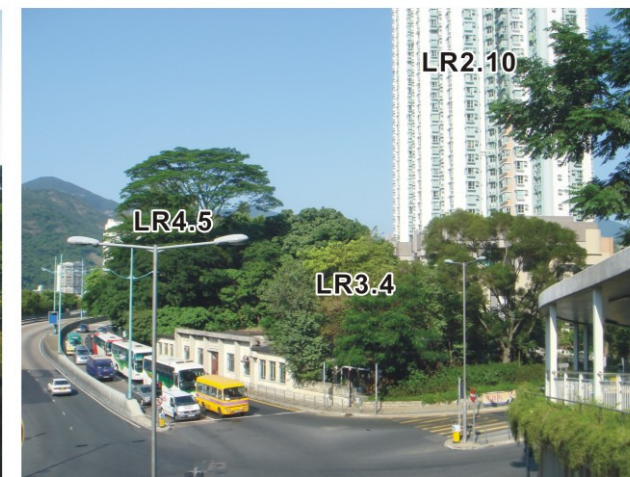
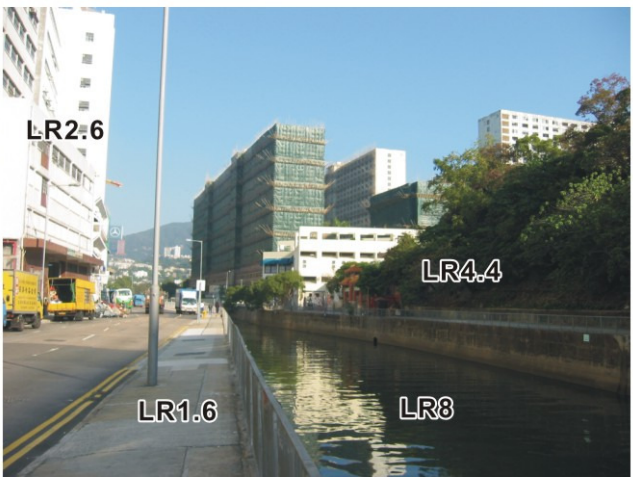
Title
Landscape Resources Photographs
Sheet 1 of 5

Designed		Eng.Chk.			
Drawn	EIK	06/10	Coordination		
Dwg.Chk.	ELK	06/10	Approved	CJF	06/10
Scale	N.T.S.	Project	CAD File		Status
Drawing No.					Rev

© COPYRIGHT RESERVED

Figure 6.2.14





Rev	Date	Drawn/Description	Ch'k'd/App'd



Project
CONSULTANCY AGREEMENT NO. NEX/2301
SOUTH ISLAND LINE (EAST)
ENVIRONMENTAL IMPACT ASSESSMENT

Title
Landscape Resources Photographs
Sheet 2 of 5

Designed	EIK	06/10	Coordination		
Dwg.Chk.	ELK	06/10	Approved	CJF	06/10
Scale	N.T.S.	Project	CAD File		Status
Drawing No.					Rev



© COPYRIGHT RESERVED

Figure 6.2.15



Rev	Date	Drawn/Description	Chk'd/App'd

Client



Mott MacDonald Hong Kong Ltd
 7th Floor
 West Wing Office Building
 New World Centre
 20 Salisbury Road
 Tsim Sha Tsui, Kowloon
 Hong Kong
 Tel: 2825 5757
 Fax: 2827 1825
 Web: www.mottmac.com.hk

Project
CONSULTANCY AGREEMENT NO. NEX/2301
SOUTH ISLAND LINE (EAST)
ENVIRONMENTAL IMPACT ASSESSMENT

Title
Landscape Resources Photographs
Sheet 3 of 5

Designed	Drawn	Dwg.Chk.	Scale	Project	Status
	EIK	ELK	N.T.S.		
	06/10	06/10		CAD File	

Drawing No.	Rev

ADI
 COPYRIGHT RESERVED

Figure 6.2.16



Rev	Date	Drawn/Description	Ch'kd/App'd



Project
CONSULTANCY AGREEMENT NO. NEX/2301
SOUTH ISLAND LINE (EAST)
ENVIRONMENTAL IMPACT ASSESSMENT

Title
Landscape Resources Photographs
Sheet 4 of 5

Designed	Drawn	Dwg.Chk.	Scale	Project	CAD File	Status

Drawn	Dwg.Chk.	Scale	Project	CAD File	Status

Drawing No.	Rev



© COPYRIGHT RESERVED

Figure 6.2.17

Registered OVTs Record



LCSD CW/115 *Ficus Microcarpa*
 Located at Supreme Court Road



LCSD CW/116 *Ficus Microcarpa*
 Located at Supreme Court Road



LCSD CW/117 *Ficus Microcarpa*
 Located at Supreme Court Road



LCSD S/8 *Ficus Elastica*
 Located at Wong Chuk Hang Road Garden



LCSD S/9 *Albizia Saman*
 Located at roadside to the south of Wong Chuk Hang San Tsuen

Rev	Date	Drawn/Description	Ch'kd/App'd
Client			
			
 <div style="font-size: small; margin-left: 10px;"> Mott MacDonald Hong Kong Ltd 7th Floor West Wing Office Building New World Centre 20 Salisbury Road Tsim Sha Tsui, Kowloon Hong Kong Tel: 2825 5757 Fax: 2827 1823 Web: www.mottmac.com.hk </div>			
Project			
CONSULTANCY AGREEMENT NO. NEX/2301 SOUTH ISLAND LINE (EAST) ENVIRONMENTAL IMPACT ASSESSMENT			
Title			
Landscape Resources Photographs Sheet 5 of 5			
Designed		Eng.Chk.	
Drawn	06/10	Coordination	
Dwg.Chk.	06/10	Approved	06/10
Scale	Project		Status
	CAD File		
Drawing No.	Figure 6.2.18		Rev

