

### Legend

- Proposed SIL(E) Alignment
- 100M Study Boundary for Landscape Impact Assessment
- Proposed SIL(E) Station
- Proposed Works Site (Ground Level and Underground)
- Proposed Works Site (Underground)
- Proposed Works Area (Ground Level)
- LR3.1** Landscape Resources Sub-group
  - LR1 Major Road and Highway
  - LR2 Developed Area
  - LR3 Natural Woodland
  - LR4 Mixed Woodland
  - LR5 Roadside Amenity
  - LR6 Grassland/Shrubland Mosaic
  - LR7 Waterbody
  - LR8 Modified Watercourse
  - LR9 Marshland
  - LR10 Waste Land / Open Field
  - LR11 Agricultural Land
  - LR12 Open Space

Note:  
Only affect cut area show in colours.

Rev	Date	Drawn/Description	Cr'd/App'd



Project  
**CONSULTANCY AGREEMENT NO. NEX/2301**  
**SOUTH ISLAND LINE (EAST)**  
**ENVIRONMENTAL IMPACT ASSESSMENT**

Title  
**Impact on Landscape Resources**  
Sheet 1 of 13

Designed	Eng.Chk.			
Drawn	EIK	06/10	Coordination	
Dwg.Chk.	ELK	06/10	Approved	CJF 06/10
Scale	As Shown	Project		Status
		CAD File		
Drawing No.				Rev

	Landscape Impact		
	Construction	Operation	
Unmitigated	Significant Adverse	Moderate Adverse	Slight Adverse
Mitigated	Slight Beneficial	Negligible (Year 10)	

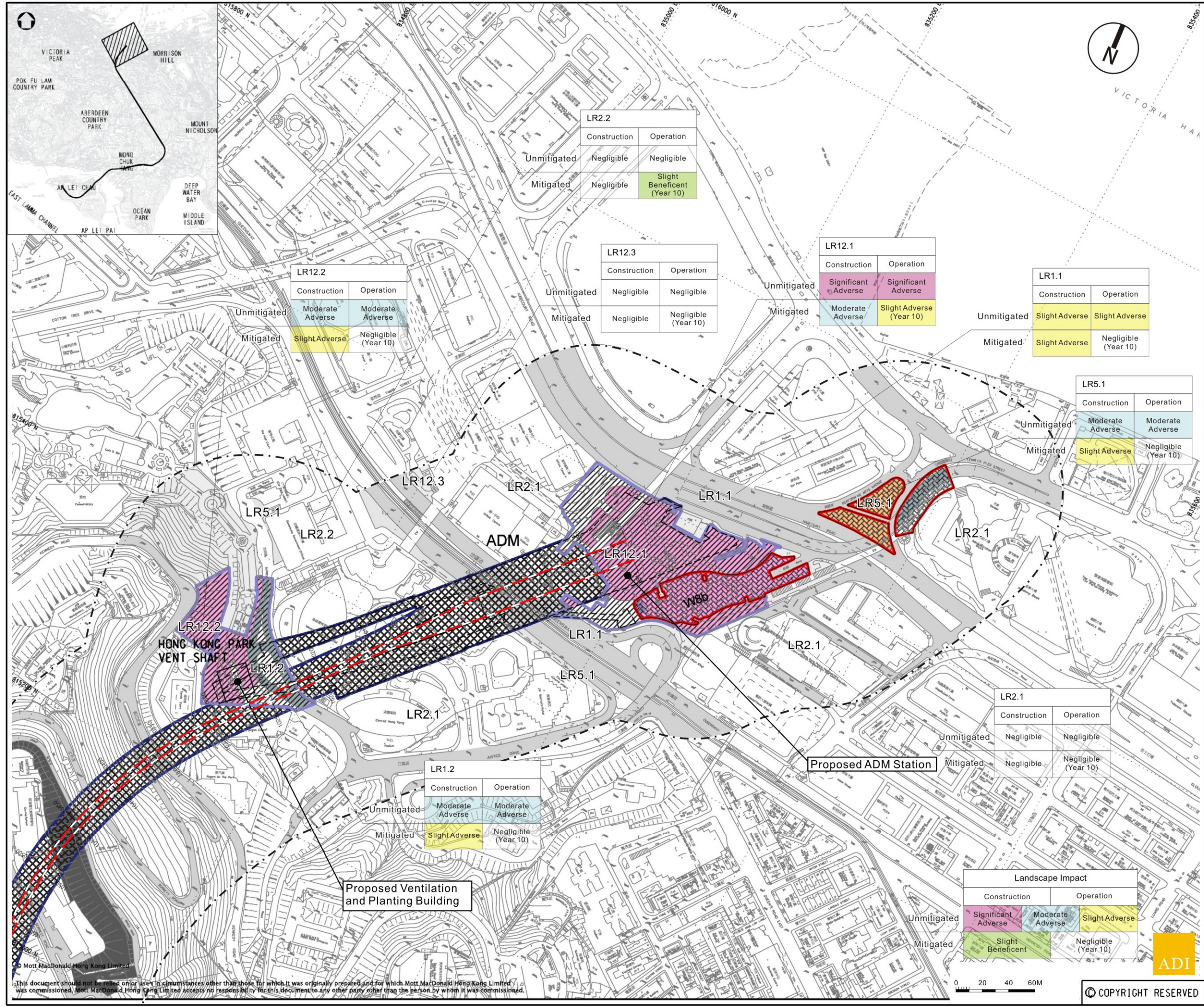


© COPYRIGHT RESERVED

Figure 6.5.1

© Mott MacDonald Hong Kong Limited  
This document should not be relied on or used in circumstances other than those for which it was originally prepared and for which Mott MacDonald Hong Kong Limited was commissioned. Mott MacDonald Hong Kong Limited accepts no responsibility for this document to any other party other than the person by whom it was commissioned.





### Legend

- Proposed SIL(E) Alignment
- 100M Study Boundary for Landscape Impact Assessment
- Proposed SIL(E) Station
- Proposed Works Site (Ground Level and Underground)
- Proposed Works Site (Underground)
- Proposed Works Area (Ground Level)
- LR3.1** Landscape Resources Sub-group
  - LR1 Major Road and Highway
  - LR2 Developed Area
  - LR3 Natural Woodland
  - LR4 Mixed Woodland
  - LR5 Roadside Amenity
  - LR6 Grassland/Shrubland Mosaic
  - LR7 Waterbody
  - LR8 Modified Watercourse
  - LR9 Marshland
  - LR10 Waste Land / Open Field
  - LR11 Agricultural Land
  - LR12 Open Space

Note:  
Only affect cut area show in colours.

Rev	Date	Drawn/Description	Cr'd/App'd

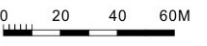


Project  
**CONSULTANCY AGREEMENT NO. NEX/2301  
SOUTH ISLAND LINE (EAST)  
ENVIRONMENTAL IMPACT ASSESSMENT**

Title  
**Impact on Landscape Resources  
Sheet 2 of 13**

Designed	Eng.Chk.			
Drawn	EIK	06/10	Coordination	
Dwg.Chk.	ELK	06/10	Approved	CJF 06/10
Scale	As Shown	Project	CAD File	Status
Drawing No.				Rev

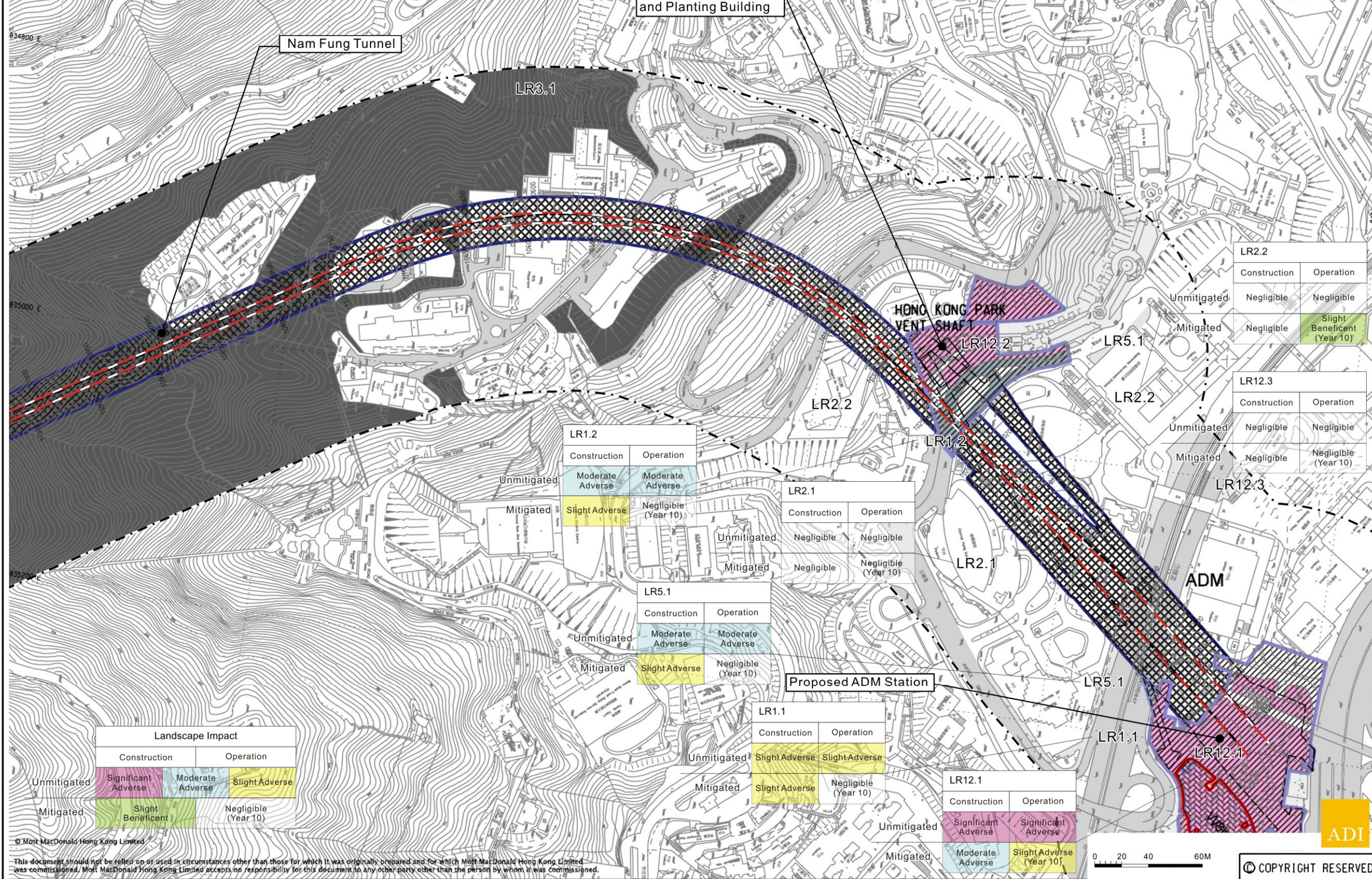
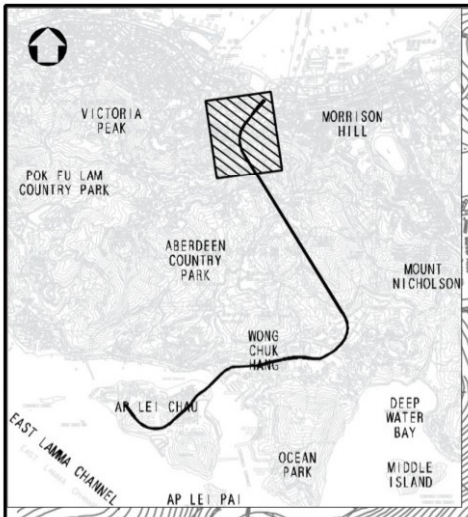
This document should not be relied on or used in circumstances other than those for which it was originally prepared and for which Mott MacDonald Hong Kong Limited was commissioned. Mott MacDonald Hong Kong Limited accepts no responsibility for this document to any other party other than the person by whom it was commissioned.



© COPYRIGHT RESERVED

Figure 6.5.2





### Legend

- Proposed SIL(E) Alignment
- 100M Study Boundary for Landscape Impact Assessment
- Proposed SIL(E) Station
- Proposed Works Site (Ground Level and Underground)
- Proposed Works Site (Underground)
- Proposed Works Area (Ground Level)

#### LR3.1 Landscape Resources Sub-group

- LR1 Major Road and Highway
- LR2 Developed Area
- LR3 Natural Woodland
- LR4 Mixed Woodland
- LR5 Roadside Amenity
- LR6 Grassland/Shrubland Mosaic
- LR7 Waterbody
- LR8 Modified Watercourse
- LR9 Marshland
- LR10 Waste Land / Open Field
- LR11 Agricultural Land
- LR12 Open Space

Note:  
Only affect cut area show in colours.

Rev	Date	Drawn/Description	Ch'kd/App'd



Project  
**CONSULTANCY AGREEMENT NO. NEX/2301  
SOUTH ISLAND LINE (EAST)  
ENVIRONMENTAL IMPACT ASSESSMENT**

Title  
**Impact on Landscape Resources  
Sheet 3 of 13**

Designed	Eng.Chk.			
Drawn	EIK	06/10	Coordination	
Dwg.Chk.	ELK	06/10	Approved	CJF 06/10
Scale	As Shown	Project	CAD File	Status
Drawing No.				Rev

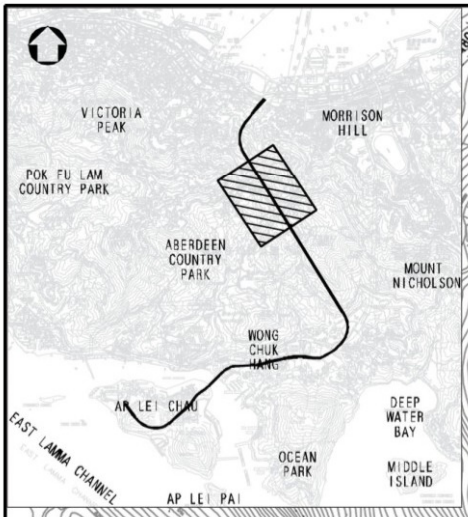
Landscape Impact			
Construction	Operation		
Unmitigated	Significant Adverse	Moderate Adverse	Slight Adverse
Mitigated	Slight Beneficial	Negligible (Year 10)	

© Mott MacDonald Hong Kong Limited  
This document should not be relied on or used in circumstances other than those for which it was originally prepared and for which Mott MacDonald Hong Kong Limited was commissioned. Mott MacDonald Hong Kong Limited accepts no responsibility for this document to any other party other than the person by whom it was commissioned.

ADI  
COPYRIGHT RESERVED

Figure 6.5.3





- ### Legend
- Proposed SIL(E) Alignment
  - 100M Study Boundary for Landscape Impact Assessment
  - Proposed SIL(E) Station
  - Proposed Works Site (Ground Level and Underground)
  - Proposed Works Site (Underground)
  - Proposed Works Area (Ground Level)
  - LR3.1** Landscape Resources Sub-group
  - LR1 Major Road and Highway
  - LR2 Developed Area
  - LR3 Natural Woodland
  - LR4 Mixed Woodland
  - LR5 Roadside Amenity
  - LR6 Grassland/Shrubland Mosaic
  - LR7 Waterbody
  - LR8 Modified Watercourse
  - LR9 Marshland
  - LR10 Waste Land / Open Field
  - LR11 Agricultural Land
  - LR12 Open Space

Note:  
Only affect cut area show in colours.

Rev	Date	Drawn/Description	Ch'kd/App'd

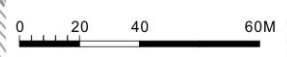


Project  
**CONSULTANCY AGREEMENT NO. NEX/2301**  
**SOUTH ISLAND LINE (EAST)**  
**ENVIRONMENTAL IMPACT ASSESSMENT**

Title  
**Impact on Landscape Resources**  
Sheet 4 of 13

Designed	Drawn	Dwg.Chk.	Scale	Project	Drawing No.	Eng.Chk.	Status	Rev
EIK	ELK	ELK	As Shown	CAD File	Figure 6.5.4	Coordination	Approved	06/10
						CJF		

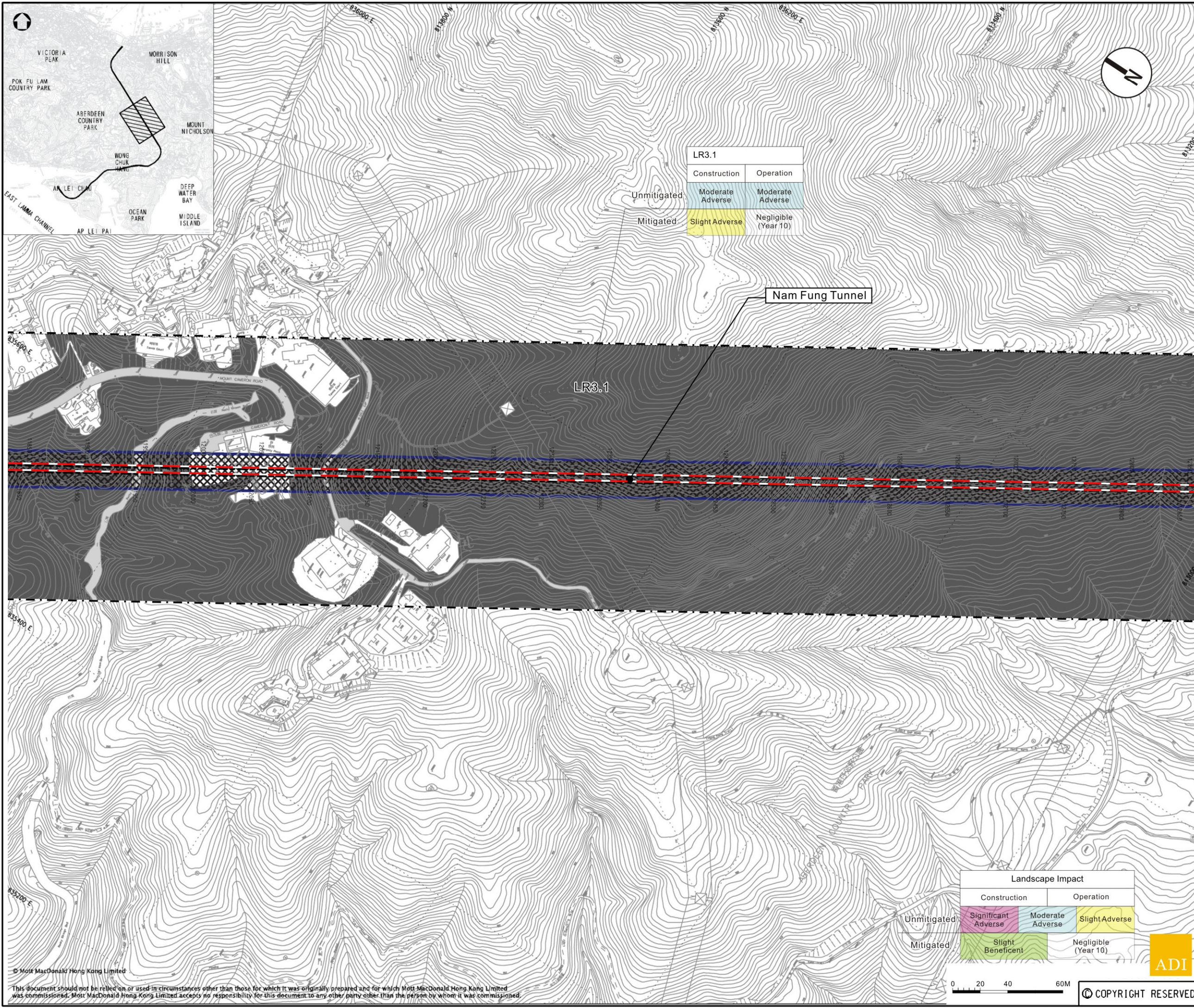
Landscape Impact		
	Construction	Operation
Unmitigated	Significant Adverse	Moderate Adverse
Mitigated	Slight Beneficial	Negligible (Year 10)



© COPYRIGHT RESERVED

© Mott MacDonald Hong Kong Limited  
This document should not be relied on or used in circumstances other than those for which it was originally prepared and for which Mott MacDonald Hong Kong Limited was commissioned. Mott MacDonald Hong Kong Limited accepts no responsibility for this document to any other party other than the person by whom it was commissioned.





LR3.1	
Construction	Operation
Unmitigated	Moderate Adverse
Mitigated	Negligible (Year 10)

Nam Fung Tunnel

LR3.1

Landscape Impact		
	Construction	Operation
Unmitigated	Significant Adverse	Moderate Adverse
Mitigated	Slight Beneficial	Negligible (Year 10)

- Legend**
- Proposed SIL(E) Alignment
  - 100M Study Boundary for Landscape Impact Assessment
  - Proposed SIL(E) Station
  - Proposed Works Site (Ground Level and Underground)
  - Proposed Works Site (Underground)
  - Proposed Works Area (Ground Level)
  - LR3.1** Landscape Resources Sub-group
    - LR1 Major Road and Highway
    - LR2 Developed Area
    - LR3 Natural Woodland
    - LR4 Mixed Woodland
    - LR5 Roadside Amenity
    - LR6 Grassland/Shrubland Mosaic
    - LR7 Waterbody
    - LR8 Modified Watercourse
    - LR9 Marshland
    - LR10 Waste Land / Open Field
    - LR11 Agricultural Land
    - LR12 Open Space

Note:  
Only affect cut area show in colours.

Rev	Date	Drawn/Description	Ch'kd/App'd
Client			

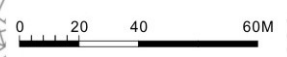


**Mott MacDonald**  
 Mott MacDonald Hong Kong Ltd  
 7th Floor  
 West Wing Office Building  
 New World Centre  
 20 Salisbury Road  
 Tsim Sha Tsui, Kowloon  
 Hong Kong  
 Tel: 2828 5757  
 Fax: 2827 1825  
 Web: www.mottmac.com.hk

Project  
**CONSULTANCY AGREEMENT NO. NEX/2301**  
**SOUTH ISLAND LINE (EAST)**  
**ENVIRONMENTAL IMPACT ASSESSMENT**

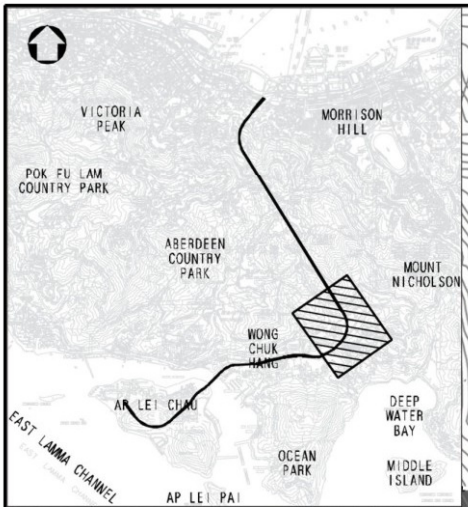
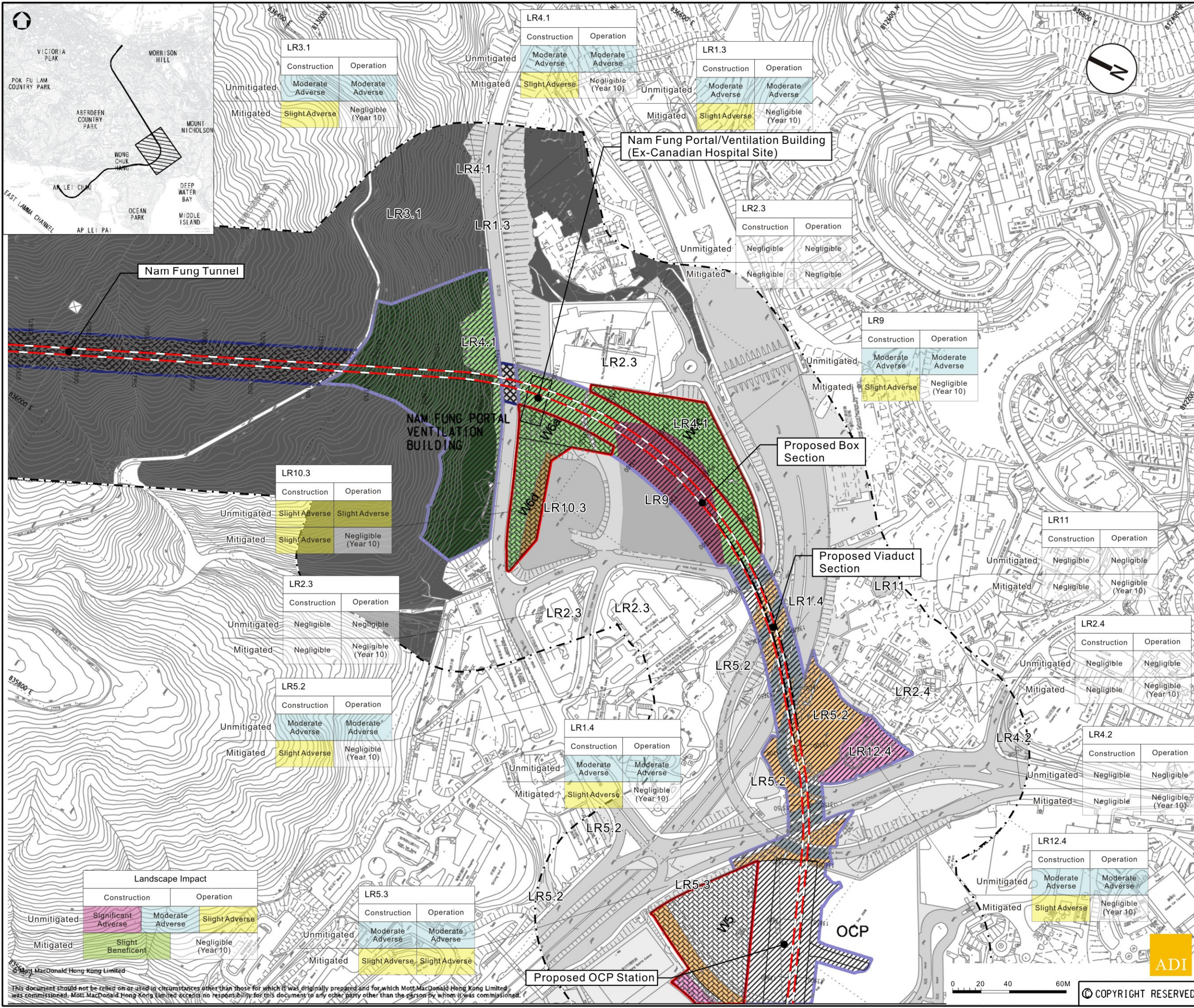
Title  
**Impact on Landscape Resources**  
**Sheet 5 of 13**

Designed	EIK	06/10	Eng.Chk.		
Drawn	ELK	06/10	Coordination		
Dwg.Chk.	ELK	06/10	Approved	CJF	06/10
Scale	As Shown	Project	CAD File		Status
Drawing No.	Figure 6.5.5				Rev



**AD I**  
 COPYRIGHT RESERVED





### Legend

- Proposed SIL(E) Alignment
- 100M Study Boundary for Landscape Impact Assessment
- Proposed SIL(E) Station
- Proposed Works Site (Ground Level and Underground)
- Proposed Works Site (Underground)
- Proposed Works Area (Ground Level)

#### LR3.1 Landscape Resources Sub-group

- LR1 Major Road and Highway
- LR2 Developed Area
- LR3 Natural Woodland
- LR4 Mixed Woodland
- LR5 Roadside Amenity
- LR6 Grassland/Shrubland Mosaic
- LR7 Waterbody
- LR8 Modified Watercourse
- LR9 Marshland
- LR10 Waste Land / Open Field
- LR11 Agricultural Land
- LR12 Open Space

Note:  
Only affect cut area show in colours.

Rev	Date	Drawn/Description	Ch'kd/App'd



Project  
**CONSULTANCY AGREEMENT NO. NEX/2301  
SOUTH ISLAND LINE (EAST)  
ENVIRONMENTAL IMPACT ASSESSMENT**

Title  
**Impact on Landscape Resources  
Sheet 6 of 13**

Designed	Eng.Chk.			
Drawn	EIK	06/10	Coordination	
Dwg.Chk.	ELK	06/10	Approved	CJF 06/10
Scale	As Shown	Project		Status
		CAD File		
Drawing No.				Rev

Figure 6.5.6

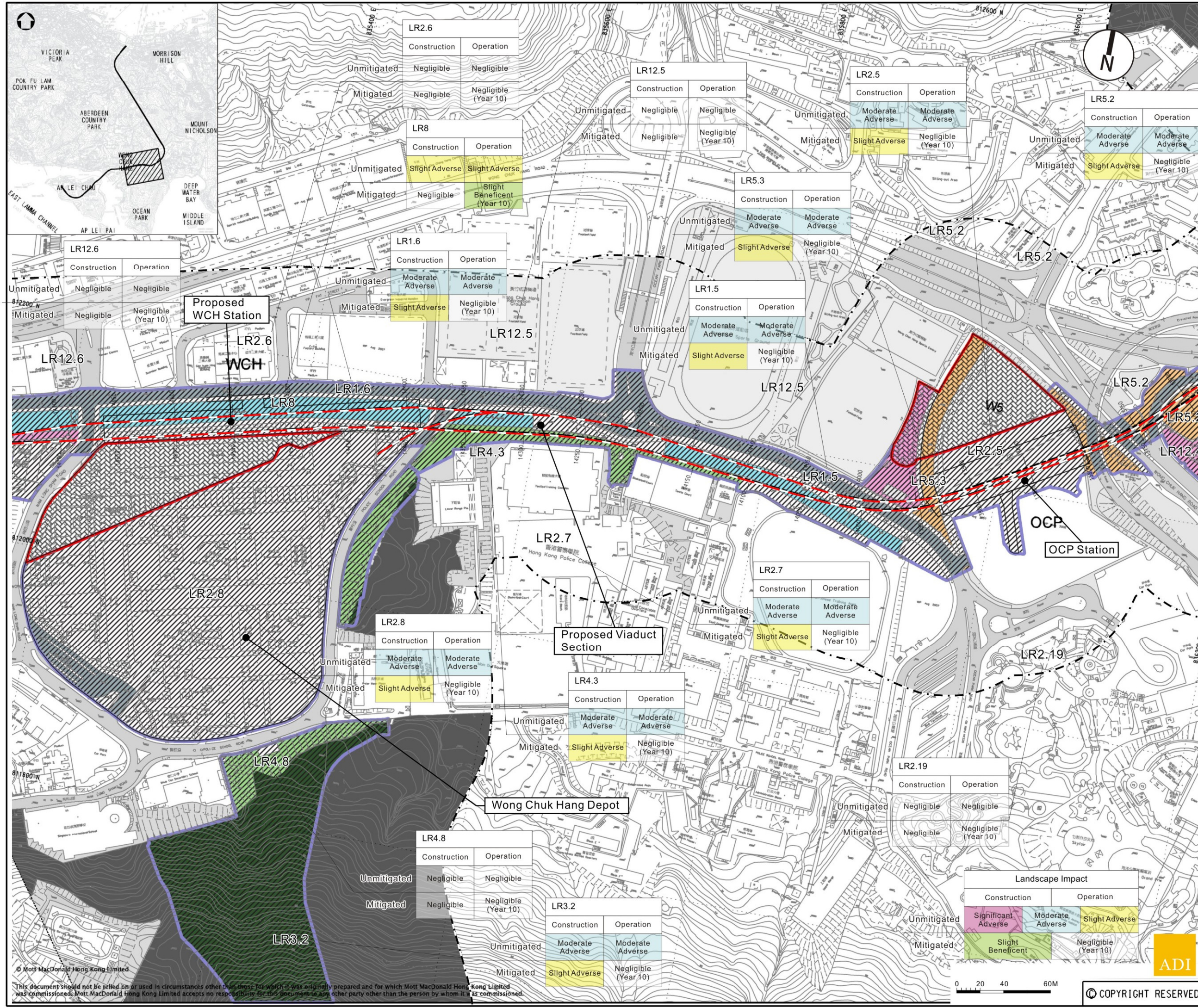
#### Landscape Impact

	Construction	Operation	
Unmitigated	Significant Adverse	Moderate Adverse	Slight Adverse
Mitigated	Slight Beneficial	Negligible (Year 10)	

This document should not be relied on or used in circumstances other than those for which it was originally prepared and for which Mott MacDonald Hong Kong Limited was commissioned. Mott MacDonald Hong Kong Limited accepts no responsibility for this document to any other party other than the person by whom it was commissioned.

© COPYRIGHT RESERVED





### Legend

- Proposed SIL(E) Alignment
- 100M Study Boundary for Landscape Impact Assessment
- Proposed SIL(E) Station
- Proposed Works Site (Ground Level and Underground)
- Proposed Works Site (Underground)
- Proposed Works Area (Ground Level)

#### LR3.1 Landscape Resources Sub-group

- LR1 Major Road and Highway
- LR2 Developed Area
- LR3 Natural Woodland
- LR4 Mixed Woodland
- LR5 Roadside Amenity
- LR6 Grassland/Shrubland Mosaic
- LR7 Waterbody
- LR8 Modified Watercourse
- LR9 Marshland
- LR10 Waste Land / Open Field
- LR11 Agricultural Land
- LR12 Open Space

Note:  
Only affect cut area show in colours.

Rev	Date	Drawn/Description	Cr'd/App'd



Project  
**CONSULTANCY AGREEMENT NO. NEX/2301**  
**SOUTH ISLAND LINE (EAST)**  
**ENVIRONMENTAL IMPACT ASSESSMENT**

Title  
**Impact on Landscape Resources**  
Sheet 7 of 13

Designed	Eng.Chk.			
Drawn	EIK	06/10	Coordination	
Dwg.Chk.	ELK	06/10	Approved	CJF 06/10
Scale	As Shown	Project		Status
		CAD File		
Drawing No.				Rev

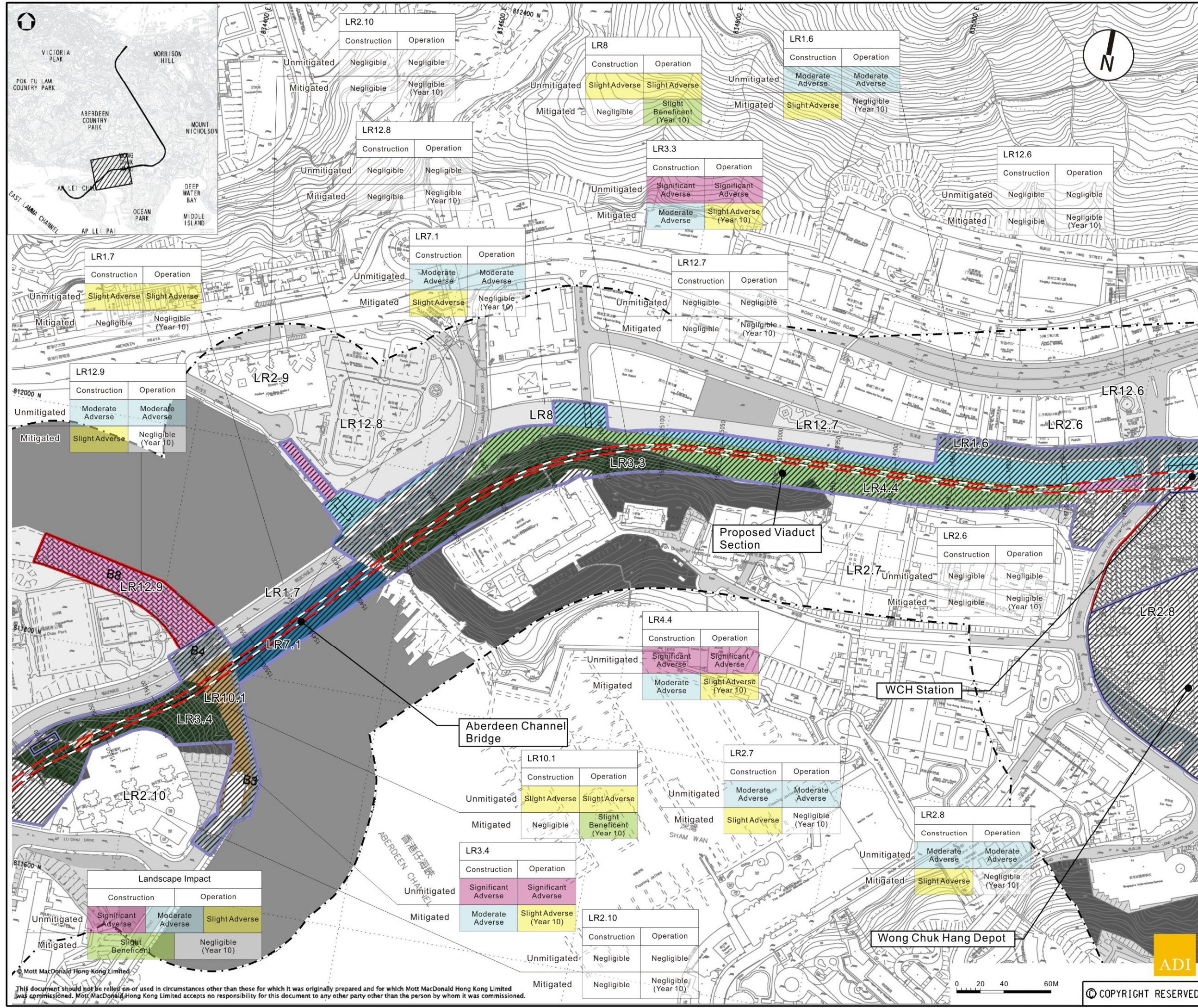
Landscape Impact		
	Construction	Operation
Unmitigated	Significant Adverse	Moderate Adverse
Mitigated	Slight Beneficial	Negligible (Year 10)



© COPYRIGHT RESERVED

This document should not be relied on or used in circumstances other than those for which it was originally prepared and for which Mott MacDonald Hong Kong Limited was commissioned. Mott MacDonald Hong Kong Limited accepts no responsibility for this document to any other party other than the person by whom it was commissioned.





### Legend

- Proposed SIL(E) Alignment
- 100M Study Boundary for Landscape Impact Assessment
- Proposed SIL(E) Station
- Proposed Works Site (Ground Level and Underground)
- Proposed Works Site (Underground)
- Proposed Works Area (Ground Level)

### LR3.1 Landscape Resources Sub-group

- LR1 Major Road and Highway
- LR2 Developed Area
- LR3 Natural Woodland
- LR4 Mixed Woodland
- LR5 Roadside Amenity
- LR6 Grassland/Shrubland Mosaic
- LR7 Waterbody
- LR8 Modified Watercourse
- LR9 Marshland
- LR10 Waste Land / Open Field
- LR11 Agricultural Land
- LR12 Open Space

Note:  
Only affect cut area show in colours.

Rev	Date	Drawn/Description	Cr'd/App'd



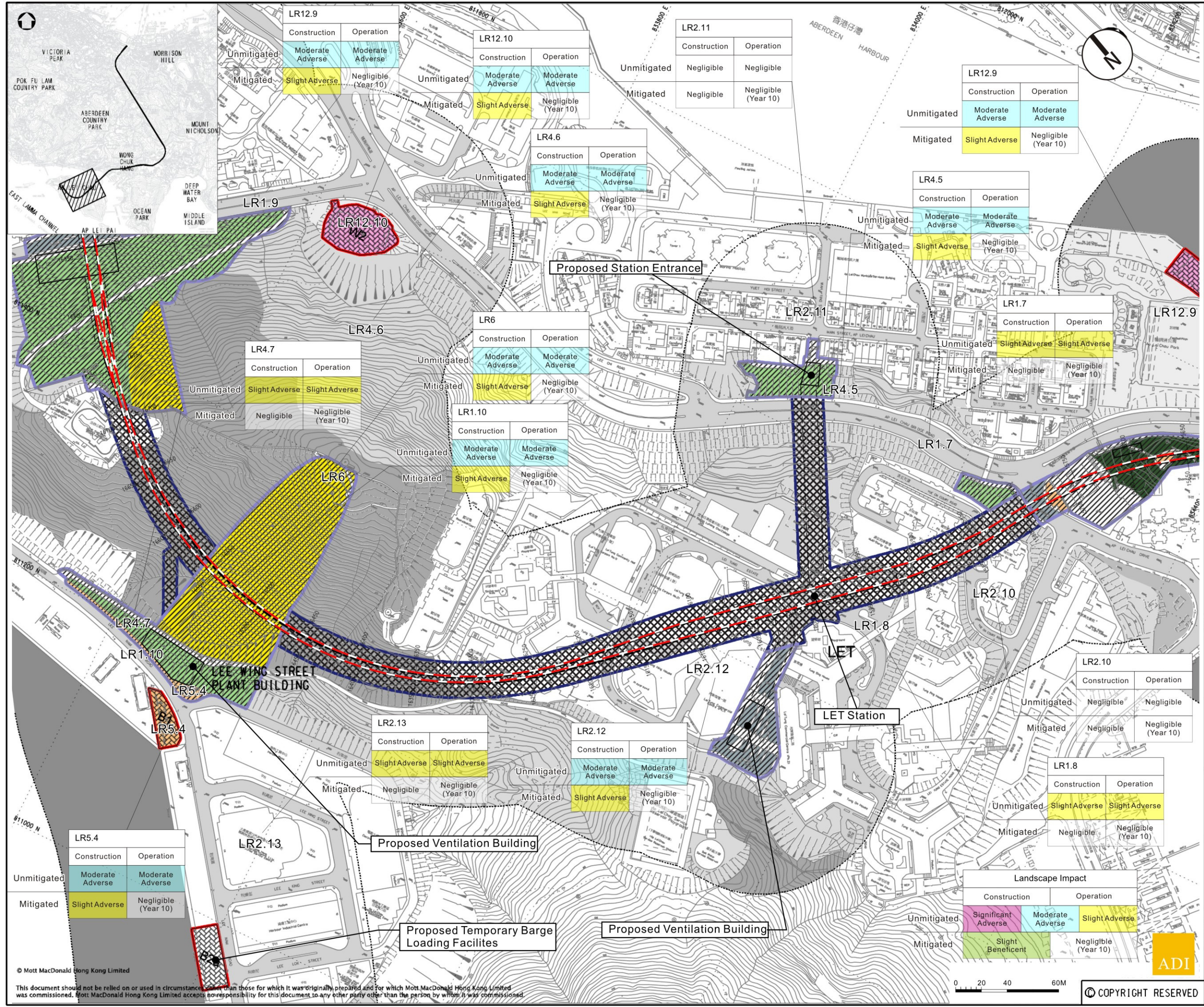
Project  
**CONSULTANCY AGREEMENT NO. NEX/2301  
SOUTH ISLAND LINE (EAST)  
ENVIRONMENTAL IMPACT ASSESSMENT**

Title  
**Impact on Landscape Resources  
Sheet 8 of 13**

Designed	Eng.Chk.	Drawn	Coordination	Dwg.Chk.	Approved	CJF	06/10	Scale	Project	Status
		EIK	06/10	ELK	06/10	CJF	06/10	As Shown	CAD File	

This document should not be relied on or used in circumstances other than those for which it was originally prepared and for which Mott MacDonald Hong Kong Limited was commissioned. Mott MacDonald Hong Kong Limited accepts no responsibility for this document to any other party other than the person by whom it was commissioned.





### Legend

- Proposed SIL(E) Alignment
- 100M Study Boundary for Landscape Impact Assessment
- Proposed SIL(E) Station
- Proposed Works Site (Ground Level and Underground)
- Proposed Works Site (Underground)
- Proposed Works Area (Ground Level)
- LR3.1 Landscape Resources Sub-group
- LR1 LR1 Major Road and Highway
- LR2 LR2 Developed Area
- LR3 LR3 Natural Woodland
- LR4 LR4 Mixed Woodland
- LR5 LR5 Roadside Amenity
- LR6 LR6 Grassland/Shrubland Mosaic
- LR7 LR7 Waterbody
- LR8 LR8 Modified Watercourse
- LR9 LR9 Marshland
- LR10 LR10 Waste Land / Open Field
- LR11 LR11 Agricultural Land
- LR12 LR12 Open Space

Note:  
Only affect cut area show in colours.

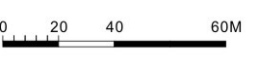
Rev	Date	Drawn	Description	Ch'kd	App'd



Project  
**CONSULTANCY AGREEMENT NO. NEX/2301**  
**SOUTH ISLAND LINE (EAST)**  
**ENVIRONMENTAL IMPACT ASSESSMENT**

Title  
**Impact on Landscape Resources**  
Sheet 9 of 13

Designed	EIK	07/10	Eng.Chk.	Coordination	
Drawn	EIK	07/10	Approved	CJF	07/10
Dwg.Chk.	ELK	07/10			
Scale	As Shown	Project			Status
		CAD File			
Drawing No.					Rev



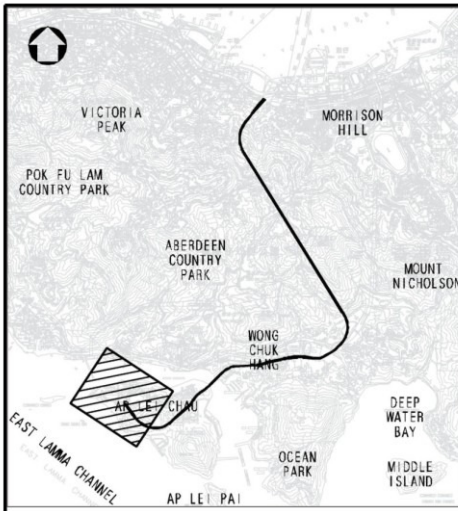
© COPYRIGHT RESERVED



© Mott MacDonald Hong Kong Limited  
This document should not be relied on or used in circumstances other than those for which it was originally prepared and for which Mott MacDonald Hong Kong Limited was commissioned. Mott MacDonald Hong Kong Limited accepts no responsibility for this document to any other party other than the person by whom it was commissioned.

Figure 6.5.9





### Legend

- Proposed SIL(E) Alignment
- 100M Study Boundary for Landscape Impact Assessment
- Proposed SIL(E) Station
- Proposed Works Site (Ground Level and Underground)
- Proposed Works Site (Underground)
- Proposed Works Area (Ground Level)

### LR3.1 Landscape Resources Sub-group

- LR1 Major Road and Highway
- LR2 Developed Area
- LR3 Natural Woodland
- LR4 Mixed Woodland
- LR5 Roadside Amenity
- LR6 Grassland/Shrubland Mosaic
- LR7 Waterbody
- LR8 Modified Watercourse
- LR9 Marshland
- LR10 Waste Land / Open Field
- LR11 Agricultural Land
- LR12 Open Space

Note: Only affect cut area show in colours.

Rev	Date	Drawn/Description	Ch'kd/App'd



Project  
**CONSULTANCY AGREEMENT NO. NEX/2301**  
**SOUTH ISLAND LINE (EAST)**  
**ENVIRONMENTAL IMPACT ASSESSMENT**

Title  
**Impact on Landscape Resources**  
**Sheet 10 of 13**

Designed	Eng.Chk.	Coordination	Approved	CJF	07/10
Drawn	EIK	07/10	Approved	CJF	07/10
Dwg.Chk.	ELK	07/10	Approved	CJF	07/10
Scale	As Shown	Project	CAD File	Status	
Drawing No.					

Landscape Impact		
	Construction	Operation
Unmitigated	Significant Adverse	Moderate Adverse
Mitigated	Slight Beneficial	Negligible (Year 10)

LR2.14		
	Construction	Operation
Unmitigated	Moderate Adverse	Moderate Adverse
Mitigated	Slight Adverse	Negligible (Year 10)

LR12.10		
	Construction	Operation
Unmitigated	Moderate Adverse	Moderate Adverse
Mitigated	Slight Adverse	Negligible (Year 10)

LR4.6		
	Construction	Operation
Unmitigated	Moderate Adverse	Moderate Adverse
Mitigated	Slight Adverse	Negligible (Year 10)

LR6		
	Construction	Operation
Unmitigated	Moderate Adverse	Moderate Adverse
Mitigated	Slight Adverse	Negligible (Year 10)

LR4.8		
	Construction	Operation
Unmitigated	Negligible	Negligible
Mitigated	Negligible	Negligible (Year 10)

LR4.7		
	Construction	Operation
Unmitigated	Slight Adverse	Slight Adverse
Mitigated	Negligible	Negligible (Year 10)

LR2.13		
	Construction	Operation
Unmitigated	Slight Adverse	Slight Adverse
Mitigated	Negligible	Negligible (Year 10)

LR1.10		
	Construction	Operation
Unmitigated	Moderate Adverse	Moderate Adverse
Mitigated	Slight Adverse	Negligible (Year 10)





### Legend

- Proposed SIL(E) Alignment
- 100M Study Boundary for Landscape Impact Assessment
- Proposed SIL(E) Station
- Proposed Works Site (Ground Level and Underground)
- Proposed Works Site (Underground)
- Proposed Works Area (Ground Level)

#### LR3.1 Landscape Resources Sub-group

- LR1 Major Road and Highway
- LR2 Developed Area
- LR3 Natural Woodland
- LR4 Mixed Woodland
- LR5 Roadside Amenity
- LR6 Grassland/Shrubland Mosaic
- LR7 Waterbody
- LR8 Modified Watercourse
- LR9 Marshland
- LR10 Waste Land / Open Field
- LR11 Agricultural Land
- LR12 Open Space

Note:  
Only affect cut area show in colours.

Rev	Date	Drawn/Description	Ch'kd/App'd



Project  
**CONSULTANCY AGREEMENT NO. NEX/2301  
SOUTH ISLAND LINE (EAST)  
ENVIRONMENTAL IMPACT ASSESSMENT**

Title  
**Impact on Landscape Resources  
Sheet 11 of 13**

Designed	Eng.Chk.			
Drawn	EIK	06/10	Coordination	
Dwg.Chk.	ELK	06/10	Approved	CJF 06/10
Scale	As Shown	Project	CAD File	Status
Drawing No.				Rev

Landscape Impact	Construction		Operation	
	Unmitigated	Significant Adverse	Moderate Adverse	Slight Adverse
Mitigated	Slight Beneficial		Negligible (Year 10)	

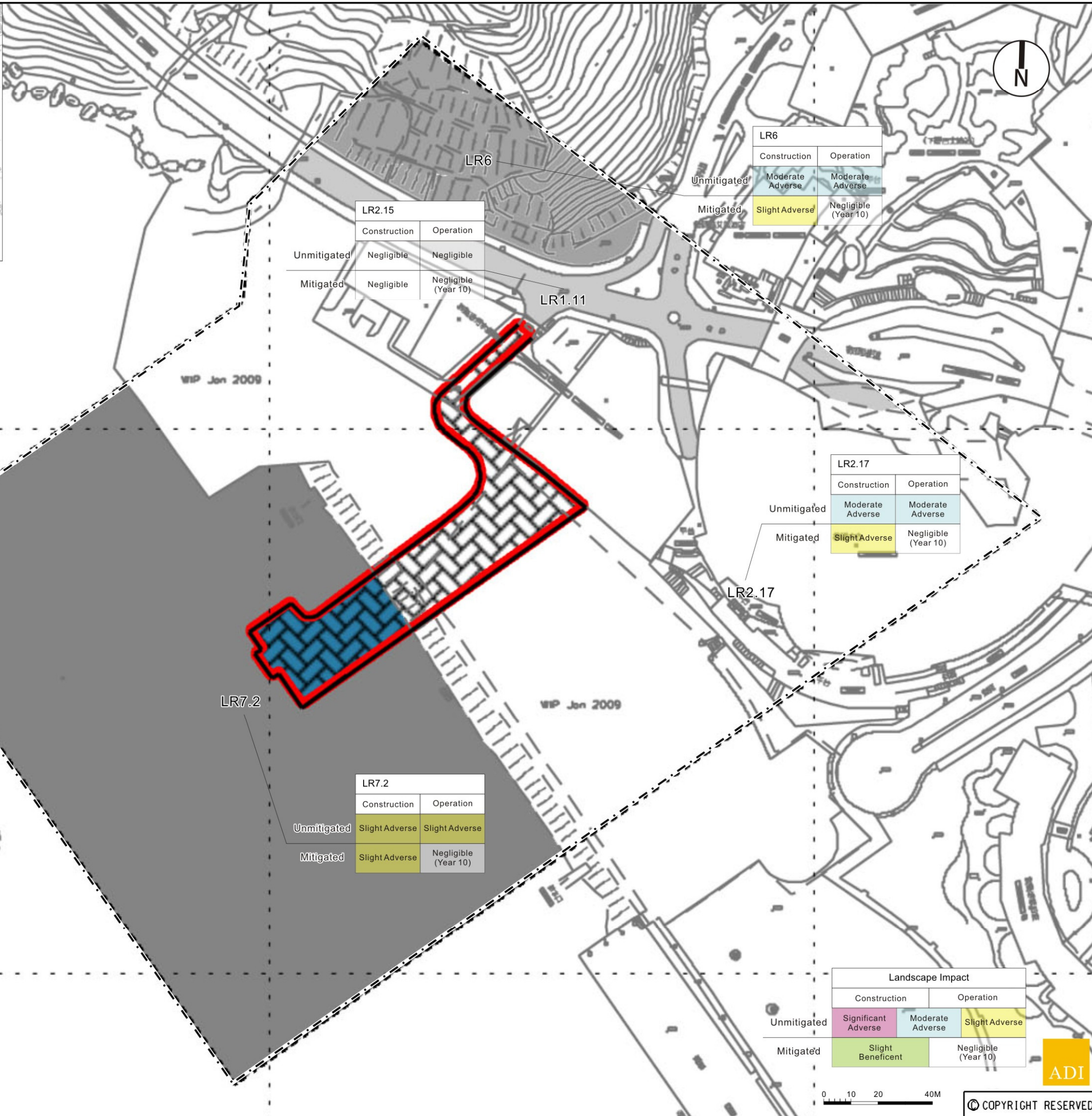
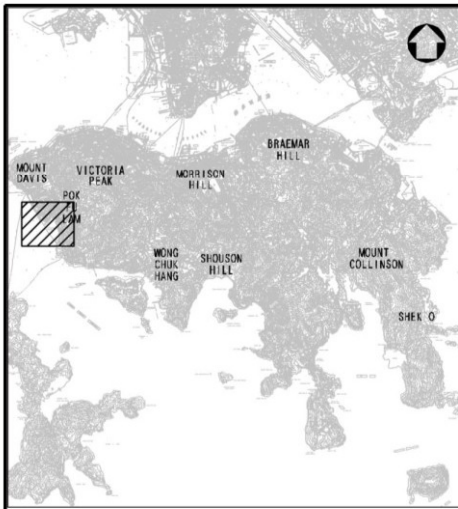
ADI

0 40 80 120M

© COPYRIGHT RESERVED

Figure 6.5.11





LR2.15		
	Construction	Operation
Unmitigated	Negligible	Negligible
Mitigated	Negligible	Negligible (Year 10)

LR6		
	Construction	Operation
Unmitigated	Moderate Adverse	Moderate Adverse
Mitigated	Slight Adverse	Negligible (Year 10)

LR2.17		
	Construction	Operation
Unmitigated	Moderate Adverse	Moderate Adverse
Mitigated	Slight Adverse	Negligible (Year 10)

LR7.2		
	Construction	Operation
Unmitigated	Slight Adverse	Slight Adverse
Mitigated	Slight Adverse	Negligible (Year 10)

Landscape Impact			
	Construction		Operation
Unmitigated	Significant Adverse	Moderate Adverse	Slight Adverse
Mitigated	Slight Beneficial		Negligible (Year 10)

- Legend**
- Proposed SIL(E) Alignment
  - 100M Study Boundary for Landscape Impact Assessment
  - Proposed SIL(E) Station
  - Proposed Works Site (Ground Level and Underground)
  - Proposed Works Site (Underground)
  - Proposed Works Area (Ground Level)
  - LR3.1 Landscape Resources Sub-group
  - LR1 LR1 Major Road and Highway
  - LR2 LR2 Developed Area
  - LR3 LR3 Natural Woodland
  - LR4 LR4 Mixed Woodland
  - LR5 LR5 Roadside Amenity
  - LR6 LR6 Grassland/Shrubland Mosaic
  - LR7 LR7 Waterbody
  - LR8 LR8 Modified Watercourse
  - LR9 LR9 Marshland
  - LR10 LR10 Waste Land / Open Field
  - LR11 LR11 Agricultural Land
  - LR12 LR12 Open Space

Note:  
Only affect cut area show in colours.

Rev	Date	Drawn/Description	Chk'd/App'd



Project  
**CONSULTANCY AGREEMENT NO. NEX/2301  
SOUTH ISLAND LINE (EAST)  
ENVIRONMENTAL IMPACT ASSESSMENT**

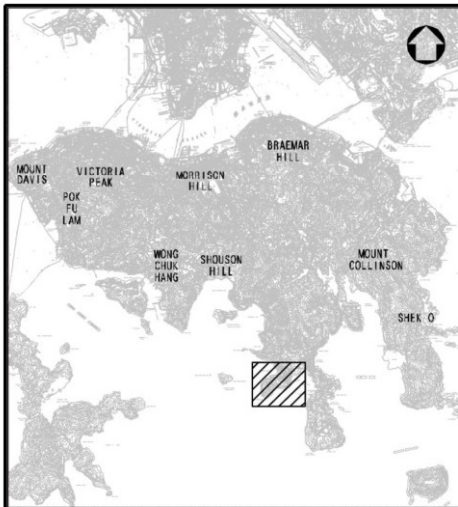
Title  
**Impact on Landscape Resources  
Sheet 12 of 13**

Designed		Eng.Chk.			
Drawn	EIK	06/10	Coordination		
Dwg.Chk.	ELK	06/10	Approved	CJF	06/10
Scale	As Shown	Project	CAD File		Status
Drawing No.					Rev

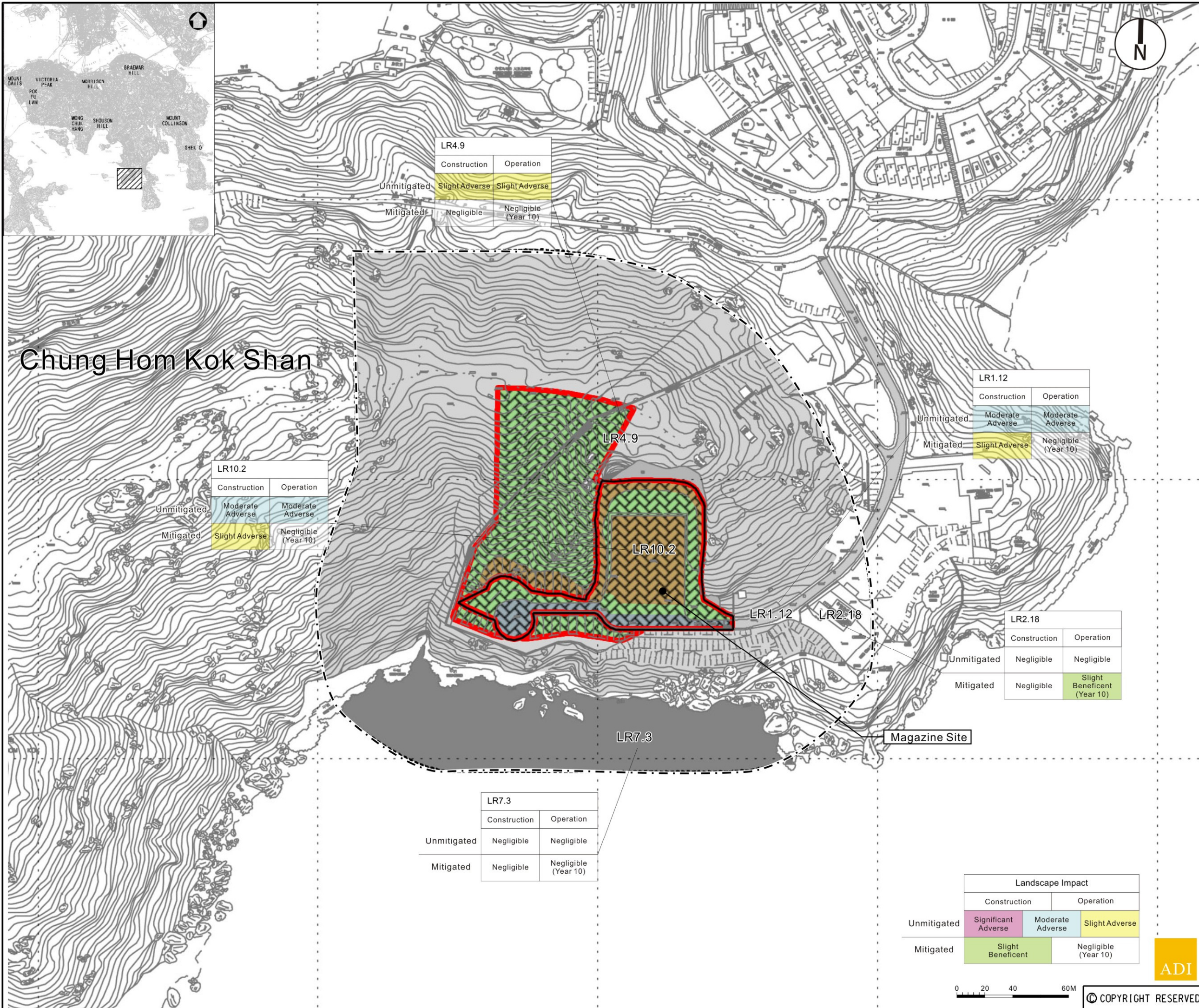
© COPYRIGHT RESERVED

Figure 6.5.12





# Chung Hom Kok Shan



LR4.9		
	Construction	Operation
Unmitigated	Slight Adverse	Slight Adverse
Mitigated	Negligible	Negligible (Year 10)

LR10.2		
	Construction	Operation
Unmitigated	Moderate Adverse	Moderate Adverse
Mitigated	Slight Adverse	Negligible (Year 10)

LR1.12		
	Construction	Operation
Unmitigated	Moderate Adverse	Moderate Adverse
Mitigated	Slight Adverse	Negligible (Year 10)

LR2.18		
	Construction	Operation
Unmitigated	Negligible	Negligible
Mitigated	Negligible	Slight Beneficent (Year 10)

LR7.3		
	Construction	Operation
Unmitigated	Negligible	Negligible
Mitigated	Negligible	Negligible (Year 10)

Landscape Impact			
	Construction		Operation
Unmitigated	Significant Adverse	Moderate Adverse	Slight Adverse
Mitigated	Slight Beneficent		Negligible (Year 10)

### Legend

- Proposed SIL(E) Alignment
- 100M Study Boundary for Landscape Impact Assessment
- Proposed SIL(E) Station
- Proposed Works Site (Ground Level and Underground)
- Proposed Works Site (Underground)
- Proposed Works Area (Ground Level)
- LR3.1 Landscape Resources Sub-group
- LR1 LR1 Major Road and Highway
- LR2 LR2 Developed Area
- LR3 LR3 Natural Woodland
- LR4 LR4 Mixed Woodland
- LR5 LR5 Roadside Amenity
- LR6 LR6 Grassland/Shrubland Mosaic
- LR7 LR7 Waterbody
- LR8 LR8 Modified Watercourse
- LR9 LR9 Marshland
- LR10 LR10 Waste Land / Open Field
- LR11 LR11 Agricultural Land
- LR12 LR12 Open Space

Note:  
Only affect cut area show in colours.

Rev	Date	Drawn/Description	Cr'd/App'd
-----	------	-------------------	------------



Project  
**CONSULTANCY AGREEMENT NO. NEX/2301**  
**SOUTH ISLAND LINE (EAST)**  
**ENVIRONMENTAL IMPACT ASSESSMENT**

Title  
**Impact on Landscape Resources**  
**Sheet 13 of 13**

Designed			Eng.Chk.		
Drawn	EIK	06/10	Coordination		
Dwg.Chk.	ELK	06/10	Approved	CJF	06/10
Scale	As Shown	Project	CAD File		Status
Drawing No.					Rev



© COPYRIGHT RESERVED

Figure 6.5.13