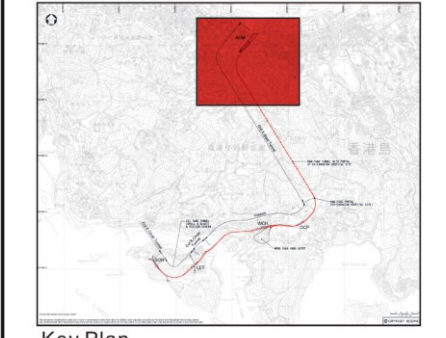


Legend

- Proposed SIL(E)
- 100M Study Boundary for Landscape Impact Assessment
- Proposed SIL(E) Station
- Proposed Works Site (Ground Level and Underground)
- Proposed Works Site
- Proposed Works Area
- Zone of Visual Influence
- Visually Sensitive Receiver (VSR) and Angle of Main View
- Photomontage



Key Plan

Visual Impact	Residents of estates in eastern Wah Fu	
	Construction	Operation
Unmitigated	Significant Adverse	Slight Adverse
Mitigated	Moderate Adverse	Negligible (Year 10)

Rev	Date	Drawn	Description	Ch'kd	App'd
-----	------	-------	-------------	-------	-------



Project
CONSULTANCY AGREEMENT NO. NEX/2301
SOUTH ISLAND LINE (EAST)
ENVIRONMENTAL IMPACT ASSESSMENT

Title
Visual Impacts
Sheet 1 of 4

Designed	EIK	07/10	Eng.Chk.	
Drawn	EIK	07/10	Coordination	
Dwg.Chk.	ELK	07/10	Approved	CJF 07/10
Scale	As Shown	Project	CAD File	Status
Drawing No.	Figure 6.8.1			Rev

Future staffs and visitors in Central Government Complex and LegCo Complex and associated open spaces at Tamar Site, Central	
Construction	Operation
Moderate Adverse	Moderate Adverse
Moderate Adverse	Negligible (Year 10)

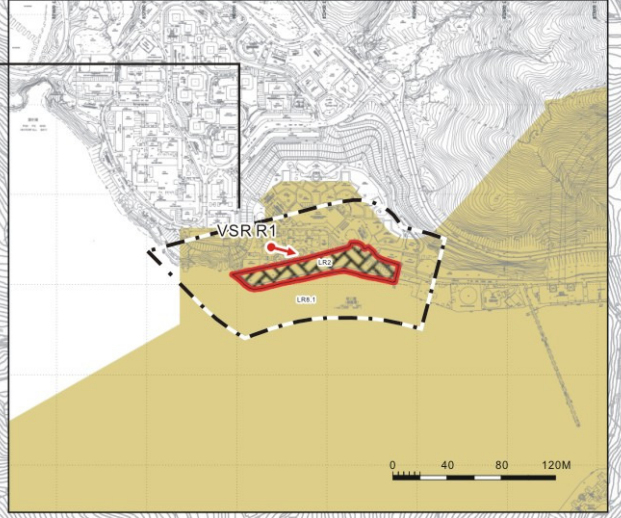
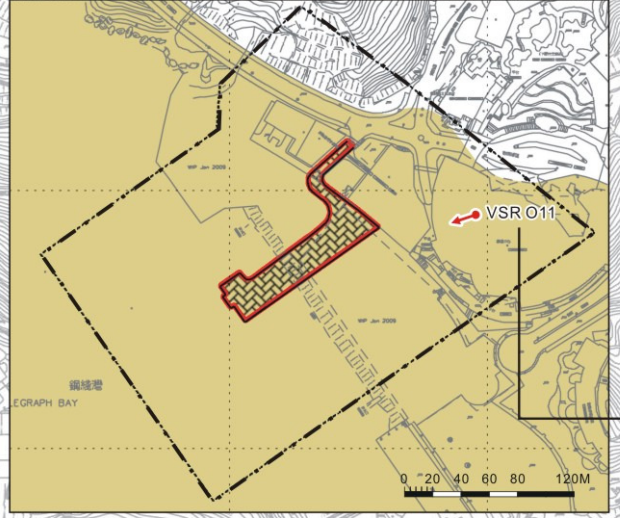
Workers in Commercial Buildings along Queensway	
Construction	Operation
Moderate Adverse	Moderate Adverse
Moderate Adverse	Negligible (Year 10)

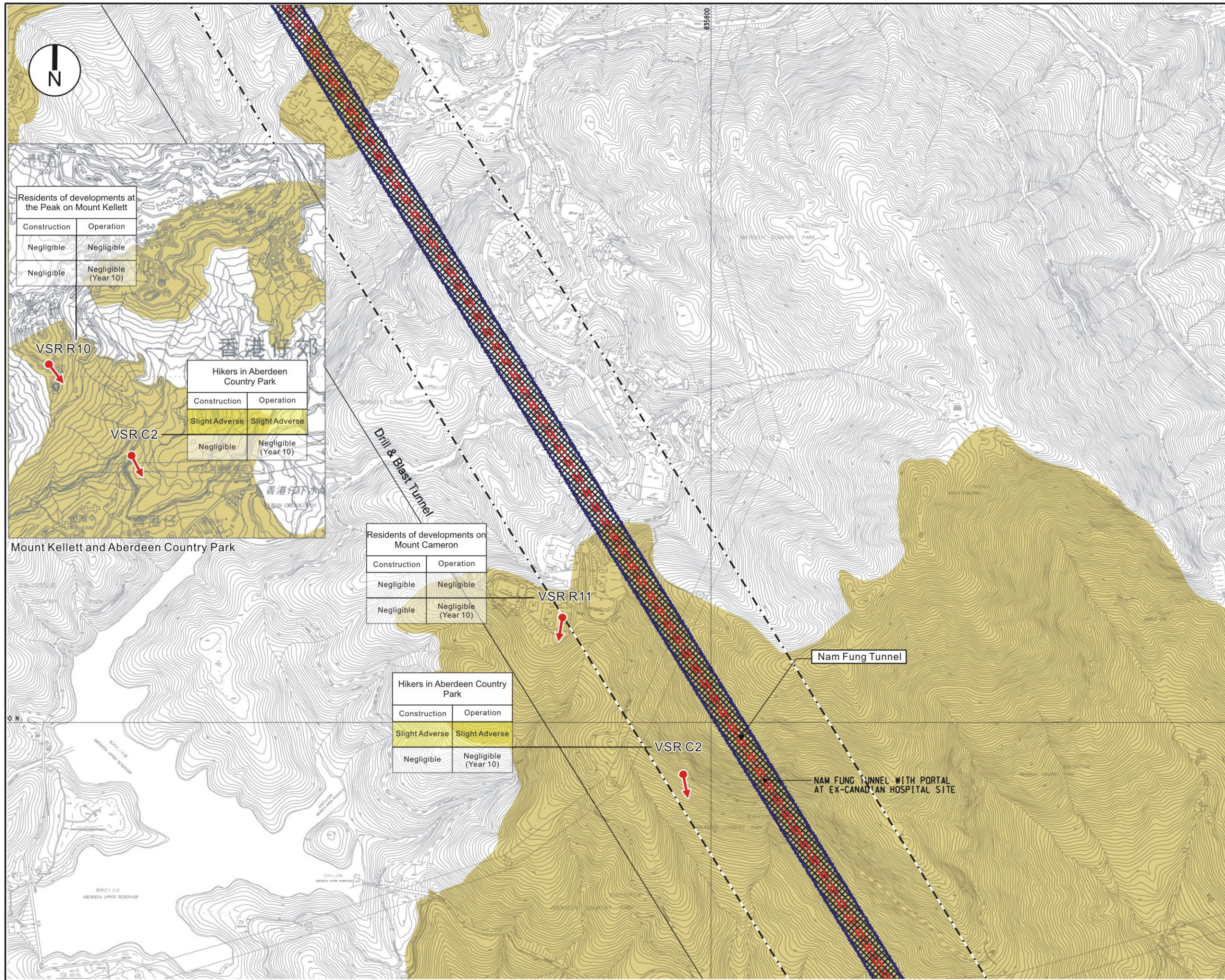
Visitors to Hong Kong Park	
Construction	Operation
Moderate Adverse	Moderate Adverse
Moderate Adverse	Negligible (Year 10)

Travellers on Supreme Court Road	
Construction	Operation
Moderate Adverse	Moderate Adverse
Moderate Adverse	Negligible (Year 10)

Residents of Wah Kwai Estate	
Construction	Operation
Moderate Adverse	Negligible
Moderate Adverse	Negligible (Year 10)

Workers and Visitors in Cyber Port	
Construction	Operation
Slight Adverse	Negligible
Slight Adverse	Negligible (Year 10)





Residents of developments at the Peak on Mount Kellett

Construction	Operation
Negligible	Negligible
Negligible	Negligible (Year 10)

Hikers in Aberdeen Country Park

Construction	Operation
Slight Adverse	Slight Adverse
Negligible	Negligible (Year 10)

Residents of developments on Mount Cameron

Construction	Operation
Negligible	Negligible
Negligible	Negligible (Year 10)

Hikers in Aberdeen Country Park

Construction	Operation
Slight Adverse	Slight Adverse
Negligible	Negligible (Year 10)

- ### Legend
- Proposed SIL(E)
 - 100M Study Boundary for Landscape Impact Assessment
 - Proposed SIL(E) Station
 - Proposed Works Site (Ground Level and Underground)
 - Proposed Works Site
 - Proposed Works Area
 - Zone of Visual Influence
 - Visually Sensitive Receiver (VSR) and Angle of Main View
 - Photomontage



Key Plan

Visual Impact	Residents of estates in eastern Wah Fu	
	Construction	Operation
Unmitigated	Significant Adverse	Slight Adverse
Mitigated	Moderate Adverse	Negligible (Year 10)

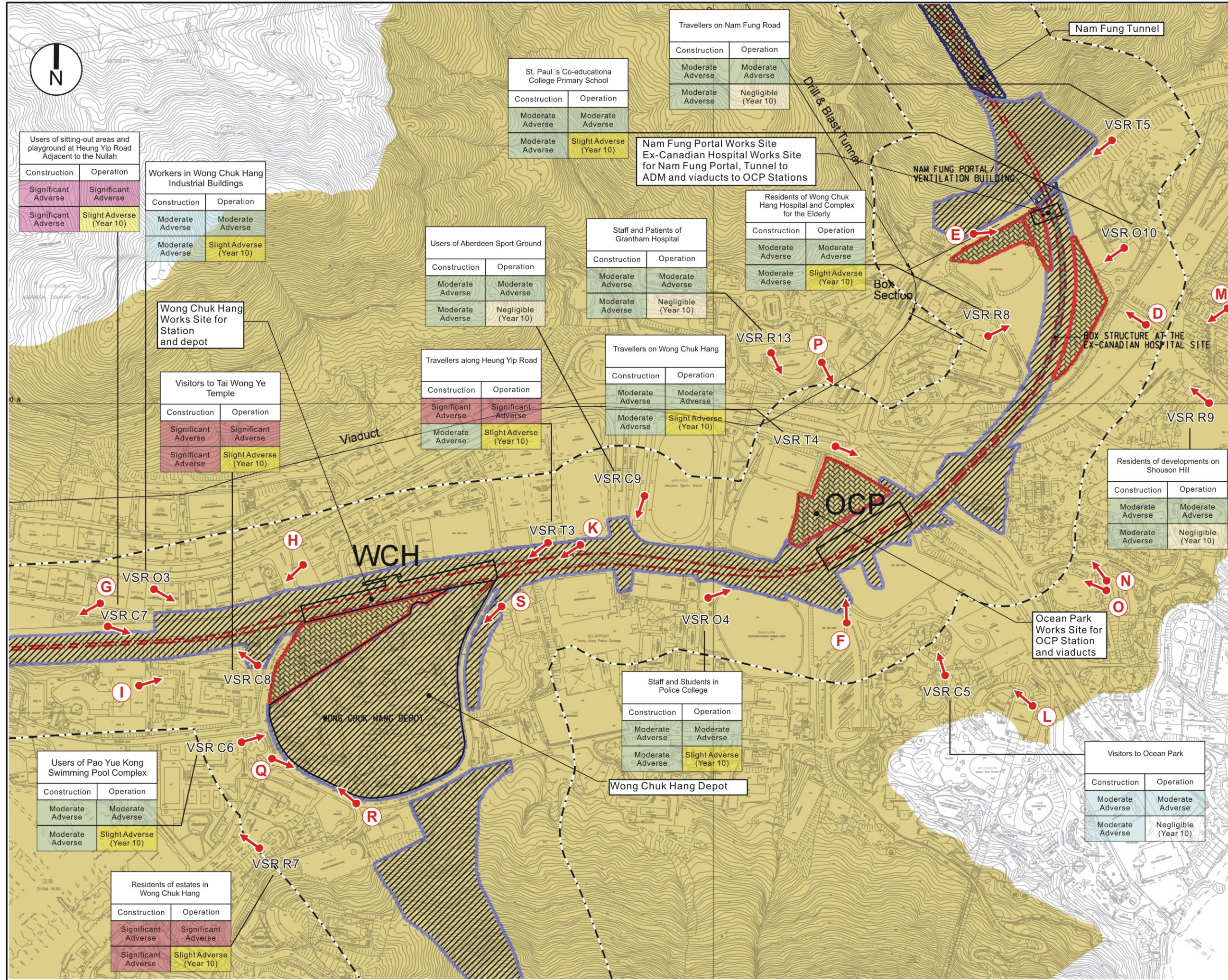
Rev	Date	Drawn	Description	Ch'kd	App'd



Project
CONSULTANCY AGREEMENT NO. NEX/2301
SOUTH ISLAND LINE (EAST)
ENVIRONMENTAL IMPACT ASSESSMENT

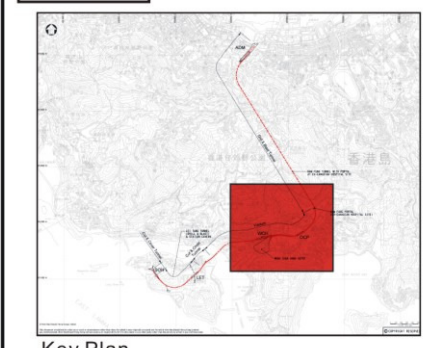
Title
Visual Impacts
Sheet 2 of 4

Designed	Eng.Chk.	Coordination	Approved	Status
Drawn	EIK	07/10	CJF	07/10
Dwg.Chk.	ELK	07/10	CJF	07/10
Scale	As Shown	Project	CAD File	Status
Drawing No.	Figure 6.8.2			Rev



Legend

- Proposed SIL(E)
- 100M Study Boundary for Landscape Impact Assessment
- Proposed SIL(E) Station
- Proposed Works Site (Ground Level and Underground)
- Proposed Works Site
- Proposed Works Area
- Zone of Visual Influence
- Visually Sensitive Receiver (VSR) and Angle of Main View
- Photomontage



Visual Impact

	Residents of estates in eastern Wah Fu	
	Construction	Operation
Unmitigated	Significant Adverse	Slight Adverse
Mitigated	Moderate Adverse	Negligible (Year 10)

Rev	Date	Drawn/Description	Chk'd/App'd



Project
CONSULTANCY AGREEMENT NO. NEX/2301
SOUTH ISLAND LINE (EAST)
ENVIRONMENTAL IMPACT ASSESSMENT

Title
Visual Impacts
Sheet 3 of 4

Designed	Eng.Chk.	Drawn	Coordination	Dwg.Chk.	Approved	Status
		EIK	07/10	ELK	CJF	07/10
Scale	Project	As Shown	CAD File			
Drawing No.						

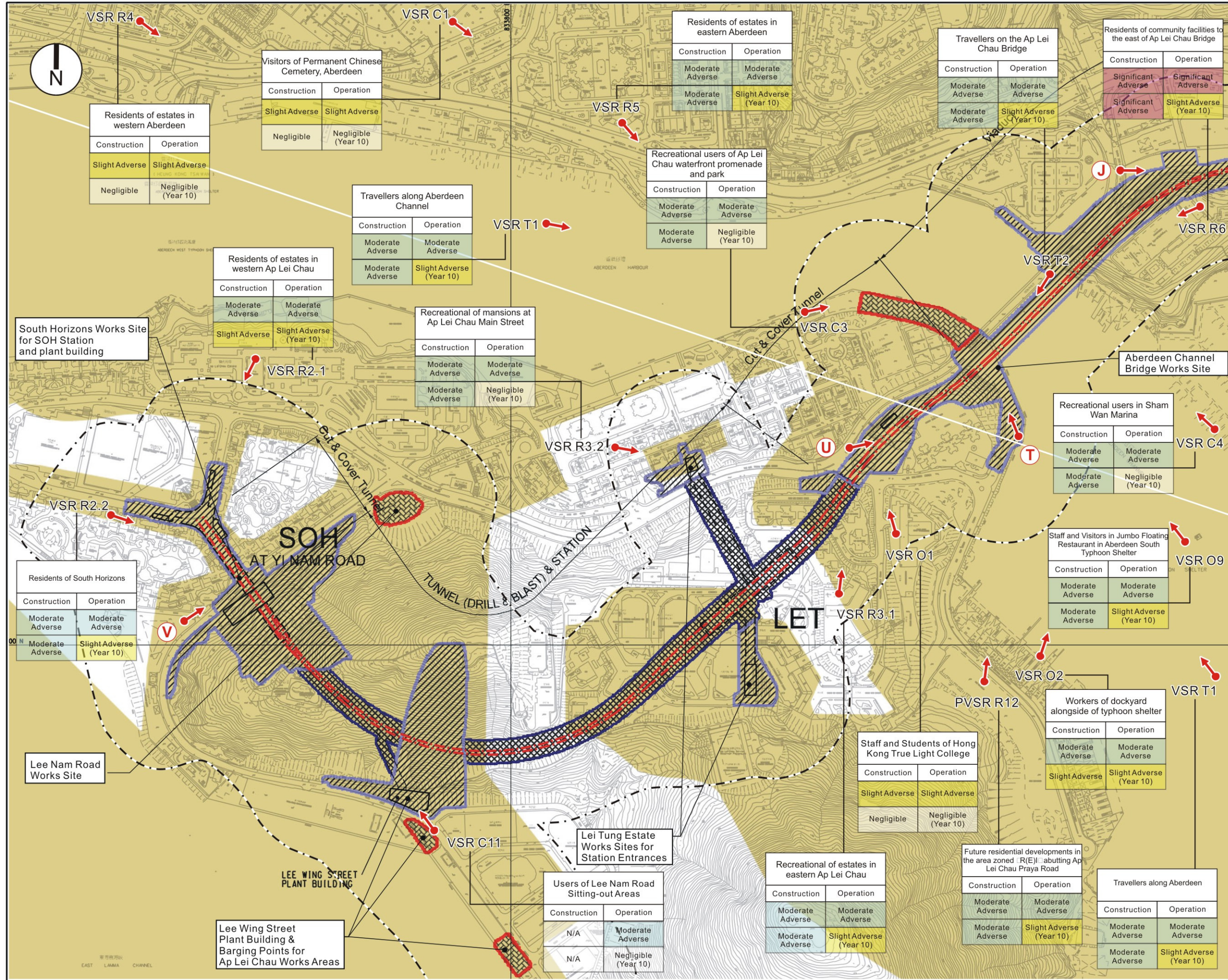


© COPYRIGHT RESERVED

© Mott MacDonald Hong Kong Limited

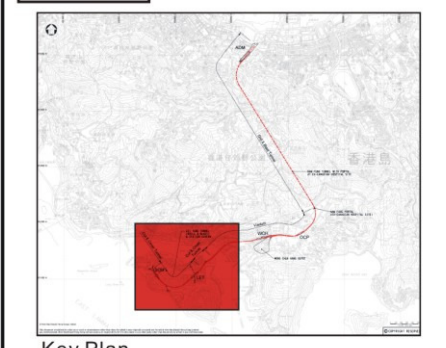
This document should not be relied on or used in circumstances other than those for which it was originally prepared and for which Mott MacDonald Hong Kong Limited was commissioned. Mott MacDonald Hong Kong Limited accepts no responsibility for this document to any other party other than the person by whom it was commissioned.

Figure 6.8.3



Legend

- Proposed SIL(E)
- 100M Study Boundary for Landscape Impact Assessment
- Proposed SIL(E) Station
- Proposed Works Site (Ground Level and Underground)
- Proposed Works Site
- Proposed Works Area
- Zone of Visual Influence
- Visually Sensitive Receiver (VSR) and Angle of Main View
- Photomontage



Visual Impact	Residents of estates in eastern Wah Fu	
	Construction	Operation
Unmitigated	Significant Adverse	Slight Adverse
Mitigated	Moderate Adverse	Negligible (Year 10)

Rev	Date	Drawn/Description	Chk'd/App'd

Mott MacDonald Hong Kong Ltd
7th Floor
West Wing Office Building
New World Centre
20 Salisbury Road
Tsim Sha Tsui, Kowloon
Hong Kong
Tel 2828 5757
Fax 2827 1823
Web www.mottmac.com.hk

Project
CONSULTANCY AGREEMENT NO. NEX/2301
SOUTH ISLAND LINE (EAST)
ENVIRONMENTAL IMPACT ASSESSMENT

Title
Visual Impacts
Sheet 4 of 4

Designed	Eng.Chk.		
Drawn	EIK	07/10	Coordination
Dwg.Chk.	ELK	07/10	Approved C/JF 07/10
Scale	As Shown	Project	Status
		CAD File	
Drawing No.			Rev