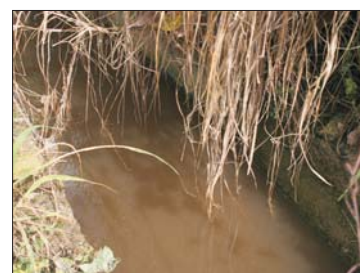


LR1.1 WATERCOURSE



LR1.2 CHANNELIZED WATERCOURSE



LR1.4 POND (ABANDONED)



LR3.1 WOODLAND ON HILLSIDE



LR3.2 WOODLAND ON LOWLAND



LR3.3 FUNG SHUI WOODLAND



LR4.1 SHRUBBY GRASSLAND ON HILLSIDE



LR4.2 SHRUBBY GRASSLAND ON LOWLAND



LR5.1 ACTIVE FARMLAND



LR5.2 INACTIVE FARMLAND



LR6.1 RURAL BUILT/OPEN STORAGE AREA



LR6.2 VILLAGE AREA



LR6.3 TRADITIONAL VILLAGE AREA



LR6.5 ONGOING DEVELOPMENT



LR6.6 TRANSPORT ROUTE WITHOUT SIGNIFICANT PLANTING



LR6.8 CEMETERY AREA



LR6.9 TEMPLE AREA



LR6.10 TRANSPORT ROUTE WITH SIGNIFICANT PLANTING



Rev	Date	Drawn	Description	Ch'k'd	App'd

Mott MacDonald

20/F Two Landmark East
100 How Ming Street
Kwun Tong, Kowloon
Hong Kong
T +852 2828 5757
F +852 2827 1823
W www.mottmac.com.hk

CEDD

CIVIL ENGINEERING
AND DEVELOPMENT
DEPARTMENT

AGREEMENT NO. CE45/2008(CE)
LIANTANG/HEUNG YUEN WAI BOUNDARY
CONTROL POINT AND ASSOCIATED WORKS
-- INVESTIGATION

PHOTORECORD OF EXISTING LANDSCAPE
RESOURCES - SECTION A, ZONE 1

Design		Eng.Chk.		
Drawn		Coordination		
Dwg. Chk.		Approved		
Scale at A3		Project		Status
		CAD file		
Drawing No				Rev

© COPYRIGHT RESERVED

FIGURE 11.5.15

© Mott MacDonald Hong Kong Limited
This document should not be relied on or used in circumstances other than those for which it was originally prepared and for which Mott MacDonald Hong Kong Limited was commissioned. Mott MacDonald Limited accepts no responsibility for this document to any other party other than the person by whom it was commissioned.