

LR1.1 WATERCOURSE



LR3.1 WOODLAND ON HILLSIDE



LR5.1 ACTIVE FARMLAND



LR6.2 VILLAGE AREA



LR6.4 INDUSTRIAL/FACILITY AREA



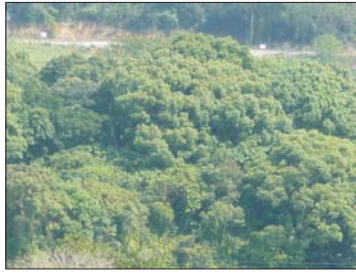
LR6.9 TEMPLE AREA



LR1.2 CHANNELIZED WATERCOURSE



LR3.2 WOODLAND ON LOWLAND



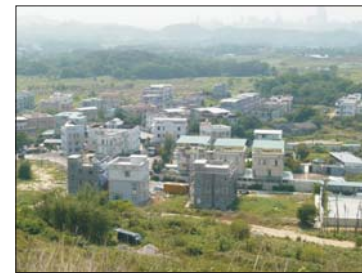
LR6.6 TRANSPORT ROUTE WITHOUT SIGNIFICANT PLANTING



LR7 LANDFILL



LR4.1 SHRUBBY GRASSLAND ON HILLSIDE



LR5.2 INACTIVE FARMLAND



LR6.8 CEMETERY AREA



LR1.4 POND



LR4.2 SHRUBBY GRASSLAND ON LOWLAND



LR6.3 TRADITIONAL VILLAGE AREA



LR2.2 VEGETATED MAN-MADE SLOPE



LR6.1 RURAL BUILT/OPEN STORAGE AREA



Rev	Date	Drawn	Description	Ch'k'd	App'd



28/F Two Landmark East
100 How Ming Street
Kwun Tong, Kowloon
Hong Kong
T +852 2828 5757
F +852 2827 1823
W www.mottmac.com.hk



CIVIL ENGINEERING
AND DEVELOPMENT
DEPARTMENT

AGREEMENT NO. CE45/2008(CE)
LIANTANG/HEUNG YUEN WAI BOUNDARY
CONTROL POINT AND ASSOCIATED WORKS
-- INVESTIGATION

PHOTORECORD OF EXISTING LANDSCAPE
RESOURCES - SECTION A, ZONE 2

Design		Eng.Chk.		
Drawn		Coordination		
Dwg. Chk.		Approved		
Scale at A3		Project		Status
		CAD file		
Drawing No		FIGURE 11.5.16		Rev

© COPYRIGHT RESERVED

© Mott MacDonald Hong Kong Limited
This document should not be relied on or used in circumstances other than those for which it was originally prepared and for which Mott MacDonald Hong Kong Limited was commissioned. Mott MacDonald Limited accepts no responsibility for this document to any other party other than the person by whom it was commissioned.