

**SECTION A
ZONE 2**

**SECTION A
ZONE 3**

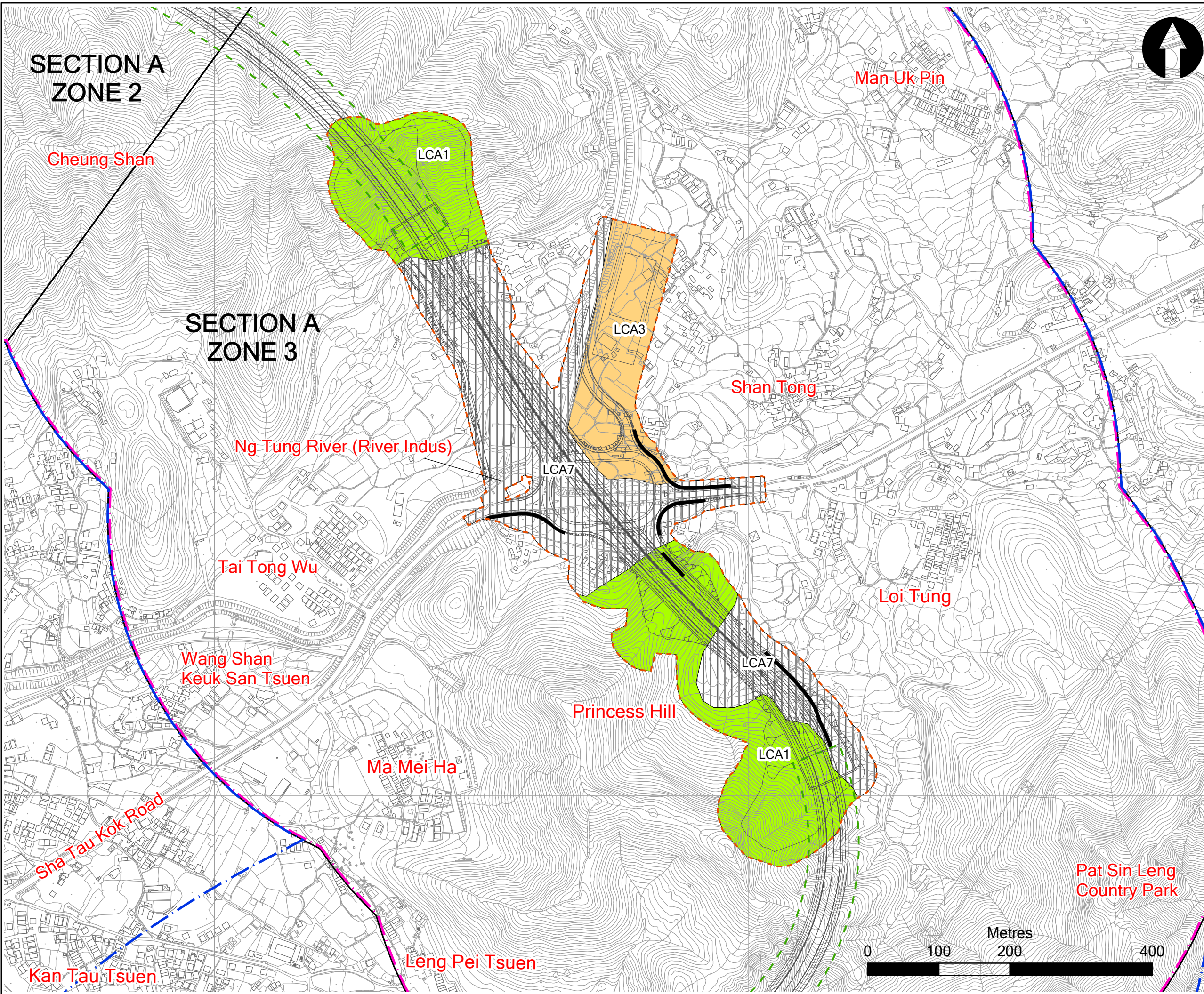


Key

- - - Works Area (at Grade)
- - - Works Area (Tunnel)
- Future BCP and Associated Road Works
- Proposed Noise Barrier
- 500m Study Area of the Overall Project
- 500m Study Area of Individual Section

Landscape Character Areas (LCAs)

- LCA1 - Natural Vegetated Hillside Landscape
- LCA2 - Heavily Populated Village Landscape
- LCA3 - Agricultural Lowland Landscape
- LCA4 - Landfill Landscape
- LCA5 - Cemetery Landscape
- LCA6 - Urban Peripheral Village Landscape
- LCA7 - Developed Rural Landscape
- LCA8 - Reservoir Landscape
- LCA9 - Transportation Corridor Landscape
- LCA10 - Historic Landscape
- LCA11 - Ongoing Development Landscape




Rev	Date	Drawn	Description	Ch'k'd	App'd



Mott MacDonald

20/F Two Landmark East
100 How Ming Street
Kwan Tong, Kowloon
Hong Kong
T +852 2828 5757
F +852 2827 1823
W www.mottmac.com.hk

Client



**CIVIL ENGINEERING
AND DEVELOPMENT
DEPARTMENT**

Project

AGREEMENT NO. CE45/2008(CE)
LIANTANG/HEUNG YUEN WAI BOUNDARY
CONTROL POINT AND ASSOCIATED WORKS
-- INVESTIGATION

Title

IMPACT ON LANDSCAPE CHARACTER AREAS
SECTION A, ZONE 3

Designed		Eng. Chk.	
Drawn		Coordination	
Dwg. Chk.		Approved	
Scale at A3	1 : 5000	Project	Status
Drawing No		CAD file	

© Mott MacDonald Hong Kong Limited
This document should not be relied on or used in circumstances other than those for which it was originally prepared and for which Mott MacDonald Hong Kong Limited was commissioned. Mott MacDonald Limited accepts no responsibility for this document to any other party other than the person by whom it was commissioned.